

7

6

5

4

3

2

1

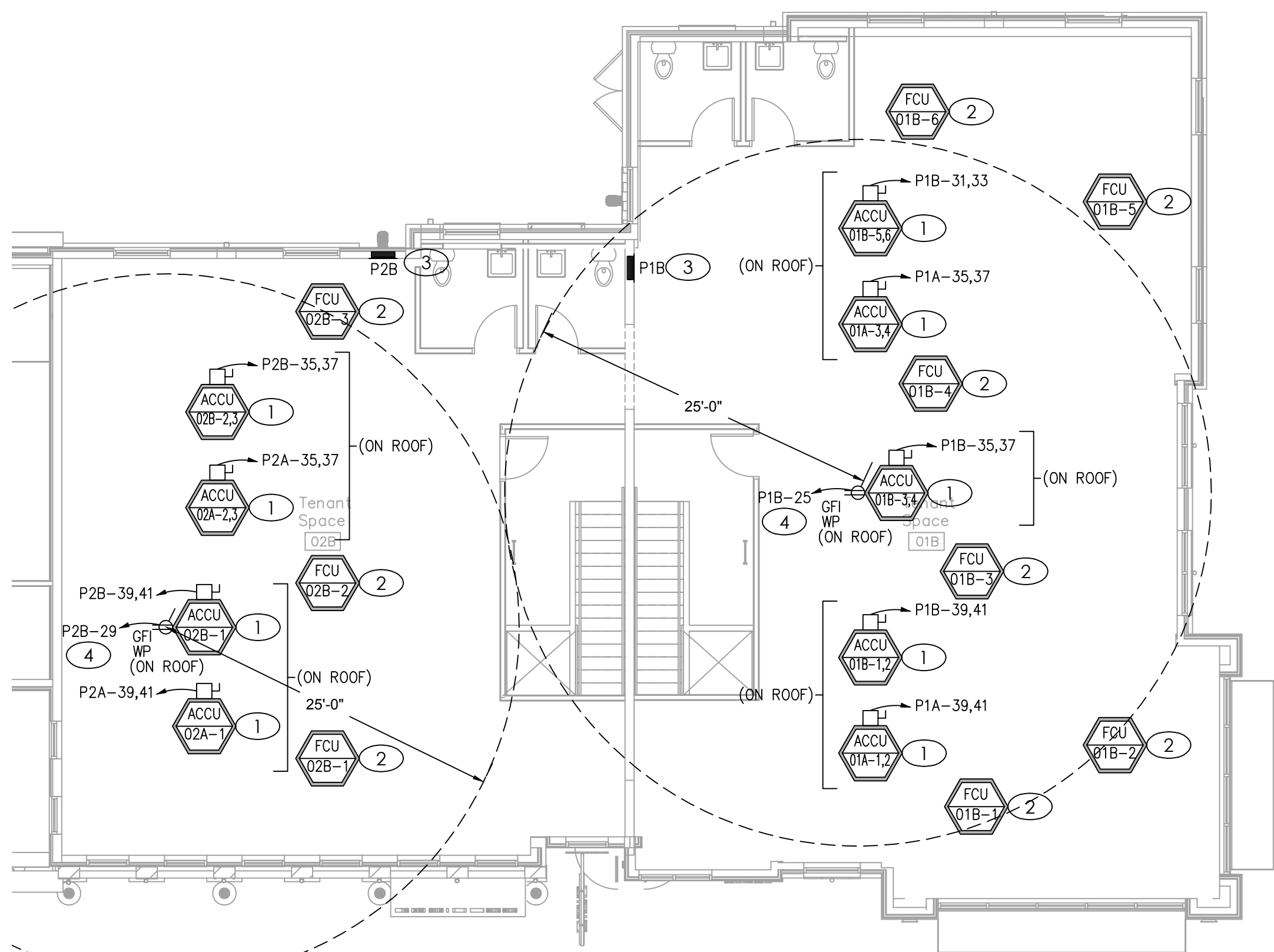
E

D

C

B

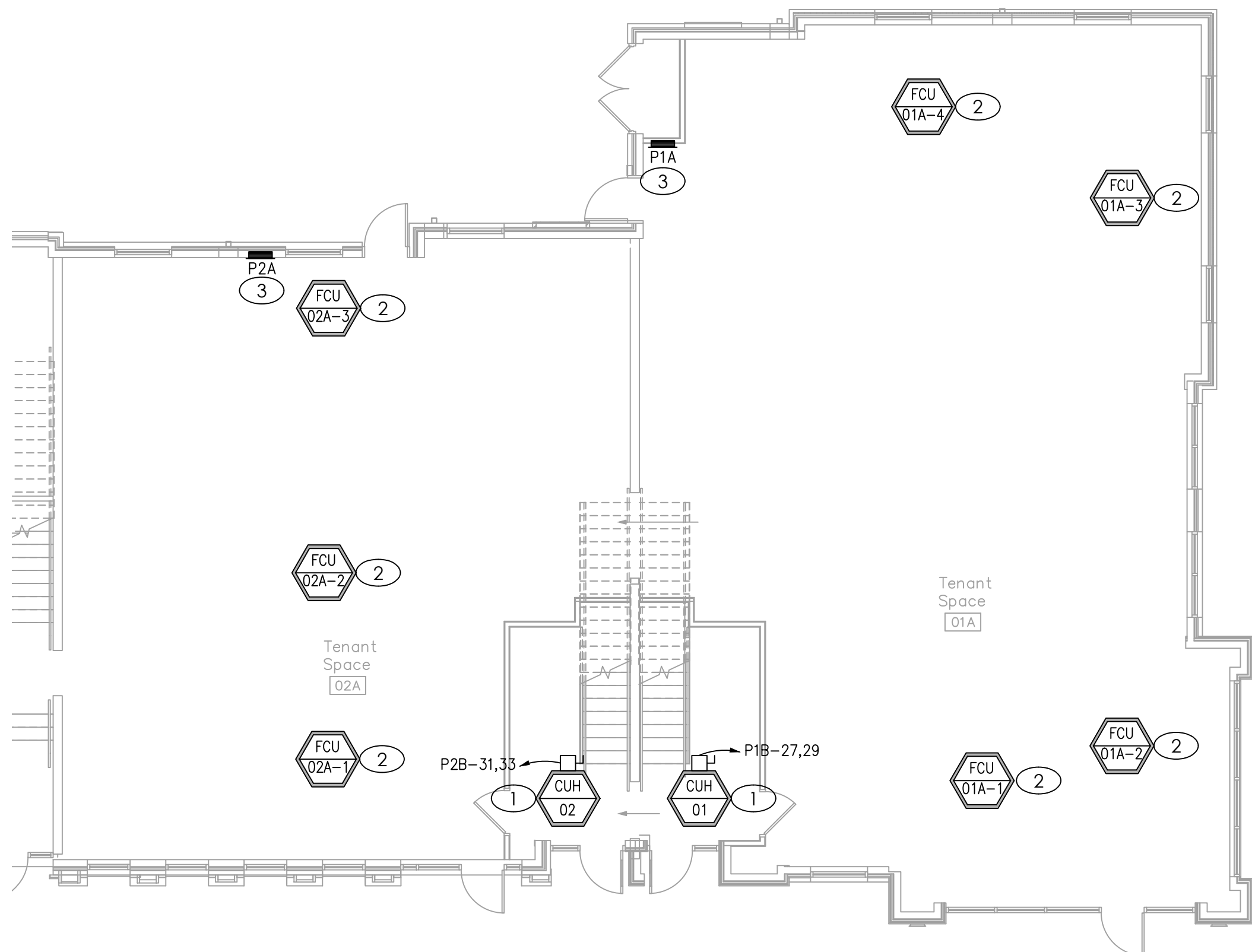
A



## POWER PLAN - 2ND FLOOR

SCALE : 1/8" = 1'-0"

2



## POWER PLAN - 1ST FLOOR

SCALE : 1/8" = 1'-0"

1



## GENERAL NOTES

- DRAWINGS ARE DIAGRAMMATIC AND SHALL NOT BE SCALED. REFER TO ARCHITECTURAL PLANS OR FIELD MEASUREMENTS FOR DIMENSIONS.
- ALL WORK SHALL COMPLY WITH THE LATEST ADOPTED EDITION OF THE NATIONAL ELECTRICAL CODE (NFPA 70) AND ALL LOCAL BUILDING CODES AND AMENDMENTS.
- COORDINATE ALL WORK WITH OTHER TRADES AND EXISTING CONDITIONS AS REQUIRED TO PROPERLY INSTALL ALL SYSTEMS AS INTENDED, WITHIN THE CONFINES OF THE SPACE AVAILABLE, AND WITHOUT INTERFERENCES.
- THIS CONTRACTOR SHALL PERFORM ALL WORK INDICATED AND/OR AS REQUIRED FOR THE PROPER INSTALLATION AND OPERATION OF THE ELECTRICAL SYSTEMS.
- ALL WIRING SHALL BE IN APPROVED RACEWAY.
- WIRE SIZE SHALL BE MINIMUM #12 AWG, THWN SOLID COPPER UNLESS OTHERWISE NOTED. PROVIDE GROUND WIRE WHERE REQUIRED BY CODE. INCREASE WIRE SIZE TO COMPENSATE FOR VOLTAGE DROP WHERE TOTAL LENGTH OF ANY BRANCH CIRCUIT EXCEEDS 100 FEET.
- ROUTE ALL EXPOSED, RIGID CONDUIT TIGHT TO STRUCTURE, PARALLEL TO BUILDING LINES AND IN UNISTRUT CABLE/PIPE TRAY WHERE POSSIBLE. COORDINATE CONDUIT ROUTING AND INSTALLATION WITH OTHER TRADES PRIOR TO ROUGH-IN. SUPPORT CONDUIT FROM STRUCTURE NOT ROOF DECK. MAINTAIN 2" MIN SPACING FROM BOTTOM OF ROOF DECK TO PREVENT ROOFING SCREWS FROM PENETRATING CONDUITS.

## KEYED PLAN NOTES

- MAKE CONNECTION TO DIVISION 23 EQUIPMENT PER MANUFACTURER'S LITERATURE AND NEC REQUIREMENTS. COORDINATE WORK WITH DIVISION 23 CONTRACTOR PRIOR TO CONSTRUCTION.
- LINE SET CONDUIT & CONDUCTORS BETWEEN OUTDOOR & INDOOR UNITS TO BE RUN BY DIVISION 23 CONTRACTOR AS PART OF UNIT LINE SET. CONDUIT TERMINATIONS AT OUTDOOR & INDOOR UNITS TO BE COMPLETED BY DIVISION 26 CONTRACTOR. COORDINATE WORK WITH DIVISION 23 CONTRACTOR PRIOR TO CONSTRUCTION.
- LOCATION OF EXISTING PANELBOARD TO REMAIN. VERIFY EXACT LOCATION ON SITE PRIOR TO START OF WORK.
- GFCI-PROTECTED RECEPTACLE WITH IN-USE WEATHERPROOF COVER FOR MAINTENANCE OF ROOFTOP HVAC EQUIPMENT. CONFIRM THAT A MAINTENANCE RECEPTACLE EXISTS WITHIN 25'-0" OF EACH ROOFTOP HVAC UNIT. MOUNT WHERE THE RECEPTACLE DOES NOT OBSTRUCT EQUIPMENT ACCESS OR OPERATION.

## ELECTRICAL SPECIFICATIONS

### PART I - GENERAL

#### A. CONDITIONS

- PROVIDE FIRE STOP ON ALL PIPING THAT PENETRATES RATED WALLS. METHOD OF FIRE STOP SHALL MEET WALL RATING. REFER TO ARCHITECTURAL DRAWINGS FOR LOCATION OF FIRE RATED WALLS. THIS CONTRACTOR SHALL PROVIDE FIRE RATED ENCLOSURES AROUND ALL ROUGH-IN BOXES, PANELS, ETC. THAT ARE LOCATED IN FIRE RATED WALLS AND SHALL FIRE CAULK ALL OPENINGS IN RATED ASSEMBLIES.

#### C. CODES, REGULATIONS, AND STANDARDS

- THE INSTALLATION SHALL COMPLY WITH APPLICABLE LOCAL AND STATE CODES AND ORDINANCES, WITH THE REGULATIONS OF THE LATEST EDITION OF THE NATIONAL ELECTRIC CODE AND WITH THE REQUIREMENTS OF THE POWER, TELEPHONE, AND CATV COMPANIES FURNISHING SERVICES TO THIS INSTALLATION.
- THE LATEST EDITIONS OF THE FOLLOWING INDUSTRY STANDARDS, SPECIFICATIONS, AND CODES ARE MINIMUM REQUIREMENTS:
  - THE NATIONAL ELECTRICAL MANUFACTURER'S ASSOCIATION STANDARDS.
  - THE NATIONAL ELECTRICAL CODE, INCLUDING LOCAL AMENDMENTS.
  - UNDERWRITER LABORATORIES INCORPORATED STANDARDS.
  - AMERICAN NATIONAL STANDARDS INSTITUTE.
  - INTERNATIONAL BUILDING CODE.

#### H. DRAWINGS

- THE DRAWINGS INDICATE THE GENERAL ARRANGEMENT AND LOCATIONS OF THE ELECTRICAL WORK. DATA PRESENTED ON THESE DRAWINGS ARE AS ACCURATE AS PLANNING CAN DETERMINE, BUT FIELD VERIFICATION OF ALL DIMENSIONS, LOCATIONS, LEVELS, ETC., TO SUIT FIELD CONDITIONS IS REQUIRED. REVIEW ALL ARCHITECTURAL, STRUCTURAL, AND MECHANICAL DRAWINGS AND ADJUST ALL WORK TO MEET THE REQUIREMENTS OF CONDITIONS SHOWN. THE ARCHITECTURAL DRAWINGS SHALL TAKE PRECEDENCE OVER ALL OTHER DRAWINGS. DISCREPANCIES BETWEEN DIFFERENT PLANS, OR BETWEEN DRAWINGS AND SPECIFICATIONS, OR REGULATIONS AND CODES GOVERNING THE INSTALLATION SHALL BE BROUGHT TO THE ATTENTION OF THE ENGINEER IN WRITING BEFORE THE DATE OF BID OPENING. IF DISCREPANCIES ARE NOT REPORTED, THE CONTRACTOR SHALL BID THE GREATER QUANTITY OR BETTER QUALITY, AND APPROPRIATE ADJUSTMENTS WILL BE MADE AFTER CONTRACT AWARD. CONTRACTOR SHALL BE RESPONSIBLE TO FIELD MEASURE AND CONFIRM MOUNTING HEIGHTS AND LOCATION OF ELECTRICAL EQUIPMENT WITH RESPECT TO COUNTERS, RADIATION, ETC. DO NOT SCALE DISTANCES OFF THE ELECTRICAL DRAWINGS, USE ACTUAL BUILDING DIMENSIONS.

#### I. COOPERATION WITH OTHER CONTRACTORS

- COORDINATE HVAC AND PLUMBING EQUIPMENT CONNECTION REQUIREMENTS WITH HVAC AND PLUMBING CONTRACTORS.

### PART II - PRODUCTS AND EXECUTION

#### A. MATERIALS

- ALL MATERIALS SHALL BE NEW AND OF QUALITY AS SPECIFIED ON THE PLANS OR SPECIFICATIONS AND MUST CARRY THE UNDERWRITER'S LABORATORIES APPROVAL COVERING THE PURPOSE FOR WHICH THEY ARE USED, IN ADDITION TO MEETING ALL REQUIREMENTS OF THE CURRENT APPLICABLE CODES AND REGULATIONS.

#### D. WIRE

- CONDUCTOR SIZES SHOWN ON THE DRAWINGS ARE BASED ON COPPER WIRE. UNLESS OTHERWISE SPECIFIED, ALL WIRE SHALL BE TYPE XHHW OR SE FOR FEEDERS OR BRANCH CIRCUITS LARGER THAN 4 AWG, TYPE THHN/THWN INSULATION FOR FEEDERS AND BRANCH CIRCUITS 4 AWG AND SMALLER. ALL BRANCH CIRCUIT WIRING SHALL BE COPPER.
- MC CABLE WITH COPPER CONDUCTORS AND GROUND WIRE MAY BE USED WHERE PERMITTED.

#### E. CONDUIT

- ALL WIRING SHALL BE INSTALLED IN LISTED METALLIC CONDUIT EXCEPT AS PERMITTED IN OTHER SECTIONS. RGS, WITH A 20 MIL PVC COATING WILL BE USED WHEN IN CONTACT WITH EARTH. IMC MAY BE USED IN INDOOR LOCATIONS NOT IN CONTACT WITH THE EARTH. EMT MAY BE USED IN INDOOR LOCATIONS NOT IN CONTACT WITH EARTH, NOT IN CONCRETE SLABS OR WALLS AND NOT SUBJECT TO DAMAGE. PVC MAY BE USED IN OR BELOW CONCRETE AND DIRECT BURIED IN EARTH. FLEXIBLE STEEL CONDUIT SHALL BE USED FOR INDOOR FINAL CONNECTIONS TO EQUIPMENT IN LENGTHS NOT TO EXCEED 72". LIQUID-TIGHT FLEXIBLE STEEL CONDUIT SHALL BE FOR OUTDOOR FINAL CONNECTIONS TO EQUIPMENT NOT TO EXCEED 48".
- FITTINGS AND CONDUIT BODIES SHALL BE STEEL. DIECAST FITTINGS ARE NOT ACCEPTABLE.
- CONDUIT SIZES SHALL BE AS REQUIRED BY CODE AND AS INDICATED OR SPECIFIED.
- ALL EMPTY CONDUIT SYSTEMS SHALL HAVE A 200 LB. TEST NYLON PULL STRING TO FACILITATE INSTALLATION OF FUTURE WIRE.
- WIRING, CONDUITS, AND OUTLETS SHALL BE CONCEALED WITH THE BUILDING STRUCTURE, EXCEPT THAT CERTAIN MOTOR AND LIGHTING FEEDER CONDUITS MAY BE RUN EXPOSED IN CERTAIN AREAS AS INDICATED ON THE DRAWINGS.
- CONDUIT PENETRATION THROUGH ROOF SHALL HAVE ROOF FLASHING WITH CAULK TYPE COUNTER FLASHING SLEEVE. INSTALLATION SHALL BE WATERTIGHT.
- CONDUITS SHALL BE ROUTED PARALLEL AND PERPENDICULAR TO THE STRUCTURE.

#### G. WIRING DEVICES

- WALL SWITCHES SHALL BE SPECIFICATION GRADE AC SILENT TYPE SWITCHES, 20A 120/277 VOLT.
- RECEPTACLES SHALL BE SPECIFICATION GRADE, DUPLEX TYPE, NEMA5-20R, 20 AMPERE, 120VOLT GROUNDED TYPE. SPECIAL APPLICATION RECEPTACLES SHALL BE INDICATED ON PLANS. MOUNT WITH THE GROUND DOWN.
- DEVICE PLATES SHALL BE EQUAL TO SIERRA SMOOTH-LINE PLASTIC WALL PLATES. COLOR SHALL BE WHITE, UNLESS OTHERWISE NOTED.
- RECEPTACLES IN OUTDOOR AND WET LOCATIONS SHALL BE INSTALLED WITH A HINGED OUTLET COVER/ENCLOSURE CLEARLY MARKED AND U.L. LISTED SUITABLE FOR WET LOCATIONS WHILE IN USE, EQUAL TO TAYMAC SPECIFICATION GRADE.

#### O. GUARANTEE

- GUARANTEE ALL MATERIAL FURNISHED AND ALL WORKMANSHIP PERFORMED FOR A PERIOD OF ONE YEAR FROM DATE OF FINAL ACCEPTANCE OF WORK. ANY DEFECTS DEVELOPING WITHIN THIS PERIOD, TRACEABLE TO MATERIAL FURNISHED AS A PART OF THIS SECTION OR WORKMANSHIP PERFORMED HEREUNDER, SHALL BE MADE GOOD AT NO EXPENSE TO THE OWNER.

## SYMBOLS LEGEND

NOTE: THIS IS A MASTER LEGEND AND NOT ALL SYMBOLS, ETC, ARE NECESSARILY USED ON THE DRAWINGS.

### POWER DISTRIBUTION

- 120/208V, 3 PHASE, 4 WIRE PANELBOARD, UNO

### POWER DEVICES

- GFI WP  
DISCONNECT SWITCH - SIZE AND TYPE NOTED

### AUXILIARY SYSTEMS

- MECHANICAL EQUIP. CONNECTION, SEE SCHED. ON MECH. PLAN

### GENERAL

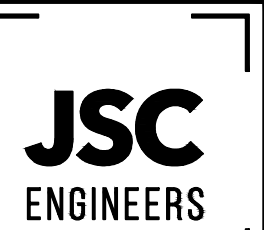
- CONDUIT RUN CONCEALED IN WALL OR ABOVE CEILING  
CONDUIT RUN BELOW FLOOR OR GRADE

### P1-3,5,7

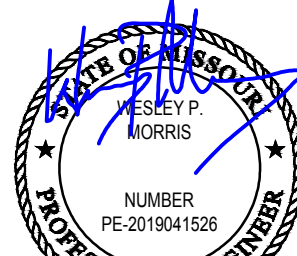
HOMERUN TO PANELBOARD, INFORMATION AT ARROWS ARE CIRCUIT NUMBERS AND PANELBOARD FOR TERMINATION. REFER TO ASSOCIATED NOTE FOR BRANCH CIRCUIT CONDUCTOR SIZES.

INDICATES 1/2" CONDUIT CONCEALED IN CEILING OR WALL WITH (3) CONDUCTORS, (1) PHASE, (1) NEUTRAL AND (1) GROUND WIRE. ALL ARE #12 AWG UNLESS NOTED OTHERWISE.

(E) OR ETR: DENOTES EXISTING ITEM/EQUIPMENT TO REMAIN



MO COA NO. 2012008786 / KS COA NO. E-2818  
1925 CENTRAL STREET, SUITE 201  
KANSAS CITY, MO 64108  
phone: (816) 272-5289  
email: jmcrothers@jseengineers.com



03-01-2023

PROJECT: **NLV SHELL - POWER TO HVAC UNITS**  
420 SW LONGVIEW BLVD.  
LEE'S SUMMIT, MO

PROJECT:

ORIGINAL:	02-24-2023
REVISIONS:	DATE / DESCRIPTION
1	03.01.23 / PLANCHHECK
2	
3	
4	
5	

Copyright 2023  
JSC Engineers

ISSUED:

PERMIT

SHEET TITLE:

ELECTRICAL  
PLAN

JOB NO.: 23-031

SHEET:

E101



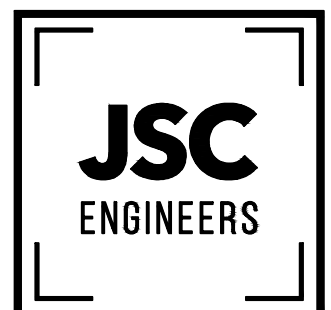
E

D

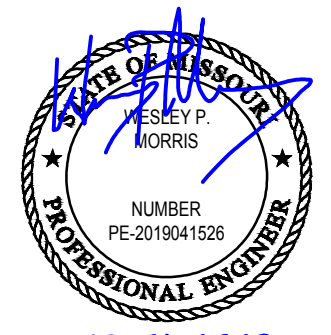
C

B

A



MO COA NO. 2012008786 / KS COA NO. E-2818  
1925 CENTRAL STREET, SUITE 201  
KANSAS CITY, MO 64108  
phone: (816) 272-5289  
email: jsmothers@jseengineers.com



03-01-2023

PROJECT: NLV SHELL - POWER TO HVAC UNITS  
420 SW LONGVIEW BLVD.  
LEE'S SUMMIT, MO

ORIGINAL: 02-24-2023  
REVISIONS: DATE / DESCRIPTION  
1 03.01.23 / PLAN CHECK  
2  
3  
4  
5  
Copyright 2023  
JSC Engineers  
ISSUED:

PERMIT

SHEET TITLE:

PANELBOARD SCHEDULES

JOB NO.: 23-031  
SHEET:

E102

PANELBOARD: P2B (EXISTING)										FED FROM: MDP BUS AMPS: 225A AIC RATING: FCA +10% MINIMUM FULLY RATED SERVES: P2B MOUNTING: RECESSED LOCATION: BACK OF HOUSE										LINE-SIDE LUGS: MECHANICAL EQUIPMENT GROUND BUS									
CKT NO.	DESCRIPTION	VOLTAMPS/PHASE			WIRE NO.	BKR AMP	P	BKR AMP	WIRE NO.	VOLTAMPS/PHASE			DESCRIPTION	CKT NO.															
		A	B	C						A	B	C																	
1	LTG - TENANT SPACE P3A	500			12	20	1	1	20	12	180		RCPT - BY PANEL	2															
3	SPARE				20	1	1	1	20	12		1,200	PWR - SIGNAGE 1	4															
5	SPARE				20	1	1	1	20	12			1,200	PWR - SIGNAGE 2	6														
7	SPARE				20	1	1	1	20	12	1,200		PWR - SIGNAGE 3	8															
9	SPARE				20	1	1	1	20	12		1,200	PWR - HEAT TRACE	10															
11	SPARE				20	1	1	1	20				SPARE	12															
13	SPARE				20	1	1	1	20				SPARE	14															
15	SPARE				20	1	1	1	20				SPARE	16															
17	SPARE				20	1	1	1	20				SPARE	18															
19	SPARE				20	1	1	1	20				SPARE	20															
21	PROVISIONAL SPACE						1	1					PROVISIONAL SPACE	22															
23	PROVISIONAL SPACE						1	1					PROVISIONAL SPACE	24															
25	PROVISIONAL SPACE						1	1					PROVISIONAL SPACE	26															
27	PROVISIONAL SPACE						1	1					PROVISIONAL SPACE	28															
29	RCPT - ROOFTOP MAINTENANCE			180	12	20	1	1					PROVISIONAL SPACE	30															
31	PWR - CUH-2 (HACR)	2,500			10	30	2	1					PROVISIONAL SPACE	32															
33			2,500						1				PROVISIONAL SPACE	34															
35	PWR - ACCU-02B-2.3 (HACR)			3,640	6	50	2	1					PROVISIONAL SPACE	36															
37		3,640							1				PROVISIONAL SPACE	38															
39	PWR - ACCU-02B-1 (HACR)		1,352		12	15	2	1					PROVISIONAL SPACE	40															
41				1,352				1					PROVISIONAL SPACE	42															
SUBTOTAL		6,640	3,852	5,172							1,380	2,400	1,200	SUBTOTAL															
TOTAL PHASE A - VA		8,020	LOAD		CONN. VA		DF	LOAD		CONN. VA		DF																	
AMPS		67	COOLING		9,984		0	REFRIG					1.00																
TOTAL PHASE B - VA		6,252	HEATING		14,984		1.00	SIGN/DISP		3,600		1.25																	
AMPS		52	LIGHTING		500		1.25	KITCHEN					1.00																
TOTAL PHASE C - VA		6,372	RECEPTACLES		360		1.0/5	EXISTING					1.00																
AMPS		53	MOTORS		1.00		1.00	LRG MOTOR					1.25																
TOTAL PN.LBD - VA		20,644	SUPP HEAT		1.00		1.00	SHOW/WNDW					1.25																
AMPS		57	MISC EQUIP		1,200		1.00	LTG TRACK					1.00																
PANELBOARD NOTES																													
DESCRIPTION IN ITALICS = EXISTING LABELED LOAD TO REMAIN																													
SIGN/DISPLAY - SIGNAGE & DISPLAY CASE																													

PANELBOARD: P1B (EXISTING)					FED FROM: MDP					LINE-SIDE LUGS: MECHANICAL				
BUS AMPS: 225A					AIC RATING: FCA +10% MINIMUM FULLY RATED					EQUIPMENT GROUND BUS				
MAIN SIZE/TYPE: 200AMCB					SERVES: P1B									
VOLTS/PHASE: 208Y/120V, 3PH, 4W					MOUNTING: RECESSED									
SECTION: 1					LOCATION: BACK OF HOUSE									
CKT NO.	DESCRIPTION	VOLTAMPS/PHASE			WIRE NO.	BKR AMP	P	BKR AMP	WIRE NO.	VOLTAMPS/PHASE			DESCRIPTION	CKT NO.
		A	B	C						A	B	C		
1	LTG - TENANT SPACE P1B	500			12	20	1	1	20	12	180		RCPT - BY PANEL	2
3	SPARE				20	1	1	1	20	12		1,200	PWR - SIGNAGE 1	4
5	SPARE				20	1	1	1	20	12		1,200	PWR - SIGNAGE 2	6
7	SPARE				20	1	1	1	20	12	1,200		PWR - HEAT TRACE	8
9	SPARE				20	1	1	1	20				SPARE	10
11	SPARE				20	1	1	1	20				SPARE	12
13	SPARE				20	1	1	1	20				SPARE	14
15	SPARE				20	1	1	1	20				SPARE	16
17	SPARE				20	1	1	1	20				SPARE	18
19	SPARE				20	1	1	1	20				SPARE	20
21	PROVISIONAL SPACE						1	1					PROVISIONAL SPACE	22
23	PROVISIONAL SPACE						1	1					PROVISIONAL SPACE	24
25	RCPT - ROOFTOP MAINTENANCE	180			12	20	1	1					PROVISIONAL SPACE	26
27	PWR - CUH-1 (HACR)		2,500		10	30	2	1					PROVISIONAL SPACE	28
29				2,500				1					PROVISIONAL SPACE	30
31	PWR - ACCU-01B-5.6 (HACR)	3,640			6	50	2	1					PROVISIONAL SPACE	32
33			3,640										PROVISIONAL SPACE	34
35	PWR - ACCU-01B-3.4 (HACR)			2,548	10	30	2	1					PROVISIONAL SPACE	36
37		2,548											PROVISIONAL SPACE	38
39	PWR - ACCU-01B-1.2 (HACR)		3,640		6	50	2	1					PROVISIONAL SPACE	40
41				3,640				1					PROVISIONAL SPACE	42
SUBTOTAL		6,868	9,780	8,688						1,380	1,200	1,200	SUBTOTAL	
TOTAL PHASE A - VA		8,248	LOAD		CONN. VA		DF	LOAD		CONN. VA		DF		
AMPS		69	COOLING		19,656		0	REFRIG				1.00		
TOTAL PHASE B - VA		10,980	HEATING		24,656		1.00	SIGN/DISP		2,400		1.25		
AMPS		92	LIGHTING		500		1.25	KITCHEN				1.00		
TOTAL PHASE C - VA		9,888	RECEPTACLES		360		1.0/5	EXISTING				1.00		
AMPS		82	MOTORS		1.00		1.00	LRG MOTOR				1.25	TOTAL DEMAND	
TOTAL PN.LBD - VA		29,116	SUPP HEAT		1.00		1.00	SHOW/WNDW				1.25	29,841 VA	
AMPS		81	MISC EQUIP		1,200		1.00	LTG TRACK				1.00	83 A	
PANELBOARD NOTES														
DESCRIPTION IN ITALICS = EXISTING LABELED LOAD TO REMAIN														
SIGN/DISPLAY - SIGNAGE & DISPLAY CASE														

PANELBOARD: P2A (EXISTING)										FED FROM: MDP AIC RATING: FCA +10% MINIMUM FULLY RATED SERVES: P2A MOUNTING: RECESSED LOCATION: BACK OF HOUSE										LINE-SIDE LUGS: MECHANICAL EQUIPMENT GROUND BUS											
BUS AMPS: 225A MAIN SIZE/TYPE: 200MCMB VOLTS/PHASE: 208Y/120V, 3PH, 4W SECTION: 1		DESCRIPTION			VOLTAMPS/PHASE			WIRE NO.			BKR AMP			P			BKR AMP			WIRE NO.			VOLTAMPS/PHASE			DESCRIPTION			CKT NO.		
					A B C			NO.			AMP						AMP			NO.			A B C								
1	LTG - TENANT SPACE P2A	500						12	20	1	1	20	12	180										RCPT - BY PANEL		2					
3	SPARE							20	1	1	1	20	12									1,200		PWR - SIGNAGE 1		4					
5	SPARE							20	1	1	1	20	12									1,200		PWR - SIGNAGE 2		6					
7	SPARE							20	1	1	1	20	12	1,200										PWR - SIGNAGE 3		8					
9	SPARE							20	1	1	1	20	12									1,200		PWR - HEAT TRACE		10					
11	SPARE							20	1	1	1	20												SPARE		12					
13	SPARE							20	1	1	1	20												SPARE		14					
15	SPARE							20	1	1	1	20												SPARE		16					
17	SPARE							20	1	1	1	20												SPARE		18					
19	SPARE							20	1	1	1	20												SPARE		20					
21	SPARE											1	1											PROVISIONAL SPACE		22					
23	PROVISIONAL SPACE											1	1											PROVISIONAL SPACE		24					
25	PROVISIONAL SPACE											1	1											PROVISIONAL SPACE		26					
27	PROVISIONAL SPACE											1	1											PROVISIONAL SPACE		28					
29	PROVISIONAL SPACE											1	1											PROVISIONAL SPACE		30					
31	PROVISIONAL SPACE											1	1											PROVISIONAL SPACE		32					
33	PROVISIONAL SPACE											1	1											PROVISIONAL SPACE		34					
35	PWR - ACCU-02A-1.3 (HACR)						3,640	6	50	2	1													PROVISIONAL SPACE		36					
37	PWR - ACCU-02A-1.3 (HACR)		3,640									1	1											PROVISIONAL SPACE		38					
39				1,352								1	1											PROVISIONAL SPACE		40					
41							1,352					1	1											PROVISIONAL SPACE		42					
SUBTOTAL		4,140	1,352	4,992											1,380	2,400	1,200	SUBTOTAL													
TOTAL PHASE A - VA		5,520	LOAD		CONN VA		DF	LOAD		CONN VA		DF																			
AMPS 46		COOLING		9,984		100	REFRIG				100																				
TOTAL PHASE B - VA		3,752	HEATING		9,984		0	SIGN/DISP		3,600		1.25																			
AMPS 31		LIGHTING		500		1.25	KITCHEN				100																				
TOTAL PHASE C - VA		6,192	RECEPTACLES		180		10/5	EXISTING				100																			
AMPS 52		MOTORS		1,000		1.00	LBS MOTOR				1.25		TOTAL DEMAND																		
TOTAL FNLBD - VA		15,464	SUPP HEAT					SHOW/WINDOW				1.25																			
AMPS 43		MISC EQUIP		1,200		1.00	LTG TRAC				1.00		15,489 VA 46 A																		
PANELBOARD NOTES																															
DESCRIPTION IN ITALICS = EXISTING LABELED LOAD TO REMAIN																															
SIGN/DISPLAY - SIGNAGE & DISPLAY CASE																															