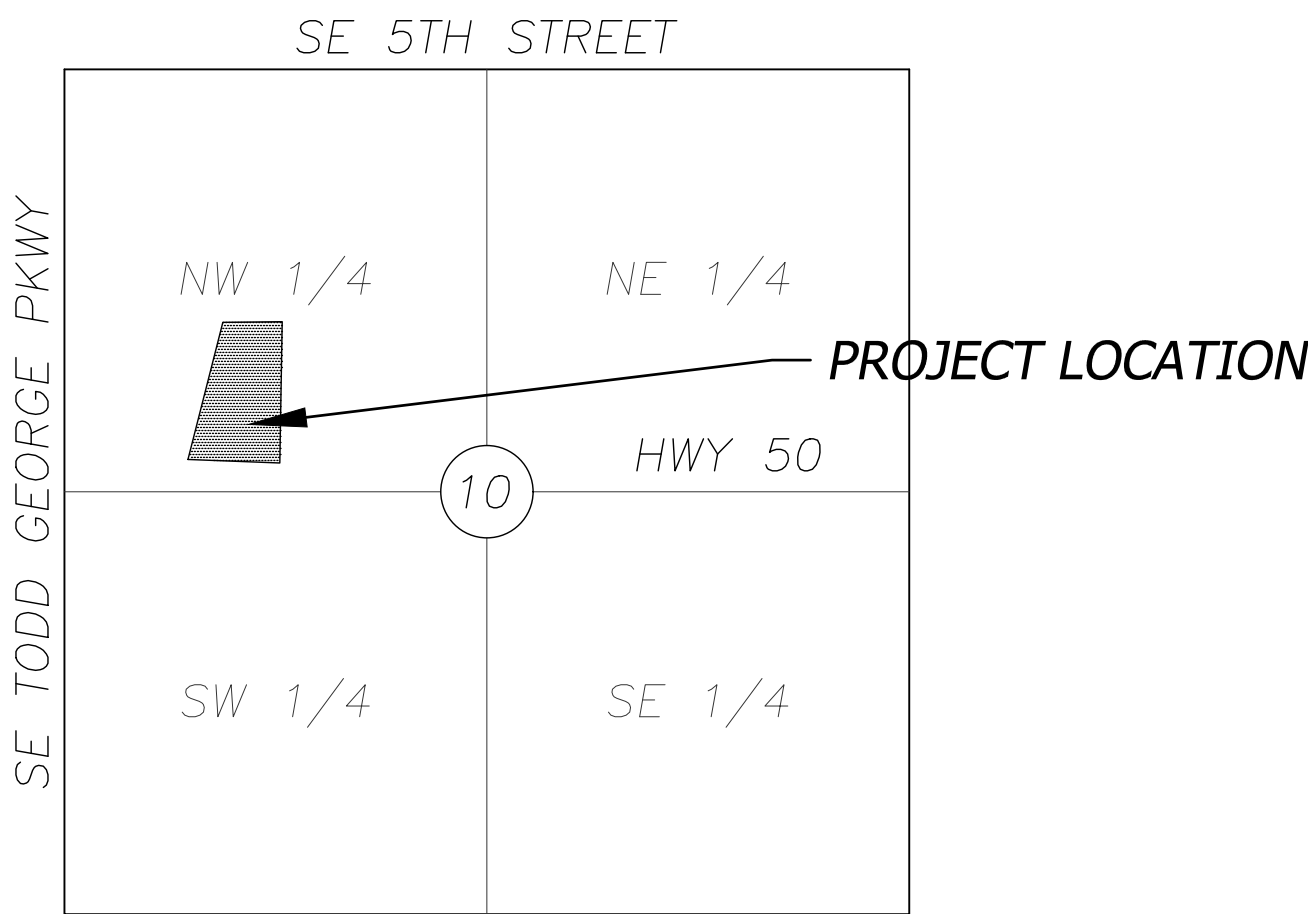


CITY OF LEE'S SUMMIT, MISSOURI
HCA LSMC ASC
SANITARY SEWER RELOCATION AND
WATER MAIN ABANDONMENT
CITY PROJECT NO. PL2023001/PL2023002

PL2023002

PRSUBD20230660



SECTION MAP

SCALE: 1" = 2000'
SECTION 10-T47N-R31W
JACKSON COUNTY, MISSOURI

UTILITY CONTACTS

CITY OF LEE'S SUMMIT, MO

PLANNING AND DEVELOPMENT

CITY HALL
JOSH JOHNSON
220 SE GREEN STREET
LEE'S SUMMIT, MO 64063
TEL: (816) 969-1600
FAX: (816) 969-1619

CODES ADMINISTRATION

CITY HALL
220 SE GREEN STREET
LEE'S SUMMIT, MO 64063
TEL: (816) 969-1200
FAX: (816) 969-1201

PUBLIC WORKS

CITY HALL
220 SE GREEN STREET
LEE'S SUMMIT, MO 64063
TEL: (816) 969-1800
FAX: (816) 969-1809

WATER UTILITIES

CITY HALL
1200 SE HAMBLIN RD
LEE'S SUMMIT, MO 64063
TEL: (816) 969-1900
FAX: (816) 969-1935

ELECTRIC COMPANY

EVERGY
TEL: (888) 471-5275

LEE'S SUMMIT FIRE DEPARTMENT

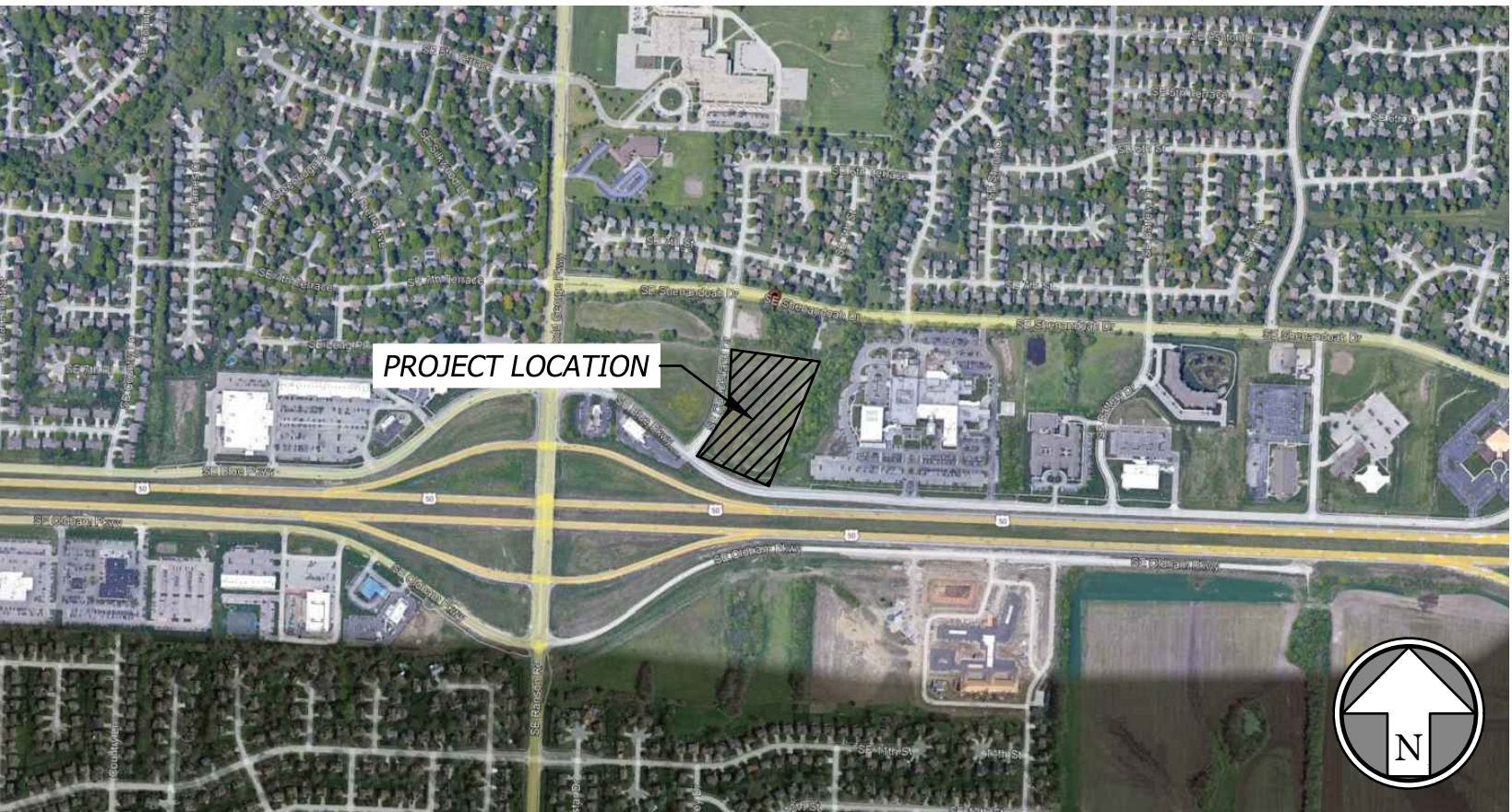
207 SE DOUGLAS ROAD
LEE'S SUMMIT, MO 64063
TEL: (816) 969-1300

GAS COMPANY

MISSOURI GAS ENERGY
TEL: (816) 756-5252

TELEPHONE COMPANY

AT&T
TEL: (800) 464-7928



VICINITY MAP

Not to Scale

Sheet List Table	
Sheet Number	Sheet Title
1	COVER SHEET
2	GENERAL LAYOUT
3	SANITARY PLAN AND PROFILE
4	EROSION CONTROL PLAN
5	CONSTRUCTION DETAILS

RELEASED FOR CONSTRUCTION
As Noted on Plan Review

Development Services Department
Lee's Summit, Missouri
02/24/2023

PREPARED & SUBMITTED BY:

BHC RHODES
OVERLAND PARK, KANSAS

ERIC BYRD, P.E.

02/01/2023
DATE

APPROVED:

BY THE CITY OF LEE'S SUMMIT, MISSOURI.

CITY ENGINEER

DATE

All existing utility locations shown are approximate only and are not guaranteed to be accurate or all inclusive. Contractor shall be responsible for contacting all utility companies and verifying the actual field locations of all utilities prior to any construction activity. Contractor shall keep all utility locations current. Utilities damaged through the negligence of the contractor to obtain the proper field locations shall be the responsibility of the contractor to repair or replace at their expense and at the direction of the utility company. The contractor shall pothole and survey all utility crossings prior to construction of any portion of storm sewer, sanitary sewer laterals, underdrains, conduit and any other subsurface element of the project. The survey information shall be forwarded to the project engineer for review. The contractor shall not begin construction on any subsurface element on the project without the approval of the project engineer. Utility coordination, potholing/surveying shall be subsidiary to other bid items.

Dig Safely. 811
Missouri One-Call
1-800-344-7483

Rev	Date	Description	By	App.
1	2/1/23	City Comments		



Prepared For:
HCA LSMC ASC
1950 SE Sherandoah Drive
LEE'S SUMMIT, MO 64063

SEWER RELOCATION AND WATER ABANDONMENT
HCA LSMC ASC
LEE'S SUMMIT, MO 64063
COVER SHEET

Design: EB Drawn: JS
Checked: EB
Issue Date: 12/21/2022
Project Number: 34660

X 00 UTILITY CONSTRUCTION NOTES

W - WATER SERVICE INFORMATION - CITY OF LEE'S SUMMIT

- 01 REMOVE EXISTING 6" WATER MAIN FROM EXISTING VALVE AT SOUTH END OF SITE TO THE NORTH END OF THE PROJECT SITE. GENERAL LENGTHS ARE PROVIDED BELOW.
02 REMOVE EXISTING 6" WATER VALVE.
03 REMOVE 10' SECTION OF WATER MAIN PIPE.
04 END OF PIPE SHALL BE SEALED WITH A 1-FOOT THICK PLUG OF NON-SHRINK GROUT SEALED WITH A PORTLAND CEMENT GROUT.
05 EXISTING WATER MAIN PIPE TO BE ABANDONED IN PLACE SHALL HAVE THE WATER DRAINED OUT TO THE FULLEST EXTENT PRACTICABLE PRIOR TO HAVING THE ENDS SEALED.
06 INSTALL FIRE HYDRANT, 6" GATE VALVE, AND THRUST BLOCKING AT END OF REMOVED PIPE

UTILITY GENERAL NOTES

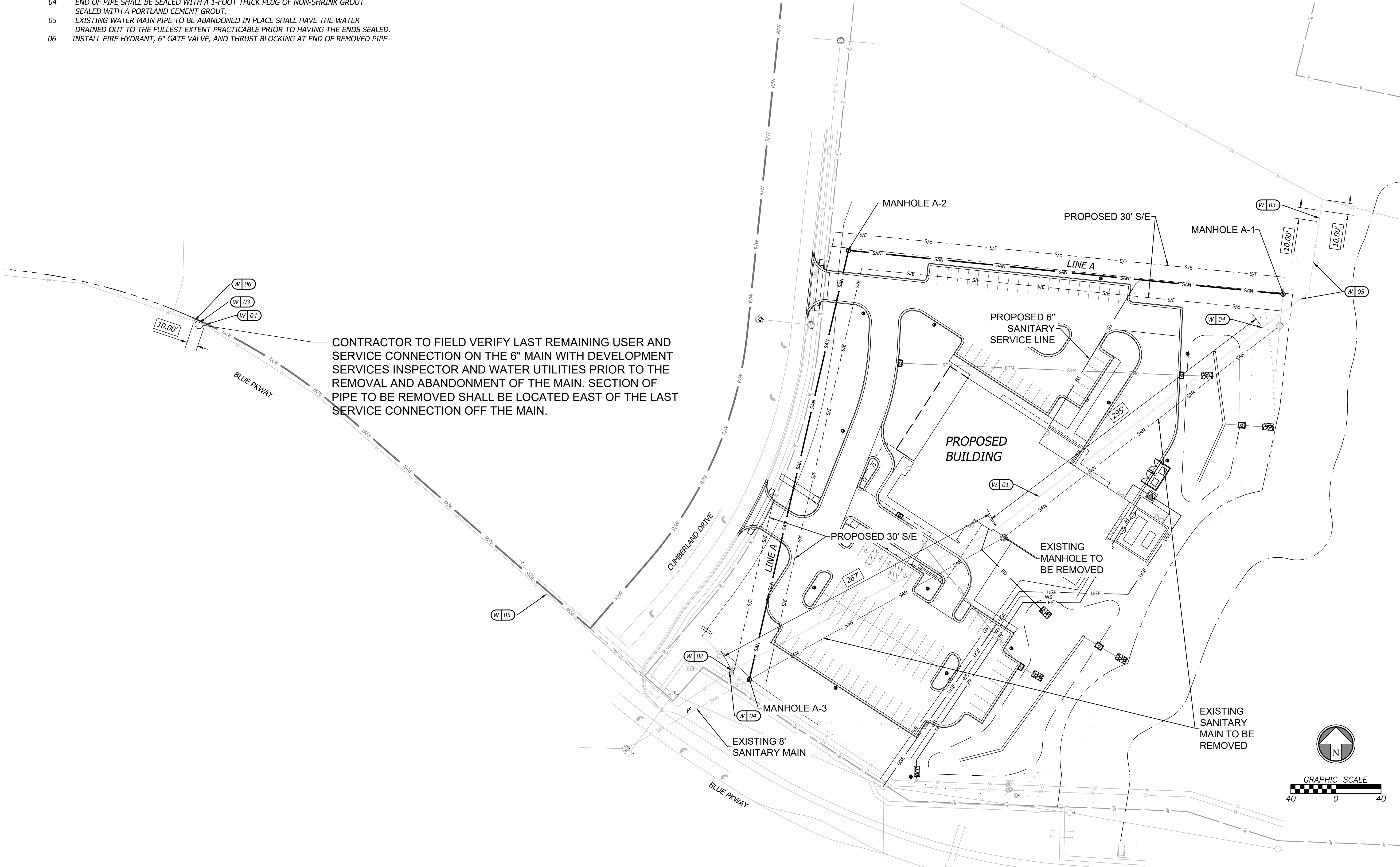
1. CONTRACTOR SHALL REFER TO ALL SPECIFICATIONS, GUIDELINES, AND INSTALLATION DRAWINGS FROM THE CITY OF LEE'S SUMMIT.
2. CONTRACTOR TO ENSURE 18" MINIMUM SEPARATION BETWEEN WATER MAIN AND STORM/SANITARY LINES AT CROSSINGS PER LEE'S SUMMIT DESIGN STANDARDS. CONTRACTOR TO CALL CIVIL IF ANY CONFLICTS BETWEEN UTILITIES ARE FOUND.
3. CONTRACTOR TO RESTORE EXISTING CONDITIONS IF DEMOLISHED/DAMAGED DURING CONSTRUCTION TO MEET CITY OF LEE'S SUMMIT STANDARDS.

RELEASED FOR CONSTRUCTION

As Noted on Plan Review

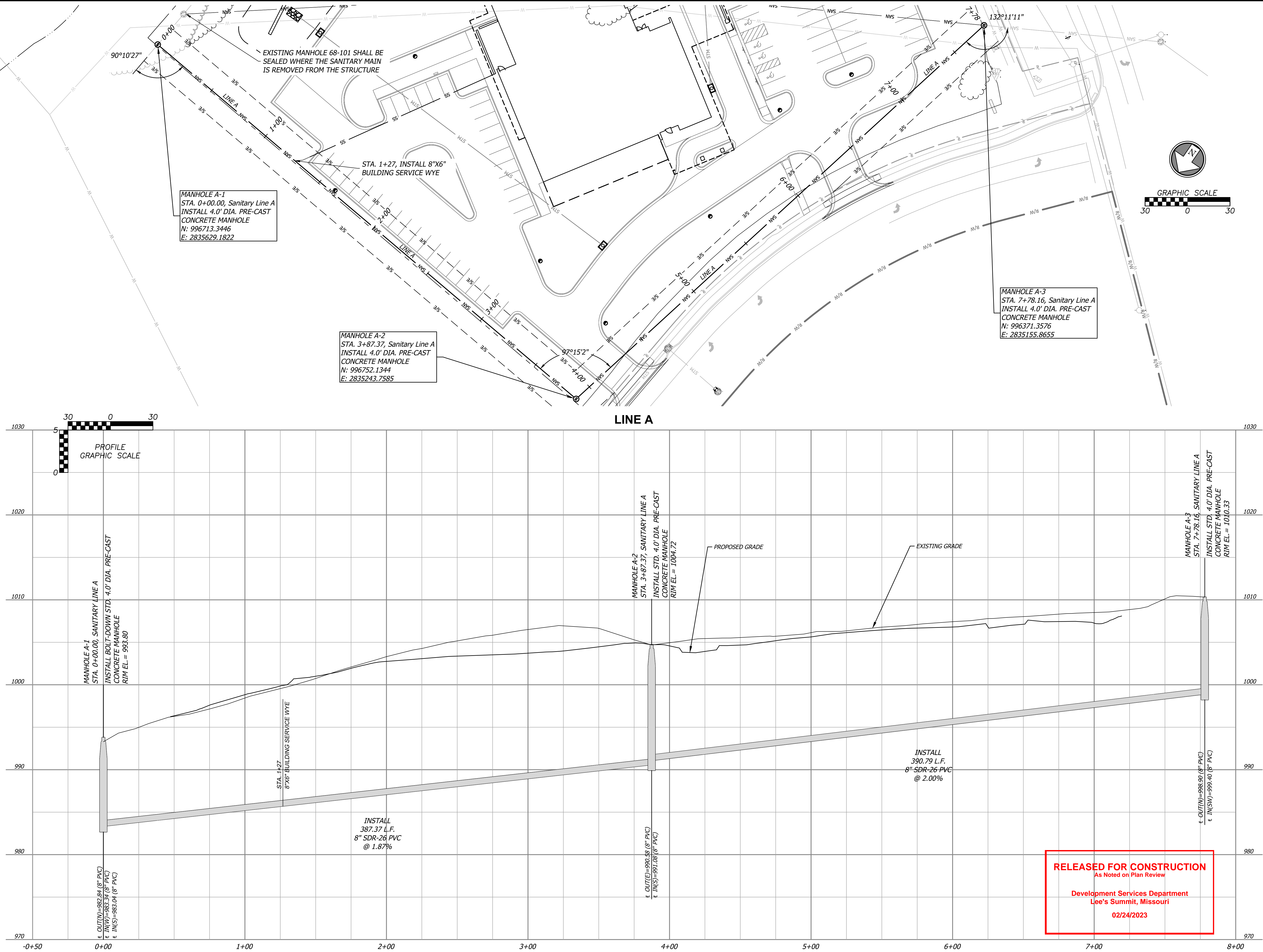
Development Services Department
Lee's Summit, Missouri

02/24/2023



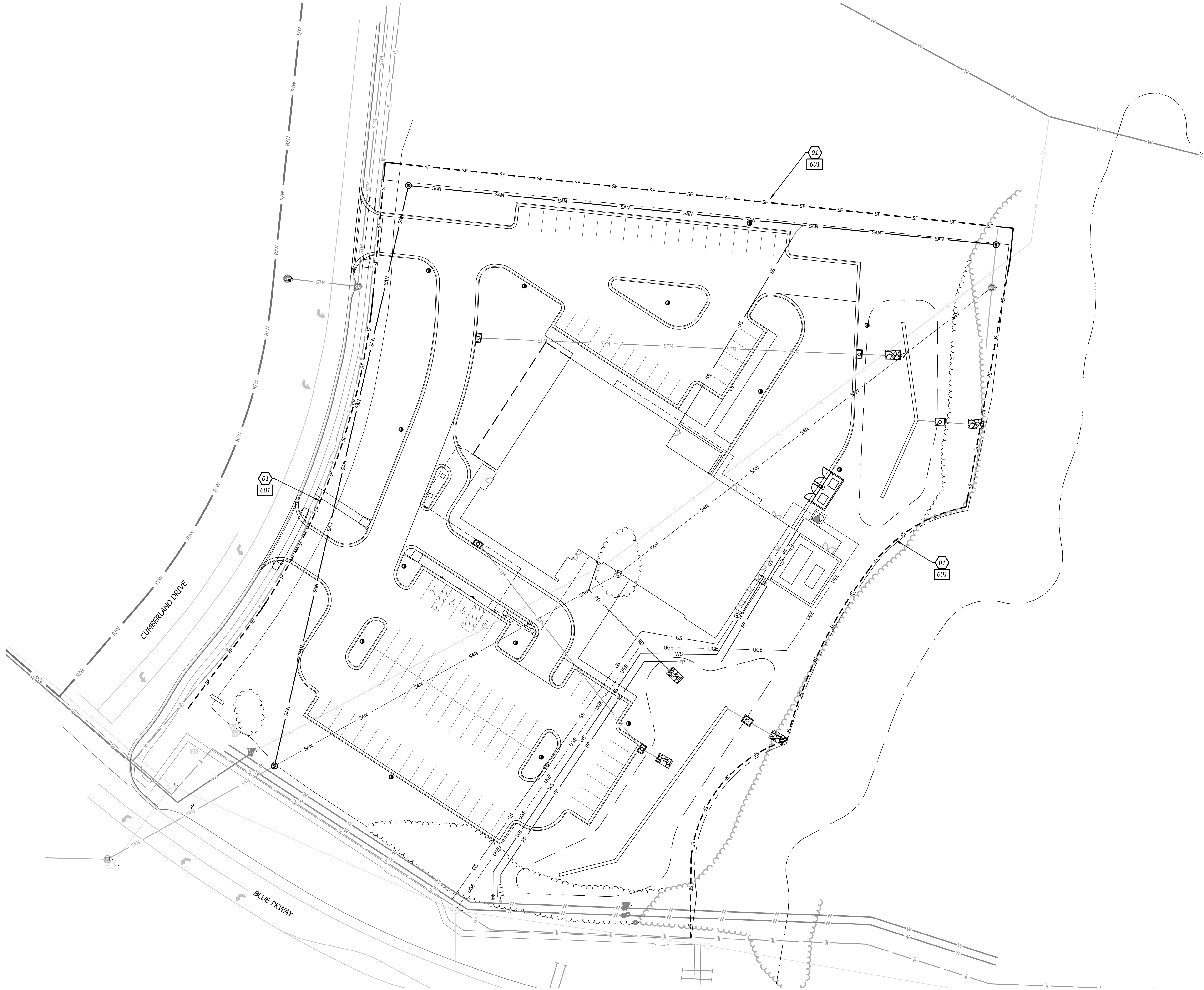
SEWER RELOCATION AND WATER ABANDONMENT		HCA LSMC ASC		LEE'S SUMMIT, MO 64063			
GENERAL LAYOUT		HCA LSMC ASC		1950 E Shenandoah Drive LEE'S SUMMIT, MO 64063			
Design:	EB	Drawn:	JS				
Checked:	EB						
Issue Date:	12/21/2022						
Project Number:	34660						
2		Rev		Date	By		
		1		2/1/23			
				City Comments			
				Description			
				App.			





SEWER RELOCATION AND WATER ABANDONMENT	
HCA LSMC ASC	
LEE'S SUMMIT, MO 64063	
SANITARY PLAN AND PROFILE	
Design: EB	Drawn: JS
Checked: EB	
Issue Date: 12/21/2022	
Project Number: 34660	
Prepared For: HCA LSMC ASC	
1950 Shenandoah Drive LEE'S SUMMIT, MO 64063	
Rev	Date
1	2/1/23
By	App.

Feb 01, 2023 - 9:59am Plotted By: Eric Byrd V:\034660-hca lsmc arc\04-DWG\Eng\Sheet\Sewer\034660-SFTS-ESN-SS.dwg Layout: SS ERSN CTRL PLAN

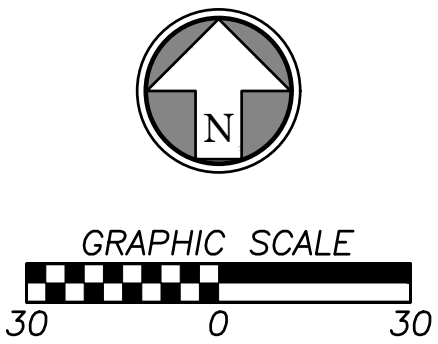


- CONSTRUCTION NOTES**
- 01 FILTER FABRIC SILT FENCE TO BE PLACED

- DETAILS**
- SEE DETAIL (SHEET 5) FOR THE FOLLOWING
- 601 FILTER FABRIC SILT FENCE

EROSION CONTROL LEGEND

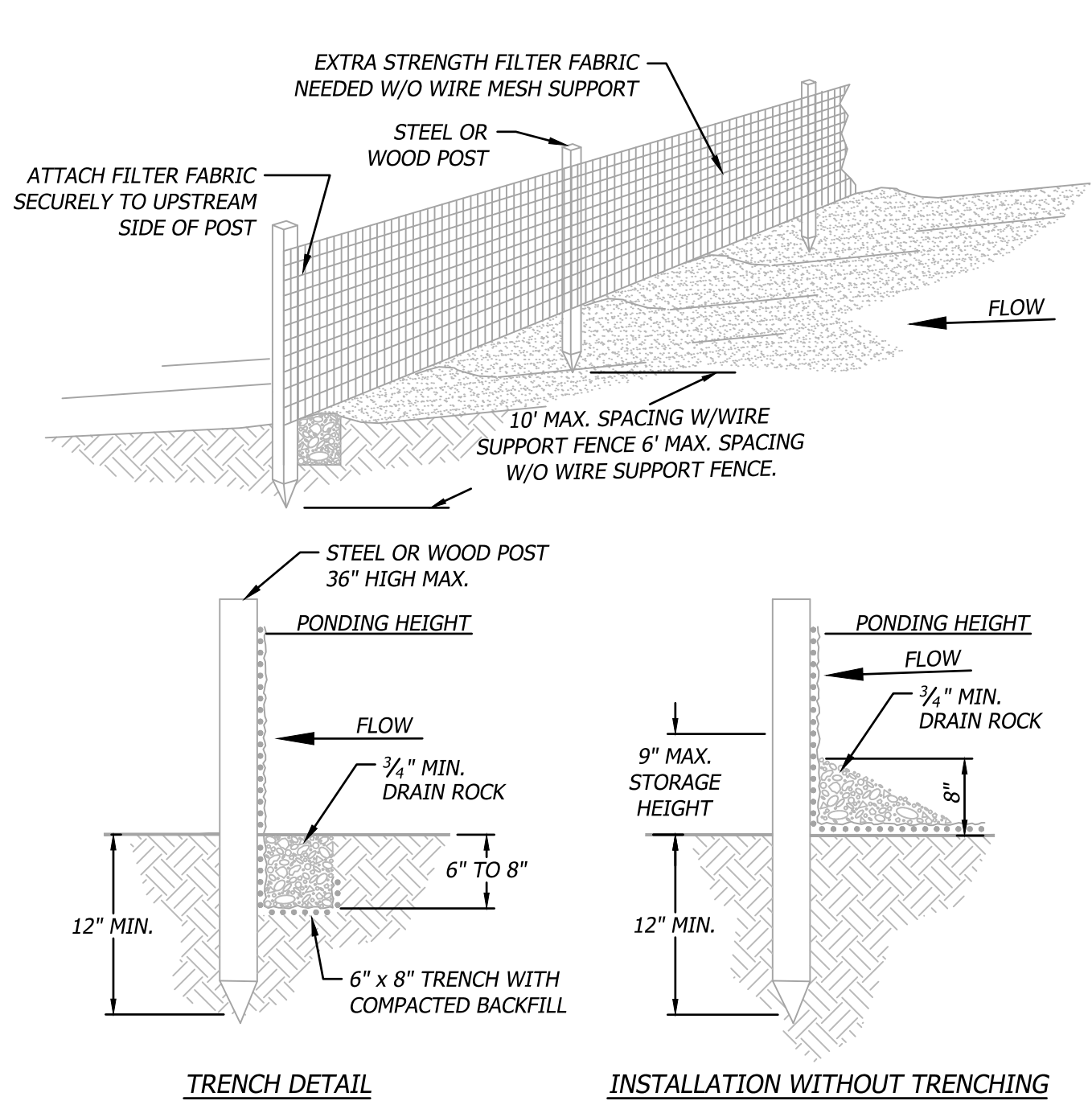
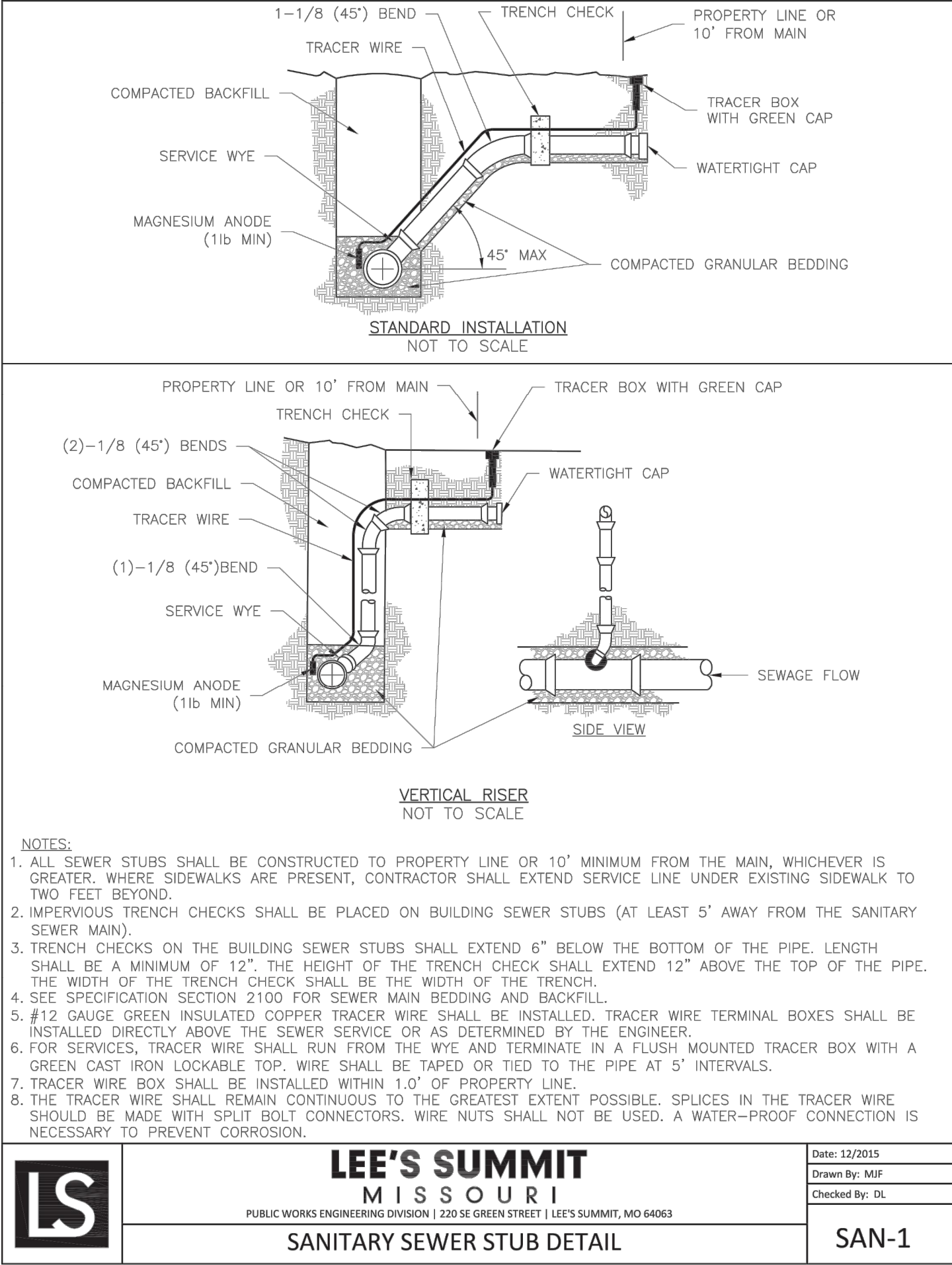
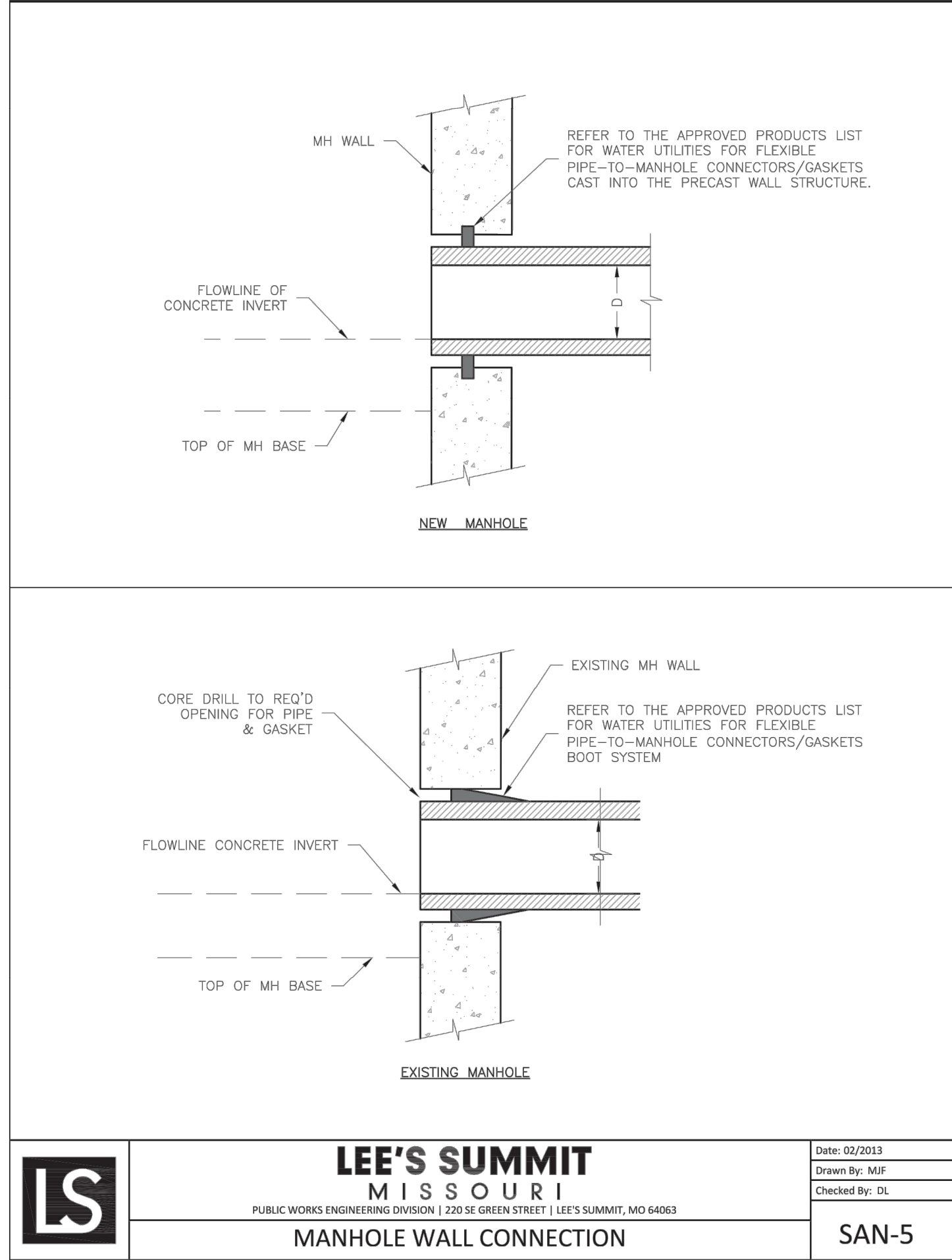
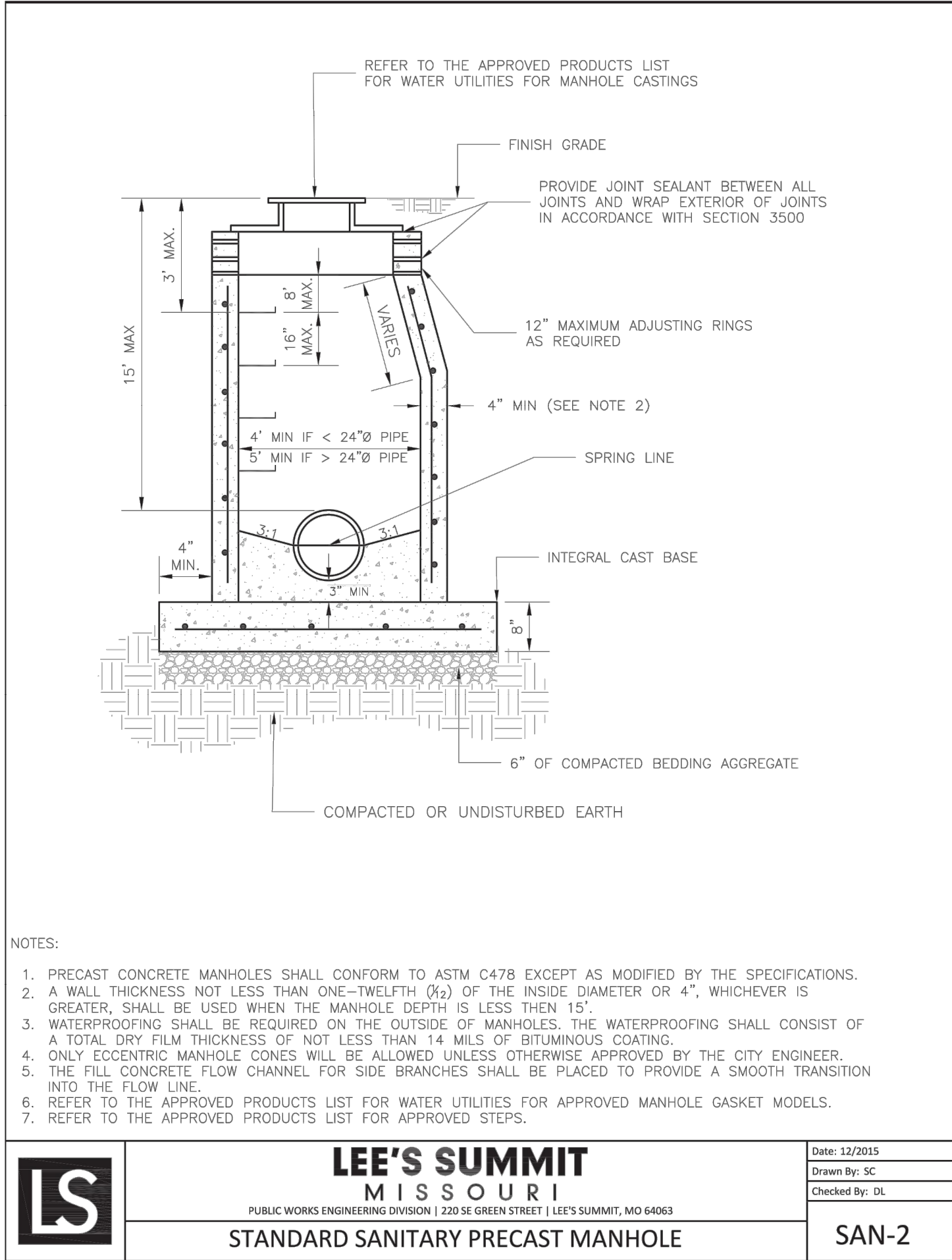
--- SF --- SILT/SEDIMENT FENCE



RELEASED FOR CONSTRUCTION
As Noted on Plan Review

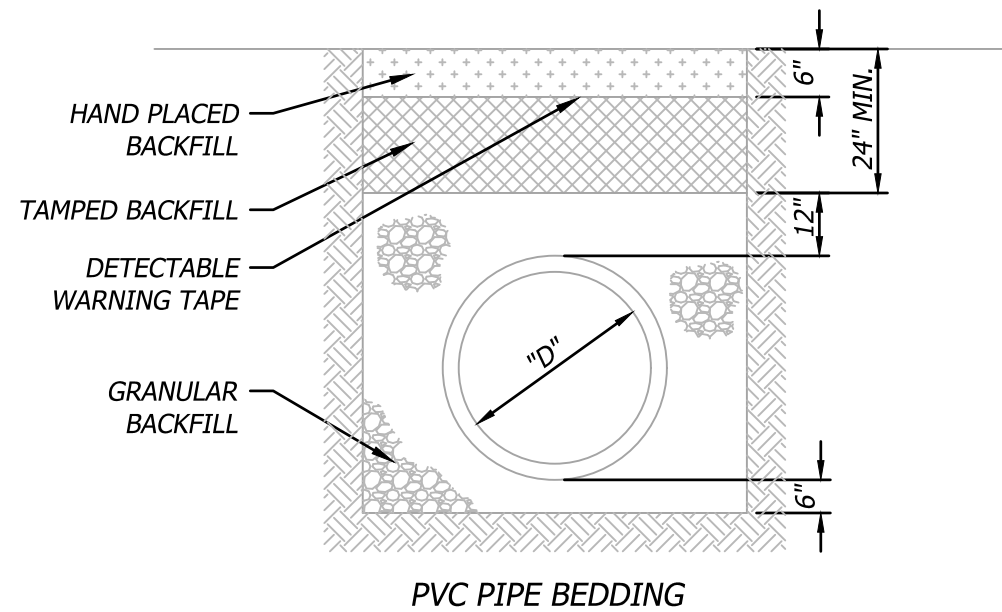
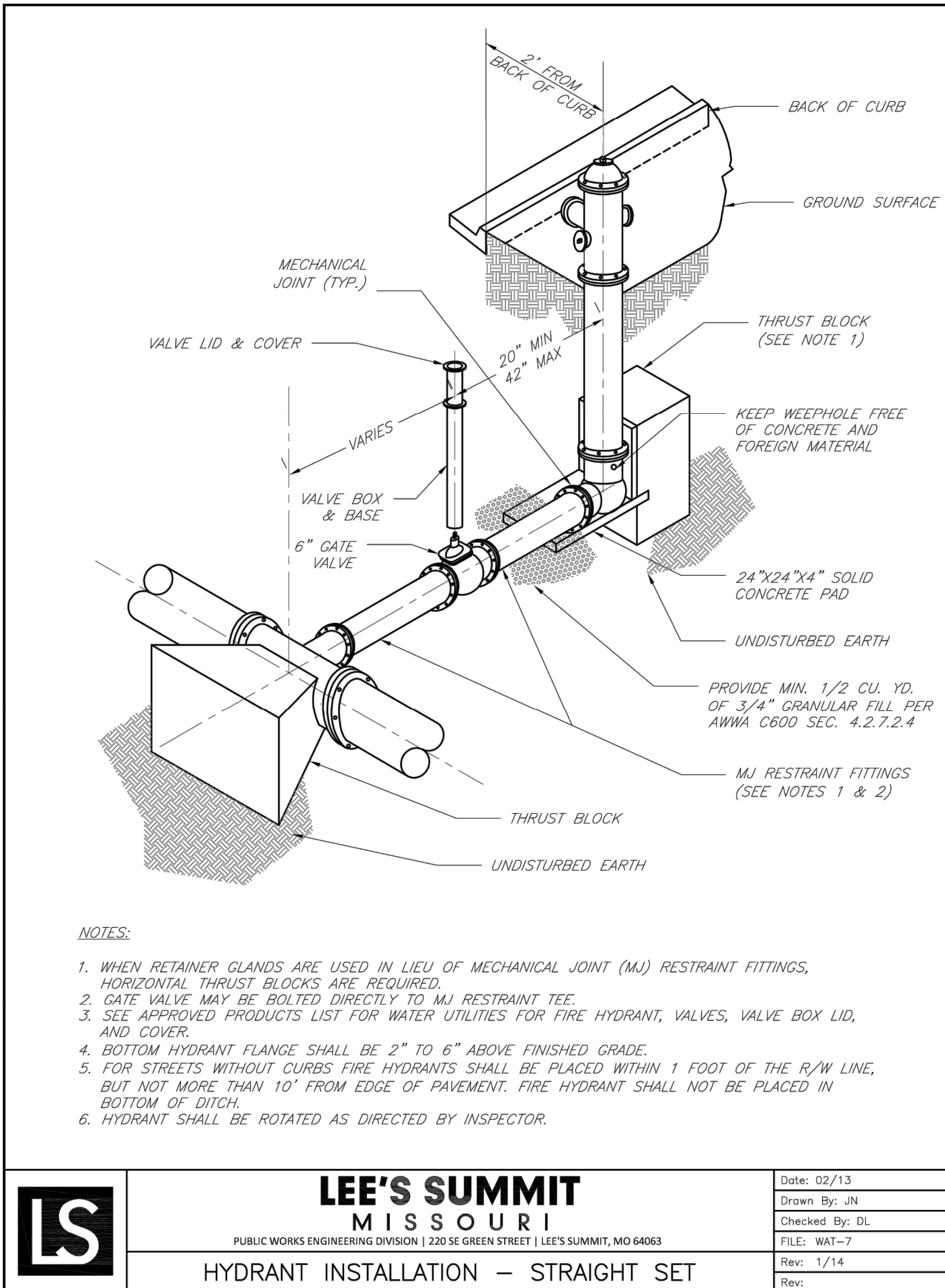
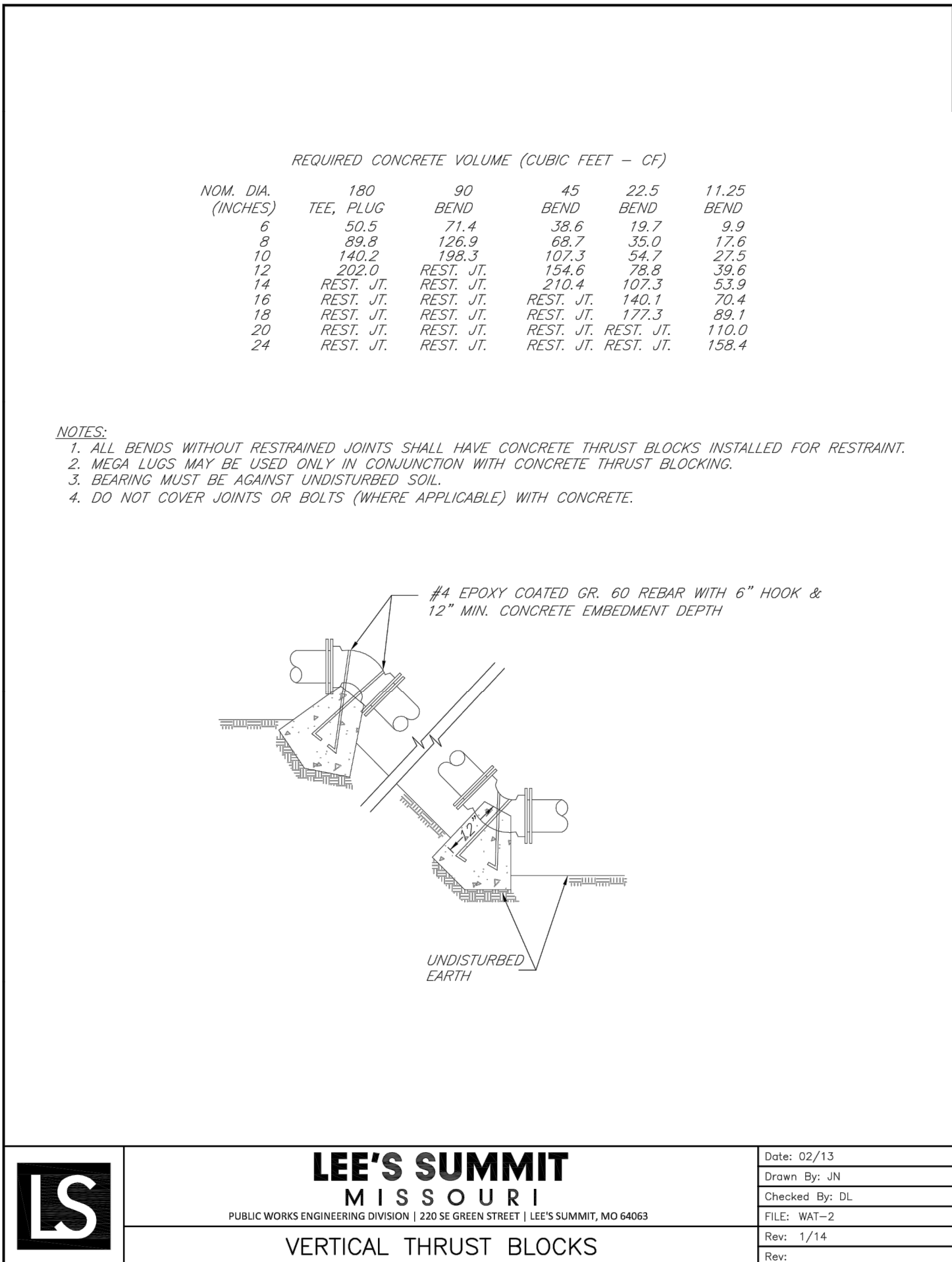
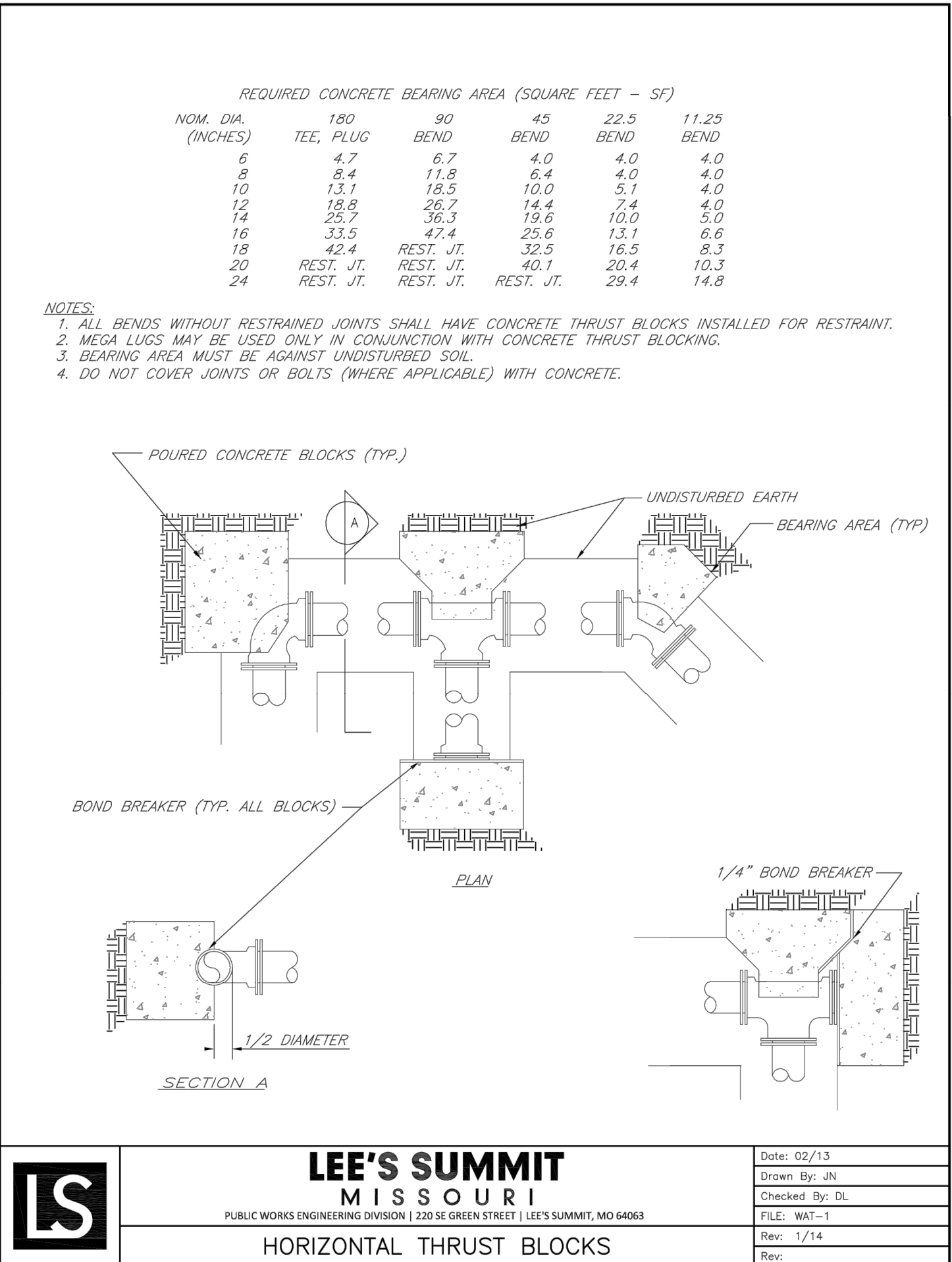
Development Services Department
Lee's Summit, Missouri
02/24/2023

SEWER RELOCATION AND WATER ABANDONMENT HCA LSMC ASC LEE'S SUMMIT, MO 64063		EROSION CONTROL PLAN	
Design: EB	Drawn: JS	Project Number: 34660	
Checked: EB	Issue Date: 12/21/2022		
Prepared For: HCA LSMC ASC 1950 Shenandoah Drive LEE'S SUMMIT, MO 64063		City Comments	
Date		Description	
1 2/1/23		1	
Rev		By	
App			



601 Filter Fabric Silt Fence

Not to Scale



306 Pipe Bedding

Not to Scale

RELEASED FOR CONSTRUCTION

As Noted on Plan Review

Development Services Department

Lee's Summit, Missouri

02/24/2023