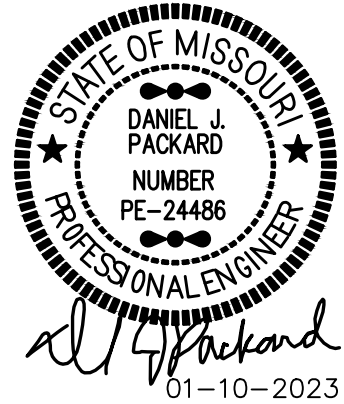


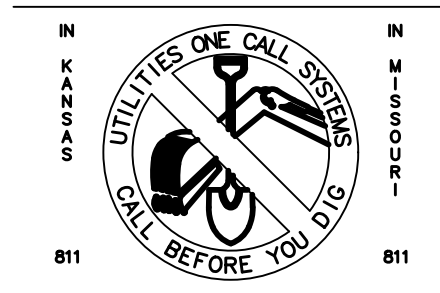
OTHER INFRASTRUCTURE NOTE:

OTHER ADJACENT INFRASTRUCTURE (HOUSE, PAVING, STORM SEWER, SANITARY SEWER, WATER, PHONE AND CABLE, ETC) MAY NOT BE SHOWN OR SHOWN ACCURATELY. FIELD VERIFY LOCATIONS. PROTECTIVE ENCASEMENTS OF PIPES, IF NEEDED, UNDER OR THROUGH RETAINING WALL ARE BY OTHERS.



RETAINING WALL GENERAL NOTES (STONE BLOCK):

1. SEE DRAWING OF MAX RETAINING WALL SECTION ON SHEET RW1.2 FOR ADDITIONAL INFORMATION.
2. DESIGN LOADS FOR WALL - SEE SECTION ON RW1.2:  
RETAINED SOIL ----- PHI  $\geq$  26 DEG. & 120 PCF
3. WALL BLOCKS ARE FLINT HILLS GRAY LIMESTONE WITH WEIGHT OF 155 PCF. ALL SIDES OF STONE ARE ROUGH (THOUGH THEY ARE SHOWN SMOOTH/STRAIGHT ON THE DRAWINGS).
4. DRAINAGE FILL SHALL CONSIST OF FREE DRAINING CRUSHED STONE, 3/8" TO 3/4", OR COARSE GRAVEL. NO MORE THAN 5% SHALL PASS THE NO. 200 SIEVE w/ A MAX SIZE OF 1". AT LEAST 12" OF DRAINAGE FILL MUST EXTEND BEHIND WALL BLOCK UNITS UP TO ABOUT 12" OF FINAL TOP OF BLOCK ELEVATION.
5. FOUNDATION SOIL/ROCK SHALL BE EXCAVATED AS REQUIRED FOR LEVELING PAD PER THE DRAWINGS.
6. FOUNDATION SOIL/ROCK (RESIDUAL SOIL/ROCK OR STRUCTURAL FILL) NOT MEETING THE REQUIRED NET BEARING STRENGTH OF 2000 PSF FOR MAX RETAINING WALL (w/ F.S. = 2) SHALL BE REMOVED AND REPLACED WITH ACCEPTABLE MATERIAL.
7. OVER-EXCAVATED AREAS SHALL BE FILLED w/ APPROVED, COMPACTED, STRUCTURAL FILL OR FLOWABLE FILL MATERIAL.
8. LEVELING PAD MATERIAL SHALL BE AGGREGATE BASE COURSE PLACED, AS NEEDED, ON SUITABLE SOILS/FILL/ROCK, TO AN APPROXIMATE THICKNESS OF 6" RESULTING IN A FIRM PAD FOR PLACEMENT OF THE BASE BLOCK COURSE.
9. STEP LEVELING PAD AS NEEDED TO 'FOLLOW' GRADE AT 14" (+/-) EACH. SLOPE BOTTOM OF LEVELING PAD AT STEP 1/1, MAXIMUM. MAINTAIN THE SAME PAD MATERIAL THICKNESS 'INTO' AND 'OUT OF' STEPS.
10. LEVELING PAD SHALL BE SET, AND WORKED, TO MAXIMIZE CONTACT WITH THE BASE BLOCK'S UNDERSIDE.
11. THE FIRST COURSE OF BLOCKS SHALL BE PLACED ON THE PREPARED PAD WITH THE FRONT EDGES TIGHT TOGETHER. ALL UNITS SHALL BE CHECKED FOR LEVEL AND ALIGNMENT.
12. UNITS SHALL BE PLACED SIDE-BY-SIDE FOR THE FULL LENGTH OF THE WALL ALIGNMENT.
13. RETAINING WALL BASE BLOCK NOT TO EXTEND PAST PROPERTY OR R/W LINE.
14. SUBSEQUENT COURSES SHALL BE OFFSET FROM THE VERTICAL JOINTS BELOW. PLACE FILTER FABRIC AS 'SCREENS' IN THE VERTICAL JOINTS.
15. AT THE END OF EACH DAY'S OPERATION, SLOPE BACKFILL TO DIRECT RUNOFF AWAY FROM WALL FACING. MINIMIZE RUNOFF FROM OTHER AREAS ENTERING THE WALL BACKFILL.
16. A MINIMUM OF 3 FEET SHALL BE MAINTAINED BETWEEN THE FACE OF WALL AND THE OPERATION OF HEAVY EQUIPMENT.



**Packard Engineering**

21021 Oak Drive  
Belton, Missouri 64012  
Phone (816)767-7222  
Fax (816)-767-8105  
Email dan@packardstructuralengineering.com

**Retaining Wall General Notes**

**Stone Gravity Retaining Wall**  
2151 NW Killarny Lane, Lee's Summit,  
Jackson County, Missouri

**Chris Schmuck Retaining Walls, LLC**

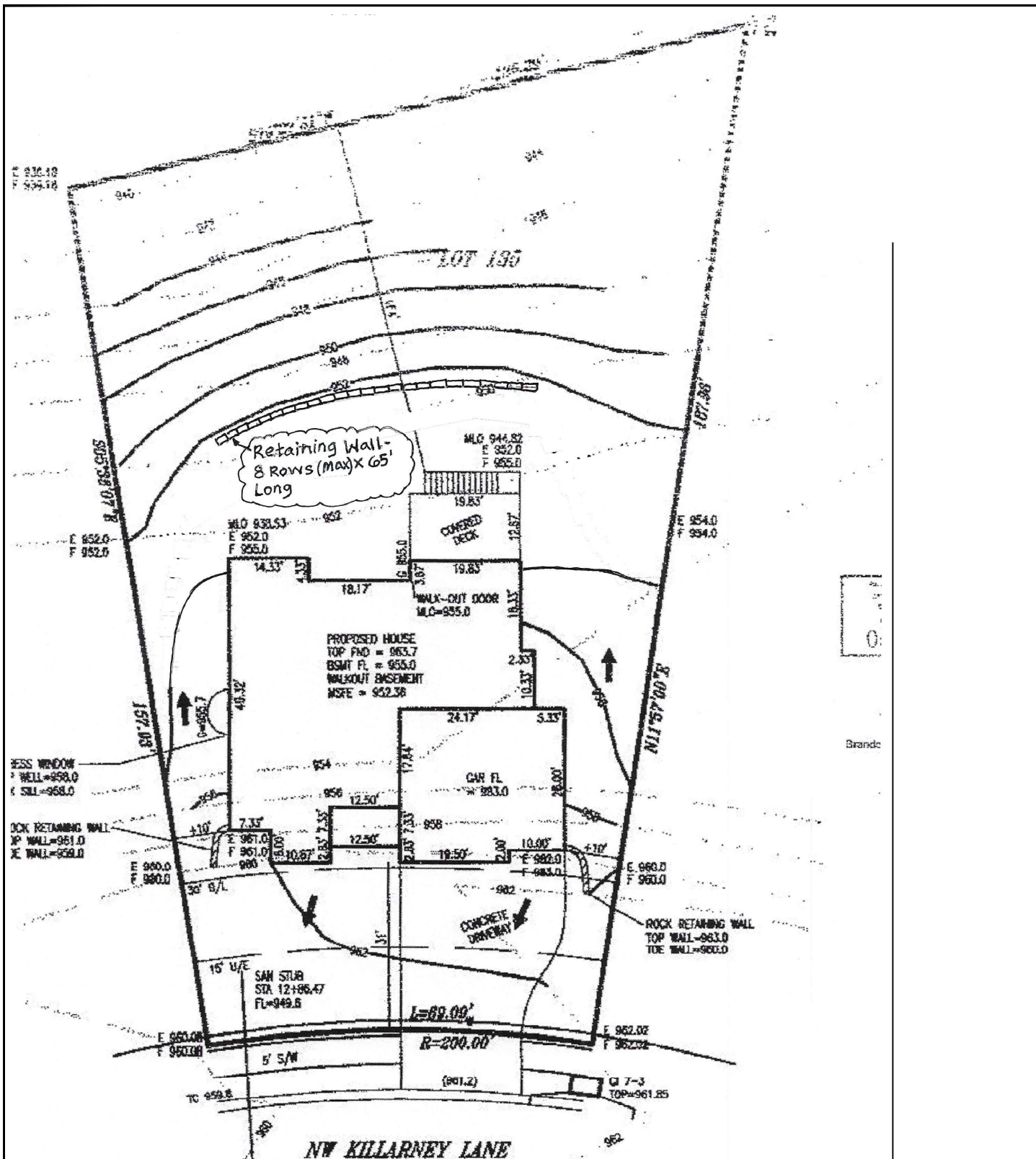
DATE: 01-10-2023

PROJECT# CSR22010

REVISION DATE:

**RW1.0**

© Copyright 2023



This Partial Plot Plan (Prepared by Others) Shown for Reference Only

## Packard Engineering

21021 Oak Drive  
Belton, Missouri 64012  
Phone (816)767-7222  
Fax (816)-767-8105  
Email dan@packardstructuralengineering.com

## Retaining Wall Layout

Stone Gravity Retaining Wall  
2151 NW Killarney Lane, Lee's Summit,  
Jackson County, Missouri

Chris Schmuck Retaining Walls, LLC

DATE: 01-10-2023

PROJECT# CSR22010

REVISION DATE:

RW1.1

© Copyright 2023

