



Tuesday, February 7, 2023

Craig Bruning  
New Mark Homes  
5207 NW Crooked Road  
Parkville, MO 64152

Project: 22-323 - Lot 47 Whispering Woods  
1608 SW 27<sup>th</sup> St.  
Lee's Summit, Missouri

Dear Craig Bruning,

This document shall serve as a response to the structural plan review comments for above referenced project ("Project").

#	PLAN REVIEW COMMENT/RESPONSE
1.	Double top plate has been over-notched in the laundry room. Response: Trim existing wall stud directly left of the notch as required to install a new, 3 <sup>rd</sup> top plate below the existing two top plates spanning the notch. See sketch below for intent.
2.	Holes drilled too closely in floor joists above the dining room. Response: Install a 2x6 of minimum 2'-6" in length centered above the drilled holes with (4) rows of (4) 10d nails evenly spaced.

Where any requirements of the previously issued documents are modified, or deleted, the unaltered provisions shall remain in effect.

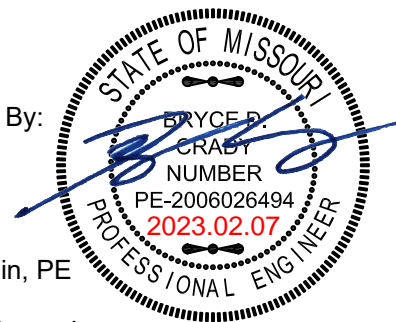
Please call if Apex Engineers, Inc. can be of further assistance.

Best Regards,

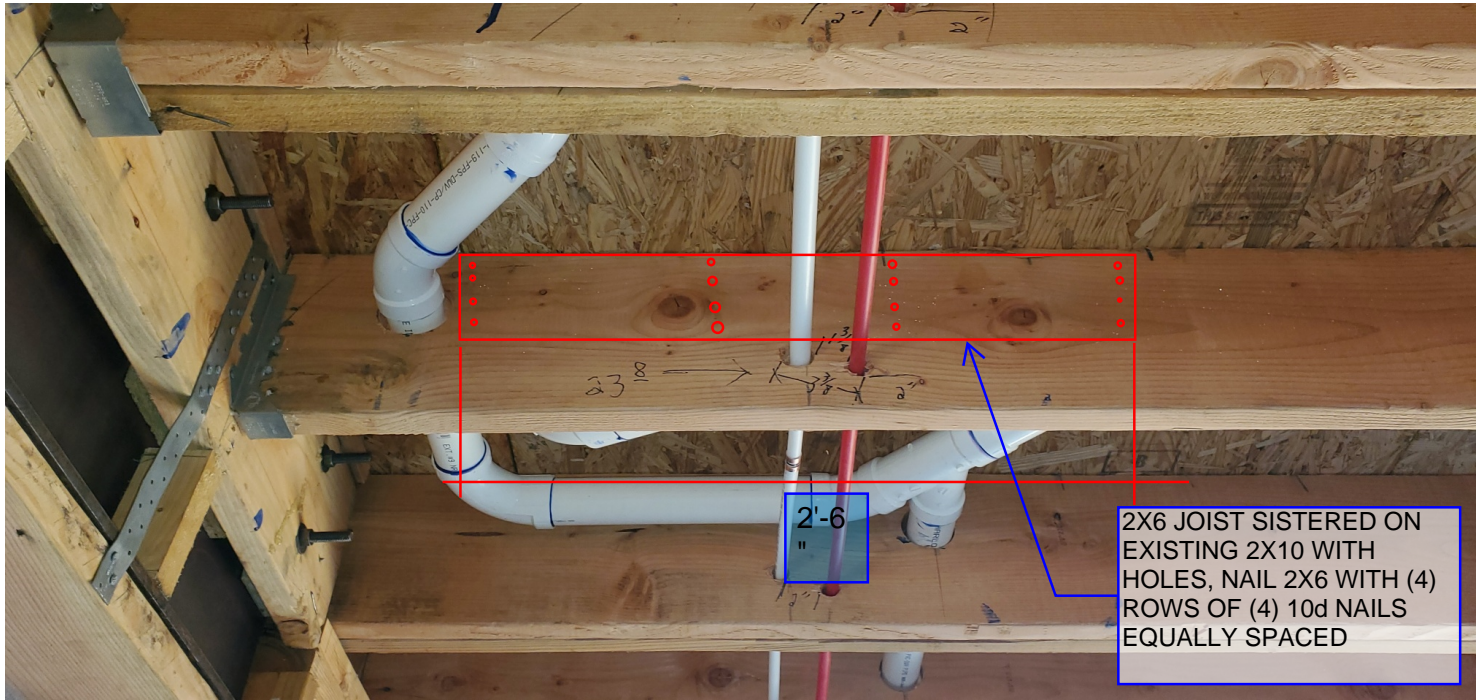
Response By:

Thomas Adams, PE  
Project Engineer  
Apex Engineers, Inc.

Reviewed By:



Mike Brunin, PE  
Principal  
Apex Engineer, Inc.



DETAILS NOT DRAWN  
TO SCALE



Install 3rd lower 2x top  
plate with min (6) 10d nails  
each side of notch.

Trim stud as required for  
new additional 3rd top  
plate

**Laundry wall**