

FLUSH MOUNT CABINET

SALES: SHAUN CRAWFORD | 800.845.9927

CLIENT: SOUTHERN BANK # 7177

DRAWING #: ao40817-3

ARTIST: R HICKS | CREATED: 12/09/22

LOCATION: 1150 NE DOUGLAS ST, LEE'S SUMMIT, MO 64506

REV DATE: N/A | REV\_0

FACING NORTH TOWARDS NE SYCAMORE ST

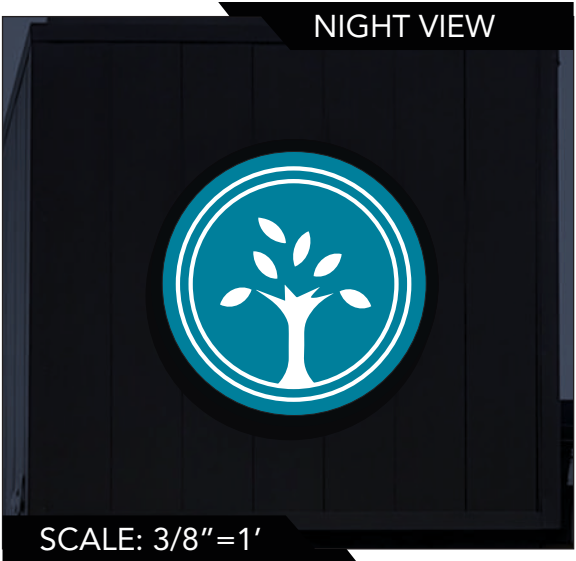
DAY VIEW



A - INTERNALLY ILLUMINATED, FLUSH MOUNTED CIRCULAR SF CABINET WITH WHITE ACRYLIC FACE, REVERSE WEED VINYL GRAPHICS, RETURN AND 2" TRIM PAINTED BLACK

PMS 633 U  
C83, M38, Y28, K2  
SOUTHERN BANK BRAND STANDARD

NIGHT VIEW

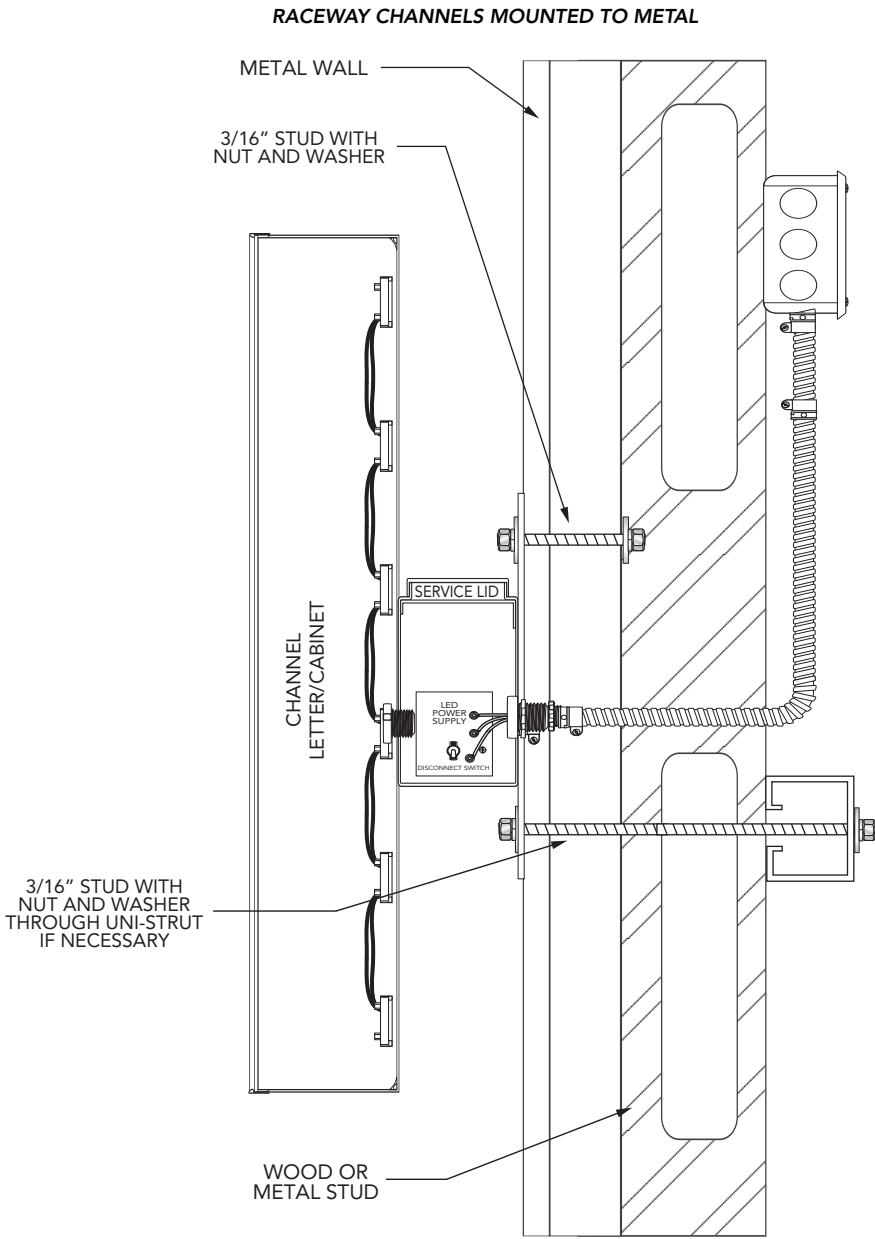


SCALE: 3/8"=1'

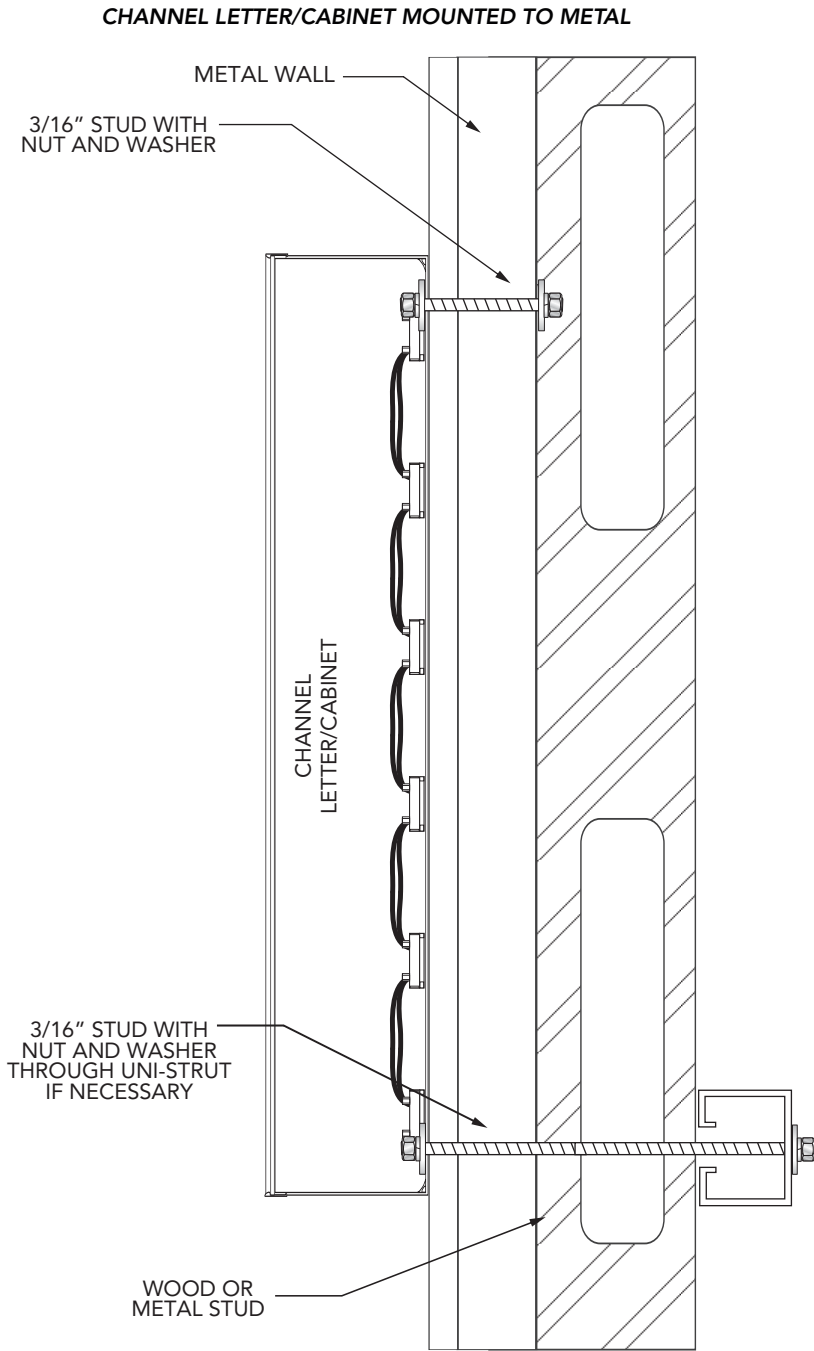
EXISTING



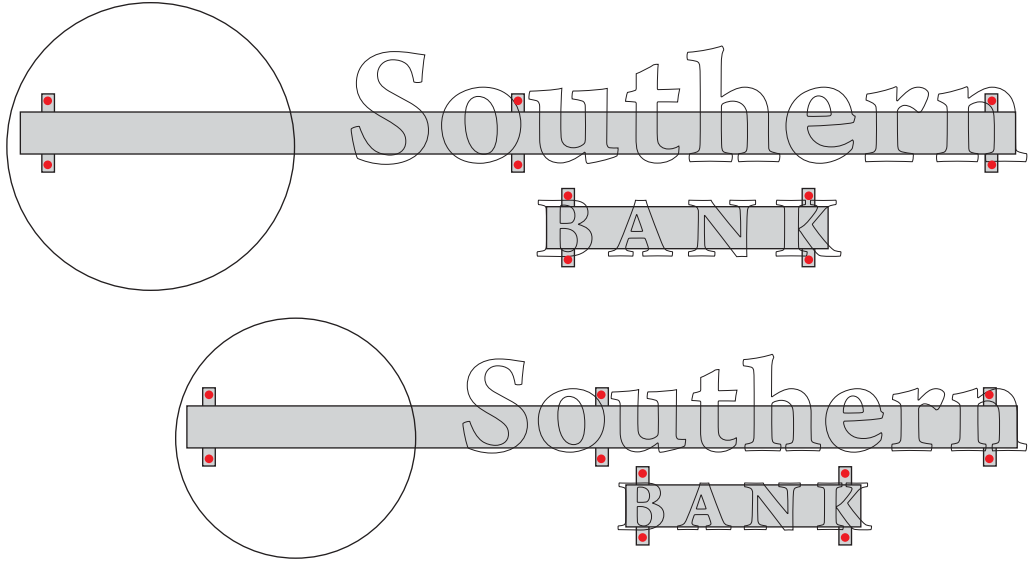
A ao40817-1, ao40817-2



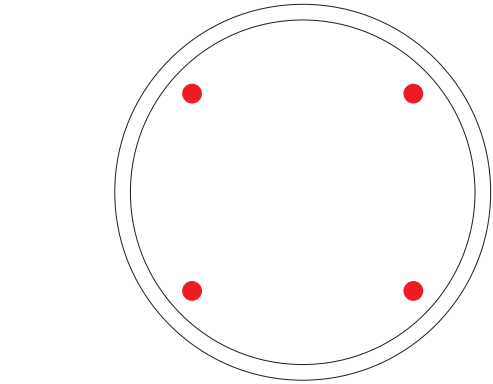
B ao40817-3



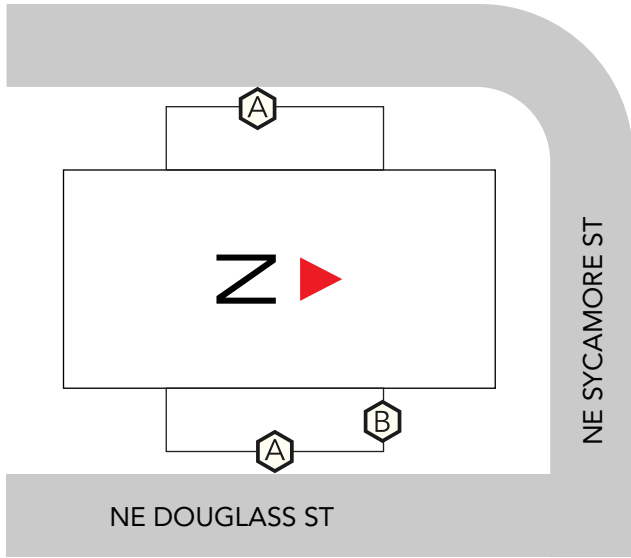
A ao40817-1, ao40817-2



B ao40817-3



PLAN VIEW



S/F CALCS

NORTH:	ao40817-3= 12.56 sqft S/F
SOUTH:	no signage
EAST:	ao40817-1= 25.52 S/F
WEST:	ao40817-2= 9.93 S/F
TOTAL S/F:	48.01 S/F
ALLOWABLE:	91LF X (3) = 273 S/F