

GENERAL ELECTRICAL NOTES:

- GENERAL**
- GENERAL ELECTRICAL NOTES APPLY TO ALL ELECTRICAL SHEETS.
 - CID ENGINEERING LLC, BEING THE AUTHOR OF THESE CONSTRUCTION DOCUMENTS, RESERVES THE RIGHT OF FINAL INTERPRETATION AS TO THEIR INTENT OR MEANING. ANY ADDITIONAL WORK OR COSTS RESULTING FROM THE CONTRACTOR'S OWN INTERPRETATION OF THE INTENT OR MEANING OF THE CONTRACTOR'S SUPPLIES TO INCLUDE ALL ACCESSORIES, COMPONENTS, PARTS, ETC. THAT MAY NOT BE INDICATED ON THESE CONSTRUCTION DOCUMENTS TO PROVIDE BUILDING CODE COMPLIANT SYSTEMS AND EQUIPMENT THAT INCLUDE ALL PERMIT AND INSPECTION FEES IN BID.
 - THE INTENT OF THE WORK INDICATED ON THESE CONSTRUCTION DOCUMENTS IS TO PROVIDE A FULLY FUNCTIONING SYSTEM IN COMPLETE WORKING ORDER. IT SHALL BE THE RESPONSIBILITY OF THE CONTRACTOR AND THE CONTRACTOR'S SUPPLIES TO INCLUDE ALL ACCESSORIES, COMPONENTS, PARTS, ETC. THAT MAY NOT BE INDICATED ON THESE CONSTRUCTION DOCUMENTS TO PROVIDE BUILDING CODE COMPLIANT SYSTEMS AND EQUIPMENT THAT INCLUDE ALL PERMIT AND INSPECTION FEES IN BID.
 - ALL ELECTRICAL WORK SHALL BE PERFORMED BY LICENSED CONTRACTORS IN ACCORDANCE WITH THE 2018 INTERNATIONAL BUILDING CODES, THE 2017 NATIONAL ELECTRICAL CODE, AND ALL LOCAL CODES AS ADOPTED BY THE AUTHORITIES HAVING JURISDICTION.
 - THE CONTRACTOR SHALL VERIFY ALL EXISTING CONDITIONS PRIOR TO SUBMITTING HIS BID. NO EXTRAS WILL BE PAID DUE TO UNANTICIPATED EXISTING CONDITIONS.
 - PLANS ARE DIAGRAMMATIC AND SHALL NOT BE SCALED. REFER TO CIVIL, STRUCTURAL AND ARCHITECTURAL DRAWINGS AND EXISTING CONDITIONS FOR DIMENSIONS. FIELD VERIFY ALL DIMENSIONS.
 - EQUIPMENT AND CONDUIT/CONDUCTOR LAYOUTS ARE DIAGRAMMATIC. FIELD COORDINATE EXACT LOCATIONS AND ROUTINGS WITH STRUCTURE, PIPING, DUCTWORK, LIGHT FIXTURES, ETC. FINAL RESULT SHALL BE EQUIVALENT TO THAT INDICATED ON DRAWINGS.
 - COORDINATE CLOSELY WITH ALL OTHER TRADES TO EXPEDITE CONSTRUCTION AND AVOID INTERFERENCE AND CONFLICTS. BEFORE ANY PIPING, DUCTWORK, CONDUIT, ETC. IS INSTALLED, IT SHALL BE COORDINATED CAREFULLY BETWEEN ALL TRADES.
 - MAINTAIN ALL CLEARANCES REQUIRED BY ELECTRICAL EQUIPMENT. COORDINATE WITH PLUMBING, HVAC, AND SPRINKLER CONTRACTORS TO MAINTAIN ALL CLEARANCES REQUIRED FOR EQUIPMENT. DO NOT ROUTE PIPING, DUCTWORK, ETC. ABOVE ELECTRICAL PANELS.
 - DRAWINGS REPRESENT FINAL RESULT. REMOVE, RELOCATE, MODIFY EXISTING EQUIPMENT, DUCTWORK, PIPING, ETC. AS REQUIRED. FIELD VERIFY EXISTING CONDITIONS AND EXIST REQUIREMENTS.
 - COORDINATE INFORMATION OUTLET, RECEPTACLE, AND OTHER DEVICE LOCATIONS WITH OWNER AND WITH MILLWORK AND WITH OTHER TRADES PRIOR TO ROUGH-IN.
 - INFORMATION OUTLET (DATA AND TELEPHONE) DEVICES, WALL PLATES, AND ASSOCIATED WIRING SHALL BE SUPPLIED AND INSTALLED BY OTHERS UNDER A SEPARATE CONTRACT WITH THE OWNER.
 - THE CONTRACTOR SHALL PROVIDE ELECTRONIC SHOP DRAWINGS/SUBMITTALS OF ALL FIXTURES AND EQUIPMENT FURNISHED UNDER THIS CONTRACT.
 - IF CONTRACTOR WISHES TO INCORPORATE PRODUCTS OTHER THAN THOSE NAMED IN SPECIFICATIONS OR HIS BID OR PRODUCTS BY MANUFACTURERS OTHER THAN THOSE LISTED AS APPROVED MANUFACTURERS, THE CONTRACTOR SHALL SUBMIT A WRITTEN REQUEST FOR REVIEW AND APPROVAL OF PROPOSED SUBSTITUTIONS TO CID ENGINEERING LLC NOT LESS THAN FIVE WORKING DAYS PRIOR TO BID DATE. APPROVAL OR ACCEPTANCE OF PROPOSED SUBSTITUTION OF MANUFACTURERS OR ITEMS IS FOR THE PURPOSES OF BIDDING ONLY AND DOES NOT RELIEVE THE PROPOSED SUBSTITUTION FROM SUBMITTAL SHOP DRAWING REVIEW AND DOES NOT CONSTITUTE PRIOR APPROVAL OF PROPOSED SUBSTITUTIONS.
 - THE CONTRACTOR SHALL BE RESPONSIBLE FOR THE COSTS OF LARGER WIRING, CONDUIT, ENCLOSURES, CONTROL AND OVERCURRENT PROTECTIVE DEVICES, ETC. RESULTING FROM SUBSTITUTION OF EQUIPMENT OTHER THAN THAT WHICH WAS THE BASIS OF DESIGN AT NO COST TO OWNER OR A/E.
 - THE CONTRACTOR SHALL GUARANTEE ALL EQUIPMENT, ACCESSORIES, AND MATERIAL FURNISHED BY HIM FOR A PERIOD OF ONE YEAR FROM FINAL ACCEPTANCE AGAINST ALL DEFECTS.
 - THE CONTRACTOR SHALL BE RESPONSIBLE FOR ENSURING COSTS TO CUT, PATCH AND REPAIR EXISTING WALL, FLOOR AND CEILING CONSTRUCTION AS REQUIRED TO INSTALL NEW FIXTURES, CONDUIT, WIRING, ETC. ARE INCLUDED IN THE BID PRICE.

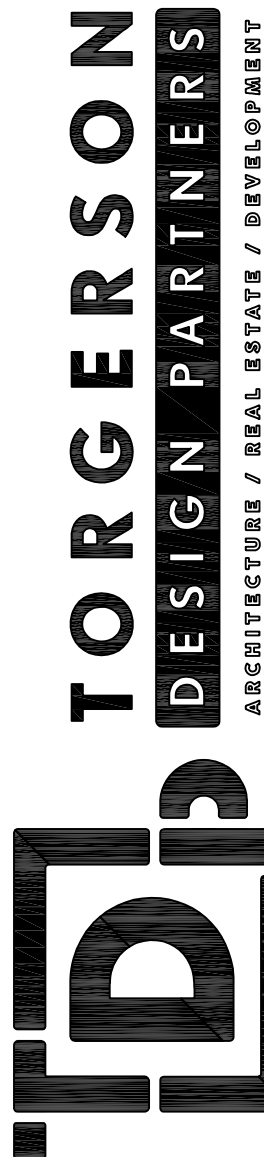
- PRODUCTS**
- LIGHT SWITCHES SHALL BE EQUIVALENT TO HUBBELL 1220 SERIES, 20-AMP, 120/277-VOLT, IN COLOR SELECTED BY THE ARCHITECT/INTERIOR DESIGNER.
 - DUPLEX RECEPTACLES SHALL BE EQUIVALENT TO HUBBELL 5300 SERIES, 20A, 125V, NEMA CONFIGURATION 5-20R, IN COLOR SELECTED BY THE ARCHITECT/INTERIOR DESIGNER.
 - ALL RECEPTACLES THROUGHOUT SHALL BE TAMPER-RESISTANT TYPE, TO COMPLY WITH N.E.C.
 - ELECTRICAL DEVICE WALL PLATES SHALL BE HIGH IMPACT NYLON PLASTIC IN COLOR AS SELECTED BY THE ARCHITECT/INTERIOR DESIGNER.
 - FEEDER AND BRANCH CIRCUIT WIRING SHALL BE COPPER, 600V WITH THHN/THMV INSULATION. BRANCH CIRCUIT WIRING SHALL BE #12 AWG MINIMUM HOMERUNS FOR BRANCH CIRCUITS OVER 75 FEET LONG SHALL BE #10 AWG; OVER 100 FEET LONG, #8 AWG UNLESS INDICATED OTHERWISE.
 - EQUIVALENT WIRING DEVICES BY BRYANT, COOPER, HUBBELL, LEVITON, OR AS APPROVED BY OWNER.
 - EQUIVALENT PANELBOARDS, LIGHTING CONTACTORS AND DISCONNECT SWITCHES BY CUTLER HAMMER, GENERAL ELECTRIC, SIEMENS, SQUARE D, OR AS APPROVED BY OWNER.

- EXECUTION**
- PROVIDE ALL ACCESSORIES, COMPONENTS, ETC. REQUIRED FOR COMPLETE INSTALLATION OF SPECIFIED EQUIPMENT.
 - PROVIDE UNISTRUTS AND ACCESSORIES AS REQUIRED FOR SUPPORT OF PIPING, EQUIPMENT, ETC.
 - COORDINATE LIGHTING AND CEILING DEVICE LOCATIONS WITH ARCHITECTURAL REFLECTED CEILING PLANS.
 - ALL WIRING SHALL BE INSTALLED IN EMT CONDUIT AND SHALL BE CONCEALED UNLESS OTHERWISE NOTED. PVC CONDUIT WILL BE ALLOWED BELOW SABS ALL TRANSITIONS FROM PVC TO STEEL CONDUIT SHALL BE MADE BELOW GRADE. MINIMUM CONDUIT SIZE FOR LIGHTING AND POWER BRANCH CIRCUITS ABOVE GRADE SHALL BE 1/2" MINIMUM CONDUIT SIZE FOR LIGHTING AND POWER BRANCH CIRCUITS BELOW GRADE SHALL BE 3/4". CONTRACTOR SHALL HAVE THE OPTION TO USE METALLIC CLAD (M/C) CABLE FOR CONCEALED BRANCH CIRCUIT WIRING.
 - MINIMUM CONDUIT SIZE FOR INFORMATION OUTLETS SHALL BE 3/4". CONDUIT STUDS SHALL BE TERMINATED WITH INSULATING BUSHINGS.
 - ALL LIGHTING AND POWER CIRCUITS SHALL HAVE A GROUNDING CONDUCTOR.
 - ALL RECEPTACLES, TELECOMMUNICATIONS OUTLETS, AND TELEVISION OUTLETS SHALL BE INSTALLED AT 18" AFF TO CENTER UNLESS NOTED OTHERWISE. ALL SWITCHES SHALL BE INSTALLED AT 48" AFF TO CENTER UNLESS NOTED OTHERWISE.
 - PROVIDE TYPED CIRCUIT DIRECTORIES FOR ALL PANELBOARDS. DIRECTORY INFORMATION SHALL INCLUDE CIRCUIT NUMBER AND EQUIPMENT SERVED.
 - INSTALL ALL ROOF EQUIPMENT, PIPE, AND CONDUIT SUPPORTS, CURBS AND PENETRATIONS IN ACCORDANCE WITH THE REQUIREMENTS OF THE ROOFING SYSTEM MANUFACTURER.
 - SUPPORT CONDUIT ON ROOF WITH PREMANUFACTURED PIPING SUPPORT EQUIPMENT TO 6-LINE C-SERIES. FIELD FABRICATED SUPPORTS CONSISTING OF LUMBER, ETC. ARE NOT ACCEPTABLE.
 - PROVIDE FACTORY FABRICATED PIPE CURB ASSEMBLIES FOR MULTIPLE CONDUIT AND PIPING PENETRATIONS THROUGH THE ROOF. PIPE CURB ASSEMBLIES SHALL BE FACTORY FABRICATED, 8" TALL (MINIMUM) GALVANIZED STEEL ROOF CURBS WITH INTERNAL BASE PLATE, 3 LB DENSITY INSULATION, WOOD WALKER, ACRYLIC CLAD THERMOPLASTIC COVER, FASTENING SCREWS, STANDING SEAM BOLTS WITH STAINLESS STEEL CLAMPS AS MANUFACTURED BY PATE, TYVBAR OR APPROVED EQUIVALENT. PROVIDE PIPE SEAL ASSEMBLIES FOR INDIVIDUAL CONDUITS OR PIPE PENETRATIONS. ALL WORK SHALL BE IN ACCORDANCE WITH ROOFING MANUFACTURER'S RECOMMENDATIONS AND REQUIREMENTS.
 - PROVIDE SLEEVES AT CONDUIT PENETRATIONS OF EXTERIOR OR FOUNDATION WALLS. SEAL PENETRATIONS WEATHERTIGHT.
 - SEAL ALL PENETRATIONS THROUGH FIRE-RATED ASSEMBLIES AS NECESSARY TO RESTORE FIRE-RESISTANCE RATING OF ASSEMBLY. REFER TO ARCHITECTURAL PLANS AND SPECIFICATIONS FOR RATED ASSEMBLIES, FIRESTOPPING MATERIALS AND REQUIREMENTS.
 - CONTRACTOR SHALL MAKE ALL FINAL CONNECTIONS TO SPECIAL EQUIPMENT. PROVIDE ADAPTERS, FITTINGS, ETC. FOR ALL EQUIPMENT AS REQUIRED. COORDINATE SPECIFIC REQUIREMENTS WITH EQUIPMENT SUPPLIERS. REFER TO SPECIAL EQUIPMENT DRAWINGS FOR ADDITIONAL INFORMATION.
 - ELECTRICAL CONTRACTOR SHALL PROVIDE ROUGH-IN FOR THERMOSTATS AND SENSORS. PROVIDE SINGLE-CONDUCTOR BOTH 6-75" CONDUIT TO ABOVE ACCESSIBLE CEILING OR TO ASSOCIATED EQUIPMENT. THERMOSTATS, SENSORS, AND WIRING SHALL BE PROVIDED BY MECHANICAL CONTRACTOR. REFER TO HVAC PLANS FOR THERMOSTAT AND CONTROL LOCATIONS.
 - BRANCH CIRCUIT WIRING SERVING EQUIPMENT, LIGHTING, AND RECEPTACLES IN PATIENT CARE AREAS SHALL COMPLY WITH MED SECTION 517.13. METAL RACEWAYS, ARMORED CABLES AND ASSOCIATED WIRING SHALL BE LISTED AS A GROUND RETURN AND SHALL CONTAIN A SEPARATE EQUIPMENT GROUNDING CONDUCTOR AS SPECIFIED.



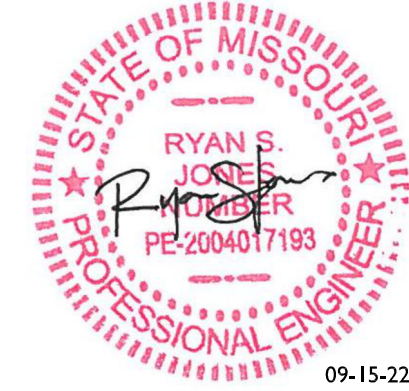
Engineering | Energy | Innovation
2225 West Chesterfield Boulevard, Suite 200, Springfield, MO 65807
P: 417.877.1700 F: 417.324.7735 www.cid-eng.com
Missouri State Certificate of Authority #2005026903

Special Notice: Drawings prepared by CID LLC are instruments of service for use solely with respect to this project. CID LLC retains ownership and all common law, statutory and other reserved rights including copyright. This drawing shall not be reprinted in part or in full for any other work without prior written consent by CID and appropriate compensation to CID LLC. Unintentional changes to the design without prior written approval from CID LLC, shall be at the contractor's expense. CID LLC shall not be responsible for any damage, liability or costs resulting directly or indirectly from such changes to the fullest extent of the law.



116 NORTH 2ND AVENUE - OZARK, MO 65721 - P (417) 581-8889
F (417) 581-9002
ARCHITECTURAL CORPORATION MISSOURI LICENSE NUMBER: A-201001427

7 BREW COFFEE
LEE'S SUMMIT, MO
1410 NE DOUGLAS STREET
LEE'S SUMMIT, MO 64086



ENGINEER OF RECORD:
NAME: RYAN JONES
LICENSE NO. PE-2004017193

PROJECT NUMBER:
213347B5M

REVISION:
ADDENDUM #1 - 06.17.2022
ADDENDUM #4 - 09.15.2022

E1.2
SCHEDULES AND
DETAILS
DATE: APRIL 26, 2022

OCCUPANCY SENSOR SCHEDULE

MARK	CONTROL TYPE	LOAD			SENSOR						
		EQUIPMENT SERVED	VOLTAGE	MANUF	MODEL #	VOLTAGE	TYPE	TIME DELAY	MOUNTING	INTERLOCK	ACCESS
OS1	WALL MOUNTED OCCUPANCY	RESTROOMS	120	WATTSTOPPER	DW-100	120	IR/US	AUTO	WALL BOX	-	1
NOTES/ACCESSORIES:							ABBREVIATIONS:				
1. WALL SWITCH SHALL BE CAPABLE OF MANUAL ON-OFF CONTROL.							PIR - PASSIVE INFRARED				
							US - ULTRASONIC				
							IR/US - DUAL TECHNOLOGY				
GENERAL NOTES (APPLIES TO ALL SENSORS):							APPROVED MANUFACTURERS:				
1. EACH SENSOR TYPE MAY BE SHOWN IN MULTIPLE LOCATIONS ON ELECTRICAL PLANS							GREENGATE/NOVITAS				
2. EQUIPMENT SUBMITTAL: PRIOR TO APPROVAL, WITH OCCUPANCY SENSOR SPECIFICATION INFORMATION, CONTRACTOR SHALL SUBMIT PLAN (PROVIDED BY MANUFACTURER'S REPRESENTATIVE) WITH OCCUPANCY SENSOR LOCATIONS, OCCUPANCY SENSOR TYPE, MOUNTING HEIGHT AND SENSOR COVERAGE FOR EACH SPACE.							WATTSTOPPER				
3. WHERE SWITCHING IS SHOWN, WIRE OCCUPANCY SENSOR CONTROL IN SERIES WITH LOCAL SWITCHES							HUBBELL				
4. PROVIDE CONDUIT UNITS/POWER PACKS AS REQUIRED.											
5. FINISH/COLOR SHALL MATCH ALL OTHER DEVICES.											

DISCONNECT SWITCH SCHEDULE

MARK	EQUIPMENT SERVED	SWITCH		OVERCURRENT PROTECTION		NEMA ENCLOSURE	NOTES & ACCESSORIES
		VOLTAGE	DUTY	AMP	POLE		
DS1	CONDENSING UNIT CU1	240	GD	60	2	-	3R 1
DS2	CONDENSING UNIT CU2	240	GD	60	2	-	3R 1
DS3	REMOTE CONDENSING UNIT	240	GD	60	2	-	3R 1
DS4	WATER HEATER WH1	240	GD	60	2	-	1 1
DS5	WATER HEATER WH1	240	GD	60	2	-	1 1

ACCESSORIES:

- GROUND LUG KIT
- SOLID NEUTRAL
- SERVICE ENTRANCE RATED

ABBREVIATIONS:

CB - CIRCUIT BREAKER
GD - GENERAL DUTY
HD - HEAVY DUTY

LIGHTING FIXTURE SCHEDULE

MARK	MANUFACTURER	MODEL #	FINISH	MOUNTING	LAMPS		FIXTURE WATTS	VOLTAGE	APPROVED MANUFACTURERS	NOTES
					TYPE	CODE	QTY			
T1	WILLIAMS	LP-24-150/835-DIM-UNV	WHITE	RECESSED	LED	WITH FIXTURE	-	50	UNV	SUBMIT
T1E	WILLIAMS	LP-24-150/835-EM/10WRM-DIM-UNV	WHITE	RECESSED	LED	WITH FIXTURE	-	50	UNV	SUBMIT
C1	HALO	SMD6R65SWH	WHITE	SURFACE	LED	WITH FIXTURE	-	10	UNV	SUBMIT 1,2,3,4,6
S1	LED NEONFLX	LN-11X29-24-RGB	WHITE	SURFACE	LED	WITH FIXTURE	-	1.88/FT	UNV	SUBMIT 1,2,6
S2	WILLIAMS	78-4-153/830-DIM-UNV	WHITE	SURFACE	LED	WITH FIXTURE	-	35	UNV	SUBMIT
PL1	LUMARK	PRV-C25-D-UNV-T3-5A-B2-HSS	BRONZE	POLE	LED	WITH FIXTURE	-	96	UNV	SUBMIT 1,4,6,7,8,9
W1E	WILLIAMS	VWP-H-130/740-T3-DB2-SDGL-EM/4W-PC-DIM-UNV	BRONZE	SURFACE	LED	WITH FIXTURE	-	36	UNV	SUBMIT 1,3,6
X1	WILLIAMS	EXT/EM/LED-R-WHT	WHITE	SURFACE	LED	WITH FIXTURE	-	10	120	SUBMIT 3

- NOTES:**
- FIXTURE SHALL BE LISTED FOR OUTDOOR USE AND SHALL BE LISTED FOR DAMP OR WET LOCATION AS REQUIRED.
 - COORDINATE WITH ARCHITECT FOR EXACT INDUSTRY HEIGHT AND LOCATION.
 - PROVIDE FIXTURE WITH EMERGENCY BATTERY BACK-UP FOR MINIMUM 90 MINUTES OPERATION.
 - COORDINATE WITH ARCHITECT FOR EXACT FINISH.
 - REFER TO PLANS AND COORDINATE WITH OWNER/ARCHITECT FOR MOUNTING TYPE, FACE ORIENTATION, AND CHUION DIRECTION AS APPLICABLE.
 - FIXTURE LAMP AND BALLAST SHALL BE CAPABLE OF OPERATING DOWN TO 0 DEGREES + AND UP TO 110 DEGREES AS REQUIRED.
 - PROVIDE BY STAINLESS STEEL POLE AND ACCESSORIES AS REQUIRED FOR COMPLETE INSTALLATION.
 - PROVIDE ALL ACCESSORIES AS REQUIRED FOR COMPLETE INSTALLATION. POLE AND ACCESSORIES SHALL BE SAME COLOR AS FIXTURE HEAD.
 - PROVIDE FIXTURE WITH LUMARK NEMA PHOTO CONTROL DAUR104
- ABBREVIATIONS:**
- DS22 - DOWNFIRE DOWNFIRE, CONTRACTOR INSTALLED
TBD - TO BE DETERMINED
- GENERAL NOTES (APPLY TO ALL LIGHT FIXTURES):**
- PROVIDE INSULATION BARRIER, WHERE NON-K-RATED LIGHT FIXTURES ARE INSTALLED WHERE THEY MAY BE IN DIRECT CONTACT WITH INSULATION. INSULATION BARRIER SHALL BE EQUAL TO PRODUCTS BY E.Z. BARRIER

PANELBOARD SCHEDULE

VOLTAGE: 120/240		POLES: 42		MOUNTING: 42		SURFACE EXTERIOR		ENCLOSURE: NEMA 3R	
PHASE / WIRE: 1/3		KAIC AMPS (RMS): 400		LOCATION: FED FROM: 22K MLO		UTILITY XFMR		MANUFACTURER: SQUARE D	
AMPS: 400		MAIN BREAKER / MLO: 400 MCB		PHASE LOADS (VA)		LOAD (VA)		MODEL: NQ	
CIRC. NO.	EQUIPMENT SERVED	CB AMPS	CB POLES	CB ACC.	LOAD (VA)	CB AMPS	CB POLES	EQUIPMENT SERVED	CIRC. NO.
1	POINT OF SALE RECEPTACLES	20	1	-	400	1050	B	GRINDER	2
2	FRONT BAR RECEPTACLE	20	1	-	180	830	B	GRINDER	4
5	EXTERIOR RECEPTACLES	20	1	-	1260	1440	B	FRONT BAR RECEPTACLE	6
7	ESPRESSO MACHINE 4 GROUP	50	2	-	4000	5800	1800	HOT WATER RECEPTACLE	8
9					4000	5284	1284	ICE MAKER	10
11	HORTON SLIDING DOOR	20	1	-	500	4334	1284	EXTERIOR RECEPTACLES	12
13	ESPRESSO MACHINE 3 GROUP	50	2	-	3050	4334	1284	BLENDER	14
15					3050	4334	1284	ICE MAKER	16
17	SECURITY RECEPTACLES	20	1	-	360	3410	3050	ESPRESSO MACHINE 3 GROUP	18
19	SECURITY RECEPTACLES	20	1	-	360	3410	3050		20
21	SIDE BAR RECEPTACLE	20	1	-	180	360	180	SERVICE AREA RECEPTACLE	22
23	SIDE BAR RECEPTACLE	20	1	-	180	360	180	SERVICE AREA RECEPTACLE	24
25	SIDE BAR RECEPTACLE	20	1	-	180	1464	1284	BLENDER	26
27	ICE MAKER	20	1	-	1284	1554	270	EXTERIOR LIGHTS	28
29	INTERIOR LIGHTS	20	1	-	700	1984	1284	BLENDER	30
31	SIDE BAR RECEPTACLE	20	1	-	180	540	360	EXTERIOR RECEPTACLES	32
33	BLENDIT	20	1	-	1284	1644	360	BATHROOM RECEPTACLE	34
35	CRAWL SPACE RECEPTACLE	20	1	-	180	790	HACR	WALK IN COOLER	36
37	EXTERIOR LED LIGHTS	20	1	-	500	1290			38
39	SPARE	20	1	-		1500	1500	BUILDING SIGNAGE	40
41	SPARE	20	1	-		0		SPARE	42

ENCLOSURE ACCESSORIES: CH, FL

PANELBOARD ACCESSORIES: GB, CBB, FTL

CIRCUIT BREAKER ACCESSORIES:

AC - AUXILIARY CONTACTS
BO - ELECTRICAL OPERATOR
GFCI - GROUND-FAULT INTERRUPTING
HACR - HACR RATING
HLF - HANDLE LOCK-OFF
HLS - HANDLE LOCK-ON
SR - SWITCH RATING
ST - SHUNT TRIP

ENCLOSURE ACCESSORIES:

CH - CONVEYAL HINGE
CW - COLUMN WIDTH PANEL
DWO - HINGED DOOR WITH HINGED DOOR
HACR - HACR RATING
ESB - EXTENDED GUTTER BOTTOM
EGL - EXTENDED GUTTER LEFT HAND SIDE
EGR - EXTENDED GUTTER RIGHT HAND SIDE
FL - FLUSH LOCKS

PANELBOARD ACCESSORIES:

CL - COMPRESSION LUGS
FTL - FEED-THRU LUGS
GB - EQUIPMENT GROUND BAR KIT
HACR - REGULATED GROUND BAR KIT
NBR - NEUTRAL BONDING KIT
PS - PREPARED CIRCUIT BREAKER SPACE
SR - SPLIT BUS
SER - SERVICE ENTRANCE RATING

PANELBOARD ACCESSORIES:

SFB - SUB-FEED CIRCUIT BREAKER
SFL - SUB-FEED LUGS
GB - SUB-PLATED COPPER BUS BARS
ABB - SUB-PLATED ALUMINUM BUS BARS
TRN - 200% RATED NEUTRAL BUS BAR
TVSS - TRANSIENT VOLTAGE SURGE SUPPRESSION

PANELBOARD SCHEDULE

VOLTAGE: 120/240		POLES: 42		MOUNTING: 42		SURFACE EXTERIOR		ENCLOSURE: NEMA 3R	
PHASE / WIRE: 1/3		KAIC AMPS (RMS): 400		LOCATION: FED FROM: 22K MLO		UTILITY XFMR		MANUFACTURER: SQUARE D	
AMPS: 400		MAIN BREAKER / MLO: 400 MCB		PHASE LOADS (VA)		LOAD (VA)		MODEL: NQ	
CIRC. NO.	EQUIPMENT SERVED	CB AMPS	CB POLES	CB ACC.	LOAD (VA)	CB AMPS	CB POLES	EQUIPMENT SERVED	CIRC. NO.
43	CONDENSING UNIT CU1	50	2	HACR	3078	3218	3278	COOLER LIGHT	44
45					3078	3218	3278	ICE MACHINE	46
47	CONDENSING UNIT CU2	50	2	HACR	3078	6918	3840	REMOTE CONDENSING UNIT	48
49					3078	6918	3840		50
51	MECHANICAL ACCESS RECEPTACLE	20	1	-	360	720	360	IPAD RECEPTACLES	52
53	ELECTRIC HEATER EH1	20	2	-	1500	11484	9984	AIR HANDLER AH1	54
55					1500	9984			56
57	ELECTRIC HEATER EH2	20	2	-	1500	11484	9984	AIR HANDLER AH2	58
59					1500	11484	9984		60
61	AIR CURTAIN AC1	15	1	HACR	768	1128	360	IPAD RECEPTACLES	62
63	AIR CURTAIN AC2	15	1	HACR	768	1068	300	SITE LIGHTING	64
65	AIR CURTAIN AC3	15	1	HACR	768	2118	1350	CHILLER	66
67	WATER HEATER WH1	40	2	-	4000	5350	1350		68
69					4000	5350	1350	CHILLER	70
71	WATER HEATER WH1	40	2	-	4000	5350	1350		72
73					4000	5350	1350	SPARE	74
75	SPARE	20	1	-		0	0	SPARE	76
77	SPARE	20	1	-		0	0	SPARE	78
79	SPARE	20	1	-		0	0	SPARE	80
81	SPARE	20	1	-		0	0	SPARE	82
83	SPARE	20	1	-		0	0	SPARE	84

ENCLOSURE ACCESSORIES: CH, FL

PANELBOARD ACCESSORIES: GB, CBB

CIRCUIT BREAKER ACCESSORIES:

AC - AUXILIARY CONTACTS
BO - ELECTRICAL OPERATOR
GFCI - GROUND-FAULT INTERRUPTING
HACR - HACR RATING
HLF - HANDLE LOCK-OFF
HLS - HANDLE LOCK-ON
SR - SWITCH RATING
ST - SHUNT TRIP

ENCLOSURE ACCESSORIES:

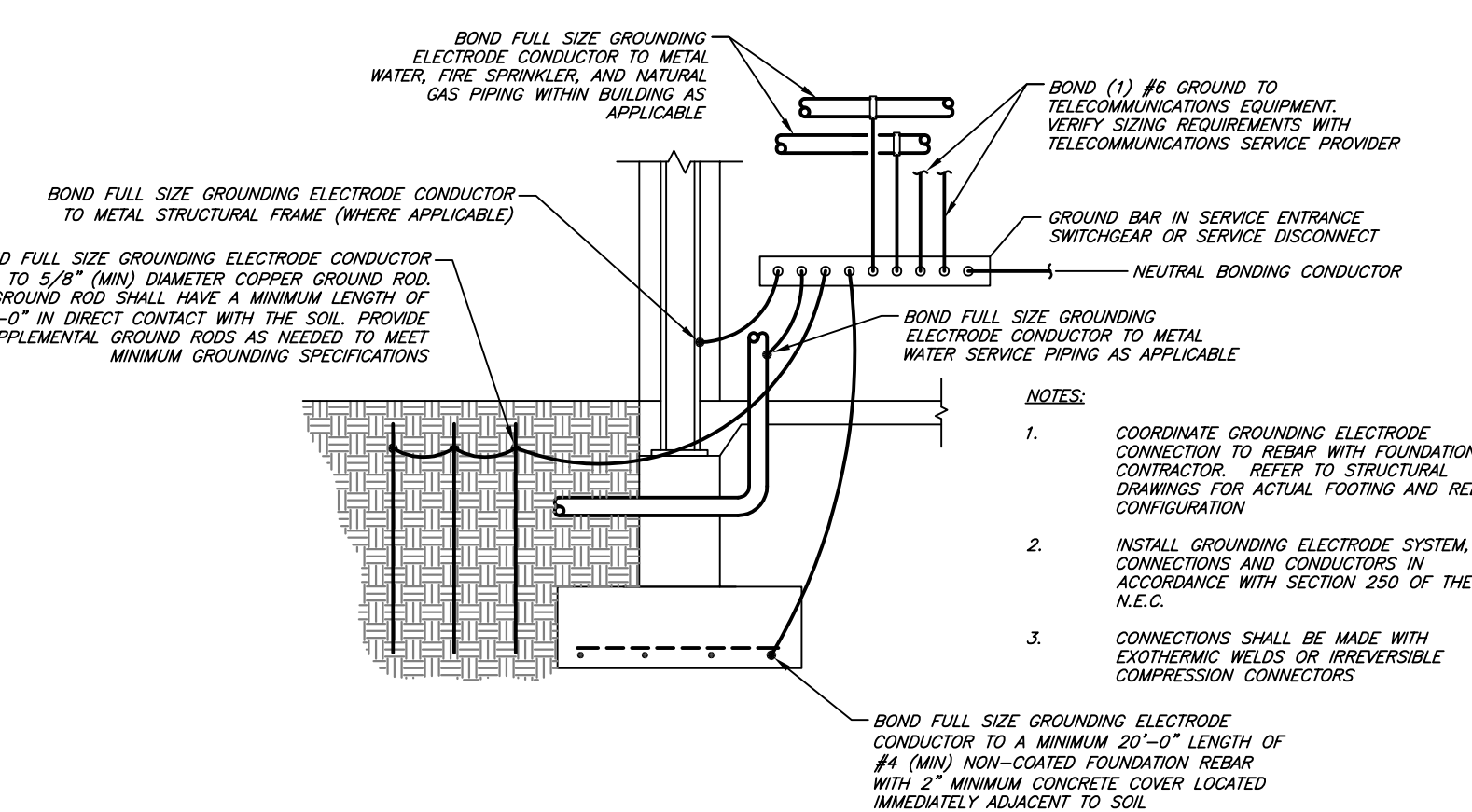
CH - CONVEYAL HINGE
CW - COLUMN WIDTH PANEL
DWO - HINGED DOOR WITH HINGED DOOR
HACR - HACR RATING
ESB - EXTENDED GUTTER BOTTOM
EGL - EXTENDED GUTTER LEFT HAND SIDE
EGR - EXTENDED GUTTER RIGHT HAND SIDE
FL - FLUSH LOCKS

PANELBOARD ACCESSORIES:

CL - COMPRESSION LUGS
FTL - FEED-THRU LUGS
GB - EQUIPMENT GROUND BAR KIT
HACR - REGULATED GROUND BAR KIT
NBR - NEUTRAL BONDING KIT
PS - PREPARED CIRCUIT BREAKER SPACE
SR - SPLIT BUS
SER - SERVICE ENTRANCE RATING

PANELBOARD ACCESSORIES:

SFB - SUB-FEED CIRCUIT BREAKER
SFL - SUB-FEED LUGS
GB - SUB-PLATED COPPER BUS BARS
ABB - SUB-PLATED ALUMINUM BUS BARS
TRN - 200% RATED NEUTRAL BUS BAR
TVSS - TRANSIENT VOLTAGE SURGE SUPPRESSION



GROUNDING ELECTRODE DETAIL

NO SCALE

SPECIAL NOTES:

- CONTRACTOR SHALL COORDINATE AND VERIFY ALL ELECTRIC SERVICE RESPONSIBILITIES WITH ELECTRIC UTILITY COMPANY.
- PROVIDE EXCAVATION, TRENCHING AND BACKFILL ON PRIMARY, AS REQUIRED BY UTILITY COMPANY.
- ELECTRICAL CONTRACTOR SHALL COORDINATE WITH UTILITY COMPANY FOR ALL RESPONSIBILITIES ON PRIMARY, FOR METERING, JUNCTION ENCLOSURES AND TRANSFORMER.

AVAILABLE FAULT CURRENT NOTE:

THE FOLLOWING ASSUMPTIONS WERE MADE TO CALCULATE THE AVAILABLE FAULT CURRENT: 167KVA TRANSFORMER, 138 VOLTAGE, AND 80 FEET OF SECONDARY CONDUCTOR TO WIREWAY. CONTRACTOR SHALL CONTACT ENGINEER IF ANY MODIFICATIONS ARE MADE TO CONSTRUCTION-DOCUMENT SPECIFIED CONDUCTOR TYPE, CONDUCTOR QUANTITY AND/OR TRANSFORMER LOCATION/INFORMATION. IF NO MODIFICATIONS HAVE BEEN MADE AFTER LISTED CALCULATION DATE, CONTRACTOR SHALL PROVIDE A PERMANENT PLACARD AT SERVICE DISCONNECTING MEANS, OR SWITCHBOARD MAIN CIRCUIT BREAKER. PLACARD SHALL MEET REQUIREMENTS OF AUTHORITY HAVING JURISDICTION. PLACARD SHALL READ: "MAXIMUM AVAILABLE FAULT CURRENT: 14,813 AMPS, CALCULATED ON SEPTEMBER 15, 2022"

UNDERGROUND PRIMARY ELECTRIC PER UTILITY COMPANY DRAWINGS. COORD