

JAZZERCISE LSMO

618 SW 3RD STREET, SUITE E
LEE'S SUMMIT, MO 64063

PERMIT DOCUMENTS

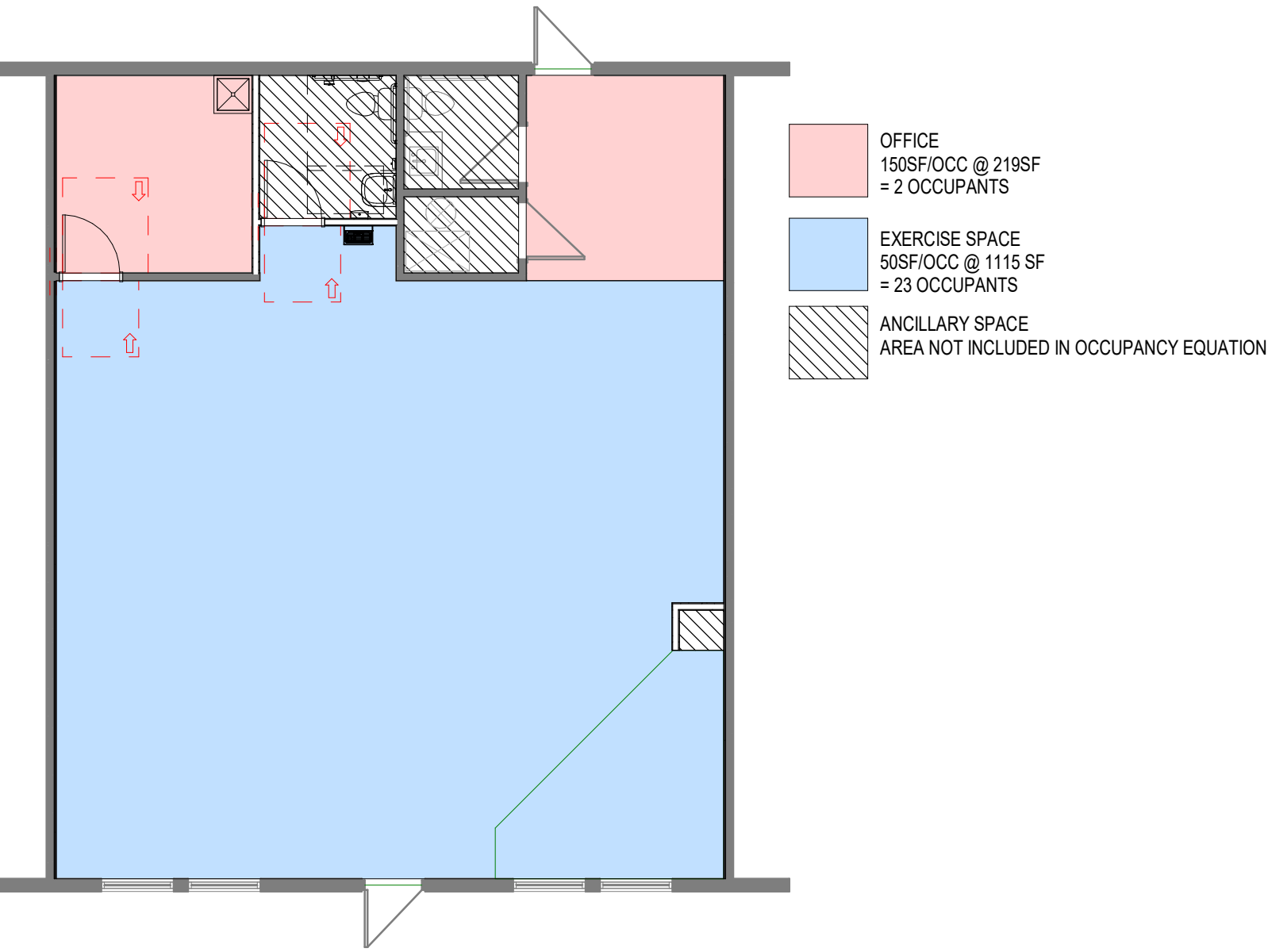
01/13/2023

COLLINS WEBB #: 23010

GENERAL DESCRIPTION		
PROJECT NAME: JAZZERCISE LSMO PROJECT LOCATION: LEE'S SUMMIT, MISSOURI COUNTY: JACKSON COLLINS WEBB ARCHITECTURE 307B SW MARKET STREET LEE'S SUMMIT, MISSOURI 64063 APPLICABLE CODES: INTERNATIONAL BUILDING CODE - 2018 ED. INTERNATIONAL PLUMBING CODE - 2018 ED. INTERNATIONAL MECHANICAL CODE - 2018 ED. INTERNATIONAL FUEL GAS CODE - 2018 ED. INTERNATIONAL FIRE CODE - 2018 ED. NATIONAL ELECTRICAL CODE - 2017 ED. ACCESSIBLE AND USABLE BUILDINGS AND FACILITIES - ICC/ANSI A117.1-2009		
CODE INFORMATION	TABLE/SECTION/REFERENCE	
BUILDING/PROJECT USE: CONSTRUCTION TYPE OCCUPANCY CLASSIFICATION ACTUAL TENANT AREA (GROSS)	JAZZERCISE STUDIO TYPE VB (EXISTING) NONSPRINKLED GROUP "B" BUSINESS LESS THAN 50 OCC. 1,488 SQ. FT.	IBC SECTION 304.1 IBC TABLE 601 IBC SECTION 304.1
FIRE RESISTIVE REQUIREMENTS	TABLE/SECTION/REFERENCE	
PRIMARY FRAME NON-BEARING WALLS BEARING WALLS INT / EXT. FLOOR CONSTRUCTION CEILING/ROOF CORRIDORS	0 HRS 0 HRS 0 INT. / 0 EXT. HRS 0 HRS 0 HRS 1 HRS	IBC TABLE 601 IBC TABLE 601 IBC TABLE 601 IBC TABLE 601 IBC TABLE 601 IBC TABLE 1020.1
FIRE EXTINGUISHERS		
1. PROVIDE PORTABLE FIRE EXTINGUISHERS IN OCCUPANCIES AND LOCATIONS AS REQUIRED BY THE INTERNATIONAL FIRE CODE AND IBC SECTION 906.1. SEE PLANS FOR SUGGESTED LOCATIONS. NOTIFY ARCHITECT OF ANY PROPOSED RELOCATION OR IF A CONFLICT IS ENCOUNTERED. 2. PORTABLE FIRE EXTINGUISHERS SHALL BE INSTALLED, INSPECTED, AND MAINTAINED IN ACCORDANCE WITH NFPA 10, STANDARD FOR PORTABLE FIRE EXTINGUISHERS.		
CEILING HEIGHT NOTES: (IBC 1003 & 1208)		
1. ALL MEANS OF EGRESS TO HAVE A MINIMUM CEILING HEIGHT OF 7'-4" A.F.F., NOR SHALL HAVE ANY PROJECTION FROM THE CEILING BE LESS THAN 6'-8" A.F.F. 2. OCCUPIED SPACES, HABITABLE SPACES AND CORRIDORS SHALL HAVE A CEILING HEIGHT OF NOT LESS THAN 7'-4" A.F.F. 3. BATHROOMS, TOILET ROOMS, AND STORAGE ROOMS SHALL HAVE A CEILING HEIGHT OF NOT LESS THAN 7'-0" A.F.F.		
INTERIOR FINISHES		
GROUP B	MAX. FLAME SPREAD	TABLE/SECTION/REFERENCE
EXIT ENCLOSURES	CLASS B	IBC TABLE 803.13
LOBBIES & CORRIDORS	CLASS C	IBC TABLE 803.13
ALL OTHER SPACES	CLASS C	IBC TABLE 803.13
TEXTILES	CLASS C (76-200)	IBC 803.1.1, 803.5.1, 803.5.2
SMOKE DEVELOPED	0-450	IBC 803.1.1
NOTE: Decorative Materials and Trim (including plastics) must comply with IBC SECTION 906		

GENERAL EXITING REQUIREMENTS		TABLE/SECTION/REFERENCE
EXIT TRAVEL DISTANCE DEAD END CORRIDOR COMMON PATH OF TRAVEL MIN. CORRIDOR WIDTH	250 FEET 50 FEET 75 FEET OR 100' IF OCC. < 30 44", OR 36" IF OCC. < 50	IBC TABLE 1017.2 IBC SECTION 1020.4 IBC TABLE 1006.2.1 IBC TABLE 1020.2
EXIT REQUIREMENTS		TABLE/SECTION/REFERENCE
A. REQUIRED CAPACITY 1. OTHER COMPONENTS - 0.2" / PERSON		IBC SECTION 1005.3.2
B. MINIMUM NUMBER 1. OCCUPANT LOAD OF 1-500 PERSONS - 2 EXITS PER STORY* *1 EXIT ALLOWED IF OCCUPANCY < 49		IBC TABLE 1006.3.2 IBC TABLE 1006.3.3(2)
OCCUPANT LOAD		TABLE/SECTION/REFERENCE
EXERCISE AREA - 1015 SF OFFICE AREA - 219 SF OCCUPANT LOAD THIS LEVEL	23 OCC 2 OCC 25 OCCUPANTS	IBC TABLE 1004.5 IBC TABLE 1004.5 IBC TABLE 1006.3.2 & TABLE 1006.3.3(2)
EXITS REQUIRED THIS LEVEL EXITS PROVIDED THIS LEVEL		1 EXIT 2 EXITS
PLUMBING FIXTURE REQUIREMENTS		IBC TABLE 2902.1
B OCC WATER CLOSETS B OCC LAVATORIES B OCC DRINKING FOUNTAIN B OCC SERVICE SINK		= 1 PER 25 FOR THE FIRST 50; 1 PER 50 FOR EXCEEDING 50 OCCUPANTS = 1 PER 40 FOR THE FIRST 80; 1 PER 80 FOR EXCEEDING 80 OCCUPANTS = 1/100 = 1
PLUMBING FIXTURES REQUIRED WATER CLOSETS: LAVATORIES: DRINKING FOUNTAINS: SERVICE SINKS:		20/25 = 1 REQUIRED 25/40 = 1 REQUIRED 25/100 = 1 REQUIRED = 1 REQUIRED
PLUMBING FIXTURES PROVIDED WATER CLOSETS: LAVATORIES: DRINKING FOUNTAINS: SERVICE SINKS:		= 2 PROVIDED = 2 PROVIDED = 1 PROVIDED = 1 PROVIDED

GENERAL	
SHEET NUMBER	SHEET NAME
CS	COVER SHEET
G001	GENERAL INFORMATION
G002	ACCESSIBILITY GUIDELINES
ARCHITECTURAL	
SHEET NO.	SHEET NAME
A101	1ST FLOOR PLAN, FINISHES & SCHEDULES
MEP	
SHEET NUMBER	SHEET NAME
M101	MECHANICAL PLANS, SPECS & SCHEDULES
P101	PLUMBING PLANS, SPECS & SCHEDULES
E001	ELECTRICAL PLANS
E101	ELECTRICAL PLANS



OWNER

LSJZ, LLC DBA LEE'S SUMMIT JAZZERCISE
2909 SW MUIR DRIVE
LEE'S SUMMIT, MO 64081
P: 816.679.4954

ARCHITECT

COLLINS | WEBB ARCHITECTURE
307B SW MARKET STREET
LEE'S SUMMIT, MISSOURI 64063
P: 816.249.2270
www.collinsandwebb.com

CONTRACTOR

CAMM CONSTRUCTION, INC
344 NE CAPITAL DRIVE
LEE'S SUMMIT, MO 64086
P: 816.918.5548
www.cammconstructioninc.com

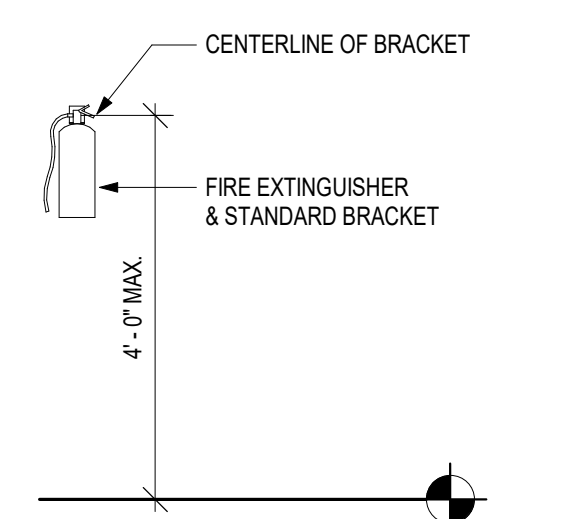
MEP ENGINEER

JSC ENGINEERS
1925 CENTRAL ST.
KANSAS CITY, MO 64108
P: 816.272.5289
www.jscengineers.com

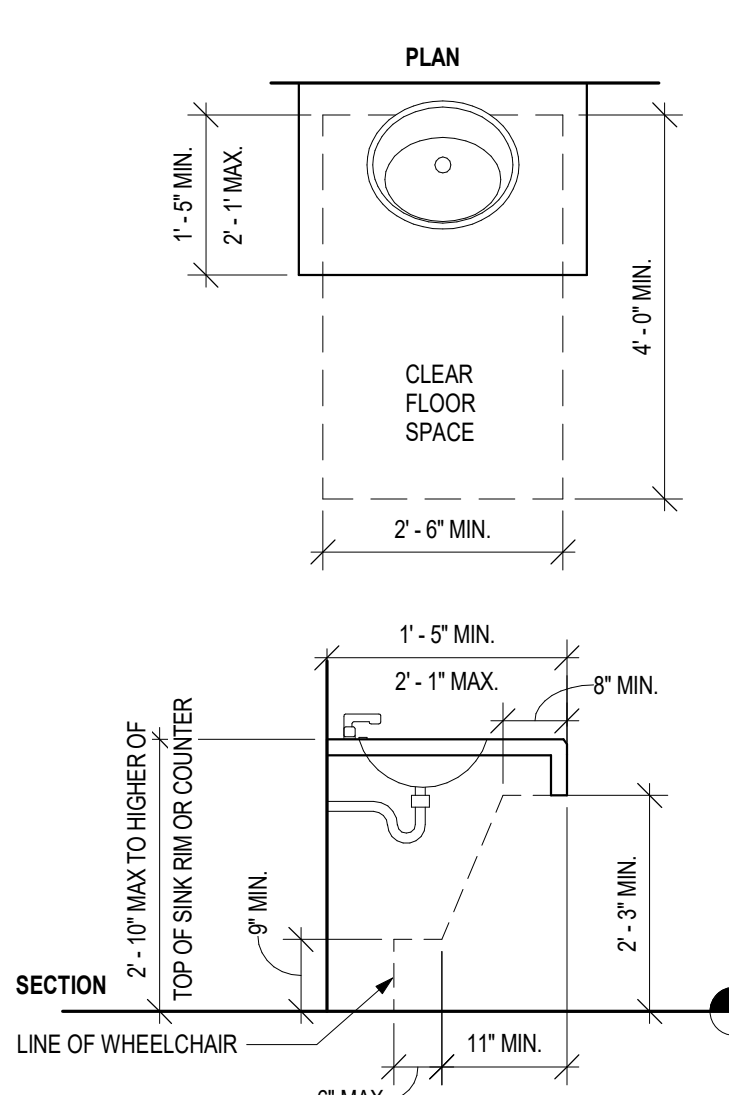
GENERAL NOTES: ACCESSIBILITY GUIDELINES

- NOTE: ALL DIMENSIONS ARE MEASURED FROM FLOOR, UNLESS NOTED OR SHOWN OTHERWISE.
- ADA UNOBSTRUCTED REACH RANGES: ADA FORWARD REACH = 48" MAX. & 15" MIN. ADA SIDE REACH = 48" MAX. & 15" MIN.
- ELEVATORS: STANDARD CALL BUTTONS: 35" TO 48" TO C.L. & PROTRUDE 1" MAX. ADA CALL BUTTONS: 42" TO C.L. (TYP.) & 48" MAX. (BY SMALLEST DIM.) ADA VISIBLE SIGNALS: 72" MIN. TO C.L. (2 1/2" SMALLEST DIM.) TACTILE SIGNAL ON HOSTWAY: 60" TO BASE OF CHARACTERS W/ TACTILE STAR & 2" HIGH CHARACTERS.
- DOOR HARDWARE (TO CENTER OF HARDWARE): STANDARD MOUNTING HEIGHTS: PUSH PLATES = 42". PULL HANDLES = 42". KNOBS/LEVERS = 40". PANIC EXIT = 42". CENTERLINE OF BAR, KICKPLATES: WIDTH = DOOR WIDTH MINUS 2". CENTER HEIGHT = 16" FROM B.O. DOOR. THRESHOLDS: STANDARD = 12" MAX. AT EXT. SLIDING DOORS = 34" MAX. ADA HARDWARE = 34" MIN. TO 48" MAX.
- DRINKING FOUNTAINS & EWCS (TO SPOUT): STANDARD = 40" TYP. 42" MAX. ADA = 38" MAX. (27" MIN. CLEAR KNEE SPACE).
- WATER CLOSETS (TO TOP OF SEAT): STANDARD = 14" TO 15". ADA (TO TOP OF SEAT) = 17" TO 19". ADA FLUSH CONTROLS = 44" MAX.
- WATER CLOSETS (TO SINK RM COUNTERTOP): STANDARD = 36" TO 34" MAX.
- WATER CLOSETS (TO TOP OF SEAT): STANDARD = 14" TO 15". ADA (TO TOP OF SEAT) = 17" TO 19". ADA FLUSH CONTROLS = 44" MAX.
- URINALS (TO RIM): STANDARD = 24" MAX. ADA = 17" MAX. ADA FLUSH CONTROLS = 44" MAX.
- GRAB BARS: ADA (TO TOP OF BAR): WATER CLOSETS = 33" MIN. TO 36" MAX. SHOWERS = 33" MIN. TO 36" MAX. (FROM B.O. SHOWER). BATHTUBS: TOP BAR = 33" MIN. TO 36" MAX. BOTTOM BAR = 7" ABOVE TO TUB.
- SHOWER HEADS (FROM FLOOR TO HEAD): STANDARD = 72" TO 84" ADA: SPRAY UNIT W/ HOSE 60" LONG MIN. ADA = FIXED SHOWER HEAD = 48" AFF.
- SHOWER CONTROLS (TO CONTROL AREA): STANDARD = 48" MAX. (TO TOP). ADA = 38" MIN. TO 48" MAX.
- SHOWER ROD (FROM FLOOR TO C.L.): STANDARD = 78" MAX. TOILET ROOM PARTITIONS: TOILETS = 12" TO 60" & 70" TO TOP. URINALS = 18" TO 60" & 80" TO TOP.
- TOILET PAPER DISPENSERS (TO C.L. OF OUTLET): STANDARD = 24". ADA = 19" MIN. TO 24" MAX.
- WALL MOUNTED SOAP DISPENSERS (TO C.L. OF PUSH BUTTON): STANDARD = 40". ADA = VARIES RE. OBSTRUCTED AND UNOBSTRUCTED REACH RANGES. ADA SIDE REACH = 48" MAX. ABOVE SINK IN COUNTER.
- PAPER TOWEL DISPENSER/WASTE RECEPTACLE (TO TOWEL SLOT): STANDARD = 40" MAX. ADA FORWARD REACH = 48" MAX. & 15" MIN. ADA SIDE REACH = 48" MAX. & 15" MIN.
- WARM AIR HAND DRYER (TO PUSH SWITCH): STANDARD = 44" MAX. ADA FORWARD REACH = 48" MAX. & 15" MIN. ADA SIDE REACH = 48" MAX. & 15" MIN.
- SANITARY NAPKIN DISPENSER (TO C.L. OF COIN SLOT): STANDARD = 40" MAX. ADA FORWARD REACH = 48" MAX. & 15" MIN. ADA SIDE REACH = 48" MAX. & 15" MIN.
- SANITARY NAPKIN DISPOSAL (TO TOP OF UNIT): STANDARD = 28" MAX. ADA = 19" MIN. TO 24" MAX. (TO OPNG.).
- TOILET SEAT COVER DISPENSERS (TO OPNG.): STANDARD = 40" MAX. ADA FORWARD REACH = 48" MAX. & 15" MIN. ADA SIDE REACH = 48" MAX. & 15" MIN.
- SHelves: ADA = 48" MAX.
- COAT HOOKS: STANDARD = 68" ADA = 48" MAX.
- CHALKBOARDS, TACKBOARDS & MARKERBOARDS: STANDARD = 32" TO 38" (TO B.O. BOARD OR CHALKTRAY). STANDARD = 80" (RECOMMENDED, TO T.O. BOARD).
- THERMOSTATS & CONTROL DEVICES (TO TOP): ADA FORWARD REACH = 48" MAX. ADA SIDE REACH = 48" MAX.
- LIGHT SWITCHES & CARD READERS (TO C.L.): LOCATE 8" FROM DOOR JAMB. ADA = 48" MAX.
- CONVENIENCE RECEPTACLES - ELECTRICAL/TELEPHONE/ DATA (TO C.L.): STANDARD = 18". ADA = 15" MIN.
- EXIT LIGHTS - WALL MOUNTED: 2" MIN. BELOW CEILING. 2" MIN. ABOVE DOOR FRAME. EQUAL SPACE FROM CEILING TO TOP OF FRAME.
- FIRE EXTINGUISHERS (TO TOP, U.N.O.): GROSS WT. 40 LBS. OR LESS = 60" MAX. GROSS WT. MORE THAN 40 LBS. = 42" MAX. ADA = 40" MAX. (B.O. CABINET).
- FIRE ALARM PULL STATIONS (TO LEVER): STANDARD = 48" MAX. ADA FORWARD REACH = 48" MAX. ADA SIDE REACH = 48" MAX.
- SMOKE AND/OR HEAT DETECTORS: STANDARD = CEILING HEIGHT.
- HORN SPEAKER VISUAL SIGNALS: STANDARD = 80" AFF. OR 6' BELOW CEILING - WHICHEVER IS LOWER.
- ROOM SIGNAGE (TO C.L.): STANDARD = 60" HIGH AFF. & WITHIN 18" SLATCH SIDE OF DOOR.

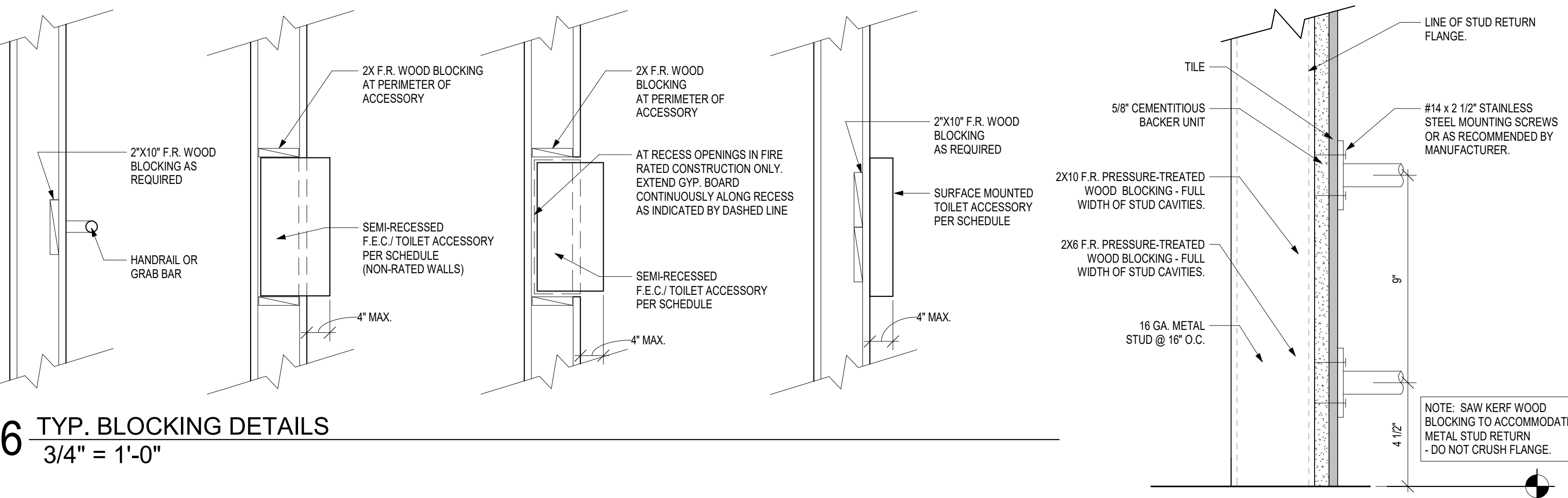
J10 FE CABINET
1/2" = 1'-0"



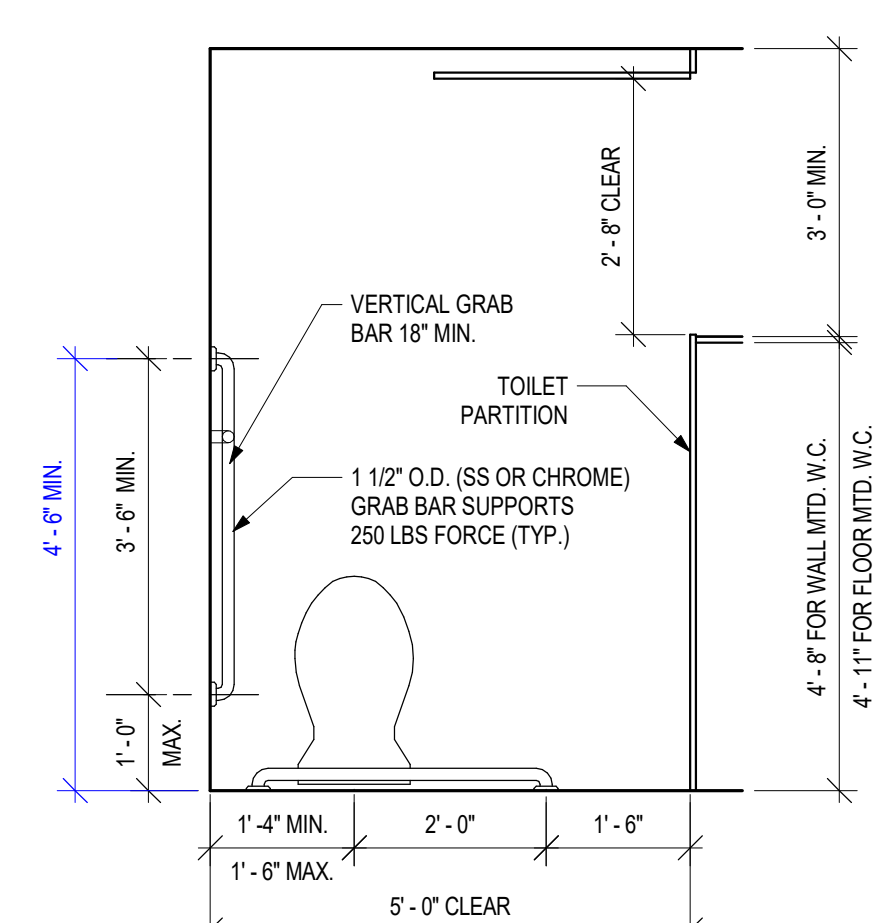
G10 FIRE EXTINGUISHER
1/2" = 1'-0"



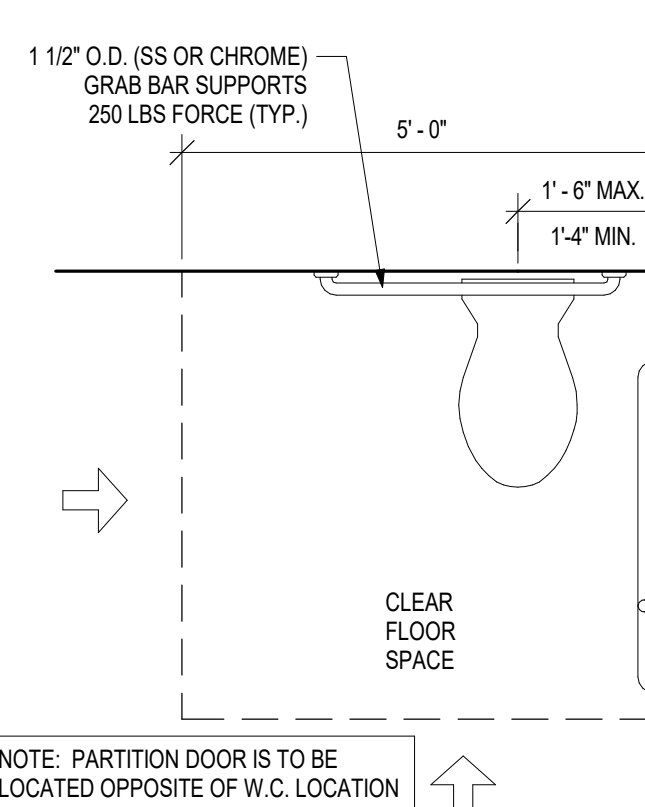
J6 TYP. DOOR APPROACH CLEARANCES
1/2" = 1'-0"



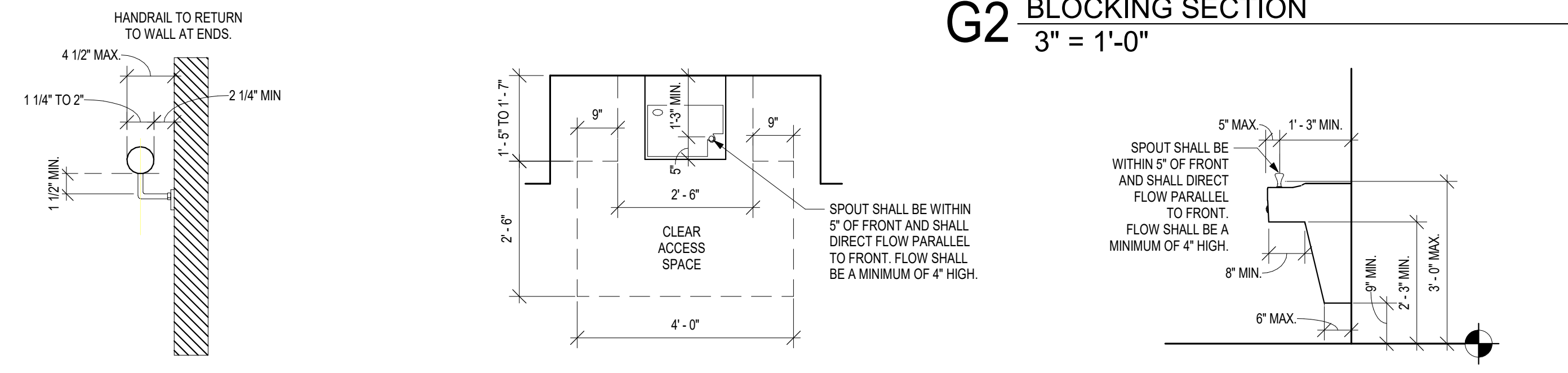
G9 HANDRAIL @ STAIRS AND RAMPS
3/4" = 1'-0"



G6 TYP. BLOCKING DETAILS
3/4" = 1'-0"



G2 BLOCKING SECTION
3" = 1'-0"



E12 SINK IN COUNTER CLEARANCES
1/2" = 1'-0"

E10 ACCESSIBLE TOILET STALL
1/2" = 1'-0"

E8 ACCESSIBLE CLEAR FLOOR SPACE
1/2" = 1'-0"

E6 HANDRAIL CLEARANCES
1 1/2" = 1'-0"

E4 E.W.C. - CLEAR SPACE
1/2" = 1'-0"

E2 E.W.C. - SECTION
1/2" = 1'-0"

MISCELLANEOUS ACCESSORY TYPICAL MOUNTING HEIGHTS

ACCESSORY TYPE	COMMENTS	HEIGHT
FIRE EXTINGUISHER CABINET	SEMI RECESSED	4'-0" MAX.
MANUAL FIRE PULL	SURFACE MOUNTED	4'-0" MAX.
FIRE STROBE/LIGHT/AUDIBLE ALARM	SURFACE MOUNTED	7'-0" MIN.
WALL MOUNTED EXIT SIGN	WALL MOUNTED	6'-6" MIN.
WALL MOUNTED HANDRAIL	SURFACE MOUNTED	3'-0" TO TOP
WALL CLOCK	SURFACE MOUNTED	4'-0" MIN.
FABRIC COVERED TACK BOARD	SURFACE MOUNTED	4'-0" MIN.
MARKER BOARD	SURFACE MOUNTED	4'-0" MIN.
MOP & BROOM HOLDER	SURFACE MOUNTED	6'-0" MIN.
ROBE HOOK	SURFACE MOUNTED	4'-0" MIN.
ELAPSED TIME CLOCK	SURFACE MOUNTED	4'-0" MIN.
SOAP DISPENSER	SURFACE MOUNTED	4'-0" MIN.
PAPER TOWEL DISPENSER	SURFACE MOUNTED	4'-0" MIN.
ALCOHOL DISPENSER	SURFACE MOUNTED	4'-0" MIN.

TOILET ACCESSORY TYPICAL MOUNTING HEIGHTS

ACCESSORY TYPE	COMMENTS	HEIGHT
PAPER TOWEL DISPENSER	SURFACE MOUNTED	4'-0" MIN.
POWER HAND DRYER	SURFACE MOUNTED	4'-0" MIN.
PAPER TOWEL DISPENSER & TRASH RECEPTACLE	SEMI RECESSED	4'-0" MIN.
TOILET TISSUE DISPENSER	SURFACE MOUNTED	4'-0" MIN.
SANITARY NAPKIN DISPOSAL	SURFACE MOUNTED	4'-0" MIN.
SANITARY NAPKIN DISPENSER	RECESSED & SURFACE	4'-0" MIN.
VANITY SOAP DISPENSER	SURFACE MOUNTED	4'-0" MIN.
FRAMED VANITY MIRROR	SURFACE MOUNTED	4'-0" MIN.
DIAPER CHANGING STATION	SURFACE MOUNTED	4'-0" MIN.
SOAP DISPENSER	COUNTERTOP MOUNTED	4'-0" MIN.
FOLDING SHOWER SEAT	SURFACE MOUNTED	4'-0" MIN.
TOILET PARTITION	WALL MOUNTED	4'-0" MIN.
URINAL SCREEN	WALL MOUNTED	4'-0" MIN.

MISCELLANEOUS ACCESSORY TYPICAL MOUNTING HEIGHTS

ACCESSORY TYPE	COMMENTS	HEIGHT
CLOSET HANGAR ROD & SHELF	WALL MOUNTED	4'-0" MIN.
WALL PHONE	SURFACE MOUNTED	4'-0" MIN.
TELEPHONE HOUSING	SURFACE MOUNTED	4'-0" MIN.
CUL DISPENSER	SURFACE MOUNTED	4'-0" MIN.
WALL SWITCH	SURFACE MOUNTED	4'-0" MIN.
TELEPHONE OUTLET	SURFACE MOUNTED	4'-0" MIN.
RECEPTACLE/TELEPHONE/ DATA	SURFACE MOUNTED	4'-0" MIN.
SPECIALTY EQUIP (IE. THERMOSTAT CARD READER, INTERCOM)	SURFACE MOUNTED	4'-0" MIN.
ELEVATOR CALL BUTTON	SURFACE MOUNTED	4'-0" MIN.
ELEVATOR VISIBLE SIGNAL INDICATOR	SURFACE MOUNTED	4'-0" MIN.
TACTILE CHARACTER INDICATOR	SURFACE MOUNTED	4'-0" MIN.
PANIC BAR	SURFACE MOUNTED	4'-0" MIN.
DOOR PULL	SURFACE MOUNTED	4'-0" MIN.
DOOR LATCH	SURFACE MOUNTED	4'-0" MIN.
ADA DOOR OPERATOR	VARIES	4'-0" MIN.

PLUMBING FIXTURE TYPICAL MOUNTING HEIGHTS

ACCESSORY TYPE	COMMENTS	HEIGHT
SHOWER MIXING VALVE	WALL MOUNTED	4'-0" MIN.
SHOWER HEAD	WALL MOUNTED	4'-0" MIN.
HAND HELD SHOWER	WALL MOUNTED	4'-0" MIN.
LAVATORY	WALL MOUNTED	4'-0" MIN.
LAVATORY	COUNTER MOUNTED	4'-0" MIN.
CHILDREN'S DRINKING FOUNTAIN	WALL MOUNTED	4'-0" MIN.
SINGLE DRINKING FOUNTAIN	WALL MOUNTED	4'-0" MIN.
DOUBLE DRINKING FOUNTAIN	WALL MOUNTED	4'-0" MIN.
TOILET	WALL/FLOOR MOUNTED	4'-0" MIN.
URINAL	WALL MOUNTED	4'-0" MIN.

HEALTHCARE ACCESSORY TYPICAL MOUNTING HEIGHTS

ACCESSORY TYPE	COMMENTS	HEIGHT
CLINIC SINK	WALL MOUNTED	4'-0" MIN.
SHARPS CONTAINER	SURFACE MOUNTED	4'-0" MIN.
FILM ILLUMINATOR	SURFACE MOUNTED	4'-0" MIN.
SPECIMEN PASS-THRU	THRU-WALL MOUNTED	4'-0" MIN.
OTOSCOPE	SURFACE MOUNTED	4'-0" MIN.
SPHYGMOMAN-METER	SURFACE MOUNTED	4'-0" MIN.
GLOVE BOX	SURFACE MOUNTED	4'-0" MIN.
MED-GAS SHUT-OFF	SURFACE MOUNTED	4'-0" MIN.
WALL HUNG COMPUTER	SURFACE MOUNTED	4'-0" MIN.

GRAB BAR TYPICAL MOUNTING HEIGHTS & TOILET ACCESSORY PLANS

ACCESSORY TYPE	COMMENTS	HEIGHT
ADA TOILET GRAB BAR	SURFACE MOUNTED	4'-0" MIN.
SHOWER STALL GRAB BAR	SURFACE MOUNTED	4'-0" MIN.
ROLL-IN SHOWER GRAB BAR	SURFACE MOUNTED	4'-0" MIN.
TYPICAL ACCESSORIES AT ACCESSIBLE TOILET	NOTE: SANITARY NAPKIN DISPOSAL AT WOMEN'S & UNISEX ONLY	4'-0" MIN.
TYPICAL ADA SINK ENCLOSURE PANEL CLEARANCE		4'-0" MIN.

A11 TYP. MOUNTING HEIGHTS
1/4" = 1'-0"

GENERAL INFORMATION NOTES:

- CONSTRUCTION TO BE IN STRICT ACCORDANCE WITH ALL APPLICABLE BUILDING CODES, LOCAL RULES AND REGULATIONS, AND ALL OTHER CODES, REGULATIONS AND GOVERNING AGENCIES HAVING JURISDICTION WITH ALL APPLICABLE AMENDMENTS UNLESS ALTERED OR CHANGED THROUGH VARIANCES OF OTHER LEGAL PROCEDURES.
- UNLESS OTHERWISE INDICATED, ALL MATERIALS AND EQUIPMENT ON THE DRAWINGS IS TO BE FURNISHED AND INSTALLED BY THE CONTRACTOR.
- COORDINATE ALL CONSTRUCTION PRIOR TO BEGINNING WORK AND SUBMIT PROPOSED WORK SCHEDULE TO THE OWNER & ARCHITECT FOR APPROVAL.
- CONTRACTOR SHALL COORDINATE THE WORK OF ALL TRADES, SECURE AND PAY FOR ALL PERMITS, FEES, TAXES, INSPECTIONS & TESTING REQUIRED FOR COMPLETE RELATED WORK. THE GENERAL CONTRACTOR SHALL ALSO BE IN CHARGE OF THE OPERATION FROM THE TIME OF COMMENCEMENT UNTIL THE COMPLETION OF WORK AND TO WHOM ALL ORDERS AND DIRECTIONS SHALL BE GIVEN.
- MAINTAIN AND PROTECT EXISTING EXPANSION JOINTS DURING CONSTRUCTION. PATCH/REPAIR/REPLACE TO MATCH EXISTING FINISHES AS REQUIRED ON THE SHELL PORTION OF PROJECT.
- ALL TRADES SHALL BE RESPONSIBLE TO READ ALL DRAWINGS, DETAILS & PLANS ASSOCIATED WITH ALL PACKAGES INCLUDING ARCHITECTURAL, STRUCTURAL, MECHANICAL, ELECTRICAL AND PLUMBING ASSOCIATED WITH THIS PROJECT TO ENSURE PROPER COORDINATION. IF ANY CONFLICTS EXIST, THAT TRADE SHALL NOTIFY THE CONTRACTOR OF THE SAME PRIOR TO CONSTRUCTION WHO SHALL IN TURN NOTIFY THE G.C.
- CONTRACTOR SHALL DIRECT ANY DISCREPANCIES TO THE ARCHITECT PRIOR TO CONSTRUCTION, AND CONTRACTOR SHALL BE RESPONSIBLE FOR ANY WORK WHICH PROCEEDS WITHOUT DUE COURSE AND COORDINATION.
- ALL MATERIALS SHOWN OR CALLED FOR ON THESE CONSTRUCTION DOCUMENTS TO BE NEW AND INSTALLED IN ACCORDANCE WITH MANUFACTURER'S RECOMMENDATIONS AND SPECIFICATIONS.
- THE GENERAL CONTRACTOR SHALL SUPPLY DETAILED COMPARISON OF SUBSTITUTION ITEMS REQUESTED FOR ARCHITECT APPROVAL. COMPARISON INFORMATION SHALL INCLUDE & NOT LIMITED TO SIGNIFICANT PRODUCT QUALITIES WHICH MAY AFFECT VISUAL AND/OR PERFORMANCE OF A PRODUCT INCLUDING WEIGHT, SIZE, DURABILITY, & SPECIFIC FEATURES & REQUIREMENTS OF SUCH PRODUCT.
- ELECTRICAL CONTRACTOR TO PROVIDE ALL SMOKE DETECTORS, EXIT SIGNS, EMERGENCY LIGHT AND FIRE ALARM SYSTEM IN ACCORDANCE WITH ALL APPLICABLE CODES.

GENERAL NOTES: INTERIOR FINISHES

- RE: SHEET G001 FOR ADDITIONAL GENERAL NOTES THAT ARE APPLICABLE.
- RE: G002 FOR ACCESSIBILITY GUIDELINES.
- CONTINUE WALL FINISH AS SCHEDULED BEHIND EQUIPMENT.
- CONTRACTOR SHALL VERIFY ALL DIMENSIONS PRIOR TO CASEWORK FABRICATION AND INSTALLATION.
- ALL BACKSPLASH MATERIAL SHALL MATCH COUNTERTOP MATERIAL.
- TRANSITION ALL WALL FINISHES/COLOR CHANGES AT INSIDE CORNERS, UNLESS NOTED OTHERWISE (U.N.O.)
- TRANSITION WALL BASE AT INSIDE CORNERS, U.N.O.
- INSTALL METAL TRANSITION STRIP WHERE WALL TILE MEETS PAINTED GYP. BD. WALL IN ALL VERTICAL AND/OR HORIZONTAL CONDITIONS U.N.O.
- FINISH MATERIALS TO BE PROCURED FROM OWNER SELECTED / SPECIFIED VENDOR. RE: FINISH LEGEND. ALTERNATES OR SUBSTITUTIONS WILL NOT BE ACCEPTED.
- PROVIDE FULL-HEIGHT FINISH AT WET WALL.
- PROVIDE LEVEL 5 FINISH FOR ALL WALLS TO RECEIVE P1 AND P2.
- P1. PAINT ALL DOOR TRIM TO MATCH WALL BASE (WB1) - SEMI-GLOSS FINISH.
- P2. PAINT ALL DOOR PANELS TO MATCH ADJACENT WALL - EGGSHELL FINISH.

GENERAL NOTES: FLOOR PLANS

- SEE GENERAL ARCHITECTURAL SHEETS FOR ADDITIONAL NOTES AND DETAILS THAT ARE APPLICABLE.
- ARCHITECTURAL ELEVATION 100'-0"
- DIMENSIONS SHOWN ON THE FLOOR PLAN ARE TO THE FACE OF BOARD WALL (FG) UNLESS NOTED OR SHOWN OTHERWISE.
- NOTE: WALL THICKNESSES ARE ACTUAL DIMENSIONS AND PER WALL TYPES. SEE GENERAL SHEET.
- DOOR OPENINGS NOT LOCATED BY DIMENSION SHALL BE CENTERED IN WALL SHOWN OR LOCATED 4 INCHES FROM FINISH WALL TO HINGE SIDE OF THE DOOR, ALWAYS ALLOWING A MINIMUM OF 18" FROM THE PULL SIDE (STRIKE SIDE) OF THE DOOR TO THE INTERSECTING WALL, OR OTHER PROTRUDING OBJECTS.
- RE: FINISH LEGEND AND FINISH SCHEDULE FOR DOOR AND DOOR FRAME FINISHES.
- MAINTAIN AND PROTECT EXISTING EXPANSION JOINTS DURING CONSTRUCTION. PATCH/REPAIR/REPLACE TO MATCH EXISTING FINISHES AS REQUIRED ON THE SHELL PORTION OF PROJECT.
- ALL WOOD PRODUCTS TO BE FIRE-RETARDANT, INCLUDING BLOCKING AND PLYWOOD.

GENERAL NOTES: FLOOR FINISH PLANS

- RE: G-SHEETS - FOR ADDITIONAL GENERAL NOTES THAT ARE APPLICABLE.
- RE: FINISH LEGEND, FINISH SCHEDULE AND FLOOR FINISH PLANS FOR SPECIFIC FLOOR FINISH INFORMATION AND LOCATIONS.
- FLOOR FINISHES SHOWN ARE FOR ACCENT CLARIFICATION ONLY.
- INSTALL TRANSITION STRIPS AT ALL FLOOR FINISH MATERIAL CHANGES, UNLESS NOTED OTHERWISE.
- FLOOR FINISH PATTERN SHALL BE CENTERED IN ROOM, UNLESS NOTED OTHERWISE.
- ALIGN ALL WALL TILE JOINTS WITH FLOOR TILE JOINTS, UNLESS NOTED OR SHOWN OTHERWISE.
- ELECTRICAL CONTRACTOR TO PROVIDE A SPACE IDENTIFICATION NUMBER SHALL HAVE THE SAME FLOOR FINISHES AS ADJACENT SPACES.
- FLOOR FINISH MATERIAL & OR PATTERN SHALL BE INSTALLED UNDER JOE JACKS OF CASEWORK/MILLWORK, UNDER OPEN COUNTERTOPS & UNDER EQUIPMENT.
- FLOOR MATERIAL/COLOR TRANSITIONS TO ALIGN WITH ROOM SIDE OF DOOR STOP, UNLESS NOTED OTHERWISE.

WALL FINISH / WALL PROTECTION PLANS:

- RE: G-SHEETS - FOR ADDITIONAL GENERAL NOTES THAT ARE APPLICABLE.
- RE: FINISH LEGEND & FINISH SCHEDULE FOR SPECIFIC FINISH INFORMATION & LOCATIONS.
- CONTRACTOR SHALL PROVIDE ALL NECESSARY BLOCKING FOR WALL PROTECTION ATTACHMENT. THIS INCLUDES, BUT IS NOT LIMITED TO: HANDRAILS, POSTER CASES, TV MONITORS, BATHROOM ACCESSORIES, FIRE EXTINGUISHERS AND EQUIPMENT. RE: ROUGH CARPENTRY SPECIFICATION SECTION FOR CLARIFICATION.
- CONTRACTOR SHALL PROVIDE MANUFACTURER'S STANDARD ACCESSORY MOLDING OR TRIM FOR WALL PROTECTION ITEMS, UNLESS NOTED OTHERWISE.

WALL TYPE NOTES:

- DRYWALL PARTITIONS SHOULD BE CONSTRUCTED IN ACCORDANCE WITH ASTM E487 - STANDARD PRACTICE FOR INSTALLING SOUND INSULATING GYPSUM BOARD PARTITIONS, AND ASTM C919 - STANDARD PRACTICE FOR USE OF SEALANTS IN ACOUSTICAL APPLICATIONS. ALL SOUND BARRIER PARTITIONS SHOULD EXTEND FROM FLOOR TO STRUCTURE UNLESS STATED OTHERWISE.
- PROVIDE AND INSTALL ALL STIFFENERS, BRACING, BACK-UP PLATES AND SUPPORTING BRACKETS REQUIRED FOR THE INSTALLATION OF ALL CASEWORK AND OF ALL FLOOR FINISHES.
- WHERE HVAC OR OTHER MECHANICAL, ELECTRICAL AND PLUMBING ITEMS PENETRATE PARTITIONS, STUDS SHALL BE BRACED AND FRAMED TO STRUCTURE AS REQUIRED TO PROVIDE ADEQUATE SUPPORT. ALL PENETRATIONS THROUGH ACOUSTICAL AND FIRE-RATED WALLS SHALL BE SEALED TO PROVIDE FIRE, SMOKE AND/OR ACOUSTICAL ISOLATION OF SPACES WITH APPROPRIATE ACOUSTICAL/FIRESTOP MATERIAL.
- PROVIDE GLASS/MAT, WATER RESISTANT BACKING BOARD AT ALL WET LOCATIONS.
- EXCEPT AT FIRE-RATED PARTITIONS, ALL WALL AND COLUMN GYPSUM BOARD FACING SHALL BE HELD AT 3/8 INCH BELOW STRUCTURE, UNLESS NOTED OR SHOWN OTHERWISE.
- PROVIDE AND INSTALL BLOCKING REQUIRED FOR ALL A.V. EQUIPMENT. G.C. TO COORDINATE FOR FINAL LOCATIONS AND SIZE REQUIREMENTS.

FE-1 INDICATES FIRE EXTINGUISHER (FE) LOCATION WITH 75'-0" RADIUS COVERAGE AREA. SEE SPECIFICATIONS FOR FE TYPE.

WALL FINISH LEGEND

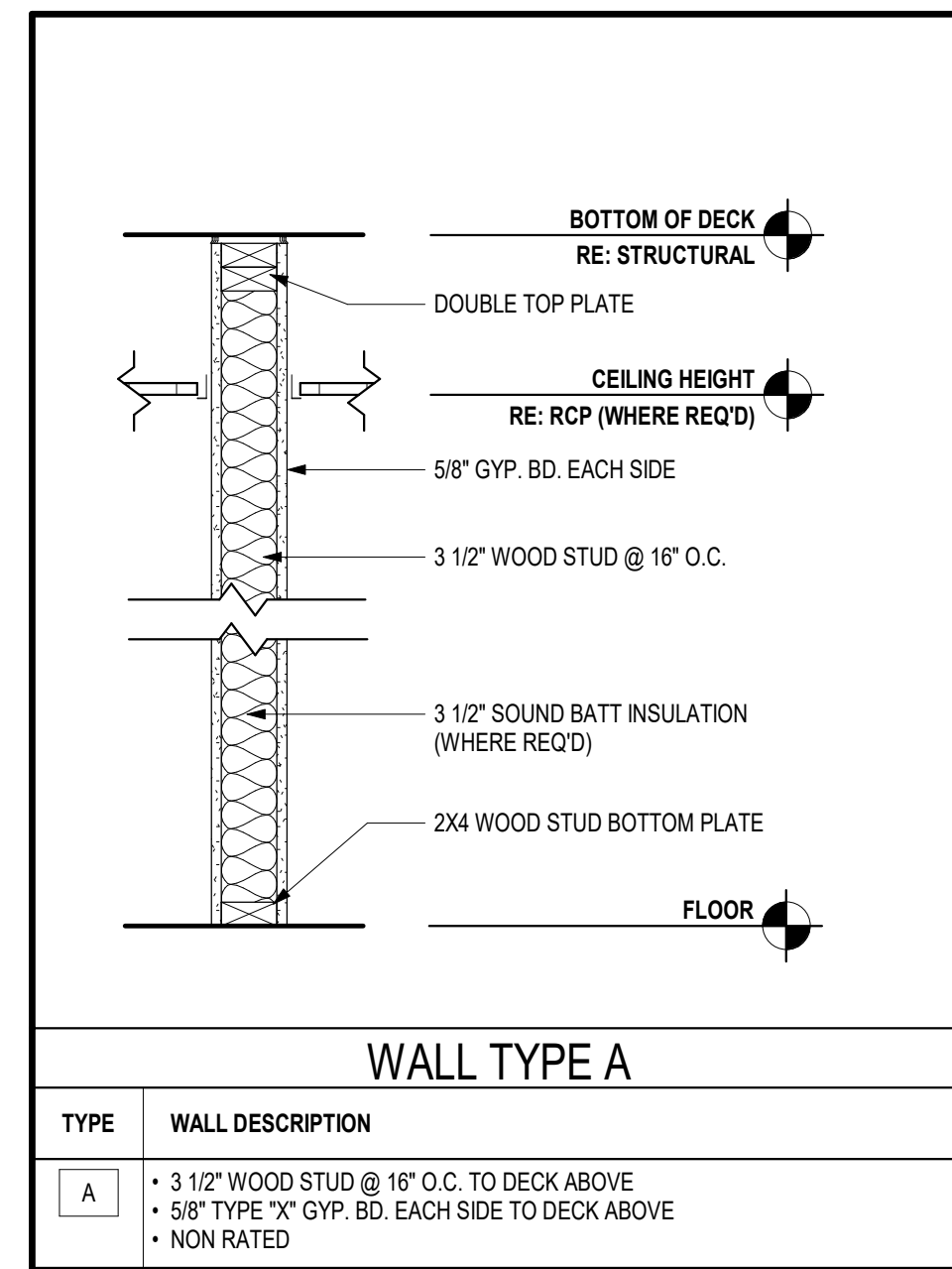
ACCENT PAINT (P2)
EPOXY ACCENT PAINT (EP1)
EPOXY PAINT (EP2)
WET WALL FINISH (EP1 OR T1/TG1)

NOT ALL WALL FINISHES ARE GRAPHICALLY SHOWN. REFER TO FINISH SCHEDULE AND INTERIOR ELEVATIONS FOR SPECIFIC LOCATIONS AND MATERIALS.

FLOOR FINISH LEGEND

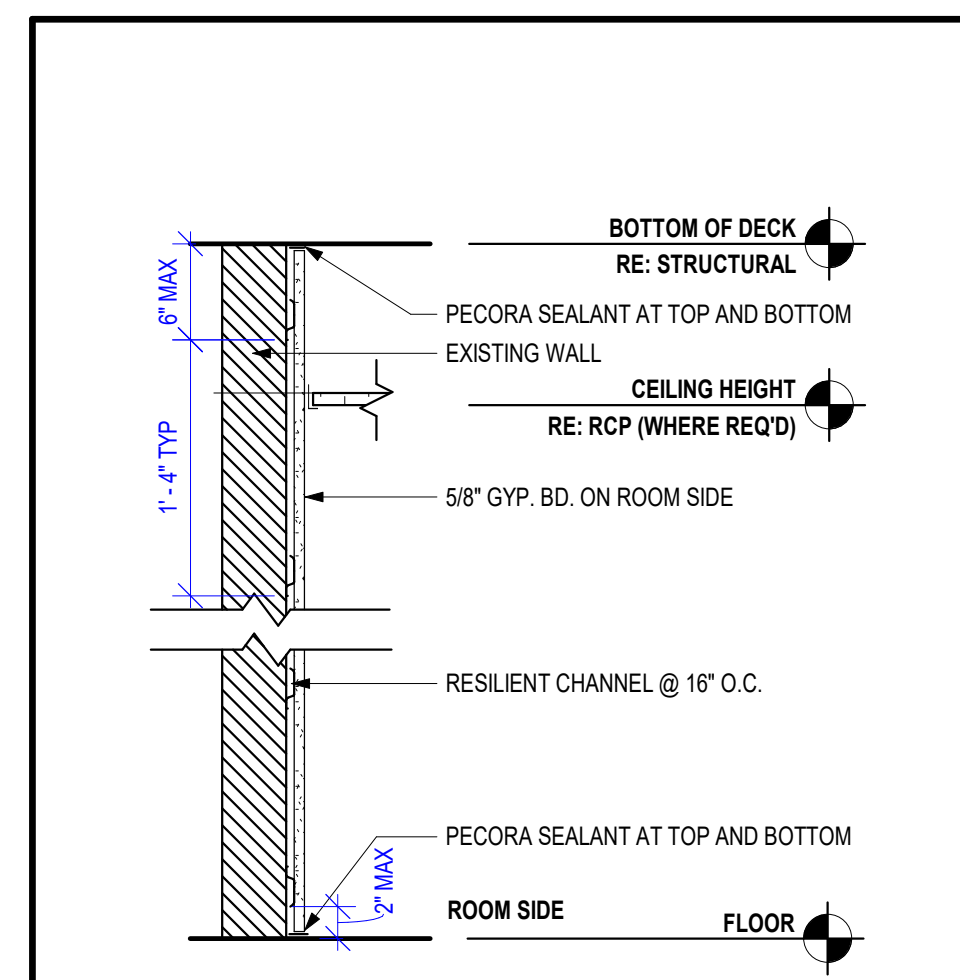
GRAIN / INSTALL DIRECTION
LVT1

NOT ALL FLOOR FINISHES ARE GRAPHICALLY SHOWN. ONLY THOSE FOR TRANSITION CLARIFICATION.



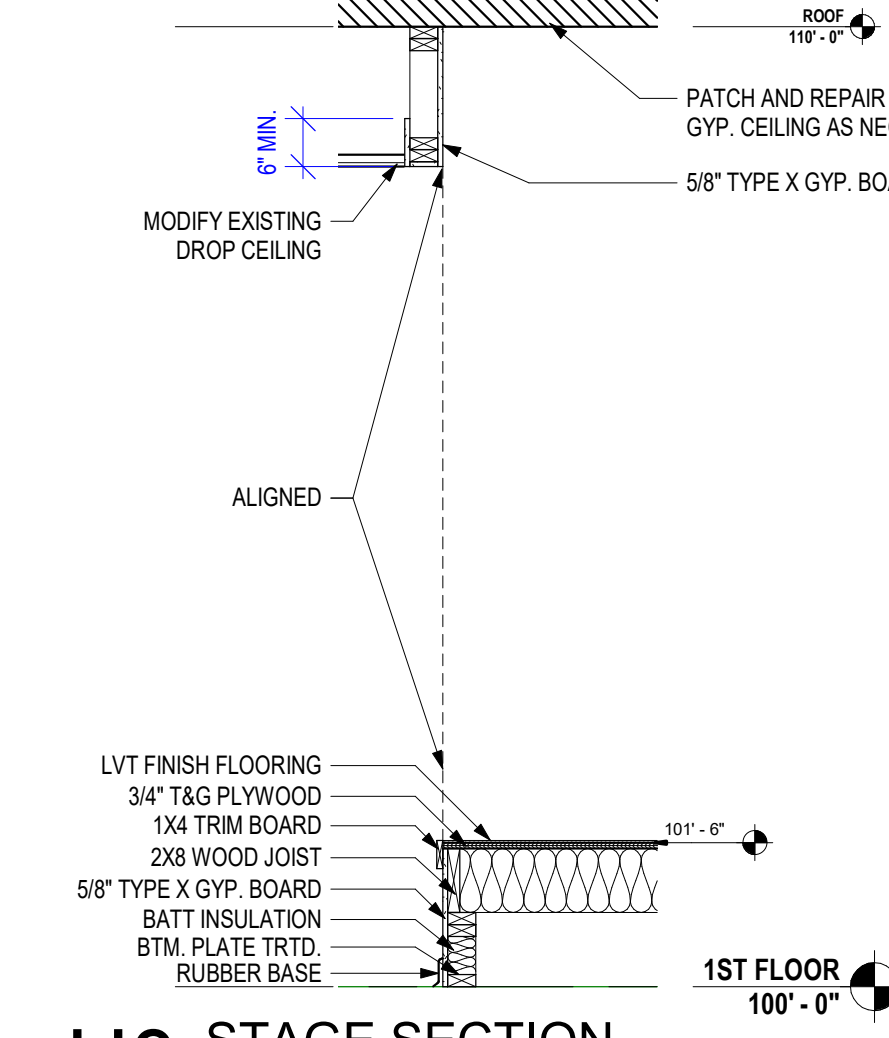
WALL TYPE A

TYPE	WALL DESCRIPTION
A	3 1/2" WOOD STUD @ 16" O.C. TO DECK ABOVE. 5/8" TYPE 'X' GYP. BD. EACH SIDE TO DECK ABOVE. NON RATED



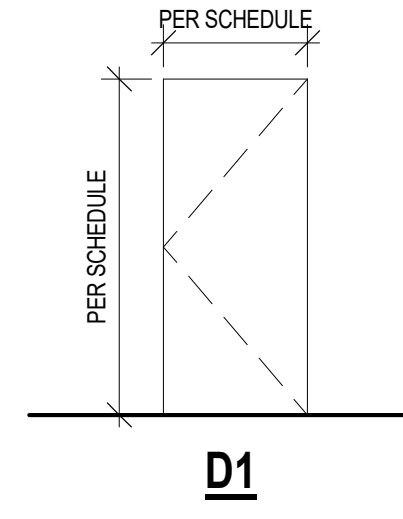
WALL TYPE E

TYPE	WALL DESCRIPTION
E	7/8" HAT CHANNEL @ 16" O.C. TO DECK ABOVE. 5/8" GYP. BD. ONE SIDE TO DECK ABOVE. NO SOUND BATT INSUL. NON RATED



H8 STAGE SECTION

1/2" = 1'-0"



H6 DOOR TYPE ELEVATIONS

1/4" = 1'-0"

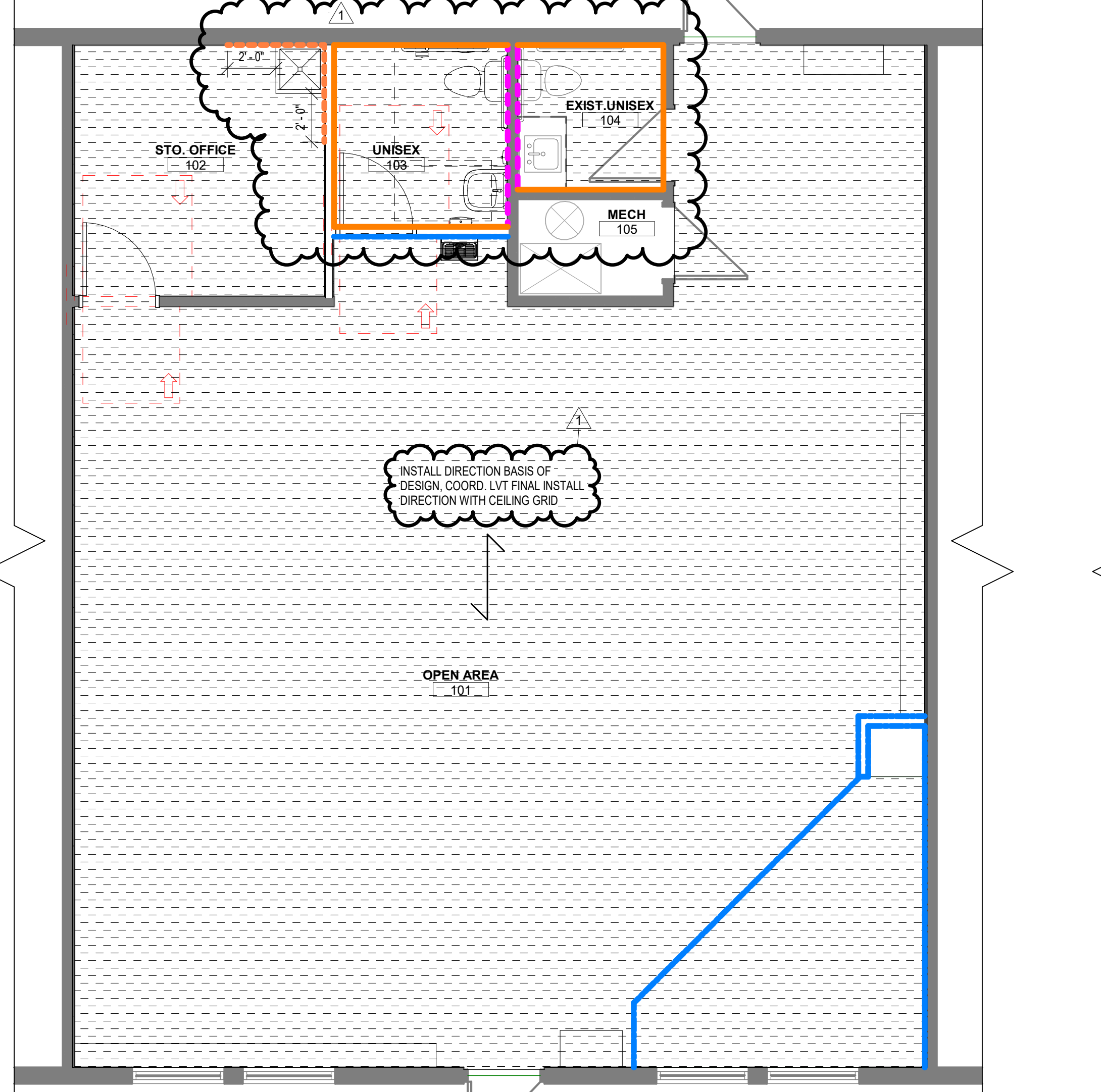
DOOR SCHEDULE					
DOOR NO.	ROOM-NAME	WIDTH	HEIGHT	DOOR TYPE	RTG
102	STO. OFFICE	3'-0"	7'-0"	D1	
103	OPEN AREA	3'-0"	7'-0"	D1	

DOOR SCHEDULE NOTES:
1. PROTECT DOOR AND FRAME FROM DAMAGE THROUGHOUT CONSTRUCTION. ANY DAMAGE TO BE REPAIRED/REPLACED PER OWNER DISCRETION.
2. DOORS TO BE 1 3/4" THICK, UNLESS NOTED OTHERWISE ON DOOR SCHEDULE.
3. DOOR FRAME 2" OFF FINISHED FACE ON HINGE SIDE.

ACCESSORY SCHEDULE					
TYPE MARK	MANUFACTURER	DESCRIPTION	MODEL	W x D x H	FINISH
1	BOBRICK WASHROOM EQUIPMENT, INC.	SURFACE MOUNTED SANITARY NAPKIN DISPOSAL	B-270	7 1/2" x 3 13/16" x 10"	STAINLESS STEEL
2	BOBRICK WASHROOM EQUIPMENT, INC.	SOAP DISPENSER - SURFACE MOUNTED	B-4112	7" x 2 9/16" x 6 1/8"	STAINLESS STEEL
3	BOBRICK WASHROOM EQUIPMENT, INC.	PAPER TOWEL DISPENSER	B-4202	10 15/16" x 2 9/16" x 13 1/4"	STAINLESS STEEL
4	BOBRICK WASHROOM EQUIPMENT, INC.	MULTI-ROLL TOILET TISSUE DISPENSER	B-4288	6 1/16" x 5 15/16" x 11"	STAINLESS STEEL
5	BOBRICK WASHROOM EQUIPMENT, INC.	VERTICAL GRAB BAR, 1-1/2" DIA., SS, 18"	B-6806-18	1-1/2" DIA x 18"	STAINLESS STEEL
6	BOBRICK WASHROOM EQUIPMENT, INC.	GRAB BAR, 1-1/2" DIA., SS, 36"	B-6806-36	1-1/2" DIA x 36"	STAINLESS STEEL
7	BOBRICK WASHROOM EQUIPMENT, INC.	GRAB BAR, 1-1/2" DIA., SS, 42"	B-6806-42	1-1/2" DIA x 42"	STAINLESS STEEL
8	BOBRICK WASHROOM EQUIPMENT, INC.	MIRROR, WITH SS FRAME	B-165 1824	18" x 34" x 24"	STAINLESS STEEL

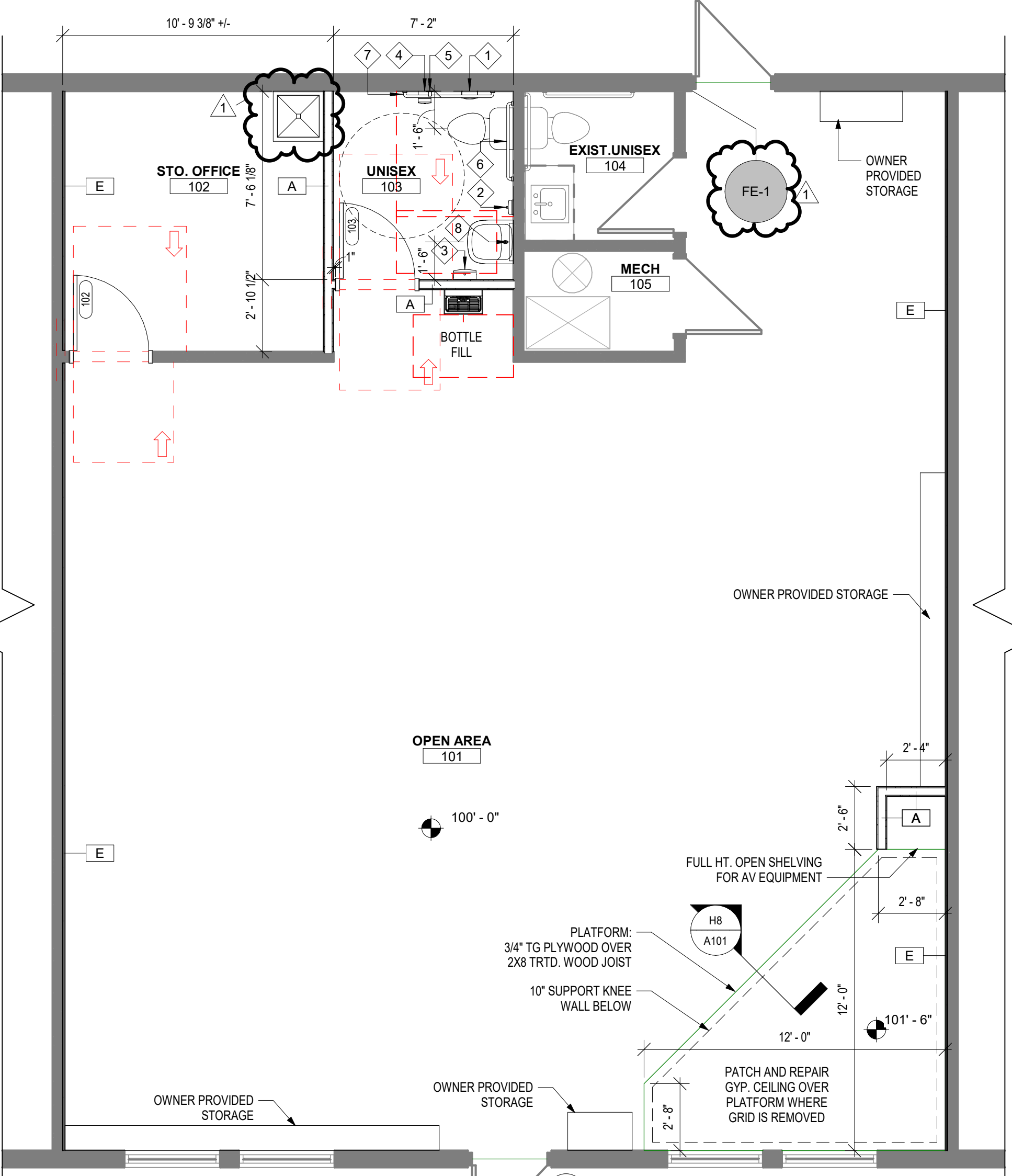
ACCESSORY GENERAL NOTES:
A. ALL TOILET ACCESSORY LOCATIONS BASED ON FLOOR PLAN LAYOUT.
B. REFER TO G002 AND MANUFACTURER'S SPECIFICATIONS FOR MOUNTING HEIGHTS.
C. COORDINATE ALL MOUNTING HEIGHTS W/ PLUMBING FIXTURES TO ALLOW PROPER OPERATION & INFORM ARCHITECT IN WRITING OF ANY CONFLICTS.
D. G.C. TO VERIFY DIRECTLY W/ OWNER TO DETERMINE MOUNTING HEIGHTS, U.N.O.
E. REFER TO PLANS FOR ITEMS NOTED AS F.P.A.E.
F. MIRRORS TO BE CENTERED AT SINKS, TYP.

FINISH LEGEND						
FLOOR / WALL / CEILING	SYMBOL	MATERIAL	MANUFACTURER	TYPE	COLOR	TYP. AREA / NOTES
FLOOR FINISH						ASHLAR INSTALLATION PATTERN, RE: PLAN FOR BASIS OF DESIGN INSTALLATION DIRECTION, COORD. FINAL INSTALLATION DIRECTION W/ CEILING GRID, COORD. FINAL FLOORING SELECTION W/ OWNER
FLOOR FINISH	LVT1		J & J INDUSTRIES, INC.			
WALL BASE						
WALL BASE	VB1	VINYL BASE	TARKETT JOHNSONITE	4" TRAD. COVE BASE	CB-48	ALL SPACES EXCEPT MECH; B.O.D. FINAL SELECTION - COORD W/ OWNER
WALL FINISH						
WALL FINISH	EP1	EPOXY PAINT	BEHR	BEHR PRO EPOXY EGGSHELL N450-2	ZERO GRAVITY	RESTROOMS
WALL FINISH	EP2	EPOXY PAINT	BEHR	BEHR PRO EPOXY EGGSHELL N450-2	MAUI MIST BL-W10	ADJACENT TO MOP SINK
WALL FINISH	P1	PAINT	BEHR	EGGSHELL	MAUI MIST BL-W10	ALL WALLS U.N.O.
WALL FINISH	P2	PAINT	BEHR	EGGSHELL	ZERO GRAVITY N450-2	STAGE, FOUNTAIN ALCOVE
WALL FINISH	T1	WET WALL TILE	DALTILE	3"x6" SEMI-GLOSS W/ COVE BASE	ARCTIC WHITE	COORD. VERTICAL/HORIZONTAL INSTALLATION DIRECTION W/ OWNER
WALL FINISH	TG1	TILE GROUT	MAPEI	KERACOLOR SANDED GROUT	19 PEARL GRAY	RESTROOM WET WALLS
CEILING FINISH						
CEILING FINISH	P3	PAINT	BEHR	FLAT	MAUI MIST BL-W10	RAISED GYP. CEILING ABOVE STAGE



A8 1ST FLOOR - FINISH

1/4" = 1'-0"



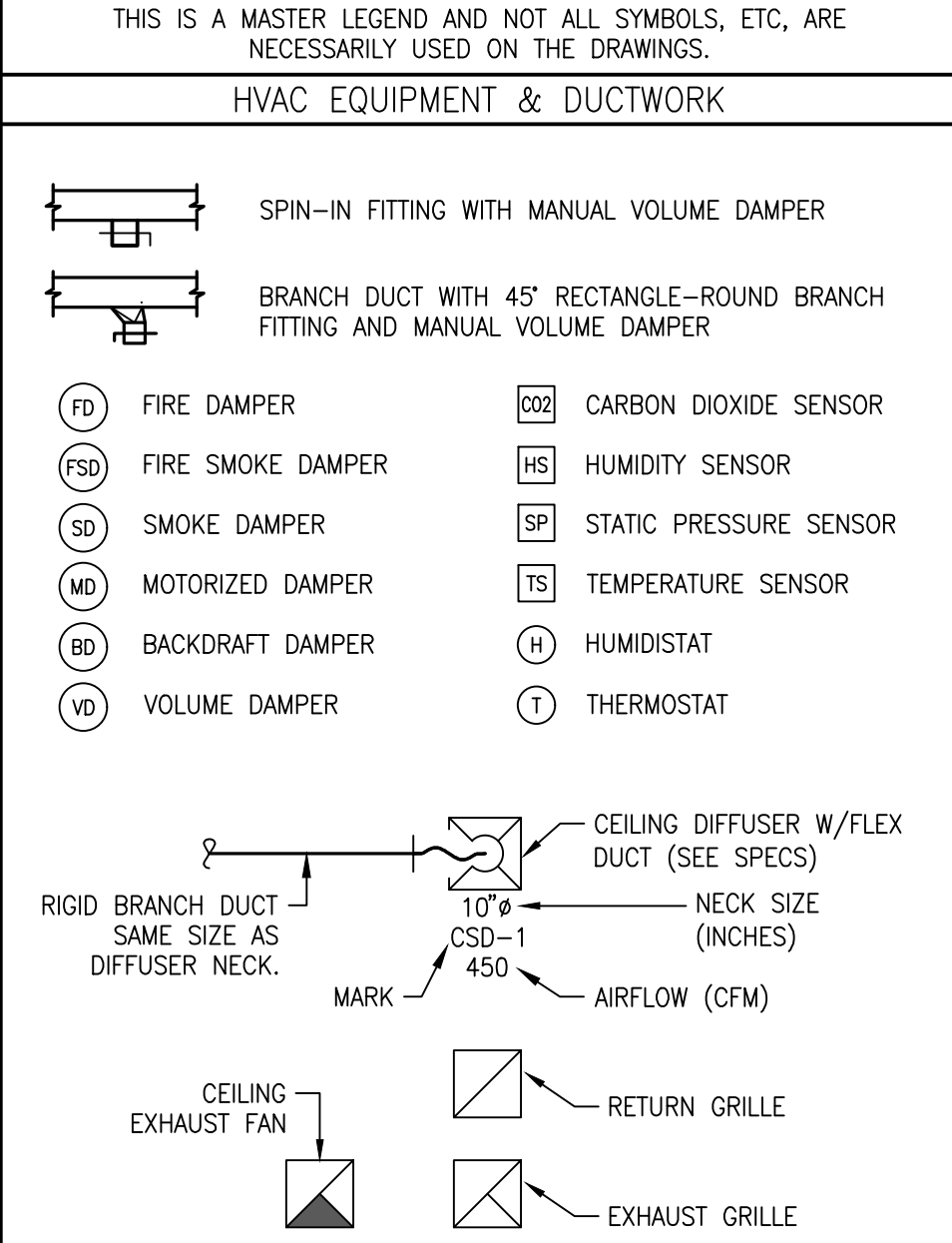
A4 1ST FLOOR

1/4" = 1'-0"

MECHANICAL SPECIFICATIONS

1. GENERAL PROVISIONS:
- A. PROVIDE ALL LABOR, MATERIALS, AND EQUIPMENT NECESSARY FOR THE COMPLETE INSTALLATION OF THE MECHANICAL SYSTEMS OUTLINED.
- B. OBTAIN ALL PERMITS, FEES, LICENSES, INSPECTIONS, AND CERTIFICATIONS OF COMPLIANCE OR APPROVAL AS REQUIRED BY AUTHORITIES.
- C. ALL WORK SHALL BE PERFORMED IN ACCORDANCE WITH ALL APPLICABLE LAWS, CODES AND REGULATIONS OF THE GOVERNMENTAL BODIES HAVING JURISDICTION OVER THE SITE.
- D. ALL TESTING REQUIRED BY AUTHORITIES SHALL BE CONSIDERED PART OF THIS WORK.
- E. DURING CONSTRUCTION, ALL FIXTURES, EQUIPMENT, PIPE, DUCT, ETC. SHALL BE COVERED, PLUGGED, OR CAPPED AS REQUIRED TO KEEP CLEAN AND UNDAMAGED. ALL DAMAGED ITEMS SHALL BE RESTORED TO ORIGINAL CONDITION OR REPLACED. ALL PROTECTIVE COVERING SHALL BE REMOVED BEFORE FINAL ACCEPTANCE.
- F. PROVIDE ALL NECESSARY CUTTING AND PATCHING OF WALLS, FLOORS, CEILINGS, AND ROOFS AS NECESSARY. PATCH AROUND ALL OPENINGS SHALL MATCH ADJACENT AREA. COORDINATE ALL ROOFING WORK WITH OWNER OR RESPONSIBLE PARTY, SO THAT THE EXISTING ROOFING WARRANTY WILL BE MAINTAINED.
- G. CONTRACTOR SHALL GUARANTEE ALL WORK AND MATERIALS AGAINST DEFECT FOR A PERIOD OF ONE YEAR FROM FINAL ACCEPTANCE.
- H. INSPECTION OF THE SITE. THIS CONTRACTOR SHALL THOROUGHLY ACQUAINT HIMSELF WITH THE MEP DRAWINGS, SPECIFICATIONS, DETAIL, AND THE SITE. THIS CONTRACTOR SHALL NOTIFY THE ARCHITECT OF ANY SPECIAL OR UNUSUAL PROBLEMS, CONFLICTS, OR OBSTRUCTIONS THAT AFFECT HIS BID.
- I. FOR THE PURPOSE OF CLARNESS AND LEGIBILITY, THE MECHANICAL AND PLUMBING DRAWINGS ARE ESSENTIALLY DIAGRAMMATIC AND DO NOT SHOW ALL OFFSETS AND FITTINGS REQUIRED FOR INSTALLATION. DO NOT SCALE DRAWINGS. THE SIZE AND LOCATION OF EQUIPMENT IS SHOWN TO SCALE WHEREVER POSSIBLE. THE CONTRACTOR SHALL VERIFY ALL CONDITIONS AND DATA AS INDICATED ON THE DRAWINGS AND IN THE SPECIFICATION SECTIONS WHERE MECHANICAL WORK INTERFACES WITH OTHER TRADES.
- J. IN THE EVENT OF A CONFLICT OR INCONSISTENCY BETWEEN ITEMS INDICATED ON THE PLANS OR WITH CODE REQUIREMENTS, THE NOTE OR CODE WHICH PRESCRIBES AND ESTABLISHES THE MORE COMPLETE JOB OR HIGHER STANDARD SHALL PREVAIL.
- K. INSTALL MATERIALS AND SYSTEMS IN ACCORDANCE WITH MANUFACTURER'S INSTRUCTIONS AND APPROVED SUBMITTALS. INSTALL MATERIALS IN PROPER RELATION WITH ADJACENT CONSTRUCTION AND WITH UNIFORM APPEARANCE FOR EXPOSED WORK. COORDINATE WITH WORK OF OTHER SECTIONS. COMPLY WITH APPLICABLE REGULATIONS AND CODE REQUIREMENTS. PROVIDE PROPER CLEARANCES FOR SERVICING.
2. MOTORS:
- A. PROVIDE THERMAL OVERLOAD PROTECTION FOR EACH MOTOR PROVIDED BY THIS WORK.
3. DUCTWORK:
- A. ALL DUCTWORK UNLESS OTHERWISE INDICATED SHALL BE FABRICATED FROM GALVANIZED SHEET STEEL COMPLYING WITH ASTM A 527, LOOKFORMING QUALITY, WITH G60 ZINC COATING IN ACCORDANCE WITH ASTM A 525, AND MILL PHOSPHATIZED FOR EXPOSED LOCATIONS.
- B. DUCTWORK METAL GAUGES, REINFORCING, ETC SHALL BE CONSTRUCTED IN ACCORDANCE WITH SMACNA "HVAC DUCT CONSTRUCTION STANDARDS," LATEST EDITION FOR A 2" WATER GAUGE STATIC PRESSURE.
- C. ALL FITTINGS SHALL BE CONSTRUCTED IN ACCORDANCE WITH SMACNA "HVAC DUCT CONSTRUCTION STANDARDS," LATEST EDITION.
4. FLEXIBLE DUCT:
- A. ATCO #086 (R-6), OR EQUAL.
- B. FACTORY APPLIED INSULATION AND VAPOR BARRIER, 1-1/2" THICK.
5. REMODELING WORK:
- A. THIS PROJECT INVOLVES CONSTRUCTION INSIDE AN EXISTING STRUCTURE. CONTRACTORS, BY SUBMITTING A BID ARE DEEMED TO BE COMPLETELY FAMILIAR WITH THE EXISTING CONDITIONS OF THE BUILDING AS IT INFLUENCES THE WORK DESCRIBED. NO CLAIMS FOR EXTRA COMPENSATION WILL BE CONSIDERED FOR EXISTING CONDITIONS VISIBLE OR REASONABLY INFERABLE FROM A CAREFUL EXAMINATION OF THE EXISTING BUILDING CONDITIONS.
- B. CONTRACTOR SHALL INSPECT THE EXISTING FIELD CONDITIONS AT THE SITE AND THE CONTRACT DOCUMENTS PRIOR TO THE START OF ANY WORK TO DETERMINE WHAT EFFECT THE EXISTING CONDITIONS WILL HAVE ON THE WORK POTENTIAL. CONTRACTOR SHALL REPORT DISCREPANCIES TO THE ARCHITECT AND INCLUDE IN THE BID ALL COSTS REQUIRED TO MAKE THE WORK MEET EXISTING CONDITIONS.
- C. PROTECT ADJACENT MATERIALS INDICATED TO REMAIN. INSTALL AND MAINTAIN DUST AND NOISE BARRIERS TO KEEP DIRT, DUST, AND NOISE FROM BEING TRANSMITTED TO ADJACENT AREAS. REMOVE PROTECTION AND BARRIERS AFTER REMODELING OPERATIONS ARE COMPLETE.

MECHANICAL SYMBOLS



ABBREVIATIONS			
AFF	ABOVE FINISHED FLOOR	MC	MECHANICAL CONTRACTOR
BAS	BUILDING AUTOMATION SYSTEM	MIN	MINIMUM
BD	BACKDRAFT	NC	NOISE CRITERIA
CFM	CUBIC FEET PER MINUTE	OA	OUTSIDE AIR
DDC	DIRECT DIGITAL CONTROL	RA	RETURN AIR
DX	DIRECT EXPANSION	SA	SUPPLY AIR
EA	EXHAUST AIR	SD	SMOKE DUCT DETECTOR
FFA	FROM FLOOR ABOVE	TFA	TO FLOOR ABOVE
FFB	FROM FLOOR BELOW	TFB	TO FLOOR BELOW
GPM	GALLONS PER MINUTE	TYP	TYPICAL
IN WC	INCHES OF WATER COLUMN	UNO	UNLESS NOTED OTHERWISE
MAX	MAXIMUM	W/	WITH
MBH	1000 BTU PER HOUR	W/O	WITHOUT

STANDARD MOUNTING HEIGHTS	
(AFF, UNLESS NOTES OTHERWISE)	
THERMOSTATS (USER ADJUSTABLE) (TOP OF DEVICE)	48"
CONTROLS (TOP OF DEVICE)	48"

ANNOTATION	
#	PLAN WORK NOTE
RTU	MECHANICAL EQUIPMENT DESIGNATION (CONTRACTOR FURNISHED AND INSTALLED UNLESS NOTED OTHERWISE)
●	CONNECTION POINT OF NEW WORK TO EXISTING

EXHAUST FAN SCHEDULE

MARK	AREA SERVED	MANUFACTURER	MODEL	MOUNTING / TYPE	CFM	ESP (IN)	DRIVE	POWER	ELECTRICAL		WEIGHT	NOTES
EF-1	NEW RESTROOM 103	PANASONIC	FV-0511VQ1	CEILING / CABIENT	110	0.1	DIRECT	10.6w	VOLTS	PHASE	12	A,B,C

NOTES:

A. PROVIDE INTERNAL CABINET BACKDRAFT DAMPER, CEILING GRILLE, ALL THREAD RODS AND VIBRATION ISOLATORS.

B. INTERLOCK FAN OPERATION WITH LIGHT SWITCH

C. PROVIDE WITH SPEED CONTROL.

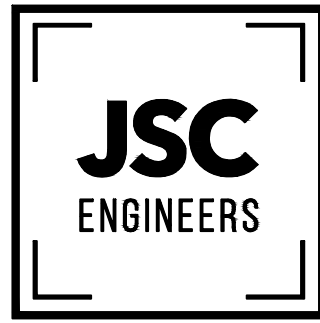
OUTDOOR AIR CALCULATIONS

UNIT	AREA (SQ-FT)	OCCUPANCY CLASSIFICATION	SPECIFIED OCCUPANCY	OUTDOOR AIRFLOW RATE PER PERSON (Rp), CFM/PERSON	AREA OUTDOOR AIRFLOW RATE IN BREATHING ZONE (Ra), CFM/SQ-FT	REQUIRED AIR FLOW, CFM
EXISTING UNIT	108	OFFICE	2	5	0.06	16.5
	1235	EXERCISE	23	20	0.06	534.1
					TOTAL	550.6

KEYED PLAN NOTES

1. EXISTING HVAC SYSTEM TO REMAIN. RELOCATE DIFFUSERS AS REQUIRED TO ACCOMMODATE MODIFICATIONS TO EXISTING CEILING GRID.
2. PROVIDE NEW 12x10 RETURN AIR TRANSFER GRILLE ON EACH SIDE OF WALL WITH OPENING THROUGH WALL. TITUS MODEL 3L OR EQUAL GRILLE.
3. EXISTING RESTROOM TO REMAIN. VERIFY RESTROOM HAS EXISTING OPERATIONAL EXHAUST FAN TERMINATING TO THE EXTERIOR OF BUILDING.
4. PROVIDE CEILING EXHAUST FAN WITH 4"Ø DUCT TO ROOF CAP. CAP SHALL HAVE BIRDSCREEN. LOCATE DISCHARGE A MINIMUM OF 10'-0" FROM ANY OUTSIDE AIR INTAKE.
5. EXISTING SUPPLY FOR ROOM TO REMAIN. RELOCATE AS REQUIRED TO BE WITHIN OFFICE.
6. NOTE FOR PLANCHCK PURPOSES. EXISTING AIR RETURN GRILLE LOW ON WALL. GRILLE TO REMAIN. RETURN AIR SYSTEM IS NOT PLENUM RETURN.
7. ROUTE FRESH AIR DUCT DOWN TO SIDE OF RETURN DUCT. AT CONNECTION TO RETURN DUCT PROVIDE MANUAL DAMPER BALANCED TO 575 CFM. PROVIDE CO2 SENSOR IN ROOM INTERLOCKED WITH 120V MOTORIZED DAMPER AT WALL LOUVER TO OPEN UPON DETECTION OF CO2. SEE DETAIL 3 ON THIS SHEET.
8. PROVIDE 18"x18" DRAINABLE LOUVER WITH BIRDSCREEN, RUSKIN ELF6375DX OR EQUAL. COORDINATE THICKNESS WITH WALL AND COLOR WITH ARCHITECT. PRIOR TO FRESH AIR DUCT CONNECTION PROVIDE CLASS-1 LOW LEAKAGE MOTORIZED DAMPER, GREENHECK VCD-33, WITH 115V ACTUATOR. LOCATE LOUVER A MINIMUM OF 10'-0" FROM ANY EXHAUST DISCHARGE.
9. PROVIDE WALL MOUNT CO2 SENSOR, HONEYWELL C7232 OR EQUAL. INTERLOCK WITH ACTUATOR AT WALL LOUVER TO OPEN UPON DETECTION OF CO2 LEVELS 800PPM OR GREATER.

MEP ENGINEER



MO COA NO. 2012008786 / KS COA NO. E-2818
1925 CENTRAL STREET, SUITE 201
KANSAS CITY, MO 64109
phone: (816) 272-5289
email: jprothier@jcsengineers.com

JAZZERCISE LSMO

618 SW 3RD STREET, SUITE E
LEE'S SUMMIT, MO 64063

REVISION DATES:
01.13.23 PLANCHCK

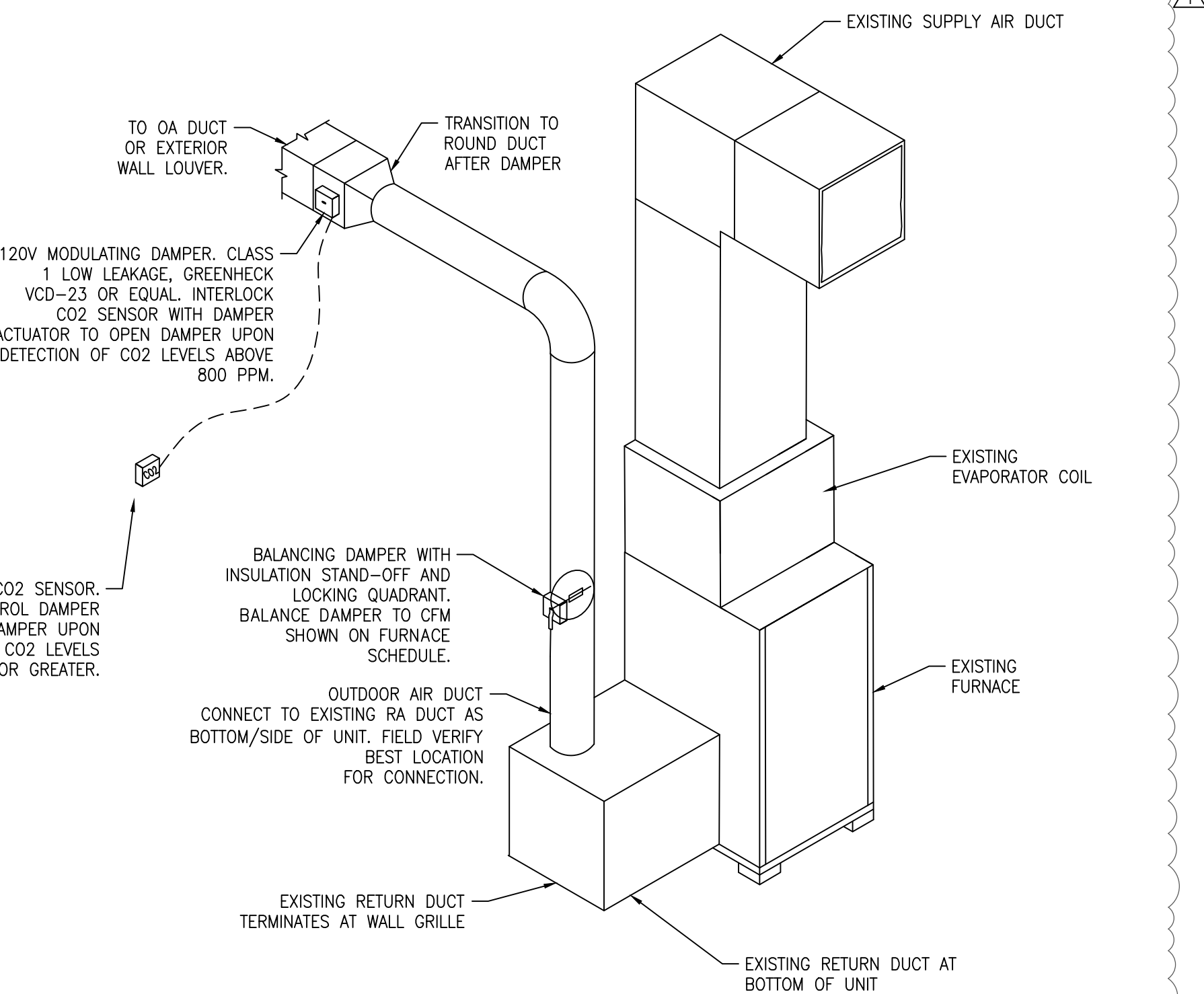


PROFESSIONAL SEAL

M101

ISSUE DATE: 01.13.23
JSC PROJECT #: 22-339

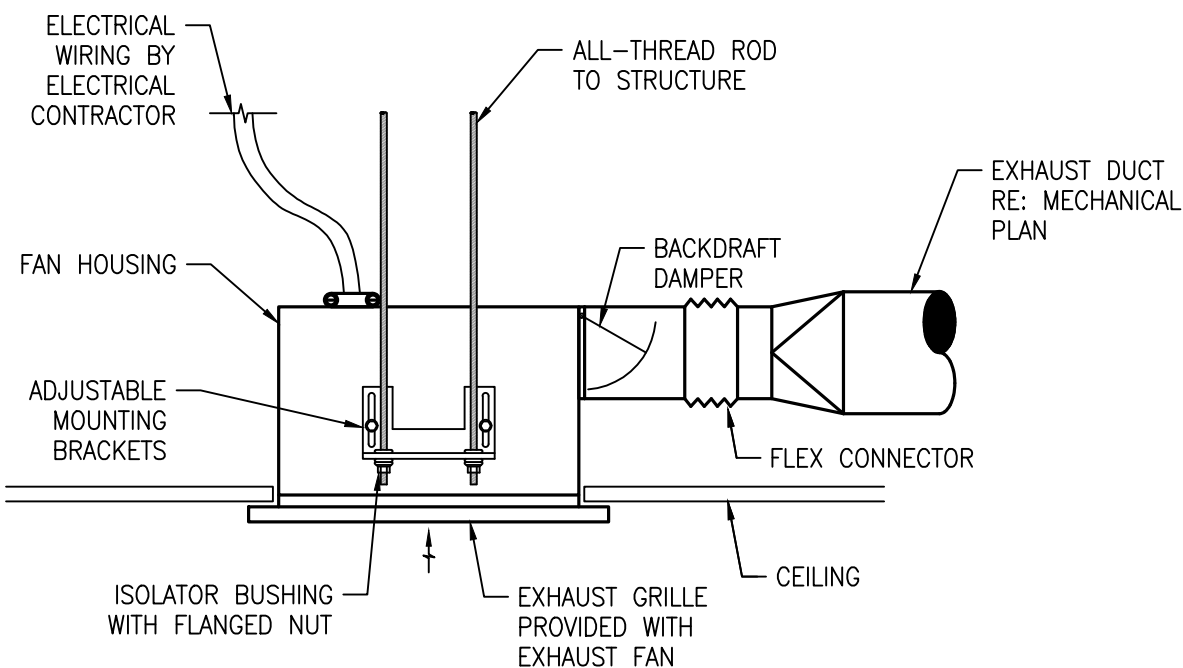
MECHANICAL PLANS,
SPECS & SCHEDULES



OA TO FURNACE DETAIL

SCALE : NO SCALE

3



CEILING MOUNTED EXHAUST FAN

SCALE : NO SCALE

2

MECHANICAL PLAN

SCALE : 1/4" = 1'-0"

1

PLUMBING SPECIFICATIONS

- GENERAL PROVISIONS:
 - PROVIDE ALL LABOR, MATERIALS, AND EQUIPMENT NECESSARY FOR THE COMPLETE INSTALLATION OF THE PLUMBING SYSTEMS OUTLINED.
 - OBTAIN ALL PERMITS, FEES, LICENSES, INSPECTIONS, AND CERTIFICATIONS OF COMPLIANCE OR APPROVAL AS REQUIRED BY AUTHORITIES.
 - ALL TESTING REQUIRED BY AUTHORITIES SHALL BE CONSIDERED PART OF THIS WORK.
 - PROVIDE ALL NECESSARY CUTTING AND PATCHING OF WALLS, FLOORS, CEILINGS, AND ROOFS AS NECESSARY. PATCH AROUND ALL OPENINGS SHALL MATCH ADJACENT AREA. COORDINATE ALL ROOFING WORK WITH OWNER OR RESPONSIBLE PARTY, SO THAT THE EXISTING ROOFING WARRANTY WILL BE MAINTAINED.
 - CONTRACTOR SHALL GUARANTEE ALL WORK AND MATERIALS AGAINST DEFECT FOR A PERIOD OF ONE YEAR FROM FINAL ACCEPTANCE.
 - INSPECTION OF THE SITE: THIS CONTRACTOR SHALL THOROUGHLY ACQUAINT HIMSELF WITH THE MEP DRAWINGS, SPECIFICATIONS, DETAIL, AND THE SITE. THIS CONTRACTOR SHALL NOTIFY THE ARCHITECT OF ANY SPECIAL OR UNUSUAL PROBLEMS, CONFLICTS, OR OBSTRUCTIONS THAT AFFECT HIS BID.
 - FOR THE PURPOSE OF CLEARNESS AND LEGIBILITY, THE PLUMBING DRAWINGS ARE ESSENTIALLY DIAGRAMMATIC AND DO NOT SHOW ALL OFFSETS AND FITTINGS REQUIRED FOR INSTALLATION. DO NOT SCALE DRAWINGS. THE SIZE AND LOCATION OF EQUIPMENT IS SHOWN TO SCALE WHEREVER POSSIBLE. THE CONTRACTOR SHALL VERIFY ALL CONDITIONS AND DATA AS INDICATED ON THE DRAWINGS AND IN THE SPECIFICATION SECTIONS WHERE MECHANICAL WORK INTERFACES WITH OTHER TRADES.
- PLUMBING:
 - PROVIDE AN APPROVED WATER HAMMER ARRESTOR FOR EACH PLUMBING FIXTURE SUPPLY AS REQUIRED BY FIXTURE MANUFACTURER.
 - ALL EXPOSED PIPE IN FINISHED AREAS SHALL BE CHROME PLATED BRASS PIPE, NO FERROUS PIPE.
 - PROVIDE ACCESS PANELS FOR ALL CONCEALED VALVES AND TRAPS.
 - ALL SEWER PIPING LOCATED INSIDE THE BUILDING SHALL BE INSTALLED WITH THE FOLLOWING SLOPES:
 - INSTALL 2-1/2" AND SMALLER PIPE AT 1/4" PER FOOT FALL.
 - INSTALL 3" AND LARGER PIPE AT 1/8" PER FOOT FALL.
- PIPING:
 - DOMESTIC COLD AND HOT WATER (ABOVEGROUND).
 - TYPE L HARD DRAWN COPPER TUBING, ASTM B-88 WITH WROUGHT BRONZE SOLDERED FITTINGS.
 - BALL VALVE: CRANE #932 OR EQUAL.
 - PEX, HIGH DENSITY CROSS-LINKED POLYETHYLENE TUBING IS PERMITTED FOR USE. TUBING SHALL BE MANUFACTURED TO THE REQUIREMENTS OF ASTM F876 AND MEET THE STANDARD GRADE HYDROSTATIC PRESSURE RATING FROM THE PLASTIC PIPE INSTITUTE IN ACCORDANCE WITH TR-4/03. PEX MECHANICAL, CRIMP/INSERT FITTINGS SHALL BE INSTALLED IN ACCORDANCE WITH MANUFACTURER'S INSTRUCTIONS. PIPE SIZE SHOW ON THE DRAWINGS ARE NOMINAL COPPER PIPE SIZES. INCREASE PEX PIPING SIZE AS REQUIRED TO EQUAL OR EXCEED COPPER PIPE SIZE INSIDE DIAMETER.
 - SANITARY SEWER AND VENTS (UNDERGROUND, INTERIOR TO BUILDING).
 - WASTE, DRAIN AND VENT PIPE AND FITTINGS, THROUGHOUT THE BUILDING BELOW THE BASE SLAB TO THE LOCATIONS NOTED OUTSIDE OF THE BUILDING SHALL BE ASTM D2665 POLYVINYL CHLORIDE (PVC) DWV PIPE, SCHEDULE 40, SOLVENT JOINT.
 - SEWER LINES SHALL BE LOCATED IN GENERAL AS SHOWN ON THE DRAWINGS. THE EXACT LOCATIONS SHALL BE DETERMINED BY THE CONTRACTOR IN SUCH A MANNER AS TO MAINTAIN PROPER CLEARANCES AND SUFFICIENT SLOPE TO ENSURE DRAINAGE.
 - ALL PIPE HANGERS AND SUPPORTS SHALL BE STANDARD PRODUCTS OF GRINNELL, FEE AND MASON, OR ANVIL. HANGER SPACING SHALL BE IN ACCORDANCE WITH MSS-SP-69.
 - PROVIDE CHROME PLATED ESCUTCHEONS ON ALL PIPE ENTERING FINISHED AREAS.
- INSULATION:
 - ALL INSULATIONS AND ACCESSORIES SHALL HAVE A FIRE HAZARD CLASSIFICATION WITH A FLAME SPREAD RATING OF NOT OVER 25, A FUEL CONTRIBUTION RATING OF NOT OVER 50, AND A SMOKE DEVELOPMENT RATING OF NOT OVER 50, IN ACCORDANCE WITH NFPA.
 - PIPE INSULATION (ABOVE GRADE):
 - THE PIPE INSULATION USED SHALL HAVE A THERMAL CONDUCTIVITY OF 0.27 BTU PER IN/HR*SQ-FT*F OR LESS.
 - FLEXIBLE CLOSED CELL ELASTOMERIC THERMAL INSULATION, UNSLIT OR PRESLIT WITH PRESSURE SENSITIVE ADHESIVE SYSTEM FOR CLOSURE AND VAPOR SEALING, EQUAL TO ARMSTRONG AP ARMAFLEX OR ARMAFLEX 2000.
 - INSULATION SCHEDULE:
 - DOMESTIC COLD WATER: 1/2"
 - DOMESTIC HOT WATER: 1"
- TESTING, BALANCING AND CLEANING:
 - ALL PIPING SHALL BE TESTED FOR LEAKS BEFORE BEING CONCEALED IN WALL CONSTRUCTION OR COVERED WITH INSULATION.
 - SEWER AND VENT PIPING SHALL BE HYDROSTATICALLY TESTED WITH NO LESS THAN 10 FEET OF HEAD FOR A PERIOD OF NOT LESS THAN 15 MINUTES, PER THE LOCAL PLUMBING CODE, WITH NO LEAKS.
 - DOMESTIC WATER PIPING SHALL BE HYDROSTATICALLY TESTED AT A PRESSURE OF NOT LESS THAN 1-1/2 TIMES THE OPERATING PRESSURE, BUT NOT LESS THAN 60 PSI, FOR A PERIOD OF NOT LESS THAN 2 HOURS, WITH NO LEAKS.
- REMODELING WORK:
 - THIS PROJECT INVOLVES CONSTRUCTION INSIDE AN EXISTING STRUCTURE. CONTRACTORS, BY SUBMITTING A BID ARE DEEMED TO BE COMPLETELY FAMILIAR WITH THE EXISTING CONDITIONS OF THE BUILDING AS IT INFLUENCES THE WORK DESCRIBED. NO CLAIMS FOR EXTRA COMPENSATION WILL BE CONSIDERED FOR EXISTING CONDITIONS VISIBLE OR REASONABLY INFERABLE FROM A CAREFUL EXAMINATION OF THE EXISTING BUILDING CONDITIONS.
 - CONTRACTOR SHALL INSPECT THE EXISTING FIELD CONDITIONS AT THE SITE AND THE CONTRACT DOCUMENTS PRIOR TO THE START OF ANY WORK TO DETERMINE WHAT EFFECT THE EXISTING CONDITIONS WILL HAVE ON THE WORK POTENTIAL. CONTRACTOR SHALL REPORT DISCREPANCIES TO THE ARCHITECT AND INCLUDE IN THE BID ALL COSTS REQUIRED TO MAKE THE WORK MEET EXISTING CONDITIONS.
 - REMOVE ALL PIPING TO BE DEMOLISHED BACK TO PIPE MAIN OR EDGE OF PROJECT AREA AND CAP PIPE.
 - PIPING EMBEDDED IN FLOORS, WALLS, AND CEILINGS MAY REMAIN IF SUCH MATERIALS DO NOT INTERFERE WITH NEW INSTALLATIONS. PIPING TO REMAIN SHALL BE APPROVED BY THE ARCHITECT. REMOVE MATERIALS ABOVE ACCESSIBLE CEILINGS. DRAIN AND CAP PIPING ALLOWED TO REMAIN ABOVE CEILING OR BELOW FLOOR, CONCEALED FROM VIEW, EXCEPT AS OTHERWISE NOTED. PATCH FLOOR TO MATCH EXISTING.
 - PIPE SHALL BE CONCEALED WITH NEW OR EXISTING CONSTRUCTION WHENEVER POSSIBLE, UNLESS INDICATED OTHERWISE.
 - DEMOLITION: DISCONNECT, DEMOLISH, AND REMOVE ABANDONED MECHANICAL AND PLUMBING MATERIALS AND EQUIPMENT INDICATED TO BE REMOVED AND NOT INDICATED TO BE SALVAGED OR REMAIN. ALL WORK SHOWN DASHED IS TO BE DEMOLISHED. WORK SHOWN LIGHT IS EXISTING TO REMAIN. REFER TO ARCHITECTURAL PLANS FOR FURTHER EXTENT OF DEMOLITION REQUIRED.

PLUMBING SYMBOLS

SYMBOL	DESCRIPTION
—SS—	SANITARY SEWER (ABOVE GRADE)
—SS—	SANITARY SEWER (BELOW GRADE)
—CW—	GREASE WASTE (BELOW GRADE)
—CD—	CONDENSATE DRAIN
---V---	VENT PIPING
---CW---	COLD WATER PIPING
—HW---	HOT WATER PIPING
—HWR----	RECIRCULATING HOT WATER
—CA—	COMPRESSED AIR
—┐	PIPE ELBOW DOWN
—○	PIPE ELBOW UP
—X—	GATE VALVE
—○	FLOOR CLEANOUT (FCO)
—○	CLEANOUT AT GRADE (GCO)
—	WALL CLEANOUT (WCO)

ANNOTATION

- # PLAN WORK NOTE
- RTU
1 MECHANICAL EQUIPMENT DESIGNATION (CONTRACTOR FURNISHED AND INSTALLED UNLESS NOTED OTHERWISE)
- PLUMBING FIXTURE DESIGNATION
- CONNECTION POINT OF NEW WORK TO EXISTING

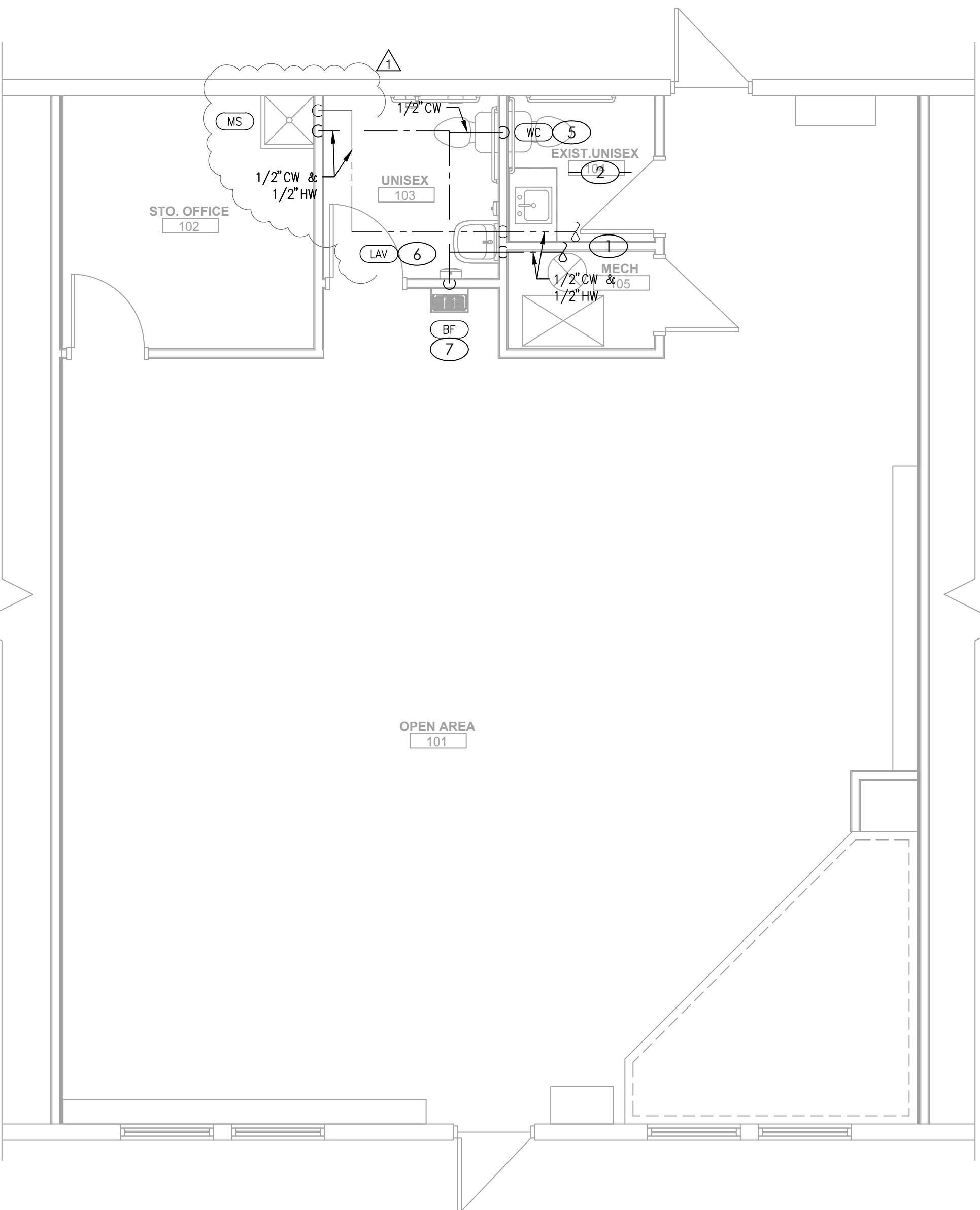
PLUMBING FIXTURE SCHEDULE

BASIS OF DESIGN: CONFIRM ALL SELECTIONS WITH OWNER AND ARCHITECT PRIOR TO PURCHASE.	
BF	BOTTLE FILLING STATION: ELKAY E28WS, ADA COMPLIANT, NON-FILTERED, ANTIMICROBIAL, STAINLESS STEEL, TOUCHLESS SENSOR ACTIVATION, 8 GPH, 115V, 5 FLA.
LAV	WALL MOUNT LAVATORY: AMERICAN STANDARD 0355.012, THREE FAUCET HOLE, 4" CENTERS, 20.5"x18.25" D-SHAPED BOWL, VITREOUS CHINA, MOUNT AT ADA HEIGHT, WITH DUAL HANDLE FAUCET (DELTA 2523LF-SSMPU). PROVIDE FLEXIBLE SS RISERS WITH CHROME PLATED STOP VALVES, P-TRAP WITH CLEANOUT AND ESCUTCHEONS. INSULATE WITH "HANDI-LAV-GUARD" MODEL 102, OR EQUAL.
WC	FLOOR-MOUNTED ADA WATER CLOSET: KOHLER K-3519-TR-0, HANDICAP ACCESSIBLE, VITREOUS CHINA, 1.0 GPF, ELONGATED BOWL, FLOOR MOUNTED W/ 17.125" BOWL HEIGHT, WHITE, VITREOUS CHINA TANK AND COVER CONTAINING FLUSH VALVE, WHITE OPEN-FRONT SEAT, CHROME STOPS, C.P. FLEXIBLE RISER TUBE, BOLT CAPS AND ESCUTCHEON.
MS	MOP SINK: FIAT MSB2424. 24"x24"x6" MOP BASIN WITH 3" DRAIN. WALL MOUNT FAUCET (FIAT 830AA), TWO HANDLES, PAIL HOOK, VACUUM BREAKER AND 3/4" NPT THREAD.

FIXTURE BRANCH CONNECTION SCHEDULE

FIXTURE	COLD WATER	HOT WATER	WASTE	VENT
BOTTLE FILLING STATION	1/2"	-	1-1/2"	1-1/2"
LAVATORY	1/2"	1/2"	1-1/2"	1-1/2"
MOP SINK	1/2"	1/2"	3"	2"
WATER CLOSET (FLUSH TANK)	1/2"	-	4"	2"

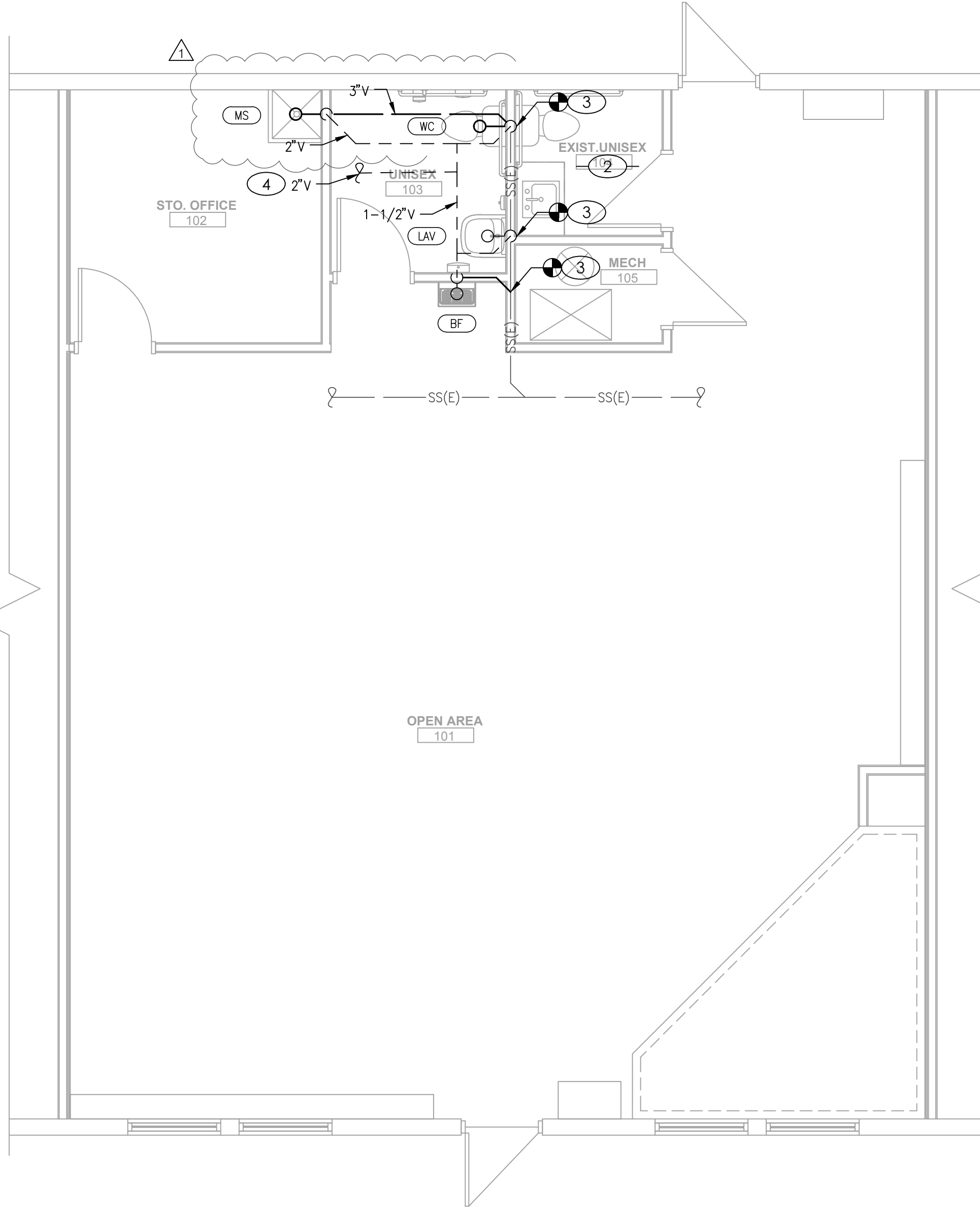
NOTE: PIPE SIZES SHOWN ARE MINIMUM. MINIMUM SANITARY SIZE UNDERGROUND IS 2".



WATER PLAN

SCALE : 1/4" = 1'-0"

2



WASTE & VENT PLAN

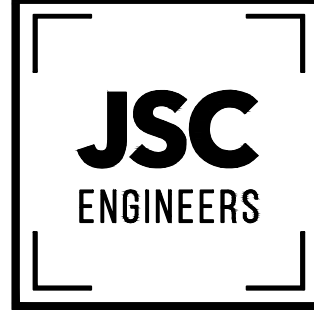
SCALE : 1/4" = 1'-0"

1

KEYED PLAN NOTES

- CONNECT NEW 1/2" CW AND 1/2" HW PIPING TO DOMESTIC WATER PIPING SERVING EXISTING RESTROOM. FIELD VERIFY EXACT LOCATION PRIOR TO START OF WORK.
- NO WORK IN EXISTING RESTROOM. FIXTURES SHOWN FOR REFERENCE ONLY.
- CONNECT NEW SANITARY SEWER LINE TO SANITARY SEWER SERVING EXISTING RESTROOM. FIELD VERIFY EXACT LOCATION, SIZE, FLOW DIRECTION AND ADEQUATE INVERT DEPTH PRIOR TO START OF WORK. CAMERA EXISTING SEWER PIPING AS REQUIRED IN ORDER TO LOCATE CONNECTION POINT.
- CONNECT NEW 2" V TO EXISTING 2" OR GREATER VENT OVERHEAD SERVING EXISTING RESTROOM. FIELD VERIFY LOCATION PRIOR TO START OF WORK.
- 1/2" CW DOWN IN WALL TO WATER CLOSET.
- 1/2" HW AND 1/2" CW DOWN IN WALL TO LAVATORY. PROVIDE THERMOSTATIC MIXING VALVE EQUAL TO LEONARD MODEL 170. SET HOT WATER SUPPLY WATER TEMPERATURE TO 110°F.
- 1/2" CW DOWN IN WALL TO BOTTLE FILLING STATION.

MEP ENGINEER



MO COA NO. 2012008786 / KS COA NO. E-2818
1925 CENTRAL STREET, SUITE 201
KANSAS CITY, MO 64108
phone: (816) 272-5289
email: jprother@jscengineers.com

JAZZERCISE LSMO

618 SW 3RD STREET, SUITE E
LEE'S SUMMIT, MO 64063

REVISION
DATES:

△ 01.13.23 PLAN CHECK



PROFESSIONAL SEAL

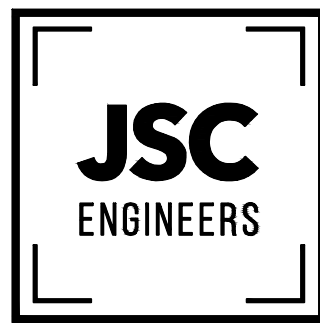
P101

ISSUE DATE: 01.13.23

JSC PROJECT #: 22-339

PLUMBING PLANS,
SPECS & SCHEDULES

MEP ENGINEER



MO COA NO. 201200876 / KS COA NO. 6-2818
1925 CENTRAL STREET, SUITE 201
KANSAS CITY, MO 64108
phone: (816) 272-5289
email: jsc@jscengineers.com

JAZZERCISE LSMO

618 SW 3RD STREET, SUITE E
LEE'S SUMMIT, MO 64063

REVISION DATES:

01-13-2023 PLANCHHECK



PROFESSIONAL SEAL

E101

ISSUE DATE: 01.13.23

JSC PROJECT #: 22-339

ELECTRICAL PLANS

ELECTRICAL SPECIFICATIONS

PART I - GENERAL

A. CONDITIONS

- FURNISH AND INSTALL A COMPLETELY WIRED AND OPERATIONAL ELECTRICAL SYSTEM AS SHOWN ON THE DRAWINGS AND SPECIFIED HEREIN, INCLUDING BUT NOT LIMITED TO, THESE MAJOR ITEMS.
 - LIGHTING FIXTURES AS INDICATED AND SPECIFIED ON THE PLANS.
 - ELECTRICAL PANELS, SERVICE, CONDUIT, WIRING, ETC., FOR ALL OUTLETS AND EQUIPMENT.
 - TELEPHONE, TELEVISION, AND FIRE ALARM. OUTLETS AND CONDUIT AS INDICATED.
- OBTAIN AND REVIEW ALL OTHER DRAWINGS INCLUDING REFLECTED CEILING PLAN, INTERIOR AND EXTERIOR ELEVATIONS, FURNITURE PLANS AND ALL MILL WORK DRAWINGS. COORDINATE INSTALLATION OF ALL ELECTRICAL DEVICES AND EQUIPMENT PRIOR TO ROUGH-IN.
- OBTAIN SUBMITTAL AND SHOP DRAWINGS FROM OTHER TRADES AND EQUIPMENT TO COORDINATE INSTALLATION ACCORDINGLY.
- INSTALLATION SHALL COMPLY WITH ALL CURRENT APPLICABLE CODES AND GOVERNING AGENCIES HAVING JURISDICTION.
- FIRE ALARM SYSTEM, IF REQUIRED PER IBC, SHALL BE DESIGN-BUILD BY OWNER'S/GC'S FIRE ALARM CONTRACTOR. DESIGN SHALL BE IN ACCORDANCE WITH NFPA 72. FIRE ALARM CONTRACTOR SHALL SUBMIT STAMPED DRAWINGS TO AHJ FOR REVIEW AND APPROVAL. FIRE ALARM CONTRACTOR IS RESPONSIBLE FOR TESTING AND VERIFYING THAT THE AUDIBILITY OF THE FIRE ALARM SYSTEM MEETS A MINIMUM OF 15 DBA ABOVE AMBIENT NOISE LEVELS. ADD HORNS WHERE REQUIRED TO MAINTAIN MINIMUM LEVELS.
- PROVIDE FIRE STOP ON ALL PIPING THAT PENETRATES RATED WALLS. METHOD OF FIRE STOP SHALL MEET WALL RATING. REFER TO ARCHITECTURAL DRAWINGS FOR LOCATION OF FIRE RATED WALLS. THIS CONTRACTOR SHALL PROVIDE FIRE RATED ENCLOSURES AROUND ALL ROUGH-IN BOXES, PANELS, ETC. THAT ARE LOCATED IN FIRE RATED WALLS AND SHALL FIRE CAULK ALL OPENINGS IN RATED ASSEMBLIES.

C. CODES, REGULATIONS, AND STANDARDS

- THE INSTALLATION SHALL COMPLY WITH APPLICABLE LOCAL AND STATE CODES AND ORDINANCES, WITH THE REGULATIONS OF THE LATEST EDITION OF THE NATIONAL ELECTRIC CODE AND WITH THE REQUIREMENTS OF THE POWER, TELEPHONE, AND CATV COMPANIES FURNISHING SERVICES TO THIS INSTALLATION.
- THE LATEST EDITIONS OF THE FOLLOWING INDUSTRY STANDARDS, SPECIFICATIONS, AND CODES ARE MINIMUM REQUIREMENTS:
 - THE NATIONAL ELECTRICAL MANUFACTURER'S ASSOCIATION STANDARDS.
 - THE NATIONAL ELECTRICAL CODE, INCLUDING LOCAL AMENDMENTS.
 - C. UNDERWRITER LABORATORIES INCORPORATED STANDARDS.
 - AMERICAN NATIONAL STANDARDS INSTITUTE.
 - INTERNATIONAL BUILDING CODE.

D. INSPECTION OF SITE

- PRIOR TO SUBMITTING A BID FOR ELECTRICAL WORK, THE CONTRACTOR SHALL VISIT THE SITE OF THE PROPOSED CONSTRUCTION AND SHALL THOROUGHLY ACQUAINT HIMSELF WITH EXISTING UTILITIES, AND WORKING CONDITIONS TO BE ENCOUNTERED, ETC. ALLOWANCE WILL NOT BE MADE FOR NONCOMPLIANCE WITH THIS CONDITION AFTER BIDDING.
- ELECTRICAL INSTALLATION SHALL MEET THE EXISTING CONDITIONS.

H. DRAWINGS

- THE DRAWINGS INDICATE THE GENERAL ARRANGEMENT AND LOCATIONS OF THE ELECTRICAL WORK DATA PRESENTED ON THESE DRAWINGS ARE AS ACCURATE AS PLANNING CAN DETERMINE, BUT FIELD VERIFICATION OF ALL DIMENSIONS, LOCATIONS, LEVELS, ETC., TO SUIT FIELD CONDITIONS IS REQUIRED. REVIEW ALL ARCHITECTURAL, STRUCTURAL, AND MECHANICAL DRAWINGS AND ADJUST ALL WORK TO MEET THE REQUIREMENTS OF CONDITIONS SHOWN. THE ARCHITECTURAL DRAWINGS SHALL TAKE PRECEDENCE OVER ALL OTHER DRAWINGS. DISCREPANCIES BETWEEN DIFFERENT PLANS, OR BETWEEN DRAWINGS AND SPECIFICATIONS, OR REGULATIONS AND CODES GOVERNING THE INSTALLATION SHALL BE BROUGHT TO THE ATTENTION OF THE ENGINEER IN WRITING BEFORE THE DATE OF BID OPENING. IF DISCREPANCIES ARE NOT REPORTED, THE CONTRACTOR SHALL BID THE GREATER QUANTITY OR BETTER QUALITY, AND APPROPRIATE ADJUSTMENTS WILL BE MADE AFTER CONTRACT AWARD. CONTRACTOR SHALL BE RESPONSIBLE TO FIELD MEASURE AND CONFIRM MOUNTING HEIGHTS AND LOCATION OF ELECTRICAL EQUIPMENT WITH RESPECT TO COUNTERS, RADIATION, ETC. DO NOT SCALE DISTANCES OFF THE ELECTRICAL DRAWINGS, USE ACTUAL BUILDING DIMENSIONS.

I. COOPERATION WITH OTHER CONTRACTORS

- COOPERATE WITH THE OTHER TRADES SO THAT THE INSTALLATION OF THE ELECTRICAL OUTLETS AND EQUIPMENT WILL BE PROPERLY COORDINATED. CONDUIT, LIGHTING FIXTURES, AND OTHER EQUIPMENT LOCATIONS SHALL BE VERIFIED WITH OTHER TRADES TO AVOID CONFLICT WITH THE PIPING, DUCTWORK, STEEL, BEAMS, OR OTHER OBSTRUCTIONS.
- CAREFULLY VERIFY THE LOCATIONS OF THE OUTLET BOXES AND DETERMINE THAT THEY HAVE NOT BEEN DISTURBED DURING THE INSTALLATION OF MATERIALS OF OTHER TRADES.
- COORDINATE THE LOCATION OF THE TRENCHES AND CONDUITS FOR ELECTRICAL AND TELEPHONE UTILITY SERVICES WITH THE GENERAL CONTRACTOR.
- COORDINATE HVAC AND PLUMBING EQUIPMENT CONNECTION REQUIREMENTS WITH HVAC AND PLUMBING CONTRACTORS.

PART II - PRODUCTS AND EXECUTION

A. MATERIALS

- ALL MATERIALS SHALL BE NEW AND OF QUALITY AS SPECIFIED ON THE PLANS OR SPECIFICATIONS AND MUST CARRY THE UNDERWRITER'S LABORATORIES APPROVAL COVERING THE PURPOSE FOR WHICH THEY ARE USED, IN ADDITION TO MEETING ALL REQUIREMENTS OF THE CURRENT APPLICABLE CODES AND REGULATIONS.

C. SYSTEM GROUNDING

- GROUNDING SHALL COMPLY WITH REQUIREMENTS OF ARTICLE 250. ALL EXPOSED NONCURRENT CARRYING METALLIC PARTS OF ELECTRICAL EQUIPMENT, METALLIC RACEWAY SYSTEMS, METALLIC CABLE ARMOR, GROUNDING CONDUCTOR OF NONMETALLIC SHEATHED CABLES, GROUNDING CONDUCTOR IN NONMETALLIC RACEWAYS, AND GROUNDED CONDUCTORS OF THE WIRING SYSTEM SHALL BE GROUNDED.

D. WIRE

- CONDUCTOR SIZES SHOWN ON THE DRAWINGS ARE BASED ON COPPER WIRE. UNLESS OTHERWISE SPECIFIED, ALL WIRE SHALL BE TYPE XHHW OR SE FOR FEEDERS OR BRANCH CIRCUITS LARGER THAN 4 AWG, TYPE THHN/THWN INSULATION FOR FEEDERS AND BRANCH CIRCUITS 4 AWG AND SMALLER. ALL BRANCH CIRCUIT WIRING SHALL BE COPPER.
- THE WIRES SHALL BE MARKED WITH COLOR TO SIMPLIFY CIRCUIT IDENTIFICATION. UNLESS OTHERWISE REQUIRED BY LOCAL ORDINANCES GROUND WIRES SHALL BE GREEN, NEUTRAL WIRES SHALL BE 120V-WHITE, AND LIVE WIRES 208Y/120V AND 120/240 SHALL BE BLACK (PHASE A), RED (PHASE B), AND BLUE (PHASE C). CIRCUIT SHALL BE LABELED IN EACH J-BOX.
- ALL CONDUCTORS SHALL BE RATED 600 VOLT.
- PROVIDE SOLID CONDUCTOR FOR 12 AWG AND SMALLER.
- NO WIRE SHALL BE INSTALLED IN THE CONDUIT SYSTEM UNTIL THE CONDUIT SYSTEM IS COMPLETE. USE MINERALAC NO. 100 OR EQUIVALENT AS A LUBRICANT TO FACILITATE THE INSTALLATION OF THE CONDUCTORS IN THE CONDUIT SYSTEM.
- MC CABLE WITH COPPER CONDUCTORS AND GROUND WIRE MAY BE USED WHERE PERMITTED.

E. CONDUIT

- ALL WIRING SHALL BE INSTALLED IN LISTED METALLIC CONDUIT EXCEPT AS PERMITTED IN OTHER SECTIONS. RGS, WITH A 20 MIL PVC COATING WILL BE USED WHEN IN CONTACT WITH EARTH. IMC MAY BE USED IN INDOOR LOCATIONS NOT IN CONTACT WITH THE EARTH. ENT MAY BE USED IN INDOOR LOCATIONS NOT IN CONTACT WITH EARTH, NOT IN CONCRETE SLABS OR WALLS AND NOT SUBJECT TO DAMAGE. PVC MAY BE USED IN OR BELOW CONCRETE AND DIRECT BURIED IN EARTH. FLEXIBLE STEEL CONDUIT SHALL BE USED FOR INDOOR FINAL CONNECTIONS TO EQUIPMENT IN LENGTHS NOT TO EXCEED 72". LIQUID-TIGHT FLEXIBLE STEEL CONDUIT SHALL BE FOR OUTDOOR FINAL CONNECTIONS TO EQUIPMENT NOT TO EXCEED 48".
- WHERE CONDUIT ENTERS OUTLET BOXES, FIXTURES OR CABINETS, FIRMLY FASTEN WITH STEEL SET SCREW, COMPRESSION CONNECTORS, OR DOUBLE LOCKNUTS FOR GRC. ALL CONNECTIONS SHALL HAVE BUSHINGS OR INSULATED THROAT CONNECTORS. FIRMLY FASTEN CONDUIT TO THE BUILDING CONSTRUCTION. RUN EXPOSED CONDUIT PARALLEL TO THE BUILDING LINES, SUPPORTED BY APPROPRIATE HANGERS (UNISTRUT, T & B OR APPLETON, OR EQUAL).

- FITTINGS AND CONDUIT BODIES SHALL BE STEEL. DIECAST FITTINGS ARE NOT ACCEPTABLE.
- CONDUIT SIZES SHALL BE AS REQUIRED BY CODE AND AS INDICATED OR SPECIFIED.
- WIRING, CONDUITS, AND OUTLETS SHALL BE CONCEALED WITH THE BUILDING STRUCTURE, EXCEPT THAT CERTAIN MOTOR AND LIGHTING FEEDER CONDUITS MAY BE RUN EXPOSED IN CERTAIN AREAS AS INDICATED ON THE DRAWINGS.
- CONDUIT PENETRATION THROUGH ROOF SHALL HAVE ROOF FLASHING WITH CAULK TYPE COUNTER FLASHING SLEEVE. INSTALLATION SHALL BE WATERTIGHT.
- CONDUITS SHALL BE ROUTED PARALLEL AND PERPENDICULAR TO THE STRUCTURE.

F. OUTLET, PULL, AND JUNCTION BOXES

- EACH SWITCH, LIGHT, RECEPTACLE OR OTHER OUTLET, INSTALLED IN RESIDENTIAL UNITS, SHALL BE PROVIDED WITH A CODE SIZED, PLASTIC OUTLET BOX. JUNCTION AND PULL BOXES SHALL BE CODE SIZED, PLASTIC OR METAL OUTLET BOX. ALL OTHER OUTLET BOXES SHALL BE STEEL
- BOXES INSTALLED IN POURED CEMENT FLOORS SHALL BE FLUSH TYPE CAST IRON OR STEEL WITH WATERTIGHT GASKETED COVERS. WHERE BOXES ARE INSTALLED IN FLOORS WITH TILE OR CARPET FLOOR COVERING, COVERS SHALL BE OF THE RECESSED TYPE TO ACCOMMODATE THE FLOOR COVERING.
- BOXES INSTALLED FOR THE ALARM, COMPUTER, AND SECURITY SYSTEM SHALL BE PROVIDED WITH APPROPRIATE COVER PLATES.
- BOXES FOR TELEPHONE, COMPUTER, T.V., FIRE ALARM, SECURITY, AND SIMILAR SYSTEMS SHALL BE MINIMUM 2-1/8" DEEP.

G. WIRING DEVICES

- WALL SWITCHES SHALL BE SPECIFICATION GRADE AC SILENT TYPE SWITCHES, 20A 120/277 VOLT.
- RECEPTACLES SHALL BE SPECIFICATION GRADE, DUPLEX TYPE, NEMAS-20R, 20 AMPERE, 120VOLT GROUNDED TYPE. SPECIAL APPLICATION RECEPTACLES SHALL BE INDICATED ON PLANS. MOUNT WITH THE GROUND DOWN.
- DEVICE PLATES SHALL BE EQUAL TO SIERRA SMOOTH-LINE PLASTIC WALL PLATES. COLOR SHALL BE WHITE, UNLESS OTHERWISE NOTED.
- RECEPTACLES IN OUTDOOR AND WET LOCATIONS SHALL BE INSTALLED WITH A HINGED OUTLET COVER/ENCLOSURE CLEARLY MARKED AND U.L. LISTED SUITABLE FOR WET LOCATIONS WHILE IN USE, EQUAL TO TAYMAC SPECIFICATION GRADE.

J. PANELBOARDS

- CIRCUIT BREAKER TYPE AS INDICATED ON DRAWINGS. UNLESS INDICATED OTHERWISE, ALL PANELS SHALL HAVE PANEL HAVE PANEL BOARD TYPE CONSTRUCTION WITH BOLT-ON CIRCUIT BREAKERS FOR 3Ø PANELS
- MANUFACTURERS SHALL BE GENERAL ELECTRIC, SQUARE D, SIEMENS, CUTLER-HAMMER WITH VOLTAGE, SIZES, AND RATINGS AS INDICATED ON DRAWINGS.
- THE CIRCUIT BREAKERS SHALL BE OPERABLE IN ANY POSITION AND BE REMOVABLE FROM THE FRONT OF THE PANEL BOARD WITHOUT DISTURBING THE ADJACENT UNITS. BRANCH BREAKERS SHALL BE OF SUCH DESIGN THAT COMBINATION OF SINGLE-POLE, DOUBLE-POLE, AND THREE-POLE BREAKERS CAN BE ASSEMBLED ON THE SAME PANEL. EACH BRANCH CIRCUIT SHALL BE CLEARLY NUMBERED. BRANCH AND MAIN TERMINALS SHALL BE SOLDERLESS TYPE. HANDLE TIES TO FORM MULTI-POLE BREAKERS NOT ACCEPTABLE.

L. LIGHTING FIXTURES

- PROVIDE ALL LIGHTING FIXTURES, WIRED AND CONNECTED. THE DRAWINGS INDICATE THE FIXTURES FOR EACH LOCATION. PROVIDE LAMPS FOR ALL FIXTURES. THE LAMPS SHALL BE BY THE SAME MANUFACTURER. VERIFY CEILING CONSTRUCTION BEFORE ORDERING RECESSED UNITS. PROVIDE PLASTER FRAMES AND HANGERS AS REQUIRED. CEILING CONSTRUCTION, ARCHITECTURAL ACCESSORIES, VOLTAGE, AND BALLASTS TO MEET THE EXISTING CEILING CONDITION.

M. LIGHTING CONTROL

- FURNISH AND INSTALL TIME SWITCHES, PHOTOCELLS, CONTRACTORS AND FULL LIGHTING CONTROL SYSTEMS AS REQUIRED FOR LIGHTING CONTROLS INDICATED ON THE DRAWINGS.
- TIME SWITCHES SHALL BE EQUAL TO PARAGON, GENERAL ELECTRIC, TORK, OR INTERMATIC AND SHALL HAVE SIZE AND NUMBER OF POLES AS REQUIRED.
- PHOTOCELLS SHALL BE EQUAL TO TORK OR INTERMATIC WITH VOLTAGE AS INDICATED.

O. GUARANTEE

- GUARANTEE ALL MATERIAL FURNISHED AND ALL WORKMANSHIP PERFORMED FOR A PERIOD OF ONE YEAR FROM DATE OF FINAL ACCEPTANCE OF WORK. ANY DEFECTS DEVELOPING WITHIN THIS PERIOD, TRACEABLE TO MATERIAL FURNISHED AS A PART OF THIS SECTION OR WORKMANSHIP PERFORMED HEREUNDER, SHALL BE MADE GOOD AT NO EXPENSE TO THE OWNER.

LOADCENTER: PA(EXISTING)

BUS AMPS: 100A
MAIN SIZE/TYPE: MLO
VOLTS/PHASE: 120/240V, 1PH, 3W
SECTION: 1

FED FROM:

UTILITY
AIC RATING: 10000 FULLY RATED
SERVES: JAZZERCISE
MOUNTING: SURFACE
LOCATION: MECH

LINE-SIDE LUGS: MECHANICAL
EQUIPMENT GROUND BUS

CKT NO.	DESCRIPTION	VOLTAMPS/PHASE			WIRING	BKR NO.	P	F	BKR AMP	WIRING	BKR AMP	VOLTAMPS/PHASE			DESCRIPTION	CKT NO.
		A	B									A	B			
1	UNUSABLE SPACE						1	1							UNUSABLE SPACE	2
3	UNUSABLE SPACE						1	1							UNUSABLE SPACE	4
6	COMPUTER RECEPT	500			EX	20	1	1	20/20	EX	500				AIR COMPRESSOR	6
7	LTG - GENERAL		800		EX	20	1	1	20	12		500			MOTORIZED DAMPER	8
9	PLUGS	500			EX	20	1	1	20	12	180				RCPT - CHECKIN	10
11	PLUGS		500		EX	20	1	1	20	12		180			RCPT - STAGE AV EQUIPMENT	12
13	LIGHTS	500			EX	20	1	1	20	EX	500				FIRE & EMERGENCY	14
15	PLUGS		500		EX	20	1	2	40	EX		3,000			AIR CONDITIONER	16
17	UNLABELED	500			EX	20	1									
19	TELEPHONE PLUG		500		EX	20	1	1	15	EX		500			UNLABELED	20
21	GENERAL PLUGS	500			EX	20	1	1	20	12	800				RCPT - FANS	22
23	FURNACE		500		EX	15/15	1	1	20	12		200			(GFI) RCPT - BOTTLE FILLER	24
SUBTOTAL		2,500	2,800									4,980	4,380		SUBTOTAL	
TOTAL PHASE A - VA		7,480			LOAD				CONN VA	DF	LOAD				CONN VA	DF
AMPS		62			COOLING					1.00	REFRIG					1.00
TOTAL PHASE B - VA		7,180			HEATING					0	SIGN/DISP					1.25
AMPS		60			LIGHTING				800	1.25	KITCHEN					1.00
TOTAL PNLBD - VA		14,860			RECEPTACLES				1,360	1.0/5	EXISTING				12,500	1.00
AMPS		61			MOTORS					1.00	LRG MOTOR					1.25
					SUPP HEAT					1.00	SHOW/WNDW					14,860 VA
					MISC EQUIP					1.00	LTG TRACK					82 A

PANELBOARD NOTES

DESCRIPTION IN ITALICS = EXISTING LABELED LOAD TO REMAIN.
(GFI) = GFCI-TYPE BREAKER

ELECTRIC SERVICE SINGLE LINE DIAGRAM IS EXISTING TO REMAIN. NO MODIFICATIONS ARE BEING MADE TO THE SEQUENCE OF ELECTRICAL SERVICE DISTRIBUTION EQUIPMENT IN THIS SCOPE.

ELECTRICAL LIGHTING SCHEDULE (OR EQUAL. VERIFY ALL SELECTIONS AND FINISHES WITH OWNER AND ARCHITECT PRIOR TO ORDERING).

FIXTURE TYPE	MANUFACTURER		VOLT AMPS	MOUNTING	LAMP TYPE	REMARKS	VOLT
	NAME	SERIES					
A	VISCOR	LRTA2X4-LED835049LUNV-802	35	RECESSED	INCLUDED LED	2'X4' DIMMABLE LED TROFFER- 3500K - 4900LM	MVOLT
TR	ELCO LIGHTING	ET62630DW EP008W	13/FIXT	TRACK	INCLUDED LED	LED SINGLE CIRCUIT TRACK & FIXTURE - CONFIRM SPECIFICATION, FIXTURE QUANTITY, AND FINISH WITH OWNER	120
⊗	EMERGH-LITE	LUX-RAY SERIES	5	SURFACE	INCLUDED LED	OUTDOOR EMERGENCY REMOTE EGRESS LIGHTING UNIT - BLACK	MVOLT
⊗	EMERGH-LITE	PREMIER SERIES	5	SURFACE	INCLUDED LED	EMERGENCY EXIT EGRESS COMBO LIGHTING UNIT WITH RED FACE EXIT SIGN AND 90 MIN. BATTERY PACK	MVOLT
⊗	EMERGH-LITE	THERMOPLASTIC COMPACT BATTERY SERIES	5	SURFACE	INCLUDED LED	EMERGENCY LIGHTING UNIT WITH 90 MIN. BATTERY PACK	MVOLT

SYMBOLS LEGEND

NOTE: THIS IS A MASTER LEGEND AND NOT ALL SYMBOLS, ETC., ARE NECESSARILY USED ON THE DRAWINGS.

LIGHTING FIXTURES - SYMBOL/LETTER INDICATES LIGHT FIXTURE AS INDICATED ON FIXTURE SCHEDULE

- LED FIXTURE (SEE LIGHTING FIXTURE SCHEDULE)
- FIXTURE WITH EMERGENCY BATTERY DRIVER UNIT
- TRACK LIGHT
- DOWNLIGHT FIXTURE WITH EMERGENCY BATTERY DRIVER UNIT
- WALL MOUNTED FIXTURE WITH EMERGENCY BATTERY DRIVER UNIT
- PENDANT MOUNTED FIXTURE WITH EMERGENCY BATTERY DRIVER UNIT
- DOWNLIGHT FIXTURE
- WALL MOUNTED FIXTURE
- PENDANT MOUNTED FIXTURE
- WALL WASHER
- SINGLE FACE EXIT SIGN - UNIVERSAL MOUNTED
- SINGLE FACE EXIT SIGN W/ DIRECTIONAL ARROWS - UNIVERSAL MTD
- DOUBLE FACE EXIT SIGN W/ DIRECTIONAL ARROWS - UNIVERSAL MTD
- DUAL HEADED EMERGENCY UNIT
- COMBO DUAL HEADED EMERGENCY AND EXIT SIGN UNIT

LIGHTING CONTROLS

- S SINGLE POLE SWITCH @ +48" UNLESS NOTED
- Sabc SWITCH BANK @ +48" UNLESS NOTED. LOWER CASE LETTER INDICATES FIXTURE CONTROLLED.
- S3 3-WAY SWITCH @ +48" UNLESS NOTED
- S4 4-WAY SWITCH @ +48" UNLESS NOTED
- SD DIMMER SWITCH - SIZE AS REQUIRED @ +48" UNLESS NOTED
- SM MANUAL MOTOR STARTER
- Sos WALL SWITCH WITH OCCUPANCY SENSOR. DIGITAL LOW VOLTAGE WALL SWITCH. SWITCH @ +48" UNLESS NOTED.
- SD TWO BUTTON DIGITAL LOW VOLTAGE WALL SWITCH. PROVIDES ON/OFF/O-10V DIMMING. SWITCH @ +48" UNLESS NOTED. PROVIDE EXTRA CONTROL CABLES NEEDED TO FIXTURE CONTROLLED.
- ⊗ LIGHTING CONTROLS CEILING MOUNT OCCUPANCY SENSOR
- ⊗ LIGHTING CONTROLS POWER PACK
- ⊗ LIGHTING CONTACTOR
- ⊗ TIMECLOCK

POWER DISTRIBUTION

- 120/240V, 1 PHASE, 3 WIRE PANELBOARD, UNO
- TRANSFORMER

POWER DEVICES

- SPECIAL HEAVY DUTY RECEPTACLE - SIZE AS NOTED. @ +18" UNLESS NOTED
- 1/2 SWITCHED RECEPTACLE @ +18" UNLESS NOTED
- FIRE RATED POKE THRU WITH TYPE INDICATED
- FLUSH FLOOR BOX WITH TYPE INDICATED
- SINGLE RECEPTACLE @ +18" UNLESS NOTED
- DUPLEX RECEPTACLE @ +18" UNLESS NOTED
- DOUBLE DUPLEX RECEPTACLE @ +18" UNLESS NOTED
- DUPLEX RECEPTACLE INSTALLED ABOVE COUNTERTOP
- GFCI-RATED DUPLEX RECEPTACLE
- ARC FAULT RATED DUPLEX RECEPTACLE
- TAMPER RESISTANT RATED DUPLEX RECEPTACLE
- DUPLEX RECEPTACLE WITH WEATHERPROOF COVER/PLATE @ 18" UNLESS NOTED
- JUNCTION BOX
- DISCONNECT SWITCH - SIZE AND TYPE NOTED
- COMBINATION FUSED STARTER DISCONNECT SWITCH FUSE SIZE AS INDICATED, STARTER SIZE "1"

AUXILIARY SYSTEMS

- MECHANICAL EQUIP. CONNECTION, SEE SCHED. ON MECH. PLAN
- TELEPHONE OUTLET @ +18" UNLESS NOTED
- DATA OUTLET @ +18" UNLESS NOTED
- COMBINATION TELEPHONE/DATA OUTLET @ +18" UNLESS NOTED
- TELEVISION OUTLET @ +60" UNLESS NOTED
- SMOKE DETECTOR
- HEAT DETECTOR
- DUCT SMOKE DETECTOR
- REMOTE TEST STATION WITH INDICATING LIGHT. MOUNT AT 48" AFF UNO.
- AUXILIARY SYSTEM TERMINAL CABINET

GENERAL

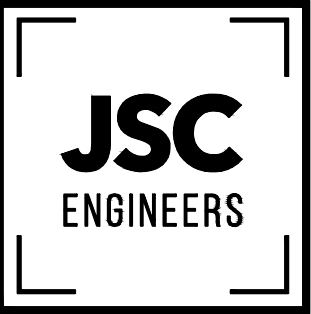
- CONDUIT RUN CONCEALED IN WALL OR ABOVE CEILING
- CONDUIT RUN BELOW FLOOR OR GRADE

HOMERUN TO PANELBOARD, INFORMATION AT ARROWS ARE CIRCUIT NUMBERS AND PANELBOARD FOR TERMINATION. REFER TO ASSOCIATED NOTE FOR BRANCH CIRCUIT CONDUCTOR SIZES.

INDICATES 1/2" CONDUIT CONCEALED IN CEILING OR WALL WITH (3) CONDUCTORS. (1) PHASE, (1) NEUTRAL AND (1) GROUND WIRE. ALL ARE #12 AWG UNLESS NOTED OTHERWISE.

(E) OR ETR: DENOTES EXISTING ITEM/EQUIPMENT TO REMAIN

MEP ENGINEER



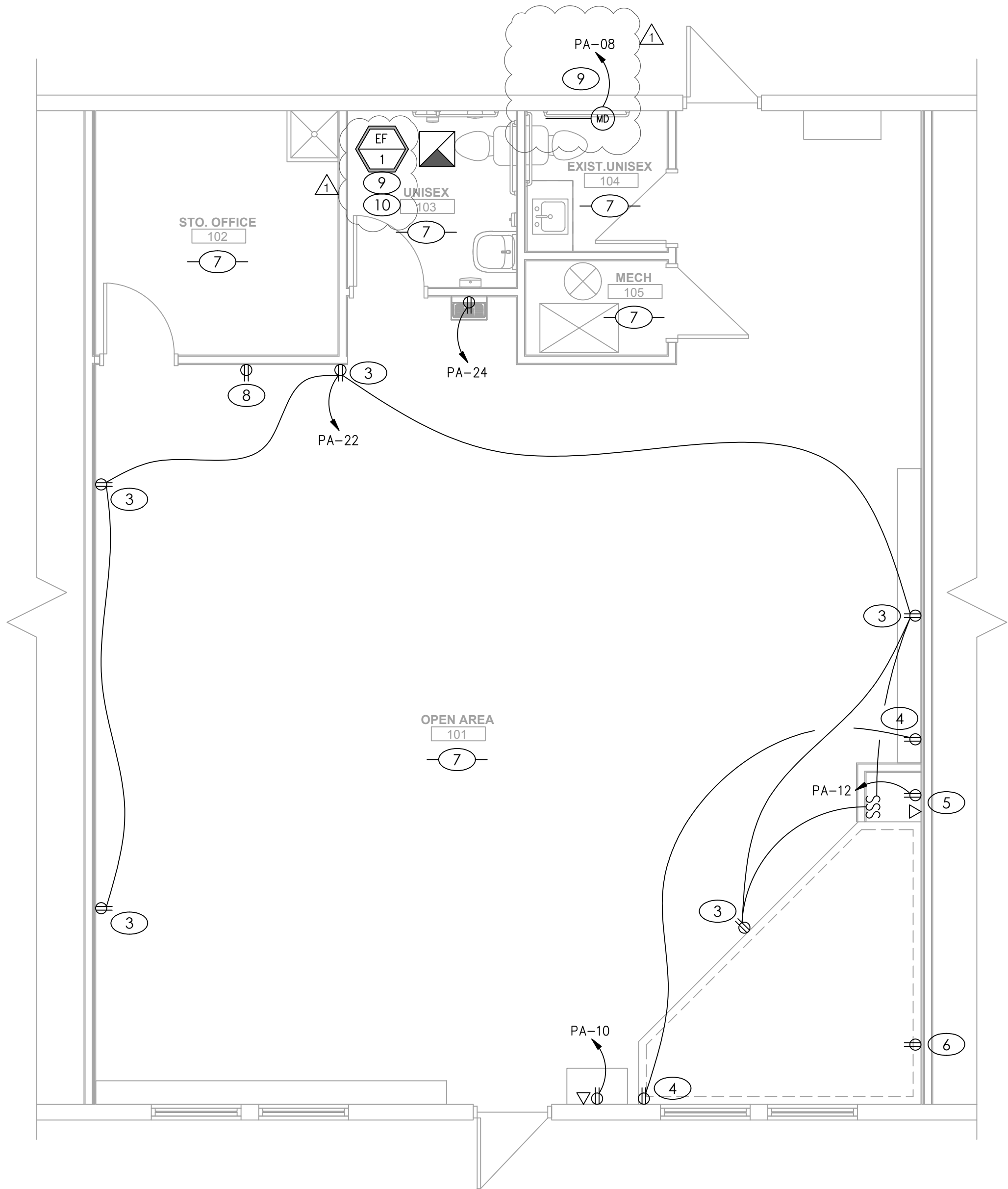
MO COA NO. 201200786 / KS COA NO. E-2818
1925 CENTRAL STREET, SUITE 201
KANSAS CITY, MO 64109
phone: (816) 272-5289
email: jprother@jscengineers.com

GENERAL NOTES

- REFER TO LIGHTING FIXTURE SCHEDULE FOR LIGHT FIXTURE TYPES AND REQUIREMENTS.
- CONNECT ALL EXIT SIGNS AND EMERGENCY LIGHTING UNITS TO THE INDICATED CIRCUIT WITH A SEPARATE AND UN-SWITCHED CONDUCTOR BYPASSING ALL CONTROLS AND CONTACTORS. REFER TO MANUFACTURER'S WRITTEN INSTRUCTIONS FOR PROPER INSTALLATION AND TESTING.
- CONTRACTOR SHALL BE RESPONSIBLE FOR ENSURING THAT COORDINATION AND CONFLICT ISSUES BE RESOLVED PRIOR TO INSTALLATION OF LIGHT FIXTURES.
- ROUTE ALL EXPOSED, RIGID CONDUIT TIGHT TO STRUCTURE, PARALLEL TO BUILDING LINES AND IN UNISTRUT CABLE/PIPE TRAY WHERE POSSIBLE. COORDINATE CONDUIT ROUTING AND INSTALLATION WITH OTHER TRADES PRIOR TO ROUGH-IN. SUPPORT CONDUIT FROM STRUCTURE NOT ROOF DECK. MAINTAIN 2" MIN SPACING FROM BOTTOM OF ROOF DECK TO PREVENT ROOFING SCREWS FROM PENETRATING CONDUITS.
- THROUGH WIRING OF RECESSED LIGHT FIXTURES, IN SUSPENDED CEILINGS, IS NOT PERMITTED. CONNECT EACH LIGHT FIXTURE BY A WHIP TO A JUNCTION BOX. PROVIDE CABLE WHIPS OF SUFFICIENT LENGTH TO ALLOW FOR RELOCATING EACH LIGHT FIXTURE WITHIN A 5-FOOT RADIUS OF ITS INSTALLED LOCATION, BUT NOT EXCEEDING 6 FEET IN UNSUPPORTED LENGTH.

KEYED PLAN NOTES

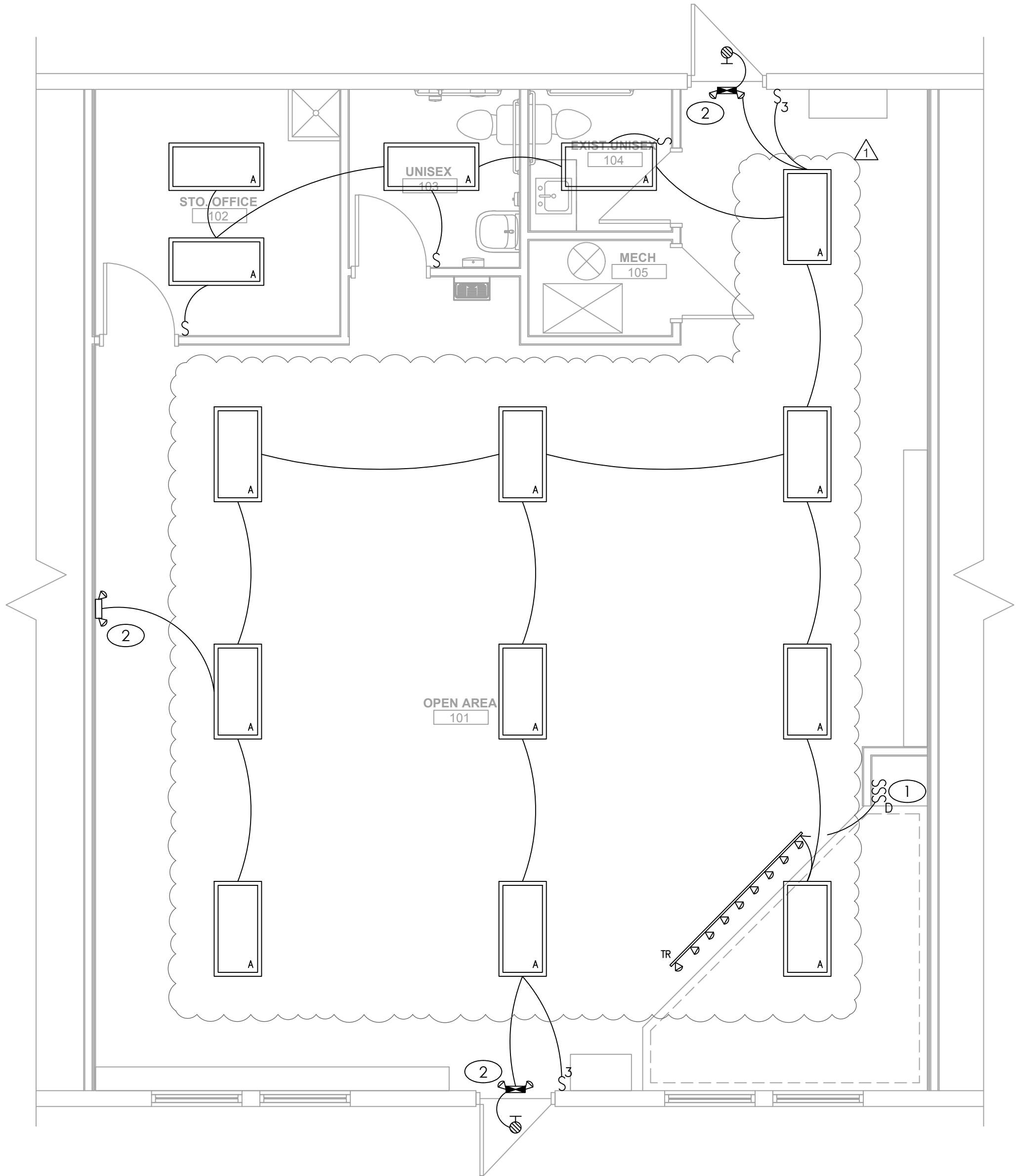
- THREE-GANG SWITCH. (1) FOR TRACK LIGHTING, (1) FOR OPEN AREA FANS & (1) FOR STAGE FAN. COORDINATE DIMMING SWITCH STYLE WITH ASSOCIATED TRACK FIXTURE. COORDINATE EXACT GANGED SWITCH LOCATION WITH OWNER PRIOR TO CONSTRUCTION.
- MAKE CONNECTION TO EMERGENCY/EXIT LIGHT VIA UNSWITCHED HOT CONDUCTOR.
- RECEPTACLE FOR OWNER-SUPPLIED FAN. COORDINATE EXACT LOCATION AND MOUNTING HEIGHT WITH OWNER PRIOR TO CONSTRUCTION.
- RECEPTACLE FOR OWNER-SUPPLIED SPEAKER. COORDINATE EXACT LOCATION AND MOUNTING HEIGHT WITH OWNER PRIOR TO CONSTRUCTION.
- RECEPTACLE FOR OWNER-SUPPLIED AUDIO-VISUAL EQUIPMENT. COORDINATE EXACT LOCATION AND MOUNTING HEIGHT WITH OWNER PRIOR TO CONSTRUCTION.
- RELOCATE EXISTING RECEPTACLE TO 18" ABOVE PLATFORM LEVEL.
- EXISTING POWER/DATA DEVICES IN THIS ROOM ARE TO REMAIN UNLESS NOTED OTHERWISE ON DEVICE.
- CONNECT NEW RECEPTACLE TO CIRCUIT SERVING GENERAL CONVENIENCE RECEPTACLE CIRCUIT IN ROOM.
- MAKE CONNECTION TO DIVISION 22/23 EQUIPMENT ACCORDING TO MANUFACTURER'S LITERATURE AND NEC REQUIREMENTS.
- WIRE SO THAT ON/OFF OPERATION OF EXHAUST FAN COORDINATES WITH LIGHTING IN ROOM.



POWER PLAN

SCALE : 1/4" = 1'-0"

2



LIGHTING PLAN

SCALE : 1/4" = 1'-0"

1

JAZZERCISE LSMO

618 SW 3RD STREET, SUITE E
LEE'S SUMMIT, MO 64063

REVISION
DATES:

01.13.23 PLANCHECK



PROFESSIONAL SEAL

E101

ISSUE DATE: 01.13.23

JSC PROJECT #: 22-339

ELECTRICAL PLANS