

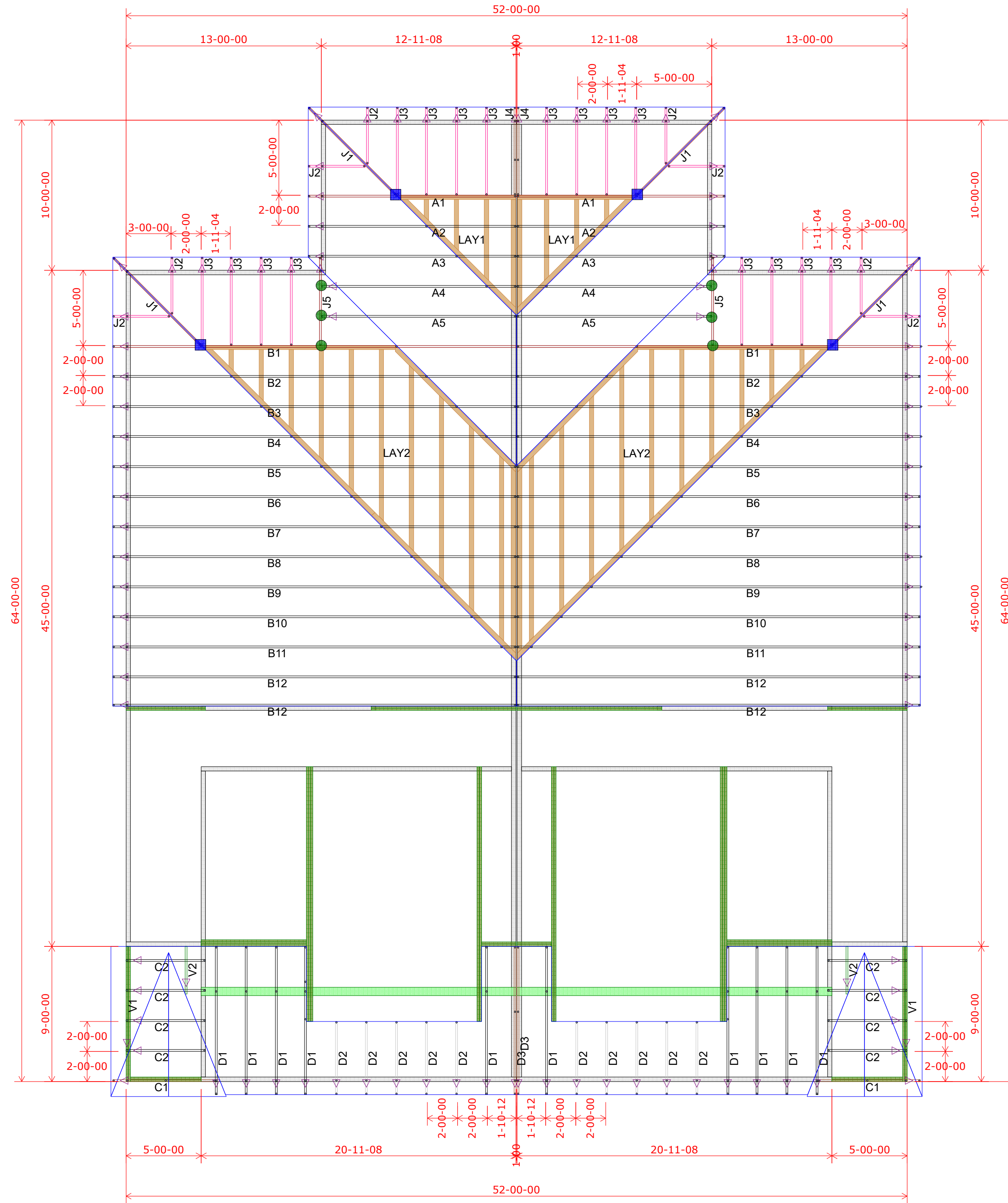
EVERSTEAD
SHOP DRAWINGS/SUBMITTAL REVIEW

SUBMITTAL WAS REVIEWED FOR DESIGN CONFORMITY AND GENERAL CONFORMANCE TO CONTRACT DOCUMENTS ONLY. THE CONTRACTOR IS RESPONSIBLE FOR CONFIRMING AND CORRELATING DIMENSIONS AT JOBSITE FOR TOLERANCE, CLEARANCE, QUANTITIES, FABRICATION, COORDINATION OF HIS OR HER WORK WITH OTHER TRADES, AND FULL COMPLIANCE WITH CONTRACT DOCUMENTS.

STATUS:
APPROVED
01/20/2023

REVIEWED BY:
CPD
ENGINEER, EVERSTEAD

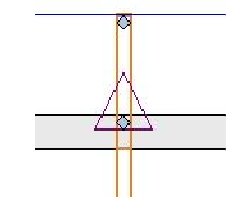
RELEASE FOR CONSTRUCTION
AS NOTED FOR PLAN REVIEW
DEVELOPMENT SERVICES
LEE'S SUMMIT, MISSOURI
01/23/2023



1st Floor Truss Layout
Scale: 3/16" = 1'

HANGER SCHEDULE	Quantity
LUS24	0
LUS26	0
HUS26	16
HHUS26-2	0
HGUS26-2	0
HGUS28-3	0
LTHJA26	0
TJC37	4
TJC57	0
HTS20	0

Triangle denotes the left end of the Truss as it appears on the Engineered Drawings provided.



Unless otherwise specified by Engineer Of Record, Wheeler Lumber, LLC recommends an uplift connection at each bearing point per the following:

# of Uplift	Connector
0 - 495:	(1) H2.5A
495 - 990:	(2) H2.5A
990 - 1245:	(1) HTS20

Installation per Simpson Strong-Tie guidelines.

For Reactions greater than 1245#, refer to EOR.

EVERSTEAD
SHOP DRAWINGS/SUBMITTAL REVIEW

SUBMITTAL WAS REVIEWED FOR DESIGN CONFORMITY AND GENERAL CONFORMANCE TO CONTRACT DOCUMENTS ONLY. THE CONTRACTOR IS RESPONSIBLE FOR CONFIRMING AND CORRELATING DIMENSIONS AT JOBSITE FOR TOLERANCE, CLEARANCE, QUANTITIES, FABRICATION, COORDINATION OF HIS OR HER WORK WITH OTHER TRADES, AND FULL COMPLIANCE WITH CONTRACT DOCUMENTS.

STATUS:
APPROVED
01/13/2023

REVIEWED BY:
CPD
ENGINEER, EVERSTEAD

Customer	Job Name	Job Site Address	City,	State	Designer	Date
Clover & Hive	Lot 50 Osage	2109/2111 SW Osage Dr	Lee's Summit	MO	Chuck Haspels (785) 746-4266	1/10/2023

Wheeler Lumber
1959 Old Hwy 50 NE
Waverly, KS 66871

