

EVERSTEAD
SHOP DRAWINGS/SUBMITTAL REVIEW

SUBMITTAL WAS REVIEWED FOR DESIGN CONFORMITY AND GENERAL CONFORMANCE TO CONTRACT DOCUMENTS ONLY. THE CONTRACTOR IS RESPONSIBLE FOR CONFIRMING AND CORRELATING DIMENSIONS AT JOBSITE FOR TOLERANCE, CLEARANCE, QUANTITIES, FABRICATION, COORDINATION OF HIS OR HER WORK WITH OTHER TRADES, AND FULL COMPLIANCE WITH CONTRACT DOCUMENTS.

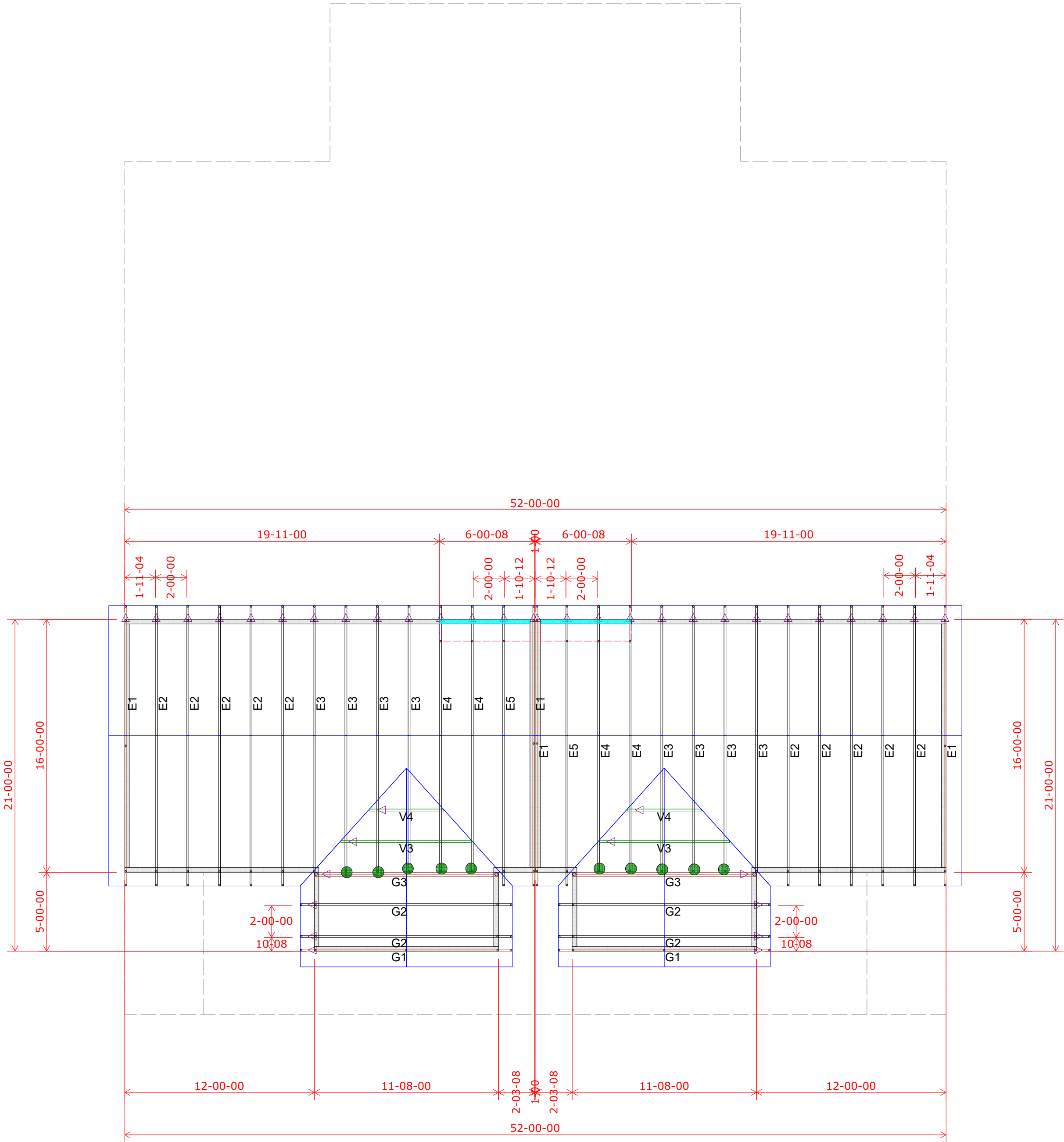
STATUS:

APPROVED

01/20/2023

REVIEWED BY:
CPD

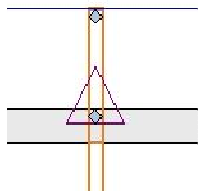
ENGINEER, EVERSTEAD



2nd Floor Truss Layout
Scale: 3/16" = 1'

	HANGER SCHEDULE	Quantity
●	LUS24	0
●	LUS26	0
●	HUS26	16
▲	HHUS26-2	0
▲	HGUS26-2	0
▲	HGUS28-3	0
■	LTHJA26	0
■	TJC37	4
■	TJC57	0
▲	HTS20	0

Triangle denotes the left end of the Truss as it appears on the Engineered Drawings provided.



Unless otherwise specified by Engineer Of Record, Wheeler Lumber, LLC recommends an uplift connection at each bearing point per the following:

of Uplift Connector
0 - 495: (1) H2.5A
495 - 990: (2) H2.5A
990 - 1245: (1) HTS20

Installation per Simpson Strong-Tie guidelines.

For Reactions greater than 1245#, refer to EOR.

RELEASE FOR CONSTRUCTION
AS NOTED FOR PLAN REVIEW
DEVELOPMENT SERVICES
LEE'S SUMMIT, MISSOURI
01/23/2023

EVERSTEAD
SHOP DRAWINGS/SUBMITTAL REVIEW

SUBMITTAL WAS REVIEWED FOR DESIGN CONFORMITY AND GENERAL CONFORMANCE TO CONTRACT DOCUMENTS ONLY. THE CONTRACTOR IS RESPONSIBLE FOR CONFIRMING AND CORRELATING DIMENSIONS AT JOBSITE FOR TOLERANCE, CLEARANCE, QUANTITIES, FABRICATION, COORDINATION OF HIS OR HER WORK WITH OTHER TRADES, AND FULL COMPLIANCE WITH CONTRACT DOCUMENTS.

STATUS:

APPROVED

01/13/2023

REVIEWED BY:
CPD

ENGINEER, EVERSTEAD

Customer		Job Name		Job Site Address		City, State		Designer		Job #	
Lot 50 Osage		2109/2111 SW Osage Dr		Lee's Summit		MO		Chuck Haspels		(785) 746-4266	
Clover & Hive		1/10/2023		Job # B230005							

THIS IS A TRUSS LAYOUT. THESE TRUSSES ARE DESIGNED AS INDIVIDUAL BUILDING COMPONENTS TO BE INCORPORATED INTO THE BUILDING DESIGN AT THE SPECIFICATION OF THE BUILDING DESIGNER. SEE INDIVIDUAL DESIGN SHEETS FOR EACH TRUSS DESIGN IDENTIFIED ON THE PLACEMENT DRAWING. THE BUILDING DESIGNER IS RESPONSIBLE FOR TEMPORARY AND PERMANENT BRACING OF THE TRUSSES TO BE BUILT. THE TRUSSES ARE NOT TO BE USED AS A MEANS OF SUPPORT FOR OTHER STRUCTURAL ELEMENTS. THE TRUSSES ARE NOT TO BE USED AS A MEANS OF SUPPORT FOR OTHER STRUCTURAL ELEMENTS. THE TRUSSES ARE NOT TO BE USED AS A MEANS OF SUPPORT FOR OTHER STRUCTURAL ELEMENTS.

Shop Drawing Approval

THIS LAYOUT IS THE SOLE SOURCE FOR FABRICATION OF TRUSSES AND VOIDS ALL PREVIOUS ARCHITECTURAL OR OTHER TRUSS LAYOUTS. REVIEW AND APPROVAL OF THIS LAYOUT MUST BE RECEIVED BEFORE ANY TRUSSES WILL BE BUILT. VERIFY ALL CONDITIONS TO INSURE AGAINST CHANGES THAT WILL RESULT IN EXTRA CHARGES TO YOU.

Wheeler Lumber
1959 Old Hwy 50 NE
Waverly, KS 66871