

**RELEASE FOR CONSTRUCTION  
AS NOTED ON PLANS REVIEW  
DEVELOPMENT SERVICES  
LEE'S SUMMIT, MISSOURI  
01/18/2023 9:22:27**

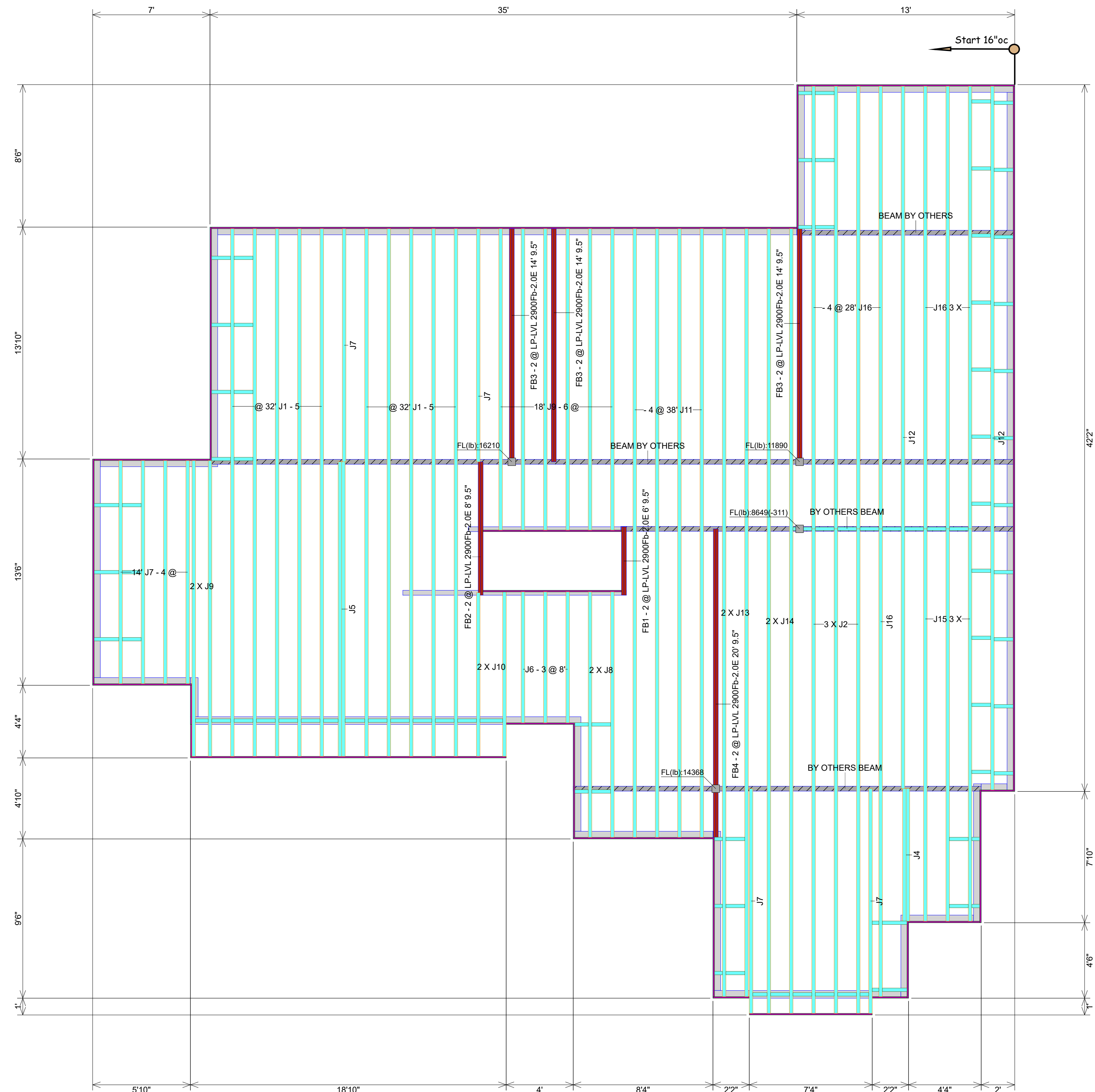
**GENERAL NOTES**  
 1. GENERAL JOISTS TO BE 11-7/8" LPI20 PLUS @ 16" O.C. TYP. UNLESS OTHERWISE NOTED  
 2. ALL BLOCKING PER STRUCTURAL PLAN  
 3. LOADING TO BE 40 PSF LL - 15 PSF DL

**AMERHART**  
 400 MARSHVIEW DRIVE  
 SUN PRAIRIE, WI 53590  
 1-800-879-7123  
 1-608-834-2253

**ADDITIONAL NOTES**  
 1. ALWAYS READ PRODUCT BROCHURE BEFORE INSTALLATION OF EWP PRODUCTS.  
 2. REFER TO HOLE CHARTS PRIOR TO DRILLING PRODUCT.  
 3. THIS DOCUMENT IS INTENDED SOLEY AS A PLACEMENT PLAN. IT IS TO BE REVIEWED BY THE ENGINEER OF RECORD AND MUST MEET HIS/HER APPROVAL PRIOR TO INSTALLATION OF OUR PRODUCT.  
 4. THIS DOCUMENT IS NOT TO BE USED AS A REPLACEMENT FOR YOUR ORIGINAL STRUCTURAL PLANS.  
 5. LAYOUT, QUANTITY AND LENGTH TO BE VERIFIED BY CONTRACTOR.  
 6. IF WALLS ARE SPECIFIED IN THIS QUOTE, CONTRACTOR MUST VERIFY ALL DIMENSIONS AND ROUGH OPENING SIZES PRIOR TO CONSTRUCTION OF WALL. ROUGH OPENING SIZES ARE ESTIMATES ONLY. TALL WALL IS DESIGNED FOR VERTICAL LOADS AND DIRECT WIND LOADS ONLY. INLINE LATERAL BRACING OF THE BUILDING DIAPHRAGM IS TO BE ACCOUNTED FOR BY THE BUILDING DESIGNER/ENGINEER.



Layout Name  
**LOT 119 - SUMMIT VIEW FARMS  
 3208 SW SADDLEBRED TERR  
 64082**



**FIRST FLOOR JOIST PLACEMENT PLAN  
 LOT 119 - SUMMIT VIEW FARMS  
 3208 SW SADDLEBRED TER 64082  
 TL21163ATH**

**Ground Floor Joist**

| Label | Description | Width | Depth | Qty | Plies | Pcs | Length |
|-------|-------------|-------|-------|-----|-------|-----|--------|
| J14   | LPI 20 Plus | 2.5   | 9.5   |     |       | 2   | 48-0-0 |
| J13   | LPI 20 Plus | 2.5   | 9.5   |     |       | 2   | 46-0-0 |
| J12   | LPI 20 Plus | 2.5   | 9.5   |     |       | 2   | 42-0-0 |
| J11   | LPI 20 Plus | 2.5   | 9.5   |     |       | 4   | 38-0-0 |
| J1    | LPI 20 Plus | 2.5   | 9.5   |     |       | 10  | 32-0-0 |
| J2    | LPI 20 Plus | 2.5   | 9.5   |     |       | 3   | 30-0-0 |
| J16   | LPI 20 Plus | 2.5   | 9.5   |     |       | 8   | 28-0-0 |
| J15   | LPI 20 Plus | 2.5   | 9.5   |     |       | 3   | 24-0-0 |
| J9    | LPI 20 Plus | 2.5   | 9.5   |     |       | 8   | 18-0-0 |
| J5    | LPI 20 Plus | 2.5   | 9.5   | 1   | 2     | 2   | 18-0-0 |
| J8    | LPI 20 Plus | 2.5   | 9.5   |     |       | 2   | 16-0-0 |
| J7    | LPI 20 Plus | 2.5   | 9.5   |     |       | 8   | 14-0-0 |
| J10   | LPI 20 Plus | 2.5   | 9.5   |     |       | 2   | 10-0-0 |
| J6    | LPI 20 Plus | 2.5   | 9.5   |     |       | 3   | 8-0-0  |
| J4    | LPI 20 Plus | 2.5   | 9.5   | 1   | 2     | 2   | 8-0-0  |

**Blocking**

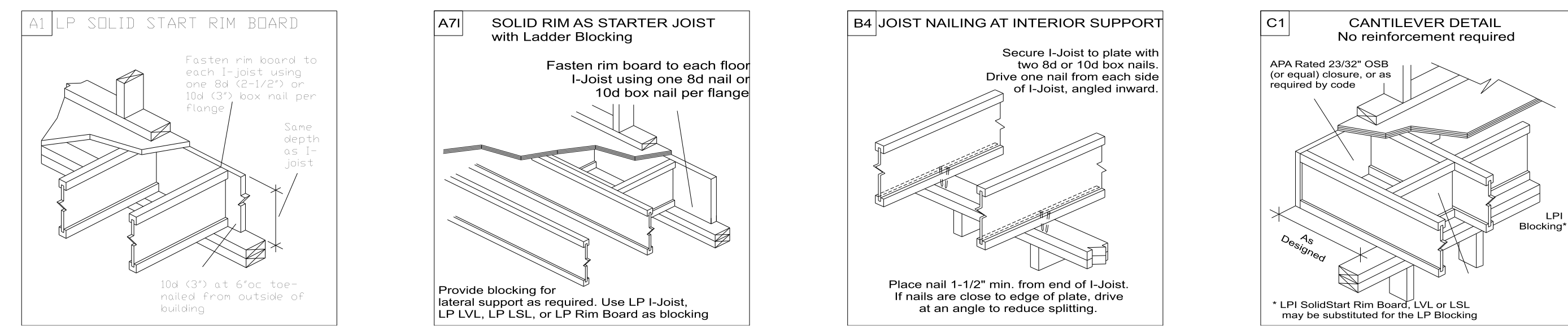
| Label | Description | Width | Depth | Qty | Plies | Pcs | Length |
|-------|-------------|-------|-------|-----|-------|-----|--------|
| BLK1  | LPI 20 Plus | 2.5   | 9.5   |     |       | 88  | 2-0-0  |

**Rim Board**

| Label | Description                  | Width | Depth | Qty | Plies | Pcs | Length |
|-------|------------------------------|-------|-------|-----|-------|-----|--------|
| R1    | LP APA Rated OSB 1.125 X 9.5 | 1.125 | 9.5   |     |       | 20  | 12-0-0 |

**LVL/LSL**

| Label | Description        | Width | Depth | Qty | Plies | Pcs | Length |
|-------|--------------------|-------|-------|-----|-------|-----|--------|
| FB4   | LP-LVL 2900Fb-2.0E | 1.75  | 9.5   | 1   | 2     | 2   | 20-0-0 |
| FB3   | LP-LVL 2900Fb-2.0E | 1.75  | 9.5   | 3   | 2     | 6   | 14-0-0 |
| FB2   | LP-LVL 2900Fb-2.0E | 1.75  | 9.5   | 1   | 2     | 2   | 8-0-0  |
| FB1   | LP-LVL 2900Fb-2.0E | 1.75  | 9.5   | 1   | 2     | 2   | 6-0-0  |



**I JOIST LAYOUT/SUBMITTAL REVIEW**

REVIEWED & FOUND TO BE IN CONFORMANCE WITH REFERENCED PLAN  
 FURNISH AS CORRECTED  
 REVIEWED WITH CHANGES TO REFERENCED DRAWINGS  
 REVISE AS NOTED & RESUBMIT

THIS REVIEW IS TO VERIFY GENERAL CONFORMANCE WITH THE DESIGN AND INFORMATION CONTAINED IN THE REFERENCED PLAN AND/OR CONSTRUCTION DOCUMENTS. REVIEW DOES NOT RELIEVE THE CONTRACTOR FROM COMPLIANCE WITH THE PLAN AND SPECIFICATIONS. CONTRACTOR IS RESPONSIBLE FOR ALL DIMENSIONS, MEANS, METHODS, TECHNIQUES, PROCEDURES, SAFETY AND CONSTRUCTION OF THE WORK TO BE PROVIDED.

**HD ENGINEERING & DESIGN**  
 11666 W. 75TH ST., P. 913-631-2222  
 SUITE 200, MO 64082 WWW.HDENGINEERS.COM

SIGNED: *[Signature]* 01/12/2023  
 DATE

|             |                             |
|-------------|-----------------------------|
| Project     | TL21163ATH                  |
| Created     | November 29, 2021           |
| Designer    | Thomas Hamrick              |
| Layout Name | LOT 119 - SUMMIT VIEW FARMS |
| Dealer      | TEAGUE LUMBER               |
| Revised     | November 29, 2021           |