

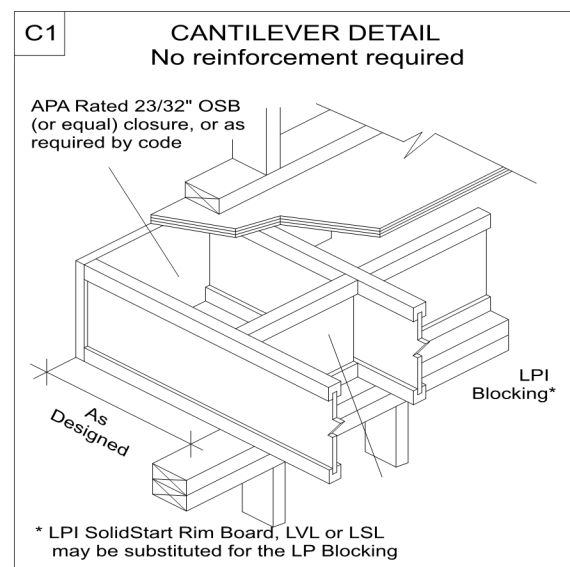
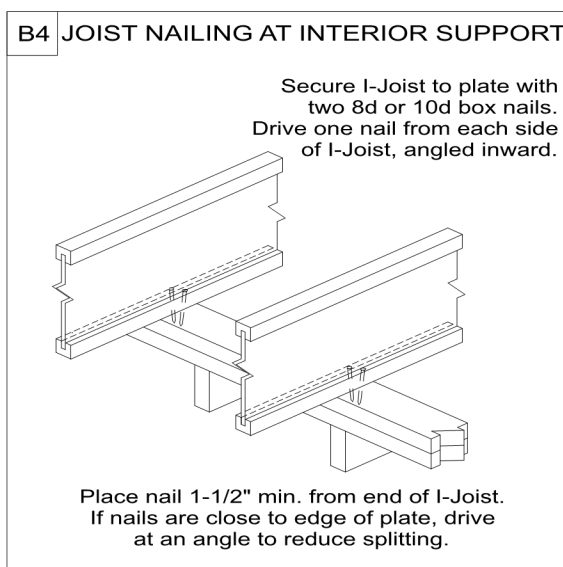
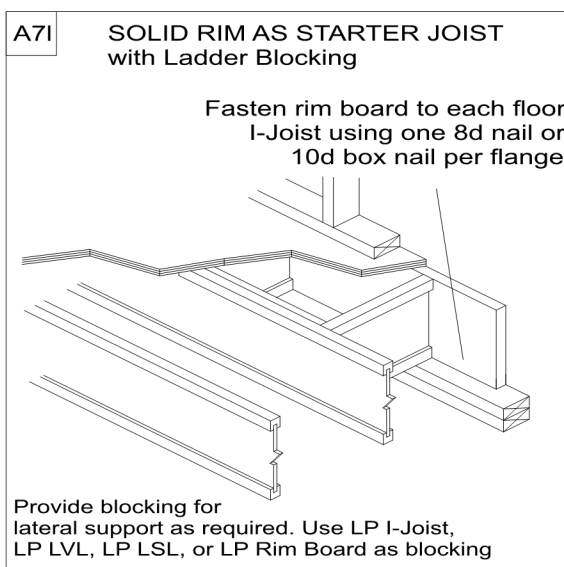
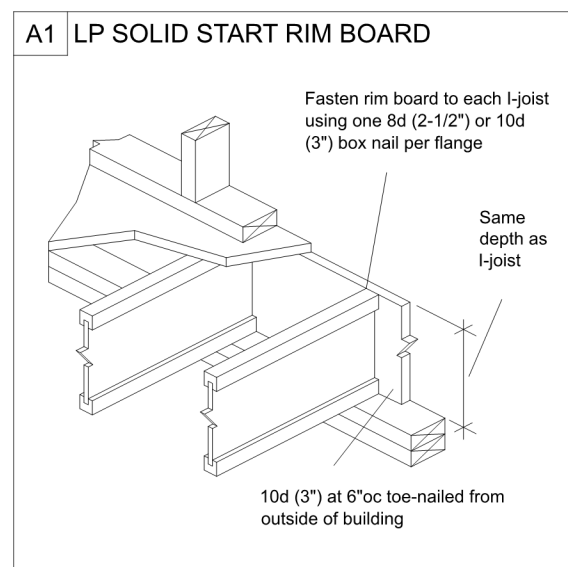
FIRST FLOOR JOIST PLACEMENT PLAN
LOT 161 - WOODSIDE RIDGE
TL22094ATH

Van Deurzen and Associates, P.A.
11011 King Street, Suite 130
Overland Park, KS 66210
(913) 451-6305 FAX: (913) 451-1021

This shop drawing has been reviewed for conformance with the design concept and information given in the Contract Documents.

<u> X </u>	Reviewed with no exceptions noted
<u> </u>	Reviewed as noted.
<u> </u>	Returned for correction.
<u> </u>	Not Reviewed.

By: JWH Date: 07/01/2022



ADDITIONAL NOTES

1. ALWAYS READ PRODUCT BROCHURE BEFORE INSTALLATION OF EWP PRODUCTS.
2. REFER TO HOLE CHARTS PRIOR TO DRILLING PRODUCT.
3. THIS DOCUMENT IS INTENDED SOLELY AS A PLACEMENT PLAN. IT IS TO BE REVIEWED BY THE ENGINEER OF RECORD AND MUST MEET HIS/HER APPROVAL PRIOR TO INSTALLATION OF OUR PRODUCT.
4. THIS DOCUMENT IS NOT TO BE USED AS A REPLACEMENT FOR YOUR ORIGINAL STRUCTURAL PLANS.
5. LAYOUT, QUANTITY AND LENGTH TO BE VERIFIED BY CONTRACTOR.
6. IF WALLS ARE SPECIFIED IN THIS QUOTE, CONTRACTOR MUST VERIFY ALL DIMENSIONS AND ROUGH OPENING SIZES PRIOR TO CONSTRUCTION OF WALL. ROUGH OPENING SIZES ARE ESTIMATES ONLY. TALL WALL IS DESIGNED FOR VERTICAL LOADS AND DIRECT WIND LOADS ONLY. INLINE LATERAL BRACING OF THE BUILDING DIAPHRAGM IS TO BE ACCOUNTED FOR BY THE BUILDING DESIGNER/ENGINEER.

GENERAL NOTES

1. FLOOR JOISTS TO BE 11-7/8" LPI20 PLUS @ 16" O.C. TYP. UNLESS OTHERWISE NOTED
2. ALL BLOCKING PER STRUCTURAL PLAN
3. LOADING TO BE 40 PSF LL - 15 PSF DL

AMERHART

400 MARSHVIEW DRIVE
SUN PRAIRIE, WI 53590
1-800-879-7123
1-608-834-2253

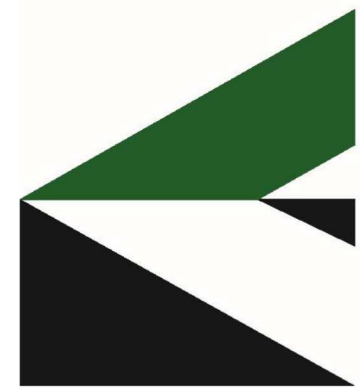
Ground Floor							
I Joist							
Label	Description	Width	Depth	Qty	Plies	Pcs	Length
J18	LPI 20 Plus	2.5	11.875			4	36-0-0
J17	LPI 20 Plus	2.5	11.875			10	34-0-0
J16	LPI 20 Plus	2.5	11.875			4	32-0-0
J15	LPI 20 Plus	2.5	11.875			2	30-0-0
J14	LPI 20 Plus	2.5	11.875			3	28-0-0
J13	LPI 20 Plus	2.5	11.875			6	24-0-0
J12	LPI 20 Plus	2.5	11.875			11	22-0-0
J11	LPI 20 Plus	2.5	11.875			6	20-0-0
J10	LPI 20 Plus	2.5	11.875			3	18-0-0
J20	LPI 20 Plus	2.5	11.875	5	2	10	16-0-0
J9	LPI 20 Plus	2.5	11.875			6	16-0-0
J8	LPI 20 Plus	2.5	11.875			5	12-0-0
J19	LPI 20 Plus	2.5	11.875	1	2	2	10-0-0
J7	LPI 20 Plus	2.5	11.875			15	8-0-0
J6	LPI 20 Plus	2.5	11.875			2	4-0-0
J5	LPI 20 Plus	2.5	11.875			2	2-0-0
Blocking							
Label	Description	Width	Depth	Qty	Plies	Pcs	Length
BLK1	LPI 20 Plus	2.5	11.875			146	2-0-0
Rim Board							
Label	Description	Width	Depth	Qty	Plies	Pcs	Length
R1	LP APA Rated OSB 1.125 X 11.875	1.125	11.875			20	12-0-0
LVL/LSL							
Label	Description	Width	Depth	Qty	Plies	Pcs	Length
FB17	LP-LVL 2900Fb-2.0E	1.75	11.875	1	2	2	20-0-0
FB16	LP-LVL 2900Fb-2.0E	1.75	11.875	1	2	2	18-0-0
FB15	LP-LVL 2900Fb-2.0E	1.75	11.875	1	2	2	16-0-0
FB14	LP-LVL 2900Fb-2.0E	1.75	11.875	2	2	4	14-0-0
FB13	LP-LVL 2900Fb-2.0E	1.75	11.875	1	2	2	10-0-0
FB12	LP-LVL 2900Fb-2.0E	1.75	11.875	1	2	2	8-0-0
FB11	LP-LVL 2900Fb-2.0E	1.75	11.875	1	2	2	6-0-0
FB10	LP-LVL 2900Fb-2.0E	1.75	11.875			2	4-0-0
Hanger							
					Beam/Girder	Supported Member	
Label	Pcs	Description	Skew	Slope	fasteners	fasteners	
H1	2	HHUS410			30 16d	10 16d	
H2	2	LSSR410Z-L	Var	Var	20 16d	13 16dx2 1/2	
H3	1	LSSR410Z-R	Var	Var	20 16d	13 16dx2 1/2	
H4	1	HUS1.81/10			30 16d	10 16d	
H5	1	MIU5.12/11 (Min)			20 16d	2 10dx1 1/2	
H6	1	LSSR1.81Z-L	Var	Var	13 10dx2 1/2	9 10dx1 1/2	
H7	4	IUS2.56/11.88 (Min)			10 10d		
H9	1	HU312			16 10dx1 1/2	6 10dx1 1/2	
H10	1	MIU2.56/9 (Max)			16 10dx1 1/2	6 10dx1 1/2	
H11	1	LSSR2.56Z-L	Var	Var	13 10dx2 1/2	9 10dx1 1/2	
H12	3	LSSR2.56Z-R	Var	Var	13 10dx2 1/2	9 10dx1 1/2	



Lavout Name

LOT 161 - WOODSIDE
RIDGE

Ameribart

Project
TL22094ATH

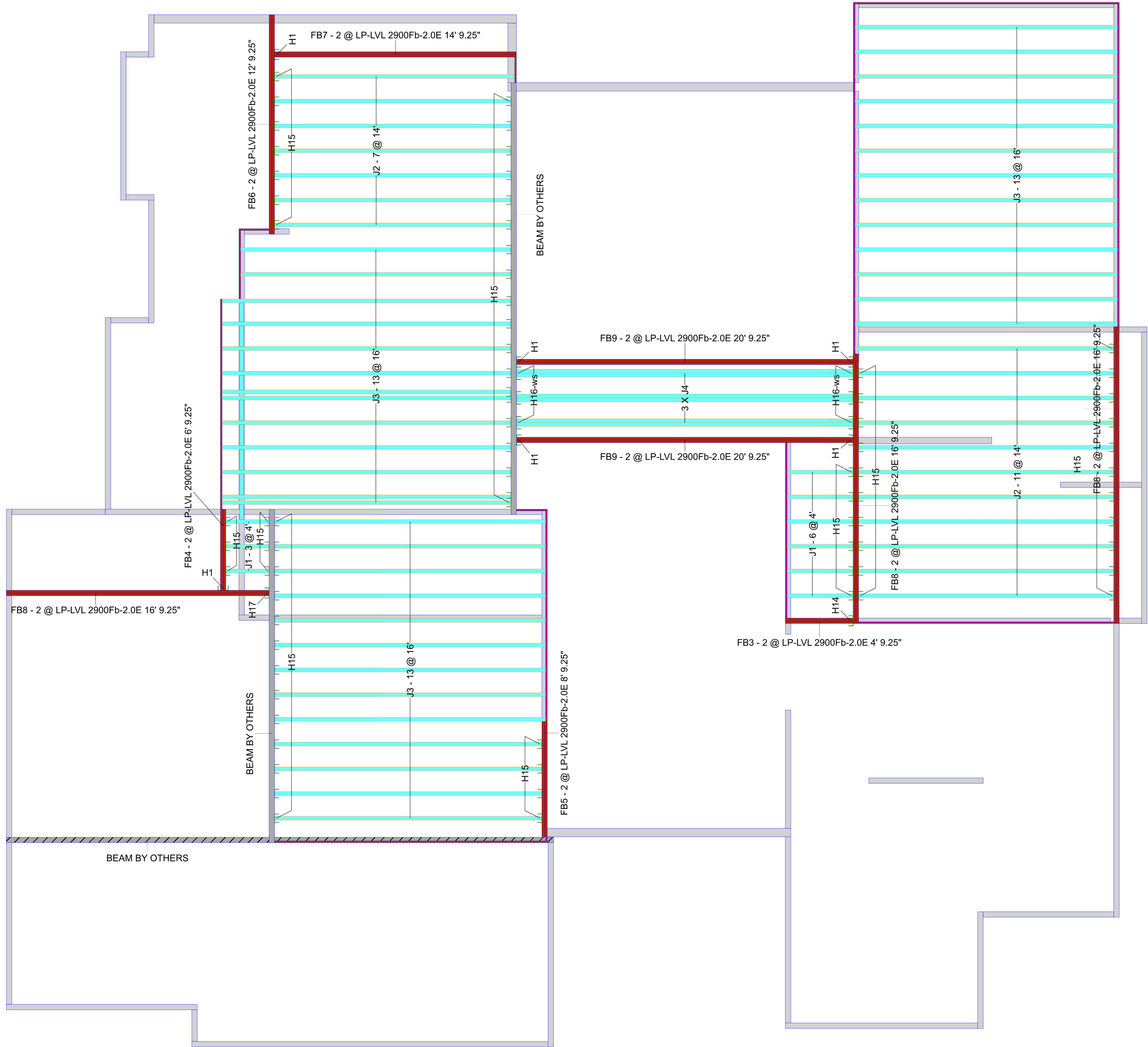
Created
June 15, 2022

Designer
Thomas Hamrick

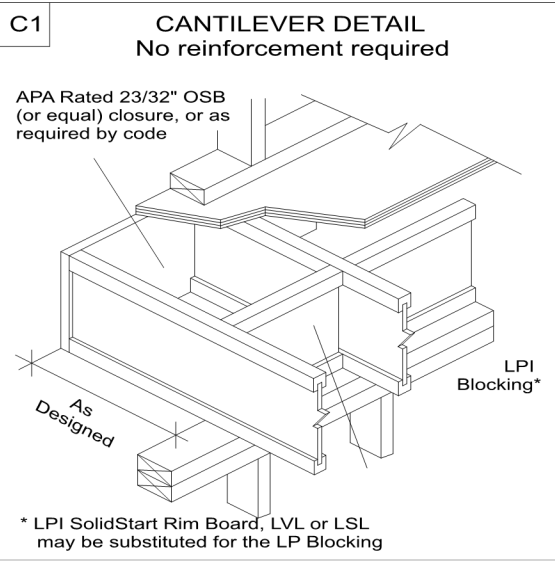
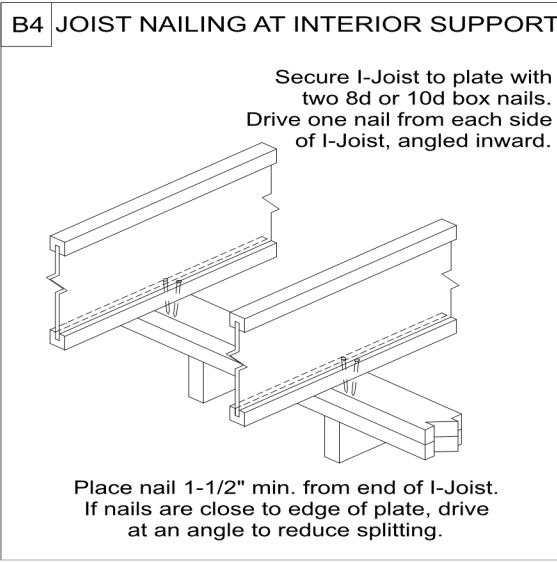
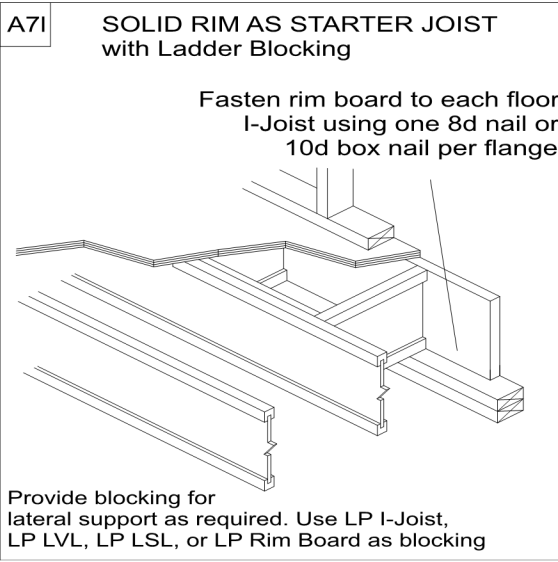
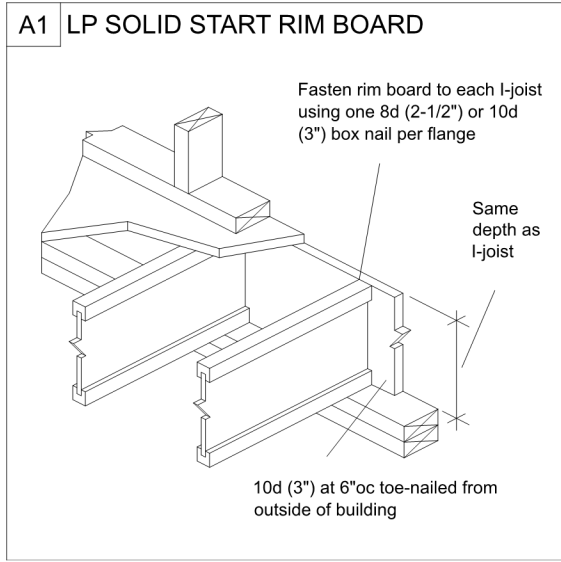
Layout Name
LOT 161 WOODSIDE RIDGE

Dealer

Revised
June 15, 2023



SECOND FLOOR JOIST PLACEMENT PLAN
LOT 161 - WOODSIDE RIDGE
TL22094ATH



GENERAL NOTES

1. FLOOR JOISTS TO BE 11-7/8" LPI20 PLUS @ 16" O.C. TYP. UNLESS OTHERWISE NOTED
2. ALL BLOCKING PER STRUCTURAL PLAN
3. LOADING TO BE 40 PSF LL - 15 PSF DL

AMERHART

400 MARSHVIEW DRIVE
SUN PRAIRIE, WI 53590
1-800-879-7123
1-608-834-2253

ADDITIONAL NOTES

1. ALWAYS READ PRODUCT BROCHURE BEFORE INSTALLATION OF EWP PRODUCTS.
2. REFER TO HOLE CHARTS PRIOR TO DRILLING PRODUCT.
3. THIS DOCUMENT IS INTENDED SOLEY AS A PLACEMENT PLAN. IT IS TO BE REVIEWED BY THE ENGINEER OF RECORD AND MUST MEET HIS/HER APPROVAL PRIOR TO INSTALLATION OF OUR PRODUCT.
4. THIS DOCUMENT IS NOT TO BE USED AS A REPLACEMENT FOR YOUR ORIGINAL STRUCTURAL PLANS.
5. LAYOUT, QUANTITY AND LENGTH TO BE VERIFIED BY CONTRACTOR.
6. IF WALLS ARE SPECIFIED IN THIS QUOTE, CONTRACTOR MUST VERIFY ALL DIMENSIONS AND ROUGH OPENING SIZES PRIOR TO CONSTRUCTION OF WALL. ROUGH OPENING SIZES ARE ESTIMATES ONLY. TALL WALL IS DESIGNED FOR VERTICAL LOADS AND DIRECT WIND LOADS ONLY. INLINE LATERAL BRACING OF THE BUILDING DIAPHRAGM IS TO BE ACCOUNTED FOR BY THE BUILDING DESIGNER/ENGINEER.

Second Floor

I Joist

Label	Description	Width	Depth	Qty	Plies	Pcs	Length
J4	LPI 20 Plus	2.5	9.5	3	2	6	20-0-0
J3	LPI 20 Plus	2.5	9.5			39	16-0-0
J2	LPI 20 Plus	2.5	9.5			18	14-0-0
J1	LPI 20 Plus	2.5	9.5			9	4-0-0

Blocking

Label	Description	Width	Depth	Qty	Plies	Pcs	Length
BLK2	LPI 20 Plus	2.5	9.5			9	2-0-0

Rim Board

Label	Description	Width	Depth	Qty	Plies	Pcs	Length
R2	LP APA Rated OSB 1.125 X 9.5	1.125	9.5			11	12-0-0

LVL/LSL

Label	Description	Width	Depth	Qty	Plies	Pcs	Length
FB9	LP-LVL 2900Fb-2.0E	1.75	9.25	2	2	4	20-0-0
FB8	LP-LVL 2900Fb-2.0E	1.75	9.25	3	2	6	16-0-0
FB7	LP-LVL 2900Fb-2.0E	1.75	9.25	1	2	2	14-0-0
FB6	LP-LVL 2900Fb-2.0E	1.75	9.25	1	2	2	12-0-0
FB5	LP-LVL 2900Fb-2.0E	1.75	9.25	1	2	2	8-0-0
FB4	LP-LVL 2900Fb-2.0E	1.75	9.25	1	2	2	6-0-0
FB3	LP-LVL 2900Fb-2.0E	1.75	9.25	1	2	2	4-0-0

Hanger

		Beam/Girder			Supported Member	
Label	Pcs	Description	Skew	Slope	fasteners	fasteners
H1	6	HHUS410			30 16d	10 16d
H14	1	HUCQ410-SDS			12 SDS 1/4x2 1/2	6 SDS 1/4x2 1/2
H15	76	IUS2.56/9.5 (Min)			8 10d	
H16	6	HU310-2			14 16d	6 10d
H17	1	HU410 (Min)			14 16d	6 10d

Van Deurzen and Associates, P.A.
11011 King Street, Suite 130
Overland Park, KS 66210
(913) 451-6305 FAX: (913) 451-1021

This shop drawing has been reviewed for conformance with the design concept and information given in the Contract Documents.

 X Reviewed with no exceptions noted.
 Reviewed as noted.
 Returned for correction.
 Not Reviewed.

By. JWH Date: 07/01/2022



Layout Name
LOT 161 - WOODSIDE
RIDGE



Project TL22094ATH	Created June 15, 2022	Designer Thomas Hamrick	Layout Name LOT 161 - WOODSIDE RIDGE	Dealer TEAGUE LUMBER	Revised June 15, 2022
-----------------------	--------------------------	----------------------------	---	-------------------------	--------------------------