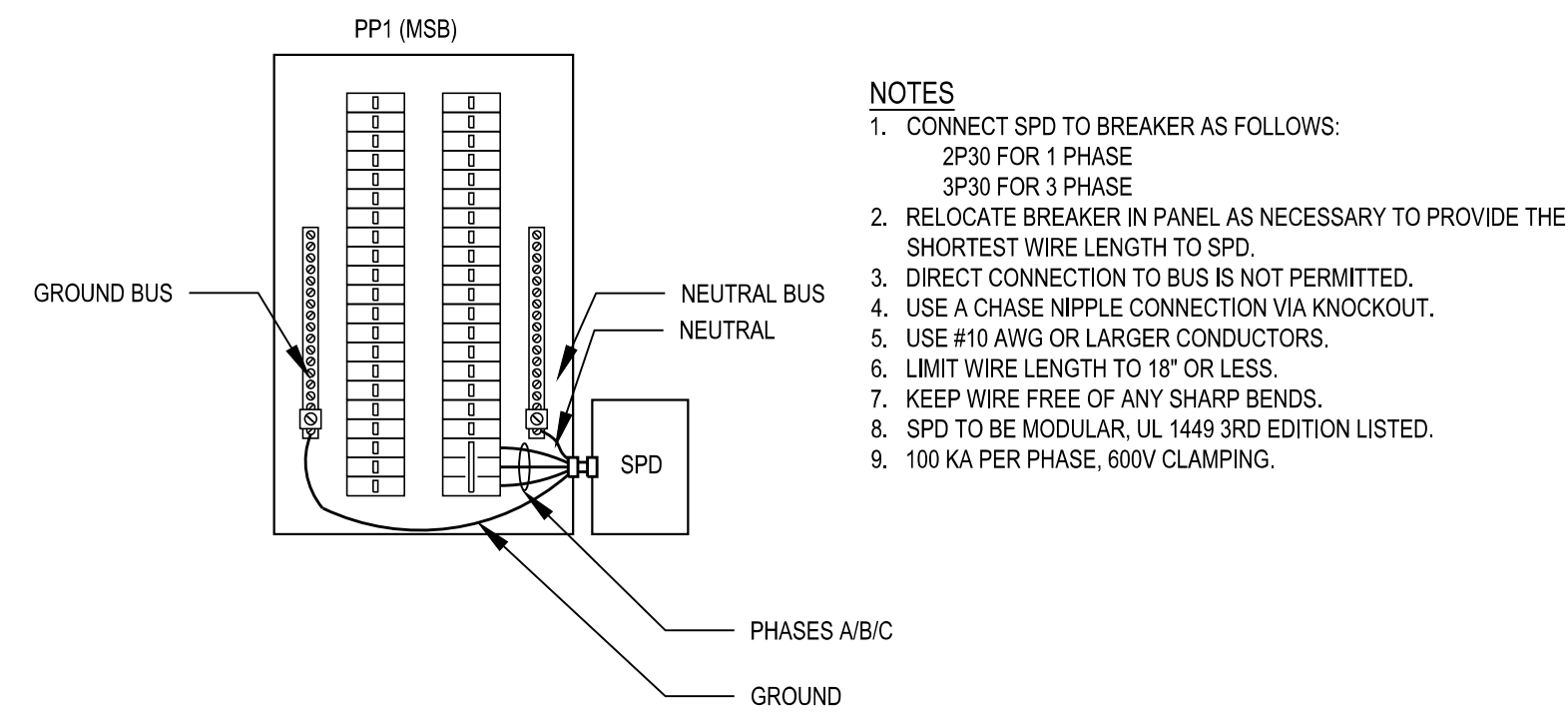
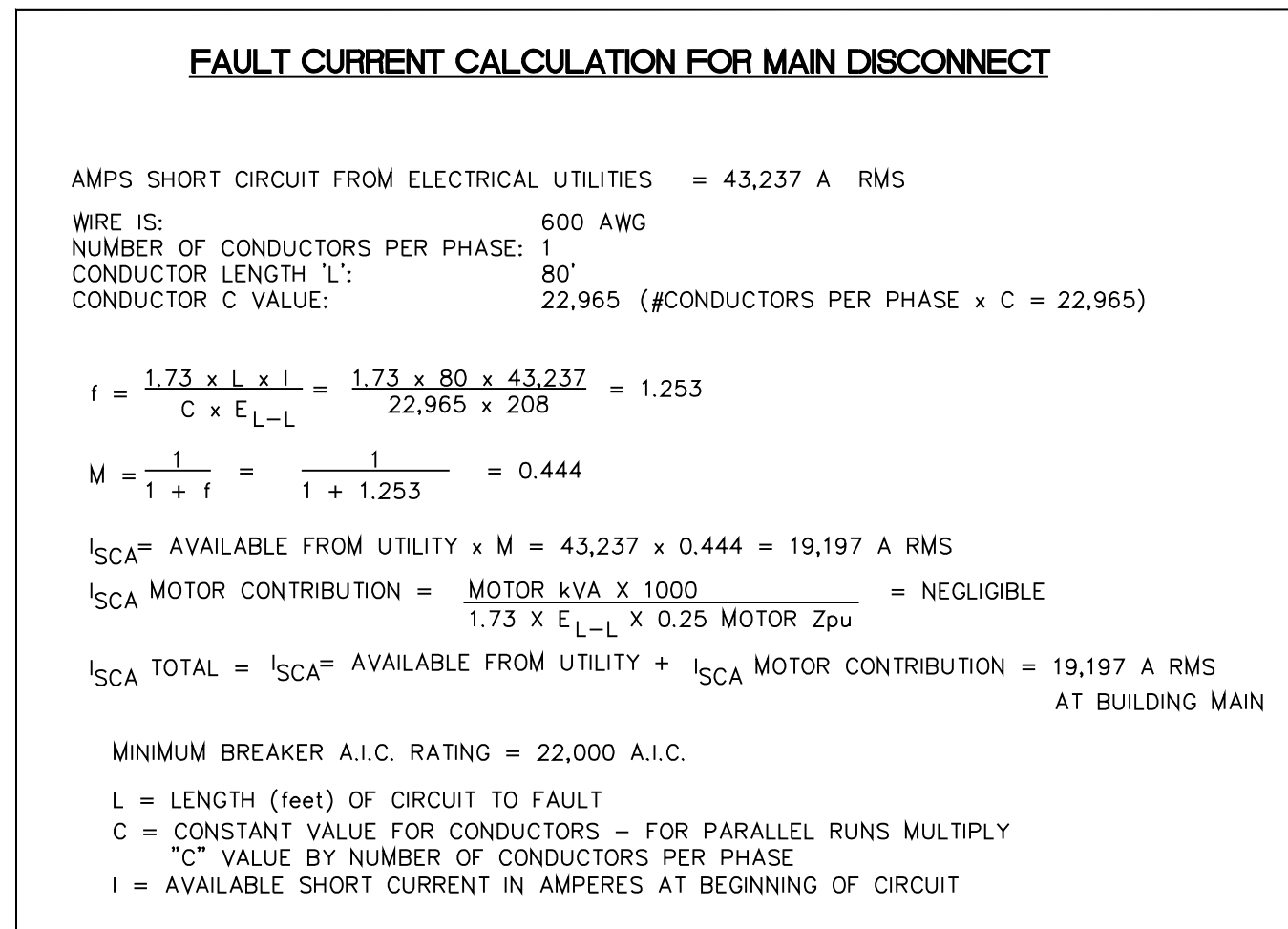


<p>VOLTAGE DROP CALCULATION FROM TRANSFORMER TO MAIN DISCONNECT:</p> <p>SOURCE = AC, 3Φ VOLTAGE = 208.0 COND. MATERIAL = PVC POWER FACTOR = 0.90 COND. TEMP. = 75°C CONDUCTOR METAL = COPPER COND. PER PHASE = 1 WIRE SIZE = 600 MCM LOAD = 86.8 AMPS LENGTH (1-WAY) = 80.0 FEET RESULT: THE VOLTAGE DROP = 0.22%, 0.45V LL.</p>	<p>VOLTAGE DROP CALCULATION FROM MAIN DISCONNECT TO PP1:</p> <p>SOURCE = AC, 3Φ VOLTAGE = 208.0 COND. MATERIAL = STEEL POWER FACTOR = 0.90 COND. TEMP. = 75°C CONDUCTOR METAL = COPPER COND. PER PHASE = 1 WIRE SIZE = 600 MCM LOAD = 86.8 AMPS LENGTH (1-WAY) = 25.0 FEET RESULT: THE VOLTAGE DROP = 0.08%, 0.16V LL.</p>	<p>VOLTAGE DROP CALCULATION TO FARTHEST BRANCH CIRCUIT: PP3-35,37</p> <p>SOURCE = AC, 1Φ VOLTAGE = 208.0 COND. MATERIAL = PVC POWER FACTOR = 0.90 COND. TEMP. = 75°C CONDUCTOR METAL = COPPER COND. PER PHASE = 2 WIRE SIZE = #10 LOAD = 0.968 KVA LENGTH (1-WAY) = 160.0 FEET RESULT: THE VOLTAGE DROP = 0.39%, 0.82V.</p>
<p>VOLTAGE DROP CALCULATION TO PP1 = 0.22%+0.08% = 0.30%</p> <p>VOLTAGE DROP CALCULATION TO FARTHEST BRANCH CIRCUIT: 0.39%</p> <p>TOTAL PERCENT VOLTAGE DROP = 0.30% + 0.39% = 0.69%</p>		



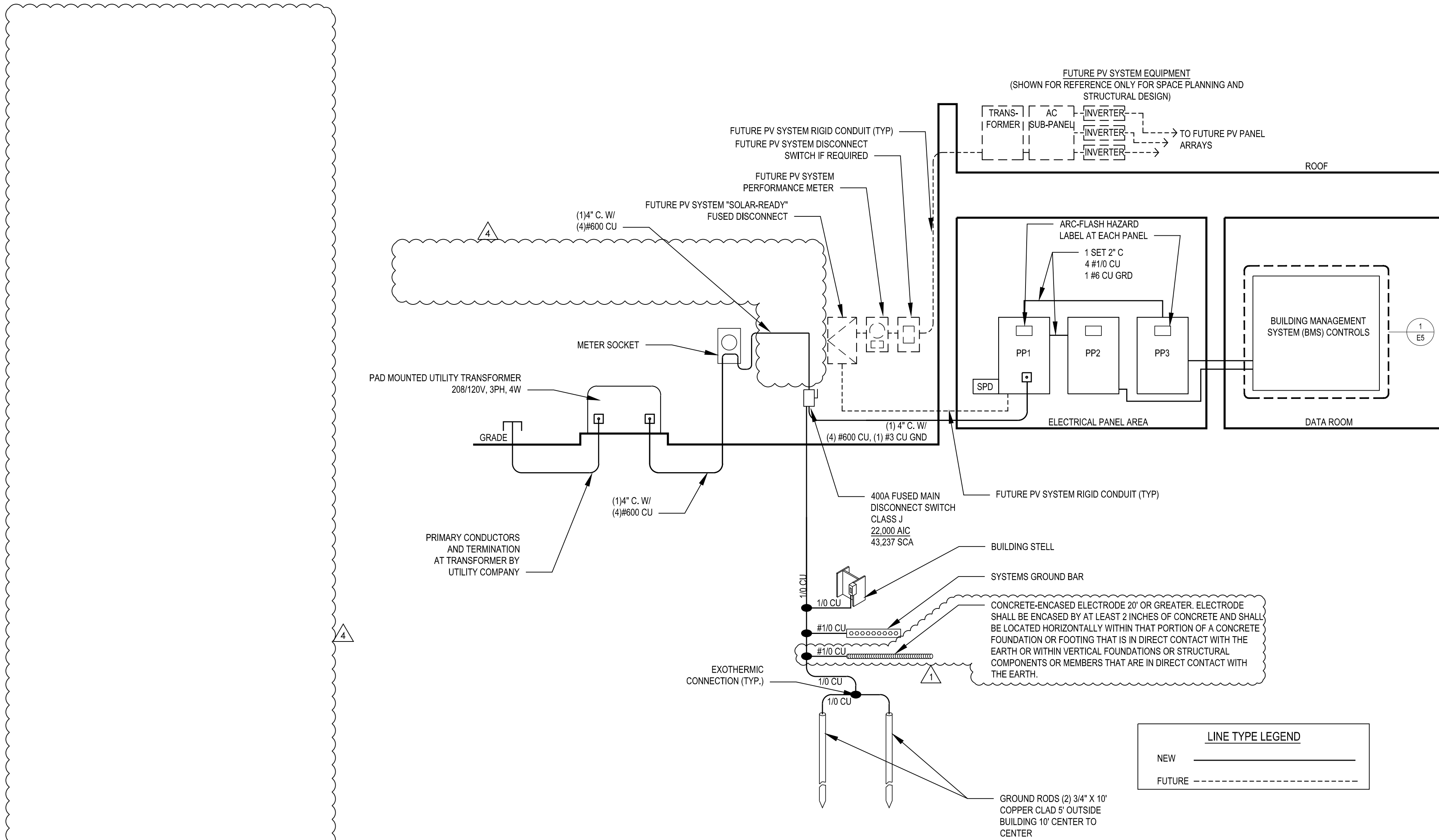
2 OVERALL VOLTAGE DROP
E-6 N.T.S.

3 E-6 MAIN DISCONNECT FAULT CURRENT CALCULATION

4
E-6

ELECTRICAL SERVICE
SURGE PROTECTION

N.T.S.



1
E-6

ELECTRICAL RISER DIAGRAM

N.T.S.

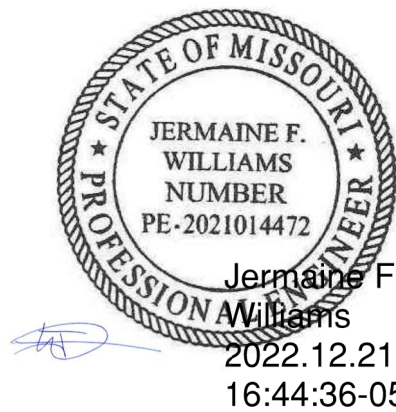
PREPARED BY:

EBI Consulting

ENVIRO BUSINESS, INC.
21 B Street | Burlington, MA 01803
Tel: (781) 273-2500 | www.ebiconsulting.com

DRAWINGS AND SPECIFICATIONS ARE THE PROPERTY AND COPYRIGHT OF ENVIROBUSINESS, INC. THEY ARE FOR THE EXCLUSIVE USE BY THE TITLE CLIENT FOR THEIR USE AND FOR OCCUPANCY OF THE PROJECT FOR WHICH THEY WERE PREPARED AND NOT FOR THE CONSTRUCTION OF ANY OTHER PROJECT. ANY DUPLICATION OR USE WITHOUT THE EXPRESS WRITTEN CONSENT OF ENVIROBUSINESS, INC. IS STRICTLY PROHIBITED.

SIGNED BY:



PRYOR ROAD &
LOWENSTEIN DRIVE

908 NW PRYOR ROAD
LEE'S SUMMIT, MO 64081

EBI JOB #4121000090		
ISSUE	DATE	DESCRIPTION
0	03/02/2022	PERMIT
1	04/11/2022	PERMIT REVISIONS
2	8/18/2022	ASI #1 - CONSTRUCTION SET
3	10/10/2022	PARAPET RFI #12
4	12/21/2022	STORM SWITCH REMOVAL



PRYOR & LOWENSTEIN
PROTOTYPE VERSION 20.4

CONTENTS

ONE-LINE DIAGRAM & ELECTRICAL SYSTEM DETAILS

02/04/2022

SHEET

E-7