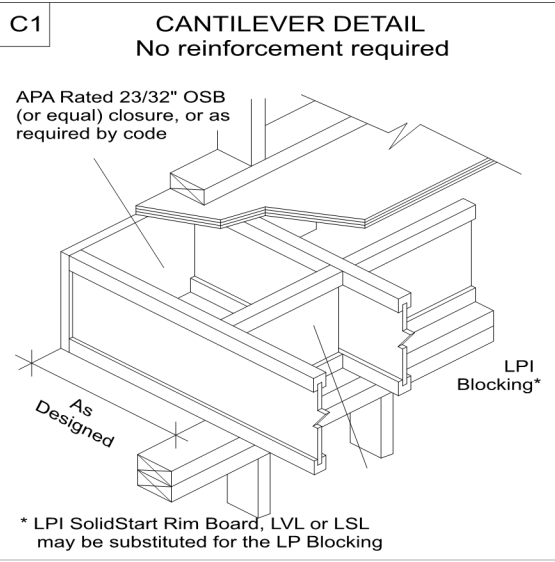
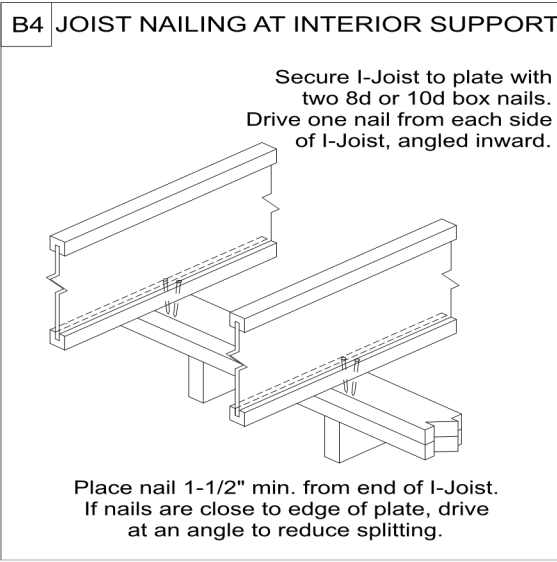
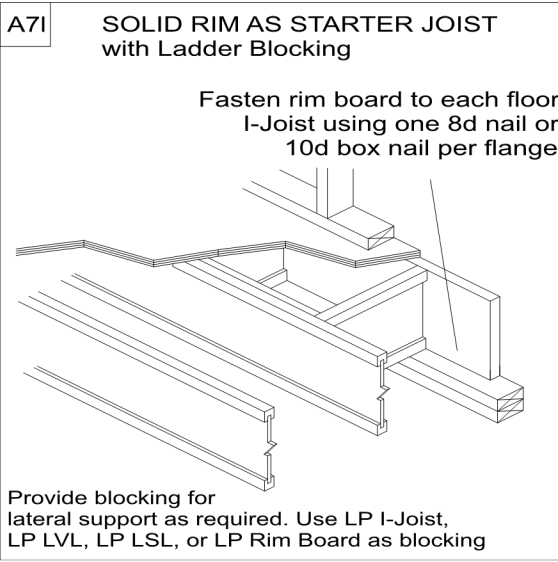
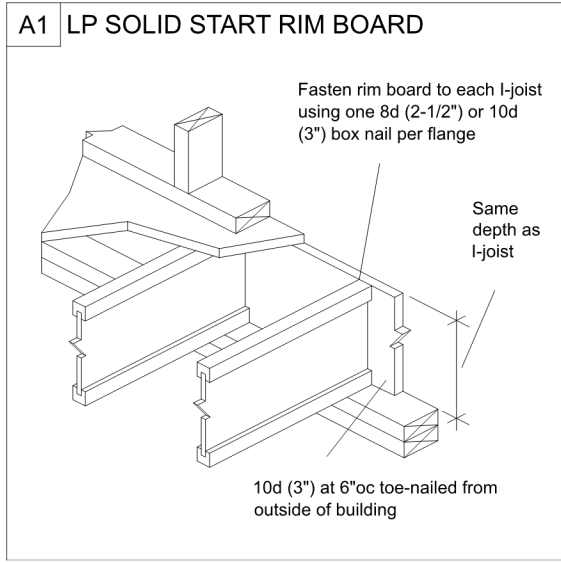


FIRST FLOOR JOIST PLACEMENT PLAN  
LOT 134 - WOODSIDE RIDGE  
TL22076ATH



Scale 1/4" inch = 1 ft.

**ADDITIONAL NOTES**

1. ALWAYS READ PRODUCT BROCHURE BEFORE INSTALLATION OF EWP PRODUCTS.
2. REFER TO HOLE CHARTS PRIOR TO DRILLING PRODUCT.
3. THIS DOCUMENT IS INTENDED SOLEY AS A PLACEMENT PLAN. IT IS TO BE REVIEWED BY THE ENGINEER OF RECORD AND MUST MEET HIS/HER APPROVAL PRIOR TO INSTALLATION OF OUR PRODUCT.
4. THIS DOCUMENT IS NOT TO BE USED AS A REPLACEMENT FOR YOUR ORIGINAL STRUCTURAL PLANS.
5. LAYOUT, QUANTITY AND LENGTH TO BE VERIFIED BY CONTRACTOR.
6. IF WALLS ARE SPECIFIED IN THIS QUOTE, CONTRACTOR MUST VERIFY ALL DIMENSIONS AND ROUGH OPENING SIZES PRIOR TO CONSTRUCTION OF WALL. ROUGH OPENING SIZES ARE ESTIMATES ONLY. TALL WALL IS DESIGNED FOR VERTICAL LOADS AND DIRECT WIND LOADS ONLY. INLINE LATERAL BRACING OF THE BUILDING DIAPHRAGM IS TO BE ACCOUNTED FOR BY THE BUILDING DESIGNER/ENGINEER.

**GENERAL NOTES**

1. FLOOR JOISTS TO BE 11-7/8" LPI20 PLUS @ 16" O.C. TYP. UNLESS OTHERWISE NOTED
2. ALL BLOCKING PER STRUCTURAL PLAN
3. LOADING TO BE 40 PSF LL - 15 PSF DL

**AMERHART**

400 MARSHVIEW DRIVE  
SUN PRAIRIE, WI 53590  
1-800-879-7123  
1-608-834-2253

**Ground Floor**

**I Joist**

Label	Description	Width	Depth	Qty	Plies	Pcs	Length
J13	LPI 20 Plus	2.5	11.875			1	48-0-0
J15	LPI 20 Plus	2.5	11.875			4	36-0-0
J14	LPI 20 Plus	2.5	11.875			9	34-0-0
J12	LPI 20 Plus	2.5	11.875			4	32-0-0
J11	LPI 20 Plus	2.5	11.875			2	30-0-0
J10	LPI 20 Plus	2.5	11.875			3	28-0-0
J16	LPI 20 Plus	2.5	11.875	1	2	2	26-0-0
J9	LPI 20 Plus	2.5	11.875			5	24-0-0
J8	LPI 20 Plus	2.5	11.875			10	22-0-0
J7	LPI 20 Plus	2.5	11.875			6	20-0-0
J6	LPI 20 Plus	2.5	11.875			4	18-0-0
J17	LPI 20 Plus	2.5	11.875	4	2	8	16-0-0
J5	LPI 20 Plus	2.5	11.875			7	16-0-0
J4	LPI 20 Plus	2.5	11.875			5	12-0-0
J3	LPI 20 Plus	2.5	11.875			16	8-0-0
J2	LPI 20 Plus	2.5	11.875			1	4-0-0
J1	LPI 20 Plus	2.5	11.875			1	2-0-0

**Blocking**

Label	Description	Width	Depth	Qty	Plies	Pcs	Length
BLK1	LPI 20 Plus	2.5	11.875			170	2-0-0

**Rim Board**

Label	Description	Width	Depth	Qty	Plies	Pcs	Length
R1	LP APA Rated OSB 1.125 X 11.875	1.125	11.875			20	12-0-0

**LVL/LSL**

Label	Description	Width	Depth	Qty	Plies	Pcs	Length
FB7	LP-LVL 2900Fb-2.0E	1.75	11.875	1	2	2	20-0-0
FB6	LP-LVL 2900Fb-2.0E	1.75	11.875	1	2	2	18-0-0
FB5	LP-LVL 2900Fb-2.0E	1.75	11.875	1	2	2	16-0-0
FB4	LP-LVL 2900Fb-2.0E	1.75	11.875	2	2	4	14-0-0
FB3	LP-LVL 2900Fb-2.0E	1.75	11.875	2	2	4	8-0-0
FB2	LP-LVL 2900Fb-2.0E	1.75	11.875	1	2	2	6-0-0
FB1	LP-LVL 2900Fb-2.0E	1.75	11.875			2	4-0-0

**Hanger**

		Beam/Girder			Supported Member
Label	Pcs	Description	Skew	Slope	fasteners
H1	1	IUS3.56/11.88 (Min)			12 10d
H2	1	IUS3.56/11.88 (Max)			12 10d
H3	1	HUS1.81/10			30 16d
H4	2	LSSR410Z-L	Var	Var	20 16d
H5	1	LSSR410Z-R	Var	Var	20 16d
H6	1	LSSR1.81Z-L	Var	Var	13 10dx2 1/2
H7	3	LSSR2.56Z-R	Var	Var	13 10dx2 1/2
H8	3	IUS2.56/11.88 (Min)			10 10d
H9	1	HU312			16 10dx1 1/2
H10	1	MIU2.56/9 (Max)			16 10dx1 1/2
H17	1	MIU5.12/11 (Max)			20 16d

Van Deurzen and Associates, P.A.  
11011 King Street, Suite 130  
Overland Park, KS 66210  
(913) 451-6305 FAX: (913) 451-1021

This shop drawing has been reviewed for conformance with the design concept and information given in the Contract Documents.

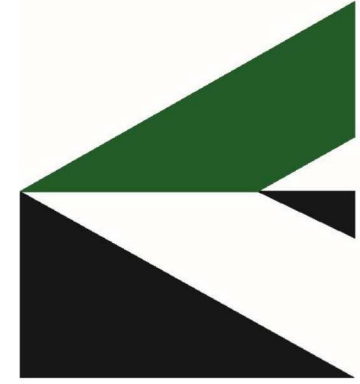
- ☒ Reviewed with no exceptions noted.
- ☐ Reviewed as noted.
- ☐ Returned for correction.
- ☐ Not Reviewed.

By. JWH Date: 06/22/2022



Layout Name  
LOT 134 - WOODSIDE  
RIDGE

Amerhart



Project TL22076ATH	Created May 18, 2022	Designer Thomas Hamrick	Layout Name LOT 134 - WOODSIDE RIDGE	Dealer TEAGUE LUMBER	Revised May 18, 2022
-----------------------	-------------------------	----------------------------	---	-------------------------	-------------------------





Project	TL22076ATH
Created	May 18, 2022
Designer	Thomas Hamrick
Layout Name	LOT 134 - WOODSIDE RIDGE
Dealer	TEAGUE LUMBER
Revised	May 18, 2022

GENERAL NOTES

- FLOOR JOISTS TO BE 11-7/8" LPI20 PLUS @ 16" O.C. TYP. UNLESS OTHERWISE NOTED
- ALL BLOCKING PER STRUCTURAL PLAN
- LOADING TO BE 40 PSF LL - 15 PSF DL

AMERHART

400 MARSHVIEW DRIVE  
SUN PRAIRIE, WI 53590  
1-800-879-7123  
1-608-834-2253

ADDITIONAL NOTES

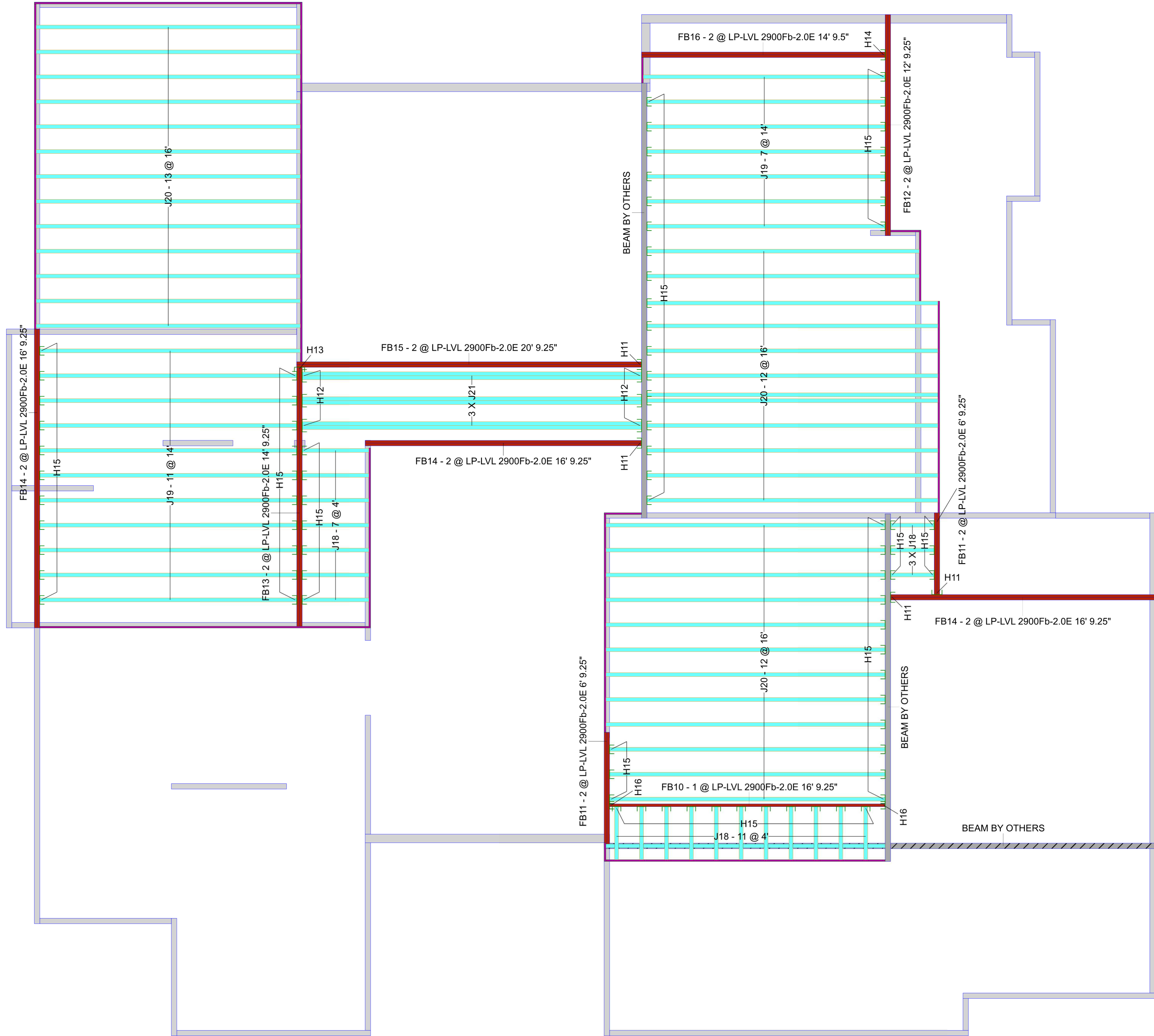
- ALWAYS READ PRODUCT BROCHURE BEFORE INSTALLATION OF EWP PRODUCTS.
- REFER TO HOLE CHARTS PRIOR TO DRILLING PRODUCT.
- THIS DOCUMENT IS INTENDED SOLEY AS A PLACEMENT PLAN. IT IS TO BE REVIEWED BY THE ENGINEER OF RECORD AND MUST MEET HIS/HER APPROVAL PRIOR TO INSTALLATION OF OUR PRODUCT.
- THIS DOCUMENT IS NOT TO BE USED AS A REPLACEMENT FOR YOUR ORIGINAL STRUCTURAL PLANS.
- LAYOUT, QUANTITY AND LENGTH TO BE VERIFIED BY CONTRACTOR.
- IF WALLS ARE SPECIFIED IN THIS QUOTE, CONTRACTOR MUST VERIFY ALL DIMENSIONS AND ROUGH OPENING SIZES PRIOR TO CONSTRUCTION OF WALL. ROUGH OPENING SIZES ARE ESTIMATES ONLY. TALL WALL IS DESIGNED FOR VERTICAL LOADS AND DIRECT WIND LOADS ONLY. INLINE LATERAL BRACING OF THE BUILDING DIAPHRAGM IS TO BE ACCOUNTED FOR BY THE BUILDING DESIGNER/ENGINEER.

Van Deurzen and Associates, P.A.  
11011 King Street, Suite 130  
Overland Park, KS 66210  
(913) 451-6305 FAX: (913) 451-1021

This shop drawing has been reviewed for conformance with the design concept and information given in the Contract Documents.

☒ Reviewed with no exceptions noted.  
☐ Reviewed as noted.  
☐ Returned for correction.  
☐ Not Reviewed.

By: JWH Date: 06/22/2022



SECOND FLOOR JOIST PLACEMENT PLAN  
LOT 134 - WOODSIDE RIDGE  
TL22076ATH

Second Floor

I Joist

Label	Description	Width	Depth	Qty	Plies	Pcs	Length
J21	LPI 20 Plus	2.5	9.5	3	2	6	20-0-0
J20	LPI 20 Plus	2.5	9.5			37	16-0-0
J19	LPI 20 Plus	2.5	9.5			18	14-0-0
J18	LPI 20 Plus	2.5	9.5			21	4-0-0

Blocking

Label	Description	Width	Depth	Qty	Plies	Pcs	Length
BLK2	LPI 20 Plus	2.5	9.5			12	2-0-0

Rim Board

Label	Description	Width	Depth	Qty	Plies	Pcs	Length
R2	LP APA Rated OSB 1.125 X 9.5	1.125	9.5			11	12-0-0

LVL/LSL

Label	Description	Width	Depth	Qty	Plies	Pcs	Length
FB15	LP-LVL 2900Fb-2.0E	1.75	9.25	1	2	2	20-0-0
FB14	LP-LVL 2900Fb-2.0E	1.75	9.25	3	2	6	16-0-0
FB10	LP-LVL 2900Fb-2.0E	1.75	9.25			1	16-0-0
FB13	LP-LVL 2900Fb-2.0E	1.75	9.25	1	2	2	14-0-0
FB12	LP-LVL 2900Fb-2.0E	1.75	9.25	1	2	2	12-0-0
FB11	LP-LVL 2900Fb-2.0E	1.75	9.25	2	2	4	6-0-0
FB16	LP-LVL 2900Fb-2.0E	1.75	9.5	1	2	2	14-0-0

Hanger

		Beam/Girder			Supported Member	
Label	Pcs	Description	Skew	Slope	fasteners	fasteners
H11	4	HU410 (Min)			14 16d	6 10d
H12	6	MIU5.12/9 (Min)			16 16d	2 10dx1 1/2
H13	1	HUC410 (Max)			18 16d	10 10d
H14	1	HHUS410			30 16d	10 16d
H15	85	IUS2.56/9.5 (Min)			8 10d	
H16	2	MIU1.81/9 (Min)			16 16d	2 10dx1 1/2

