



December 2, 2022

Mr. David Olson
Streets of West Pryor, LLC
7200 W 132nd Street, #150
Overland Park, Kansas 66213

Re: Long-Term Monitoring Plan Survey Points
Lots 7A (Area A), 7B (Area C), and 7C (Area B)
Mine Remediation at Streets of West Pryor
Lee's Summit, Missouri
Geotechnology Project No. J035637.02

Dear Mr. Olson,

This letter transmits the revised results of settlement monitoring performed on the portions of the Streets West of Pryor project for October 2022. This report has been updated with information provided by the surveyor as documented in the updated Figure 2. For this monitoring period, monitoring of potential ground movements has been accomplished using a combination of surface monitoring points (SMPs) and survey points established on sanitary and storm sewer inlets and/or manholes. These points continue to be surveyed by BHC, Inc. SMP C106 continues to be covered with fill. SMP C109, which was previously covered with construction equipment, has since been uncovered for monitoring. SMP B107 seems to be disturbed since the previous survey after observation of the broken concrete curb surrounding the inlet. This resulted in an anomalous reading during the ninth monitoring results. Additional data points will be added to the monitoring record, as they are collected, and updated results of settlement monitoring will be provided.

Attached to this letter is the updated data for SMPs as shown in the attached Table 1 and graphic plots. Current survey readings were obtained on October 31, 2022, in general accordance with the Long-Term Monitoring Plan (LTMP). Table 1 documents the monitoring events to date. Exhibit 1 presents the graphic plots that depict the data obtained in relation to elapsed time. The installations of the sleeved rod monuments have been completed and elevation data recorded.

As of the current set of data and field observations, the monitoring results do not indicate that settlement has exceeded the limits established in the LTMP. Therefore, the planned readings will continue every two months for the duration of surface construction. The following attachments are included for the current results of the LTMP:

Figure 1	-	Monitoring Plan Locations
Figure 2	-	Monitoring Results from BHC
Table 1	-	Monitoring Point Displacement Summary
Exhibit 1	-	Monitoring Point Graphic Plots

* * * * *



We appreciate the opportunity to provide geotechnical services for this project. If you have a question regarding this letter, or if we may be of additional service to you, please contact the undersigned.

Respectfully submitted,

GEOTECHNOLOGY, LLC

Tanner N. Merz, E.I.
Engineer

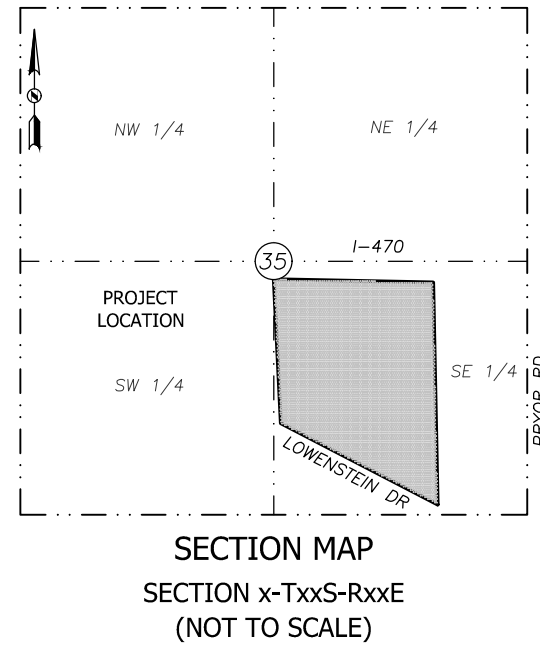
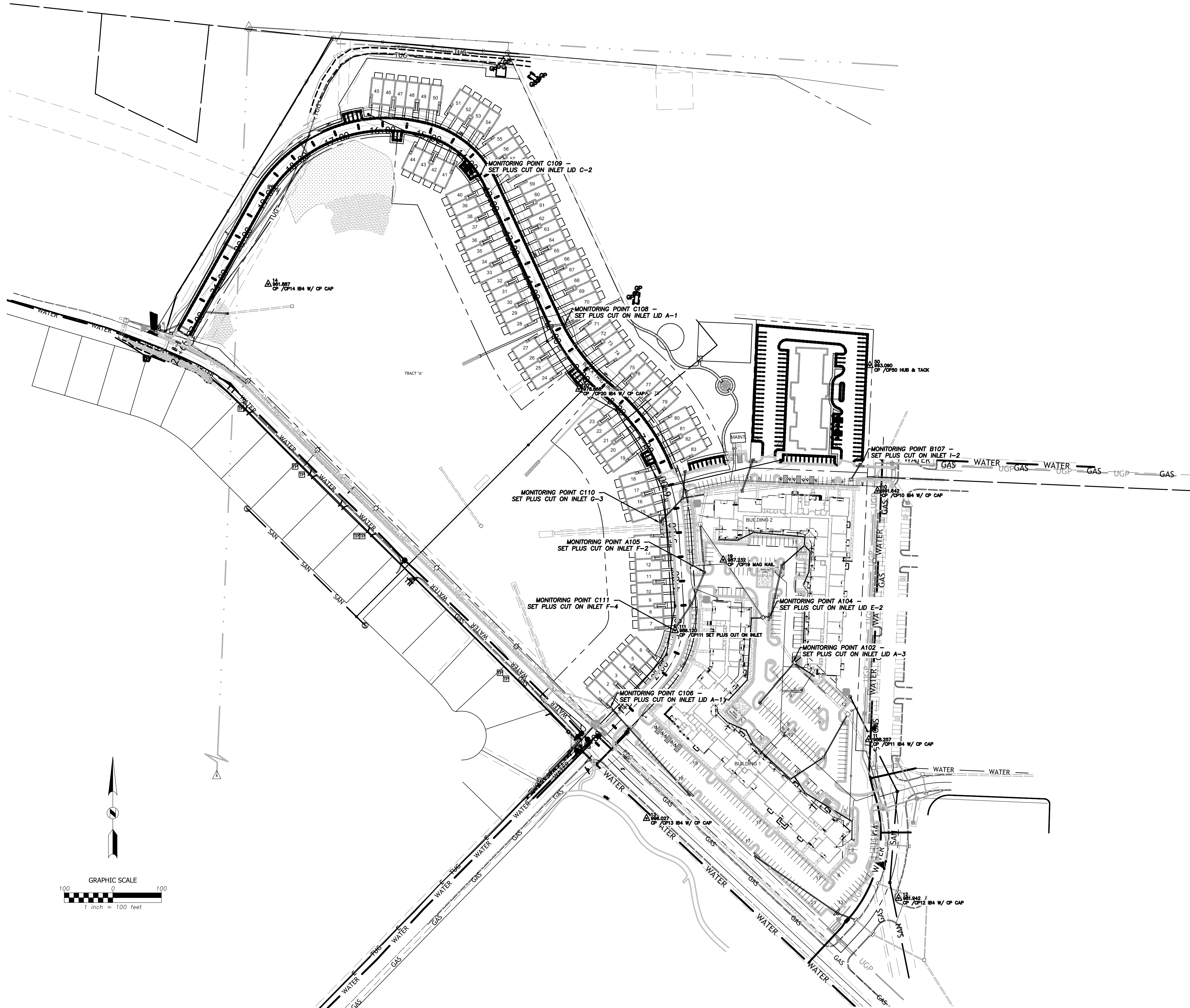
TNM/ALP



Andrea Prince, P.G.
Senior Project Manager

May 10, 2022 -- 11:47am Plotted by: matthew.scheppmann I:\028440 Streets of West Pryor Mine Scan\DWG\Survey\028440-SPRY-MONITOR-EXHIBT.dwg

STREETS OF WEST PRYOR MONITORING EXHIBIT



GENERAL NOTES

1. Basis of Bearings: Initial Monitoring control was derived from GPS Static data collected on several of the Monitoring Control Points and submitted to OPUS for data processing. The OPUS provided data was referenced to the Missouri State Plane Coordinate System, West Zone (NAD83). The coordinates derived from this OPUS solutions were then adjusted to ground using the CAF from the Final Plat of "Streets of West Pryor Lots 1 thru 14, Tracts "A", "B", "C", & "D". Using the CAF from the above mentioned plat allows the monitoring points to be on a similar datum to the proposed site design. The ground coordinates were scaled from zero using the CAF of 0.999990084.
2. The monitoring control and the initial monitoring points were then traversed using a Trimble SX10 instrument and subsequently adjusted using MicroSurvey StarNet Version 9 software. A level run was run through control points 10 thru 13 to assist in establishing the initial monitoring control.
3. Base Line Control Points were intentionally placed off of the site in order to avoid placing them over areas of the mine that are currently being remediated.
4. This monitoring survey is based on field work completed on the date shown in the title block.
5. Monitoring points are labeled to indicate which section of mine remediation zone that they are closest to and a point number to assist in the survey monitoring. Example A100 = "A" indicates the "A" remediation zone and "100" is the survey point used while monitoring.
6. It has been indicated that some of the inlet lids will be moved during the progress of the construction. It has been requested that when the inlets are being adjusted that monitoring will be taken before and after the inlet has been adjusted in order to maintain a viable monitoring point that will be maintained through the monitoring term.

Project No: 028440.00.01		Field Crew: MS, DH		Field Date: 10/13/2021		Drawn By: MS		Issue Date: 10/15/2021		Sheet: 1 OF 1	
Project: Streets of West Pryor Monitoring Exhibit		Client: Monarch Acquisitions LLC		Dave Olson		P.O. Box 24302		Overlaon Park, KS 66283		Description	
Section 35, Township 48, Range 32		Lee's Summit, Jackson County, Missouri		05/09/2022 Updated Monitoring Points and Placement of Additional Monuments		04/12/2022 Updated Monitoring Points and Placement of Additional Monuments		12/16/2021 Second Monitoring & Placement of Additional Monitoring Points		Rev.	
										Date	
										Drawn	
										Checked	

ELC
CIVIL ENGINEERING / SURVEYING / UTILITIES
712 State Avenue, Kansas City, KS 66101
Phone: (913) 371-5300
BKC is a trademark of Bingham, Boushield & Company P.A.

Streets of West Pryor Monitoring Spreadsheet

Initial Monitoring Point Locations Points Set Oct. 12, 2021

Point #	Northing	Easting	Elevation	Location
100	1006796.43	2812899.00	992.88	Inlet
101	1006763.01	2812554.02	982.86	Inlet B-1
102	1006414.57	2812733.04	987.35	Inlet A-3
103	1006322.29	2812351.55	988.07	Inlet A-1

Value Greater than 0.08'

Value Greater than 0.04'

Value Greater than 0.02'

Note: Point's 10-14 on previous exhibits are Control Point's for monitoring and have been removed to simplify exhibit. Point's 100-103 are monitoring points as shown on the exhibit. Monitoring Point #100 is on an Inlet @ NE Corner of Site

First Monitoring Results Dec. 12, 2021

Note: Differences Below Between
Oct. 12, 2021 & Dec. 12, 2021

Point #	Northing Difference	Easting Difference	Elevation Difference	Observed Elevation	Location
2100	-0.03	0.01	-0.04	992.84	
2101	-2.90	-2.00	0.01	982.87	
2102	1.55	-5.17	-0.02	987.33	
See Note Below					
104	1006511.50	2812680.58	987.40		Inlet E-2
105	1006601.94	2812547.13	986.35		Inlet F-2
106	1006319.59	2812353.76	988.24		Inlet A-1

Note: Lid replaced and mark removed on Inlet A-1 after initial monitoring. Point's 104-106 above are new or replacement monitoring points on the site.

Inlet Lids on Structures B-1 and A-3 have been adjusted since the initial monitoring. The new location of points will now be monitored.

Note: The certification on this exhibit is to verify that the horizontal and vertical positions shown hereon were collected under my direct supervision. This certification does not intend to show anything other what is shown on the exhibit. We are not certifying any reason or cause for the differences in the locations or elevations.



Streets of West Pryor Monitoring Spreadsheet

Second Monitoring Results

Feb. 4, 2022

Note: Differences Below Between

Oct. 12, 2021 & Feb. 4, 2022 (Point 100)

Dec. 12, 2021 & Feb. 4, 2022 (Points 101, 102, & 104-106)

Point #	Northing Difference	Easting Difference	Elevation Difference	Observed Elevation	Location
3100	-0.04	-0.01	0.01	992.89	Inlet
3101	-0.03	-0.06	0.06	982.92	Inlet B-1
3102	-0.02	-0.03	0.02	987.37	Inlet A-3
3104	0.00	-0.04	0.04	987.44	Inlet E-2
3105	-0.04	-0.05	0.06	986.41	Inlet F-2
3106	0.02	-0.17	0.04	988.28	Inlet A-1

Note: Differences Below Between

Dec. 12, 2021 & Feb. 4, 2022

3100	-0.01	-0.02	0.05	992.89
3101	-0.03	-0.06	0.05	982.92
3102	-0.02	-0.03	0.04	987.37

Third Monitoring Results

3/2/2022

Note: Differences Below Between

Oct. 12, 2021 & March 2, 2022 (Point 100)

Dec. 12, 2021 & March 2, 2022 (Points 101, 102, & 104-106)

Point #	Northing Difference	Easting Difference	Elevation Difference	Observed Elevation	Location
4100	-0.03	-0.01	-0.04	992.84	Inlet
4101	-0.01	-0.39	0.01	982.87	Inlet B-1
4102	-0.02	-0.01	0.02	987.33	Inlet A-3
4104	0.01	-0.08	0.00	987.40	Inlet E-2
4105	0.00	0.01	0.01	986.36	Inlet F-2
4106	0.04	-0.10	-0.03	988.21	Inlet A-1

Note: Differences Below Between

Feb. 4, 2022 & March 2, 2022

4100	0.01	0.00	-0.05	992.84
4101	0.02	-0.33	-0.05	982.87
4102	0.00	0.02	-0.04	987.33
4104	0.01	-0.05	-0.04	987.40
4105	0.05	0.06	-0.05	986.36
4106	0.02	0.06	-0.07	988.21

Note: The certification on this exhibit is to verify that the horizontal and vertical positions shown hereon were collected under my direct supervision. This certification does not intend to show anything other what is shown on the exhibit. We are not certifying any reason or cause for the differences in the locations or elevations.



Streets of West Pryor Monitoring Spreadsheet

Fourth Monitoring Results

4/8/2022

Note: Differences Below Between

Dec. 12, 2021 & April 8, 2022

Point #	Northing Difference	Easting Difference	Elevation Difference	Observed Elevation	Location
Inlet Adjusted- Removed from Monitoring					
Inlet Adjusted- Removed from Monitoring					
5102	-3.35	1.84	1.09	988.44	Inlet A-3
Based on above results, Inlet A-3 has shifted since last monitoring					
5104	0.00	-0.04	0.04	987.44	Inlet E-2
5105	-0.01	-0.02	0.02	986.37	Inlet F-2
5106	0.02	-0.09	0.00	988.24	Inlet A-1
107	1006824.68	2812868.80	990.01		Inlet I-2
108	1007111.59	2812258.87	979.05		Inlet A-1
109	1007411.19	2812081.44	975.28		Inlet C-2
110	1006703.64	2812454.33	984.07		Inlet G-3

Note: Point's 107-110 above are new
or replacement monitoring points on the site.

Note: Differences Below Between

March 2, 2022 & April 8, 2022

Inlet Adjusted- Removed from Monitoring					
Inlet Adjusted- Removed from Monitoring					
5102	-3.33	1.85	1.11	988.44	
5104	-0.01	0.04	0.04	987.44	
5105	-0.01	-0.02	0.01	986.37	
5106	-0.03	0.02	0.03	988.24	



Note: The certification on this exhibit is to verify that the horizontal
and vertical positions shown hereon were collected under my
direct supervision. This certification does not intend to show anything
other what is shown on the exhibit. We are not certifying
any reason or cause for the differences in the locations or elevations

Streets of West Pryor Monitoring Spreadsheet

Fifth Monitoring Results

5/9/2022

Note: Differences Below Between

Dec. 12, 2021 & May 9, 2022 (Points 104 - 106)

April 8, 2022 & May 9, 2022 (Points 102 & 107 - 110)

Point #	Northing	Easting	Elevation Difference	Observed Elevation	Location
6102	See Note		0.00	988.44	Inlet A-3
6104	See Note		0.01	987.41	Inlet E-2
6105	See Note		0.01	986.36	Inlet F-2
6106	See Note		0.03	988.27	Inlet A-1
6107	See Note		-0.02	989.99	Inlet I-2
6108	See Note		0.03	979.08	Inlet A-1
6109	See Note		0.00	975.28	Inlet C-2
6110	See Note		0.00	984.07	Inlet G-3
111	1006482.19	2812485.01	986.12		Inlet F-4

Note: Point #111 is a new monitoring point.

Note: Differences Below Between

April 8, 2022 & May 9, 2022

6104		-0.03	987.41	Inlet E-2
6105		-0.01	986.36	Inlet F-2
6106		0.03	988.27	Inlet A-1



8/01/2022

Note: This monitoring exhibit represents a shift in the data collection method for the monitoring at the Streets of West Pryor site. Long term monitoring will concentrate on the vertical differences between observations, unless otherwise noted.

Note: The certification on this exhibit is to verify the vertical positions shown hereon were collected under my direct supervision. This certification does not intend to show anything other what is shown on the exhibit. We are not certifying any reason or cause for the differences in elevations.

Streets of West Pryor Monitoring Spreadsheet

Sixth Monitoring Results

6/8/2022

Note: Differences Below Between

Dec. 12, 2021 & June 8, 2022 (Point's 104-106)

April 8, 2022 & June 8, 2022 (Point's 102, 107-110)

May 9, 2022 & June 8, 2022 (Point #111)

<u>Point #</u>	<u>Northing</u>	<u>Easting</u>	<u>Elevation</u> <u>Difference</u>	<u>Observed</u> <u>Elevation</u>	<u>Location</u>
7102			0.01	988.45	Inlet A-3
7104			0.02	987.42	Inlet E-2
7105			0.02	986.37	Inlet F-2
7106			-0.02	988.26	Inlet A-1
7107			-0.01	990.00	Inlet I-2
7108			0.01	979.06	Inlet A-1
7109			-0.03	975.25	Inlet C-2
7110			-0.02	984.05	Inlet G-3
7111			-0.02	986.10	Inlet F-4

Note: Differences Below Between

May 9, 2022 & June 8, 2022

7102			0.01	988.45
7104			0.01	987.42
7105			0.01	986.37
7106			-0.01	988.26
7107			0.01	990.00
7108			-0.02	979.06
7109			-0.03	975.25
7110			-0.02	984.05
7111			-0.02	986.10



Note: This monitoring exhibit continues a shift in the data collection method for the monitoring at the Streets of West Pryor site. Long term monitoring will concentrate on the vertical differences between observations, unless otherwise noted.

Note: The certification on this exhibit is to verify the vertical positions shown hereon were collected under my direct supervision. This certification does not intend to show anything other what is shown on the exhibit. We are not certifying any reason or cause for the differences in elevations.

Streets of West Pryor Monitoring Spreadsheet

Seventh Monitoring Results

7/21/2022

Note: Differences Below Between

Dec. 12, 2021 & July 21, 2022 (Point's 104-106)

April 8, 2022 & July 21, 2022 (Point's 102, 107-110)

May 9, 2022 & July 21, 2022 (Point #111)

Point #	Northing	Easting	Elevation Difference	Observed Elevation	Location
8102			0.03	988.47	Inlet A-3
8104			0.05	987.45	Inlet E-2
8105			0.04	986.39	Inlet F-2
8106	Inlet covered with fill				Inlet A-1
8107			-0.03	989.98	Inlet I-2
8108			0.01	979.06	Inlet A-1
8109			-0.02	975.26	Inlet C-2
8110			-0.05	984.02	Inlet G-3
8111			-0.02	986.10	Inlet F-4

Note: Differences Below Between

June 8, 2022 & July 21, 2022

8102			0.02	988.47	Inlet A-3
8104			-0.03	987.45	Inlet E-2
8105			0.02	986.39	Inlet F-2
8106	Inlet covered with fill				Inlet A-1
8107			-0.02	989.98	Inlet I-2
8108			0.00	979.06	Inlet A-1
8109			0.01	975.26	Inlet C-2
8110			-0.03	984.02	Inlet G-3
8111			0.00	986.10	Inlet F-4



Note: This monitoring exhibit continues a shift in the data collection method for the monitoring at the Streets of West Pryor site. Long term monitoring will concentrate on the vertical differences between observations, unless otherwise noted.

Note: The certification on this exhibit is to verify the vertical positions shown hereon were collected under my direct supervision. This certification does not intend to show anything other what is shown on the exhibit. We are not certifying any reason or cause for the differences in elevations.

Streets of West Pryor Monitoring Spreadsheet

Eighth Monitoring Results

9/14/2022

Note: Differences Below Between

Dec. 12, 2021 & Sept 14, 2022 (Point's 104-106)

April 8, 2022 & Sept 14, 2022 (Point's 102, 107-110)

May 9, 2022 & Sept 14, 2022 (Point #111)

<u>Point #</u>	<u>Northing</u>	<u>Easting</u>	<u>Elevation Difference</u>	<u>Observed Elevation</u>	<u>Location</u>
9102			0.01	988.45	Inlet A-3
9104			0.03	987.43	Inlet E-2
9105			0.04	986.39	Inlet F-2
		Inlet covered with fill			Inlet A-1
9107			-0.03	989.98	Inlet I-2
9108			0.01	979.06	Inlet A-1
		Inlet covered with Construction Supplies			Inlet C-2
9110			-0.06	984.01	Inlet G-3
9111			-0.02	986.10	Inlet F-4

Note: Differences Below Between

July 21, 2022 & Sept 14, 2022

9102			-0.02	988.45	Inlet A-3
9104			-0.02	987.43	Inlet E-2
9105			0.00	986.39	Inlet F-2
		Inlet covered with fill			Inlet A-1
9107			0.00	989.98	Inlet I-2
9108			0.00	979.06	Inlet A-1
		Inlet covered with Construction Supplies			Inlet C-2
9110			-0.01	984.01	Inlet G-3
9111			0.00	986.10	Inlet F-4



Note: Long term monitoring will concentrate on the vertical differences between observations, unless otherwise noted.

Note: The certification on this exhibit is to verify the vertical positions shown hereon were collected under my direct supervision. This certification does not intend to show anything other what is shown on the exhibit. We are not certifying any reason or cause for the differences in elevations.

Streets of West Pryor Monitoring Spreadsheet

Ninth Monitoring Results

10/31/2022

Note : Differences Below Between

Dec. 12, 2021 & Oct 31, 2022 (Point's 104-106)

April 8, 2022 & Oct 31, 2022 (Point's 102, 107-110)

May 9, 2022 & Oct 31, 2022 (Point #111)

<u>Point #</u>	<u>Elevation Difference</u>	<u>Observed Elevation</u>	<u>Location</u>
10102	0.01	988.45	Inlet A-3
10104	0.04	987.44	Inlet E-2
10105	0.04	986.39	Inlet F-2
			Inlet A-1
10107	0.10	990.11	Inlet I-2
10108	0.00	979.05	Inlet A-1
10109	-0.02	975.26	Inlet C-2
10110	-0.07	984.00	Inlet G-3
10111	-0.03	986.09	Inlet F-4

Note: Long term monitoring will concentrate on the vertical differences between observations, unless otherwise noted.

Note: Differences Below Between

Sept 14, 2022 & Oct 31, 2022 (Except #109; July 21, 2022 & Oct 31, 2022)

10102	0.00	988.45
10104	0.01	987.44
10105	0.00	986.39
10107	0.13	990.11
10108	-0.01	979.05
10109	0.00	975.26
10110	-0.01	984.00
10111	-0.01	986.09

Note: The certification on this exhibit is to verify the vertical positions shown hereon were collected under my direct supervision. This certification does not intend to show anything other what is shown on the exhibit. We are not certifying any reason or cause for the differences in elevations.

Long Term Monitoring Monuments

Initial Elevation Readings	975.06	LTM-01
Shown at Right	977.87	LTM-02
	984.31	LTM-03
	987.51	LTM-04
	985.19	LTM-05
	982.01	LTM-06
	971.82	LTM-07





Monitoring Point Displacement Summary
Streets West of Pryor
Lee's Summit Missouri
Geotechnology Project No. J035637.02

Displacement for A100

Date	Elevation Change (ft)	Elevation (ft)	Time Elapsed (yr)	Elevation Change (in)	Total Elevation Change (in)	Rate (in/yr)	Remarks
10/12/2021	NA	992.88	NA	NA	NA	NA	
12/12/2021	-0.03	992.84	0.17	-0.48	-0.48	-2.87	
2/4/2022	-0.01	992.89	0.15	0.60	0.12	4.06	
3/2/2022	0.01	992.84	0.07	-0.60	-0.48	-8.42	Inlet point moved, new baseline set
4/8/2022	#N/A	#N/A	#N/A	#N/A	#N/A	#N/A	Monitor point removed due to adjusting inlet

Displacement for A101

Date	Elevation Change (ft)	Elevation (ft)	Time Elapsed (yr)	Elevation Change (in)	Total Elevation Change (in)	Rate (in/yr)	Remarks
10/12/2021	NA	982.86	NA	NA	NA	NA	
12/12/2021	0.01	982.87	0.17	0.12	0.12	0.72	Inlet lid adjusted after initial monitoring
2/4/2022	0.05	982.92	0.15	0.60	0.72	4.06	
3/2/2022	-0.05	982.87	0.07	-0.60	0.12	-8.42	Inlet point moved, new baseline set
4/8/2022	#N/A	#N/A	#N/A	#N/A	#N/A	NA	Monitor point removed due to adjusting inlet

Displacement for A102

Date	Elevation Change (ft)	Elevation (ft)	Time Elapsed (yr)	Elevation Change (in)	Total Elevation Change (in)	Rate (in/yr)	Remarks
10/12/2021	NA	987.35	NA	NA	NA	NA	
12/12/2021	-0.02	987.33	0.17	-0.24	-0.24	-1.44	Inlet lid adjusted after initial monitoring
2/4/2022	0.04	987.37	0.15	0.48	0.24	3.24	
3/2/2022	-0.04	987.33	0.07	-0.48	-0.24	-6.74	Inlet point moved, new baseline set
4/8/2022	1.11	988.44	0.10	13.32	13.08	131.40	Inlet A-3 shifted since last monitoring
5/9/2022	0.00	988.44	0.08	0.00	13.08	0.00	Switch to vertical monitoring only
6/8/2022	0.01	988.45	0.08	0.12	13.20	1.46	
7/21/2022	0.02	988.47	0.12	0.24	13.44	2.04	
9/14/2022	-0.02	988.45	0.15	-0.24	13.20	-1.59	
10/31/2022	0	988.45	0.13	0.00	13.20	0.00	

Displacement for C103

Date	Elevation Change (ft)	Elevation (ft)	Time Elapsed (yr)	Elevation Change (in)	Total Elevation Change (in)	Rate (in/yr)	Remarks
10/12/2021	NA	NA	NA	NA	NA	NA	
12/12/2021	NA	NA	NA	NA	NA	NA	Removed after initial monitoring

Displacement for A104

Date	Elevation Change (ft)	Elevation (ft)	Time Elapsed (yr)	Elevation Change (in)	Total Elevation Change (in)	Rate (in/yr)	Remarks
12/12/2021	NA	987.40	#N/A	#N/A	#N/A	#N/A	
2/4/2022	0.04	987.44	0.15	0.48	0.48	3.24	
3/2/2022	-0.04	987.40	0.07	-0.48	0.00	-6.74	Inlet point moved, new baseline set
4/8/2022	0.04	987.44	0.10	0.48	0.48	4.74	
5/9/2022	-0.03	987.41	0.08	-0.36	0.12	-4.24	Switch to vertical monitoring only
6/8/2022	0.01	987.42	0.08	0.12	0.24	1.46	
7/21/2022	0.03	987.45	0.12	0.36	0.60	3.06	
9/14/2022	-0.02	987.43	0.15	-0.24	0.36	-1.59	
10/31/2022	0.01	987.44	0.13	0.12	0.48	0.93	



Monitoring Point Displacement Summary
Streets West of Pryor
Lee's Summit Missouri
Geotechnology Project No. J035637.02

Displacement for A105

Date	Elevation Change (ft)	Elevation (ft)	Time Elapsed (yr)	Elevation Change (in)	Total Elevation Change (in)	Rate (in/yr)	Remarks
12/12/2021	NA	986.35	NA	NA	NA	NA	
2/4/2022	0.06	986.41	0.15	0.72	0.72	4.87	
3/2/2022	-0.05	986.36	0.07	-0.60	0.12	-8.42	Inlet point moved, new baseline set
4/8/2022	0.01	986.37	0.10	0.12	0.24	1.18	
5/9/2022	-0.01	986.36	0.08	-0.12	0.12	-1.41	Switch to vertical monitoring only
6/8/2022	0.01	986.37	0.08	0.12	0.24	1.46	
7/21/2022	0.02	986.39	0.12	0.24	0.48	2.04	
9/14/2022	0.00	986.39	0.15	0.00	0.48	0.00	
10/31/2022	0	986.39	0.13	0.00	0.48	0.00	

Displacement for C106

Date	Elevation Change (ft)	Elevation (ft)	Time Elapsed (yr)	Elevation Change (in)	Total Elevation Change (in)	Rate (in/yr)	Remarks
12/12/2021	NA	988.24	NA	NA	NA	NA	
2/4/2022	0.04	988.28	0.15	0.48	0.48	3.24	
3/2/2022	-0.07	988.21	0.07	-0.84	-0.36	-11.79	Inlet point moved, new baseline set
4/8/2022	0.03	988.24	0.10	0.36	0.00	3.55	
5/9/2022	0.03	988.27	0.08	0.36	0.36	4.24	Switch to vertical monitoring only
6/8/2022	-0.01	988.26	0.08	-0.12	0.24	-1.46	
7/21/2022	NA	NA	NA	NA	NA	NA	Inlet covered with fill
9/14/2022	NA	NA	NA	NA	NA	NA	Inlet covered with fill
10/31/2022	NA	NA	NA	NA	NA	NA	Inlet covered with fill

Displacement for B107

Date	Elevation Change (ft)	Elevation (ft)	Time Elapsed (yr)	Elevation Change (in)	Total Elevation Change (in)	Rate (in/yr)	Remarks
4/8/2022	NA	990.01	NA	NA	NA	NA	
5/9/2022	-0.02	989.99	0.08	-0.24	-0.24	-2.83	Switch to vertical monitoring only
6/8/2022	0.01	990.00	0.08	0.12	-0.12	1.46	
7/21/2022	-0.02	989.98	0.12	-0.24	-0.36	-2.04	
9/14/2022	0.00	989.98	0.15	0.00	-0.36	0.00	
10/31/2022	0.13	990.11	0.13	1.56	1.20	12.11	Broken concrete curbs around inlet

Displacement for C108

Date	Elevation Change (ft)	Elevation (ft)	Time Elapsed (yr)	Elevation Change (in)	Total Elevation Change (in)	Rate (in/yr)	Remarks
4/8/2022	NA	979.05	NA	NA	NA	NA	
5/9/2022	0.03	979.08	0.08	0.36	0.36	4.24	Switch to vertical monitoring only
6/8/2022	-0.02	979.06	0.08	-0.24	0.12	-2.92	
7/21/2022	0.00	979.06	0.12	0.00	0.12	0.00	
9/14/2022	0.00	979.06	0.15	0.00	0.12	0.00	
10/31/2022	-0.01	979.05	0.13	-0.12	0.00	-0.93	

Displacement for C109

Date	Elevation Change (ft)	Elevation (ft)	Time Elapsed (yr)	Elevation Change (in)	Total Elevation Change (in)	Rate (in/yr)	Remarks
4/8/2022	NA	975.28	NA	NA	NA	NA	
5/9/2022	0	975.28	0.08	0.00	0.00	0.00	Switch to vertical monitoring only
6/8/2022	-0.03	975.25	0.08	-0.36	-0.36	-4.38	
7/21/2022	0.01	975.26	0.12	0.12	-0.24	1.02	
9/14/2022	NA	NA	NA	NA	NA	NA	Inlet covered with construction supplies
10/31/2022	0	975.26	0.28	0.00	-0.24	0.00	Construction supplies removed



Monitoring Point Displacement Summary
Streets West of Pryor
Lee's Summit Missouri
Geotechnology Project No. J035637.02

Displacement for C110

Date	Elevation Change (ft)	Elevation (ft)	Time Elapsed (yr)	Elevation Change (in)	Total Elevation Change (in)	Rate (in/yr)	Remarks
4/8/2022	NA	984.07	NA	NA	NA	NA	
5/9/2022	0	984.07	0.08	0.00	0.00	0.00	Switch to vertical monitoring only
6/8/2022	-0.02	984.05	0.08	-0.24	-0.24	-2.92	
7/21/2022	-0.03	984.02	0.12	-0.36	-0.60	-3.06	
9/14/2022	-0.01	984.01	0.15	-0.12	-0.72	-0.80	
10/31/2022	-0.01	984.00	0.13	-0.12	-0.84	-0.93	

Displacement for C111

Date	Elevation Change (ft)	Elevation (ft)	Time Elapsed (yr)	Elevation Change (in)	Total Elevation Change (in)	Rate (in/yr)	Remarks
5/9/2022	NA	986.12	NA	NA	NA	NA	Monitor point installed
6/8/2022	-0.02	986.10	0.08	-0.24	-0.24	-2.92	
7/21/2022	0.00	986.10	0.12	0.00	-0.24	0.00	
9/14/2022	0.00	986.10	0.15	0.00	-0.24	0.00	
10/31/2022	-0.01	986.09	0.13	-0.12	-0.36	-0.93	

*Negative values indicate a decrease in elevation

