



RELEASED FOR
CONSTRUCTION
As Noted on Plans Review
Development Services Department
Lee's Summit, Missouri
12/02/2022

LSR7 Robotics, GiC & Phys Education: Construction Documents

owner:
Lee's Summit R-7 School District
301 NE Tudor Road
Lee's Summit, MO 64086

architect:
Multistudio
4200 Pennsylvania Avenue
Kansas City, MO 64111
816.931.6655
www.multi.studio

civil engineer:
Kaw Valley Engineering
14700 West 114th Terrace
Lenexa, KS 66215
913.485.0318
kveng.com

MEPFT/Code::
Henderson Engineers
8345 Lenexa Drive, Suite 300
Lenexa, KS 66214
816.742.5000
www.hendersonengineers.com

structural engineer:
Bob D. Campbell & Company,
4338 Belleview
Kansas City, MO 64111
816.531.4144
www.bdc-engrs.com

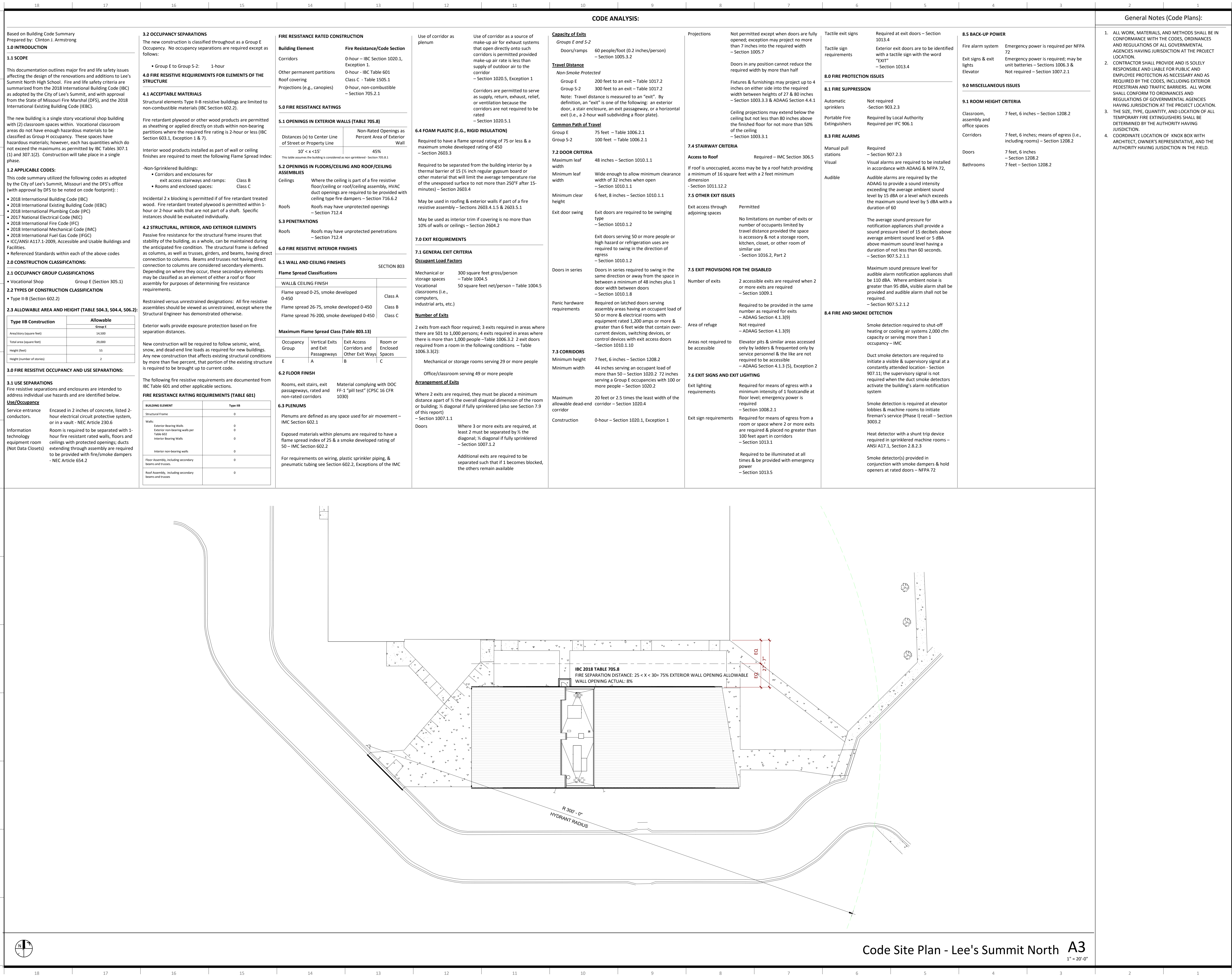
LSN: 901 NE Douglas St.,
Lee's Summit MO 64086

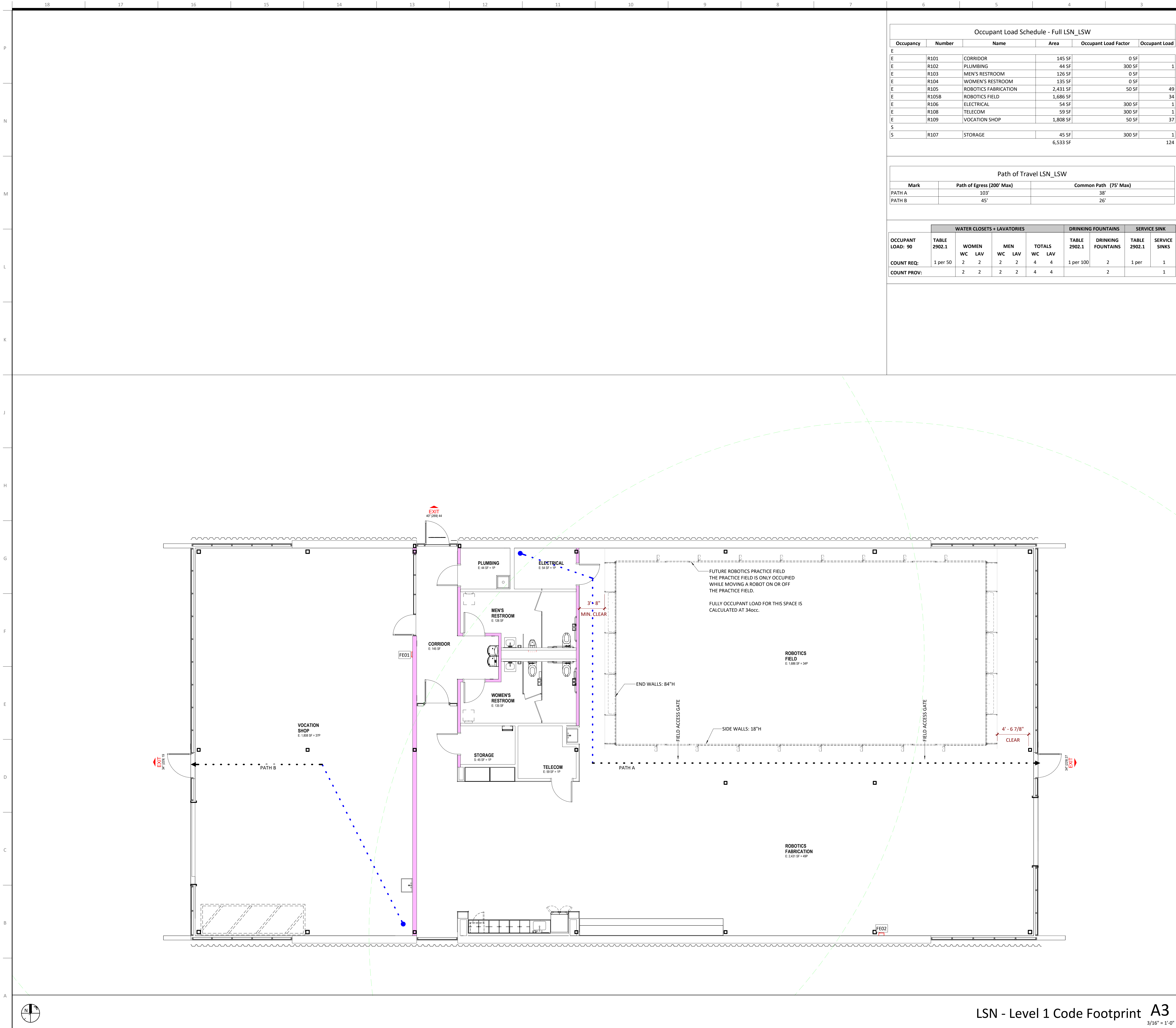
Project Number: 0121-0100
Issue Date: September 9, 2022

multistudio
the evolution of gould evans

Index of Drawings & General Project Notes

G001





Occupant Load Schedule - Full LSN_LSW					
Occupancy	Number	Name	Area	Occupant Load Factor	Occupant Load
E					
E	R101	CORRIDOR	145 SF	0 SF	
E	R102	PLUMBING	44 SF	300 SF	1
E	R103	MEN'S RESTROOM	126 SF	0 SF	
E	R104	WOMEN'S RESTROOM	135 SF	0 SF	
E	R105	ROBOTICS FABRICATION	2,431 SF	50 SF	49
E	R105B	ROBOTICS FIELD	1,686 SF		34
E	R106	ELECTRICAL	54 SF	300 SF	1
E	R108	TELECOM	59 SF	300 SF	1
E	R109	VOCATION SHOP	1,808 SF	50 SF	37
S					
S	R107	STORAGE	45 SF	300 SF	1
			6,533 SF		124

Path of Travel LSN_LSW		
Mark	Path of Egress (200' Max)	Common Path (75' Max)
PATH A	103'	38'
PATH B	45'	26'

	WATER CLOSETS + LAVATORIES						DRINKING FOUNTAINS		SERVICE SINK		
OCCUPANT LOAD: 90	TABLE 2902.1	WOMEN		MEN		TOTALS	TABLE 2902.1	DRINKING FOUNTAINS	TABLE 2902.1	SERVICE SINKS	
		WC	LAV	WC	LAV						WC
COUNT REQ:	1 per 50	2	2	2	2	4	4	1 per 100	2	1 per	1
COUNT PROV:		2	2	2	2	4	4		2		1

General Notes (Code Plans):

- ALL WORK, MATERIALS, AND METHODS SHALL BE IN CONFORMANCE WITH THE CODES, ORDINANCES AND REGULATIONS OF ALL GOVERNMENTAL AGENCIES HAVING JURISDICTION AT THE PROJECT LOCATION.
- CONTRACTOR SHALL PROVIDE AND IS SOLELY RESPONSIBLE AND LIABLE FOR PUBLIC AND EMPLOYEE PROTECTION AS NECESSARY AND AS REQUIRED BY THE CODES, INCLUDING EXTERIOR PEDESTRIAN AND TRAFFIC BARRIERS. ALL WORK SHALL CONFORM TO ORDINANCES AND REGULATIONS OF GOVERNMENTAL AGENCIES HAVING JURISDICTION AT THE PROJECT LOCATION.
- THE SIZE, TYPE, QUANTITY, AND LOCATION OF ALL TEMPORARY FIRE EXTINGUISHERS SHALL BE DETERMINED BY THE AUTHORITY HAVING JUISDICTION.
- COORDINATE LOCATION OF KNOX BOX WITH ARCHITECT, OWNER'S REPRESENTATIVE, AND THE AUTHORITY HAVING JUISDICTION IN THE FIELD.

Code Plan Legend:

Egress Path of Travel

Distance to Exit
Common Path of Travel Distance
50' CPT

Egress Point

Maximum # of Occupants (by width)
Required # of Occupants

Stair Egress

Stair #1 | 4'-0"

Maximum # of Occupants (by width)
Required # of Occupants

Occupancy Tag

Room name
Occupancy Group
Area
Occupant Load

Fire Extinguisher Radius

75' Typ

Fire Extinguisher Symbol

FE

1-Hour: Fire Rated Assembly

2-Hour: Fire Rated Assembly

3-Hour: Fire Rated Assembly

4-Hour: Fire Rated Assembly

Smoke Barrier

Smoke Partition

Design No. U419

Nonbearing Wall Ratings — 1, 2, 3 or 4 Hr (See Items 3 & 4)

For Number of Layers and Hourly Ratings See Item 4

1

2

3

4

1. Floor and Ceiling Runners — (Not shown) — Channel shaped, fabricated from min 25 MSG, min 20 MSG when Item 4A is used, corrosion-protected steel, min width to accommodate stud size, with min 1 in. long legs, attached to floor and ceiling with fasteners 24 in. OC, max.

2. Steel Studs — Channel shaped, fabricated from min 25 MSG, min 20 MSG when Item 4A is used, corrosion-protected steel, min width as indicated under Item 4, min 1-1/4 in. flanges and 1/4 in. return, spaced a max of 24 in. OC. Studs to be cut 3/8 to 3/4 in. less than assembly height.

3. Batts and Blankets* — (Required as indicated under Item 4) — Mineral wool batts, friction fitted between studs and runners. Min trim thickness as indicated under Item 4. See Batts and Blankets (BNNV or BZJZ) Categories for names of Classified companies.

3A. Batts and Blankets* — (Optional) — Placed in stud cavities, any glass fiber or mineral wool insulation bearing the UL Classification Marking as to Surface Burning Characteristics and Fire Retardance. See Batts and Blankets (BNNV or BZJZ) Categories for names of Classified companies.

4. Gypsum Board* — Gypsum panels with beveled, square or tapered edges, applied vertically or horizontally. Vertical joints centered over studs and staggered one stud cavity on opposite sides of studs. Vertical joints in adjacent layers (multilayer system) staggered one stud cavity. Horizontal joints need not be backed by steel framing. Horizontal edge joints and horizontal butt joints on opposite sides of studs need not be staggered. Horizontal edge joints and horizontal butt joints in adjacent layers (multilayer system) staggered a min of 12 in. The thickness and number of layers for the 1 hr, 2 hr, 3 hr and 4 hr ratings are as follows:
Wallboard Protection on Each Side of Wall

Rating

Min Stud Depth

No. of Layers & Thickness

Min Thickness of Insulation (Item 3)

1 hr

2 hr

3 hr

4 hr

4A. Gypsum Board* — (As an alternate to Item 4) — 5/8 in. thick gypsum panels, installed as described in Item 4 with Type S-12 steel screws. The length and spacing of the screws as specified under Item 5.

4B. Gypsum Board* — (As an alternate to Items 4 and 4A) — 5/8 in. thick, 2 in. wide, tongue and groove edge, applied horizontally as the outer layer to one side of the assembly. Secured as described in Item 5. Joint covering Item 5 not required.

5. Fasteners — (Not shown) — Type S or S-12 steel screws used to attach panels to studs (Item 2) or furring channels (Item 6). Single layer systems: 1 in. long for 1/2 and 5/8 in. thick panels or 1-1/4 in. long for 3/4 in. thick panels; spaced 8 in. OC when panels are applied horizontally and 16 in. OC along vertical and bottom edges and 12 in. OC in the field when panels are applied vertically. Two layer systems: First layer: 1 in. long for 1/2 and 5/8 in. thick panels or 1-1/4 in. long for 3/4 in. thick panels; spaced 16 in. OC. Second layer: 1-5/8 in. long for 1/2 in., 5/8 in. thick panels; spaced 24 in. OC. Third layer: 2-1/4 in. long for 1/2 in., 5/8 in. thick panels; spaced 24 in. OC. Fourth layer: 2-5/8 in. long for 1/2 in., 5/8 in. thick panels; spaced 24 in. OC. Screws offset min 6 in. from layer below. Four-layer systems: First layer: 1 in. long for 1/2 in., 5/8 in. thick panels; spaced 24 in. OC. Second layer: 1-5/8 in. long for 1/2 in., 5/8 in. thick panels; spaced 24 in. OC. Third layer: 2-1/4 in. long for 1/2 in., 5/8 in. thick panels or 2-5/8 in. long for 3/4 in. thick panels; spaced 24 in. OC. Fourth layer: 2-5/8 in. long for 1/2 in., 5/8 in. thick panels or 3 in. long for 3/4 in. thick panels; spaced 12 in. OC. Screws offset min 6 in. from layer below.

6. Furring Channels — (Optional, not shown, for single or double layer systems) — Resilient furring channels fabricated from min 25 MSG, corrosion-protected steel, spaced vertically a max of 24 in. OC. Flange portion attached to each intersecting stud with 1/2 in. long Type S-12 steel screws. Not for use with Item 4A.

7. Joint Tape and Compound — Vinyl or caulk, dry or premixed joint compound applied in two coats to joints and screw heads of outer layers. Paper tape, min 2 in. wide, embedded in first layer of compound over all joints of outer layer panels. Paper tape and joint compound may be omitted when gypsum panels are supplied with a square edge.

8. Siding, Brick or Stone — (Optional, not shown) — A veneer of vinyl or steel siding, brick veneer or stone, meeting the requirements of local code agencies, installed over gypsum panels. Bricks veneer attached to studs with corrugated metal wall ties attached to each stud and screws, not more than one inch above course of brick.

9. Caulking and Sealant* — (Optional, not shown) — A bead of acoustical sealant applied around the partition perimeter for sound control.

*Bearing the UL Classification Mark.

multistudio
the evolution of gould evans

LSR7 Robotics, GiC & Phys Education

LSN: 901 NE Douglas St., Lee's Summit MO 64086
LSW: 2600 SW Ward Rd, Lee's Summit MO 64082
LSHS: 400 SE Blue Pkwy, Lee's Summit MO 64063

Project Number: 0121-0100

owner: Lee's Summit R-7 School
301 NE Tudor Road
Lee's Summit, MO 64086
architect: Multistudio
4200 Pennsylvania
Kansas City, MO 64111
816.931.6655
multi.studio

civil engineer: Kaw Valley Engineering
14700 West 114th Terrace
Lenexa, KS 66215
913.485.0318
kveg.com
structural engineer: Bob D. Campbell &
4338 Bellevue
Kansas City, MO 64111
816.531.4144
www.bdc-engrs.com

MEP/T/Code: Henderson Engineers
8345 Lenexa Drive, Suite 300
Lenexa, KS 66214
816.742.5000
www.hendersonengineers.com

Issue Date: September 9, 2022

Revisions

NUMBER	DESCRIPTION	DATE
--------	-------------	------

RELEASED FOR CONSTRUCTION
As Noted on Plans Review
Development Services Department
Lee's Summit, Missouri
12/02/2022

UNLESS A PROFESSIONAL SEAL WITH SIGNATURE AND DATE IS AFFIXED, THIS DOCUMENT IS PRELIMINARY AND IS NOT INTENDED FOR CONSTRUCTION, RECORDING PURPOSES OR IMPLEMENTATION.



Code Plan

G101

LEE'S SUMMIT NORTH HIGH SCHOOL - ROBOTICS BUILDING
GENERAL LAYOUT SHEET
901 NE DOUGLAS ST, LEE'S SUMMIT, MO 64086
SECTION 31 - TOWNSHIP 48 N - RANGE 31 W

Lee's Summit Robotics,
GIC & Phys Educaiton

LSN: 901 NE Douglas St., Lee's Summit MO
64086
LSW: 2600 SW Ward Rd, Lee's Summit MO
64082
LSHS: 400 SE Blue Pkwy, Lee's Summit MO 64063

Project Number: 0121-0100

owner:
Lee's Summit R-7 School
301 NE Tudor Road
Lee's Summit, MO 64086

architect:
Multistudio
4200 Pennsylvania
Kansas City, MO 64111
816.931.6655
multi-studio

civil engineer:
Kaw Valley Engineering
14700 West 114th Terrace
Lenexa, KS 66215
913.485.0318
kveng.com

structural engineer:
Bob D. Campbell &
4338 Bellevue
Kansas City, MO 64111
816.531.4144
www.bdc-engrs.com

MEP/IT/Code:
Henderson Engineers
8345 Lenexa Drive, Suite
300
Lenexa, KS 66214
816.742.5000
www.hendersonengineers.com

Issue Date: September 9, 2022

NUMBER	DESCRIPTION	DATE
1	AS1 01 - CODE COMMENTS	11/22/2022

RELEASED FOR
CONSTRUCTION
As Noted on Plans Review
Development Services Department
Lee's Summit, Missouri
12/02/2022

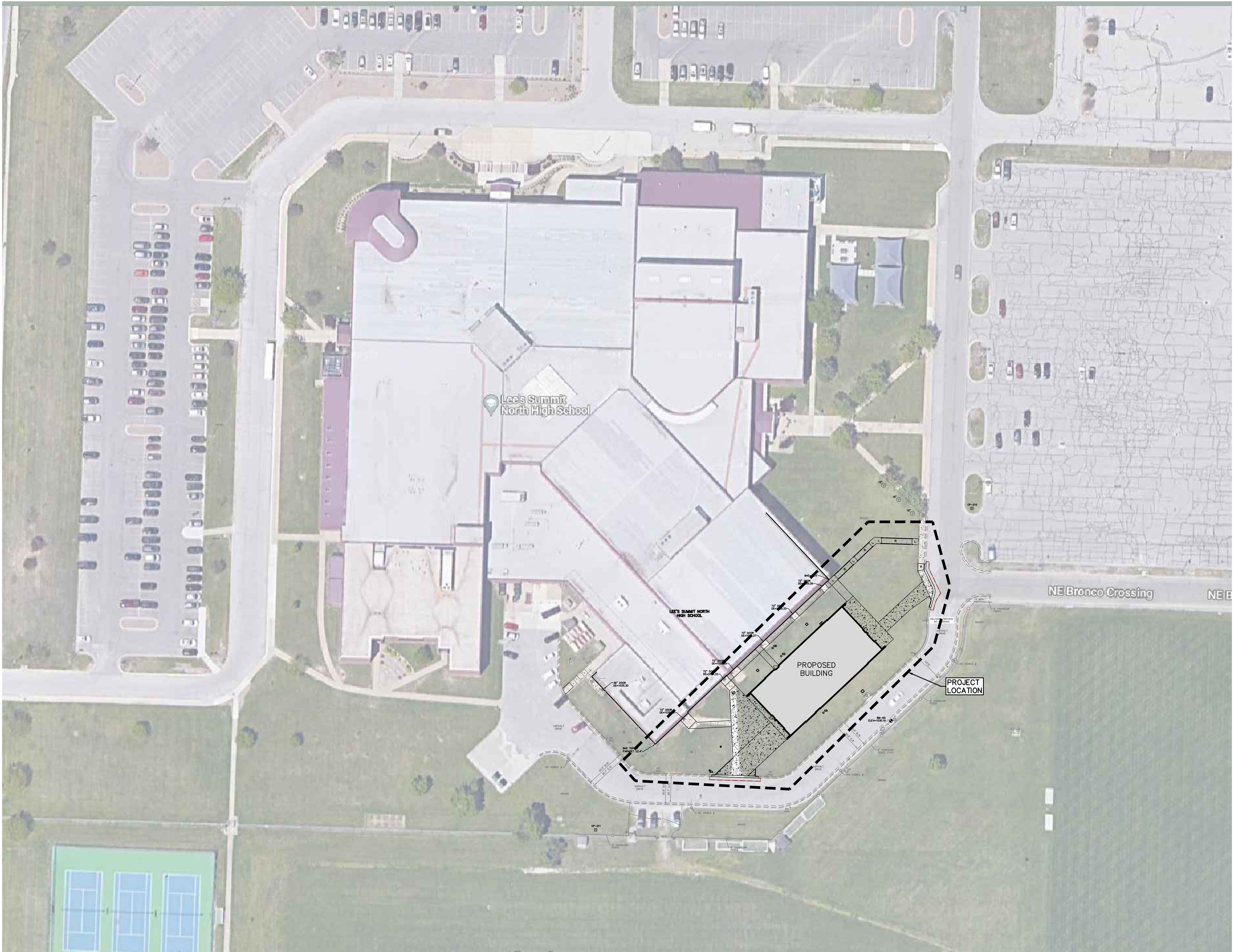
UNLESS A PROFESSIONAL SEAL WITH SIGNATURE AND DATE IS
AFFIXED, THIS DOCUMENT IS PRELIMINARY AND IS NOT INTENDED FOR
CONSTRUCTION, RECORDING PURPOSES OR IMPLEMENTATION



Kaw Valley Engineering, Inc.
Missouri Certificate of Authority: 000842
Christian Crowder Date: 11/22/2022
Engineer License No. PE-2015000538

LSN GENERAL
LAYOUT SHEET

C000-B

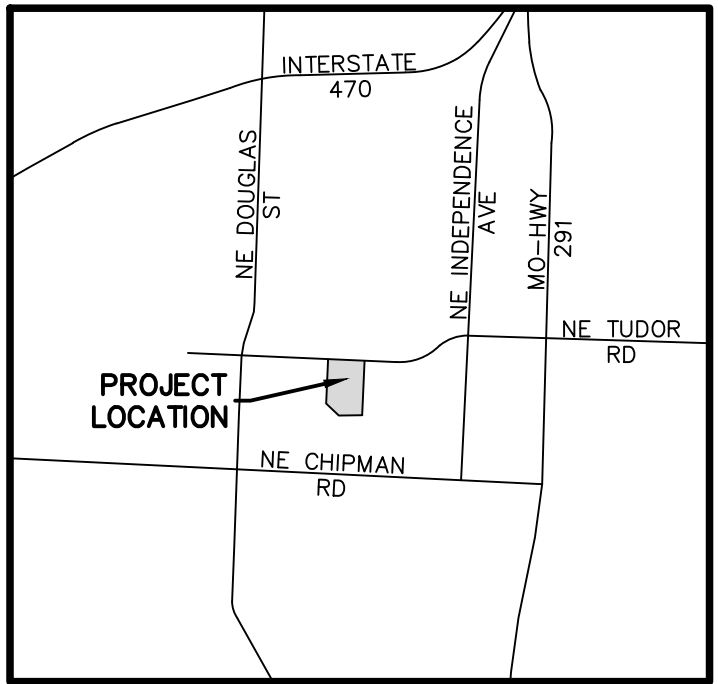


PROJ. NO. C21_1241 DSN: CJC ENGINEER
CPL: 1241GLS DWN: NJN MO # 2015000538
14700 WEST 114TH TERRACE
LENEXA, KANSAS 66215
PH. (913) 894-5150 | FAX (913) 894-5977
x@kveng.com | www.kveng.com

KV KAW VALLEY ENGINEERING

KAW VALLEY ENGINEERING, INC. IS AUTHORIZED TO OFFER
ENGINEERING SERVICES BY MISSOURI STATE CERTIFICATE OF
AUTHORITY # 000842. EXPIRES 12/31/23

LEE'S SUMMIT NORTH HIGH SCHOOL - ROBOTICS BUILDING
SITE PLAN
901 NE DOUGLAS ST, LEE'S SUMMIT, MO 64086
SECTION 31 - TOWNSHIP 48 N - RANGE 31 W



VICINITY MAP
SEC 31 - TWP 48N - RNG 31W
NOT TO SCALE

PREPARED FOR:
LEE'S SUMMIT R-7 SCHOOL DISTRICT
502 SE TRANSPANT DRIVE,
LEE'S SUMMIT, MO 64081
PHONE: (816) 986-2420
CONTACT: CHRIS CROWDER
EMAIL: kyle.gorrell@sr7.net

PREPARED BY:
KAW VALLEY ENGINEERING, INC.
14700 W 114TH TERR,
LENEXA, KANSAS 66215
PHONE: (913) 894-5150
CONTACT: CHRIS CROWDER
EMAIL: crowder@kveng.com

NOTE:
1. CONTRACTOR SHALL REFER TO ARCHITECTURAL PLANS FOR EXACT LOCATIONS AND DIMENSIONS OF ENTRANCE, SLOPED PAVING, EXIT PORCHES, RAMPS, PRECISE BUILDING DIMENSIONS AND EXACT BUILDING UTILITY ENTRANCE LOCATIONS.
2. THESE PLANS HAVE NOT BEEN VERIFIED WITH FINAL ARCHITECTURAL CONTRACT DRAWINGS. CONTRACTOR SHALL VERIFY AND NOTIFY THE ENGINEER OF ANY DISCREPANCIES. CONTRACTOR IS FULLY RESPONSIBLE FOR REVIEW AND COORDINATION OF ALL DRAWINGS AND CONTRACTOR DOCUMENTS.

CONSTRUCTION NOTES:
1. COORDINATE START-UP AND ALL CONSTRUCTION ACTIVITIES WITH THE LEE'S SUMMIT SCHOOL DISTRICT.
2. CONSTRUCTION METHODS AND MATERIALS NOT SPECIFIED IN THESE PLANS ARE TO MEET OR EXCEED THE CURRENT EDITION OF THE KANSAS CITY METROPOLITAN CHAPTER OF APWA SPECIFICATIONS AS ADOPTED AND AMENDED BY THE CITY OF LEE'S SUMMIT, MISSOURI AND MODIFIED AS NOTED ON THESE PLANS.
3. ALL CONSTRUCTION WORK AND UTILITY WORK OUTSIDE OF PROPERTY BOUNDARIES SHALL BE PERFORMED IN COOPERATION WITH AND IN ACCORDANCE WITH REGULATIONS OF THE AUTHORITIES CONCERNED.
4. PUBLIC CONVENIENCE AND SAFETY: THE CONTRACTOR SHALL CONDUCT THE WORK IN A MANNER THAT WILL INSURE, AS FAR AS PRACTICABLE, THE LEAST OBSTRUCTION TO TRAFFIC, AND SHALL PROVIDE FOR THE CONVENIENCE AND SAFETY OF THE GENERAL PUBLIC AND RESIDENTS ALONG AND ADJACENT TO PUBLIC ROADWAYS. CONTRACTOR IS RESPONSIBLE TO OBTAIN RIGHT-OF-WAY PERMIT FOR CONSTRUCTION OF DRIVE APPROACHES AND SIDEWALKS ALONG SE MILLER STREET AND SE MAIN STREET. CONTRACTOR SHALL PROVIDE TRAFFIC CONTROL AS REQUIRED BY THE CITY OF LEE'S SUMMIT PUBLIC WORKS DEPARTMENT. REFERENCE MUTCD STANDARD DRAWINGS.
5. ALL DIMENSIONS SHOWN ARE TO THE BACK OF CURB UNLESS OTHERWISE NOTED.
6. ALL SIDEWALK JOINTS WITHIN PROJECT AREA SHALL BE RECALCULATED WITH JOINT SEALANT. REFER TO TYPE 1 AND TYPE 2 JOINTS ON SHEET C190.

DETAILS - SEE SHEET C190-B FOR THE FOLLOWING DETAILS

- 001 STANDARD CONCRETE CURB & GUTTER
- 002 ZERO HEIGHT CURB
- 005 INTEGRAL CURB AND SIDEWALK
- 040 ASPHALT PAVEMENT
- 042 CONCRETE PAVEMENT
- 055 CONCRETE SIDEWALK
- 060 SIDEWALK RAMP

NOTES:

- 6 DISTURBED AREAS TO BE LANDSCAPED OR SODDED AS NOTED ON L SERIES SHEETS.
- 7 CONCRETE STOOP (REFER TO STRUCTURAL SHEETS)
- 13 CONCRETE MOW STRIP
- 60 BOLLARD (REFER TO ARCHITECTURAL SHEETS)
- 60 STORM SEWER STRUCTURE (SEE SHEET C600-B)
- 70 SANITARY SEWER STRUCTURE (SEE SHEET C700-B)
- 80 WATER STRUCTURE (SEE SHEET C800-B)
- 82 FIRE HYDRANT (SEE SHEET C800-B)

UTILITY STATEMENT:

THE UNDERGROUND UTILITIES SHOWN HEREON ARE FROM FIELD SURVEY INFORMATION OF ONE-CALL LOCATED UTILITIES, FIELD SURVEY INFORMATION OF ABOVE GROUND OBSERVABLE EVIDENCE, AND/OR THE SCALING AND PLOTTING OF EXISTING UTILITY MAPS AND DRAWINGS AVAILABLE TO THE SURVEYOR AT THE TIME OF SURVEY. THE SURVEYOR MAKES NO GUARANTEE THAT THE UNDERGROUND UTILITIES SHOWN COMPRISE ALL SUCH UTILITIES IN THE AREA, EITHER IN SERVICE OR ABANDONED. FURTHERMORE, THE SURVEYOR DOES NOT WARRANT THAT THE UNDERGROUND UTILITIES SHOWN ARE IN THE EXACT LOCATION INDICATED ALTHOUGH HE DOES CERTIFY THAT THEY ARE LOCATED AS ACCURATELY AS POSSIBLE FROM INFORMATION AVAILABLE. THE SURVEYOR HAS NOT PHYSICALLY LOCATED THE UNDERGROUND UTILITIES BY EXCAVATION UNLESS OTHERWISE NOTED ON THIS SURVEY. MISSOURI ONE CALL TICKET #220613016

WARRANTY / DISCLAIMER

THE DESIGNS REPRESENTED IN THESE PLANS ARE IN ACCORDANCE WITH ESTABLISHED PRACTICES OF CIVIL ENGINEERING FOR THE DESIGN FUNCTIONS AND USES INTENDED BY THE OWNER AT THIS TIME. HOWEVER, NEITHER KAW VALLEY ENGINEERING, INC. NOR ITS PERSONNEL CAN OR DO WARRANTY THESE DESIGNS OR PLANS AS CONSTRUCTED, EXCEPT IN THE SPECIFIC CASES WHERE KAW VALLEY ENGINEERING PERSONNEL INSPECT AND CONTROL THE PHYSICAL CONSTRUCTION ON A CONTEMPORARY BASIS AT THE SITE.

CAUTION - NOTICE TO CONTRACTOR

THE CONTRACTOR IS SPECIFICALLY CAUTIONED THAT THE LOCATION AND/OR ELEVATION OF EXISTING UTILITIES AS SHOWN ON THESE PLANS IS AS SHOWN ON THESE PLANS. THE VARIOUS UTILITY COMPANIES AND, WHERE POSSIBLE, MEASUREMENTS TAKEN IN THE FIELD. THE INFORMATION IS NOT TO BE RELIED ON AS BEING EXACT OR COMPLETE. THE CONTRACTOR MUST CALL THE APPROPRIATE UTILITY COMPANY AT LEAST 72 HOURS BEFORE ANY EXCAVATION TO REQUEST EXACT FIELD LOCATION OF UTILITIES. IT SHALL BE THE RESPONSIBILITY OF THE CONTRACTOR TO RELOCATE ALL EXISTING UTILITIES WHICH CONFLICT WITH PROPOSED IMPROVEMENTS SHOWN ON THE PLANS.
THE CONTRACTOR SHALL EXPOSE EXISTING UTILITIES AT LOCATIONS OF POSSIBLE CONFLICTS PRIOR TO ANY CONSTRUCTION.

SAFETY NOTICE TO CONTRACTOR

IN ACCORDANCE WITH GENERALLY ACCEPTED CONSTRUCTION PRACTICES, THE CONTRACTOR WILL BE SOLELY AND COMPLETELY RESPONSIBLE FOR CONDITIONS OF THE JOB SITE, INCLUDING SAFETY OF ALL PERSONS AND PROPERTY DURING PERFORMANCE OF THE WORK. THIS REQUIREMENT WILL APPLY CONTINUOUSLY AND NOT BE LIMITED TO NORMAL WORKING HOURS.



PROJ. NO. C21-1241 DSN: CJC
CWN: NJN ENGINEER
MO # 2015000538
14700 WEST 114TH TERRACE
LENEXA, KANSAS 66215
PH. (913) 894-5150 | FAX (913) 894-5977
x@kveng.com | www.kveng.com
KAW VALLEY ENGINEERING
KAW VALLEY ENGINEERING, INC. IS AUTHORIZED TO OFFER ENGINEERING SERVICES BY MISSOURI STATE CERTIFICATE OF AUTHORITY # 000842. EXPIRES 12/31/23

multistudio
the evolution of gould evans

**Lee's Summit Robotics,
Gic & Phys Educaiton**

LSN: 901 NE Douglas St., Lee's Summit MO 64086
LSW: 2600 SW Ward Rd, Lee's Summit MO 64082
LSHS: 400 SE Blue Pkwy, Lee's Summit MO 64063

Project Number: 0121-0100

owner: Lee's Summit R-7 School
301 NE Tudor Road
Lee's Summit, MO 64086
architect: Multistudio
4200 Pennsylvania
Kansas City, MO 64111
816.931.6655
multistudio

civil engineer: Kaw Valley Engineering
14700 West 114th Terrace
Lenexa, KS 66215
913.485.0318
kveng.com
structural engineer: Bob D. Campbell &
4338 Bellevue
Kansas City, MO 64111
816.531.4144
www.bdc-engrs.com

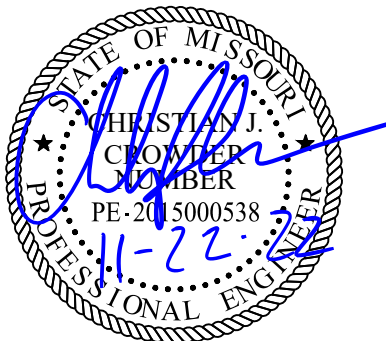
MEP/IT/Code: Henderson Engineers
8345 Lenexa Drive, Suite 300
Lenexa, KS 66214
816.742.5000
www.hendersonengineers.com

Issue Date: September 9, 2022

Revisions	DESCRIPTION	DATE
NUMBER	AS B1 - CODE COMMENTS	11/22/2022
1		

**RELEASED FOR
CONSTRUCTION**
As Noted on Plans Review
Development Services Department
Lee's Summit, Missouri
12/02/2022

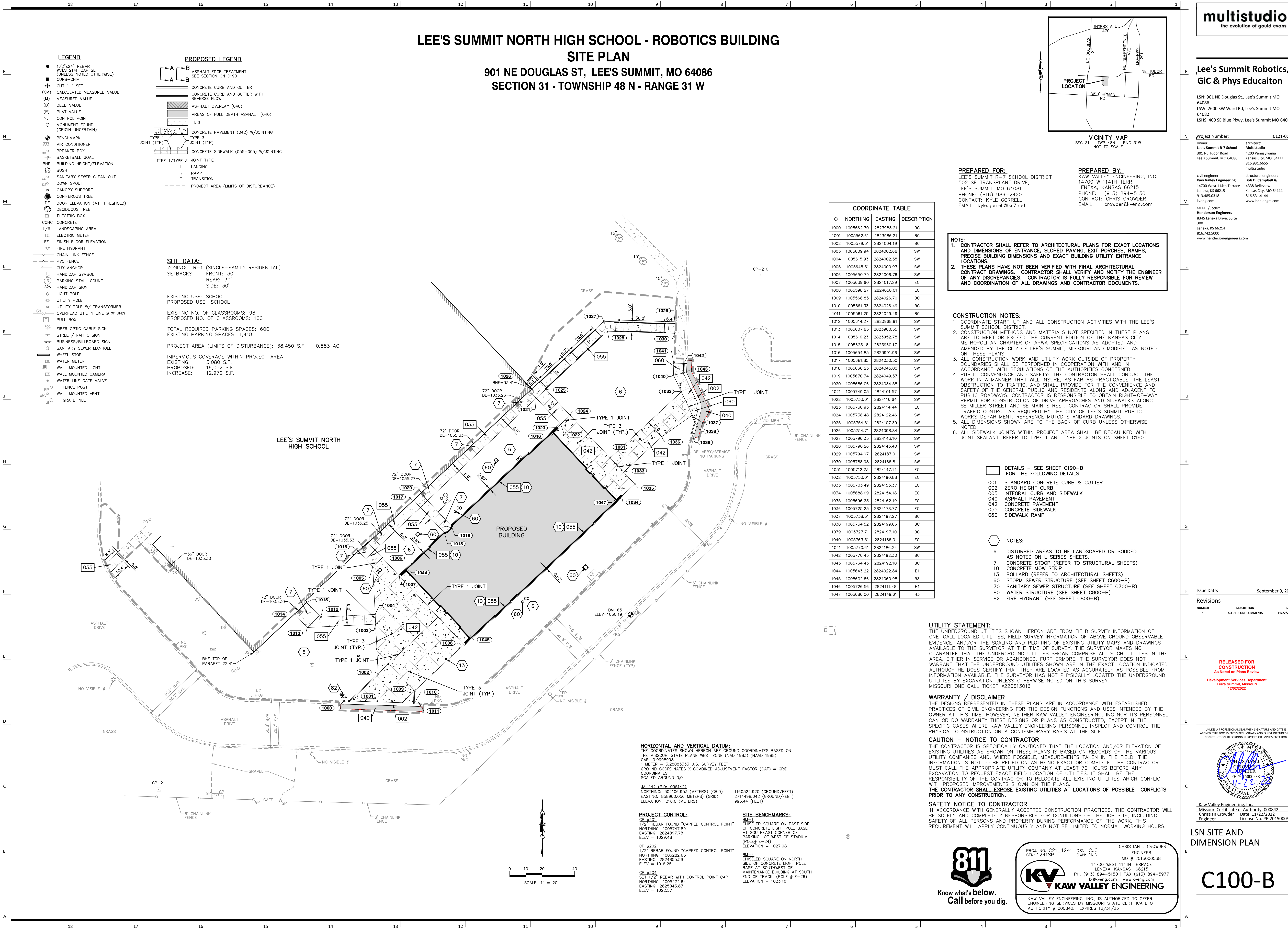
UNLESS A PROFESSIONAL SEAL WITH SIGNATURE AND DATE IS AFFIXED, THIS DOCUMENT IS PRELIMINARY AND IS NOT INTENDED FOR CONSTRUCTION, RECORDING PURPOSES OR IMPLEMENTATION



Kaw Valley Engineering, Inc.
Missouri Certificate of Authority: 000842
Christian Crowder Date: 11/22/2022
Engineer License No. PE-2015000538

**LSN SITE AND
DIMENSION PLAN**

C100-B



LEGEND:

—G—	UNDERGROUND GAS	HDPE	HIGH DENSITY POLYETHYLENE
—G(M)	GAS METER	—G(R)	GAS VALVE
—G(R)	GAS RISER	—G(R)	GAS LINE SIGN
—G(R)	GATE POST	DE	DOOR ELEVATION
—G(R)	CHAIN LINK FENCE	AT	AT THRESHOLD
—G(R)	STREET/TRAFFIC SIGN	FF	FINISH FLOOR ELEVATION
—G(R)	UNDERGROUND FIBER OPTIC CABLE	BHE	BUILDING HEIGHT/ELEVATION
—G(R)	UNDERGROUND FIBER OPTIC (FROM RECORDS)	B/B	BACK TO BACK OF CURB MEASUREMENT
—G(R)	TELEPHONE PEDESTAL	E/E	EDGE TO EDGE OF ASPHALT
—G(R)	SANITARY SEWER MANHOLE	W	WATER LINE
—G(R)	STORM SEWER MANHOLE	W(M)	WATER METER
—G(R)	AREA INLET	W(L)	WATER LINE GATE VALVE
—G(R)	CURB INLET	BUSH	BUSH
—G(R)	SANITARY SEWER CLEAN OUT	DS	DECIDUOUS TREE
—G(R)	DOWN SPOUT	T/E	TRASH ENCLOSURE
—G(R)	FLOOR DRAIN	L/S	LANDSCAPING AREA
—G(R)	FLARED END SECTION	CONC	CONCRETE
—G(R)	SANITARY SEWER LINE	FP	FLAG POLE
—G(R)	STORM SEWER LINE	EM	ELECTRIC METER
—G(R)	CORRUGATED METAL PIPE	UEP	UNDERGROUND ELECTRIC PEDESTAL
—G(R)	REINFORCED CONCRETE PIPE	L	LANDING
—G(R)	UNDERGROUND ELECTRIC	R	RAMP
—G(R)	OVERHEAD UTILITY LINE (# OF LINES)	—G(R)	UNDERGROUND GAS PER RECORD
—G(R)	PULL BOX	—S(R)	SANITARY SEWER LINE PER RECORD
—G(R)	LIGHT POLE	—D(R)	STORM SEWER LINE PER RECORD
—G(R)	UTILITY POLE		ASPHALT PAVING TO BE REMOVED
—G(R)	UTILITY POLE W/ LIGHT		CONCRETE PAVING/SIDEWALKS TO BE REMOVED
—G(R)	UTILITY POLE W/ TRANSFORMER		LIMITS OF DISTURBANCE
—G(R)	WATER LINE PER RECORD		
—G(R)	UNDERGROUND ELECTRIC PER RECORD		
—G(R)	CONIFEROUS TREE		

EROSION & PROPOSED IMPROVEMENTS LEGEND:

—1218	EXISTING GROUND CONTOUR (1' INTERVALS)
—1218	PROPOSED FINISHED GROUND CONTOUR (1' INTERVALS)
—	GRAVEL FILTER BAGS
—	SEDIMENTATION FENCE
—	CONSTRUCTION ENTRANCE
—	LIMITS OF DISTURBANCE
—(CW)	CONCRETE WASH AREA

DEMOLITION

- TO REMAIN.
- TREES TO REMAIN. EARTHWORK CONTRACTOR SHALL PROVIDE TREE PROTECTION FENCE AT DRIPLINE PRIOR TO EXCAVATION AND EMBANKMENT. A MINIMUM RADIUS OF 10' FROM TREE SHALL BE PROVIDED ANYWHERE WHERE PORTIONS OF DRIPLINE ARE NOT FENCED OFF. A LAYER OF MULCH (6" MINIMUM) SHALL BE PROVIDED TO PROTECT ROOT SYSTEM FROM DAMAGE. SELECTIVE HARVESTING OF MARKETABLE TREES MAY OCCUR WITH APPROVAL OF PLATTE COUNTY SCHOOL DISTRICT.
- SIGN TO BE RELOCATED
- SAW CUT LINE (FOR CONCRETE SAW CUT AT NEAREST CONTROL JOINT. FOR ASPHALT SAW CUT MINIMUM OF 6" FROM NEW CURB LINE). SEE C100-B AND C200-B SERIES SHEETS FOR LIMITS.
- CONTRACTOR TO REMOVE CONCRETE CURBS TO CONSTRUCT IMPROVEMENTS. SEE SHEET C100-B FOR LIMITS.
- CONTRACTOR TO REMOVE ASPHALT PAVING AS REQUIRED TO CONSTRUCT IMPROVEMENTS.
- CONTRACTOR TO REMOVE ASPHALT SURFACE, MINIMUM 2' OUTSIDE ASPHALT REMOVAL. REFER TO C100-B SERIES SHEETS SHEETS FOR LIMITS.
- CONTRACTOR TO REMOVE CONCRETE PAVING AND WALKS.
- CONTRACTOR TO MODIFY, REMOVE AND/OR REROUTE STORM SEWER PRIOR TO CONSTRUCTING ADDITIONS. REFER TO C600-B SHEETS FOR ADDITIONAL INFORMATION.
- CONTRACTOR TO REMOVE CLEANOUT.

NOTE:
1. CONTRACTOR SHALL REFER TO ARCHITECTURAL PLANS FOR EXACT LOCATIONS AND DIMENSIONS OF ENTRANCE, SLOPED PAVING, EXIT PORCHES, RAMPS, PRECISE BUILDING DIMENSIONS AND EXACT BUILDING UTILITY ENTRANCE LOCATIONS.
2. THESE PLANS HAVE NOT BEEN VERIFIED WITH FINAL ARCHITECTURAL CONTRACT DRAWINGS. CONTRACTOR IS FULLY RESPONSIBLE FOR REVIEW AND COORDINATION OF ALL DRAWINGS AND CONTRACTOR DOCUMENTS.

FOR THE FOLLOWING DETAILS REFER TO THE KC METROPOLITAN CHAPTER ADOPTED DIVISION III APWA STANDARD DRAWINGS FOR EROSION AND SEDIMENT CONTROL (2017 VERSION) ON SHEETS C290-B.

- ESC-01 CONSTRUCTION ENTRANCE AND CONCRETE WASHOUT
ESC-03 SEDIMENTATION FENCE
ESC-06 CURB INLET PROTECTION
ESC-07 AREA INLET PROTECTION

CONSTRUCTION NOTES:

- CONTRACTOR SHALL VERIFY SITE CONDITIONS PRIOR TO BIDDING. CONTRACTOR SHALL REMOVE ALL UTILITIES, PAVEMENT, CURBS AND ALL OTHER STRUCTURES AS NOTED EXCEPTING THOSE DESIGNATED "TO REMAIN" OR "TO BE REMOVED BY OTHERS" IN ACCORDANCE WITH THE SPECIFICATIONS AND THE CITY OF LEE'S SUMMIT AND STATE REGULATIONS. SITE CONDITIONS SHOWN WERE AS OF MARCH 7, 2022.
- ALL UTILITY PIPE LINES TO BE ABANDONED SHALL BE PLUGGED PER CITY AND STATE REGULATIONS.
- ALL PAVING, FLATWORK AND OTHER STRUCTURES DESIGNATED TO BE REMOVED SHALL BE REMOVED FROM PROPERTY AND DISPOSED OF IN CONFORMANCE WITH LOCAL, STATE AND FEDERAL REGULATIONS.
- ALL EXISTING UTILITIES ETC. LOCATED WITHIN THE BOUNDARIES OF THE PROPOSED BUILDING SHALL BE COMPLETELY REMOVED TO 10 FEET OUTSIDE OF BUILDING LINE.
- CONTRACTOR SHALL VERIFY THAT ALL UTILITIES TO EXISTING STRUCTURES HAVE BEEN DISCONNECTED PRIOR TO COMMENCING DEMOLITION.
- COORDINATE START-UP AND ALL CONSTRUCTION ACTIVITIES WITH THE ARCHITECT.
- CONSTRUCTION METHODS AND MATERIALS NOT SPECIFIED IN THESE PLANS ARE TO MEET OR EXCEED THE KANSAS CITY METROPOLITAN CHAPTER OF APWA STANDARD SPECIFICATIONS AS ADOPTED AND AMENDED BY THE CITY OF LEE'S SUMMIT.
- ALL CONSTRUCTION WORK AND UTILITY WORK SHALL BE PERFORMED IN COOPERATION WITH AND IN ACCORDANCE WITH REGULATIONS OF THE AUTHORITIES CONCERNED.

EROSION AND SEDIMENT CONTROL INSPECTION PROCEDURES

THE FOLLOWING PROCEDURES WILL BE USED TO MAINTAIN EROSION AND SEDIMENTATION CONTROLS.

- ALL CONTROL MEASURES WILL BE INSPECTED AT LEAST ONCE A WEEK AND AFTER EACH RAINFALL EVENT PRODUCING RUNOFF AND DAILY DURING PROLONGED RAINFALL PERIODS.
- ALL MEASURES WILL BE MAINTAINED IN GOOD WORKING ORDER. IF A REPAIR IS NECESSARY, IT WILL BE MADE WITHIN 24 HOURS OF THE INSPECTION.
- SEDIMENT WILL BE REMOVED FROM THE SILT BARRIERS WHEN IT HAS REACHED ONE-THIRD OF THE HEIGHT OF THE BARRIER.
- SILT BARRIERS WILL BE INSPECTED FOR DEPTH OF ACCUMULATED SEDIMENT, TEARS, ATTACHMENT TO POSTS, AND STABILITY ON A WEEKLY BASIS.
- TEMPORARY AND PERMANENT SEEDING AND PLANTING WILL BE INSPECTED FOR BARE SPOTS, WASHOUTS, AND HEALTHY GROWTH.
- THE CONSTRUCTION MANAGER WILL SELECT INDIVIDUALS TO BE RESPONSIBLE FOR INSPECTIONS, MAINTENANCE, REPAIRS, AND REPORTING. THE DESIGNATED INDIVIDUALS WILL RECEIVE THE NECESSARY TRAINING FROM THE CONSTRUCTION MANAGER TO PROPERLY INSPECT AND MAINTAIN THE CONTROLS IN GOOD WORKING ORDER.

GENERAL NOTES:

- PROJECT AREA IS APPROXIMATE LIMITS OF CONSTRUCTION.
- THE CONTRACTOR SHALL INSTALL EROSION CONTROL MEASURES AS SHOWN ON THE DRAWINGS PRIOR TO BEGINNING EARTHWORK OPERATIONS.
- THE CONTRACTOR SHALL MAINTAIN ALL SILT CONTROL MEASURES DURING CONSTRUCTION.
- ALL SILT SHALL REMAIN WITHIN THE CONSTRUCTION LIMITS. SURROUNDING PARKING LOTS AND PLAYGROUNDS SHALL BE KEPT CLEAR OF ALL MUD AND DEBRIS.
- A SEDIMENTATION BARRIER IS TO BE INSTALLED AS SHOWN.
- ACCUMULATED SEDIMENT SHALL BE REMOVED AND THE SEDIMENTATION BARRIERS MAINTAINED AS NEEDED TO PREVENT SEDIMENTATION BYPASS OF THE BARRIER.
- SLOPES ARE TO BE LEFT IN A ROUGH CONDITION DURING GRADING.
- CURB INLET SEDIMENTATION BARRIERS ARE TO BE INSTALLED AROUND INLETS WHERE SEDIMENTATION IS A CONCERN. INLET BARRIERS SHALL BE FILTER BAGS.
- SEDIMENT IS TO BE REMOVED FROM STORM WATER DRAINAGE SYSTEMS.
- CONTRACTOR IS RESPONSIBLE FOR INSTALLING ANY ADDITIONAL EROSION CONTROL AS HE/SHE DEEMS NECESSARY.
- TEMPORARY SEDIMENT FENCE/STRAW WATTLES TO REMAIN UNTIL ADEQUATE VEGETATION IS ESTABLISHED.
- MUD AND DEBRIS SHALL BE CLEANED UP AT THE CONCLUSION OF EACH WORKING DAY, OR AFTER EACH RAINFALL IF SILT IS PRESENT.
- INSPECTION, MAINTENANCE AND REPAIR OF EROSION CONTROL DEVICES SHALL BE ON GOING THROUGHOUT THE LIFE OF BUILDING CONSTRUCTION TO KEEP THE DEVICES IN OPERABLE CONDITION AT ALL TIMES. ADDITIONAL MEASURES SHALL BE INSTALLED AS REQUIRED BY ACTUAL FIELD CONDITIONS AND/OR GOVERNING INSPECTION AGENCIES.
- INSTALL CONSTRUCTION ENTRANCE AS NOTED.
- AT COMPLETION OF SITE GRADING AND OTHER RELATED CONSTRUCTION ACTIVITIES, ALL DISTURBED AREAS WITHIN THE PROJECT SITE SHALL BE SEED, SOODED, OR LANDSCAPED AS SHOWN ON THE SITE. IF GRADING ACTIVITIES CEASE ON AN AREA OF THE SITE DISTURBED SLOPES SHALL BE TEMPORARILY SEED IN ACCORDANCE WITH PLANS.
- TOPSOIL IS TO BE PLACED IN AREAS UNSUITABLE FOR VEGETATIVE GROWTH.
- STRIP TOPSOIL PRIOR TO EXCAVATION, STOCKPILE AND SPREAD ONTO DISKED SUBGRADE (4" MIN) A THICKNESS OF 4 INCHES.
- THE CONTRACTOR SHALL HAVE THE RESPONSIBILITY FOR RESOLVING COMPLAINTS IN THE EVENT THAT COMPLAINTS OR DAMAGES ARE FILED DUE TO DAMAGES OCCURRING ADJACENT TO OR DOWNSTREAM FROM PROPERTY BY SEDIMENT RESULTING FROM EROSION ON THE PROJECT SITE.
- GOOD HOUSEKEEPING PRACTICES SHALL BE MAINTAINED ON SITE TO KEEP SOLID WASTE FROM ENTRY INTO WATERS.
- ALL FUELING FACILITIES PRESENT ON SITE SHALL ADHERE TO APPLICABLE FEDERAL AND STATE REQUIREMENTS CONCERNING UNDERGROUND STORAGE, ABOVE GROUND STORAGE AND DISPENSERS, INCLUDING SPILL PREVENTION, CONTROL AND COUNTER MEASURES.
- EROSION CONTROL IS TO BE PLACED IN PHASING AS CONSTRUCTION PROGRESSES.
- MINIMAL WASHING OF CONCRETE EQUIPMENT ALLOWED, CHUTE ETC. CONCRETE WASHOUT OF THE DRUM IS NOT ALLOWED. ANY PIT/WASHOUT AREA NEEDS TO BE MAINTAINED IN A NON-DISCHARGING MANNER AND ANY WASTE RESIDUE WILL NEED TO BE CLEANED OUT AND REMOVED AT THE END OF PROJECT.
- EROSION CONTROL SEDIMENT FENCE OR STRAW WATTLE SHALL BE INSTALLED 1'-0" BEHIND CURB & GUTTER OR SIDEWALK UPON COMPLETION OF BACKFILL OF CURB IN ALL AREAS WHERE SLOPES FROM DISTURBED AREAS DRAIN TOWARDS CURB OR SIDEWALK. UPON COMPLETION OF FINAL GRADING THE TOES OF ALL EMBANKMENTS IN EXCESS OF TWO FEET IN HEIGHT WILL HAVE EROSION CONTROL SEDIMENT FENCE INSTALLED

WARRANTY / DISCLAIMER

THE DESIGNS REPRESENTED IN THESE PLANS ARE IN ACCORDANCE WITH ESTABLISHED PRACTICES OF CIVIL ENGINEERING FOR THE DESIGN FUNCTIONS AND USES INTENDED BY THE OWNER AT THIS TIME. HOWEVER, NEITHER KAW VALLEY ENGINEERING, INC NOR ITS PERSONNEL CAN OR DO WARRANTY THESE DESIGNS OR PLANS AS CONSTRUCTED, EXCEPT IN THE SPECIFIC CASES WHERE KAW VALLEY ENGINEERING PERSONNEL INSPECT AND CONTROL THE PHYSICAL CONSTRUCTION ON A TEMPORARY BASIS AT THE SITE.

CAUTION - NOTICE TO CONTRACTOR

THE CONTRACTOR IS SPECIFICALLY CAUTIONED THAT THE LOCATION AND/OR ELEVATION OF EXISTING UTILITIES AS SHOWN ON THESE PLANS IS BASED ON RECORDS OF THE VARIOUS UTILITY COMPANIES AND, WHERE POSSIBLE, MEASUREMENTS TAKEN IN THE FIELD. THE INFORMATION IS NOT TO BE RELIED ON AS BEING EXACT OR COMPLETE. THE CONTRACTOR MUST CALL THE APPROPRIATE UTILITY COMPANY AT LEAST 72 HOURS BEFORE ANY EXCAVATION TO REQUEST EXACT FIELD LOCATION OF UTILITIES. IT SHALL BE THE RESPONSIBILITY OF THE CONTRACTOR TO RELOCATE ALL EXISTING UTILITIES WHICH CONFLICT WITH PROPOSED IMPROVEMENTS SHOWN ON THE PLANS.
THE CONTRACTOR SHALL EXPOSE EXISTING UTILITIES AT LOCATIONS OF POSSIBLE CONFLICTS PRIOR TO ANY CONSTRUCTION.

SAFETY NOTICE TO CONTRACTOR

IN ACCORDANCE WITH GENERALLY ACCEPTED CONSTRUCTION PRACTICES, THE CONTRACTOR WILL BE SOLELY AND COMPLETELY RESPONSIBLE FOR CONDITIONS OF THE JOB SITE, INCLUDING SAFETY OF ALL PERSONS AND PROPERTY DURING PERFORMANCE OF THE WORK. THIS REQUIREMENT WILL APPLY CONTINUOUSLY AND NOT BE LIMITED TO NORMAL WORKING HOURS.

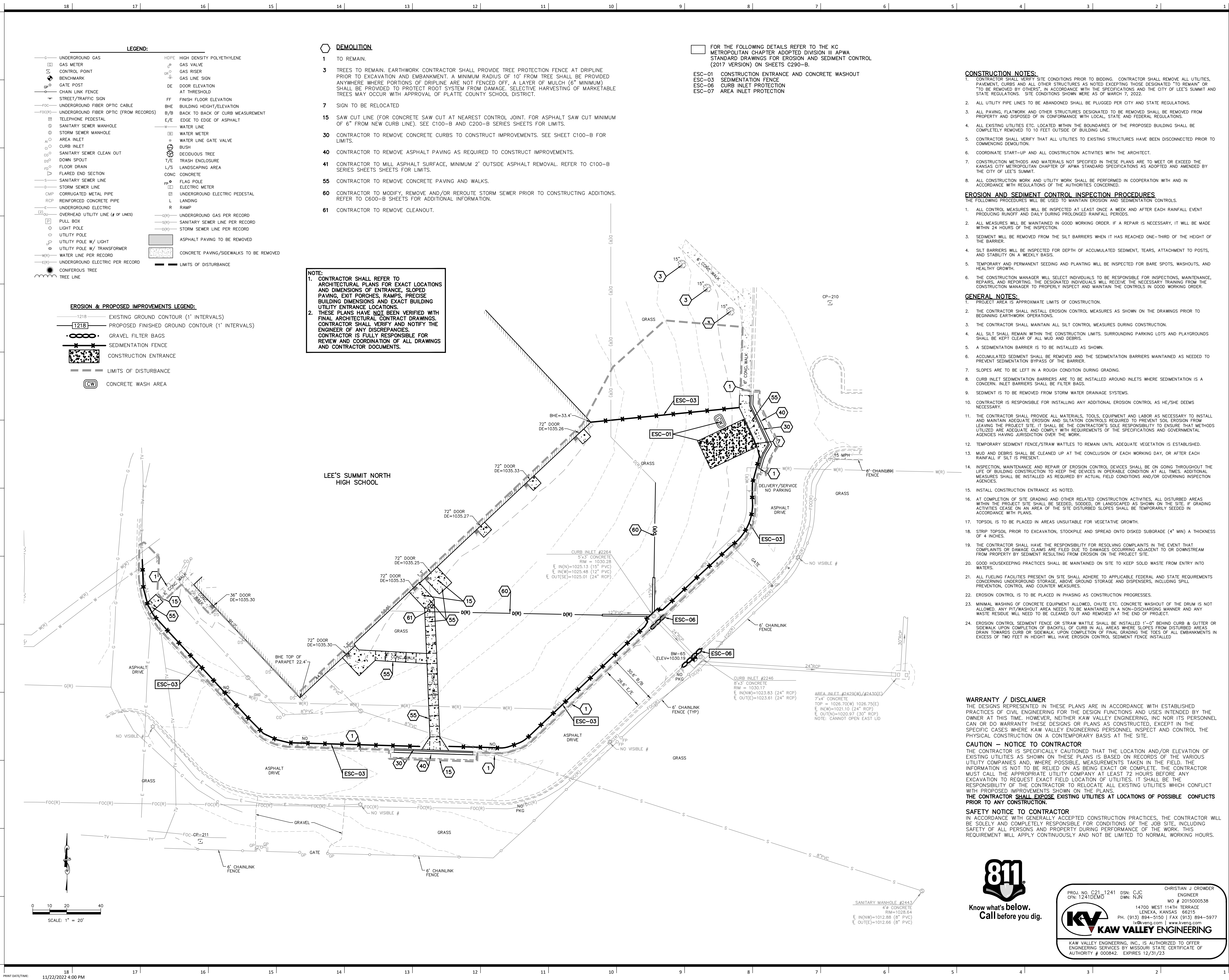


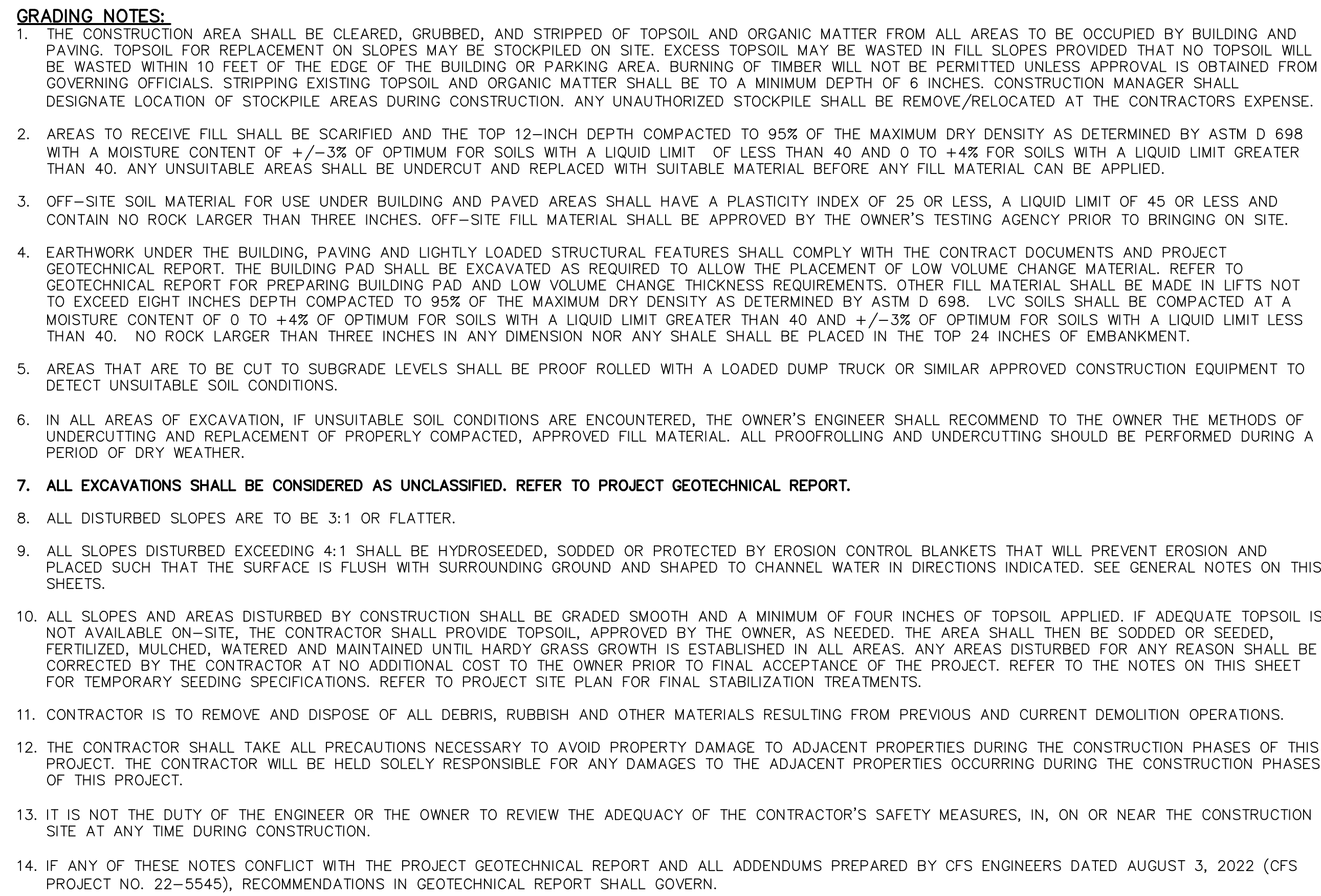
Know what's below.
Call before you dig.

PROJ. NO. C21-1241 DSN: CJC CHRISTIAN J. CROWDER
CIN: 1241DEM DWN: NJN ENGINEER
MO # 2015000538
14700 WEST 114TH TERRACE
LENEXA, KANSAS 66215
PH. (913) 894-5150 | FAX (913) 894-5977
www.kveg.com | www.kveg.com

KAW VALLEY ENGINEERING

KAW VALLEY ENGINEERING, INC. IS AUTHORIZED TO OFFER
ENGINEERING SERVICES BY MISSOURI STATE CERTIFICATE OF
AUTHORITY # 000842. EXPIRES 12/31/23





PROJ. NO. C21_1241
CFN: 1241GP

DSN: CJC
DWN: NJN

CHRISTIAN J CROWDER
ENGINEER

MO # 201500538

14007 WEST 114TH
TERACE
LENEXA, KANSAS 66215

PH. (913) 894-5150 | FAX (913) 894-5977
lx@kvang.com | www.kvang.com

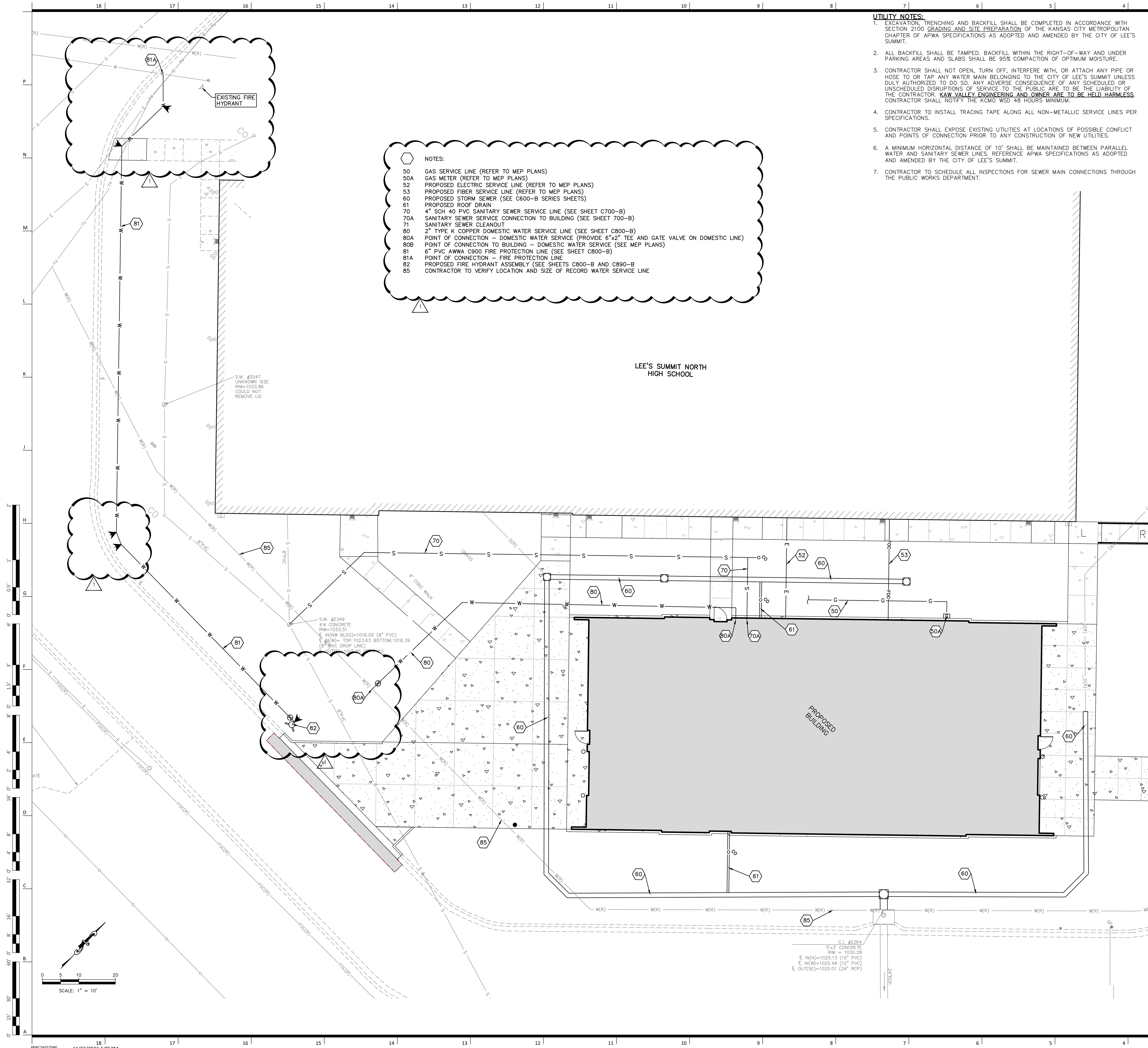
KAW VALLEY ENGINEERING

KAW VALLEY ENGINEERING, INC. IS AUTHORIZED TO OFFER
ENGINEERING SERVICES BY MISSOURI STATE CERTIFICATE OF
AUTHORITY # 000842. EXPIRES 12/31/23

UNLESS A PROFESSIONAL SEAL WITH SIGNATURE AND DATE IS
 KEED, THIS DOCUMENT IS PRELIMINARY AND IS NOT INTENDED TO
 CONSTRUCTION, RECORDING PURPOSES OR IMPLEMENTATION

Valley Engineering, Inc.
 Missouri Certificate of Authority: 000842
 Christian Crowder Date: 11/22/2022
 Engineer License No. PE-2015000538

LSN GRADING PLAN



Lee's Summit Robotics,
Gic & Phys Educaiton

LSN: 901 NE Douglas St., Lee's Summit MO
64086
LSW: 2600 SW Ward Rd, Lee's Summit MO
64082
LSHS: 400 SE Blue Pkwy, Lee's Summit MO 64063

Project Number: 0121-0100

owner: Lee's Summit R-7 School
301 NE Tudor Road
Lee's Summit, MO 64086

architect: Multistudio
4200 Pennsylvania
Kansas City, MO 64111

816.931.6655
multistudio

civil engineer: Kaw Valley Engineering
14700 West 114th Terrace
Lenexa, KS 66215

structural engineer: Bob D. Campbell &
4338 Bellevue
Kansas City, MO 64111

816.531.4144
www.bdc-engrs.com

MEP/IT/Code: Henderson Engineers
8345 Lenexa Drive, Suite
300
Lenexa, KS 66214

816.742.5000
www.hendersonengineers.com

Issue Date: September 9, 2022

NUMBER	DESCRIPTION	DATE
1	ASD 01 - CODE COMMENTS	11/22/2022

RELEASED FOR
CONSTRUCTION
As Noted on Plans Review
Development Services Department
Lee's Summit, Missouri
12/02/2022

UNLESS A PROFESSIONAL SEAL WITH SIGNATURE AND DATE IS
AFFIXED, THIS DOCUMENT IS PRELIMINARY AND IS NOT INTENDED FOR
CONSTRUCTION, RECORDING PURPOSES OR IMPLEMENTATION



Kaw Valley Engineering, Inc.
Missouri Certificate of Authority: 000842
Christian Crowder Date: 11/22/2022
Engineer License No. PE-2015000538

LSN UTILITY PLAN

C500-B

Lee's Summit Robotics,
Gic & Phys Educaiton

LSN: 901 NE Douglas St., Lee's Summit MO
64086
LSW: 2600 SW Ward Rd, Lee's Summit MO
64082
LSHS: 400 SE Blue Pkwy, Lee's Summit MO 64063

Project Number: 0121-0100

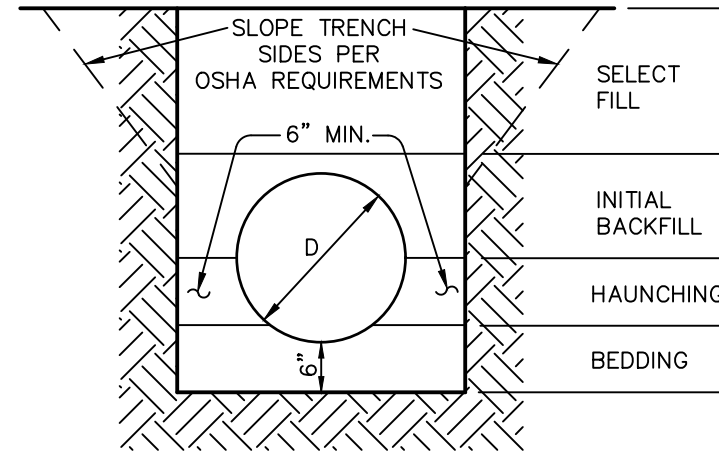
owner:
Lee's Summit R-7 School
301 NE Tudor Road
Lee's Summit, MO 64086

architect:
Multistudio
4200 Pennsylvania
Kansas City, MO 64111
816.931.6655
multistudio

civil engineer:
Kaw Valley Engineering
14700 West 114th Terrace
Lenexa, KS 66215
913.485.0318
kveng.com

structural engineer:
Bob D. Campbell &
4338 Bellevue
Kansas City, MO 64111
816.531.4144
www.bdc-engrs.com

MEP/IT/Code:
Henderson Engineers
8345 Lenexa Drive, Suite
300
Lenexa, KS 66214
816.742.5000
www.hendersonengineers.com

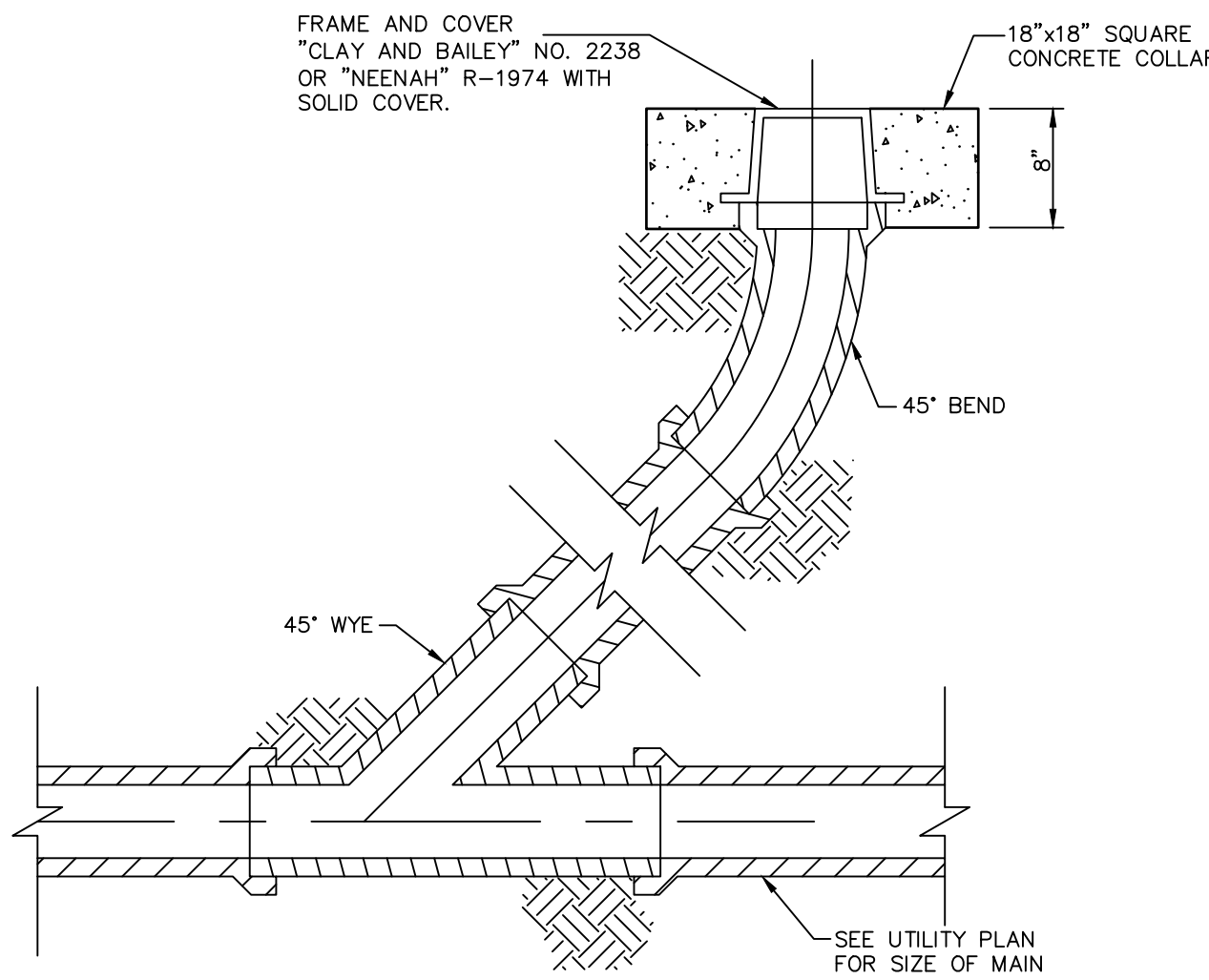


FLEXIBLE PIPE: INCLUDES
CORRUGATED POLYETHYLENE PIPE AND/OR POLYVINYL
CHLORIDE PIPE.

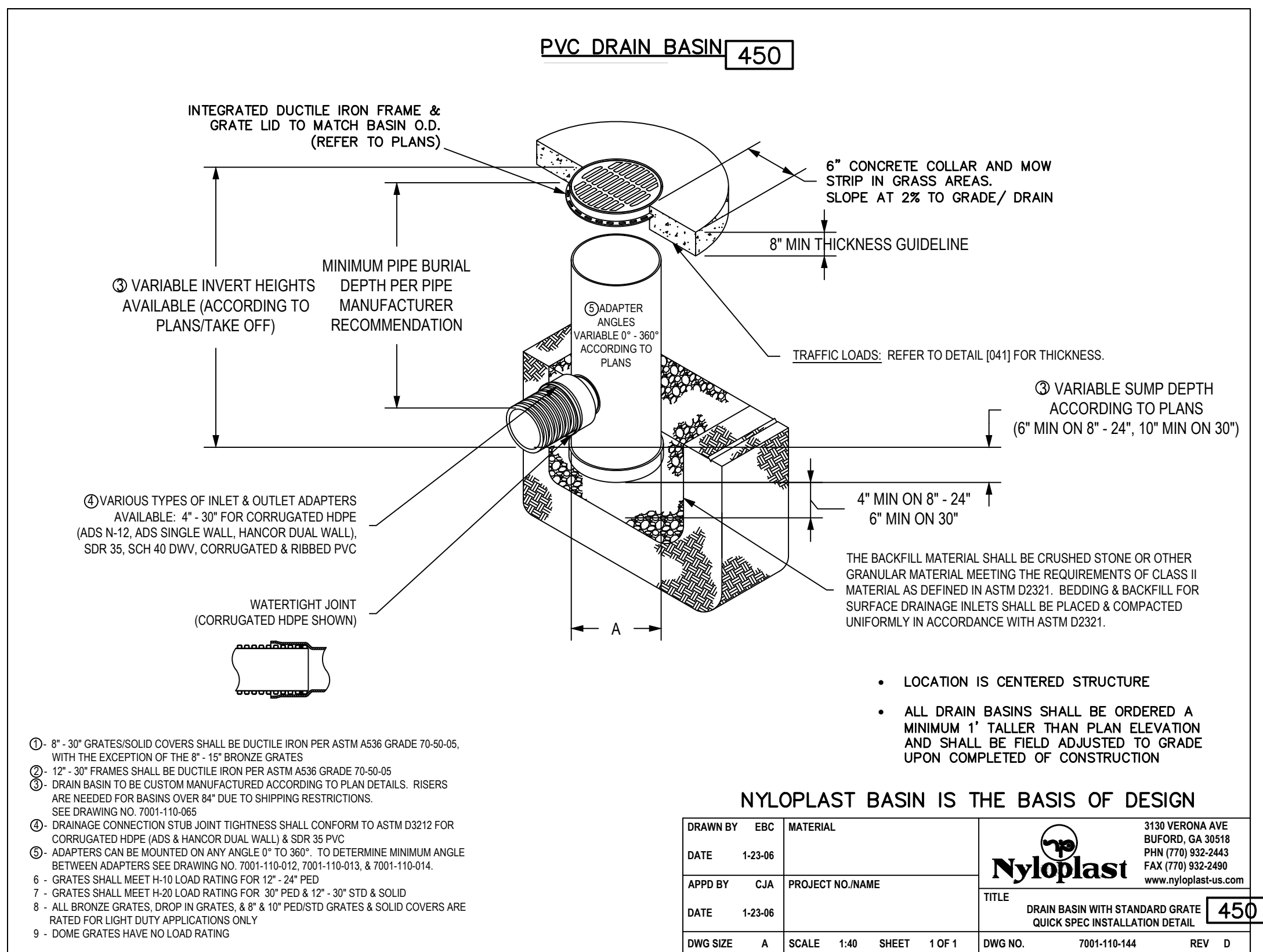
RIGID PIPE: INCLUDES REINFORCED
CONCRETE, DUCTILE IRON, & CAST IRON

- BEDDING SHALL BE COMPACTED CRUSHED STONE AND SHALL BE
SHAPE TO THE BOTTOM OF THE PIPE.
- HAUNCHING AND INITIAL BACKFILL MATERIAL SHALL BE CLASS I
OR II (REF. ASTM D2321) GRANULAR MATERIAL AND SHALL BE
COMPACTED TO 93% STANDARD PROCTOR.

TRENCH AND BEDDING DETAILS
REFER TO KANSAS CITY METROPOLITAN CHAPTER
OF APWA SPECIFICATIONS SECTION 2102.4

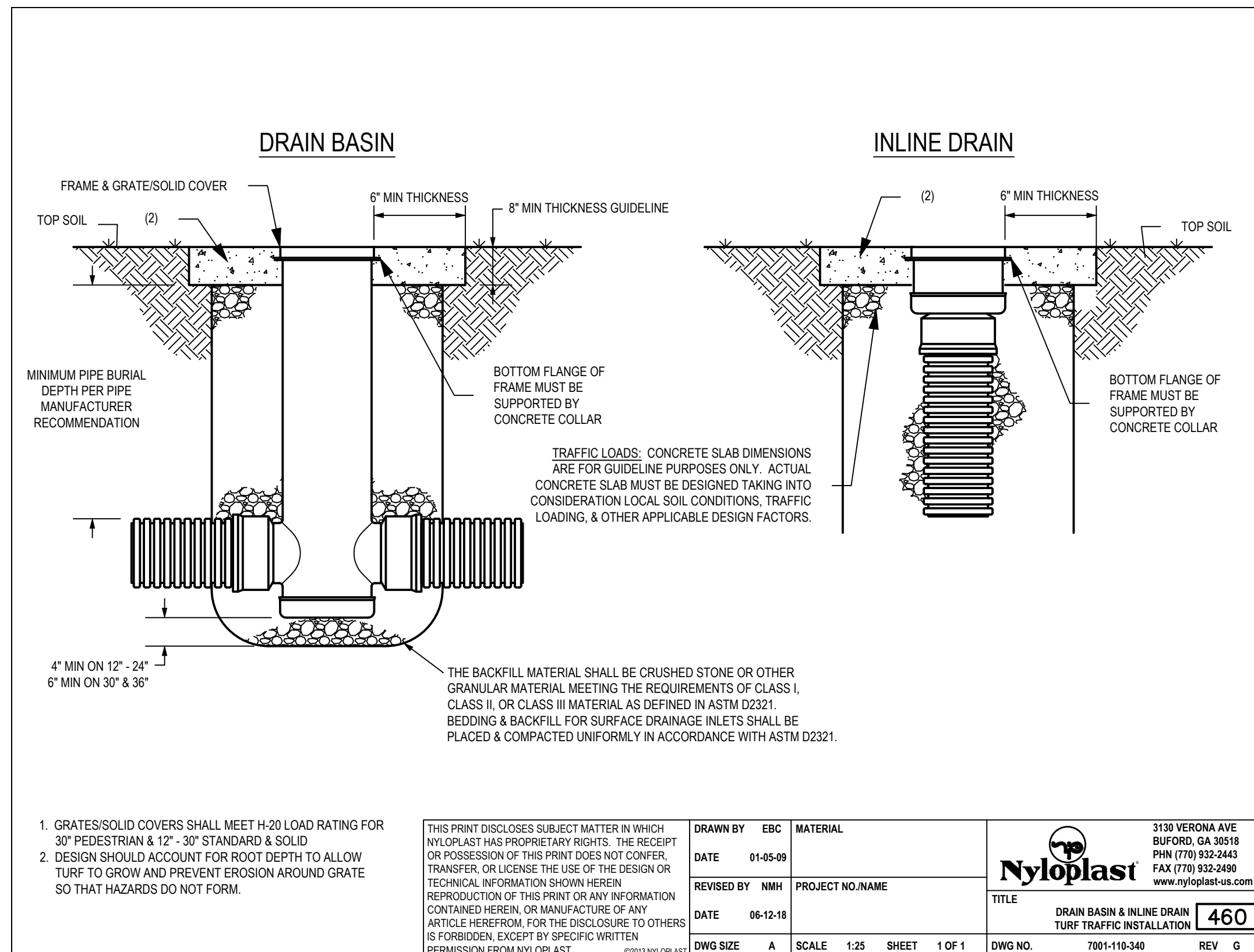


CLEAN-OUT 510



NYLOPLAST BASIN IS THE BASIS OF DESIGN

DRAWN BY	ERC	MATERIAL	3130 VERONA AVE BUFORD, GA 30518 PHN (770) 932-2443 FAX (770) 932-2490 www.nyloplast-us.com
DATE	1-23-06		
APPRO BY	CJA	PROJECT NO./NAME	TITLE
DATE	1-23-06		DRAIN BASIN WITH STANDARD GRATE QUICK SPEC INSTALLATION DETAIL
DWG SIZE	A	SCALE 1:40	SHEET 1 OF 1
DWG NO.	7001-110-144	REV	D

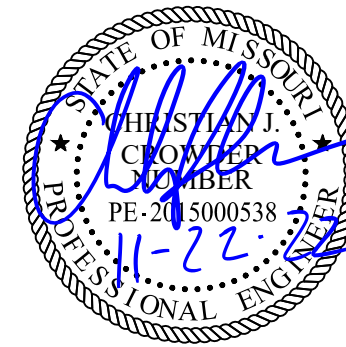


Issue Date: September 9, 2022

NUMBER	DESCRIPTION	DATE
1	AS BUILT - CODE COMMENTS	11/22/2022

RELEASED FOR
CONSTRUCTION
As Noted on Plans Review
Development Services Department
Lee's Summit, Missouri
12/02/2022

UNLESS A PROFESSIONAL SEAL WITH SIGNATURE AND DATE IS
AFFIXED, THIS DOCUMENT IS PRELIMINARY AND IS NOT INTENDED FOR
CONSTRUCTION, RECORDING PURPOSES OR IMPLEMENTATION



Kaw Valley Engineering, Inc.
Missouri Certificate of Authority: 000842
Christian Crowder Date: 11/22/2022
Engineer License No. PE-2015000538

LSN DETAIL SHEET

PROJ. NO. C21-1241 DSN: CJC CHRISTIAN J. CROWDER
CPL: 1241DET DWN: NJN ENGINEER
MO # 2015000538
14700 WEST 114TH TERRACE
LENEXA, KANSAS 66215
PH. (913) 894-5150 | FAX (913) 894-5977
x@kveng.com | www.kveng.com

KV KAW VALLEY ENGINEERING

KAW VALLEY ENGINEERING, INC. IS AUTHORIZED TO OFFER
ENGINEERING SERVICES BY MISSOURI STATE CERTIFICATE OF
AUTHORITY # 000842. EXPIRES 12/31/23

C690-B

Lee's Summit Robotics,
Gic & Phys Educaiton

LSN: 901 NE Douglas St., Lee's Summit MO
64086
LSW: 2600 SW Ward Rd, Lee's Summit MO
64082
LSHS: 400 SE Blue Pkwy, Lee's Summit MO 64063

Project Number: 0121-0100

owner:
Lee's Summit R-7 School
301 NE Tudor Road
Lee's Summit, MO 64086

architect:
Multistudio
4200 Pennsylvania
Kansas City, MO 64111
816.931.6655
multistudio

civil engineer:
Kaw Valley Engineering
14700 West 114th Terrace
Lenexa, KS 66215
913.485.0318
kveng.com

structural engineer:
Bob D. Campbell &
4338 Bellevue
Kansas City, MO 64111
816.531.4144
www.bdc-engrs.com

MEP/IT/Code:
Henderson Engineers
8345 Lenexa Drive, Suite
300
Lenexa, KS 66214
816.742.5000
www.hendersonengineers.com

Issue Date: September 9, 2022

NUMBER	DESCRIPTION	DATE
1	AS1 01 - CODE COMMENTS	11/22/2022

RELEASER FOR
CONSTRUCTION
As Noted on Plans Review
Development Services Department
Lee's Summit, Missouri
12/02/2022

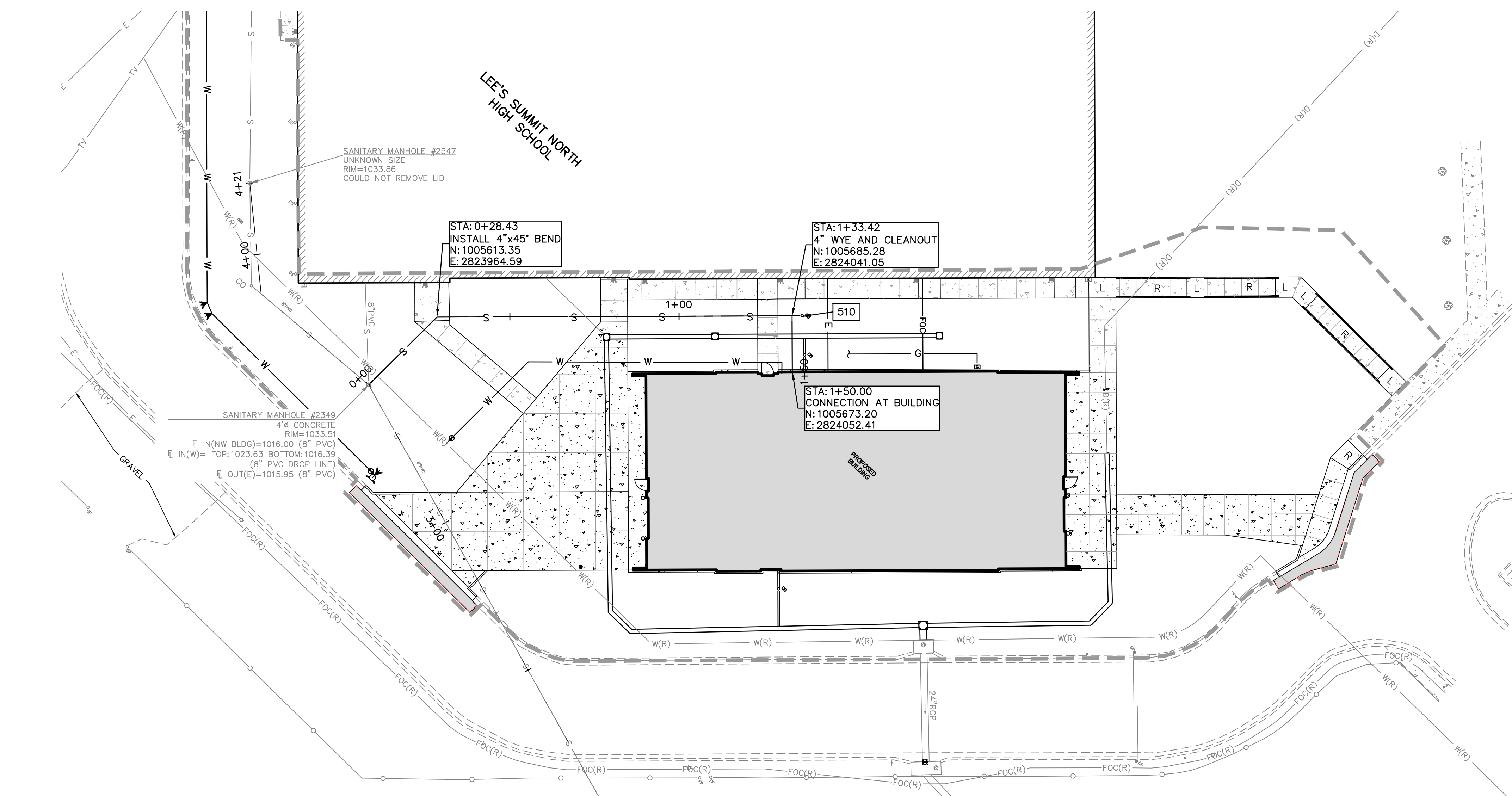
UNLESS A PROFESSIONAL SEAL WITH SIGNATURE AND DATE IS
AFFIXED, THIS DOCUMENT IS PRELIMINARY AND IS NOT INTENDED FOR
CONSTRUCTION, RECORDING PURPOSES OR IMPLEMENTATION



Kaw Valley Engineering, Inc.
Missouri Certificate of Authority: 000842
Christian Crowder Date: 11/22/2022
Engineer License No. PE-2015000538

LSN SANITARY PLAN
AND PROFILE

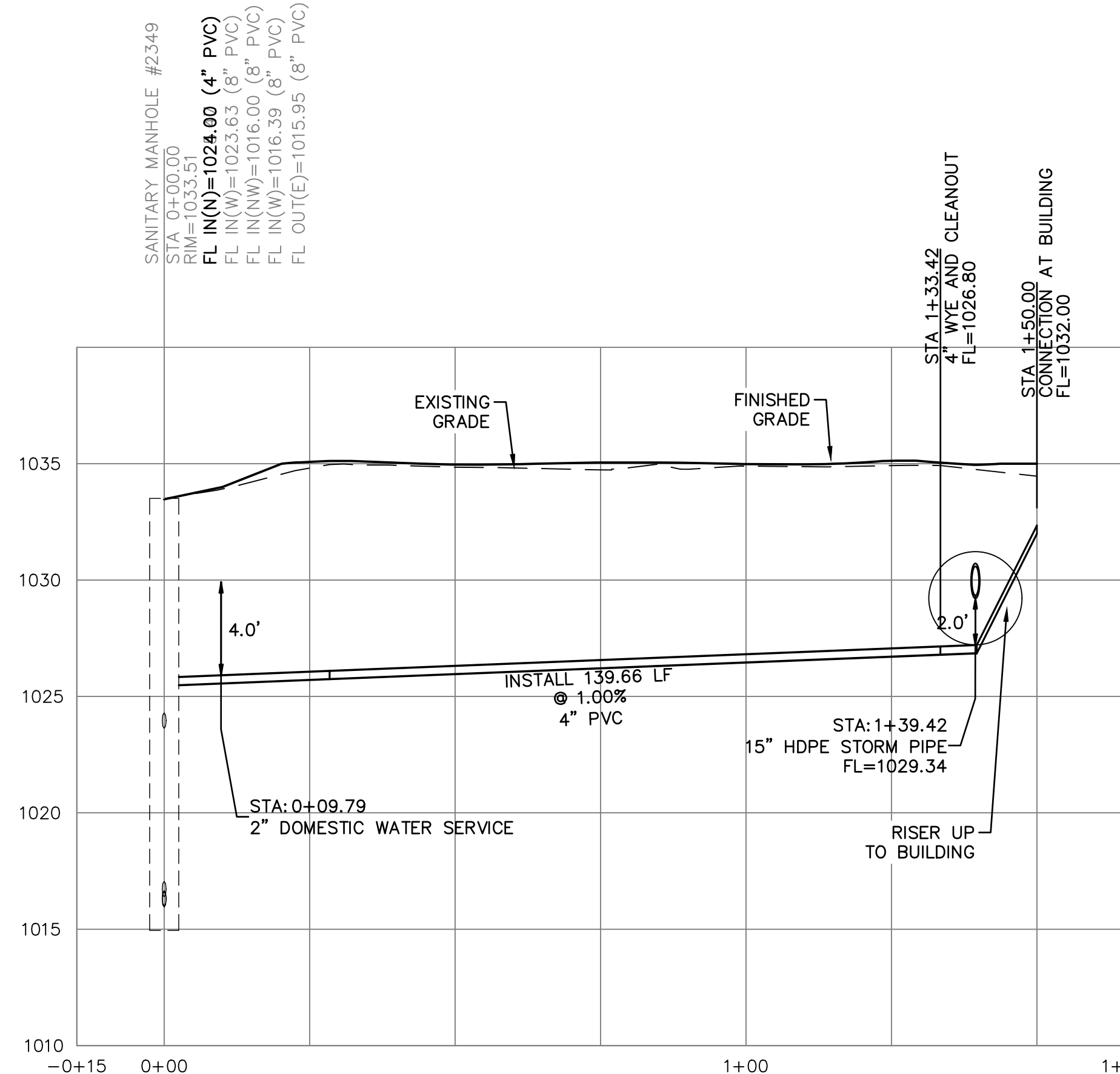
C700-B



PROPOSED SANITARY SEWER LINE PLAN

DETAILS - SEE SHEET C790-B
FOR THE FOLLOWING DETAILS

510 CLEANOUT
SAN-1 BUILDING SEWER STUB AND RISER



PROPOSED SANITARY SEWER LINE PROFILE

SANITARY SEWER MATERIALS AND CONSTRUCTION NOTES:

- ALL WORK RELATED TO SANITARY SEWER SHALL BE COMPLETED IN ACCORDANCE WITH SECTION 3500 SANITARY SEWERS OF THE CITY OF LEE'S SUMMIT, MISSOURI STANDARD SPECIFICATIONS.
- ALL PIPE USED FOR SANITARY SEWER SHALL BE PVC (SDR 26) OR DIP (CL 50) AS NOTED ON PLANS. MATERIAL SHALL CONFORM TO SECTION 3501 C & D OF THE CITY OF LEE'S SUMMIT, MISSOURI STANDARD SPECIFICATIONS.
- MANHOLES SHALL CONFORM TO SECTION 3501 P OF THE CITY OF LEE'S SUMMIT, MISSOURI STANDARD SPECIFICATIONS.
- ALL EXISTING UTILITIES INDICATED ON THE DRAWINGS ARE ACCORDING TO THE BEST INFORMATION AVAILABLE TO THE ENGINEER; HOWEVER, ALL UTILITIES ACTUALLY EXISTING MAY NOT BE SHOWN. UTILITIES DAMAGED THROUGH THE NEGLIGENCE OF THE CONTRACTOR TO OBTAIN THE LOCATION OF SAME SHALL BE REPAIRED OR REPLACED BY THE CONTRACTOR AT HIS EXPENSE.
- ALL INSTALLATION SHALL BE COMPLETED IN ACCORDANCE WITH SECTION 3502 OF THE CITY OF LEE'S SUMMIT, MISSOURI STANDARD SPECIFICATIONS. REFER TO SECTION 3502.C FOR TESTING AND ACCEPTANCE REQUIREMENTS.
- EXCAVATION, TRENCHING AND BACKFILL SHALL BE COMPLETED IN ACCORDANCE WITH SECTION 2100 GRADING AND SITE PREPARATION OF THE KANSAS CITY METROPOLITAN CHAPTER OF APWA SPECIFICATIONS AS ADOPTED AND AMENDED BY THE CITY OF LEE'S SUMMIT. ALL EXCAVATIONS SHALL BE CONSIDERED UNCLASSIFIED. REFER TO PROJECT GEOTECHNICAL REPORT.
- ALL BACKFILL SHALL BE TAMPED. BACKFILL WITHIN THE RIGHT-OF-WAY AND UNDER PARKING AREAS AND SLABS SHALL BE 95% COMPACTION OF OPTIMUM MOISTURE.
- ALL STUB LINES SHALL BE LAID ON 1.00% GRADE FOR 6" PIPE AND 2.00% GRADE FOR 4" PIPE, UNLESS NOTED OTHERWISE.
- RELOCATION OF ANY WATER LINE, SEWER LINE OR SERVICE LINE THEREOF REQUIRED FOR THE CONSTRUCTION OF THIS PROJECT SHALL BE THE RESPONSIBILITY OF THE CONTRACTOR AND SHALL BE AT HIS EXPENSE. REFER TO PLANS FOR ADDITIONAL INFORMATION.
- REFER TO SHEET C790-B FOR SANITARY SEWER DETAILS.

SAFETY NOTICE TO CONTRACTOR

IN ACCORDANCE WITH GENERALLY ACCEPTED CONSTRUCTION PRACTICES, THE CONTRACTOR WILL BE SOLELY AND COMPLETELY RESPONSIBLE FOR CONDITIONS OF THE JOB SITE, INCLUDING SAFETY OF ALL PERSONS AND PROPERTY DURING PERFORMANCE OF THE WORK. THIS REQUIREMENT WILL APPLY CONTINUOUSLY AND NOT BE LIMITED TO NORMAL WORKING HOURS.

WARRANTY / DISCLAIMER

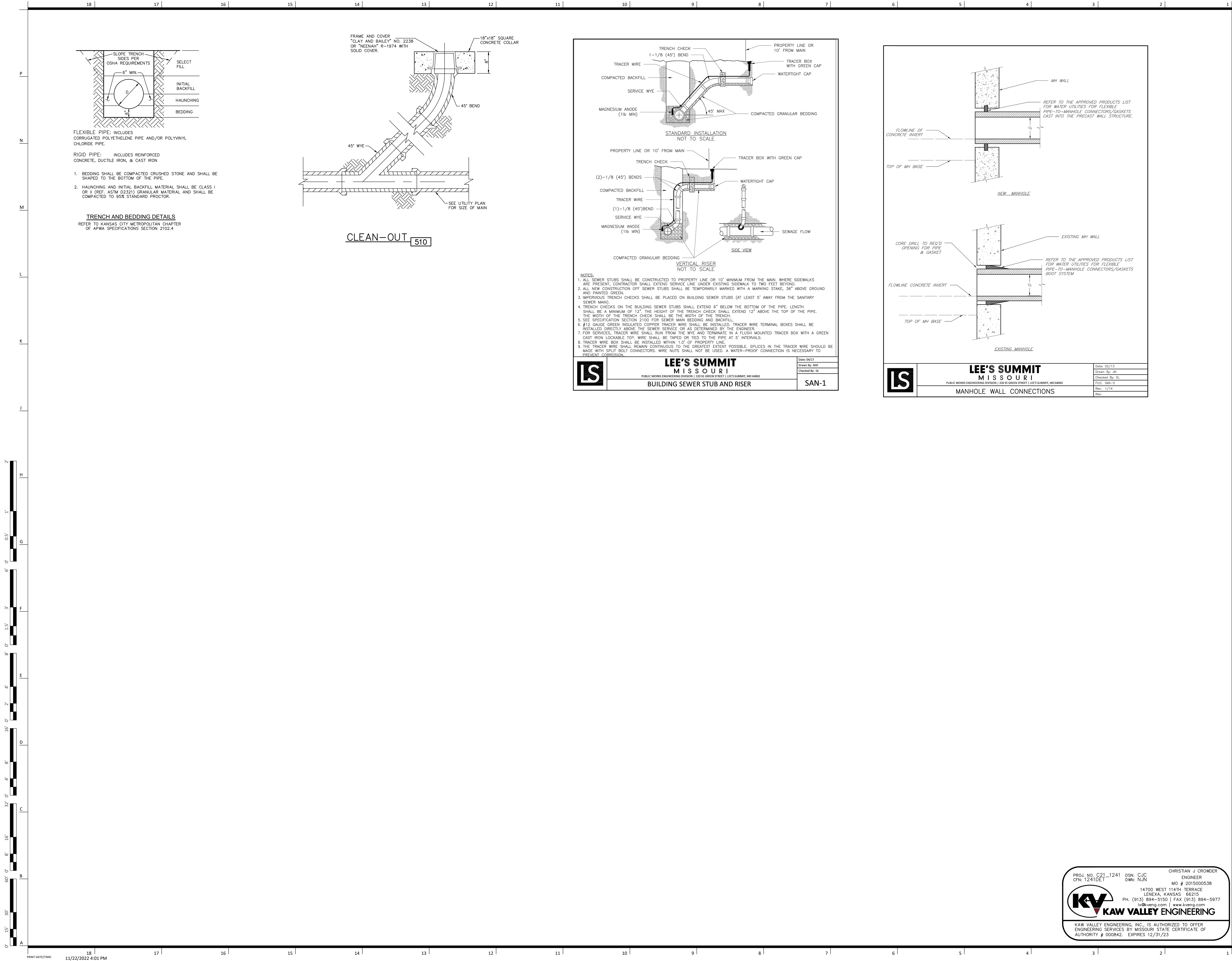
THE DESIGNS REPRESENTED IN THESE PLANS ARE IN ACCORDANCE WITH ESTABLISHED PRACTICES OF CIVIL ENGINEERING FOR THE DESIGN FUNCTIONS AND USES INTENDED BY THE OWNER AT THIS TIME. HOWEVER, NEITHER KAW VALLEY ENGINEERING, INC NOR ITS PERSONNEL CAN OR DO WARRANTY THESE DESIGNS OR PLANS AS CONSTRUCTED, EXCEPT IN THE SPECIFIC CASES WHERE KAW VALLEY ENGINEERING PERSONNEL INSPECT AND CONTROL THE PHYSICAL CONSTRUCTION ON A CONTEMPORARY BASIS AT THE SITE.

CAUTION - NOTICE TO CONTRACTOR

THE CONTRACTOR IS SPECIFICALLY CAUTIONED THAT THE LOCATION AND/OR ELEVATION OF EXISTING UTILITIES AS SHOWN ON THESE PLANS IS BASED ON RECORDS OF THE VARIOUS UTILITY COMPANIES AND, WHERE POSSIBLE, MEASUREMENTS TAKEN IN THE FIELD. THE INFORMATION IS NOT TO BE RELIED ON AS BEING EXACT OR COMPLETE. THE CONTRACTOR MUST CALL THE APPROPRIATE UTILITY COMPANY AT LEAST 72 HOURS BEFORE ANY EXCAVATION TO REQUEST EXACT FIELD LOCATION OF UTILITIES. IT SHALL BE THE RESPONSIBILITY OF THE CONTRACTOR TO RELOCATE ALL EXISTING UTILITIES WHICH CONFLICT WITH PROPOSED IMPROVEMENTS SHOWN ON THE PLANS. THE CONTRACTOR SHALL EXPOSE EXISTING UTILITIES AT LOCATIONS OF POSSIBLE CONFLICTS PRIOR TO ANY CONSTRUCTION.



PROJ. NO. C21-1241 DSN: CJC CHRISTIAN J. CROWDER
CPL: 1241SPF DWN: NJN ENGINEER
MO # 2015000538
14700 WEST 114TH TERRACE
LENEXA, KANSAS 66215
PH. (913) 894-5150 | FAX (913) 894-5977
x@kveng.com | www.kveng.com
KAW VALLEY ENGINEERING
KAW VALLEY ENGINEERING, INC. IS AUTHORIZED TO OFFER
ENGINEERING SERVICES BY MISSOURI STATE CERTIFICATE OF
AUTHORITY # 000842. EXPIRES 12/31/23



Lee's Summit Robotics,
Gic & Phys Educaiton

LSN: 901 NE Douglas St., Lee's Summit MO
64086
LSW: 2600 SW Ward Rd, Lee's Summit MO
64082
LSHS: 400 SE Blue Pkwy, Lee's Summit MO 64063

Project Number: 0121-0100

owner: Lee's Summit R-7 School
301 NE Tudor Road
Lee's Summit, MO 64086
architect: Multistudio
4209 Pennsylvania
Kansas City, MO 64111
816.931.6655
multi-studio
civil engineer: Kaw Valley Engineering
14700 West 114th Terrace
Lenexa, KS 66215
913.485.0318
kveg.com
structural engineer: Bob D. Campbell &
4338 Bellevue
Kansas City, MO 64111
816.531.4144
www.bdc-engrs.com

MEP/IT/Code: Henderson Engineers
8345 Lenexa Drive, Suite
300
Lenexa, KS 66214
816.742.5000
www.hendersonengineers.com

Issue Date: September 9, 2022

NUMBER	DESCRIPTION	DATE
1	AS1 01 - CODE COMMENTS	11/22/2022

RELEASED FOR
CONSTRUCTION
As Noted on Plans Review
Development Services Department
Lee's Summit, Missouri
12/02/2022

UNLESS A PROFESSIONAL SEAL WITH SIGNATURE AND DATE IS
AFFIXED, THIS DOCUMENT IS PRELIMINARY AND IS NOT INTENDED FOR
CONSTRUCTION, RECORDING PURPOSES OR IMPLEMENTATION



Kaw Valley Engineering, Inc.
Missouri Certificate of Authority: 000842
Christian Crowder Date: 11/22/2022
Engineer License No. PE-2015000538

LSN SANITARY DETAILS

PROJ. NO. C21_1241
CPL: 1241DET

DSN: CJC
DWN: NJN

ENGINEER
MO # 2015000538
14700 WEST 114TH TERRACE
LENEXA, KANSAS 66215
PH. (913) 894-5150 | FAX (913) 894-5977
x@kveg.com | www.kveg.com

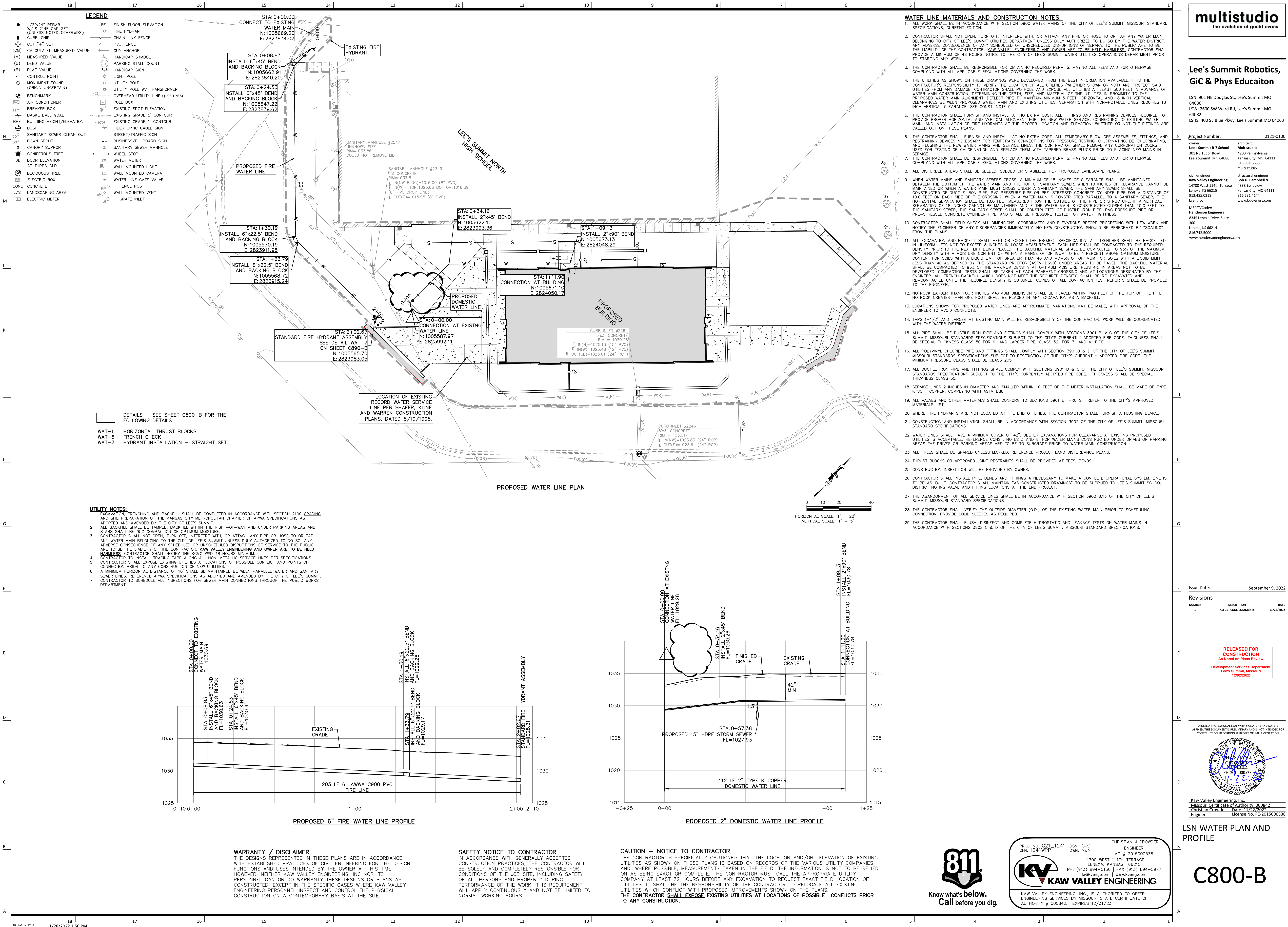
KAW VALLEY ENGINEERING

KAW VALLEY ENGINEERING, INC. IS AUTHORIZED TO OFFER
ENGINEERING SERVICES BY MISSOURI STATE CERTIFICATE OF
AUTHORITY # 000842. EXPIRES 12/31/23

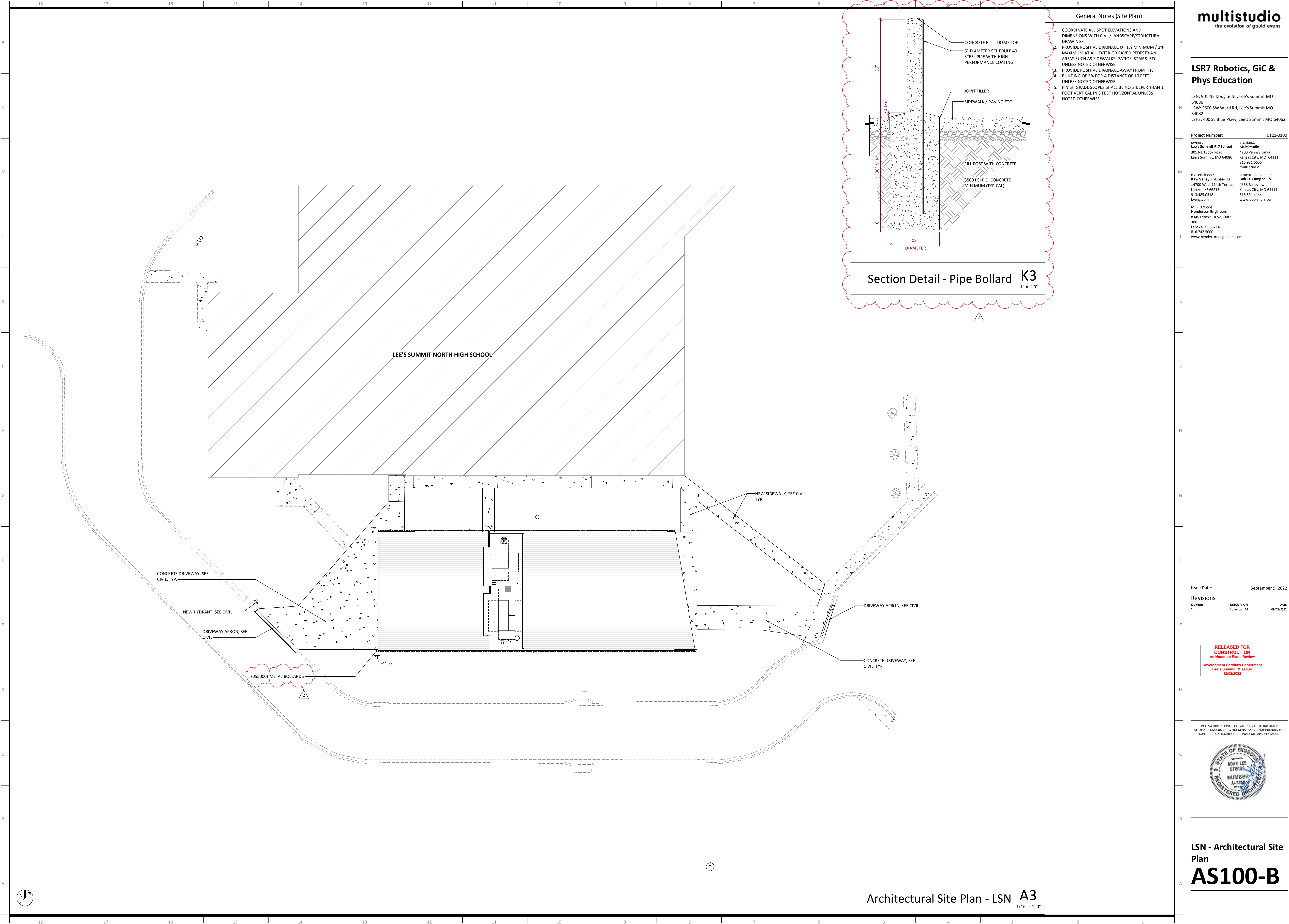
CHRISTIAN J CROWDER
ENGINEER
MO # 2015000538

11/22/2022

C790-B



KAW VALLEY ENGINEERING, INC., IS AUTHORIZED TO OFFER
ENGINEERING SERVICES BY MISSOURI STATE CERTIFICATE OF
AUTHORITY # 000842 EXPIRES 12/31/23



LSR7 Robotics, GiC & Phys Education

LSN: 901 NE Douglas St., Lee's Summit MO 64086
LSW: 2600 SW Ward Rd, Lee's Summit MO 64082
LSHS: 400 SE Blue Pkwy, Lee's Summit MO 64063

Project Number: 0121-0100

owner: Lee's Summit R-7 School
301 NE Tudor Road
Lee's Summit, MO 64086

architect: Multistudio
4300 Pennsylvania
Kansas City, MO 64111
816.931.6655
multistudio

civil engineer: Kaw Valley Engineering
14700 West 114th Terrace
Lenexa, KS 66215
913.485.0318
kveg.com

structural engineer: Bob D. Campbell &
4338 Bellevue
Kansas City, MO 64111
816.531.4144
www.bdc-engrs.com

MEP/ET/Code: Henderson Engineers
8345 Lenexa Drive, Suite 300
Lenexa, KS 66214
816.742.5000
www.hendersonengineers.com

Issue Date: September 9, 2022

Revisions		
NUMBER	DESCRIPTION	DATE
2	Addendum 02	09/23/2022

RELEASED FOR CONSTRUCTION
As Noted on Plans Review
Development Services Department
Lee's Summit, Missouri
12/02/2022

UNLESS A PROFESSIONAL SEAL WITH SIGNATURE AND DATE IS AFFIXED, THIS DOCUMENT IS PRELIMINARY AND IS NOT INTENDED FOR CONSTRUCTION, RECORDING PURPOSES OR IMPLEMENTATION.



LSN - Architectural Site Plan

AS100-B