

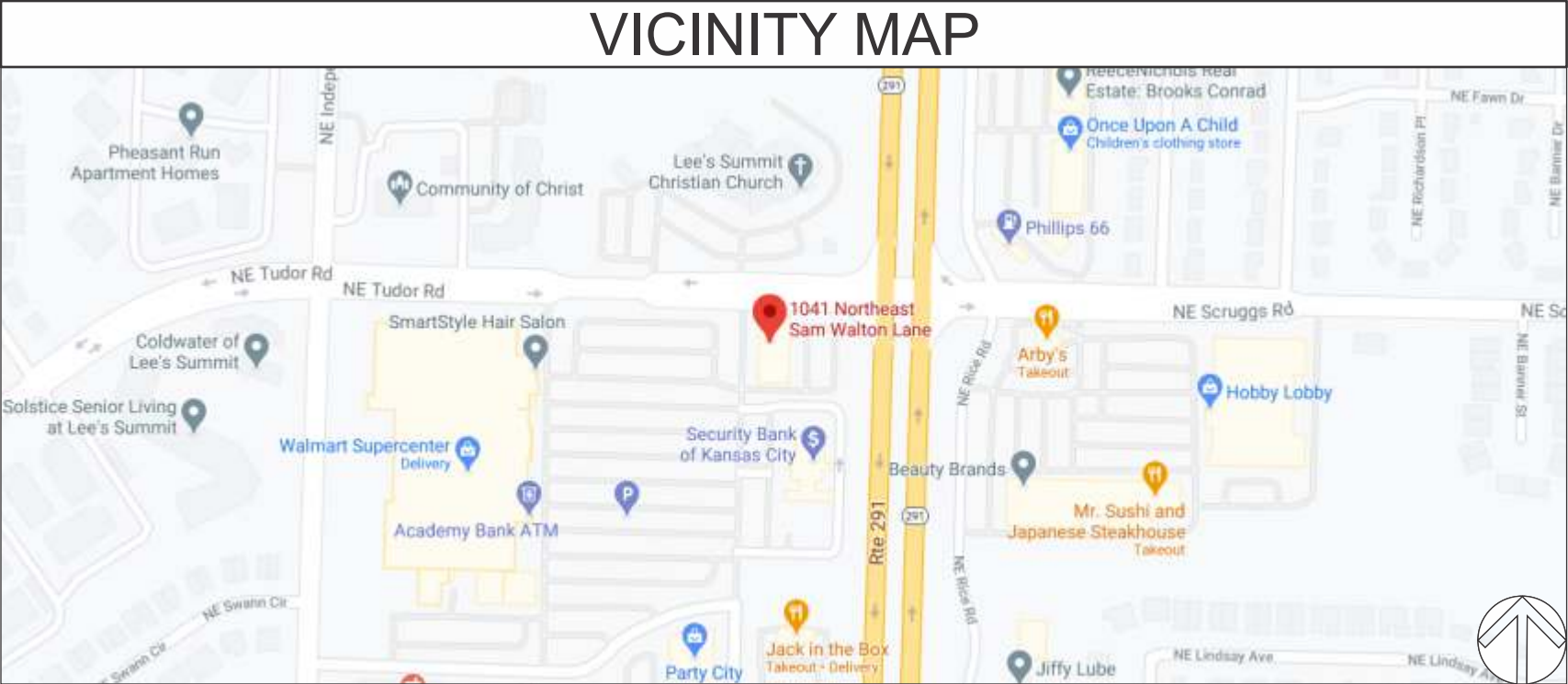
PROJECT SCHEDULE		
SIGN TYPE/ DESCRIPTION:	QTY.:	PG.
D. INTERNALLY ILLUMINATED FACE-LIT CHANNEL LETTERS W/ BACKGROUND PANEL ON WIREWAY (EYEMART)	ONE (1)	3

PROJECT:



WALMART SUPERCENTER
1041 NE SAM WALTON LANE
LEE’S SUMMIT, MO 64086

REVISIONS			
#	DATE	DB	NOTES



	CLIENT & LOCATION 	WALMART SUPERCENTER 1041 NE SAM WALTON LANE LEE’S SUMMIT, MO 64086	LEAD NO. 205400	DATE 11/11/2022	REVIEWED BY	REVISION	SHEET NO. 1 of 5
			SALESMAN S. ALTSHULER	DRAWN BY MAF	SEG. NO.		

REAR ELEVATION - FACING WALMART SUPERCENTER

SCALE: N.T.S.



TRIANGLE
SIGN SERVICES

CLIENT & LOCATION

EYEMART

WALMART SUPERCENTER
1041 NE SAM WALTON LANE
LEE'S SUMMIT, MO 64086

LEAD NO.
205400

DATE
11/11/2022

REVIEWED BY

REVISION

SHEET NO.

SALESMAN
S. ALTSHULER

DRAWN BY
MAF

SEG. NO.

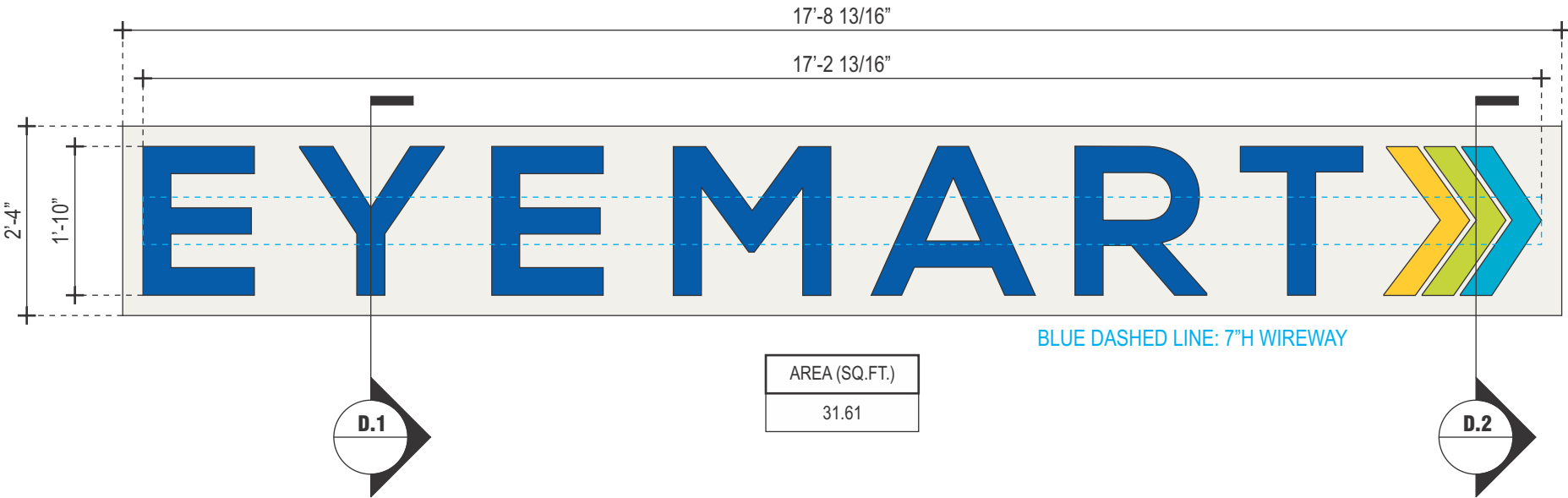
2 of 5

D

INTERNALLY ILLUMINATED FACE-LIT CHANNEL LETTERS W/ BACKGROUND PANEL ON WIREWAY

SCALE: 1/2" = 1'-0"

QTY.: ONE (1)



BLUE DASHED LINE: 7"H WIREWAY



TRIANGLE
SIGN SERVICES

CLIENT & LOCATION

EYEMART

WALMART SUPERCENTER
1041 NE SAM WALTON LANE
LEE'S SUMMIT, MO 64086

LEAD NO.
205400

DATE
11/11/2022

REVIEWED BY

REVISION

SHEET NO.

SALESMAN
S. ALTSHULER

DRAWN BY
MAF

SEG. NO.

3 of 5

SCALE: N.T.S.



I WIRING	
I-C:	BUSHING.
I-D:	DISCONNECT SWITCH @ SIDE OF RACEWAY.
I-F:	SEE ELEC. NOTE. 120V PRIMARY IN J-BOX BY OTHERS.
I-T:	14awg FEED IN 1/2"Ø SEAL-TITE w/ 1/2" CONNECTORS.
I-J:	STANDARD JUNCTION BOX.
I-H:	W.P. BOX @ DISCONNECT SWITCH.
I-P:	LIQUID TIGHT CONNECTOR.
I-S:	U.L. APPROVED CLASS II LOW VOLTAGE WIRE.
	(ALL CONNECTIONS TO BE IN WATERPROOF BOXES).
J POWER SUPPLY	
TYPE:	LED POWER SUPPLY HOUSE IN RACEWAY.
VOLTAGE:	120V.
R WIREWAY	
MATERIAL:	7" x 4" ALUM. LED EXTRUSION RACEWAY, TOP ACCESS.
COLOR/ FINISH:	PAINT TO MATCH EXISTING FASCIA FINISH.
M MOUNTING	
M-1:	SEE MOUNTING NOTE. REQ'D. BLOCKING BY OTHERS.
M-2:	MOUNTING BARS 2"W. x 1/4" ALUM. w/ 3/4"Ø MNTG. HOLE.
M-3:	3/8"Ø ALLTHREAD, NUT & WASHERS INTO BLOCKING BEYON
M-4:	SELF-TAPPING SCREW.
W WEEP HOLE	
TYPE:	1/4"Ø w/ COVERS.

INSTALL

- ## ELECTRICAL

- ## FABRICATOR

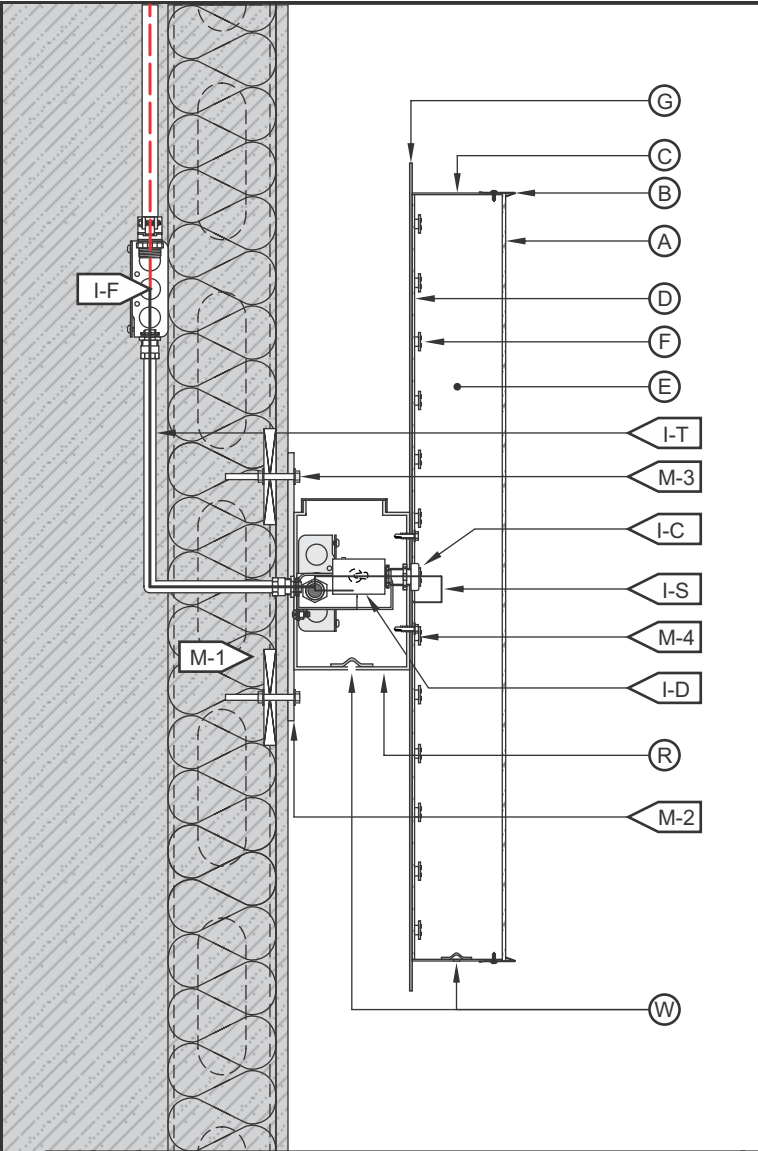
- 

TRIANGLE
SIGN SERVICES



SALESMAN
S. ALTSHULER

4 of 5



“LOGO” FACE-LIT CHANNEL LETTER / LED ILLUMINATION / EXTERIOR INSTALL / WIREWAY MOUNTED / BG PANEL

D.2
SCALE: N.T.S.

A FACE	
MATERIAL:	3/16" WHITE PLEX #2447.
VINYL:	TRANSLUCENT
COLOR:	PRINT TO MATCH PMS 2935U, 115U, 312U & 381U
B TRIMCAP	
SIZE / FINISH	1" / MATCH RETURNS.
C RETURN	
DEPTH:	5".
MATERIAL:	0.040" ALUM.
COLOR/ FINISH:	OFF-WHITE/ SATIN.
D BACK	
MATERIAL:	3MM ACM.
COLOR/ FINISH:	OFF-WHITE/ SATIN.
E INSIDE OF CAN	
COLOR:	PRE-COAT WHITE.
F ILLUMINATION	
TYPE/COLOR:	LEDS/6500K WHITE
G BG PANEL	
MATERIAL:	1/8" ALUMINUM
COLOR/FINISH:	OFF-WHITE/SATIN
OFF-WHITE	
PMS 115U	
PMS 381U	
PMS 312U	
PMS 2935U	

I WIRING	
I-C:	BUSHING.
I-D:	DISCONNECT SWITCH @ SIDE OF RACEWAY.
I-F:	SEE ELEC. NOTE. 120V PRIMARY IN J-BOX BY OTHERS.
I-T:	14awg FEED IN 1/2"Ø SEAL-TITE w/ 1/2" CONNECTORS.
I-J:	STANDARD JUNCTION BOX.
I-H:	W.P. BOX @ DISCONNECT SWITCH.
I-P:	LIQUID TIGHT CONNECTOR.
I-S:	U.L. APPROVED CLASS II LOW VOLTAGE WIRE.
(ALL CONNECTIONS TO BE IN WATERPROOF BOXES).	
J POWER SUPPLY	
TYPE:	LED POWER SUPPLY HOUSE IN RACEWAY.
VOLTAGE:	120V.
R WIREWAY	
MATERIAL:	7" x 4" ALUMINUM EXTRUSION, TOP ACCESS.
COLOR/ FINISH:	MATCH FASCIA.
M MOUNTING	
M-1:	SEE MOUNTING NOTE. REQ'D. BLOCKING BY OTHERS.
M-2:	MOUNTING BARS 2"W. x 1/4" ALUM. w/ 3/4"Ø MNTG. HOLE.
M-3:	3/8"Ø ALLTHREAD, NUT & WASHERS INTO BLOCKING BEYOND.
M-4:	SELF-TAPPING SCREW.
W WEEP HOLE	
TYPE:	1/4"Ø w/ COVERS.

120V

INSTALL

1. CUSTOMER G.C. TO PROVIDE ADEQUATE WOOD OR MTL. BLOCKING IN CORRELATION W/ FACADE FRAMING AS REQUIRED.
2. INSTALLER IS TO V.I.F. & PROVIDE THE PROPER NON-CORROSIVE MOUNTING HARDWARE TO ENSURE SAFE INSTALLATION.
3. ALL EXTERIOR FACADE PENETRATIONS TO BE WATERTIGHT.
4. INSTALLATION TO MEET CURRENT N.E.C., U.L. & LOCAL CODES. LOCATION OF THE DISCONNECT SWITCH AFTER INSTALLATION SHALL COMPLY WITH ARTICLE 600.6(A) (1) OF THE NATION ELECTRICAL CODE

ELECTRICAL

1. ALL ELECTRICAL COMPONENTS TO BE U.L. APPROVED.
2. CUSTOMER IS RESPONSIBLE FOR ONE (1) 120v/ 20a DEDICATED CIRCUIT w/ GROUND PER SIGN TO WITHIN 6' OF SIGN.
3. THIS SIGN IS INTENDED TO BE INSTALLED IN ACCORDING W/ THE REQUIREMENTS OF ARTICLE 600 OF THE NATIONAL ELECTRICAL CODE AND/OR OTHER APPLICABLE LOCAL CODES. THIS INCLUDES PROPER GROUNDING & BONDING OF THE SIGN.

FABRICATOR

1. PLACEMENT OF LIGHTING ELEMENTS FOR OPTIMUM ILLUMINATION OF SIGN TO BE DETERMINED IN PRODUCTION.
2. MANUFACTURER & U.L. LABELS TO BE APPLIED & VISIBLE FROM THE GROUND. LOCATED ON THE LAST CHANNEL LETTER OR END OF THE SIGN BOX/FREESTANDING SIGN



ALL ELECTRICAL
COMPONENTS ARE
TO BE UL APPROVED

TRIANGLE
SIGN SERVICES

CLIENT & LOCATION

EYEMART

WALMART SUPERCENTER
1041 NE SAM WALTON LANE
LEE'S SUMMIT, MO 64086

LEAD NO.

205400

DATE

11/11/2022

REVIEWED BY

REVISION

SHEET NO.

SALESMAN

S. ALTSHULER

DRAWN BY

MAF

SEG. NO.

5 of 5