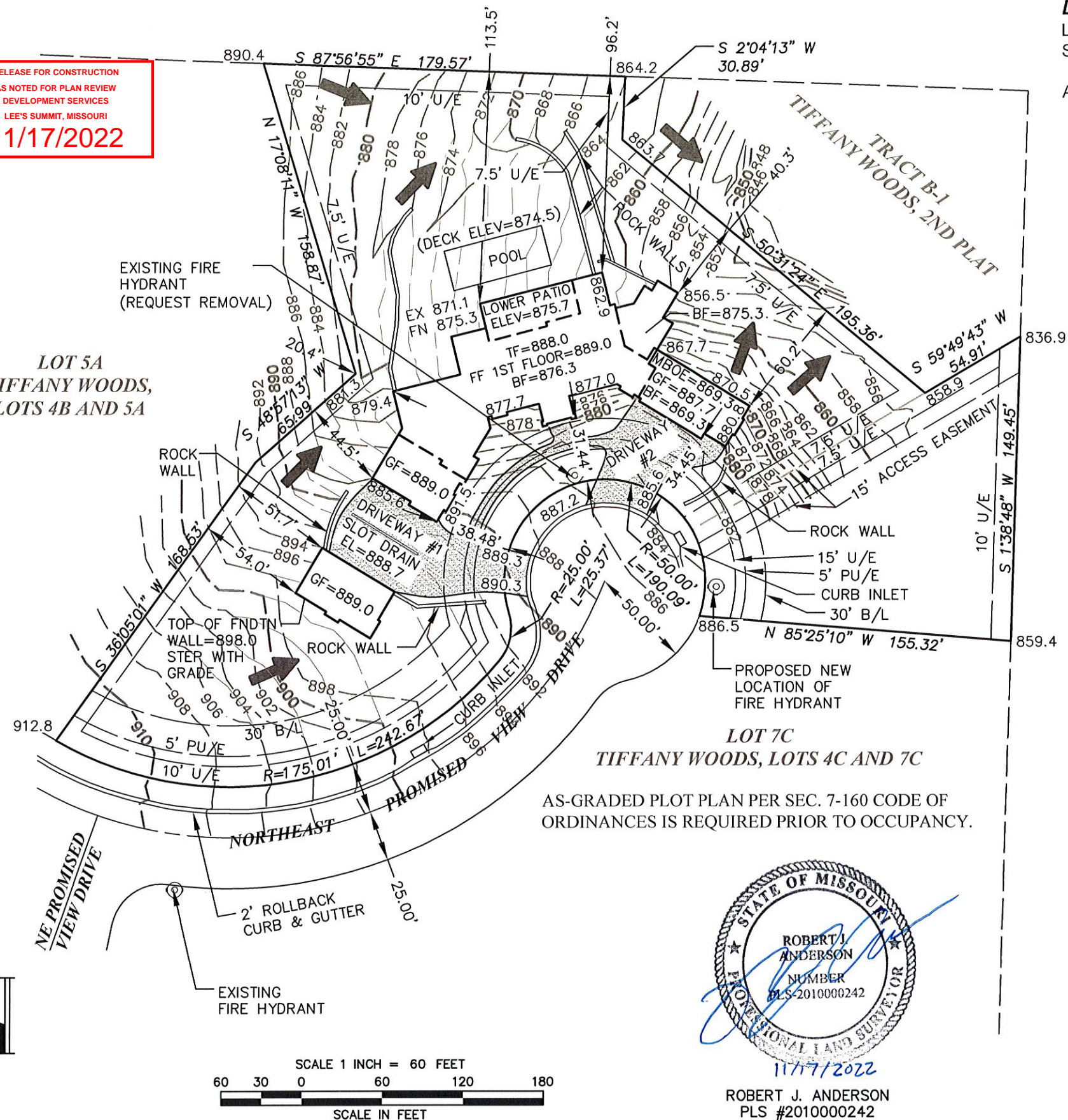


RELEASE FOR CONSTRUCTION
AS NOTED FOR PLAN REVIEW
DEVELOPMENT SERVICES
LEE'S SUMMIT, MISSOURI
11/17/2022

LOT 5A
TIFFANY WOODS,
LOTS 4B AND 5A



DESCRIPTION:

LOT 4C, TIFFANY WOODS, LOTS 4C AND 7C, A SUBDIVISION IN LEE'S SUMMIT, JACKSON COUNTY, MISSOURI.

ADDRESS: 512 NE PROMISED VIEW DRIVE, LEE'S SUMMIT, MISSOURI 64064

LEGEND

B/L	BUILDING SETBACK LINE
PU/E	PRIVATE UTILITY EASEMENT
U/E	UTILITY EASEMENT (PUBLIC)
BF	BASEMENT FLOOR ELEVATION
FF	FINISHED FLOOR ELEVATION
GF	GARAGE FLOOR ELEVATION
TF	TOP OF FOUNDATION ELEVATION
MBOE	MINIMUM BUILDING OPENING ELEVATION
→	DRAINAGE DIRECTION ARROW
---	EXISTING CONTOUR LINE

BASEMENT TYPE: WALKOUT

DRIVEWAYS

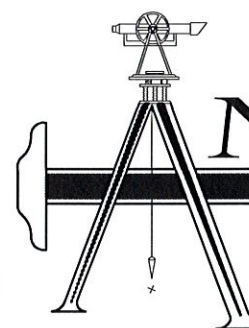
DRIVEWAY #1	
WIDTH AT CURB	20.0'
WIDTH AT GARAGES	40.0'
DRIVEWAY #2	
WIDTH AT CURB	29.6'
WIDTH AT GARAGE	50.2'

BUILDING & PROPERTY ELEVATIONS

THE BUILDING CORNER AND PROPERTY CORNER ELEVATIONS ARE EXISTING AND FINISHED, UNLESS NOTED OTHERWISE (EX = EXISTING, FN = FINISHED)

NOTE: THE CONTOUR LINES SHOWN HEREON WERE TAKEN FROM A SURVEY BY PHELPS ENGINEERING, INC. DATED MARCH 20, 2020 WITH MODIFICATIONS FROM A SKETCH BY STARR DEVELOPMENT.

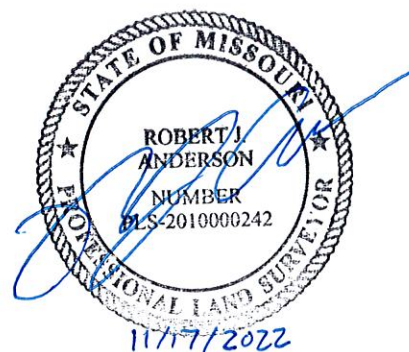
PLOT PLAN



ANDERSON

SURVEY COMPANY
1270 NE DELTA SCHOOL ROAD
LEE'S SUMMIT, MISSOURI 64064
(816) 246-5050

MISSOURI STATE CERTIFICATE OF AUTHORITY, 000076



ROBERT J. ANDERSON
PLS #2010000242