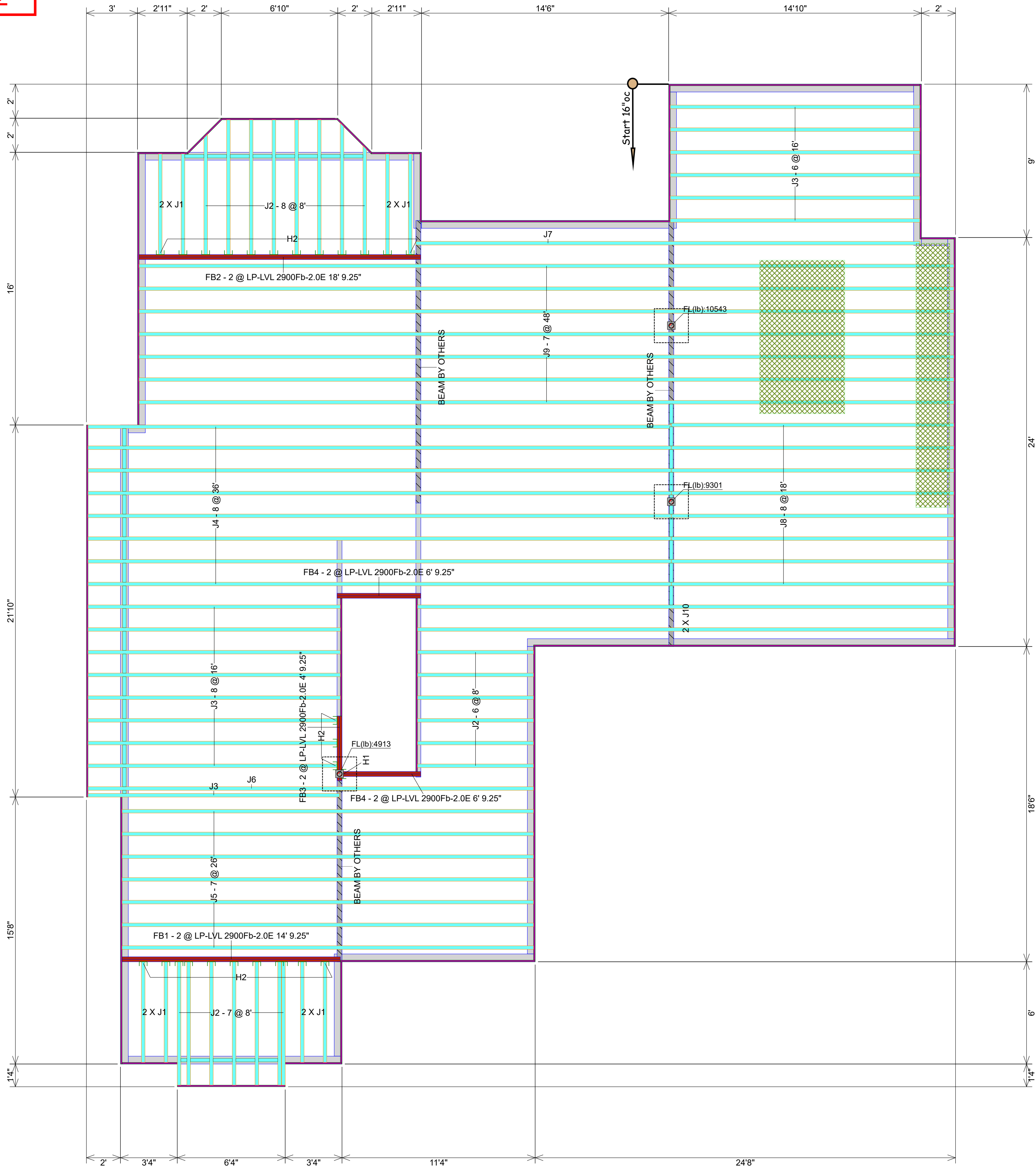
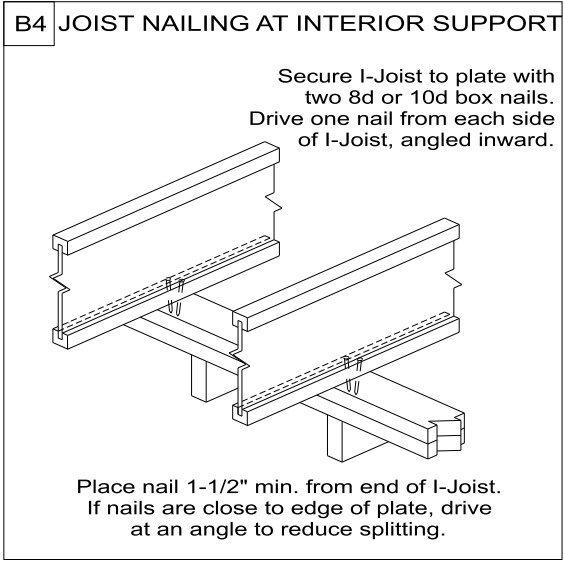
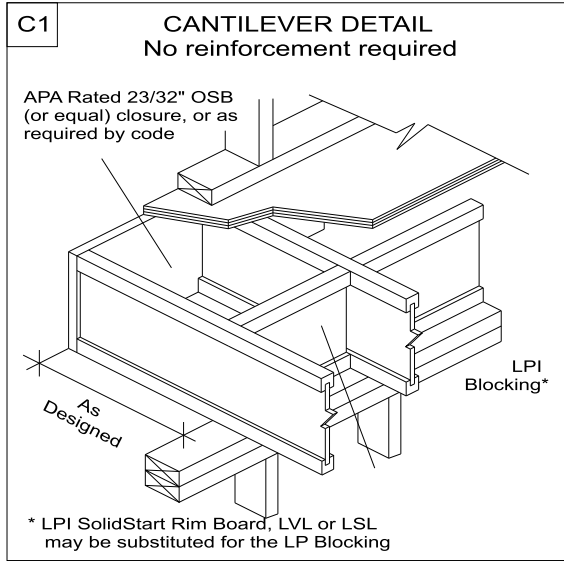


11/10/2022



FIRST FLOOR JOIST PLACEMENT PLAN
LOT 50 - WISPERING WOODS
TL22084ATH

Scale 1/4 inch = 1 ft.



GENERAL NOTES

1. GENERAL JOISTS TO BE 11-7/8" LPI20 PLUS @ 16" O.C. TYP. UNLESS OTHERWISE NOTED
2. ALL BLOCKING PER STRUCTURAL PLAN
3. LOADING TO BE 40 PSF LL - 15 PSF DL

AMERHART

400 MARSHVIEW DRIVE
SUN PRAIRIE, WI 53590
1-800-879-7123
1-608-834-2253

ADDITIONAL NOTES

1. ALWAYS READ PRODUCT BROCHURE BEFORE INSTALLATION OF EWP PRODUCTS.
2. REFER TO HOLE CHARTS PRIOR TO DRILLING PRODUCT.
3. THIS DOCUMENT IS INTENDED SOLEY AS A PLACEMENT PLAN. IT IS TO BE REVIEWED BY THE ENGINEER OF RECORD AND MUST MEET HIS/HER APPROVAL PRIOR TO INSTALLATION OF OUR PRODUCT.
4. THIS DOCUMENT IS NOT TO BE USED AS A REPLACEMENT FOR YOUR ORIGINAL STRUCTURAL PLANS.
5. LAYOUT, QUANTITY AND LENGTH TO BE VERIFIED BY CONTRACTOR.
6. IF WALLS ARE SPECIFIED IN THIS QUOTE, CONTRACTOR MUST VERIFY ALL DIMENSIONS AND ROUGH OPENING SIZES PRIOR TO CONSTRUCTION OF WALL. ROUGH OPENING SIZES ARE ESTIMATES ONLY. TALL WALL IS DESIGNED FOR VERTICAL LOADS AND DIRECT WIND LOADS ONLY. INLINE LATERAL BRACING OF THE BUILDING DIAPHRAGM IS TO BE ACCOUNTED FOR BY THE BUILDING DESIGNER/ENGINEER.

Ground Floor

I Joist

Label	Description	Width	Depth	Qty	Plies	Pcs	Length
J9	LPI 20 Plus	2.5	9.5			7	48-0-0
J4	LPI 20 Plus	2.5	9.5			8	36-0-0
J10	LPI 20 Plus	2.5	9.5			2	32-0-0
J7	LPI 20 Plus	2.5	9.5			1	30-0-0
J6	LPI 20 Plus	2.5	9.5			1	28-0-0
J5	LPI 20 Plus	2.5	9.5			7	26-0-0
J8	LPI 20 Plus	2.5	9.5			8	18-0-0
J3	LPI 20 Plus	2.5	9.5			15	16-0-0
J2	LPI 20 Plus	2.5	9.5			21	8-0-0
J1	LPI 20 Plus	2.5	9.5			8	6-0-0

Blocking

Label	Description	Width	Depth	Qty	Plies	Pcs	Length
BLK1	LPI 20 Plus	2.5	9.5			39	2-0-0

Rim Board

Label	Description	Width	Depth	Qty	Plies	Pcs	Length
R1	LP APA Rated OSB 1.125 X 9.5	1.125	9.5			20	12-0-0

LVL/LSL

Label	Description	Width	Depth	Qty	Plies	Pcs	Length
FB2	LP-LVL 2900Fb-2.0E	1.75	9.25	1	2	2	18-0-0
FB1	LP-LVL 2900Fb-2.0E	1.75	9.25	1	2	2	14-0-0
FB4	LP-LVL 2900Fb-2.0E	1.75	9.25	2	2	4	6-0-0
FB3	LP-LVL 2900Fb-2.0E	1.75	9.25	1	2	2	4-0-0

Hanger

				Beam/Girder		Supported Member
Label	Pcs	Description	Skew	Slope	fasteners	fasteners
H1	1	HU410 (Min)			14 16d	6 10d
H2	26	IUS2.56/9.5 (Min)			8 10d	

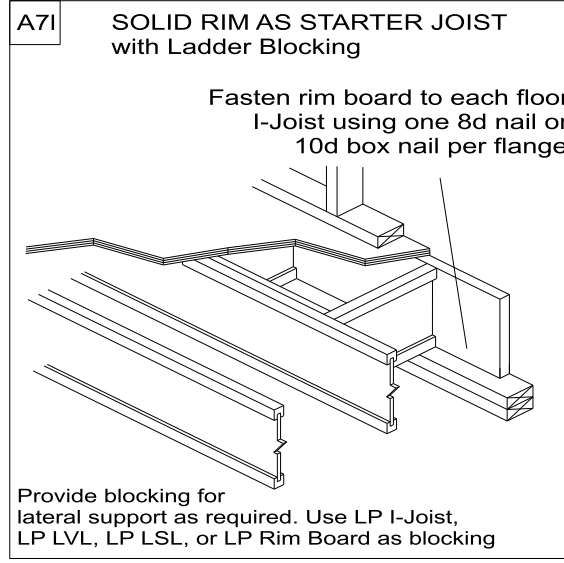
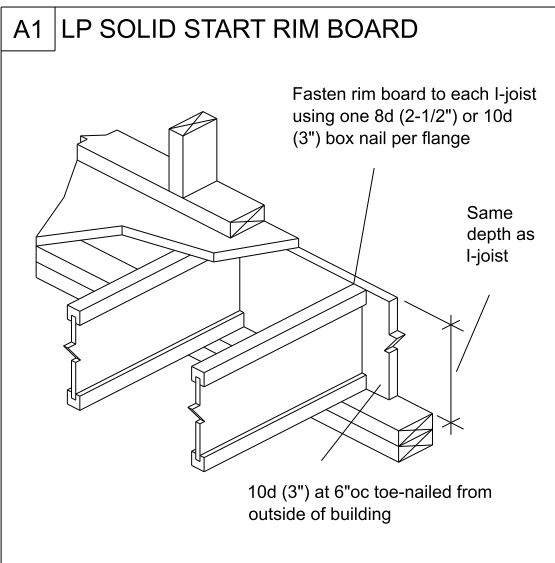
☒ Conforms to Design Concept

☐ Conforms to Design Concept with Revisions Noted

☐ Non-Conforming; Revise and Resubmit

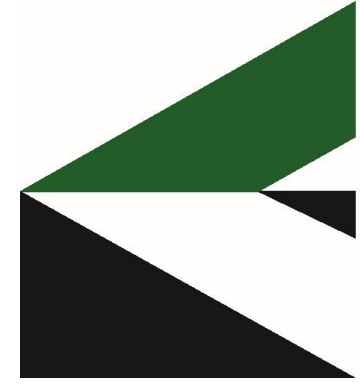
THIS SHOP DRAWING HAS BEEN REVIEWED FOR GENERAL CONFORMANCE WITH DESIGN CONCEPT ONLY AND DOES NOT RELIEVE THE FABRICATOR, VENDOR, OR ORIGINAL DESIGN ENGINEER OF RESPONSIBILITY FOR CONFORMANCE WITH DESIGN DRAWINGS, SPECIFICATIONS, AND APPLICABLE CODES, ALL OF WHICH HAVE PRIORITY OVER THIS SHOP DRAWING.

By:  Date: 11/10/22
R.E.O. ENGINEERING, P.C.



Layout Name
LOT 50 - WISPERING WOODS

Amerhart



Project	TL22084ATH
Created	June 02, 2022
Designer	Thomas Hamrick
Layout Name	LOT 50 - WISPERING WOODS
Dealer	TEAGUE LUMBER
Revised	June 02, 2022