

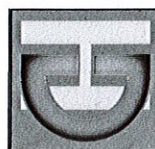
RELEASED FOR
CONSTRUCTION
As Noted on Plans Review

Development Services Department
Lee's Summit, Missouri
11/09/2022

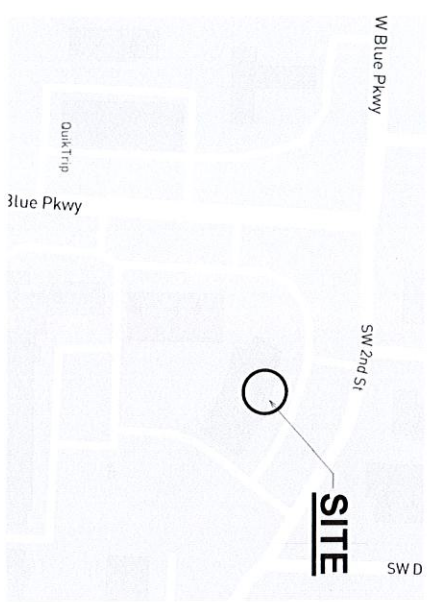
GENERAL USE OFFICE 657 SW 2ND ST LEE'S SUMMIT, MO

CONTRACTOR:
PACT
JEREMY HOPKE
1280 NE DELTA SCHOOL ROAD
LEE'S SUMMIT, MO 64064
PHONE: 816-645-6288

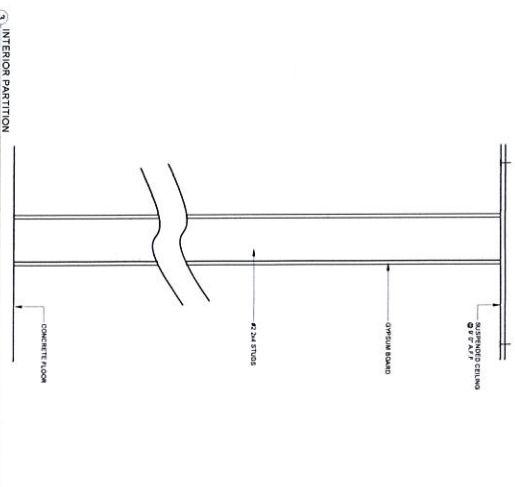
ENGINEER:
HD ENGINEERING & DESIGN, INC.
11656 W 75TH STREET
SHAWNEE, KS 66214
CONTACT: CHRIS SAATHOFF
PHONE: 913-631-2222



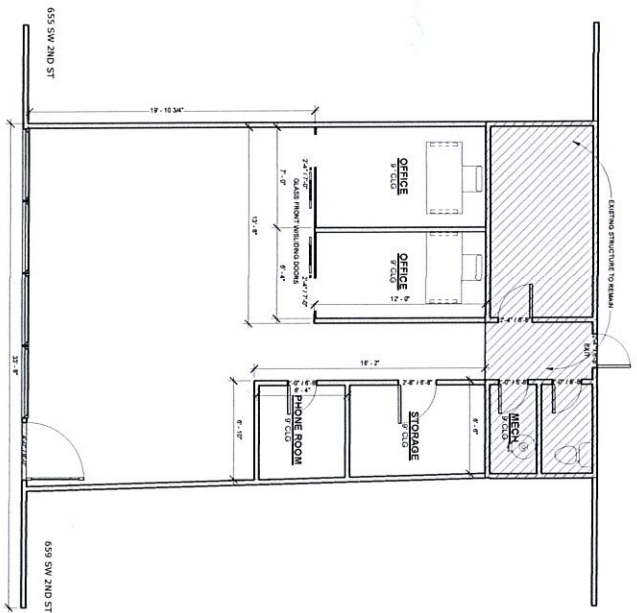
HD ENGINEERING & DESIGN, INC.
11656 W 75TH STREET
SHAWNEE, KS 66214
WWW.HDENGINEERS.COM
913.631.2222
SERVICE@HDENGINEERS.COM



VICINITY MAP



INTERIOR PARTITION
N.T.S.



FLOOR PLAN
1/4" = 1'-0"

NEST WORK HOMES
657 SW 2ND ST
LEE SUMMIT, MO

HD#:	44991	
DATE:	10/25/2022	
CHECKED BY:	CLS	
NO	ISSUE/REVISION	Revision Date

G-1

THIS PLAN IS THE PROPERTY OF HD ENGINEERING & DESIGN, INC. AND IS NOT TO BE REPRODUCED OR TRANSMITTED IN ANY FORM OR BY ANY MEANS, ELECTRONIC OR MECHANICAL, WITHOUT PERMISSION IN WRITING FROM HD ENGINEERING & DESIGN, INC.

**RELEASED FOR
CONSTRUCTION**
As Noted on Plans Review
Development Services Department
Lee's Summit, Missouri
11/09/2022

Existing Electrical Outlet - ■ 657 SW 2nd St., Lee's Summit, MO 64063

Doors - ■ Contact: Cary Stronach, 913-707-9439, cary@nest.work

New Walls - - - -

