

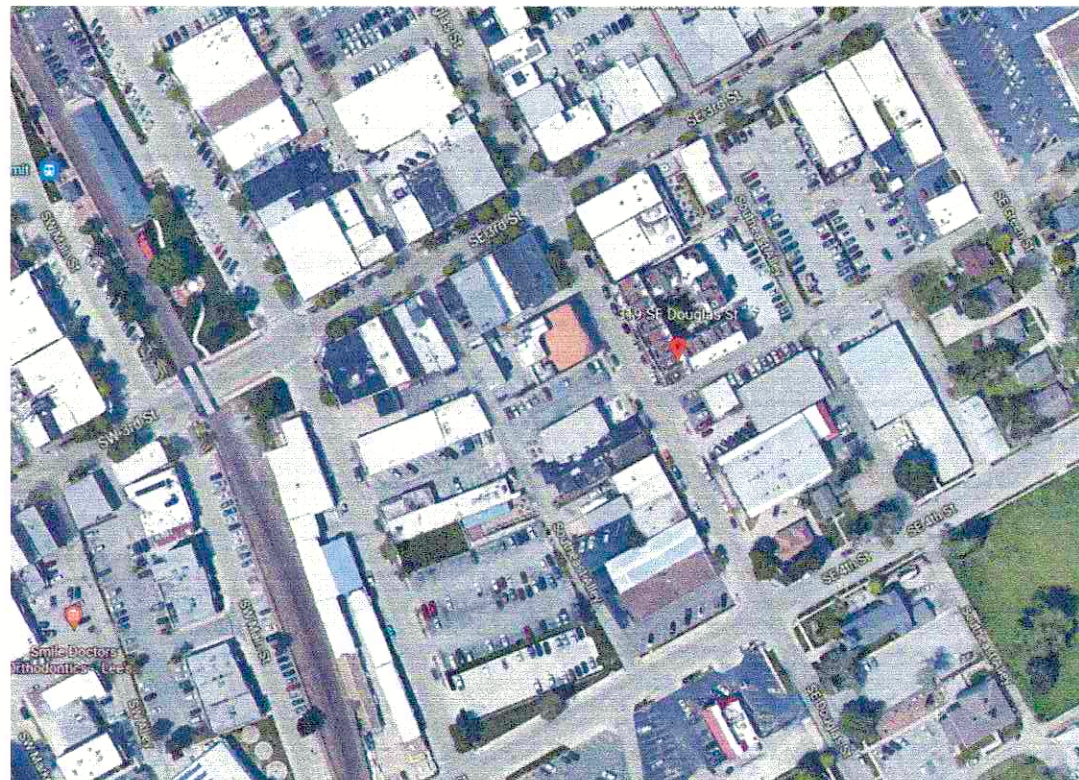
RELEASE FOR CONSTRUCTION
AS NOTED FOR PLAN REVIEW
DEVELOPMENT SERVICES
LEE'S SUMMIT, MISSOURI
11/04/2022

LEGEND:

ADD - A
RELOCATE - R
EXISTING TO REMAIN - ETR
NEW PIPE - —
EXISTING PIPE - - -
CONCEALED SPACE - ▨
SOFFIT - ■

GENERAL NOTE
*ALL SPRINKLER SYSTEMS SHALL CONFORM WITH THE REQUIREMENTS OF NFPA 13R 2016
*ALL HANGER TO BE INSTALLED PER REQUIREMENTS OF NFPA 13R 2016
*THE OWNER SHALL BE RESPONSIBLE FOR PROVIDING ADEQUATE HEAT TO PREVENT WATER FILLED PIPE FROM FREEZING
*SYSTEM PIPE SHALL BE SIZED PER EXISTING SYSTEM / NEW CALCULATIONS ARE NOT REQUIRED

Sprinkler Legend										
Symbol	SIN	Model	Quantity	K-Factor	Type	Size	Response	Finish	Temperature	Note
●	VK460	VIKING	7	5.6	Pendent	1/2	Fast	Chrome	200°F	VIKING VK460 R. - CHROME
○	VK460	VIKING	1	5.6	Pendent	1/2	Fast	Brass	200°F	VIKING VK460 R. - BRASS
			Total = 8							



AREA MAP

DATE:

REVISIONS:

Symbol

Description

Hydraulic Reference Points

Elev. Below Top of Steel

Elev. Above Finished Floor

Elev. of Top of Steel

Ceiling Height

Denotes Hanger Location

Rise up or down

FLEXIBLE COUPLING

HAZARD CLASSIFICATION

BRIAN DAVIDSON'S

BASEMENT

319 SE DOUGLAS #107

LEE'S SUMMIT, MO

PE STAMP:

STATE OF MISSOURI

TOM R. HAMPTON

REGISTERED PROFESSIONAL ENGINEER

10/16/22

AMERICAN

FIRE SPRINKLER

OFFICE: 6750 W. 47TH TERR. MISSION, KS. 66203

MAIL: P.O. BOX 968 MISSION, KS 66201-0968

913-722-6900

FIRE PROTECTION SYSTEMS - CONSULTANTS - DESIGN

FABRICATION - SALES - SERVICE

PAY ITEM: SPR

REVIEWING AUTHORITY: OWNER / LEE'S SUMMIT, MO

ALL HEADS THIS SHEET: 8

TOTAL HEADS THIS JOB: 4

DRAWN BY: COREY SCOTT

DATE: 10-10-2022

REVISION

SCALE: AS SHOWN

CONTRACT: KW40760

DWG #: FP01

SHEET: 1 OF 1



