



ARCHITECT
YAEGER ARCHITECTURE, INC.
8655 Penrose Lane, Suite 300
Lenexa, KS 66219
Tel: (913) 742-8000
Fax: (913) 742-8570
yaegerarchitecture.com
Missouri certificate of authority no: 000270

MEP ENGINEER
Smith & Boucher, Inc.
25618 W. 103rd Street
Olathe, KS 66061
Tel: (913) 345-2127

ADAMS TOYOTA RESTROOM RENOVATION
501 NE COLBERN ROAD
LEE'S SUMMIT, MO 64086

PROJECT NO:	A21093
DATE:	07/12/2022
DRAWN BY:	JG/JW
CHECKED BY:	JW
CHECKED BY:	PL
REVISED DATE	DESCRIPTION
10-10-22	PR#1

OVERALL FLOOR PLAN

A-101
© YAEGER ARCHITECTURE, INC.

FILE PATH: B:\00\21093\Adams Toyota Restroom\A21093-ADAMS_TOYOTA_RESTROOMS_REV04
PLOT DATE: 10/10/22 2:58:17 PM

SHEET SIZE: ARCH E1 30" x 42"

DEMOLITION LEGEND

- PARTITION TO BE REMOVED
- DOOR, FRAME AND HARDWARE TO BE REMOVED
- EXISTING DOOR TO REMAIN
- EXISTING PARTITION TO REMAIN

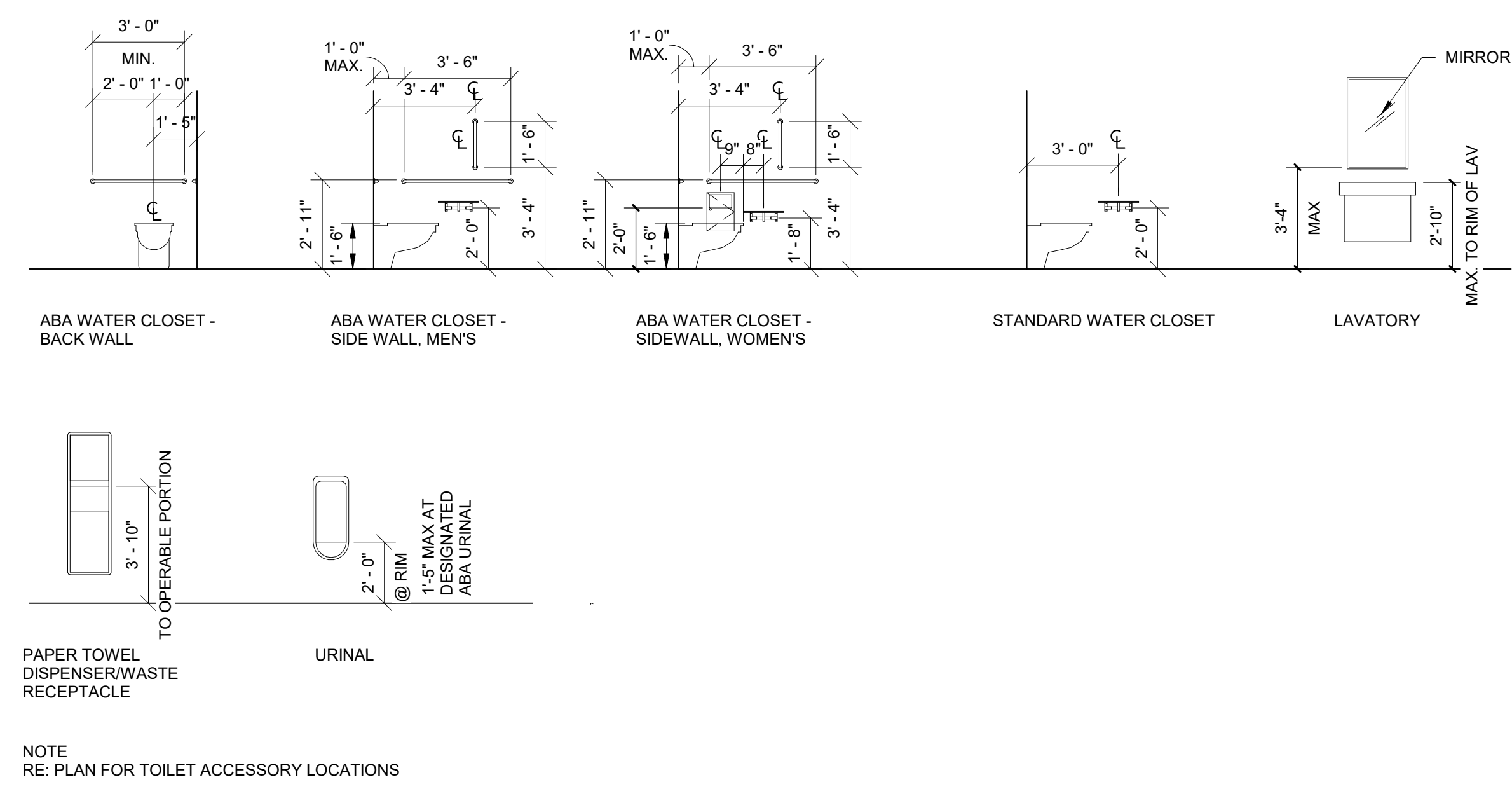
DEMOLITION GENERAL NOTES

- EXISTING WATER CLOSETS AND URINALS SHALL REMAIN IN PLACE. PROTECT DURING CONSTRUCTION. REMOVE ALL EXISTING WASHROOM ACCESSORIES AND STORE PER OWNER'S DIRECTION.

DEMOLITION KEYNOTES

- DEMOLISH EXISTING PARTITION.
- DEMOLISH EXISTING DOOR, FRAME, AND HARDWARE. STORE PER OWNER'S DIRECTION.
- DEMOLISH EXISTING SUSPENDED CEILING PANELS AND GRID. SALVAGE UNDAMAGED CEILING PANELS AND LIGHT FIXTURES FOR OWNER'S ATTIC STOCK.
- DEMOLISH FLOORING FINISH, INCLUDING ALL ADHESIVE, AND PREP FLOOR TO RECEIVE NEW FLOORING FINISH AS SCHEDULED.
- DEMOLISH EXISTING TOILET PARTITIONS. PATCH AND REPAIR WALLS AND FLOORS AS REQUIRED.
- DEMOLISH EXISTING COUNTERTOP AND LAVATORIES. PATCH AND REPAIR WALLS AS REQUIRED TO RECEIVE NEW LAVATORY.
- RELOCATE EXISTING IT EQUIPMENT FROM THIS OFFICE TO COPY/FAX ROOM 130. COORDINATE EXACT LOCATION WITH OWNER.
- REMOVE EXISTING COUNTERTOP. ALL CABINETRY SHALL REMAIN IN PLACE.

TYPE MARK	DESCRIPTION	MANUFACTURER	MODEL
DCS	SURFACE MOUNTED DIAPER CHANGING STATION	BRADLEY CORPORATION	962-11
FMG	24" X 36" FRAMELESS FROSTED GLASS MIRROR	BRADLEY CORPORATION	747F
GB1	3 STAINLESS STEEL GRAB BARS WITH CONCEALED MOUNTING - 42" SIDE, 36" BACK, HORIZONTAL ORIENTATION - 18" SIDE, VERTICAL ORIENTATION	BRADLEY CORPORATION	812 SERIES
MG	24" X 36" LIGHTED MIRROR - COORDINATE WITH ELECTRICAL DWGS.	BOBRICK	B-167 2436
RPTD	RECESSED PAPER TOWEL DISPENSER WITH WASTE RECEPTACLE	BRADLEY CORPORATION	235-000000
SND	SANITARY NAPKIN DISPOSAL - SURFACE MOUNTED	BRADLEY CORPORATION	4737-11
SPTD	SURFACE MOUNTED PAPER TOWEL DISPENSER WITH WASTE RECEPTACLE	BRADLEY CORPORATION	238-11
TPD	TOILET PAPER DISPENSER - TWO ROLL SIDE BY SIDE WITH SHELF	BRADLEY CORPORATION	5283

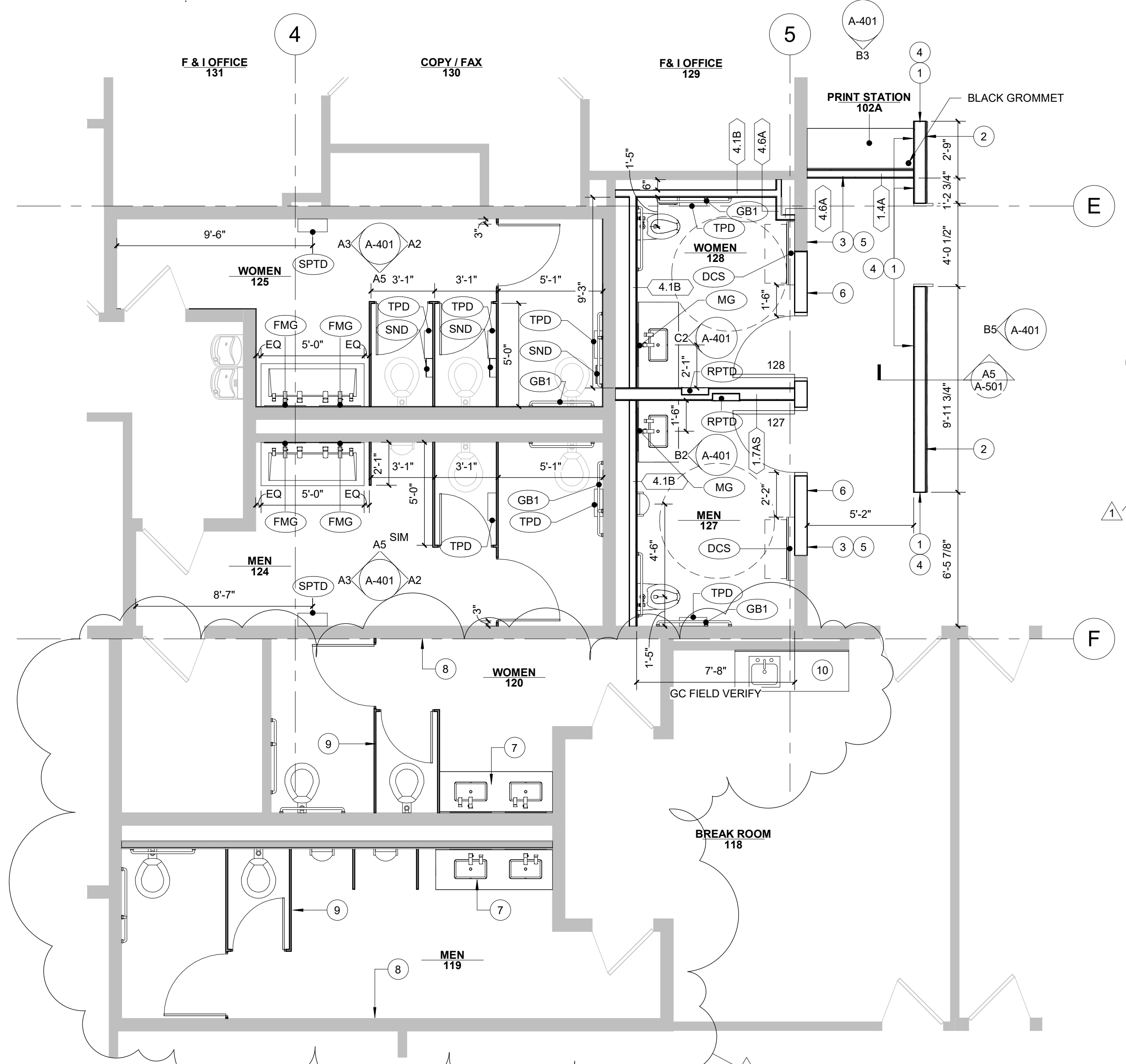


TOILET FIXTURE AND ACCESSORY LOCATIONS

SCALE: 1/4" = 1'-0"

C5 ENLARGED DEMOLITION PLAN

SCALE: 1/4" = 1'-0"



A5 ENLARGED RESTROOM PLAN

SCALE: 1/4" = 1'-0"



NEW WORK KEYNOTES

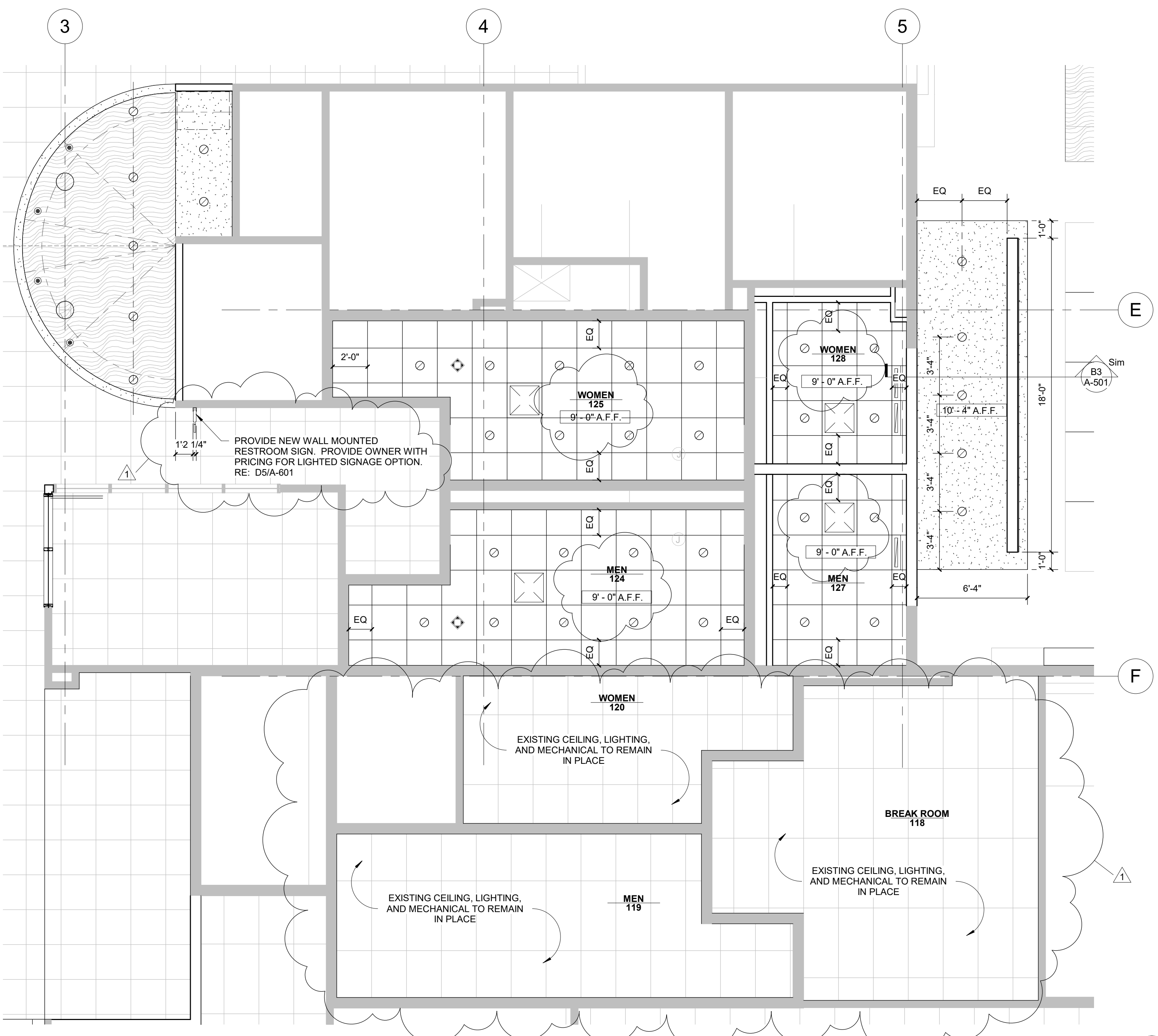
- INSTALL FLUSH METAL BASE MB-2.
- INSTALL RECESSED METAL BASE MB-1.
- INSTALL RUBBER BASE RB-1.
- PAINT ENDS OF FEATURE WALL P-4.
- PAINT WALLS TO MATCH EXISTING P-2. PAINT DOOR FRAMES TO MATCH EXISTING P-3.
- INSTALL NEW ADA COMPLIANT RESTROOM IDENTIFICATION SIGN. MATCH EXISTING SIGNAGE STANDARD.
- INSTALL NEW COUNTERTOP, SINKS, FAUCETS, AND SOAP DISPENSER IN SAME STYLE AS MEN'S 127 AND WOMEN'S 128. COUNTERTOP SHALL BE SOLID SURFACE (SS-1) IN EMPLOYEE RESTROOMS IN LIEU OF QUARTZ.
- REPAINT ALL WALLS IN EMPLOYEE RESTROOMS.
- INSTALL NEW TOILET PARTITIONS IN EMPLOYEE RESTROOMS. REUSE EXISTING WASHROOM ACCESSORIES IN EMPLOYEE RESTROOMS.
- INSTALL NEW SOLID SURFACE COUNTERTOP AND STAINLESS STEEL UNDERMOUNT SINK WITH FAUCET. EXISTING CABINETRY SHALL REMAIN IN PLACE.

CEILING LEGEND

- 24"X24" ACOUSTICAL LAY-IN PANELS & SUSPENDED CEILING SYSTEM
- 5/8" GYPSUM BOARD ON METAL STUDS @ 16" O.C. RE: FINISH SCHEDULE FOR PAINT REQUIREMENTS.
- RECESSED CAN LIGHT
- SMOKE DETECTOR
- RETURN AIR GRILLE
- SUPPLY AIR GRILLE
- EXHAUST AIR GRILLE RETURN
- EXHAUST FAN

A3 REFLECTED CEILING PLAN

SCALE: 1/4" = 1'-0"



0 2' 4' 8'
SCALE: 1/4" = 1'



FILE PATH: B:\01\2020\Adams Toyota Restroom\A2100-ADAMS_Toyota Restrooms.dwg
PLOT DATE: 10/10/22 2:59:27 PM

D
C
B
A

SHEET SIZE: ARCH E1 30" x 42"

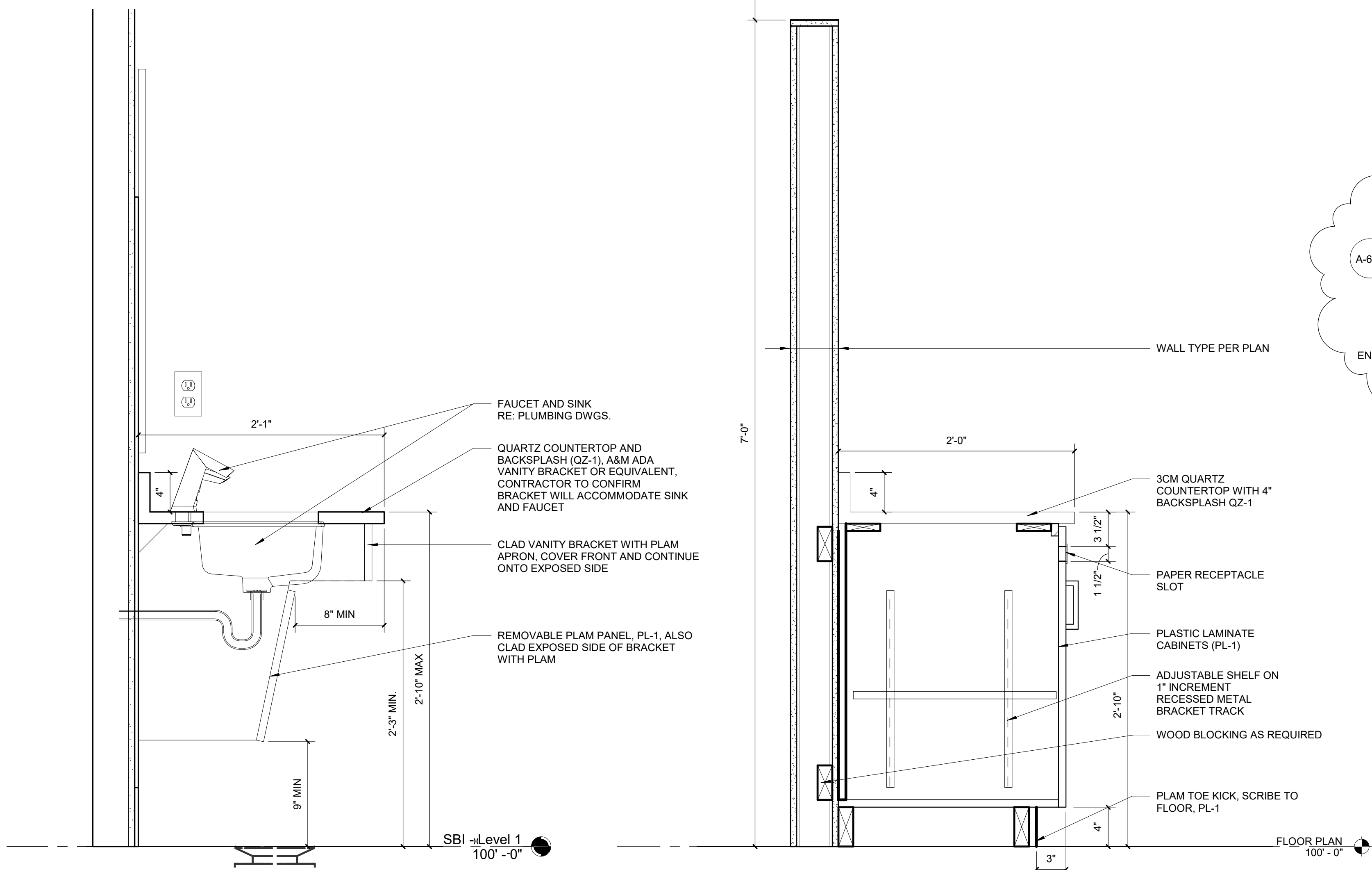
INTERIOR FINISH SCHEDULE									
ROOM NO	ROOM NAME	WALL FINISH				BASE FINISH	FLOOR MATERIAL	CEILING MATL	REMARKS
		NORTH	EAST	SOUTH	WEST				
102A	PRINT STATION	-	P-4	P-2	P-2	REFER TO PLAN	EXISTING CONCRETE	GYPSUM, PAINT P-1	PLAM MILLWORK (PL-1), QUARTZ COUNTERTOP (QZ-1)
118	BREAK ROOM	EXISTING	EXISTING	EXISTING	EXISTING	EXISTING	EXISTING CONCRETE	EXISTING	SS-1 COUNTERTOP
119	MEN	P-2	P-2	P-2	P-2	TB-1	PFT-1	EXISTING	SS-1 COUNTERTOPS, TP-1 TOILET PARTITIONS
120	WOMEN	P-2	P-2	P-2	P-2	TB-1	PFT-1	EXISTING	SS-1 COUNTERTOPS, TP-1 TOILET PARTITIONS
124	MEN	CWT-2, WC-2	CWT-2, WC-2	WC-2	WC-2	TB-1	PFT-1	ACT-1	SS-1 COUNTERTOPS, TP-1 TOILET PARTITIONS
125	WOMEN	WC-2	CWT-2, WC-2	CWT-2, WC-2	WC-2	TB-1	PFT-1	ACT-1	SS-1 COUNTERTOPS, TP-1 TOILET PARTITIONS
127	MEN	CWT-1, WC-1	CWT-1, WC-1	CWT-1, WC-1	CWT-1, WC-1	TB-1	PFT-1	ACT-1	QZ-1 COUNTERTOP, PL-1 APRON, TILE TO APPROX. 5'-6" AFF
128	WOMEN	CWT-1, WC-1	CWT-1, WC-1	CWT-1, WC-1	CWT-1, WC-1	TB-1	PFT-1	ACT-1	QZ-1 COUNTERTOP, PL-1 APRON, TILE TO APPROX. 5'-6" AFF

INTERIOR FINISH LEGEND					
CODE	MANUFACTURER	ITEM NUMBER	COLOR	PRODUCT DESCRIPTION	COMMENTS
1 FLOORING					
PFT-1	VIRGINIA TILE	ANATOLIA STATION	SHADOW	32" X 32" PORCELAIN TILE	RESTROOMS, USE GROUT GR-1
2 BASE					
MB-1	FRY REGLET	MWRB75400	CLEAR ANODIZED ALUMINUM	RECESSED BASE ON FEATURE WALL	SHOWROOM SIDE FACE ONLY, UNDER MILLWORK PANELS
MB-2	FRY REGLET	DRMBFL625400	CLEAR ANODIZED ALUMINUM	FLUSH METAL BASE	METAL BASE FOR OTHER 3 FACES OF FEATURE WALL
RB-1	MATCH EXISTING	MATCH EXISTING	MATCH EXISTING	RUBBER BASE - MATCH EXISTING SHOWROOM WALL BASE	
TB-1	VIRGINIA TILE	ANATOLIA STATION	SHADOW	12" X 6" BASE, CUT FROM 12" X 24" TILE	CAP WITH SCHLUTER QUADECT TRIM IN CLEAR ANODIZED ALUMINUM FINISH, USE GROUT GR-1
3 WALL TILE					
CWT-1	EMSER TILE	SPARKLE	WHITE LINEAR	12"X39" TEXTURED CERAMIC WALL TILE	SINGLE RESTROOMS, USE GROUT GR-3
CWT-2	MOSA	MURALS CHANGE	34510	12"X12" CERAMIC WALL TILE	MULTI-STALL RESTROOMS, USE GROUT GR-2
4 GROUT					
GR-1	MAPEI	KERAPOXY CQ	ANTHRACITE	EPOXY GROUT	GROUT FOR FLOOR TILE
GR-2	MAPEI	KERAPOXY CQ	AVALANCHE	EPOXY GROUT	GROUT FOR WALL TILE
GR-3	MAPEI	KERAPOXY CQ	WARM GRAY	EPOXY GROUT	GROUT FOR WALL TILE
5 QUARTZ					
QZ-1	CORIAN QUARTZ	3CM QUARTZ SLAB	CONCRETE CARRARA	3CM SLAB	EASE EDGES, TYPICAL
6 SOLID SURFACE					
SS-1	CORIAN SOLID SURFACE	SOLID SURFACE SHEET	EVEREST	1/2" THICK SOLID SURFACE COUNTERTOP	MULTI-STALL RESTROOM COUNTERTOPS
7 LAMINATE					
ML-1	FORMICA	DECOMETAL M5391	GRAPHITE VEIL	METAL LAMINATE	TYPICAL METAL LAMINATE ON SCREEN WALL
PL-1	WILSONART	7965K-12	WALNUT HEIGHTS	PLASTIC LAMINATE	TYPICAL PLASTIC LAMINATE
8 PAINT					
P-1	MDC	LIQUAPEARL	CUSTOM MATCH	METALLIC PAINT FINISH	MATCH TOYOTA RED, PMS186C, RGB 235 10 30, HEX E80A1E
P-2	SHERWIN WILLIAMS	EG-SHEL INTERIOR PAINT	ORIGAMI WHITE SW7636	EG-SHEL INTERIOR PAINT	CONFIRM MATCHES EXISTING
P-3	SHERWIN WILLIAMS	GLOSS INTERIOR PAINT	ORIGAMI WHITE SW7636	GLOSS TRIM PAINT	DOOR FRAMES, CONFIRM MATCHES EXISTING
P-4	SHERWIN WILLIAMS	EG-SHEL INTERIOR PAINT	IRON ORE SW7069	EG-SHEL INTERIOR PAINT	3 SIDES OF FEATURE WALL
9 WALL COVERING					
WC-1	MDC	JACOBI	VOLT EJA9207	TYPE II VINYL WALLCOVERING	SINGLE RESTROOMS ABOVE TILE
WC-2	KOROSEAL	HEXAGON GRID	ARTEMIS 7422-91	TYPE II VINYL WALLCOVERING	MULTI-STALL RESTROOMS ABOVE TILE
WC-3	WOLF GORDON	OSMOSIS	BORDEAUX GOH32526980	TYPE II VINYL WALLCOVERING	BEHIND DRINKING FOUNTAINS
10 CEILING					
ACT-1	ARMSTRONG	ULTIMA 1951	WHITE	24" X 24" BEVELED REGULAR CEILING PANELS WITH 15/16" SUSPENSION SYSTEM	RESTROOMS
11 TOILET PARTITIONS					
TP-1	GENERAL PARTITIONS	SERIES 40 FLOOR SUPPORTED HEADRAIL	WILSONART WALNUT HEIGHTS 7965-60 (MATTE)	OVERHEAD BRACED TOILET PARTITIONS	MULTI-STALL RESTROOMS

- FINISH NOTES:
1. INSTALL ALL FINISHES ACCORDING TO MANUFACTURER'S WRITTEN INSTALLATION INSTRUCTIONS.
 2. BUILT-IN MILLWORK SHALL BE AWI CUSTOM GRADE.
 3. CABINET HINGES SHALL BE EURO-STYLE CONCEALED STYLE. CABINET PULLS SHALL BE APPROXIMATELY 5", BAR PULL STYLE, IN STAINLESS STEEL FINISH.

D5 RESTROOM SIGNAGE ELEVATION

SCALE 1" = 1'-0"

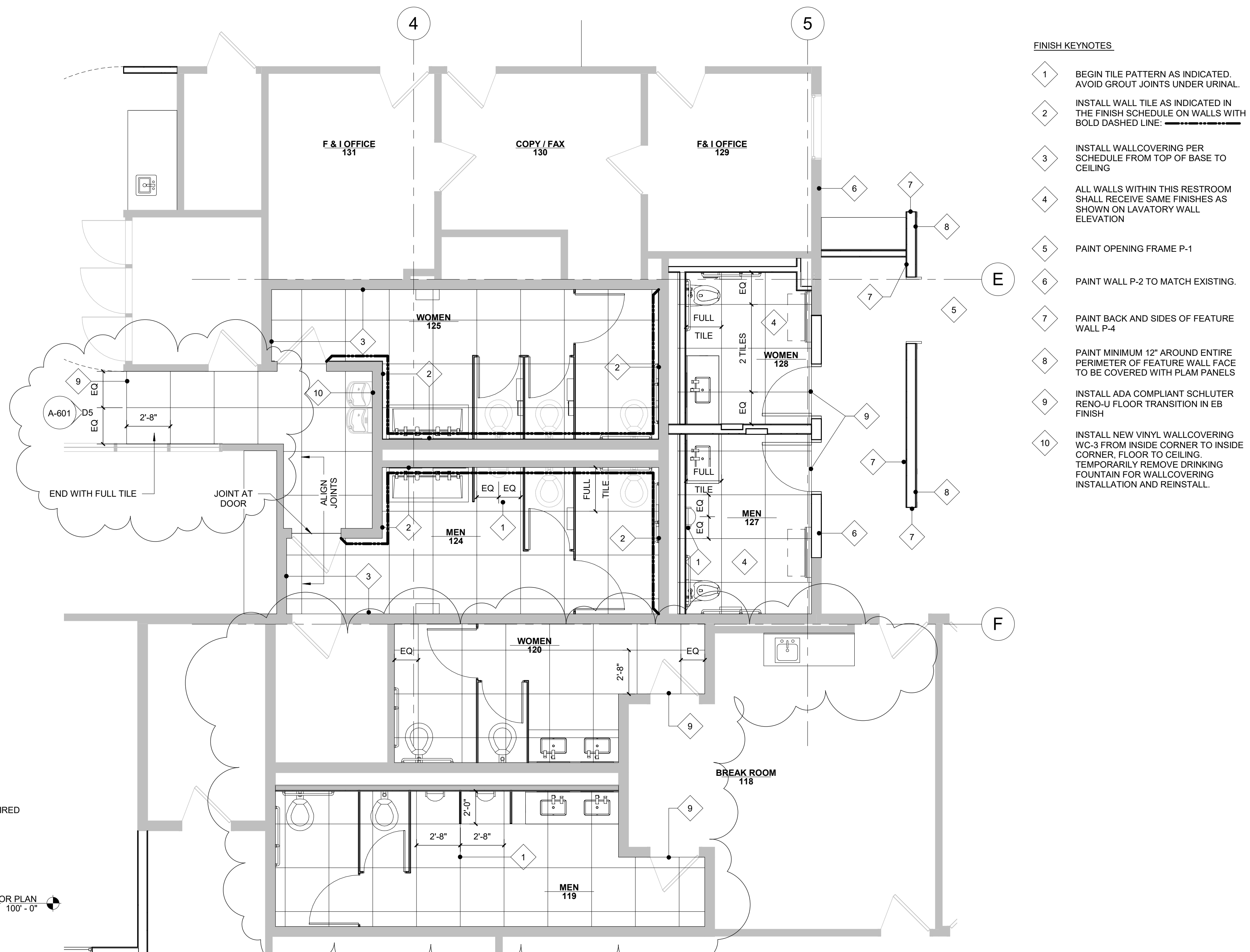


A5 VANITY SECTION

SCALE 1 1/2" = 1'-0"

A4 CABINET SECTION

SCALE 1 1/2" = 1'-0"



A2 ENLARGED TILE LAYOUT PLAN

SCALE 1/4" = 1'-0"

FINISH KEYNOTES

1. BEGIN TILE PATTERN AS INDICATED. AVOID GROUT JOINTS UNDER URINAL.
2. INSTALL WALL TILE AS INDICATED IN THE FINISH SCHEDULE ON WALLS WITH BOLD DASHED LINE.
3. INSTALL WALLCOVERING PER SCHEDULE FROM TOP OF BASE TO CEILING.
4. ALL WALLS WITHIN THIS RESTROOM SHALL RECEIVE SAME FINISHES AS SHOWN ON LAVATORY WALL ELEVATION.
5. PAINT OPENING FRAME P-1.
6. PAINT WALL P-2 TO MATCH EXISTING.
7. PAINT BACK AND SIDES OF FEATURE WALL P-4.
8. PAINT MINIMUM 12" AROUND ENTIRE PERIMETER OF FEATURE WALL FACE TO BE COVERED WITH PLAM PANELS.
9. INSTALL ADA COMPLIANT SCHLUTER RENO-U FLOOR TRANSITION IN EB FINISH.
10. INSTALL NEW VINYL WALLCOVERING WC-3 FROM INSIDE CORNER TO INSIDE CORNER, FLOOR TO CEILING. TEMPORARILY REMOVE DRINKING FOUNTAIN FOR WALLCOVERING INSTALLATION AND REINSTALL.



ARCHITECT
YAEGER ARCHITECTURE, INC.
8655 Penrose Lane, Suite 300
Lenexa, KS 66219
Tel: (913) 742-8000
Fax: (913) 742-8070
yaegearchitecture.com
Missouri certificate of authority no: 000270

MEP ENGINEER
Smith & Boucher, Inc.
25618 W. 103rd Street
Olathe, KS 66061
Tel: (913) 345-2127

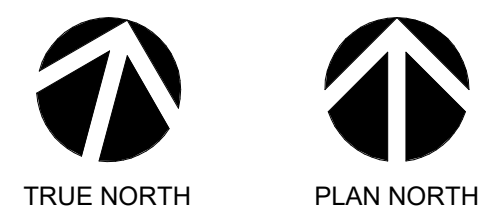
ADAMS TOYOTA RESTROOM RENOVATION
501 NE COLBERN ROAD
LEE'S SUMMIT, MO 64086

PROJECT NO:	A21093
DATE:	07/12/2022
DRAWN BY:	JG/JW
CHECKED BY:	PL
CHECKED BY:	PL
REVISED DATE	DESCRIPTION
10-10-22	[PR#1]

INTERIOR DETAILS,
FINISH SCHEDULE
AND LEGEND

A-601

© YAEGER ARCHITECTURE, INC.



PROJECT NAME: Adams Toyota - Lees Summit, Mo. PROJECT NO: A21093
LOCATION: 501 NE COLBERN ROAD DATE: 07/12/2022
LAST CORRECTION BY: PRASANTA PATRA Monday, October 10, 2022 1:06:46 PM
DRAWN BY: SBI
CHECKED BY: CEA
PLOTTED BY: DATE: TIME: Monday, October 10, 2022 2:05:17 PM

PLUMBING FIXTURE SCHEDULE									
MARK	MANUFACTURER/ MODEL	DESCRIPTION	MANUFACTURER/ MODEL	DESCRIPTION	NOTES	CW	HW	SAN	VENT
WC-1	AMERICAN STANARD AFWALL	ADA WATER CLOSET: WALL HUNG, WHITE VITREOUS CHINA, REAR DISCHARGE, PRESSURE ASSISTED FLUSH TANK, WATER CLOSET WITH CHROME FINISHED HANDLE AND FULLY GLAZED TRAP. 1.6GPF. FURNISH AND INSTALL WITH MATCHING SEAT LESS COVER.	SLOAN ROYAL 111-1.28	ADA COMPLIANT EXPOSED, TOP SPUD, MANUAL, WATER CLOSET FLUSHOMETER WITH METAL NON-HOLD-OPEN OSCILLATING HANDLE AND ADJUSTABLE TAILPIECE. 1.28 GPF	5	1"	---	4"	2"
UR-1	KOHLER BARDON K-4991-ET	ADA COMPLIANT URINAL: WHITE VITREOUS CHINA WALL HUNG URINAL WITH 3/4" TOP SPUD, 0.5 GALLON SIPHON JET FLUSHING ACTION.	SLOAN ROYAL 186-0.5	PROVIDE WALL AND SPUD FLANGES EXPOSED, MANUAL, 3/4" TOP SPUD, URINAL FLUSHOMETER WITH METAL NON-HOLD-OPEN OSCILLATING HANDLE AND ADJUSTABLE TAILPIECE, 0.5 GPF.	5	3/4"	---	2"	1-1/2"
L-1	WADE SLOAN AD-82000	ADA COMPLIANT LAVATORY: TWO STATION CORIAN SOLID SURFACE COUNTER TOP, STAND ALONE SINK SYSTEM, RECTANGULAR BASIN WITH OVERFLOW DRAIN, 80"x23-1/2"x6" OVERALL DIMENSIONS. PROVIDE WITH ANGLES STAINLESS STEEL ENCLOSURE, STRAINER AND CHROME PLATED TAIL PIECE.	SLOAN EPX-250 ESD-500 EHD-510 LEONARD LF-170	LAVATORY FACUET: ADA COMPLIANT, BATTERY POWERED, CENTER SET, POLISHED FINISH, FAUCET, 0.5 GPM. LAVATORY SOAP DISPENSER: BATTERY POWERED, CENTER SET, POLISHED CHROME FINISH LAVATORY DRYER: BATTERY POWERED, CENTER SET, POLISHED CHROME FINISH ASSE 1070 COMPLIANT POINT OF USE MIXING VALVE. INSTALL ABOVE CEILING.	1,2,3,4, 5,6,7	1/2"	1/2"	1-1/2"	1-1/2"
L-2	KOHLER VERTICYL RECTANGLE	ADA COMPLIANT LAVATORY: WHITE, VITREOUS CHINA, UNDERMOUNT, RECTANGULAR BASIN WITH OVERFLOW DRAIN, 19-13/16"x15-5/8"x6-3/4" OVERALL DIMENSIONS. PROVIDE WITH STRAINER AND CHROME PLATED TAIL PIECE.	SLOAN EPX-250 ESD-500 LEONARD LF-170	LAVATORY FACUET: ADA COMPLIANT, BATTERY POWERED, CENTER SET, POLISHED FINISH, FAUCET, 0.5 GPM. LAVATORY SOAP DISPENSER: BATTERY POWERED, CENTER SET, POLISHED CHROME FINISH ASSE 1070 COMPLIANT POINT OF USE MIXING VALVE. INSTALL ABOVE CEILING.	1,2,3,4,	1/2"	1/2"	1-1/2"	1-1/2"
S-1	KOHLER STACCATO	ADA COMPLIANT SINK: DROP-IN 18 GAUGE TYPE 304 STAINLESS STEEL, RECTANGULAR BASIN, 20" X 20" X 8" OVERALL DIMENSIONS. PROVIDE WITH DRAIN, LK36 BASKET STRAINER, AND CHROME PLATED TAIL PIECE.	AMERICAN STANDARD 6409.17	SINGLE LEVER HANDLE, 8" CENTER SET, CAST BRASS BODY, SWIVEL SPOUT, 1.5 GPM FLOW, CHROME FINISH.	1,2,3,4,	1/2"	1/2"	2"	1-1/2"

- NOTES:
- 1: PROVIDE CHROME PLATED BRASS TAILPIECE AND GRID DRAIN.
 - 2: PROVIDE CHROME PLATED BRASS P-TRAP.
 - 3: PROVIDE LOOSE KEY STOPS AND FLEXIBLE RISERS.
 - 4: INSULATE EXPOSED TAILPIECE, P-TRAP, AND WATER RISERS PER ADA REQUIREMENTS. REFER TO SPECIFICATIONS FOR INSULATION METHODS.
 - 5: PROVIDE CAULK AROUND FIXTURE CONNECTION TO FLOOR/WALL. COLOR BY ARCHITECT.
 - 6: QUANTITY OF FAUCET HOLES SHALL MATCH FAUCET TYPE.
 - 7: PROVIDE CONCEALED ARM TYPE CARRIER WITH SQUARE TUBULAR STEEL UP-RIGHTS AND BLOCK TYPE BASES.

PIPE INSULATION SCHEDULE - PLUMBING		
SERVICE	PIPE SIZE	INSULATION
DOMESTIC COLD WATER	1/2" - 2"	1/2" FIBERGLASS, ASJ OR 1/2" FLEXIBLE CLOSED CELL ELASTOMERIC
	2-1/2" AND LARGER	1" FIBERGLASS, ASJ OR 1" FLEXIBLE CLOSED CELL ELASTOMERIC
DOMESTIC HOT WATER		
RECIRCULATING HOT WATER	ALL	1" FIBERGLASS, ASJ, OR 1" FLEXIBLE CLOSED CELL ELASTOMERIC
TEMPERED WATER		
EXPOSED FIXTURE WASTETRAPS AND DOMESTIC HOT WATER AT HANDICAPPED ACCESSIBLE SINKS AND LAVATORIES	ALL	TRUBRO LAV AGUARD MOLDED PROTECTIVE PIPE COVER OVER 1/2" FIBERGLASS INSULATION

- NOTES:
- 1: FOR ALL PIPING 2-1/2" AND LARGER, PROVIDE RIGID FOAM INSERTS AT ALL HANGERS AND SUPPORT LOCATIONS.

DRAIN SCHEDULE			
MARK	MANUFACTURER	MODEL	DESCRIPTION
FD-1	WADE	1100-TSD-A6	CAST IRON DRAIN WITH ADJUSTABLE TOP AND 6" NICKEL BRASS STRAINER WITH VANDAL RESISTANT SCREWS. PROVIDE WITH GREEN DRAIN TRAP GUARD OR EQUAL.

- NOTES:
- 1: REFER TO PLANS FOR OUTLET SIZES.

PLUMBING FIXTURE CONN. SCHEDULE					
FIXTURE	DESIG.	CW	HW	WASTE	VENT
LAVATORY	L-1	1/2"	1/2"	1-1/2"	1-1/2"
FLUSH VALVE WATER CLOSET	WC-1	1-1/4"	---	4"	2"
URINAL	UR-1	1"	---	2"	1-1/2"
SINK	S-1	1/2"	1/2"	1-1/2"	1-1/2"
JANITOR SINK	JS-1	1/2"	1/2"	3"	1-1/2"
ELECTRIC DRINKING FOUNTAIN	EDF-1	1/2"	---	1-1/2"	1-1/4"

- NOTES:
- 1: PIPE SIZES ARE MINIMUM. REFER TO RISER DIAGRAM.

FAN SCHEDULE	
DESIGNATION	EF-1
FAN TYPE	EXHAUST
SERVICE	RESTROOM
MANUFACTURER	BROAN - NUTONE
MODEL	HB80RL
UNIT DATA	CFM
	80
	STATIC PRESSURE
	0.1
	FAN DIAMETER
	--
	FAN RPM
	--
ELECTRICAL/CONTROL DATA	BRAKE HORSEPOWER
	--
	MOTOR HORSEPOWER
	--
	VOLTAGE/PHASE
	120V / 1PH
	DRIVE
	--
PANEL & CIRCUIT	L-2-80
	WIRE & CONDUIT
	(2) #12, (1) #12, IN 3/4"C.
	OVERCURRENT DEVICE
	20A/1P
	DISCONNECT
	--
STARTER	--
	COMBINATION STARTER
	--
	CONTROL
	--
	DAMPER TYPE
	--
DAMPER VOLTAGE	--
	--
REFERENCE DRAWING/DETAIL	--
REMARKS	1,2

- NOTES:
- 1: EXHAUST FAN WILL BE PROVIDED BY OWNER.
 - 2: CONNECT FAN INTO LIGHTING CIRCUIT.

LIGHT FIXTURE SCHEDULE						
TYPE	DESCRIPTION	MOUNTING	LAMP	VOLTS	MANUFACTURER	V-A
A AX	2" ROUND RECESSED DOWN LIGHT, MATTE DIFFUSE LENS, CLEAR SEMI-SPECULAR FINISH, MEDIUM DISTRIBUTION, TRM LOCK RETENTION SYSTEM. FLANGE TYPE AS REQUIRED FOR CEILING. MOUNTING HARDWARE WITH INTEGRAL 0-10V 10% DIMMABLE DRIVER. RATED FOR WET LOCATIONS (X) = PROVIDE WITH INTEGRAL EMERGENCY BATTERY PACK.	RECESSED	500 LUMENS 3000K LED	UNV	GOTHAM - EVO 2 OR APPROVED EQUAL.	18
B	24" DECORATIVE LINEAR VANITY FIXTURE WITH METAL HOUSING AND FROSTED ACRYLIC LENS, IN POLISHED CHROME. RATED FOR DAMP LOCATIONS.	SURFACE	1500 LUMENS 3000K LED	120	AFX - BARLOW BARV OR APPROVED EQUAL.	22

PANEL L-2 (SECTION 1) (EXISTING)						
MAIN BUS AMPS: 225 A		AIC: 10,000 A		EQUIPMENT GROUND BUS		
MAIN BREAKER: 200 A		SECTIONS: 1 - 42 SPACE				
VOLTAGE: 208Y/120 V		MOUNTING: RECESSED				
PHASES/WIRES: 3 PH / 4 W		ENCLOSURE TYPE: NEMA 1				
CIRCUIT DESCRIPTION	POLES	AMPS	CKT NO	CKT NO	AMPS	POLES
ENTRY	1	20	1	2	20	1
SALES TOWER	1	20	3	4	20	1
SALES TOWER	1	20	5	6	20	1
GM OFFICE	1	20	7	8	20	1
OFFICE AB	1	20	9	10	20	1
CASHIER	1	20	11	12	20	1
COPIER	1	20	13	14	20	1
EF #17	1	20	15	16	20	1
GEN. OFFICE	1	20	17	18	20	1
DISPOSAL	1	20	19	20	20	1
REFRIG	1	20	21	22	20	1
BRK ROOM	1	20	23	24	20	1
BRK ROOM	1	20	25	26	20	1
CONFERENCE	1	20	27	28	20	1
DEALER / CONF	1	20	29	30	20	1
DEALER / CONF	1	20	31	32	20	1
REFRIG	1	20	33	34	20	1
SF #1	1	20	35	36	20	1
DEALER #110	1	20	37	38	20	1
GEN. OFFICE	1	20	39	40	20	1
GEN. OFFICE	1	20	41	42	20	1
ASM	1	20				
EF #11	1	20				
EF #10	1	20				
SWITCHBOARD	1	20				
LOUNGE	1	20				
VENDING	1	20				
VENDING	1	20				
RESTRM / COPY	1	20				
EF #16	1	20				
COPIER	1	20				
COPY / STORAGE	1	20				
COPY / OFFICE	1	20				
RENTAL	1	20				
CUST. CONFR.	1	20				
CLERK / SERVICE	1	20				
LOUNGE	1	20				
ASM OFFICE	1	20				
P. FAN SALES	1	20				
LTG 104	1	20				
LTG 110	1	20				

PANEL L-2 (SECTION 2) (EXISTING)						
MAIN BUS AMPS: 225 A		AIC: 10,000 A		EQUIPMENT GROUND BUS		
MAIN BREAKER: 200 A		SECTIONS: ALL SPACE				
VOLTAGE: 208Y/120 V		MOUNTING: RECESSED				
PHASES/WIRES: 3 PH / 4 W		ENCLOSURE TYPE: NEMA 1				
CIRCUIT DESCRIPTION	POLES	AMPS	CKT NO	CKT NO	AMPS	POLES
RSTRM / BRK	1	20	43	44	20	1
EF #1	1	20	45	46	20	1
OH DOOR	1	20	47	48	20	1
OH DOOR	1	20	49	50	20	1
OH DOOR	1	20	51	52	20	1
P FAN ASM	1	20	53	54	20	1
LTG 117	1	20	55	56	20	1
NORTH SIGN	1	20	57	58	20	1
NORTH SIGN	1	20	59	60	20	1
NORTH SIGN	1	20	61	62	20	1
NORTH SIGN	1	20	63	64	20	1
NORTH SIGN	1	20	65	66	20	1
PRKG LOT	1	20	67	68	20	1
PRKG LOT	1	20	69	70	20	1
PRKG SIGN	1	20	71	72	25	2
PRKG SIGN	1	20	73	74		
PRKG SIGN	1	20	75	76	20	1
SPARE	1	20	77	78	20	1
PARKING	1	20	79	80	20	1
PARKING	1	20	81	82	20	1
SALES TOWER	1	20	83	84	20	1
RECEP. SALES	1	20				
OH DOOR	1	20				
FACP	1	20				
COMPUTER	1	20				
COMPUTER	1	20				
COMPUTER	1	20				
COMPUTER	1	20				
ASM SIGNAGE	1	20				
ASM SIGNAGE	1	20				
SOUTH SIGN	1	20				
SOUTH SIGN	1	20				
RECEP. RTU	1	20				
EF #18	1	20				
CJ-1	2	25				
ASM RECEP.	1	20				
ASM RECEP.	1	20				
RESTROOM LTG / EF	1	20				
SPARE	1	20				
SPARE	1	20				



ARCHITECT

YAEGER ARCHITECTURE, INC.
8655 Penrose Lane, Suite 300
Lenexa, KS 66219
Tel: (913) 742-8000
Fax: (913) 742-8570
yaegerarchitecture.com
Missouri certificate of authority no. 000270

MEP ENGINEER

Smith & Boucher, Inc.
25618 W. 103rd Street
Olathe, KS 66061
Tel: (913) 345-2127

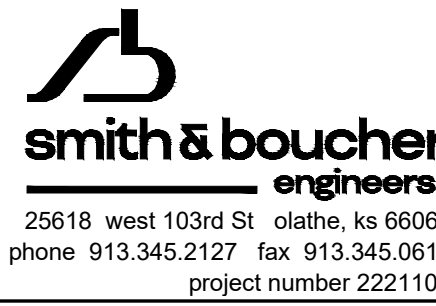
ADAMS TOYOTA RESTROOMS
501 NE COLBERN ROAD
LEE'S SUMMIT, MO 64086

PROJECT NO: A21093
DATE: 07/12/2022
DRAWN BY: SBI
CHECKED BY: CEA

REVISED DATE	DESCRIPTION
1 10/07/2022	PR-1

MECHANICAL AND
ELECTRICAL
SCHEDULES

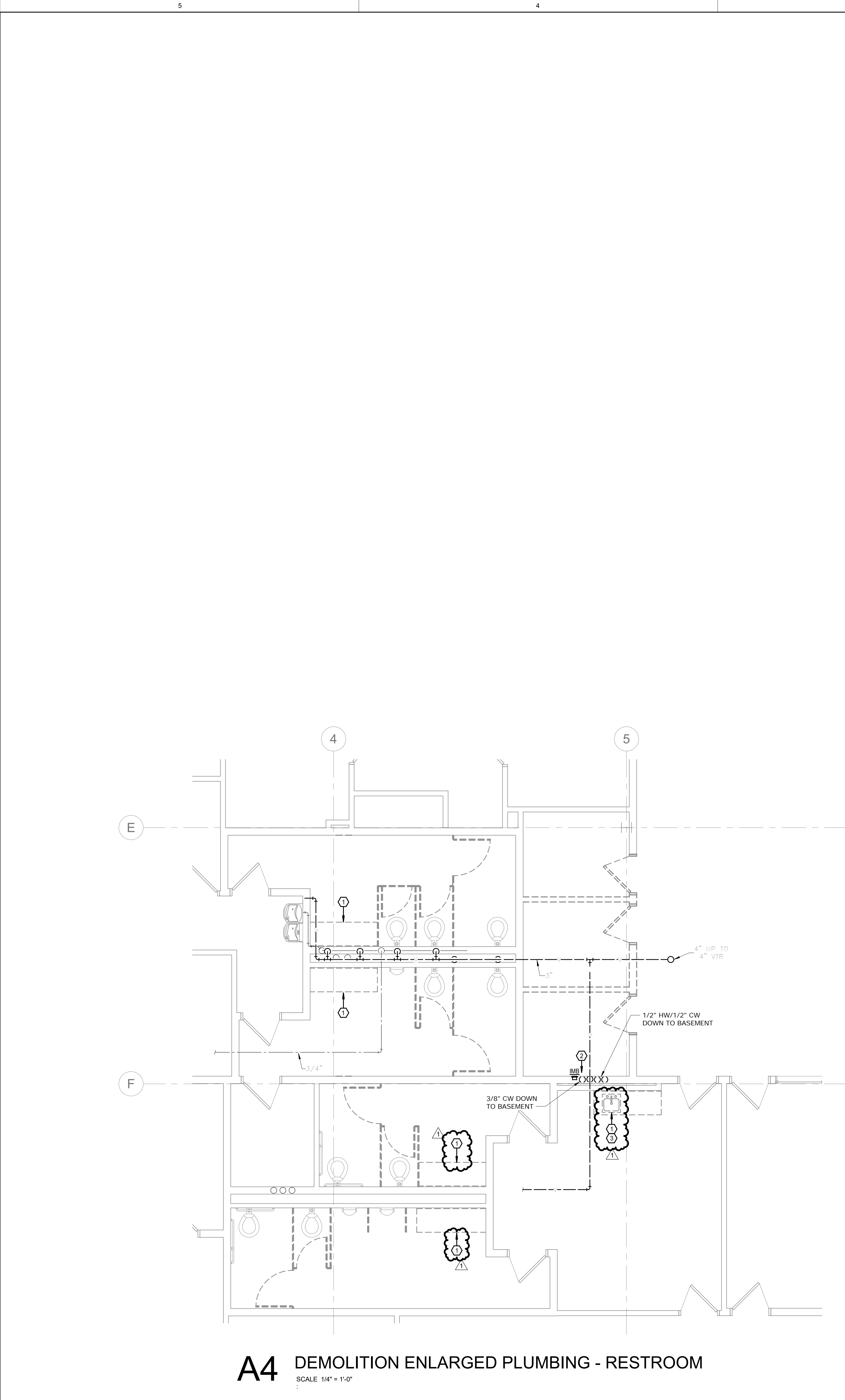
ME301



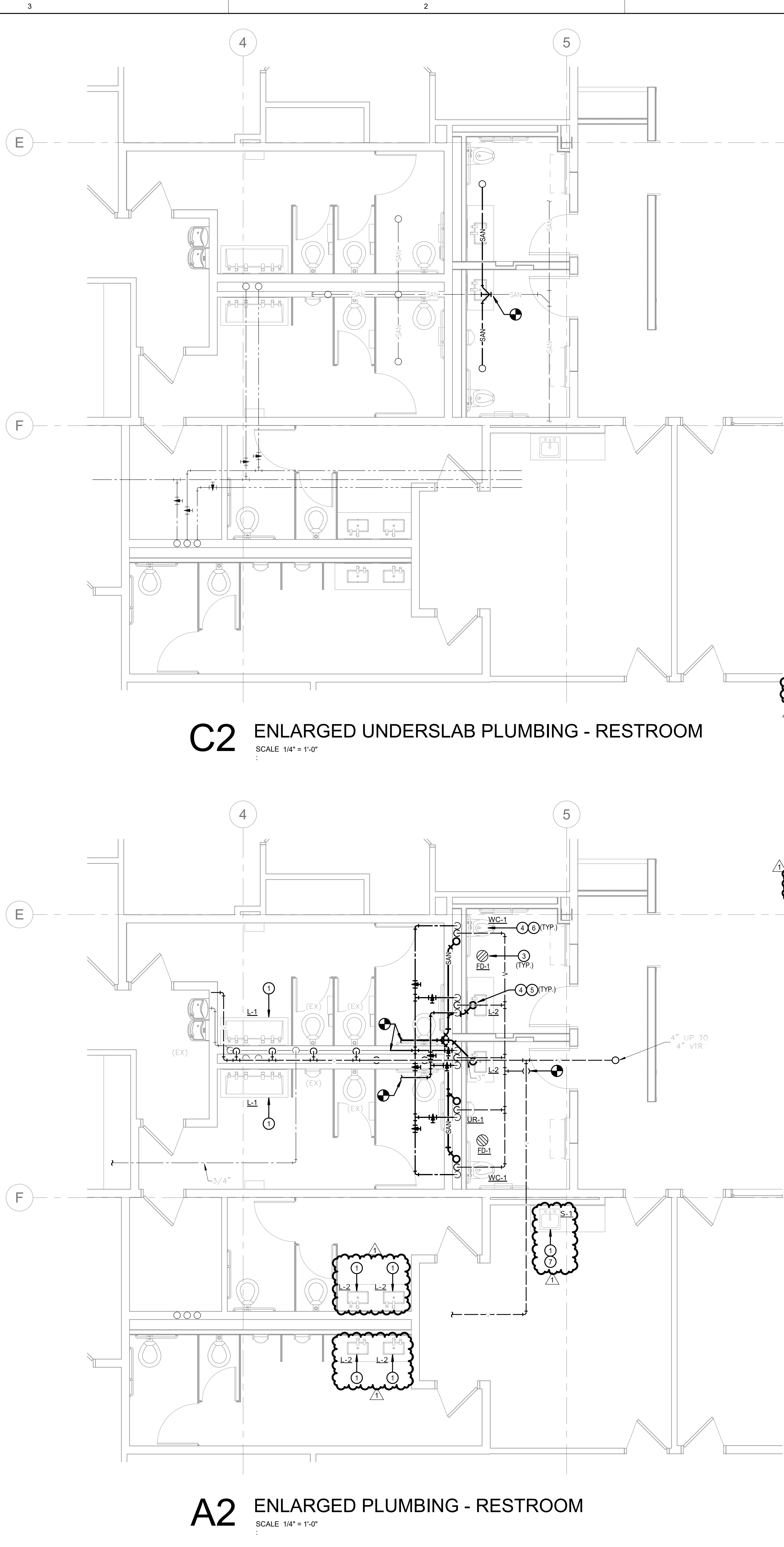
25618 west 103rd St olathe, ks 66061
phone 913.345.2127 fax 913.345.0617
project number 2221100

© YAEGER ARCHITECTURE, INC.

FILE PATH: B:\01\2100\Adams Toyota Restrooms\2100-ADAMS_Toyota_RESTROOMS_SB-MEP_P101.dwg
PLOT DATE: 10/07/2022 2:53:58 PM



A4 DEMOLITION ENLARGED PLUMBING - RESTROOM
SCALE 1/4" = 1'-0"



A2 ENLARGED PLUMBING - RESTROOM
SCALE 1/4" = 1'-0"

- GENERAL NOTES:**
1. INFORMATION SHOWN ON THE DRAWINGS IS INTENDED TO CONVEY SCOPE AND IS ARRANGED FOR DRAWING CLARITY. IT IS NOT TO BE TAKEN AS AN AS-BUILT CONDITION. THE SYSTEM INSTALLATION SHALL BE COORDINATED WITH STRUCTURE, CEILINGS, WALLS, AND ALL OTHER TRADES TO PROVIDE FOR A COMPLETE AND WORKING SYSTEM.
 2. CAREFULLY COORDINATE PIPE ROUTING WITH NEW AND EXISTING STRUCTURE AS WELL AS ALL OTHER TRADES TO MAINTAIN EQUIPMENT CLEARANCES AND DESIRED CEILING HEIGHTS.
 3. COORDINATE ALL PIPING PENETRATIONS WITH STRUCTURAL PRIOR TO CORE DRILLING.
 4. WASTE PIPING SHALL BE SLOPED AT 1/8" PER FOOT FOR 3" AND LARGER PIPING AND 1/4" PER FOOT FOR 2" AND SMALLER PIPING.
 5. STORM PIPING SHALL BE SLOPED AT 1/8" PER FOOT.
 6. PROVIDE WASTE AND STORM CLEANOUTS AS REQUIRED PER CODE AND SPECIFICATIONS. MORE CLEANOUTS MAY BE REQUIRED THAN AS SHOWN ON PLANS.
 7. PROVIDE SHUT OFF VALVES ABOVE ACCESSIBLE CEILING OR OTHER ACCESSIBLE LOCATION FOR ALL BRANCH PIPING AND INDIVIDUAL CONNECTIONS TO PLUMBING FIXTURES. WHERE STOPS ARE PROVIDED FOR INDIVIDUAL FIXTURES SHUT OFF VALVES ARE ALSO REQUIRED AT THE BRANCH CONNECTION. PLUMBING STOPS ARE NOT CONSIDERED A SUBSTITUTE FOR SHUT OFF VALVES.
 8. AVOID ROUTING ANY PIPING THROUGH IT ROOMS OR ELECTRIC ROOMS. IN THE EVENT IT IS ABSOLUTELY NECESSARY, COORDINATE THE EXACT LOCATION SUCH THAT IT IS NOT DIRECTLY ABOVE ANY PANELS OR EQUIPMENT.
 9. PROVIDE FIRESTOPPING AT PENETRATIONS OF ALL RATED WALLS. REFER TO CODE PLANS FOR LOCATIONS OF RATED WALLS.
 10. ALL HOT WATER RECIRC BALANCE DEVICES SHALL BE 1 GPM CIRCUIT SETTERS UNLESS OTHERWISE NOTED.
 11. PROVIDE WATER HAMMER ARRESTORS PER THE REQUIREMENTS OF THE SPECIFICATIONS AND PDI-WH201 FOR ALL FAST ACTING VALVES (FLUSH VALVES, SOLENOID FAUCETS, ETC)
 12. ALL SERVICES SHOWN WITH HALF TONE LINE WEIGHT ARE EXISTING.
 13. HATCHED AREAS DENOTE APPROXIMATE EXTENT OF SAW CUTTING FLOORS. EXACT NEEDS SHALL BE FIELD VERIFIED. PATCH SLAB AND RESTORE FINISH AT ALL LOCATIONS.
- DEMOLITION PLAN NOTES:**
1. REMOVE EXISTING PLUMBING FIXTURE IN ITS ENTIRETY. RETAIN EXISTING PIPING CONNECTIONS FOR RECONNECTION UNDER NEW WORK.
 2. REMOVE EXISTING PLUMBING FIXTURE IN ITS ENTIRETY INCLUDING ALL PIPING AND SUPPORTS BACK TO SOURCE OR NEAREST DEVICE SCHEDULED TO REMAIN.
 3. EXISTING GARBAGE DISPOSAL TO BE REMOVED AND RETAINED FOR REINSTALLATION UNDER NEW WORK.
- NEW WORK PLAN NOTES:**
1. PROVIDE PLUMBING FIXTURE IN APPROXIMATE LOCATION SHOWN. RECONNECT TO EXISTING PIPING RETAINED DURING DEMOLITION. MODIFY/EXTEND EXISTING PIPING AS NECESSARY FOR A COMPLETE INSTALLATION.
 2. 2" WASTE UP TO LAV.
 3. 2" WASTE UP TO FLOOR DRAIN.
 4. 4" WASTE UP TO WATER CLOSET.
 5. ROUTE 1/2" CW, 1/2" HW, AND 1-1/2" VENT DOWN TO LAVATORY/SINK.
 6. ROUTE 1-1/2" CW AND 2" VENT DOWN TO WATER CLOSET.
 7. REINSTALL EXISTING GARBAGE DISPOSAL WITH NEW SINK. COORDINATE ALL ELECTRICAL WORK WITH ELECTRICAL CONTRACTOR.

- C2 ENLARGED UNDERSLAB PLUMBING - RESTROOM**
SCALE 1/4" = 1'-0"

ADAMS TOYOTA RESTROOMS
501 NE COLBERN ROAD
LEE'S SUMMIT, MO 64086

PROJECT NO: A21093
DATE: 07/12/2022
DRAWN BY: SBI
CHECKED BY: CEA
CHECKED BY: Designer

REVISED DATE	DESCRIPTION
10/07/2022	PR-1

ENLARGED PLUMBING PLAN

P102

© YAEGER ARCHITECTURE, INC.

YAEGER ARCHITECTURE

STATE OF MISSOURI
CHRISTOPHER EDWARD ALBRIGHT
NUMBER PE-200524908
EXPIRATION DATE 12/31/22
1/12/22

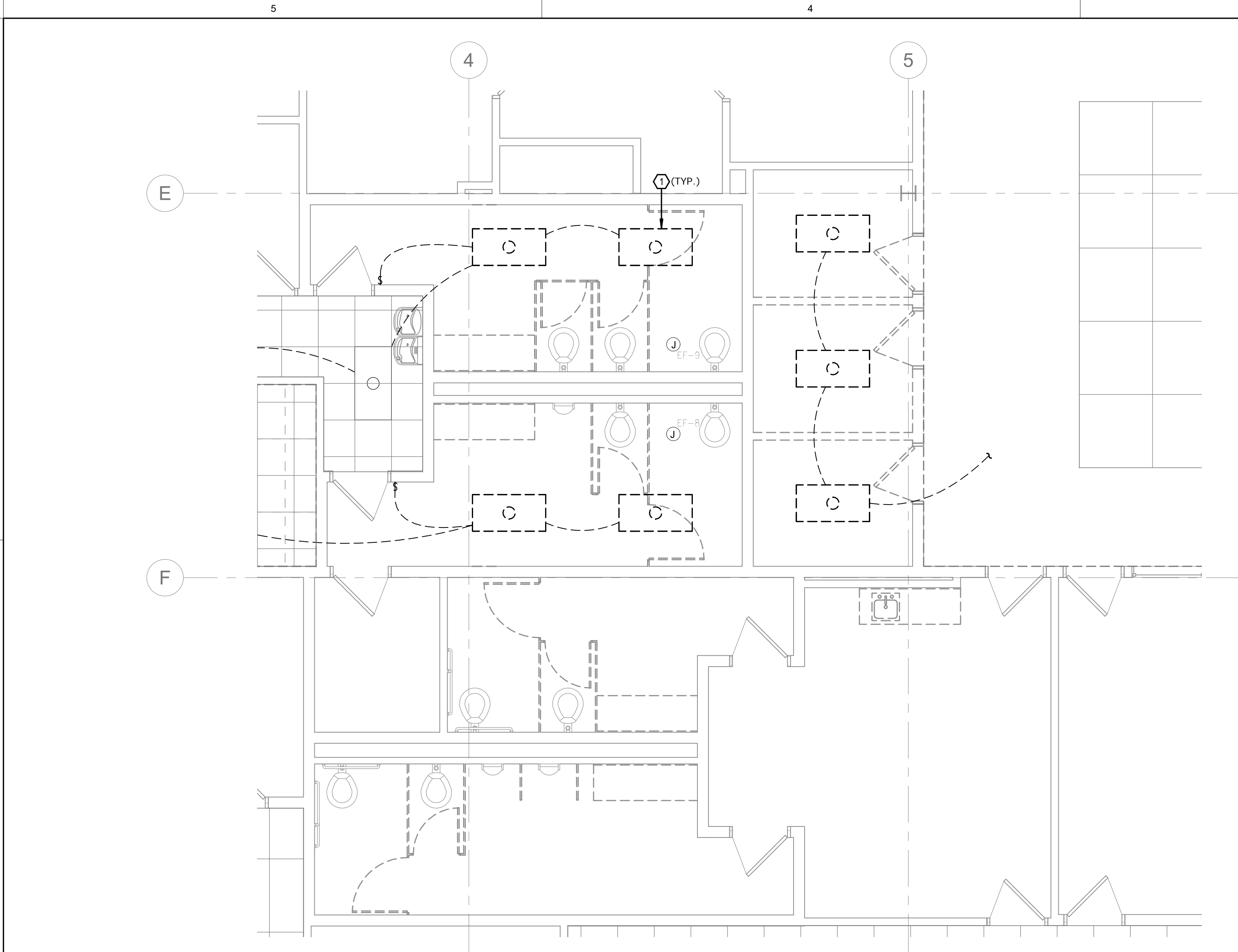
ARCHITECT
YAEGER ARCHITECTURE, INC.
8655 Penrose Lane, Suite 300
Lenexa, KS 66219
Tel: (913) 742-8000
Fax: (913) 742-8570
yaegearchitecture.com
missouri certificate of authority no: 000270

MEP ENGINEER
Smith & Boucher, Inc.
25618 W. 103rd Street
Olathe, KS 66061
Tel: (913) 345-2127

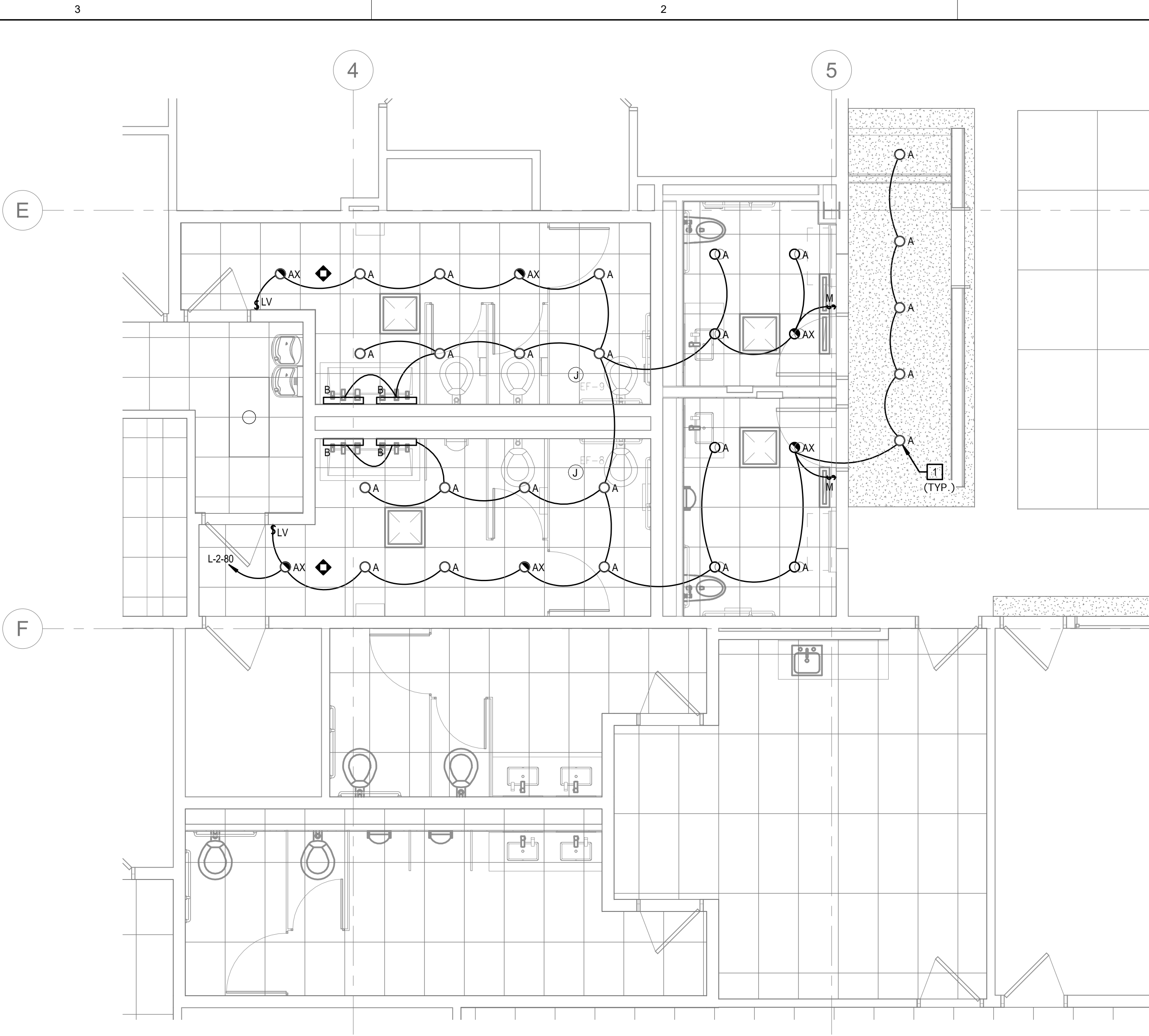
smith & boucher engineers
25618 west 103rd St. olathe, ks 66061
phone 913.345.2127 fax 913.345.0617
project number 2221100

PLAN NORTH

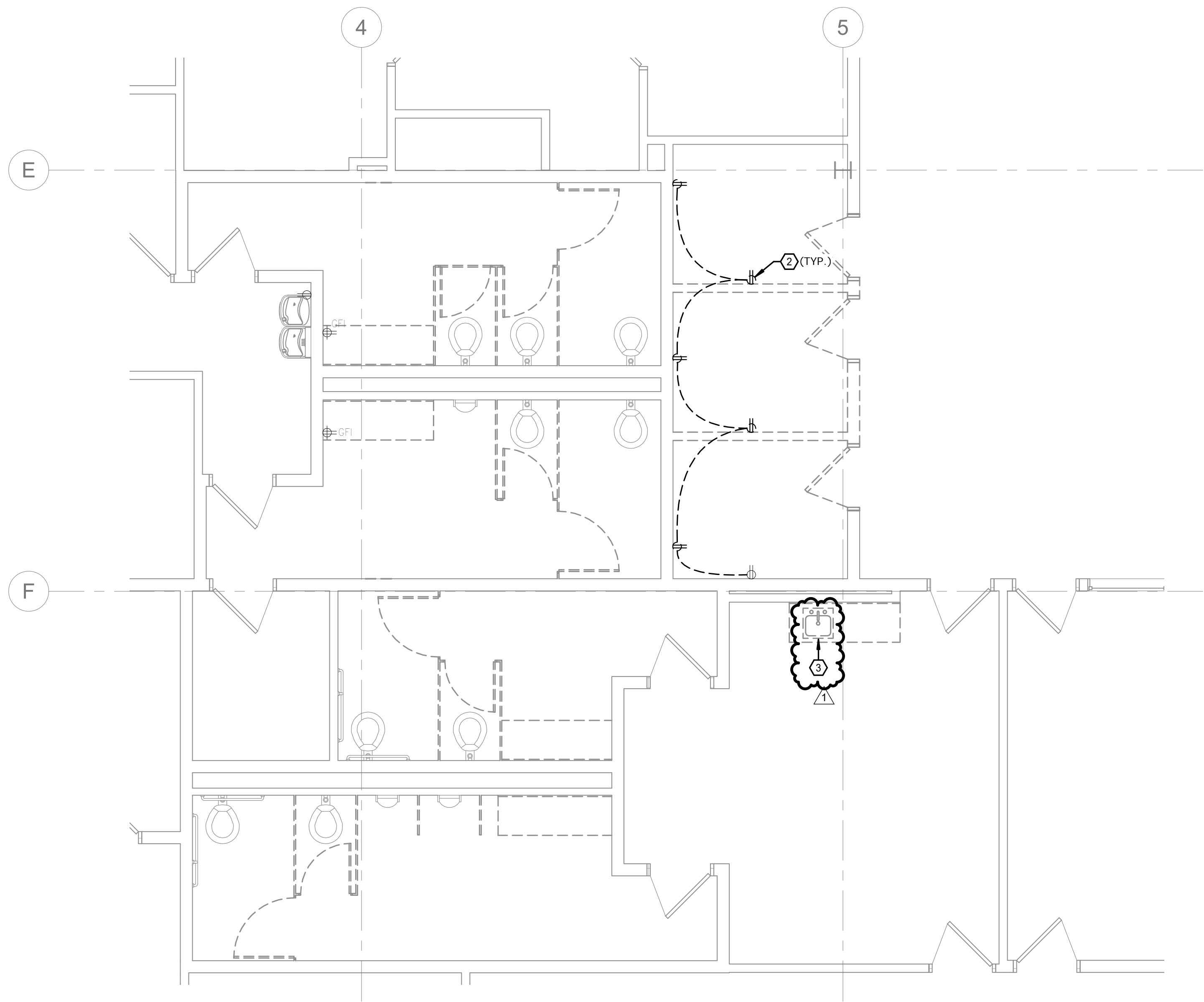
FILE PATH: B:\01\2103\Adams Toyota Restrooms\A2103-ADAMS TOYOTA RESTROOMS-31-BUMP-2.DWG
PLOT DATE: 10/07/2022 2:55:51 PM



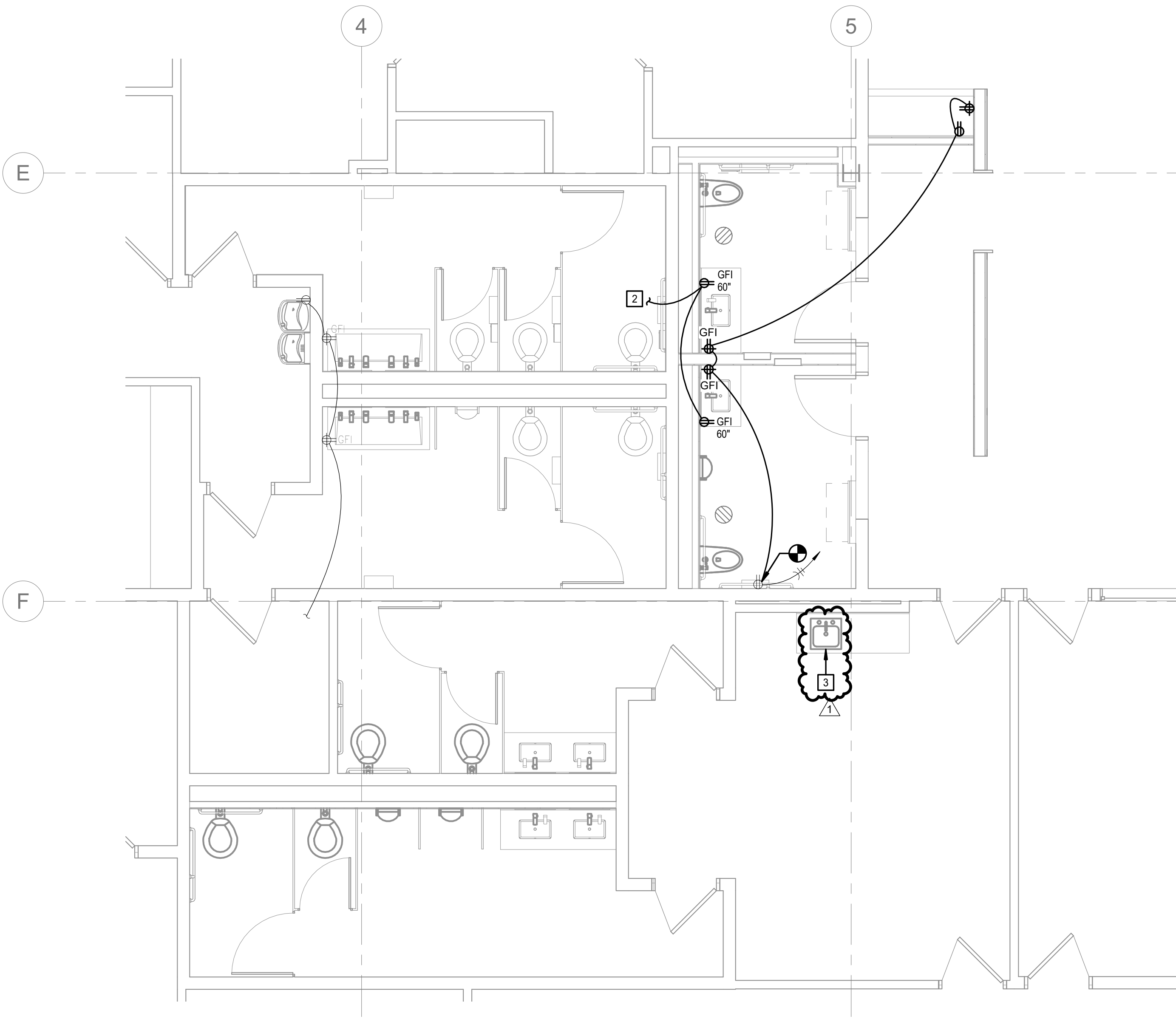
C4 DEMOLITION ENLARGED LIGHTING PLAN - RESTROOM
SCALE 1/4" = 1'-0"



C2 ENLARGED LIGHTING PLAN - RESTROOM
SCALE 1/4" = 1'-0"



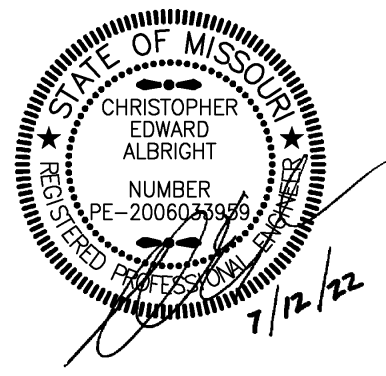
A4 DEMOLITION ENLARGED POWER PLAN - RESTROOM
SCALE 1/4" = 1'-0"



A2 ENLARGED POWER PLAN - RESTROOM
SCALE 1/4" = 1'-0"

- GENERAL NOTES:**
1. CIRCUIT ALL EMERGENCY BALLASTS AND EXIT SIGNS WITH AN UNSWITCHED HOT CONDUCTOR.
 2. PROVIDE LOW VOLTAGE WIRING BETWEEN OCCUPANCY SENSORS AND TO CORRESPONDING POWER PACKS WITHIN EACH ROOM UNLESS NOTED OTHERWISE. REFER TO WIRING DIAGRAMS ON SHEET E301 FOR MORE INFORMATION.
 3. REFER TO ARCHITECTURAL FLOOR PLANS AND REFLECTED CEILING PLANS FOR EXACT MOUNTING LOCATIONS OF ALL LIGHT FIXTURES AND WALL MOUNTED ELECTRICAL DEVICES.
 4. COORDINATE ALL LIGHT FIXTURES WITH MECHANICAL EQUIPMENT AND DUCTWORK PRIOR TO INSTALLATION.
 5. MAKE PROVISIONS FOR VOLTAGE DROP PER NEC AS REQUIRED FOR 120V BRANCH CIRCUITING.
- 0'-100' #12 AWG.
•101'-150' #10 AWG.
•151'-200' #8 AWG.
- GROUND CONDUCTOR AND RACEWAYS SHALL BE INCREASED AS REQUIRED.
6. ALL SERVICES SHOWN WITH HALF TONE LINE WEIGHT ARE EXISTING.
 7. FIRE ALARM SHALL MEET THE APPLICABLE CODE REQUIREMENTS OF NFPA 72, NFPA 90A AND NFPA 99 IN ADDITION TO LOCALLY ADOPTED CODES.
 8. SET CANDELA SETTINGS ON ALL STROBES PER THE REQUIREMENTS OF NFPA 72.

- DEMOLITION PLAN NOTES:**
1. REMOVE EXISTING LIGHT FIXTURE IN ITS ENTIRETY, INCLUDING ALL CONDUIT AND WIRING BACK TO SOURCE OR NEAREST DEVICE SCHEDULED TO REMAIN.
 2. REMOVE EXISTING ELECTRICAL DEVICE IN ITS ENTIRETY INCLUDING ALL CONDUIT AND WIRING BACK TO SOURCE OR NEAREST DEVICE SCHEDULED TO REMAIN.
 3. EXISTING GARBAGE DISPOSAL TO BE REMOVED AND RETAINED FOR REINSTALLATION UNDER NEW WORK. COORDINATE WORK WITH PLUMBING CONTRACTOR.
- PLAN NOTES:**
1. PROVIDE LIGHT FIXTURE IN APPROXIMATE LOCATION SHOWN. ROUTE NEW CIRCUITRY TO DESIGNATED PANELBOARD.
 2. PROVIDE RECEPTACLE IN APPROXIMATE LOCATION SHOWN FOR NEW LIGHTED MIRROR. CONNECT CIRCUITRY INTO AREA LIGHTING CIRCUITRY. COORDINATE FINAL MOUNTING HEIGHT WITH ARCHITECT.
 3. EXISTING GARBAGE DISPOSAL TO BE REINSTALLED WITH NEW SINK. MODIFY/EXTEND EXISTING CONDUIT AND WIRING AS NECESSARY FOR A COMPLETE INSTALLATION. COORDINATE WORK WITH PLUMBING CONTRACTOR.



ARCHITECT
YAEGER ARCHITECTURE, INC.
8655 Penrose Lane, Suite 300
Lenexa, KS 66219
Tel: (913) 742-8000
Fax: (913) 742-8570
yaegerarchitecture.com
missouri certificate of authority no: 000270

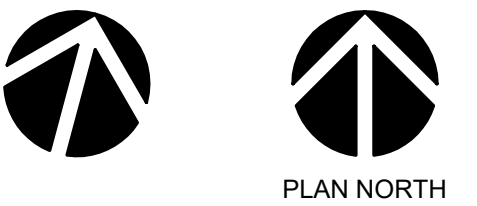
MEP ENGINEER

Smith & Boucher, Inc.
25618 W. 103rd Street
Olathe, KS 66061
Tel: (913) 345-2127

ADAMS TOYOTA RESTROOMS
501 NE COLBERN ROAD
LEE'S SUMMIT, MO 64086

PROJECT NO:	A21093
DATE:	07/12/2022
DRAWN BY:	SBI
CHECKED BY:	CEA
CHECKED BY:	Designer
REVISED DATE	DESCRIPTION
10/07/2022	PR-1

smith & boucher
engineers
25618 west 103rd St. olathe, ks 66061
phone 913.345.2127 fax 913.345.0617
project number 2221100



ENLARGED ELECTRICAL

E102

© YAEGER ARCHITECTURE, INC.