

HD Engineering & Design

Solutions for all your engineering and design needs

11/1/2022

SAB HOMES

**RE: SOLAIA (HF047)
2032 SW WHEATFIELD CT
LEES SUMMIT, MO.**

Our firm has been asked to evaluate the the sewer excavation at the front of the home at the location listed above.

OBSERVATIONS

- The sewer excavation was along the side of the front stoop and across the front of the stoop.
- The excavation was at a depth slightly greater than than the footing at the side of the stoop.
- The lower portion of the excavation was backfilled with gravel.

ASSESSMENT

The depth and extent of the excavation did not undermine the footing or reduce the footing ability to transfer load as intended.

This report has been prepared for the exclusive use of our client for specific application to the project discussed and has been prepared in accordance with generally accepted engineering practices. No warranties, either express or implied, are intended or made.

We appreciate the opportunity to be of service to you on this project. If you have any questions regarding this report, please contact us.

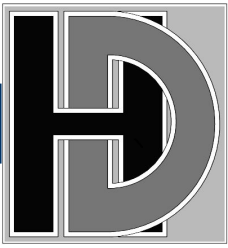
Very truly yours,
HD ENGINEERING & DESIGN, INC.

John Hulse, Principal



THIS DOCUMENT CONTAINS
COPYRIGHTED MATERIAL AND
CONFIDENTIAL INFORMATION
BELONGING TO HD ENGINEERING.
UNAUTHORIZED USE, DISCLOSURE,
DISSEMINATION, OR DUPLICATION OF
ANY OF THE INFORMATION
CONTAINED HEREIN MAY RESULT IN
LIABILITY UNDER APPLICABLE LAW.

STRUCTURAL REVIEW
HD ENGINEERING & DESIGN
HD: 43055 DATE: 11/1/2022



HD Engineering & Design

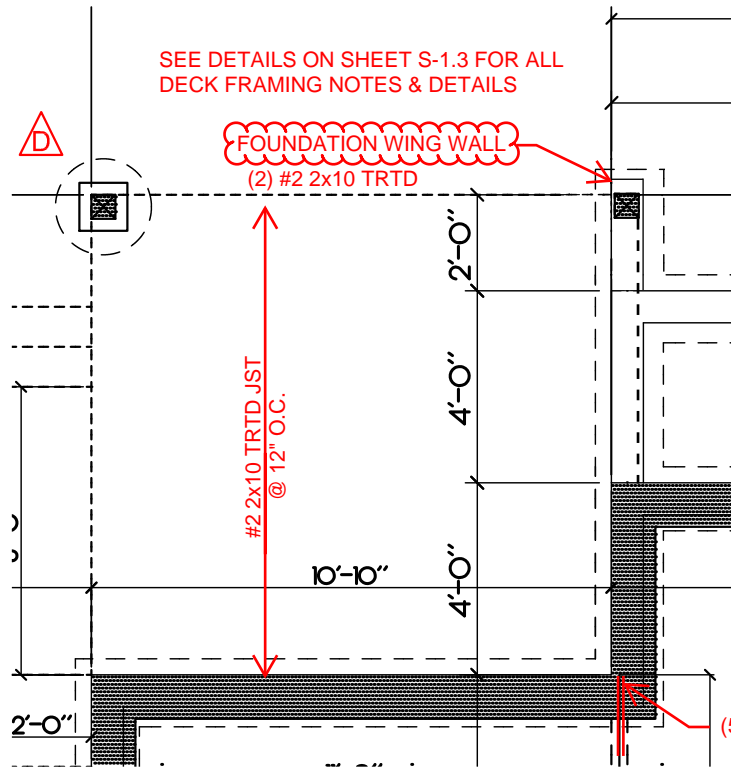
Solutions for all your engineering and design needs

STRUCTURAL ADDENDUM

11/1/2022

SAB HOMES

RE: SOLAIA (HF047)
2032 SW WHEATFIELD CT
LEES SUMMIT, MO.



ALTERNATE POST BEARING AT REAR DECK



THIS DOCUMENT CONTAINS
COPYRIGHTED MATERIAL AND
CONFIDENTIAL INFORMATION
BELONGING TO HD ENGINEERING.
UNAUTHORIZED USE, DISCLOSURE,
DISSEMINATION, OR DUPLICATION OF
ANY OF THE INFORMATION
CONTAINED HEREIN MAY RESULT IN
LIABILITY UNDER APPLICABLE LAW.

STRUCTURAL REVIEW
HD ENGINEERING & DESIGN
HD: 43055 DATE: 11/1/2022