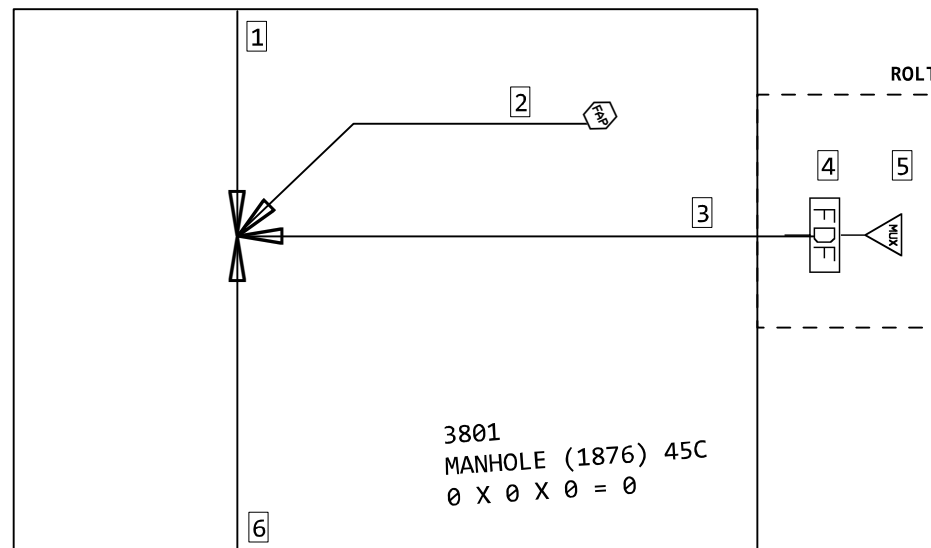
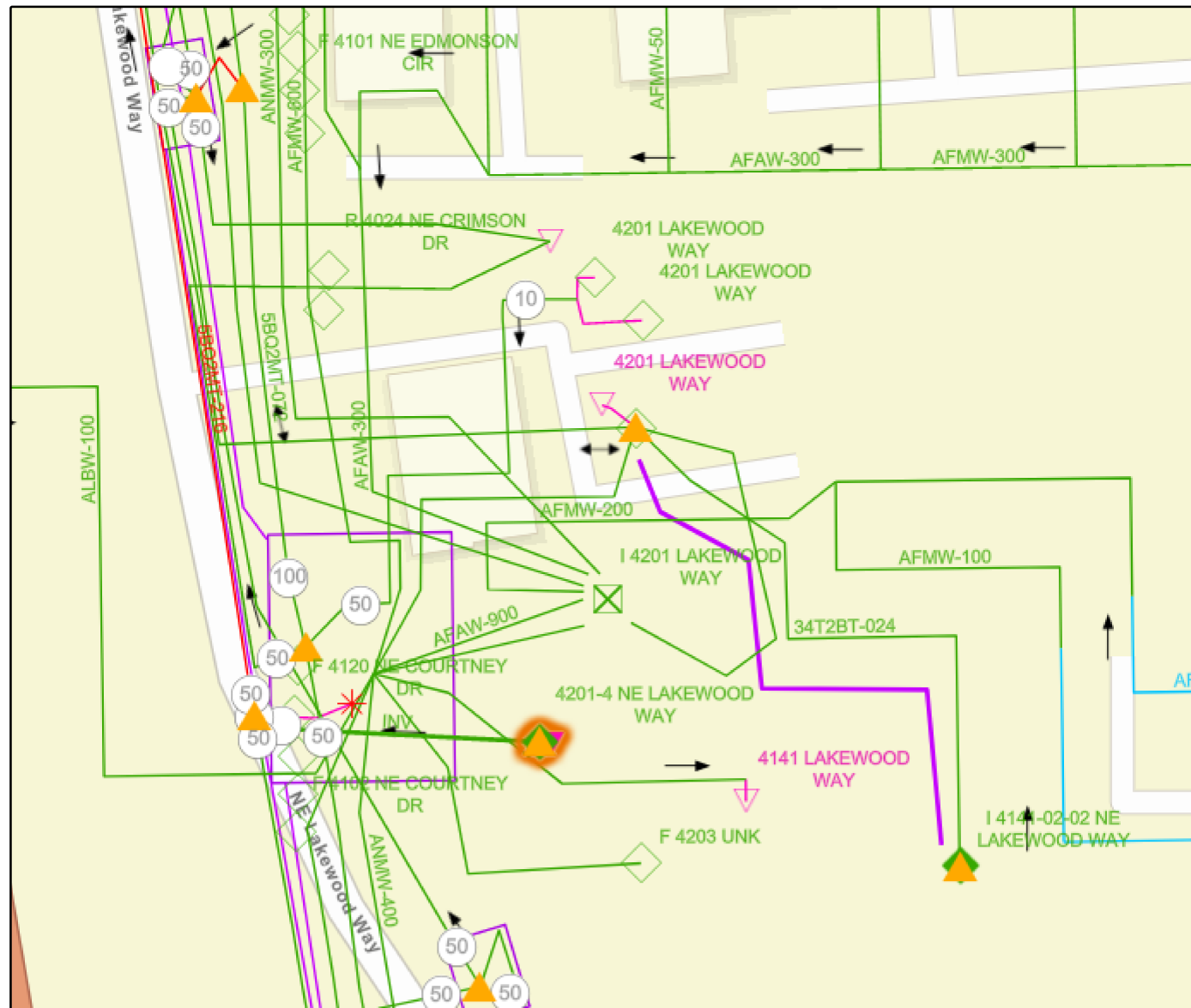


MH FID: 24457019
Distance to ROLT: 100'



1 (2015) 85C 0' 5BQ2MT-216	2 FAP 3300D (2015) 85C C,73-78	3 (PPA) 845C 100' INV	6 (2015) 845C 1955' 5BQ2MT-216	NC	NC	NC	NC
IS012,1-48 NC	IS012,79-144 NC	OLT3300,1-132	IS012,1-4 NC	NC	NC	NC	NC
(IS012,49-52) <A0241NN> A,49-52 NC	IS012,81-84 NC	IS012,5-12 D,141-144	(IS012,5-12) NC	NC	NC	<A02AV8S> E,5-12 NC	NC
IS012,53-56 NC	IS012,85-180 NC		IS012,13-48 NC	NC	NC	NC	NC
<A01PBDV> B,57-60 NC	B,181-216 NC		(IS012,49-52) <A0241NN> A,49-52 NC	NC	NC	NC	NC
IS012,61-72 NC			IS012,53-56 NC	NC	NC	NC	NC
C,73-78 NC			<A01PBDV> B,57-60 NC	NC	NC	NC	NC
C,79-80 NC			IS012,61-72 NC	NC	NC	NC	NC
(IS012,81-84) NC			(C,73-78) NC	NC	NC	<A02G6Y6> OLT3300,1-6	NC
IS012,85-180 NC			(C,79-80) NC	NC	NC	<A02G6Y6> OLT3300,7-8	NC
B,181-216 NC			(IS012,81-84) NC	NC	NC	<A02G6Y6> OLT3300,9-12	NC
			IS012,85-180 NC	NC	NC	NC	NC
			B,181-216 NC	NC	NC	NC	NC

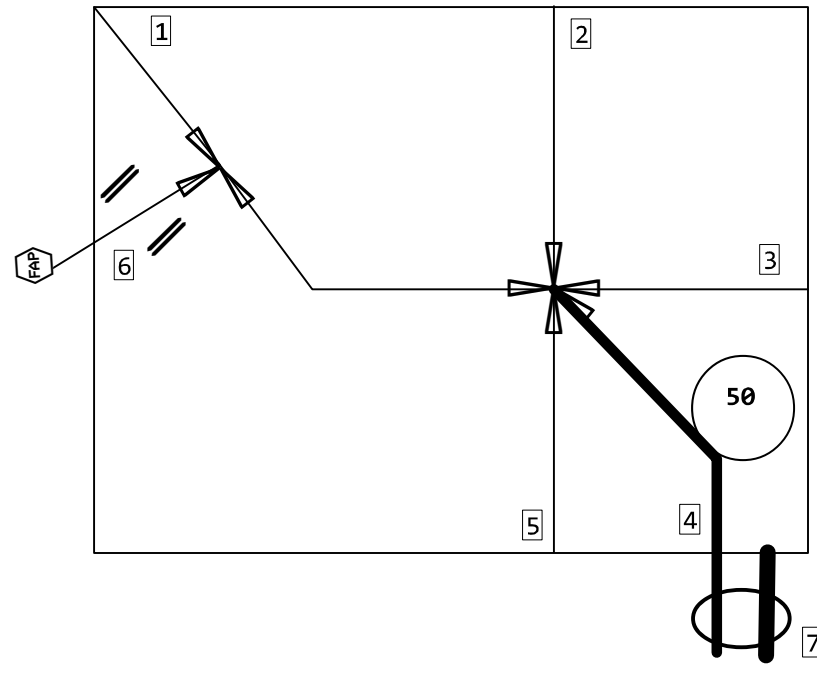
4 LESMMODP 4201-4 NE LAKEWOOD WAY FDF-144 (PPA) 845C OLT3300,1-132 IS012,5-8 D,137-144	5 LESMMODPOL0 ALP-448 (PPA) 9257C 4201-4 NE LAKEWOOD WAY IS012,5-6
---	---



85C
1
24 SPLICE FIBER EXISTING RIB

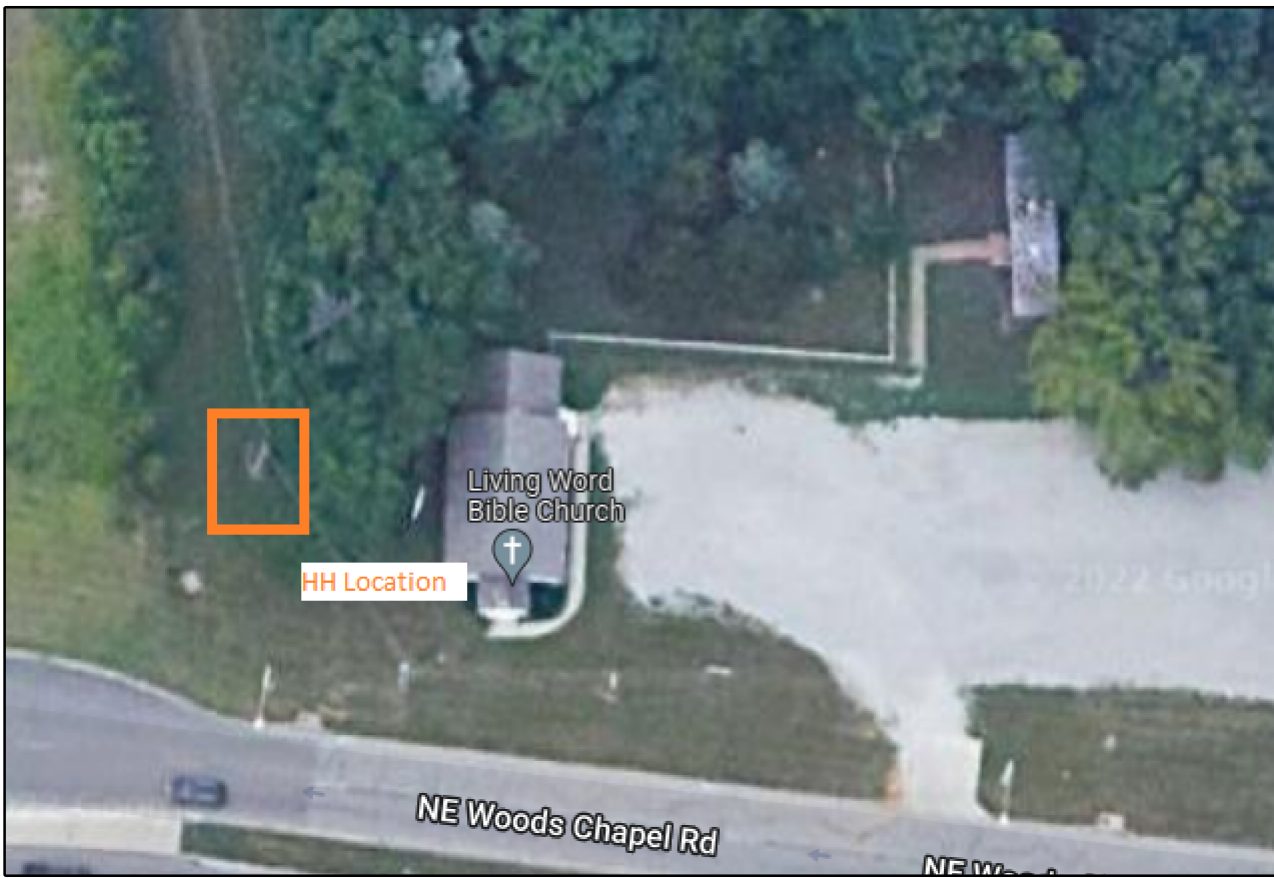
PROJECT # A02G6Y6		DATE SVC REQ'D 12/15/2022	
NPANNX 816373	GEO LOC EE8172	CLLI KSCYMO48	
PRIMARY ENGR.: PEDERSEN, CHARLES M			
ENGR. ID: CP861N		PERMIT REQ'D.	N
PHONE #: 8168133667		PRINT 2 OF 9	

HH FID: 24455075
Distance to ROLT: 2205'



To Print 4

1 (2015) 845C 0' 5BQ2MT-216 IS012,1-4 NC NC NC (IS012,5-12) NC NC <A02AV8S> E,5-12 NC IS012,13-48 NC NC NC (IS012,49-52) <A0241NN> A,49-52 NC NC IS012,53-56 NC NC NC <A01PBDV> B,57-60 NC NC NC IS012,61-72 NC NC NC (C,73-78) NC NC <A02G6Y6> OLT3300,1-6 (C,79-80) NC NC <A02G6Y6> OLT3300,7-8 (IS012,81-84) NC (<A028S6N> A,81-84) NC <A02G6Y6> OLT3300,9-12 IS012,85-180 NC NC NC A,181-216 NC NC NC	2 (2010) 845C 2030' 5BQ2MT-072 IS009,1-22 4201FBR,265-266 IS009,97-98 IS009,95-96 4201FBR,267-276 IS009,51-72	3 (2015) 845C 472' 5BQ2MT-048 B,1-4 4201FBR,53-56 B,9-20 IS009,21-22 B,23-48	4 (PPA) 845C 2691' SR-549JRR-072 OLT3300,1-12 C,13-72
5 (2007) 845C 2461' 5BQ2MT-072 IS009,1-12 NC <A020Y1C> IS012,13-18 NC <A020Y1C> IS012,19-22 NC 4201FBR,265-266 NC IS009,95-96 NC IS009,97-98 NC 4201FBR,267-276 NC 4201FBR,49-52 NC A,53-56 NC 4201FBR,57-58 NC <A020Y1C> IS012,1-2 NC <A020Y1C> IS012,3-4 NC (<A020Y1C> IS012,5-12) <A02AV8S> E,5-12 NC IS009,61-72 NC	6 (2015) 845C (C,73-78) NC (<A02G6Y6> OLT3300,1-6) <A02G6Y6> C,73-78 (C,79-80) NC (<A02G6Y6> OLT3300,7-8) <A02G6Y6> C,79-80 (IS012,81-84) (<A028S6N> A,81-84) (<A02G6Y6> OLT3300,9-12) <A02G6Y6> C,81-84 IS012,85-144 NC NC	7 2549' INNERDUCT1-2" (PPA) 4C	



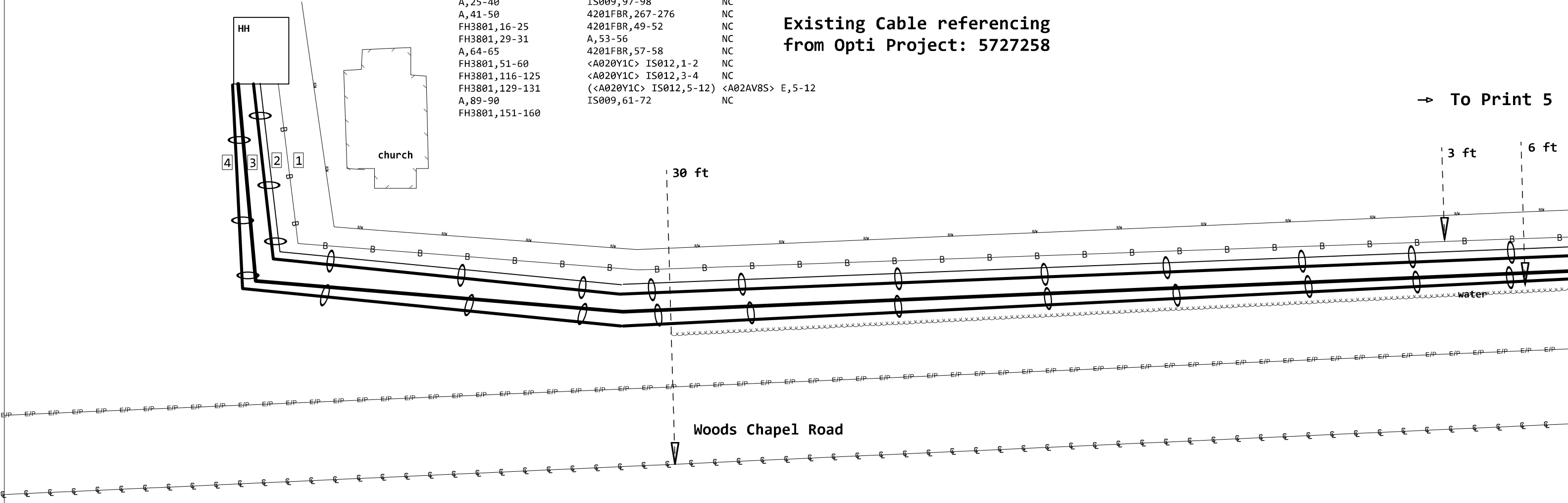
- 1 845C
24 SPLICE FIBER EXISTING RIB
- 2 845C
24 SPLICE FIBER NEW RIBBON Z

PROJECT # A02G6Y6		DATE SVC REQ'D 12/15/2022
NPANNX 816373	GEO LOC EE8172	CLLI KSCYMO48
PRIMARY ENGR.: PEDERSEN, CHARLES M		
ENGR. ID: CP861N	PERMIT REQ'D.	N
PHONE #: 8168133667	PRINT 3	OF 9

- 1** (2007) 45C 691'
ANAW-100
FH3801,61-65
FH3801,161-165
21600WC,711-722
A,23-23
21600WC,724-724
A,25-40
A,41-50
FH3801,16-25
FH3801,29-31
A,64-65
FH3801,51-60
FH3801,116-125
FH3801,129-131
A,89-90
FH3801,151-160
- 2** (2007) 845C 2461'
5BQ2MT-072
IS009,1-12
<A020Y1C> IS012,13-18
<A020Y1C> IS012,19-22
4201FBR,265-266
IS009,95-96
IS009,97-98
4201FBR,267-276
4201FBR,49-52
A,53-56
4201FBR,57-58
<A020Y1C> IS012,1-2
<A020Y1C> IS012,3-4
(<A020Y1C> IS012,5-12) <A02AV8S> E,5-12
IS009,61-72
- 3** (PPA) 845C 2600'
SR-549JRR-072
OLT3300,1-12
C,13-72
- 4** 2549' INNERDUCT1-2" (PPA) 4C

Existing Cable referencing
from Opti Project: 5727258

→ To Print 5

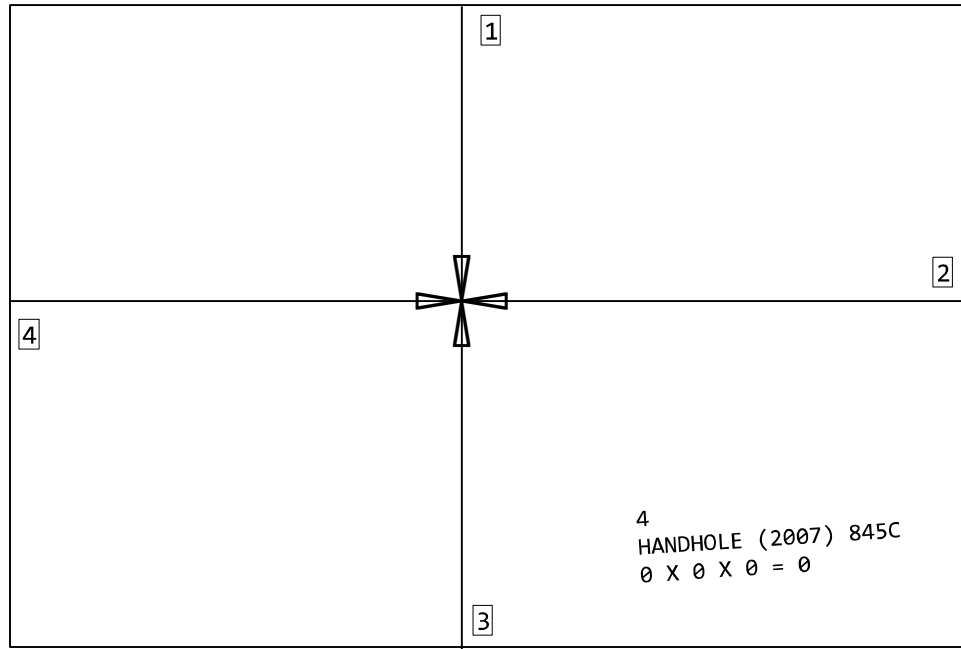


- 1** 845C
INNERDUCT1-2"
2600 SVA ONLY - BORE ? INCLUDE
1 EXEMPT MATERIAL ONLY
- 2** 845C
SR-549JRR-072
2600 SVA ONLY - PLACE ITEM IN
2600 MATERIAL ONLY

PROJECT # A02G6Y6		DATE SVC REQ'D 12/15/2022	
NPANNX 816373	GEO LOC EE8172	CLLI KSCYMO48	
PRIMARY ENGR.: PEDERSEN, CHARLES M			
ENGR. ID: CP861N		PERMIT REQ'D.	N
PHONE #: 8168133667		PRINT 4 OF 9	

Some facilities omitted for clarity
Cable Placement 1 of 3

HH FID: 24458437
 Distance to ROLT: 10382'

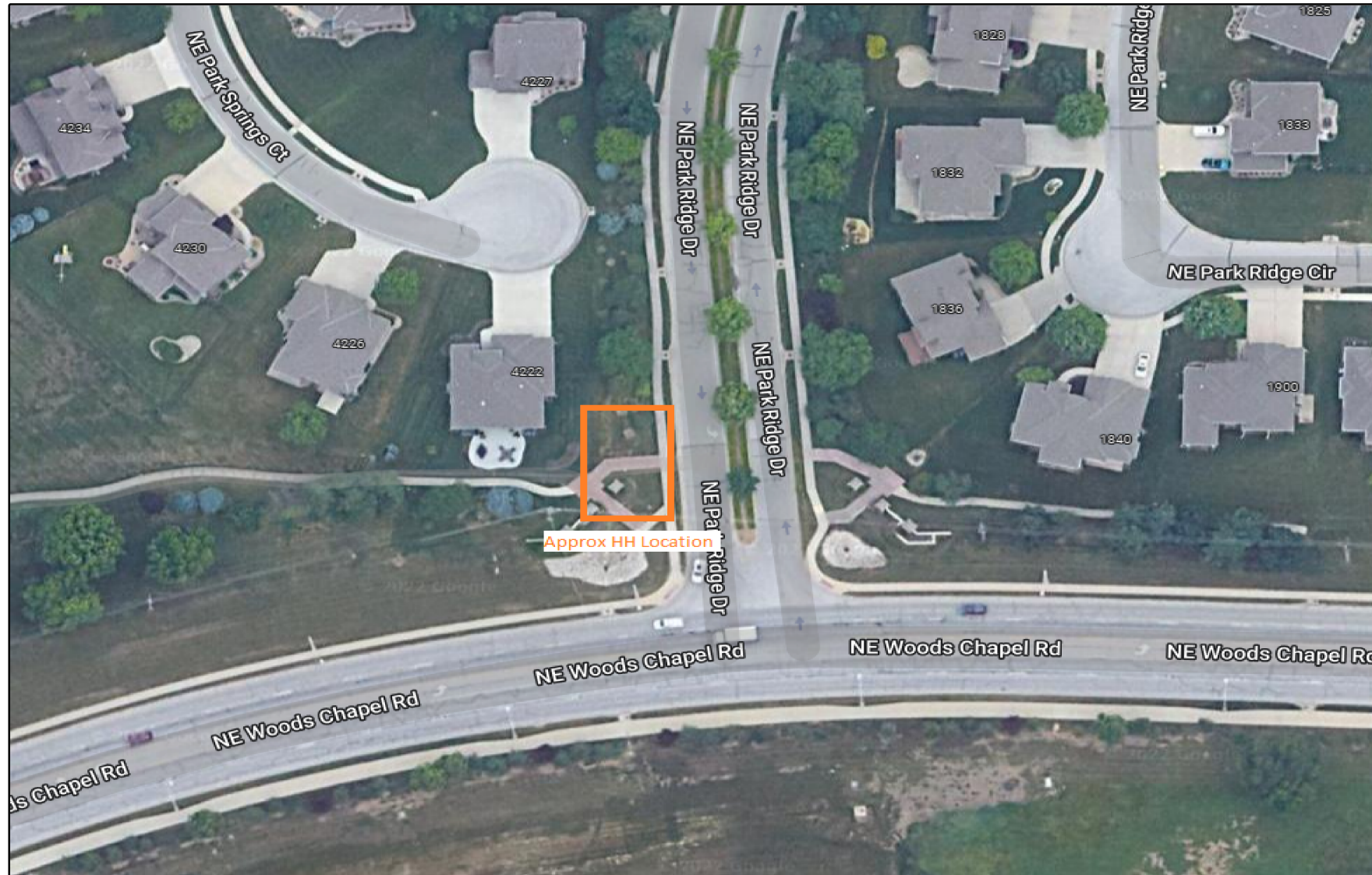


1 (2015) 845C 1578'
 5BQ2MT-072
 IS009,97-98 NC
 C,3-10 NC
 IS009,95-96 NC
 (C,13-14) <A02G6Y6> OLT3300,1-2
 C,15-72 NC

3 (2015) 845C 0'
 5BQ2MT-072
 <A020Y1C> IS012,3-4 NC
 (<A020Y1C> IS012,5-12) <A02AV8S> E,5-12
 IS009,35-36 NC
 D,13-72 NC

2 (2007) 845C 2163'
 5BQ2MT-072
 IS009,1-12
 <A020Y1C> A,13-18
 A,19-20
 <A020Y1C> A,21-22
 4201FBR,265-266
 B,25-26
 4201FBR,267-276
 A,37-38
 A,39-48
 A,49-60
 A,61-72

4 (2007) 845C 0'
 5BQ2MT-072
 IS009,1-12 NC
 (<A028PG4> B,13-14) NC
 <A028PG4> B,15-18 NC
 <A020Y1C> IS012,19-22 NC
 4201FBR,265-266 NC
 IS009,97-98 NC
 IS009,95-96 NC
 4201FBR,267-276 NC
 A,35-36 NC
 A,39-46 NC
 <A020Y1C> IS012,1-2 NC
 <A020Y1C> IS012,3-4 NC
 (<A020Y1C> IS012,5-12) <A02AV8S> E,5-12 NC
 A,61-72 NC



1 845C
 4 SPLICE FIBER EXISTING RIB

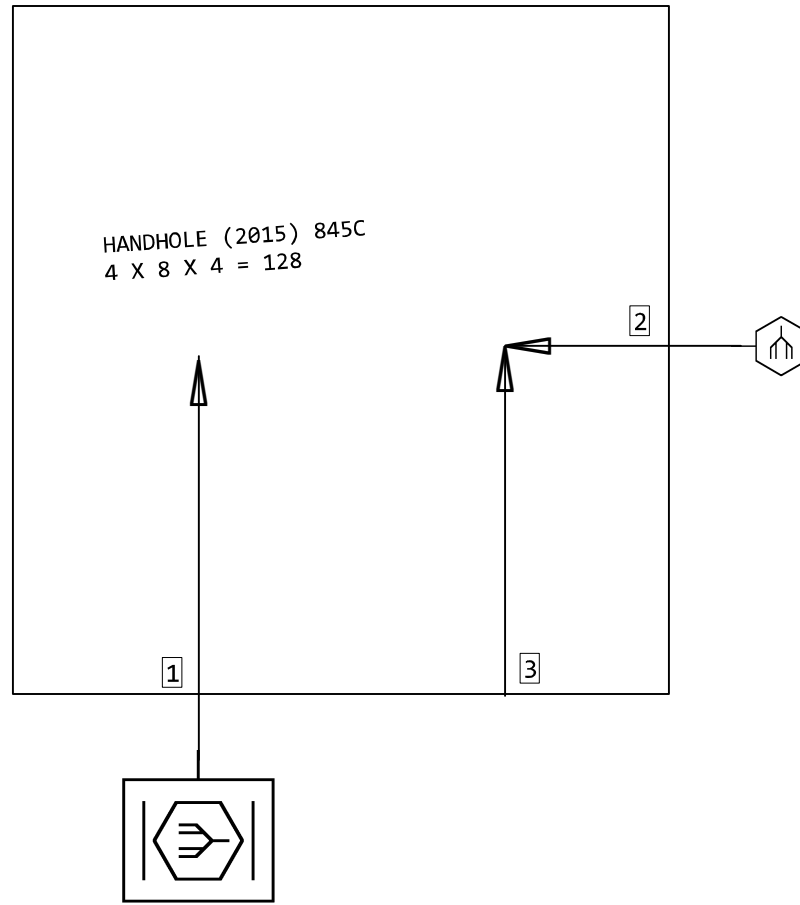
PROJECT # A02G6Y6		DATE SVC REQ'D 12/15/2022
NPANNX 816373	GEO LOC EE8172	CLLI KSCYMO48
PRIMARY ENGR.: PEDERSEN, CHARLES M		
ENGR. ID: CP861N	PERMIT REQ'D.	N
PHONE #: 8168133667	PRINT	8 OF 9

PFP HH FID: 24456506
Distance to ROLT: 11960'

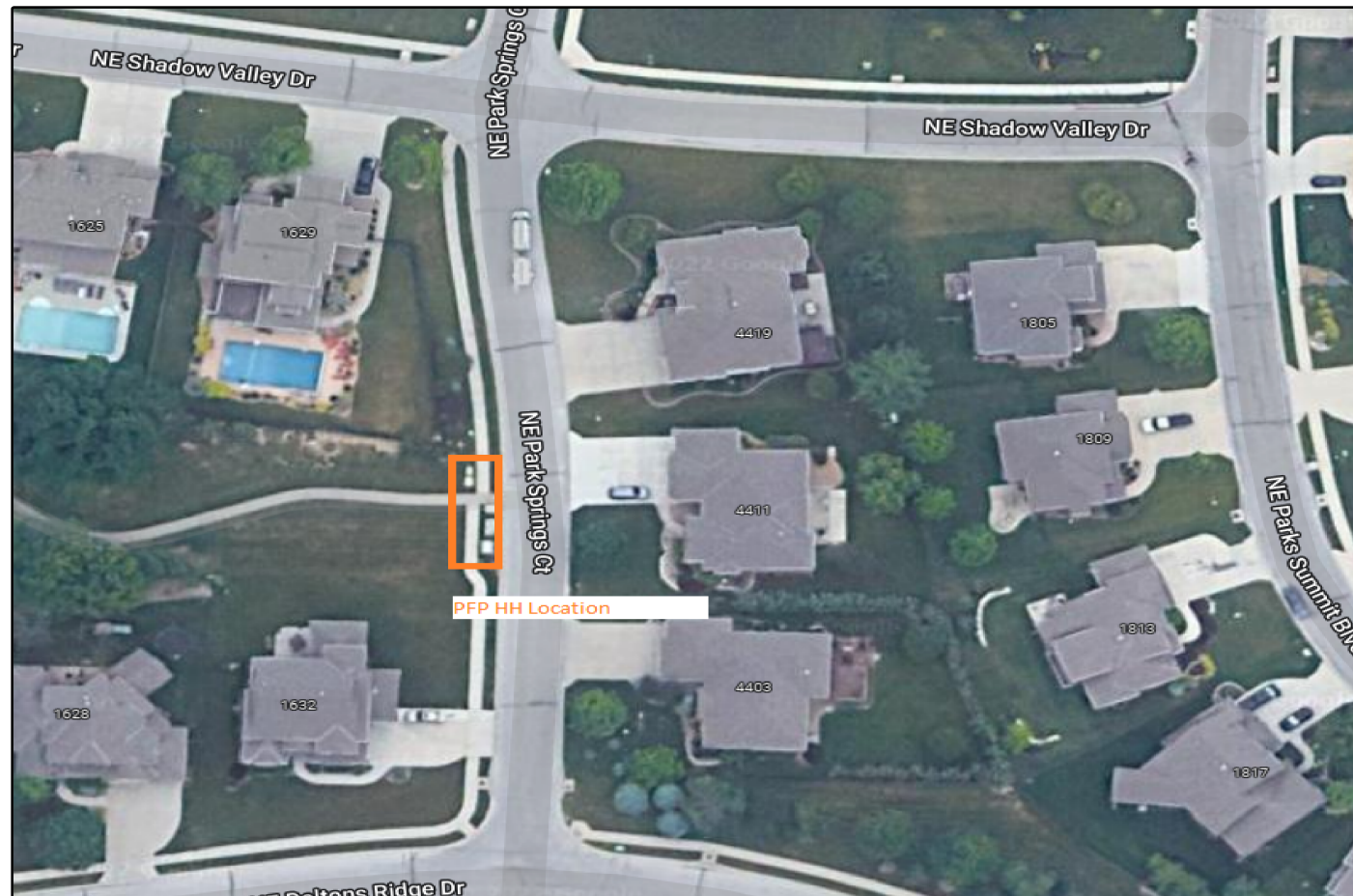
1 KSCYMO48PFP
1632 NE DALTONS RIDGE DR
BABMS864-100ST (2015) 845C
Y SPT3807PA,1-32
PON1632NED,1-864
BABMS864-100ST (2018) 845C
Y SPT3807PA,33-64
NEW BABMS576-100ST (PPA) 845C
Y SPT3807PA,65-192

2 kscymo48
1632 NE DALTONS RIDGE DR
FONS432/8641X16 (2015) 845C
IS009,97-98
IS009,95-96
1X16 SPT3807PA,1-32
1X16 SPT3807PA,33-64
NEW BABMS576-100ST (PPA) 845C
OLT3300,1-2
1X64 SPT3807PA,65-192

3 (2015) 845C 1578'
5BQ2MT-072
IS009,97-98 NC
C,3-10 NC
IS009,95-96 NC
(C,13-14) <A02G6Y6> OLT3300,1-2
C,15-72 NC



Address: R 1632 NE Daltons Ridge Dr



Qty 2: 1x64 Splitters
PID: 200004827

- 1 845C
4 SPLICE FIBER EXISTING RIB
- 2 845C
6 TERMINATE
- 3 845C
SPLSCAPC1X64LS
2 PLACE MATERIAL ONLY PER E
2 NO LABOR ASSOCIATED WITH
- 4 845C
130 TESTING FIBER FACILITIES
- 5 845C
130 TESTING FIBER FACILITIES

PROJECT # A02G6Y6		DATE SVC REQ'D 12/15/2022	
NPANNX 816373	GEO LOC EE8172	CLLI KSCYMO48	
PRIMARY ENGR.: PEDERSEN, CHARLES M			
ENGR. ID: CP861N		PERMIT REQ'D.	N
PHONE #: 8168133667		PRINT 9 OF 9	