

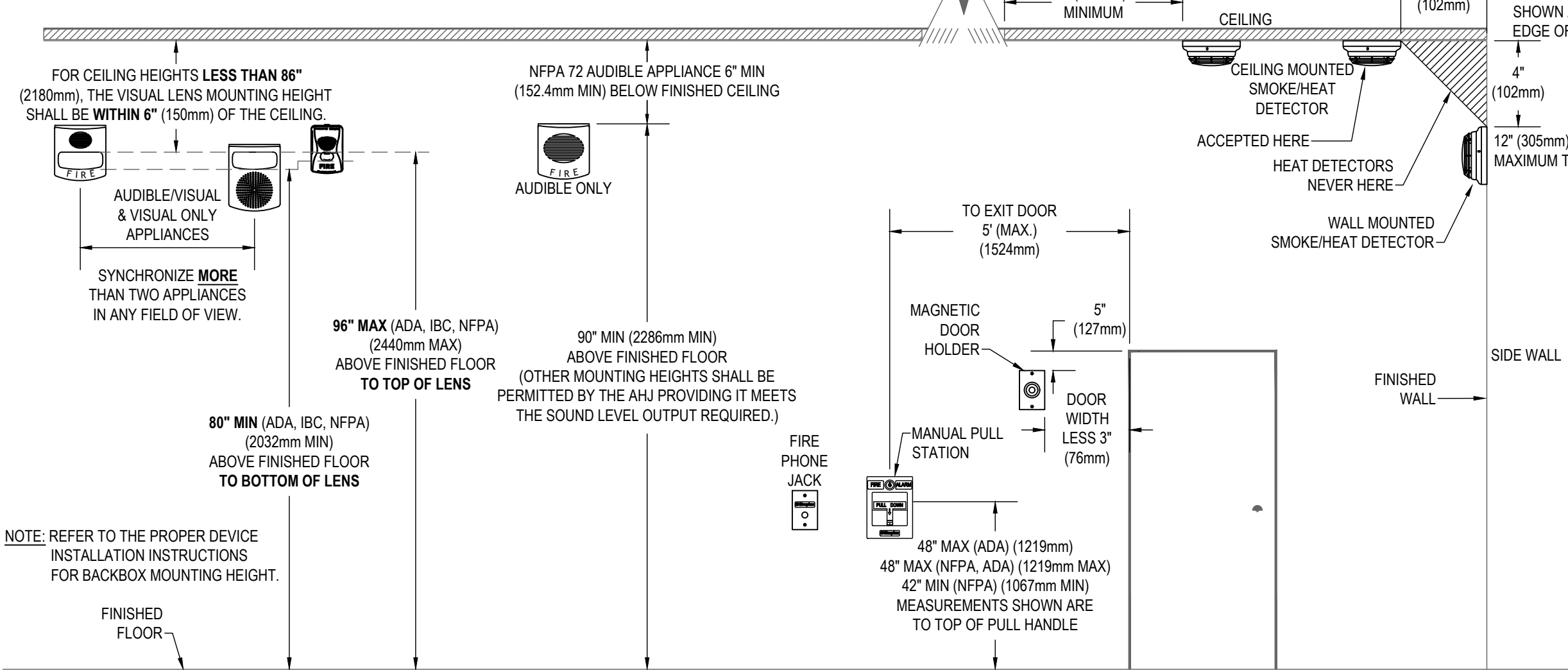




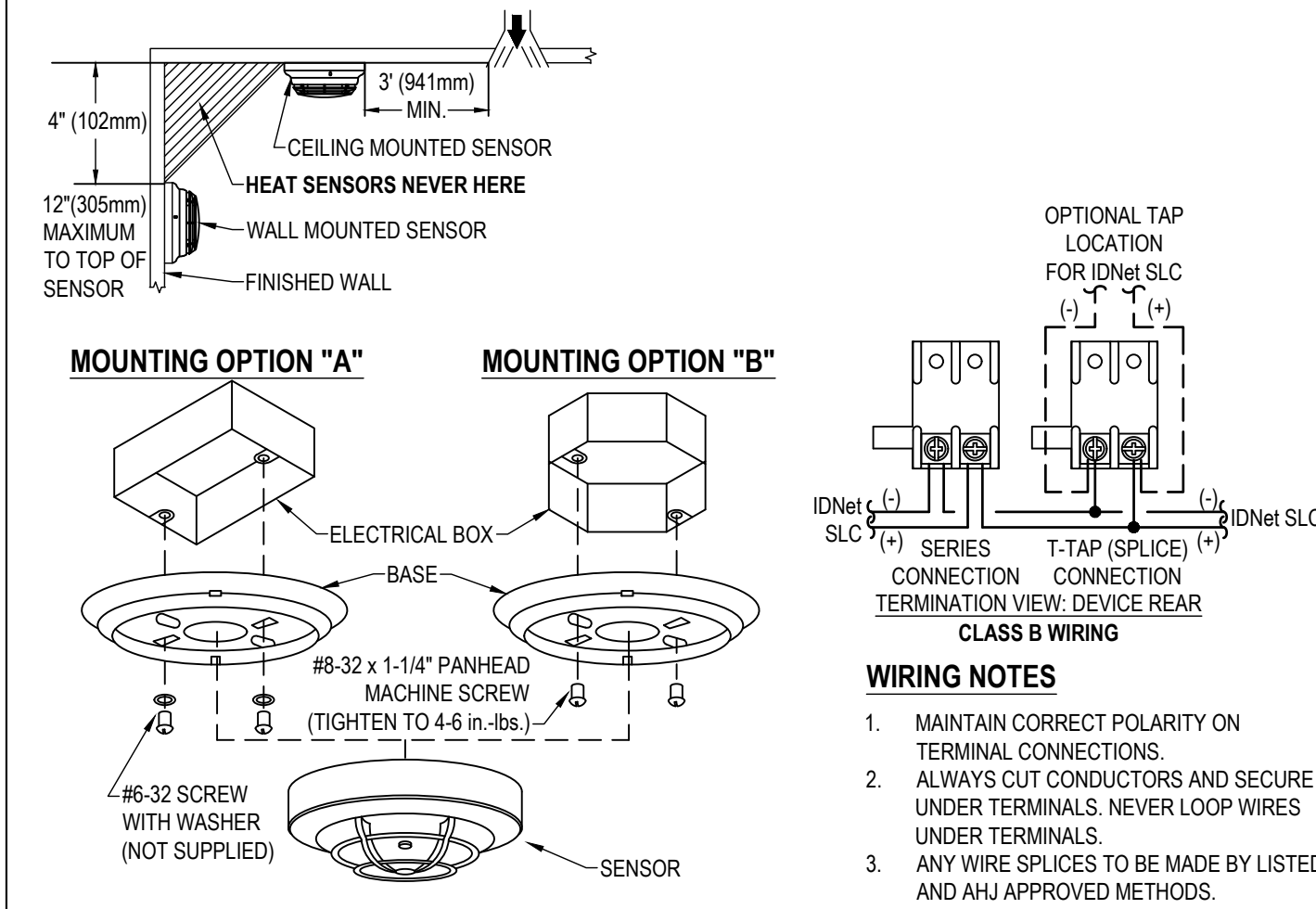
## PER NFPA 72

VISUAL APPLIANCE MOUNTING HEIGHT CONSIDERATIONS IN SLEEPING ROOMS

1. MIN DISTANCE IN SLEEPING ROOMS IS 24" (610mm) FROM CEILING TO TOP OF LENS FOR 110CD STROBES WITHIN 16' OF THE PILLOW
2. 177CD STROBES, USED IN SLEEPING ROOMS, CAN BE WITHIN THE 24" (610mm) MINIMUM DISTANCE FROM THE CEILING. THE HIGHER INTENSITY IS TO COMPENSATE FOR A POSSIBLE SMOKE LAYER.



## SIMPLEX 4098-9792



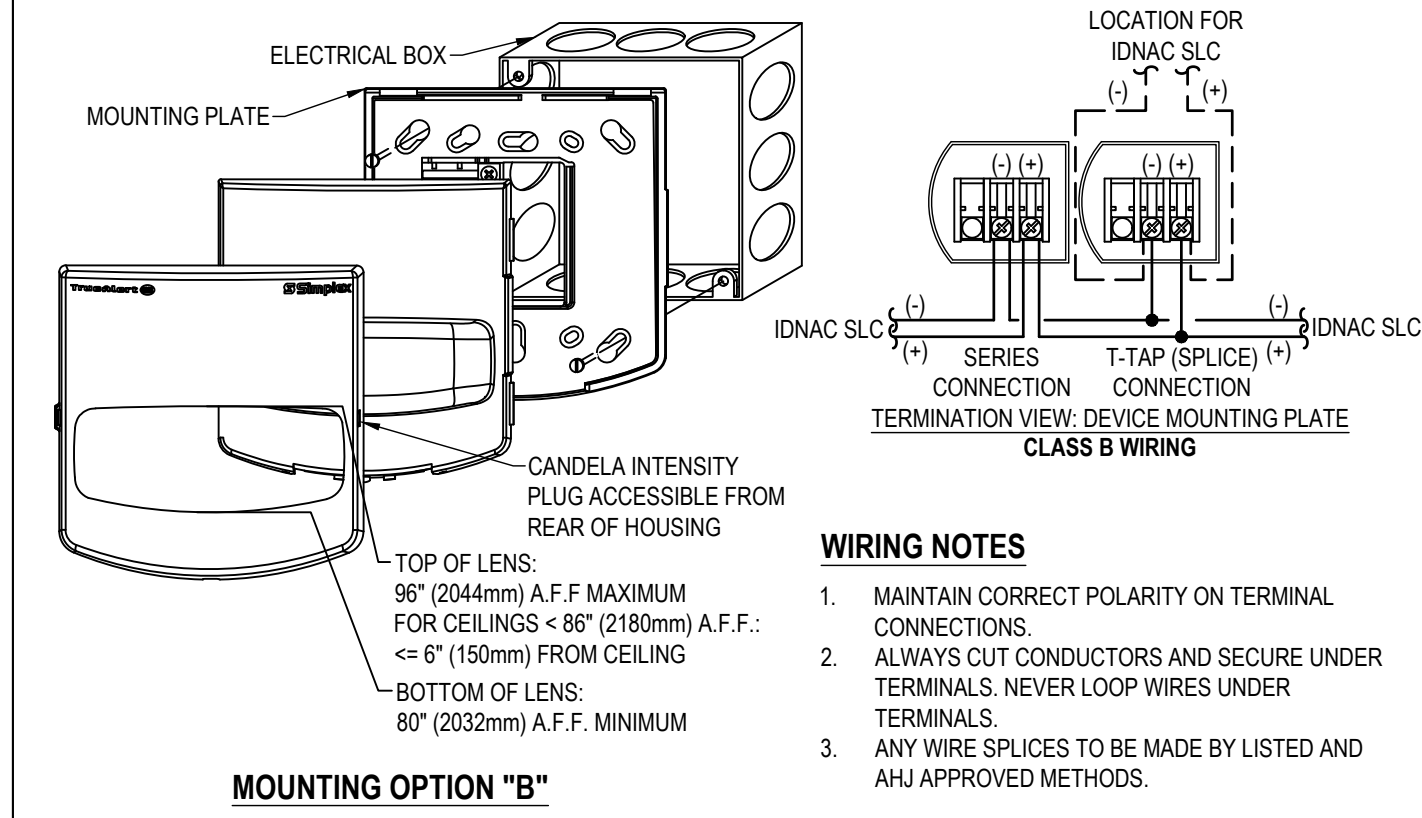
OPTION	DESCRIPTION	NOTE
A	SINGLE GANG BOX, 2-1/8" (54mm) DEEP - FLUSH MOUNT	BY OTHERS
B	1" (102mm) OCTAGONAL BOX, 1-1/2" (38mm) DEEP, MINIMUM - FLUSH MOUNT	BY OTHERS
C	4" (102mm) SQUARE BOX, 1-1/2" DEEP (MIN) W/ SIMPLEX 4098-9832 ADAPTER KIT	BOX BY OTHERS, 4098-9832 ORDERED SEPARATELY
D	4" (102mm) SQUARE BOX, 1-1/2" DEEP (MIN) W/ SINGLE GANG COVER PLATE (1/2" EXTENSION)	BY OTHERS

1. FOR ADDITIONAL MOUNTING OPTIONS, DOWNLOAD DATA SHEET 4098-0019 FROM [HTTP://WWW.SIMPLEX-FIRE.COM](http://www.simplex-fire.com)

## SIMPLEX 49VO SERIES WALL MOUNTED VISUAL ONLY

**IMPORTANT**

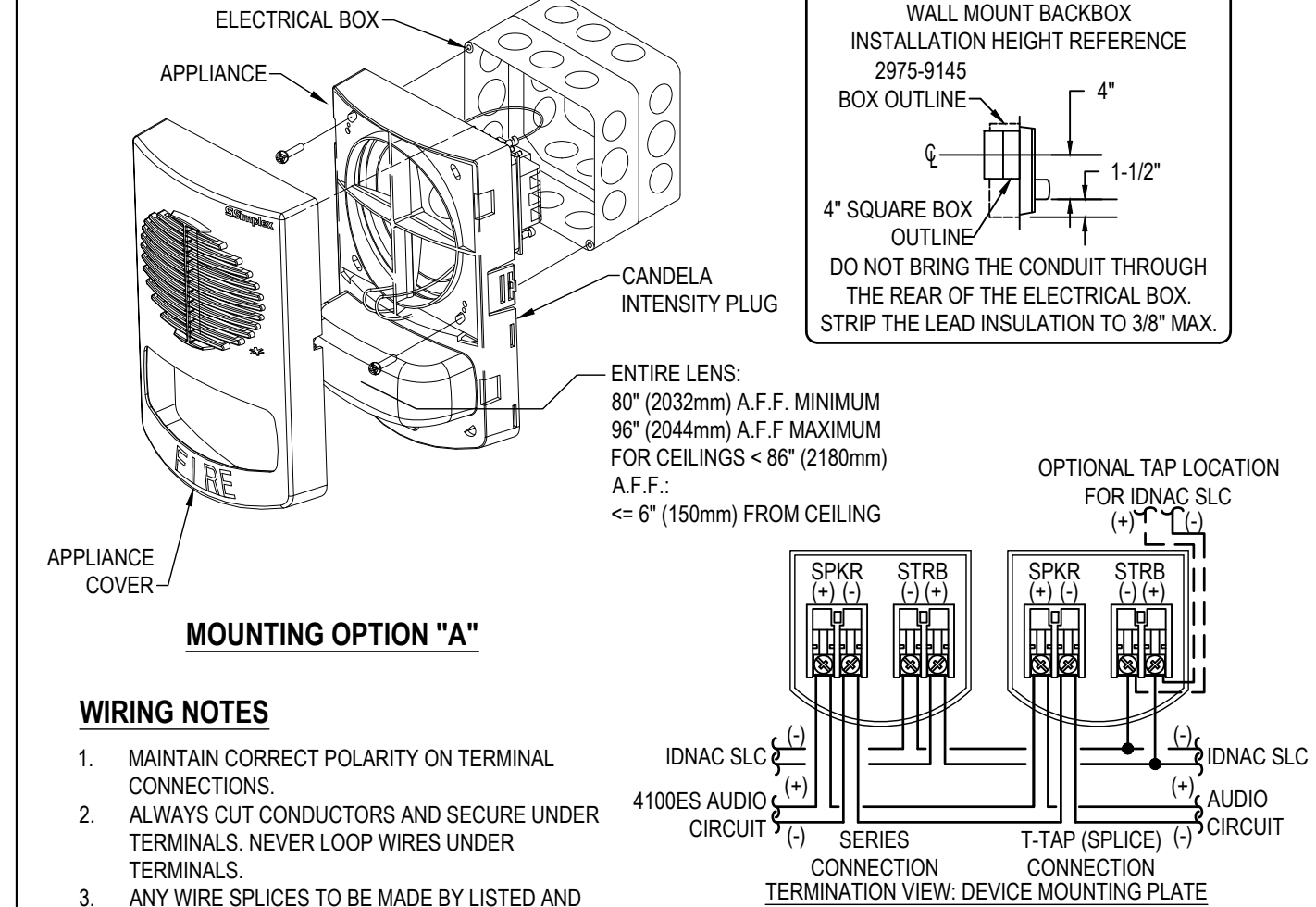
DO NOT BRING THE CONDUIT THROUGH  
THE REAR OF THE ELECTRICAL BOX.  
STRIP THE LEAD INSULATION TO 7/16" MAX



MOUNTING OPTIONS		
OPTION <sup>1</sup>	DESCRIPTION	NOTE
A	SINGLE GANG OR DOUBLE GANG BOX, 1-1/2" (38mm) DEEP (MIN)	BY OTHERS
B	4" (102mm) SQUARE BOX, 1-1/2" DEEP (MIN)	BY OTHERS
C	SIMPLEX 2975-9145, 7-7/8"H x 5-1/8"W x 2-3/4"D <small>(112.7mm x 68.8mm x 56.0mm). REQUIRES 1905, 9941 PLATE</small>	ORDERED SEPARATELY

1. FOR ADDITIONAL MOUNTING OPTIONS, DOWNLOAD DATA SHEET S49VO-0001 FROM [HTTP://WWW.SIMPLEX-FIRE.COM](http://www.simplex-fire.com)

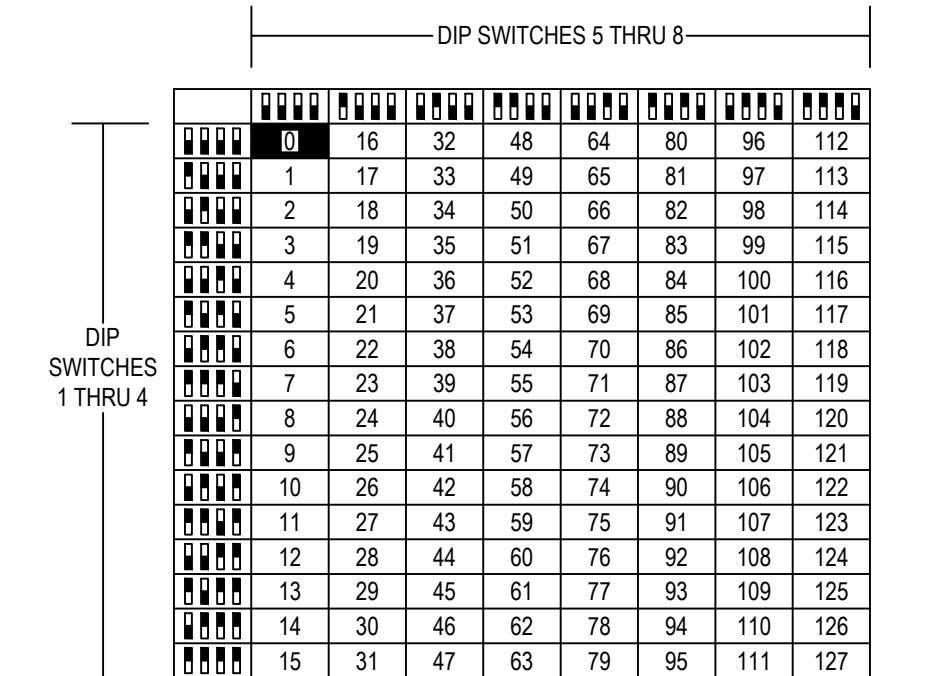
## SIMPLEX 4906 SERIES WALL MOUNTED SPEAKER / VISUAL



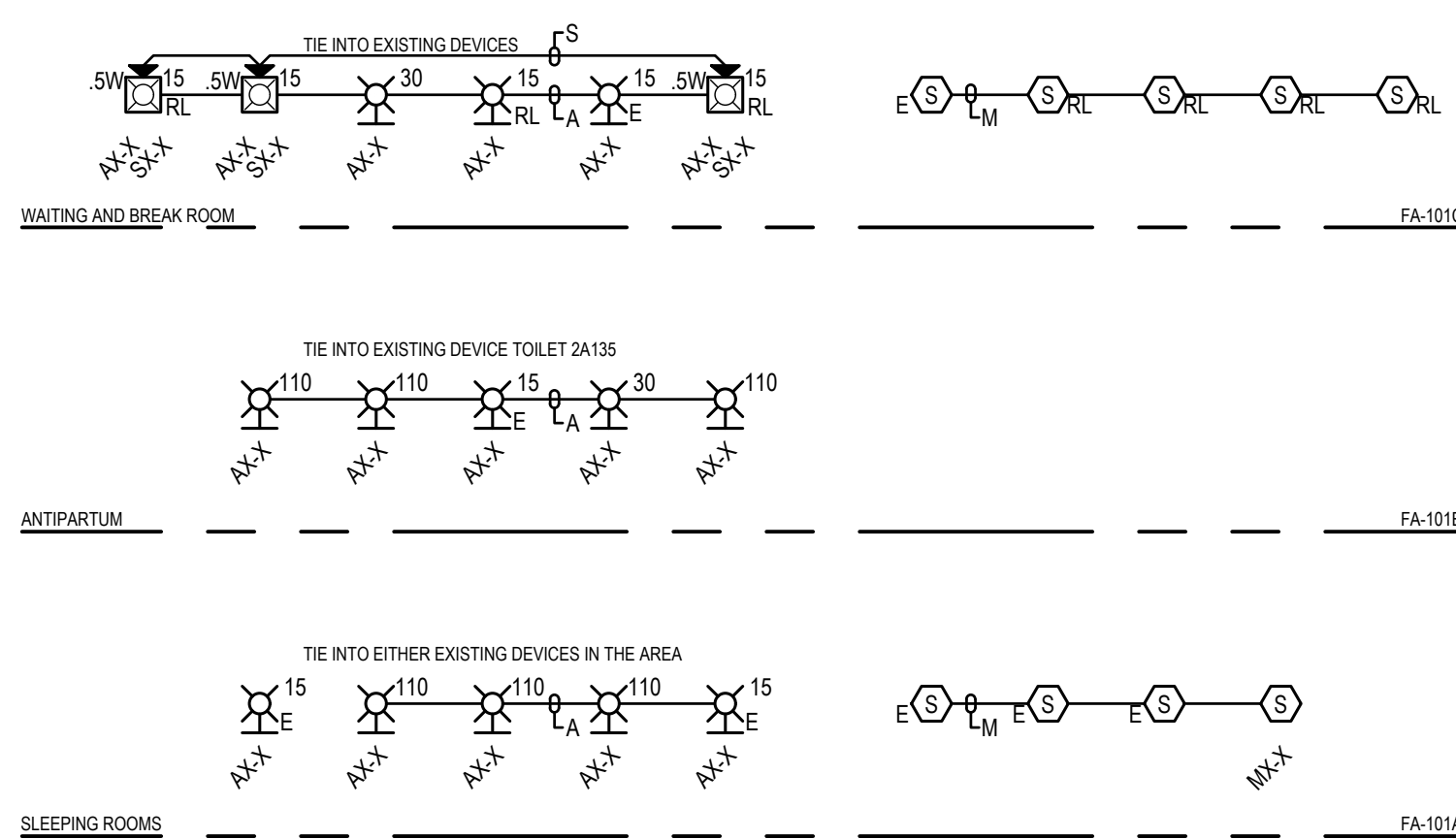
MOUNTING OPTIONS		
OPTION	DESCRIPTION	NOTE
A	4" (102mm) SQUARE BOX, 1-1/2" (38mm) DEEP, WITH 1-1/2" (38mm) EXTENSION RING - FLUSH MOUNTING	BY OTHERS
B	SIMPLEX 2975-9145 SURFACE MOUNT BOX WITH SIMPLEX 4905-9903 ADAPTER PLATE	ORDERED SEPARATELY
C	4" (102mm) SQUARE BOX, 1-1/2" (38mm) DEEP, WITH 1-1/2" (38mm) EXTENSION RING - 9145/9146/9147/9148/9149/9150/9151/9152/9153/9154/9155/9156/9157/9158/9159/9160/9161/9162/9163/9164/9165/9166/9167/9168/9169/9170/9171/9172/9173/9174/9175/9176/9177/9178/9179/9180/9181/9182/9183/9184/9185/9186/9187/9188/9189/9190/9191/9192/9193/9194/9195/9196/9197/9198/9199/9200/9201/9202/9203/9204/9205/9206/9207/9208/9209/9210/9211/9212/9213/9214/9215/9216/9217/9218/9219/9220/9221/9222/9223/9224/9225/9226/9227/9228/9229/9230/9231/9232/9233/9234/9235/9236/9237/9238/9239/9240/9241/9242/9243/9244/9245/9246/9247/9248/9249/9250/9251/9252/9253/9254/9255/9256/9257/9258/9259/9260/9261/9262/9263/9264/9265/9266/9267/9268/9269/9270/9271/9272/9273/9274/9275/9276/9277/9278/9279/9280/9281/9282/9283/9284/9285/9286/9287/9288/9289/9290/9291/9292/9293/9294/9295/9296/9297/9298/9299/9300/9301/9302/9303/9304/9305/9306/9307/9308/9309/9310/9311/9312/9313/9314/9315/9316/9317/9318/9319/9320/9321/9322/9323/9324/9325/9326/9327/9328/9329/9330/9331/9332/9333/9334/9335/9336/9337/9338/9339/9340/9341/9342/9343/9344/9345/9346/9347/9348/9349/9350/9351/9352/9353/9354/9355/9356/9357/9358/9359/9360/9361/9362/9363/9364/9365/9366/9367/9368/9369/9370/9371/9372/9373/9374/9375/9376/9377/9378/9379/9380/9381/9382/9383/9384/9385/9386/9387/9388/9389/9390/9391/9392/9393/9394/9395/9396/9397/9398/9399/9400/9401/9402/9403/9404/9405/9406/9407/9408/9409/9410/9411/9412/9413/9414/9415/9416/9417/9418/9419/9420/9421/9422/9423/9424/9425/9426/9427/9428/9429/9430/9431/9432/9433/9434/9435/9436/9437/9438/9439/9440/9441/9442/9443/9444/9445/9446/9447/9448/9449/9450/9451/9452/9453/9454/9455/9456/9457/9458/9459/9460/9461/9462/9463/9464/9465/9466/9467/9468/9469/9470/9471/9472/9473/9474/9475/9476/9477/9478/9479/9480/9481/9482/9483/9484/9485/9486/9487/9488/9489/9490/9491/9492/9493/9494/9495/9496/9497/9498/9499/9500/9501/9502/9503/9504/9505/9506/9507/9508/9509/9510/9511/9512/9513/9514/9515/9516/9517/9518/9519/9520/9521/9522/9523/9524/9525/9526/9527/9528/9529/9530/9531/9532/9533/9534/9535/9536/9537/9538/9539/9540/9541/9542/9543/9544/9545/9546/9547/9548/9549/9550/9551/9552/9553/9554/9555/9556/9557/9558/9559/9560/9561/9562/9563/9564/9565/9566/9567/9568/9569/9570/9571/9572/9573/9574/9575/9576/9577/9578/9579/9580/9581/9582/9583/9584/9585/9586/9587/9588/9589/9590/9591/9592/9593/9594/9595/9596/9597/9598/9599/9600/9601/9602/9603/9604/9605/9606/9607/9608/9609/9610/9611/9612/9613/9614/9615/9616/9617/9618/9619/9620/9621/9622/9623/9624/9625/9626/9627/9628/9629/9630/9631/9632/9633/9634/9635/9636/9637/9638/9639/9640/9641/9642/9643/9644/9645/9646/9647/9648/9649/9650/9651/9652/9653/9654/9655/9656/9657/9658/9659/9660/9661/9662/9663/9664/9665/9666/9667/9668/9669/9670/9671/9672/9673/9674/9675/9676/9677/9678/9679/9680/9681/9682/9683/9684/9685/9686/9687/9688/9689/9690/9691/9692/9693/9694/9695/9696/9697/9698/9699/9700/9701/9702/9703/9704/9705/9706/9707/9708/9709/9710/9711/9712/9713/9714/9715/9716/9717/9718/9719/9720/9721/9722/9723/9724/9725/9726/9727/9728/9729/9730/9731/9732/9733/9734/9735/9736/9737/9738/9739/9740/9741/9742/9743/9744/9745/9746/9747/9748/9749/9750/9751/9752/9753/9754/9755/9756/9757/9758/9759/9760/9761/9762/9763/9764/9765/9766/9767/9768/9769/9770/9771/9772/9773/9774/9775/9776/9777/9778/9779/9780/9781/9782/9783/9784/9785/9786/9787/9788/9789/9790/9791/9792/9793/9794/9795/9796/9797/9798/9799/9800/9801/9802/9803/9804/9805/9806/9807/9808/9809/9810/9811/9812/9813/9814/9815/9816/9817/9818/9819/9820/9821/9822/9823/9824/9825/9826/9827/9828/9829/9830/9831/9832/9833/9834/9835/9836/9837/9838/9839/9840/9841/9842/9843/9844/9845/9846/9847/9848/9849/9850/9851/9852/9853/9854/9855/9856/9857/9858/9859/9860/9861/9862/9863/9864/9865/9866/9867/9868/9869/9870/9871/9872/9873/9874/9875/9876/9877/9878/9879/9880/9881/9882/9883/9884/9885/9886/9887/9888/9889/9890/9891/9892/9893/9894/9895/9896/9897/9898/9899/9900/9901/9902/9903/9904/9905/9906/9907/9908/9909/9910/9911	SIMPLEX ADAPTER SKIRT 86/0 UNFD.

1. FOR ADDITIONAL MOUNTING OPTIONS, DOWNLOAD DATA SHEET 4906-0006 FROM [HTTP://WWW.SIMPLEX-FIRE.COM](http://www.simplex-fire.com)

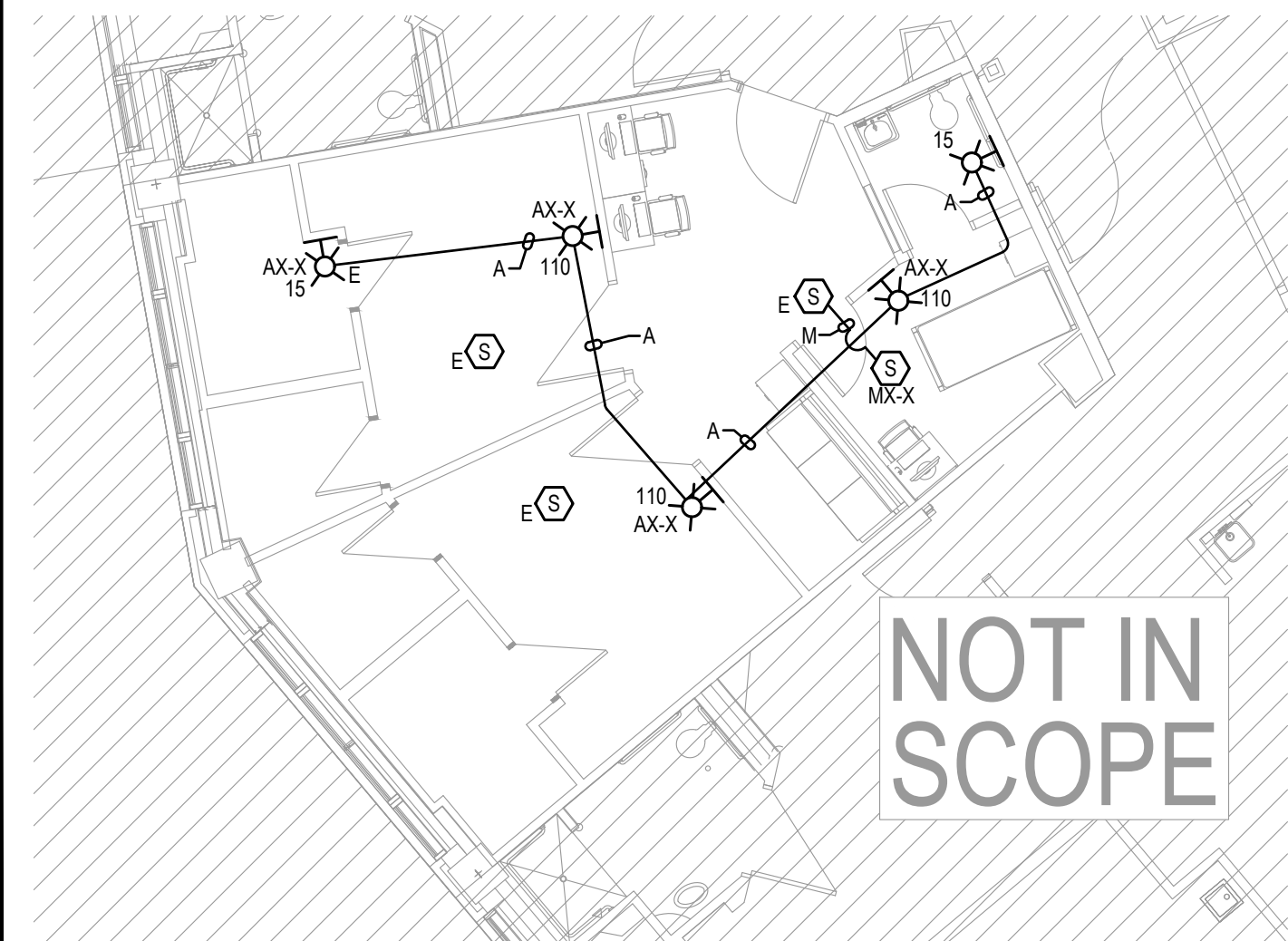
## SIMPLEX TRUEALERT ES / IDNAC



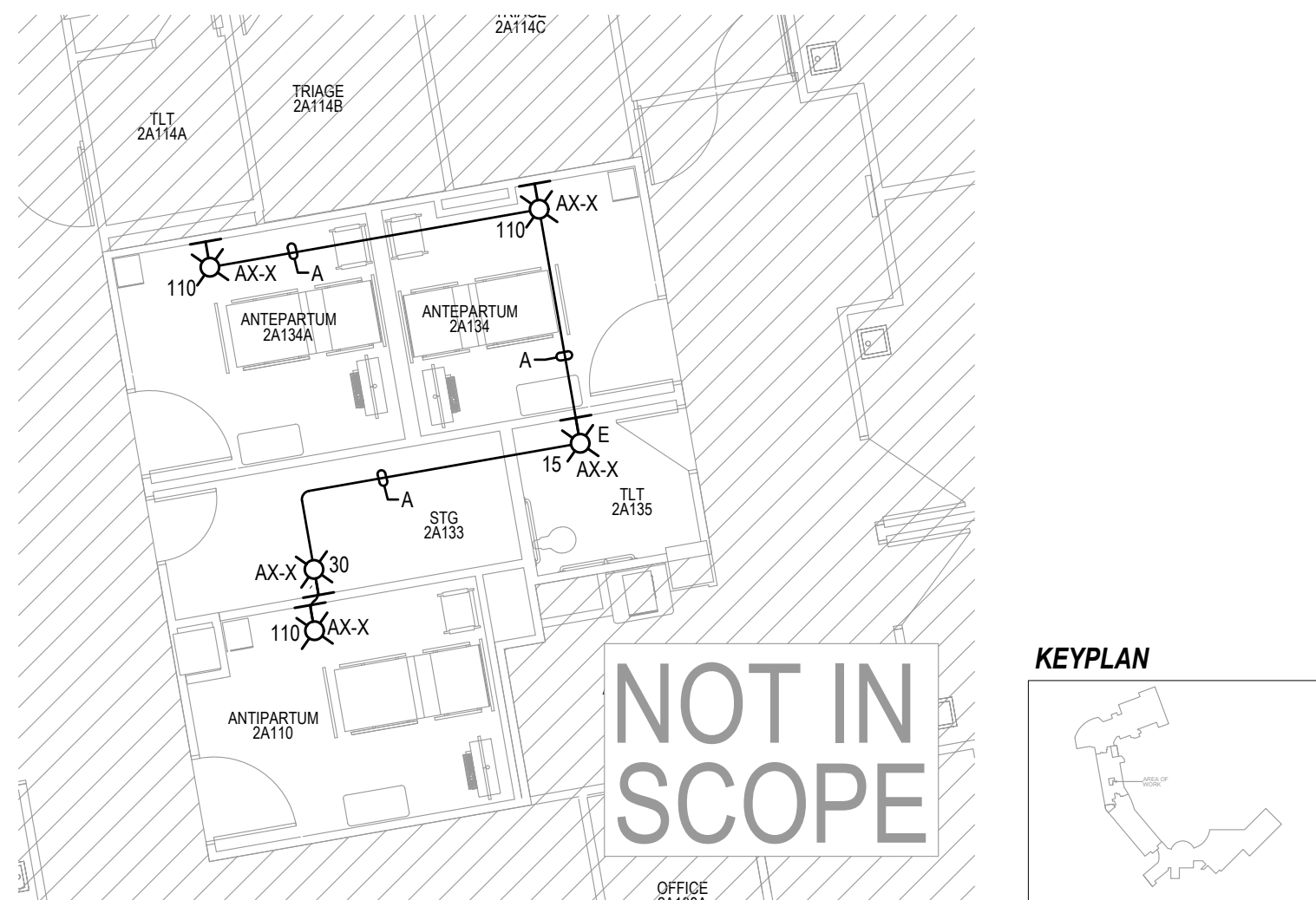
**SCALE:NTS**



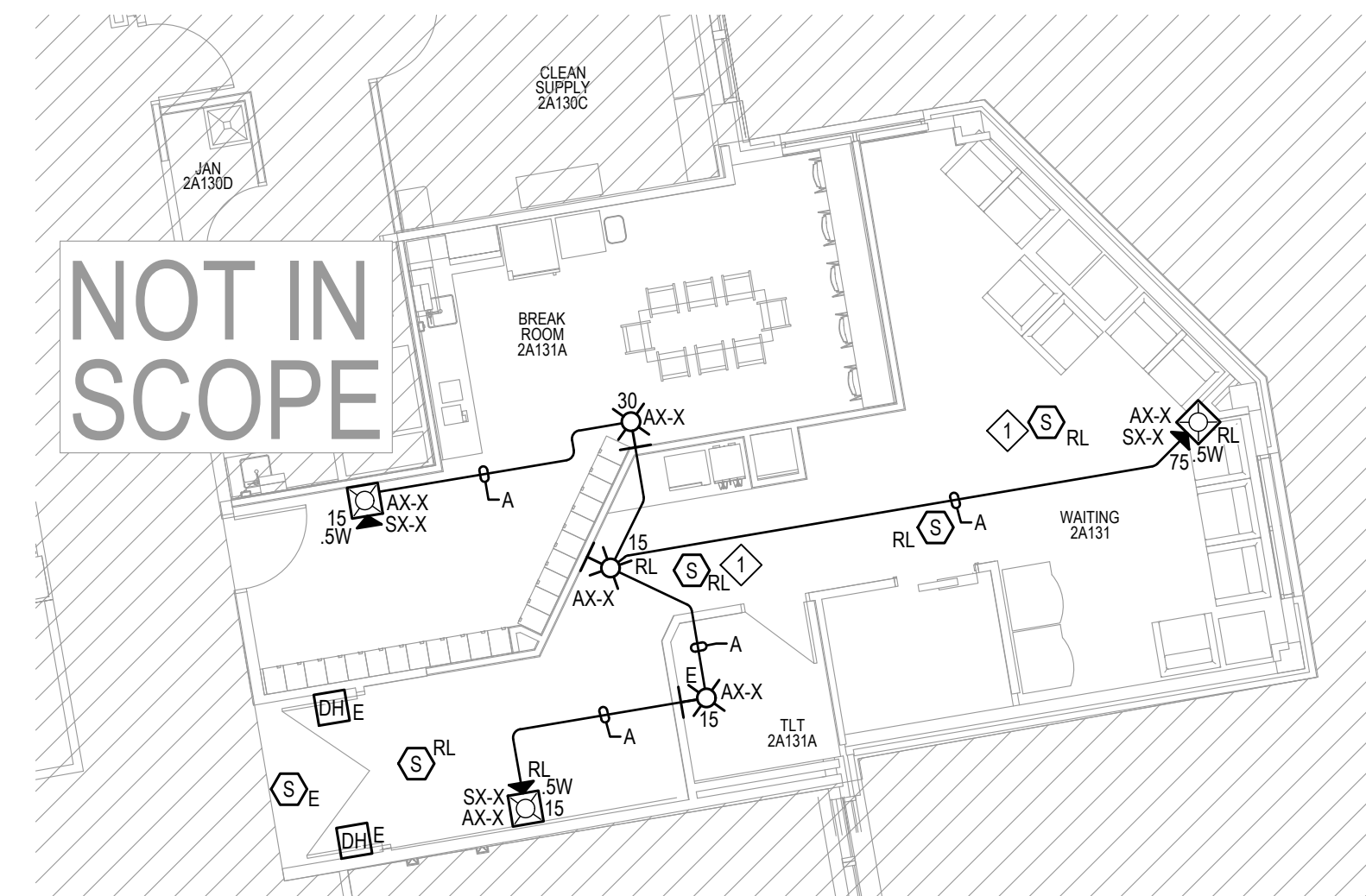
## SCALE:NTS



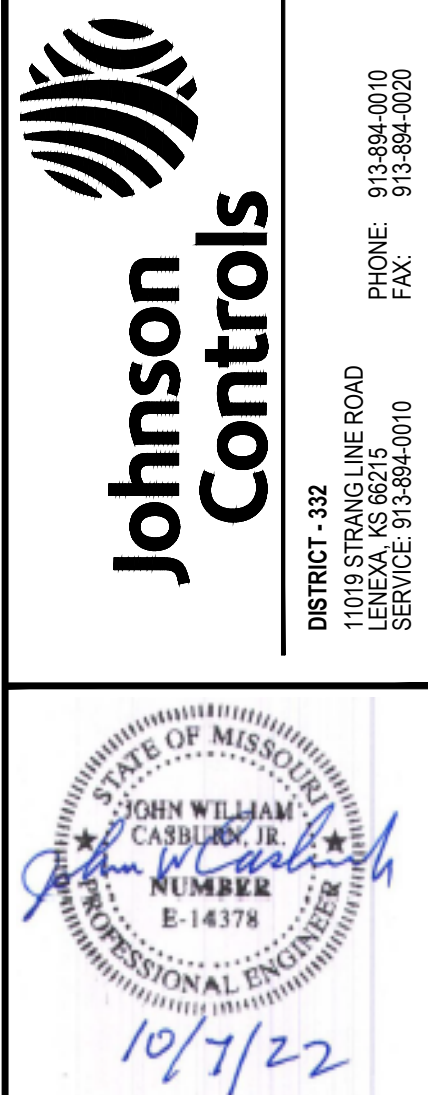
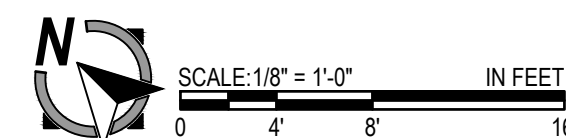
**SCALE: 1/8" = 1'-0"**



**SCALE: 1/8" = 1'-0"**



**SCALE: 1/8" = 1'-0"**



## SLE MOTHER BABY REFRESH

ST. LUKES HOSPITAL  
100 NE SAINT LUKE'S BLVD  
LEE'S SUMMIT, MO 64086

[illegible]

DRAWN BY:	TIM EUBANKS
CHECKED BY:	.
ISSUE DATE:	9/29/22
JOB #:	
PROJECT #:	332-650211514

SYSTEM:	<b>FIRE ALARM SYSTEM</b>
SHEET:	

## DEVICE DETAILS

FA-101