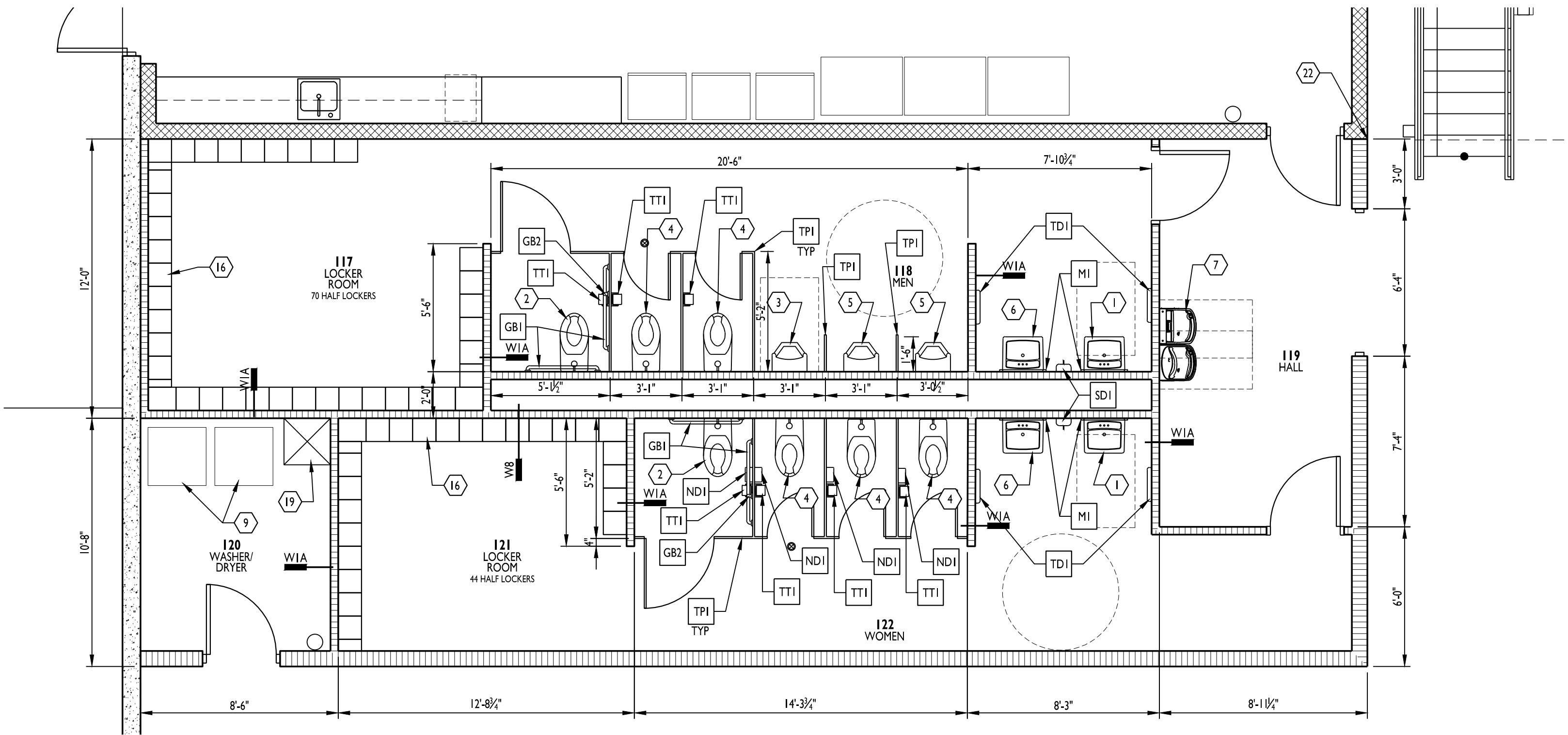
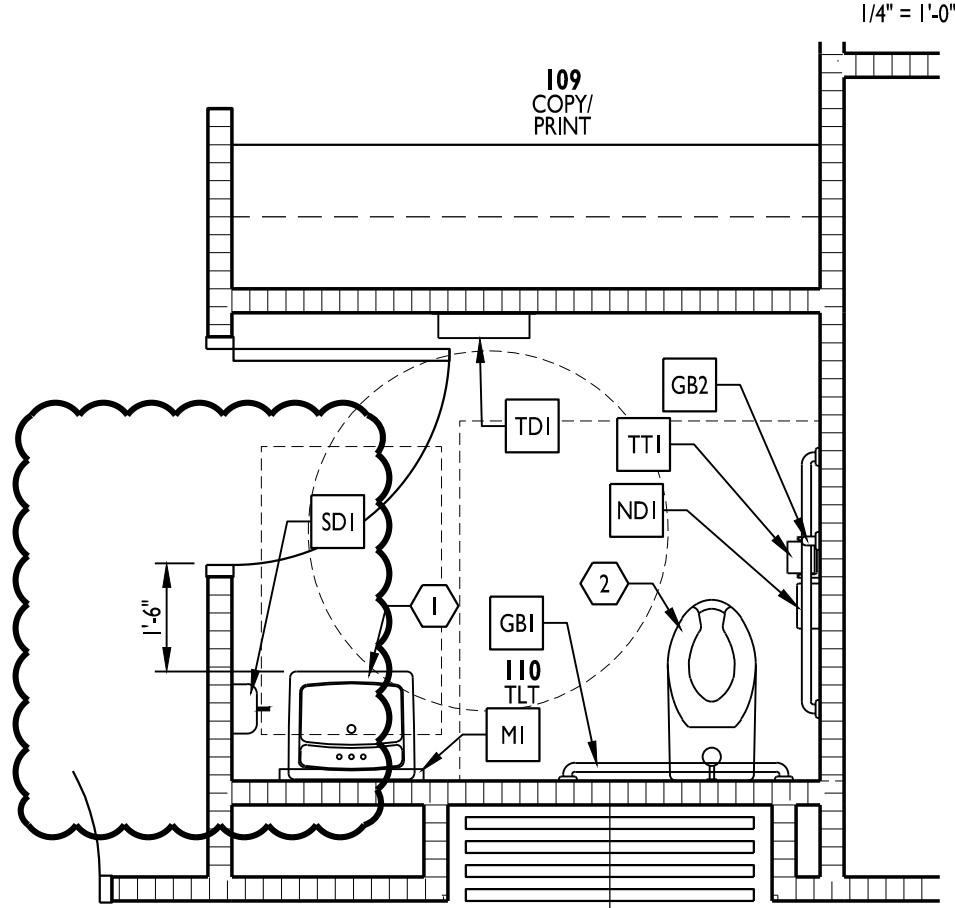


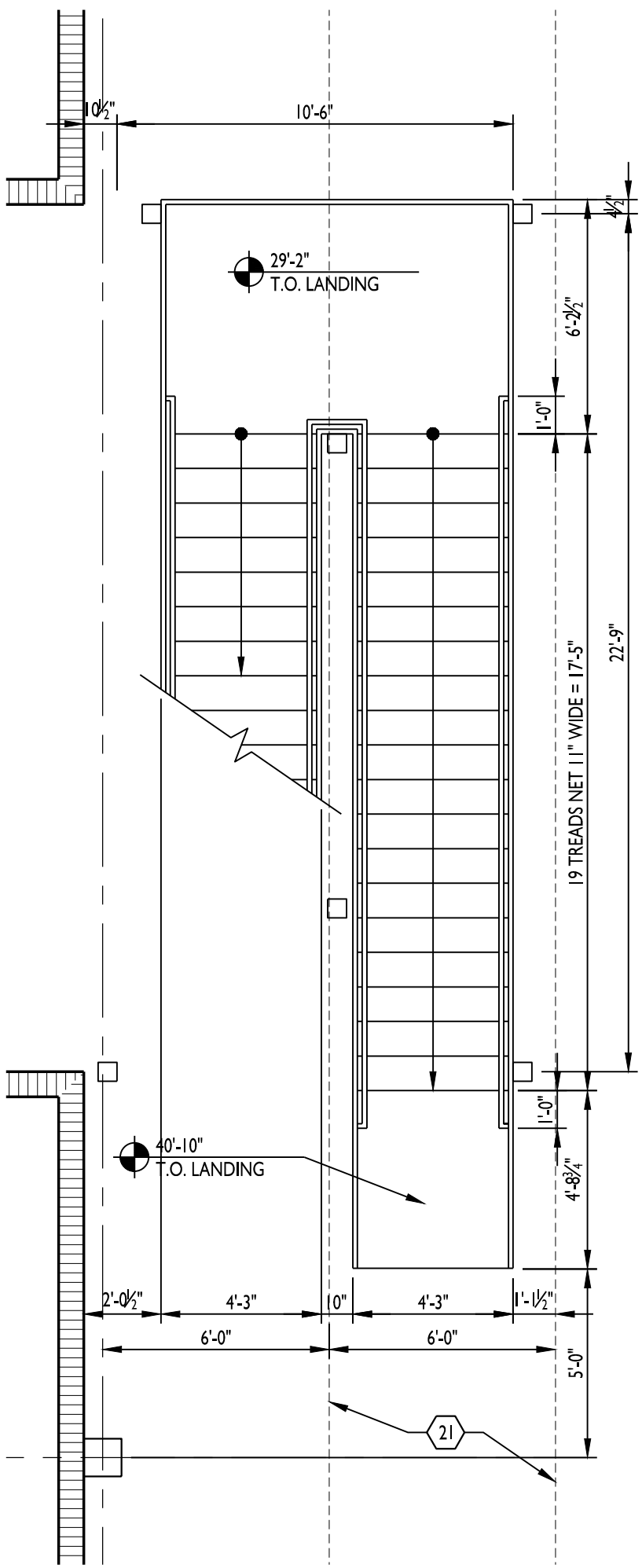
| TOILET ACCESSORY SCHEDULE |        |                                       |   |
|---------------------------|--------|---------------------------------------|---|
| MARK                      | SYMBOL | MFR #                                 | DESCRIPTION   |
| TT1                       |        | BOBRICK<br>B-2888                     | MULTI-ROLL TOILET TISSUE DISPENSER  |
| GB1                       |        | BOBRICK<br>B-5806 X 36<br>B-5806 X 42 | 36" AND 42" GRAB BARS   |
| GB2                       |        | BOBRICK<br>B-5806 X 18                | 18" VERTICAL GRAB BAR   |
| M1                        |        | BOBRICK<br>B-165                      | MIRROR 2'-0" X 4'-0"  |
| TD1                       |        | BOBRICK<br>B-3944                     | TOWEL DISPENSER / WASTE RECEPTACLE  |
| SD1                       |        | BOBRICK<br>B-2112                     | SOAP DISPENSER  |
| ND1                       |        | BOBRICK<br>B-353<br>B-270             | B-353: SANITARY NAPKIN DISPOSAL UNIT AT GWB LOCATIONS<br>B-270: SURFACE MOUNT SANITARY NAPKIN DISPOSAL UNIT AT PARTITIONS |
| TPI                       |        | GENERAL<br>PARTITION                  | TOILET PARTITION AND/OR URINAL SCREEN POWDER COATED URINAL<br>SCREEN BOTTOM 12" FROM FLOOR AND TOP 60" MAX FROM FLOOR     |



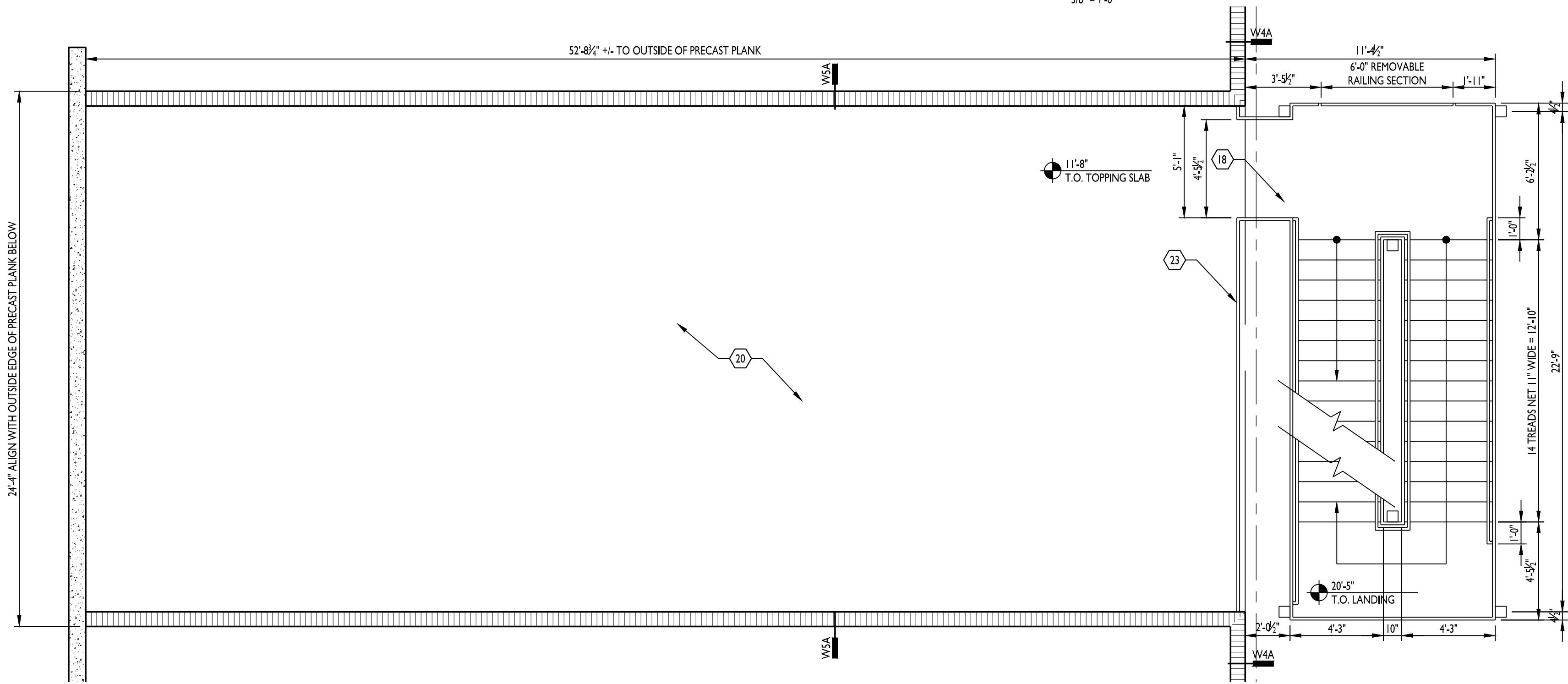
ENLARGED RESTROOM PLAN 1



ENLARGED RESTROOM PLAN 2



UPPER STAIR PLAN 4



MEZZANINE PLAN 3

## GENERAL NOTES

- CONTRACTOR SHALL BE RESPONSIBLE FOR VERIFICATION OF ALL DIMENSIONS AND JOB CONDITIONS. ANY DEVIATION FROM WHAT IS NOTED IN DRAWINGS SHALL BE BROUGHT TO THE ATTENTION OF THE ARCHITECT IMMEDIATELY.
- ALL DIMENSIONS SHOWN ARE FACE OF BRICK, MASONRY OR METAL STUD FRAMING, UNLESS OTHERWISE NOTED.
- PROVIDE DEEP LEG DEFLECTION TRACK AT ALL METAL STUD CONNECTIONS WITH STRUCTURE ABOVE, TYPICAL.
- PROVIDE FIRE RATED WOOD BLOCKING IN METAL STUD WALLS FOR ANY WALL SUPPORTED ITEMS.
- PROVIDE APPROVED FIRE RATED STOPPING MATERIALS IN ANY OPENINGS IN FIRE RATED ASSEMBLIES.
- REFER TO DOOR AND WINDOW SCHEDULES FOR ALL MATERIALS, FINISHES, AND HARDWARE INFORMATION.
- REFER TO EXTERIOR ELEVATIONS FOR ALL BRICK, MASONRY, AND OTHER EXPANSION JOINT LOCATIONS.
- ALL MATERIALS LOCATED IN CEILING PLENUM SHALL BE RATED FOR SUCH INSTALLATION OR PROTECTED TO PROVIDE COMPLIANCE. THIS INCLUDES BUT IS NOT LIMITED TO INSULATION (FHC 25/50) POWER AND LOW VOLTAGE WIRING, TELECOMMUNICATIONS CABLING, PLUMBING SUPPLY AND DRAIN LINES AND SUPPORTING BRACKETS AND/OR BLOCKING FOR CEILING HUNG ITEMS.
- PRIOR TO ORDERING ANY PRODUCTS, CONTRACTOR SHALL SUBMIT SAMPLES TO THE ARCHITECT OF ALL FINISH MATERIALS TO BE USED ON THE PROJECT. THE CONTRACTOR SHALL BEAR SOLE RESPONSIBILITY FOR ANY MATERIALS ORDERED INCORRECTLY WHEN THAT MATERIAL WAS NOT REVIEWED BY THE ARCHITECT.
- PROVIDE CONCRETE FILLED STEEL PIPE BOLLARDS AT ALL REQUIRED UTILITY EQUIPMENT LOCATIONS SUCH AS GAS METERS, ELECTRICAL TRANSFORMER PANELS, ETC. COORDINATE WITH UTILITY COMPANY AND CONTRACTORS, WHEN APPLICABLE, FOR NECESSARY LOCATIONS. REFER TO CIVIL DRAWINGS FOR BOLLARD SPECIFICATIONS AND ADDITIONAL INFORMATION.
- ALL DOORS, UNLESS OTHERWISE NOTED, TO HAVE HINGE SIDE SET 4" FROM CORNER SHOWN TO OUTSIDE OF FRAME.
- UNLESS SPECIFIED ELSEWHERE, ALL INTERIOR SLABS AND SLAB INFILLS TO BE FF-50/FL-25 OVERALL AND FF-35/FL-25 LOCAL.
- ALL EXIT DOORS TO HAVE TACTILE EXIT SIGNAGE PER 703.4 OF THE ANSI 117.1 2009.

## KEYED NOTES

- ADA COMPLIANT WALL MOUNTED LAVATORY. PROVIDE SCALD GUARDS ON SUPPLY / WASTE LINE. REFER TO PLUMBING DWGS. SEE TYPICAL ACCESSIBILITY DETAILS FOR ACCESSIBLE MOUNTING INFORMATION.
- ADA COMPLIANT WALL MOUNT FLUSH VALVE TOILET. REFER TO PLUMBING DWGS. SEE TYPICAL ACCESSIBILITY DETAILS FOR ACCESSIBLE MOUNTING INFORMATION.
- ADA COMPLIANT WALL MOUNTED URINAL W/ FLUSH VALVE CONTROL. CENTER IN WIDTH OF STALL. REFER TO PLUMBING DRAWINGS. SEE TYPICAL ACCESSIBILITY DETAILS FOR ACCESSIBLE MOUNTING INFORMATION.
- STANDARD HEIGHT WALL MOUNT FLUSH VALVE TOILET. CENTER IN WIDTH OF STALL.
- STANDARD HEIGHT URINAL. CENTER IN WIDTH OF PARTITIONS (OR WALL).
- WALL MOUNTED LAVATORY. MATCH HEIGHT OF ADA LAVATORIES.
- ADA COMPLIANT H-L-O WATER FOUNTAIN.
- ALIGN FINISH FACE OF WALL, BOTH SIDES.
- WASHER & DRYER.
- 8'-0" TALL GALVANIZE D FENCE. PROVIDE GATE PER DETAIL 4/A504.
- PLASTIC LAMINATE 12" WIDE COUNTER. CENTER ON WIDTH OF WALL.
- PASS THRU CABINET W/ DOORS ON BOTH SIDES SEE 6/A504. CENTER ON WIDTH OF WALL.
- MODERN FOLD PAIRED PANEL PARTITION W/ VINYL FACE, MIN 51 STC RATING. COORDINATE ALCOVE DIMENSIONS W/ SUPPLIER.
- PROVIDE FR BLOCKING FOR TENANT PROVIDED TV.
- STRUCTURAL STEEL COLUMN.
- HALF HEIGHT LOCKERS 12" x 12" w/ 4" CURB & SLOPED TOP. PROVIDE 2 ADA COMPLIANT LOCKERS IN EACH ROOM.
- WALL MOUNT SHELF. REFER TO 5/A504.
- STEEL STAIRS. PAINT SAFETY YELLOW. REFER TO 1/A505.
- 2' x 2' MOP SINK w/ WALL MOUNT FAUCET.
- PRECAST PLANK ON CMU WALL WITH TOPPING SLAB. TOP OF SLAB AT 11'-8" AFF. REFER TO STRUCTURAL DRAWINGS.
- BAR JOIST ROOF FRAMING ABOVE. COORDINATE WITH STRUCTURAL DRAWINGS.
- ALIGN FINISH FACE OF GYP BOARD WITH FACE OF CMU WALL.
- 1 1/2" DIA 42" TALL STEEL GUARDRAIL WITH VERTICAL PICKETS AT 4" OC MAX. PAINTED SAFETY YELLOW. ANCHOR INTO PRECAST PLANK. REFER TO 2/A505.
- 4" TALL CMU WALL WITH BULLNOSE TOP AND OUTER EDGES. PAINT WITH EPOXY PAINT.
- FLOOR SLAB TO SLOPE TO CATCH BASIN. REFER TO PLUMBING DRAWINGS FOR WATER SUPPLY AND DRAIN.
- PROVIDE INSULATED STEEL DOOR AT PENTHOUSE, FACING SOUTH. DOOR #200 ON SCHEDULE.



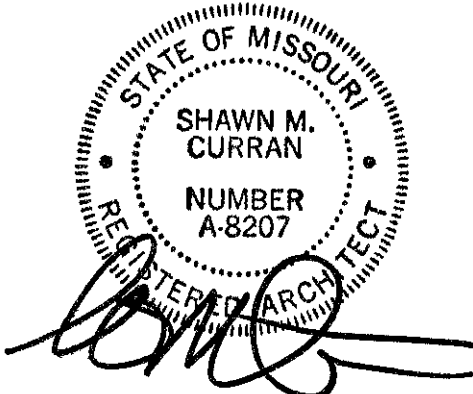
**CURRAN**  
ARCHITECTURE

5719 LAWTON LOOP E. DR. #212  
INDIANAPOLIS, IN 46216  
O :: 317 . 288 . 0681  
F :: 317 . 288 . 0753



**SCANNELL**  
PROPERTIES

## CERTIFICATION



THIS DRAWING AND THE IDEAS, DESIGNS AND CONCEPTS CONTAINED HEREIN ARE THE EXCLUSIVE INTELLECTUAL PROPERTY OF CURRAN ARCHITECTURE, AND ARE NOT TO BE USED OR REPRODUCED, WHOLE OR IN PART, WITHOUT THE WRITTEN CONSENT OF CURRAN ARCHITECTURE. © COPYRIGHT 2021, CURRAN ARCHITECTURE

## PROJECT INFORMATION

LEE'S SUMMIT LOGISTICS  
BUILDING A LOT I

NW CORNER OF  
NE TUDOR RD & MAIN ST  
LEE'S SUMMIT, MO 64086

## ISSUE DATES

|                 |          |
|-----------------|----------|
| PERMIT SET      | 02.18.22 |
| PERMIT COMMENTS | 10.24.22 |

210300

ENLARGED  
FLOOR PLANS

**AIII**