



RELEASE FOR CONSTRUCTION  
AS NOTED ON PLANS REVIEW  
DEVELOPMENT SERVICES  
LEE'S SUMMIT, MISSOURI  
10/20/2022 11:32:00

MiTek USA, Inc.  
16023 Swingley Ridge Rd  
Chesterfield, MO 63017  
314-434-1200

Re: 3016791  
SUMMIT/STONE CREEK #95/MO

The truss drawing(s) referenced below have been prepared by MiTek USA, Inc. under my direct supervision based on the parameters provided by Builders FirstSource (Valley Center).

Pages or sheets covered by this seal: I53795203 thru I53795204

My license renewal date for the state of Missouri is December 31, 2023.

Missouri COA: Engineering 001193



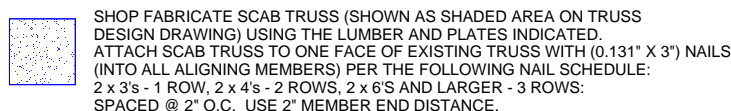
August 23, 2022

Sevier, Scott, Engineer

**IMPORTANT NOTE:** The seal on these truss component designs is a certification that the engineer named is licensed in the jurisdiction(s) identified and that the designs comply with ANSI/TPI 1. These designs are based upon parameters shown (e.g., loads, supports, dimensions, shapes and design codes), which were given to MiTek or TRENCO. Any project specific information included is for MiTek's or TRENCO's customers file reference purpose only, and was not taken into account in the preparation of these designs. MiTek or TRENCO has not independently verified the applicability of the design parameters or the designs for any particular building. Before use, the building designer should verify applicability of design parameters and properly incorporate these designs into the overall building design per ANSI/TPI 1, Chapter 2.

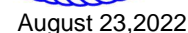
Builders First Source, Valley Center, KS 67147

8.530 s May 26 2022 MiTek Industries, Inc. Tue Aug 23 10:19:29 2022 Page  
ID:pEI2tSn6CAFSbWVqXhMizCDRM-E8MpWDRcN28V35rJNRC9fKqwwtbci7R05QA67yI25v



**NOTES-**

- 1) Unbalanced roof live loads have been considered for this design.
- 2) Wind: ASCE 7-16; Vult=115mph (3-second gust) Vasd=91mph; TCdL=6.0psf; BCDL=4.2psf; h=25ft; Cat. II; Exp C; Enclosed; MWFRS (envelope) gable end zone and C-C Exterior(2E) -1-10-8 to 2-2-14, Interior(1) 2-2-14 to 15-2-8, Exterior(2R) 15-2-8 to 21-2-0, Interior(1) 21-2-0 to 27-1-8, Exterior(2R) 27-1-8 to 32-11-6, Interior(1) 32-11-6 to 41-0-4 zone; cantilever left and right exposed ; end vertical left and right exposed; C-C for members and forces & MWFRS for reactions shown; Lumber DOL=1.60 plate grip DOL=1.60
- 3) Provide adequate drainage to prevent water ponding.
- 4) n/a
- 5) This truss has been designed for a 10.0 psf bottom chord live load nonconcurrent with any other live loads.
- 6) Bearing at joint(s) 31 considers parallel to grain value using ANSI/TPI 1 angle to grain formula. Building designer should verify capacity of bearing surface.
- 7) Provide mechanical connection (by others) of truss to bearing plate capable of withstanding 70 lb uplift at joint 21, 278 lb uplift at joint 10 and 355 lb uplift at joint 31.
- 8) This truss is designed in accordance with the 2018 International Residential Code sections R502.11.1 and R802.10.2 and referenced



**WARNING - Verify design parameters and READ NOTES ON THIS AND INCLUDED MITEK REFERENCE PAGE MII-7473 rev. 5/19/2020 BEFORE USE.**

Design valid for use only with MiteTek® connectors. This design is based only upon parameters shown, and is for an individual building component, not a truss system. Before use, the building designer must verify the applicability of design parameters and properly incorporate this design into the overall building design. Bracing indicated is to prevent buckling of individual truss web and/or chord members only. Additional temporary and permanent bracing is always required for stability and to prevent collapse with possible personal injury and property damage. For general guidance regarding the fabrication, storage, delivery, erection and bracing of trusses and truss systems, see **ANSI/TPH Quality Criteria, DSB-89 and BCSI Building Components**

**Safety Information:** available from Truss Plate Institute, 2670 Crain Highway, Suite 203 Waldorf, MD 20601.



16023 Swingley Ridge Rd  
Chesterfield, MO 63017

Job	Truss	Truss Type	Qty	Ply	SUMMIT/STONE CREEK #95/MO	I53795203
3016791	A5	Piggyback Base	2	1	Job Reference (optional)	

Builders First Source, Valley Center, KS 67147

8.530 s May 26 2022 MiTek Industries, Inc. Tue Aug 23 10:19:29 2022 Page 2  
ID:pEI2tSnelCAFSbWVgXHdMlzCDRM-E8MpWDRcN28V35rJNRC9fKgvwtbcfj7R05QA67yl?5y

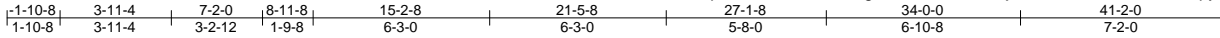
- NOTES-**
- 9) This truss design requires that a minimum of 7/16" structural wood sheathing be applied directly to the top chord and 1/2" gypsum sheetrock be applied directly to the bottom chord.
  - 10) Graphical purlin representation does not depict the size or the orientation of the purlin along the top and/or bottom chord.

Job	Truss	Truss Type	Qty	Ply	SUMMIT/STONEY CREEK #95/MO	I53795204
3016791	A6	Piggyback Base	2	1		

Builders FirstSource (Valley Center), Valley Center, KS - 67147,

8.530 s Dec 6 2021 MiTek Industries, Inc. Mon Aug 22 15:04:10 2022 Page 1

ID:pEI2tSnelCAFSbWVgXHdMzCDRM-1dJP?A\_c6PEso05f7UklicBnpy3rb1Zl8wEceSylG13



REPAIR: MODIFY PROFILE AS SHOWN

6.00 12

7x8 =

2x4 ||

5x8 =

Scale = 1:81.6

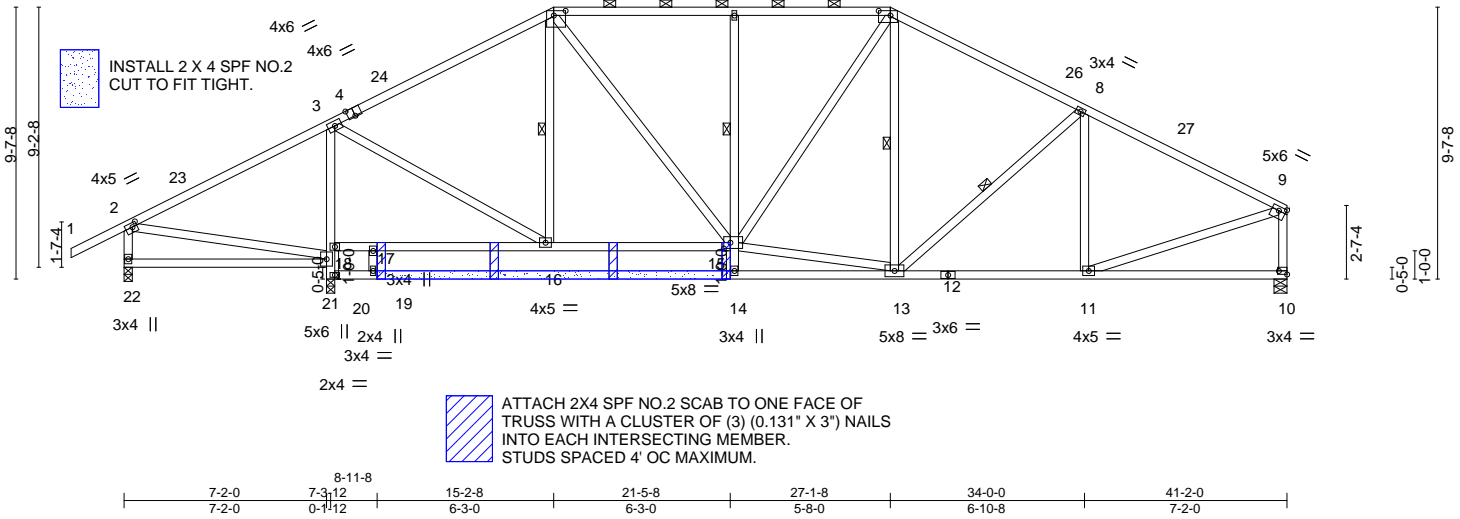


Plate Offsets (X,Y)-- [2:0-2-0,0-1-12], [4:0-3-0,Edge], [5:0-5-0,0-2-0], [7:0-5-0,0-2-0], [9:Edge,0-1-12], [10:Edge,0-1-8], [15:0-2-12,0-2-8]									
<b>LOADING</b> (psf)		<b>SPACING-</b> 2-0-0		<b>CSI.</b>		<b>DEFL.</b> in (loc) l/defl L/d		<b>PLATES</b>	<b>GRIP</b>
TCLL	25.0	Plate Grip DOL	1.15	TC	0.60	Vert(LL)	-0.08 6 >999 240	MT20	197/144
TCDL	10.0	Lumber DOL	1.15	BC	0.69	Vert(CT)	-0.16 15-16 >999 180		
BCLL	0.0	Rep Stress Incr	YES	WB	0.35	Horz(CT)	0.04 10 n/a n/a		
BCDL	10.0	Code IRC2018/TPI2014		Matrix-AS				Weight: 213 lb	FT = 20%

#### LUMBER-

TOP CHORD 2x4 SPF No.2  
BOT CHORD 2x4 SPF No.2  
WEBS 2x4 SPF No.2

#### BRACING-

TOP CHORD Structural wood sheathing directly applied, except end verticals, and 2-0-0 oc purlins (4-5-3 max.): 5-7.  
BOT CHORD Rigid ceiling directly applied. Except:  
WEBS 1 Row at midpt 6-15  
1 Row at midpt 5-16, 7-13, 8-13

#### REACTIONS.

(size) 22=0-3-8, 10=0-5-8, 20=0-3-8  
Max Horz 22=197(LC 11)  
Max Uplift 22=84(LC 12), 10=281(LC 13), 20=337(LC 12)  
Max Grav 22=323(LC 25), 10=1476(LC 1), 20=2054(LC 1)

#### FORCES. (lb) - Max. Comp./Max. Ten. - All forces 250 (lb) or less except when shown.

TOP CHORD 2-3=-69/338, 3-5=-1251/319, 5-6=-1432/394, 6-7=-1425/392, 7-8=-1569/382,  
8-9=-1724/344, 2-22=-256/213, 9-10=-1406/305  
BOT CHORD 20-21=-1995/354, 18-21=-1866/362, 3-18=-1834/378, 15-16=-152/1007, 6-15=-450/191,  
11-13=-259/1454  
WEBS 3-16=-121/1353, 5-16=-527/122, 5-15=-173/775, 13-15=-151/1249, 7-15=-133/377,  
8-11=-321/137, 9-11=-227/1435, 2-21=-315/126

#### NOTES-

- Unbalanced roof live loads have been considered for this design.
- Wind: ASCE 7-16; Vult=115mph (3-second gust) Vasd=91mph; TCDL=6.0psf; BCDL=4.2psf; h=25ft; Cat. II; Exp C; Enclosed; MWFRS (envelope) gable end zone and C-C Exterior(2E) -1-10-8 to 2-2-14, Interior(1) 2-2-14 to 15-2-8, Exterior(2R) 15-2-8 to 21-0-6, Interior(1) 21-0-6 to 27-1-8, Exterior(2R) 27-1-8 to 32-11-6, Interior(1) 32-11-6 to 41-0-4 zone; cantilever left and right exposed; end vertical left and right exposed; C-C for members and forces & MWFRS for reactions shown; Lumber DOL=1.60 plate grip DOL=1.60
- Provide adequate drainage to prevent water ponding.
- This truss has been designed for a 10.0 psf bottom chord live load nonconcurrent with any other live loads.
- Bearing at joint(s) 20 considers parallel to grain value using ANSI/TPI 1 angle to grain formula. Building designer should verify capacity of bearing surface.
- Provide mechanical connection (by others) of truss to bearing plate capable of withstanding 84 lb uplift at joint 22, 281 lb uplift at joint 10 and 337 lb uplift at joint 20.
- This truss is designed in accordance with the 2018 International Residential Code sections R502.11.1 and R802.10.2 and referenced standard ANSI/TPI 1.
- This truss design requires that a minimum of 7/16" structural wood sheathing be applied directly to the top chord and 1/2" gypsum sheetrock be applied directly to the bottom chord.
- Graphical purlin representation does not depict the size or the orientation of the purlin along the top and/or bottom chord.



August 23, 2022

**WARNING - Verify design parameters and READ NOTES ON THIS AND INCLUDED MITEK REFERENCE PAGE MII-7473 rev. 5/19/2020 BEFORE USE.**

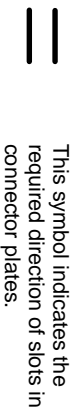
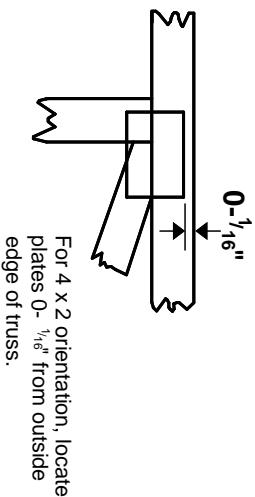
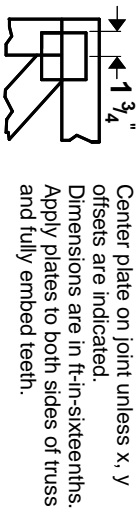
Design valid for use only with MiTek® connectors. This design is based only upon parameters shown, and is for an individual building component, not a truss system. Before use, the building designer must verify the applicability of design parameters and properly incorporate this design into the overall building design. Bracing indicated is to prevent buckling of individual truss web and/or chord members only. Additional temporary and permanent bracing is always required for stability and to prevent collapse with possible personal injury and property damage. For general guidance regarding the fabrication, storage, delivery, erection and bracing of trusses and truss systems, see **ANSI/TPI1 Quality Criteria, DSB-89 and BCSI Building Component Safety Information** available from Truss Plate Institute, 2670 Crain Highway, Suite 203 Waldorf, MD 20601



16023 Swingley Ridge Rd  
Chesterfield, MO 63017

# Symbols

## PLATE LOCATION AND ORIENTATION



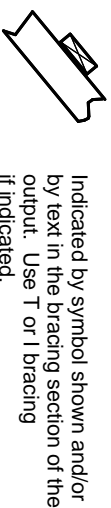
\* Plate location details available in **MiTek 20/20** software or upon request.

## PLATE SIZE

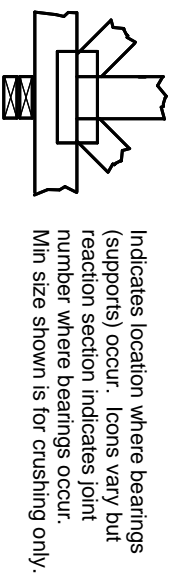
**4 X 4**

The first dimension is the plate width measured perpendicular to slots. Second dimension is the length parallel to slots.

## LATERAL BRACING LOCATION

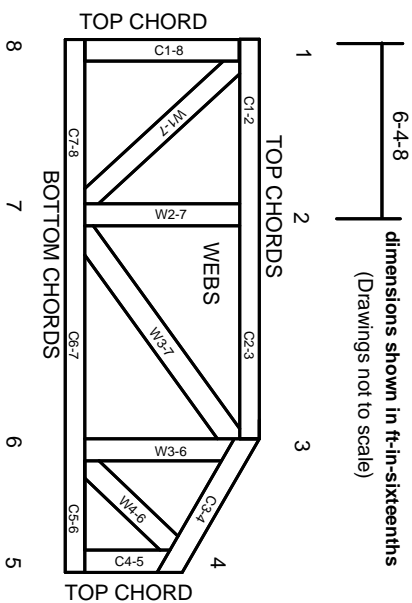


## BEARING



**Industry Standards:**  
ANSI/TPI 1: National Design Specification for Metal Plate Connected Wood Truss Construction.  
DSB-89: Building Component Safety Information, Guide to Good Practice for Handling, Installing & Bracing of Metal Plate Connected Wood Trusses.

# Numbering System



**JOINTS ARE GENERALLY NUMBERED/LETTERED CLOCKWISE AROUND THE TRUSS STARTING AT THE JOINT FARTHEST TO THE LEFT.**

**CHORDS AND WEBS ARE IDENTIFIED BY END JOINT NUMBERS/LETTERS.**

## PRODUCT CODE APPROVALS

ICC-ES Reports:  
ESR-1311, ESR-1352, ESR1988  
ER-3907, ESR-2362, ESR-1397, ESR-3282

Trusses are designed for wind loads in the plane of the truss unless otherwise shown.

Lumber design values are in accordance with ANSI/TPI 1 section 6.3 These truss designs rely on lumber values established by others.

© 2012 MiTek® All Rights Reserved



MiTek Engineering Reference Sheet: MII-7473 rev. 5/19/2020



# General Safety Notes

**Failure to Follow Could Cause Property Damage or Personal Injury**

1. Additional stability bracing for truss system, e.g. diagonal or X-bracing, is always required. See BCSI.
2. Truss bracing must be designed by an engineer. For wide truss spacing, individual lateral braces themselves may require bracing, or alternative Tor I bracing should be considered.
3. Never exceed the design loading shown and never stack materials on inadequately braced trusses.
4. Provide copies of this truss design to the building designer, erection supervisor, property owner and all other interested parties.
5. Cut members to bear tightly against each other.
6. Place plates on each face of truss at each joint and embed fully. Knots and wane at joint locations are regulated by ANSI/TPI 1.
7. Design assumes trusses will be suitably protected from the environment in accord with ANSI/TPI 1.
8. Unless otherwise noted, moisture content of lumber shall not exceed 19% at time of fabrication.
9. Unless expressly noted, this design is not applicable for use with fire retardant, preservative treated, or green lumber.
10. Camber is a non-structural consideration and is the responsibility of truss fabricator. General practice is to camber for dead load deflection.
11. Plate type, size, orientation and location dimensions indicated are minimum plating requirements.
12. Lumber used shall be of the species and size, and in all respects, equal to or better than that specified.
13. Top chords must be sheathed or purlins provided at spacing indicated on design.
14. Bottom chords require lateral bracing at 10 ft. spacing, or less, if no ceiling is installed, unless otherwise noted.
15. Connections not shown are the responsibility of others.
16. Do not cut or alter truss member or plate without prior approval of an engineer.
17. Install and load vertically unless indicated otherwise.
18. Use of green or treated lumber may pose unacceptable environmental, health or performance risks. Consult with project engineer before use.
19. Review all portions of this design (front, back, words and pictures) before use. Reviewing pictures alone is not sufficient.
20. Design assumes manufacture in accordance with ANSI/TPI 1 Quality Criteria.
21. The design does not take into account any dynamic or other loads other than those expressly stated.