



RELEASE FOR CONSTRUCTION
AS NOTED ON PLANS REVIEW
DEVELOPMENT SERVICES
LEE'S SUMMIT, MISSOURI
10/20/2022 11:31:06

MiTek USA, Inc.
16023 Swingley Ridge Rd
Chesterfield, MO 63017
314-434-1200

Re: 3016791
SUMMIT/STONEY CREEK #95/MO

The truss drawing(s) referenced below have been prepared by MiTek USA, Inc. under my direct supervision based on the parameters provided by Builders FirstSource (Valley Center).

Pages or sheets covered by this seal: I54763833 thru I54763833

My license renewal date for the state of Missouri is December 31, 2023.

Missouri COA: Engineering 001193



Scott Sevier

October 18, 2022

Sevier, Scott ,Engineer

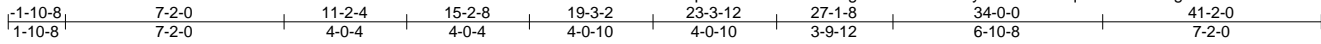
IMPORTANT NOTE: The seal on these truss component designs is a certification that the engineer named is licensed in the jurisdiction(s) identified and that the designs comply with ANSI/TPI 1. These designs are based upon parameters shown (e.g., loads, supports, dimensions, shapes and design codes), which were given to MiTek or TRENCO. Any project specific information included is for MiTek's or TRENCO's customers file reference purpose only, and was not taken into account in the preparation of these designs. MiTek or TRENCO has not independently verified the applicability of the design parameters or the designs for any particular building. Before use, the building designer should verify applicability of design parameters and properly incorporate these designs into the overall building design per ANSI/TPI 1, Chapter 2.

Job 3016791	Truss A7	Truss Type Piggyback Base	Qty 2	Ply 1	SUMMIT/STONE CREEK #95/MO 154763833
----------------	-------------	------------------------------	----------	----------	--

Builders FirstSource (Valley Center), Valley Center, KS - 67147,

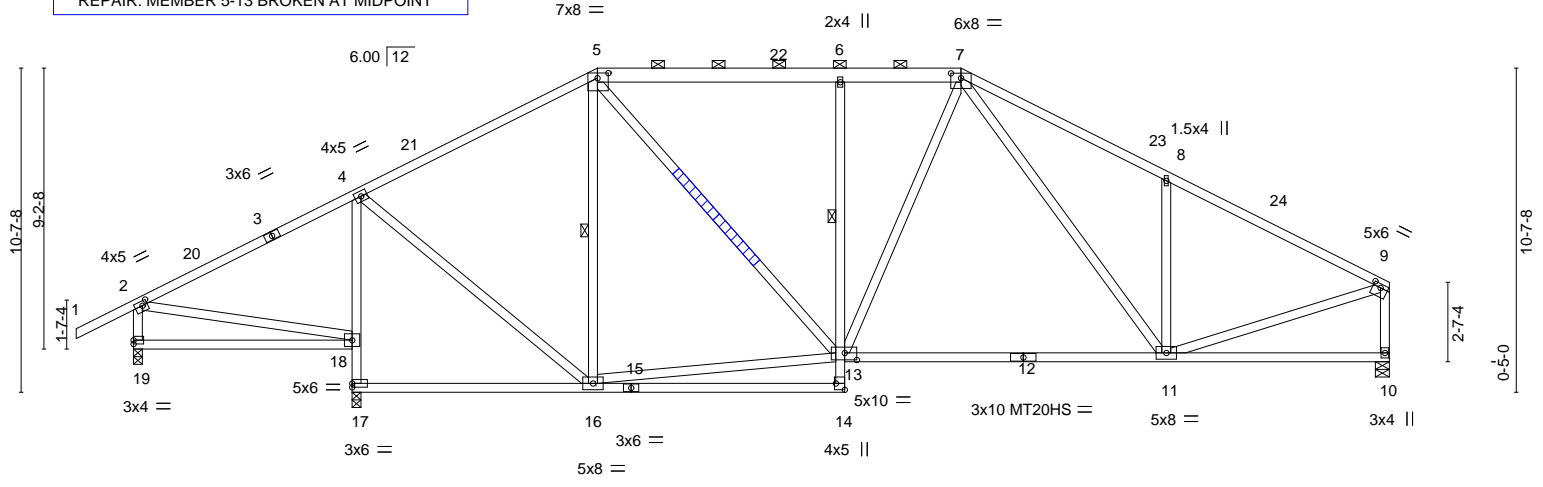
8.530 s Aug 11 2022 MiTek Industries, Inc. Mon Oct 17 16:35:01 2022 Page 1

ID:pEI2tSnelCAFSbVWVgXHdMlzCDRM-yHEXdG?N1qwi48ZNDcJSg7med5dmDDA6cBjgV7ySSLu



REPAIR: MEMBER 5-13 BROKEN AT MIDPOINT

Scale = 1:75.5



APPLY 2 X 4 X 4' SPF NO.2 SCAB(S) TO EACH FACE OF TRUSS CENTERED ON DAMAGE/SPLICE. ATTACH WITH (0.131" X 3") NAILS PER THE FOLLOWING NAIL SCHEDULE: 2 x 3'S - 1 ROW, 2 x 4'S - 2 ROWS, 2 x 6'S AND LARGER - 3 ROWS: SPACED @ 4" O.C. STAGGER NAIL SPACING FROM FRONT FACE AND BACK FACE FOR A NET 2" O.C SPACING IN THE TRUSS. USE 2" MEMBER END DISTANCE.

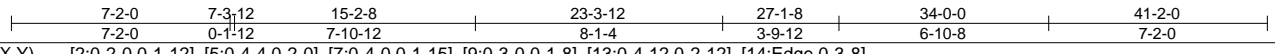


Plate Offsets (X,Y)-- [2:0-2-0,0-1-12], [5:0-4-4,0-2-0], [7:0-4-0,0-1-15], [9:0-3-0,0-1-8], [13:0-4-12,0-2-12], [14:Edge,0-3-8]

LOADING (psf)	SPACING-	2-0-0	CSI.	DEFL.	in (loc)	l/defl	L/d	PLATES	GRIP
TCLL 25.0	Plate Grip DOL	1.15	TC 0.57	Vert(LL)	-0.30 11-13	>999	240	MT20	197/144
TCDL 10.0	Lumber DOL	1.15	BC 0.83	Vert(CT)	-0.63 11-13	>640	180	MT20HS	148/108
BCLL 0.0	Rep Stress Incr	YES	WB 0.43	Horz(CT)	0.03 10	n/a	n/a		
BCDL 10.0	Code IRC2018/TPI2014		Matrix-AS						
								Weight: 222 lb	FT = 20%

LUMBER-	BRACING-
TOP CHORD 2x4 SPF No.2 *Except* 5-7: 2x6 SPF No.2	TOP CHORD Structural wood sheathing directly applied, except end verticals, and 2-0-0 oc purlins (5-6-13 max.): 5-7.
BOT CHORD 2x4 SPF No.2	BOT CHORD Rigid ceiling directly applied. Except: 1 Row at midpt 6-13
WEBS 2x4 SPF No.2	WEBS 1 Row at midpt 5-16

REACTIONS. (size) 19=0-3-8, 17=0-3-8, 10=0-5-8
 Max Horz 19=197(LC 11)
 Max Uplift 19=91(LC 8), 17=361(LC 12), 10=287(LC 13)
 Max Grav 19=423(LC 25), 17=1900(LC 1), 10=1503(LC 1)

FORCES. (lb) - Max. Comp./Max. Ten. - All forces 250 (lb) or less except when shown.
 TOP CHORD 4-5=-1109/334, 5-6=-1391/403, 6-7=-1395/400, 7-8=-1799/517, 8-9=-1783/346,
 2-19=-354/246, 9-10=-1447/306
 BOT CHORD 17-18=-1832/388, 4-18=-1735/390, 6-13=-513/216, 11-13=-161/1312
 WEBS 5-16=-671/163, 8-11=-536/302, 9-11=-218/1490, 4-16=-121/1145, 7-11=-178/348,
 7-13=-100/390, 13-16=-81/907, 5-13=-166/828

NOTES-

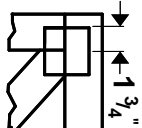
- 1) Unbalanced roof live loads have been considered for this design.
- 2) Wind: ASCE 7-16; Vult=115mph (3-second gust) Vasd=91mph; TCDL=6.0psf; BCDL=4.2psf; h=25ft; Cat. II; Exp C; Enclosed; MWFRS (envelope) gable end zone and C-C Exterior(2E) -1-10-8 to 2-2-14, Interior(1) 2-2-14 to 15-2-8, Exterior(2R) 15-2-8 to 21-0-6, Interior(1) 21-0-6 to 27-1-8, Exterior(2R) 27-1-8 to 32-11-6, Interior(1) 32-11-6 to 41-0-4 zone; cantilever left and right exposed ; end vertical left and right exposed;C-C for members and forces & MWFRS for reactions shown; Lumber DOL=1.60 grip DOL=1.60
- 3) Provide adequate drainage to prevent water ponding.
- 4) All plates are MT20 plates unless otherwise indicated.
- 5) This truss has been designed for a 10.0 psf bottom chord live load nonconcurrent with any other live loads.
- 6) Provide mechanical connection (by others) of truss to bearing plate capable of withstanding 91 lb uplift at joint 19, 361 lb uplift at joint 17 and 287 lb uplift at joint 10.
- 7) This truss is designed in accordance with the 2018 International Residential Code sections R502.11.1 and R802.10.2 and referenced standard ANSI/TPI 1.
- 8) This truss design requires that a minimum of 7/16" structural wood sheathing be applied directly to the top chord and 1/2" gypsum sheetrock be applied directly to the bottom chord.
- 9) Graphical purlin representation does not depict the size or the orientation of the purlin along the top and/or bottom chord.



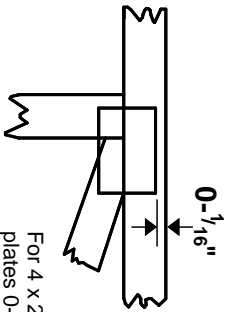
October 18, 2022

Symbols

PLATE LOCATION AND ORIENTATION



Center plate on joint unless x, y offsets are indicated. Dimensions are in ft-in-sixteenths. Apply plates to both sides of truss and fully embed teeth.



For 4 x 2 orientation, locate plates 0- 1/16" from outside edge of truss.



This symbol indicates the required direction of slots in connector plates.

* Plate location details available in **MITek 20/20 software** or upon request.

PLATE SIZE

4 X 4

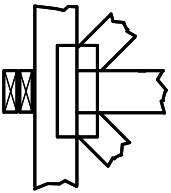
The first dimension is the plate width measured perpendicular to slots. Second dimension is the length parallel to slots.

LATERAL BRACING LOCATION



Indicated by symbol shown and/or by text in the bracing section of the output. Use T or I bracing if indicated.

BEARING



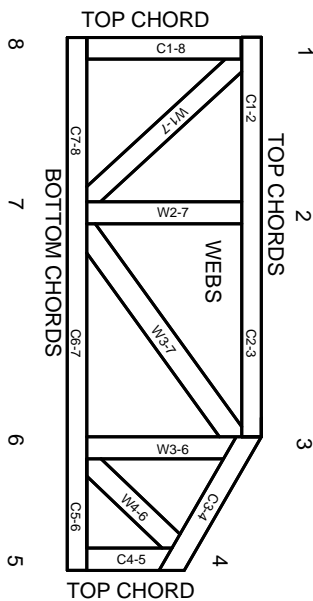
Indicates location where bearings (supports) occur. Icons vary but reaction section indicates joint number where bearings occur. Min size shown is for crushing only.

Industry Standards:

ANSI/TPI 1: National Design Specification for Metal Plate Connected Wood Truss Construction.
DSB-89: Design Standard for Bracing, Building Component Safety Information, Guide to Good Practice for Handling, Installing & Bracing of Metal Plate Connected Wood Trusses.

Numbering System

6-4-8 dimensions shown in ft-in-sixteenths (Drawings not to scale)



JOINTS ARE GENERALLY NUMBERED/LETTERED CLOCKWISE AROUND THE TRUSS STARTING AT THE JOINT FARTHEST TO THE LEFT.

CHORDS AND WEBS ARE IDENTIFIED BY END JOINT NUMBERS/LETTERS.

PRODUCT CODE APPROVALS

ICC-ES Reports:

ESR-1311, ESR-1352, ESR1988
ER-3907, ESR-2362, ESR-1397, ESR-3282

Trusses are designed for wind loads in the plane of the truss unless otherwise shown.

Lumber design values are in accordance with ANSI/TPI 1 section 6.3 These truss designs rely on lumber values established by others.

© 2012 MITek® All Rights Reserved



General Safety Notes

Failure to Follow Could Cause Property Damage or Personal Injury

1. Additional stability/bracing for truss system, e.g. diagonal or X-bracing, is always required. See BCSI.
2. Truss bracing must be designed by an engineer. For wide truss spacing, individual lateral braces themselves may require bracing, or alternative T or I bracing should be considered.
3. Never exceed the design loading shown and never stack materials on inadequately braced trusses.
4. Provide copies of this truss design to the building designer, erection supervisor, property owner and all other interested parties.
5. Cut members to bear tightly against each other.
6. Place plates on each face of truss at each joint and embed fully. Knots and wane at joint locations are regulated by ANSI/TPI 1.
7. Design assumes trusses will be suitably protected from the environment in accord with ANSI/TPI 1.
8. Unless otherwise noted, moisture content of lumber shall not exceed 19% at time of fabrication.
9. Unless expressly noted, this design is not applicable for use with fire retardant, preservative treated, or green lumber.
10. Camber is a non-structural consideration and is the responsibility of truss fabricator. General practice is to camber for dead load deflection.
11. Plate type, size, orientation and location dimensions indicated are minimum plating requirements.
12. Lumber used shall be of the species and size, and in all respects, equal to or better than that specified.
13. Top chords must be sheathed or purlins provided at spacing indicated on design.
14. Bottom chords require lateral bracing at 10 ft. spacing, or less, if no ceiling is installed, unless otherwise noted.
15. Connections not shown are the responsibility of others.
16. Do not cut or alter truss member or plate without prior approval of an engineer.
17. Install and load vertically unless indicated otherwise.
18. Use of green or treated lumber may pose unacceptable environmental, health or performance risks. Consult with project engineer before use.
19. Review all portions of this design (front, back, words and pictures) before use. Reviewing pictures alone is not sufficient.
20. Design assumes manufacture in accordance with ANSI/TPI 1 Quality Criteria.
21. The design does not take into account any dynamic or other loads other than those expressly stated.



MITek Engineering Reference Sheet: Mill-7473 rev. 5/19/2020