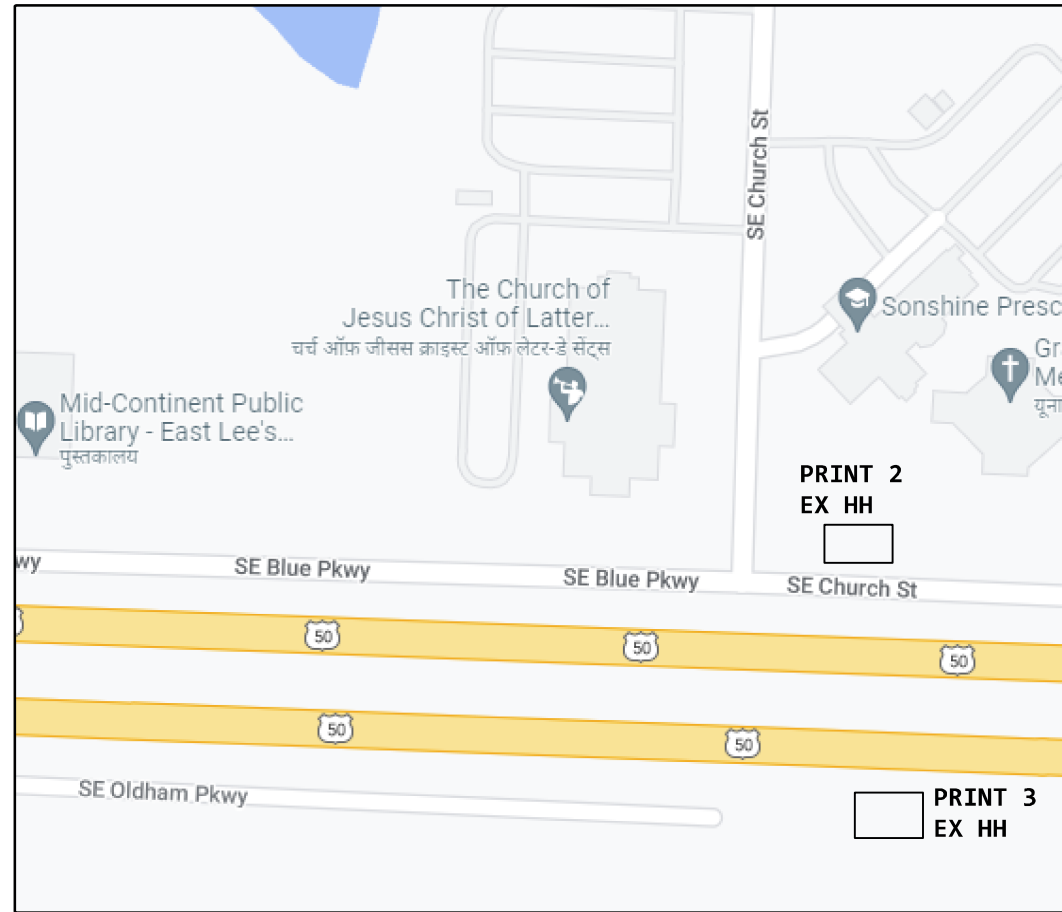
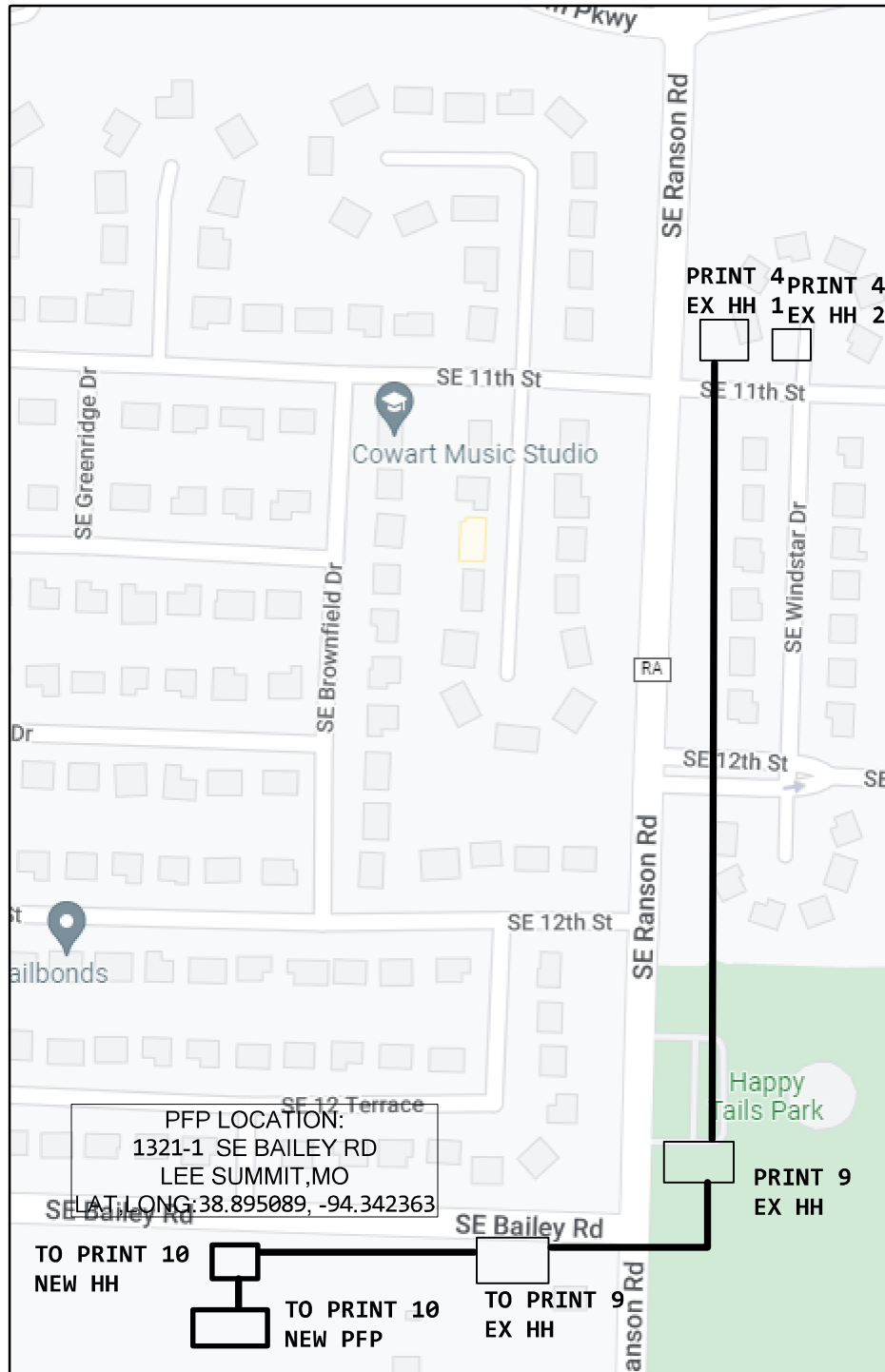


VICINITY MAP



| XGSPON Optics | | Class B+ |
|--|--|----------|
| Feeder Fiber Length (kft) from CO or Remote OLT | | 28.4 |
| Avg. Feeder Splicing Interval (kft) - This is not the number of splices | | 2.0 |
| Optitip Connectors in lieu of splices (Choose 0-2 from drop-down list) | | 2 |
| Distribution Length (kft) - PFP to FST | | 5.5 |
| Total Length | | 33.9 |
| Splitter Type | | 1x32 |
| Max. Feeder + Splitter EML - Engineered Measured Loss (dBm) for 1270 nm downstream from distribution side of PFP splitter to OSP fiber panel at OLT location (Location "Q" to "H" on Optical Budget Diagram) | | 22.8 |
| Max. Feeder + Splitter EML - Engineered Measured Loss (dBm) for 1550 nm upstream from OSP fiber panel at OLT location to distribution side of PFP splitter (Location "H" to "Q" on Optical Budget Diagram) | | 21.9 |
| Distribution F2 EML - PFP to FST for 1270nm | | 3.2 |
| Distribution F2 EML - PFP to FST for 1550nm | | 3.2 |
| Total EML OLT to FST for 1270nm | | 26.0 |
| Total EML OLT to FST for 1550nm | | 25.1 |

PFP LOCATION:
1321-1 SE BAILEY RD
LEE SUMMIT, MO
LAT/LONG: 38.895089, -94.342363

WC NAME: LEE'S SUMMIT
NPANNX: 816524
DA: 2132PA

PLEASE CONTACT BRICE DISNEY AT 805-712-1073
OR BRICE.DISNEY@PEARCE-SERVICES.COM FOR ANY
QUESTIONS OR ISSUES REGARDING THIS PROJECT

845C
ECD: 04/28/2023
1 READY FOR SERVICE TRIGGER

BEFORE YOU DIG!
2 DAYS PRIOR
CALL 811

BURY/BORE ALL CABLE AT 36" DEPTH
UNLESS OTHER SPECIFIED

| | | |
|------------------------------------|-------------------|------------------------------|
| PROJECT # A02DPD9 | | DATE SVC REQ'D 04/28/2023 |
| NPANNX 816524 | GEO LOC EE4160 | CLLI KSCYMO41 |
| PRIMARY ENGR.: PEDERSEN, CHARLES M | | |
| ENGR. ID: CP861N | PERMIT REQ'D. | N |
| PHONE #: 8169449428 | PRINT 1 OF 10 | |

11 (1999) 845C 412'
 34Q2MT-072
 FE04, 5-8
 FE04, 21-24
 FE04, 29-32
 A, 13-20
 B2L2001, 213-216
 A, 25-32
 FT52, 9-12
 B2L2001, 421-426
 B2L2001, 417-418
 B2L2001, 333-336
 B2L2001, 419-420
 B2L2001, 347-348
 B2L2001, 377-382
 B2L2001, 359-360
 A, 61-68
 B2L2001, 231-234

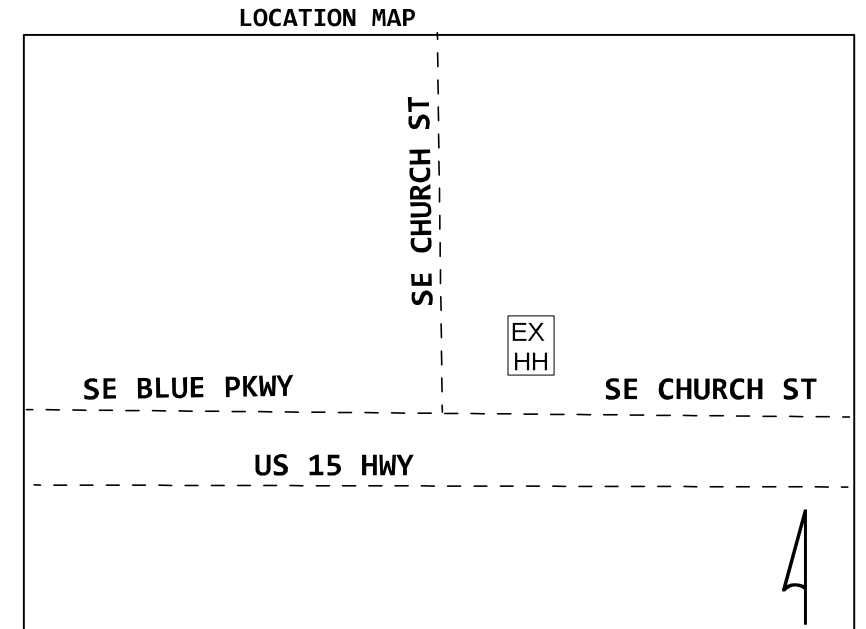
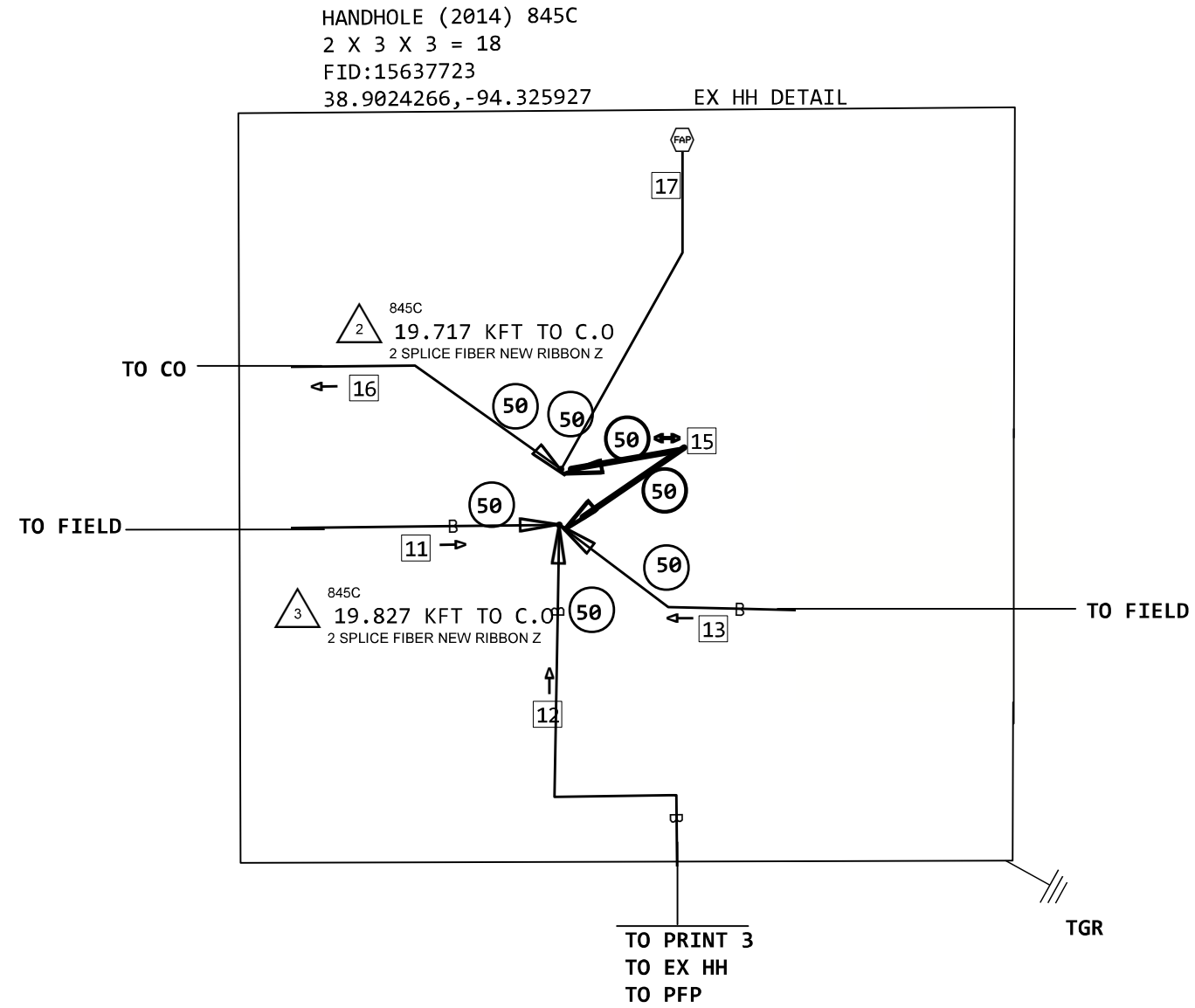
12 (2015) 845C 450'
 5462MT-288
 L2011, 1-8 NC
 <A01RWWV> A, 9-10 NC
 L2011, 11-20 NC
 A, 21-24 NC
 L2011, 25-32 NC
 B, 33-34 NC
 L2011, 35-48 NC
 B, 49-72 NC
 FE04, 5-8 NC
 FE04, 21-24 NC
 FE04, 29-32 NC
 A, 13-20 NC
 B2L2001, 213-216 NC
 A, 25-32 NC
 FT52, 9-12 NC
 B2L2001, 421-426 NC
 B2L2001, 417-418 NC
 B2L2001, 333-336 NC
 B2L2001, 419-420 NC
 B2L2001, 347-348 NC
 B2L2001, 377-382 NC
 B2L2001, 359-360 NC
 (A, 37-48) <A02DPD9> L2014, 1-12
 B, 145-288 NC

13 (2014) 845C 100'
 5BQ2MT-072
 L2011, 1-8
 <A01RWWV> A, 9-10
 L2011, 11-20
 A, 21-24
 L2011, 25-32
 B, 33-34
 L2011, 35-48
 A, 49-60
 B, 61-62
 A, 63-66
 <A01PF5V> H, 67-72

15 (PPA) 845C 110'
 5BQ2MT-072
 L2014, 1-12
 C, 13-48
 845C
 SR-549JRR-072
 110 PLACE MATERIAL ONLY PER F
 110 PLACE CABLE STUB BY SPLICE

16 (2020) 85C 1950'
 5BQ2MT-144
 L2014, 1-60
 <A01TQ5N> A, 61-66
 L2014, 67-84
 A, 85-144

17 F2210E SE BLUE PKWY
 (2020) 85C
 <A01TQ5N> A, 61-66
 L2014, 67-84



UNRELATED CABLES
 OMITTED FOR
 PRINT CLARITY

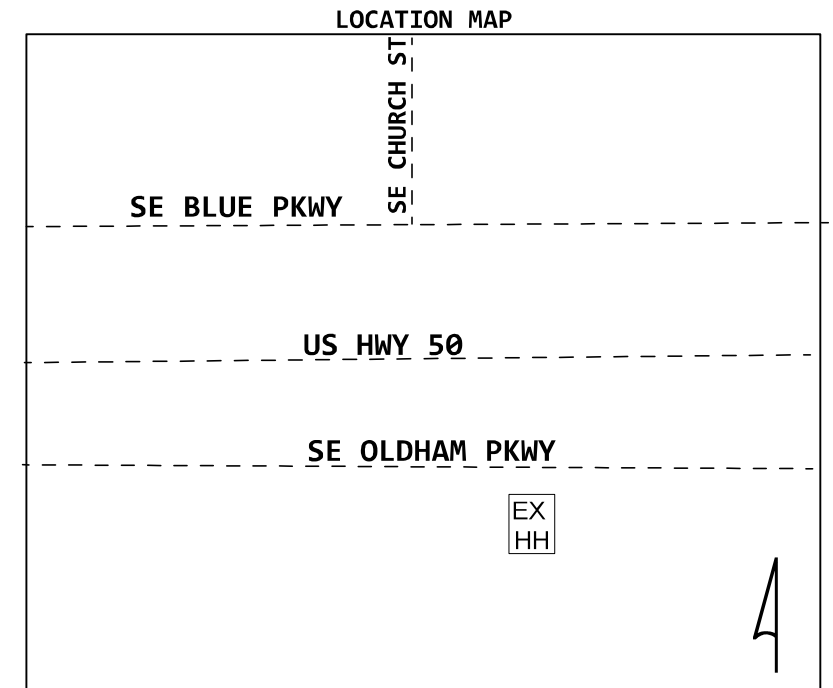
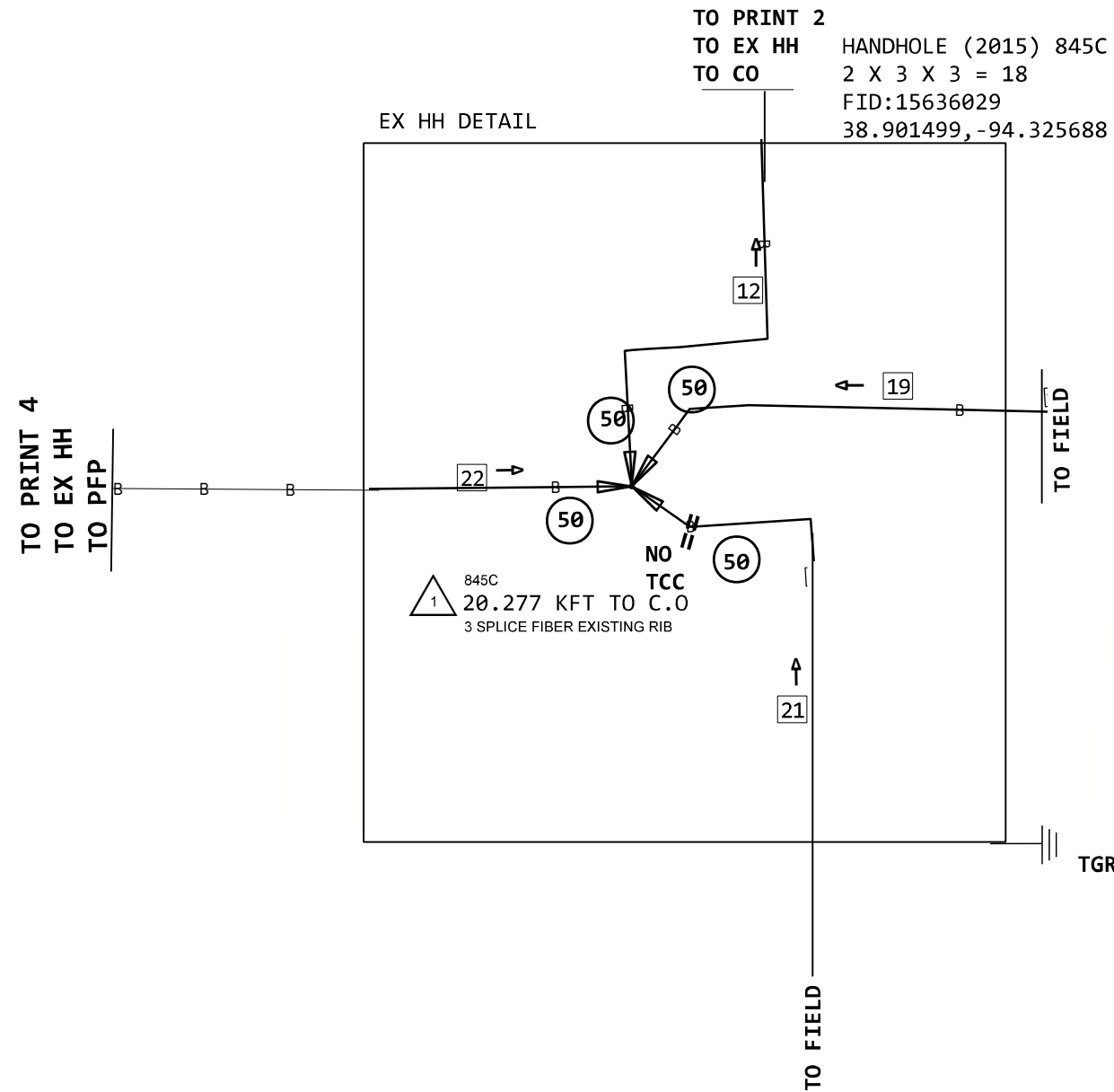
| | | |
|------------------------------------|-------------------|------------------------------|
| PROJECT # A02DPD9 | | DATE SVC REQ'D 04/28/2023 |
| NPANNX 816524 | GEO LOC EE4160 | CLLI KSCYMO41 |
| PRIMARY ENGR.: PEDERSEN, CHARLES M | | |
| ENGR. ID: CP861N | PERMIT REQ'D. | N |
| PHONE #: 8169449428 | PRINT 2 OF 10 | |

12 (2015) 845C 450'
 5462MT-288
 L2011,1-8 NC
 <A01RWWV> A,9-10 NC
 L2011,11-20 NC
 A,21-24 NC
 L2011,25-32 NC
 B,33-34 NC
 L2011,35-48 NC
 B,49-72 NC
 FE04,5-8 NC
 FE04,21-24 NC
 FE04,29-32 NC
 A,13-20 NC
 B2L2001,213-216 NC
 A,25-32 NC
 FT52,9-12 NC
 B2L2001,421-426 NC
 B2L2001,417-418 NC
 B2L2001,333-336 NC
 B2L2001,419-420 NC
 B2L2001,347-348 NC
 B2L2001,377-382 NC
 B2L2001,359-360 NC
 (A,37-48) <A02DPD9> L2014,1-12
 B,145-288 NC

19 (2015) 845C 2391'
 5BQ2MT-048
 FE04,21-24
 L2011,1-4
 A,17-20
 B2L2001,213-216
 L2011,5-8
 <A01RWWV> A,9-10
 L2011,11-20
 B,33-34
 B,35-36
 <A01GV7A> L2011,25-28
 B,41-42
 <A01GV7A> L2011,43-44
 B,45-48

21 (2015) 845C 100'
 5BQ2MT-048
 FE04,5-8 NC
 FE04,29-32 NC
 FT52,9-12 NC
 B2L2001,421-426 NC
 B2L2001,417-418 NC
 B2L2001,333-336 NC
 B2L2001,419-420 NC
 B2L2001,347-348 NC
 B2L2001,377-382 NC
 B2L2001,359-360 NC
 (A,37-48) (<A02DPD9> L2014,1-12) (<A02DPD9> D,37-48)

22 (2010) 845C 4082'
 5BQ2MT-048
 B,1-8 NC
 A,231-234 NC
 (C,13-20) <A02DPD9> L2014,1-8
 (A,21-24) <A02DPD9> L2014,9-12
 A,25-28 NC
 L2011,29-32 NC
 B,33-34 NC
 L2011,35-42 NC
 A,43-44 NC
 L2011,45-48 NC



UNRELATED CABLES OMITTED FOR PRINT CLARITY

| | | | |
|------------------------------------|-------------------|------------------------------|---|
| PROJECT # A02DPD9 | | DATE SVC REQ'D 04/28/2023 | |
| NPANNX 816524 | GEO LOC EE4160 | CLLI KSCYMO41 | |
| PRIMARY ENGR.: PEDERSEN, CHARLES M | | | |
| ENGR. ID: CP861N | | PERMIT REQ'D. | N |
| PHONE #: 8169449428 | | PRINT 3 OF 10 | |

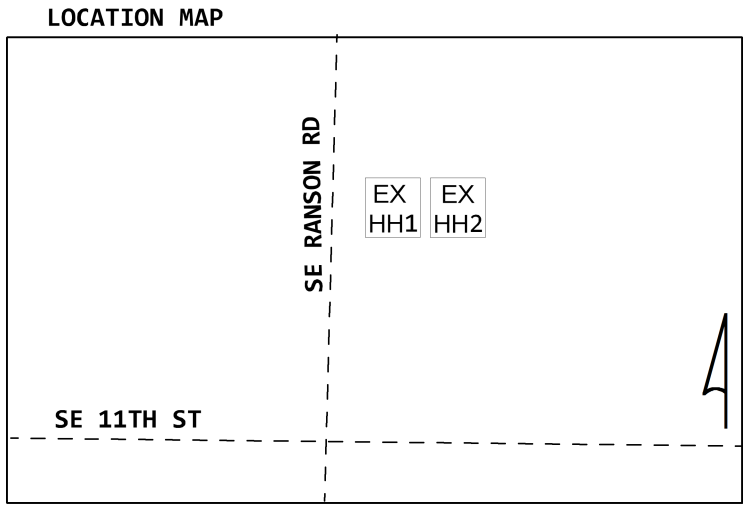
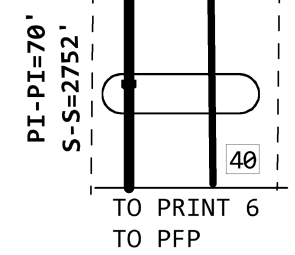
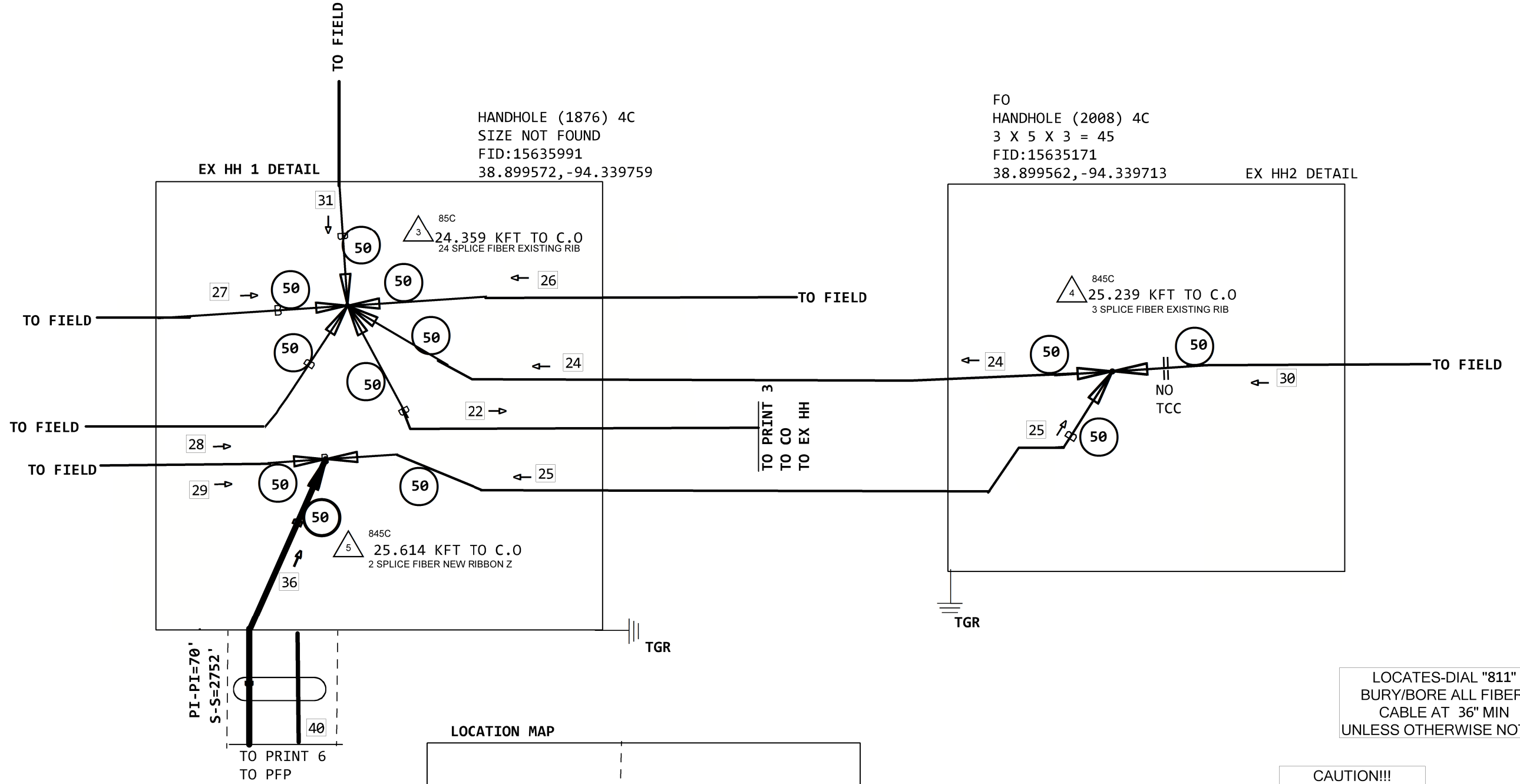
22 (2010) 845C 4082'
 5BQ2MT-048
 B,1-8 NC
 A,231-234 NC
 (C,13-20) <A02DPD9> L2014,1-8
 (A,21-24) <A02DPD9> L2014,9-12
 A,25-28 NC
 L2011,29-32 NC
 B,33-34 NC
 L2011,35-42 NC
 A,43-44 NC
 L2011,45-48 NC

24 (2008) 85C 880'
 5BQ2MT-024
 C,1-2 NC
 L2011,39-40 NC
 L2011,29-32 NC
 (C,9-20) <A02DPD9> L2014,1-12
 B2L2001,333-336 NC

25 (2014) 845C 375'
 5BQ2MT-048
 L2011,37-40 NC
 L2011,29-32 NC
 A,9-12 NC
 (A,13-24) <A02DPD9> L2014,1-12
 A,25-48 NC

36 (PPA) 845C 2752'
 SR-549JRR-048
 L2014,1-12
 E,13-48

1 845C
 SR-549JRR-048
 2752 MATERIAL ONLY
 2752 SVA ONLY - PLACE ITEM IN



LOCATES-DIAL "811"
 BURY/BORE ALL FIBER
 CABLE AT 36" MIN
 UNLESS OTHERWISE NOTED

CAUTION!!!
 LOCATE ALL
 UNDERGROUND
 FACILITIES BEFORE
 DIGGING

UNRELATED CABLES
 OMITTED FOR
 PRINT CLARITY

NOTE: CABLE ATTRIBUTES 26,27,28,29,
 30,31 ARE ON PRINT 5

| | | |
|------------------------------------|-------------------|------------------------------|
| PROJECT # A02DPD9 | | DATE SVC REQ'D 04/28/2023 |
| NPANNX 816524 | GEO LOC EE4160 | CLLI KSCYMO41 |
| PRIMARY ENGR.: PEDERSEN, CHARLES M | | |
| ENGR. ID: CP861N | PERMIT REQ'D. | Y |
| PHONE #: 8169449428 | PRINT 4 OF 10 | |

26 (1999) 85C 835'
 34Q2MT-024
 FE04,5-8
 B,5-8
 FT52,9-12
 B,13-24

30 (2008) 85C 305'
 5BQ2MT24-100LP
 C,1-8 NC NC
 (C,9-20) (<A02DPD9> L2014,1-12) (<A02DPD9> E,1-12)
 B2L2001,333-336 NC NC

27 (1999) 845C 2512'
 34Q2MT-024
 FE04,29-32
 B2L2001,425-426
 B2L2001,231-234
 B2L2001,347-348
 B2L2001,421-424
 B2L2001,377-382
 B2L2001,359-360

31 (1999) 845C 4082'
 34Q2MT-036
 FE04,5-8
 FE04,29-32
 FT52,9-12
 B2L2001,421-426
 B2L2001,417-418
 B2L2001,333-336
 B2L2001,419-420
 B2L2001,347-348
 B2L2001,377-382
 B2L2001,359-360

28 (2009) 845C 1368'
 5BQ2MT-024
 D,1-8
 B2L2001,417-418
 B2L2001,419-420
 <A01PWQ3> L2011,35-38
 L2011,41-42
 D,19-20
 L2011,45-48

29 (2014) 845C 2116'
 5BQ2MT-048
 L2011,37-40
 L2011,29-32
 A,9-20
 A,21-24
 A,25-48

NOTE:CABLE ATTRIBUTES 26,27,28,29,
 30,31 ARE FROM PRINT 4

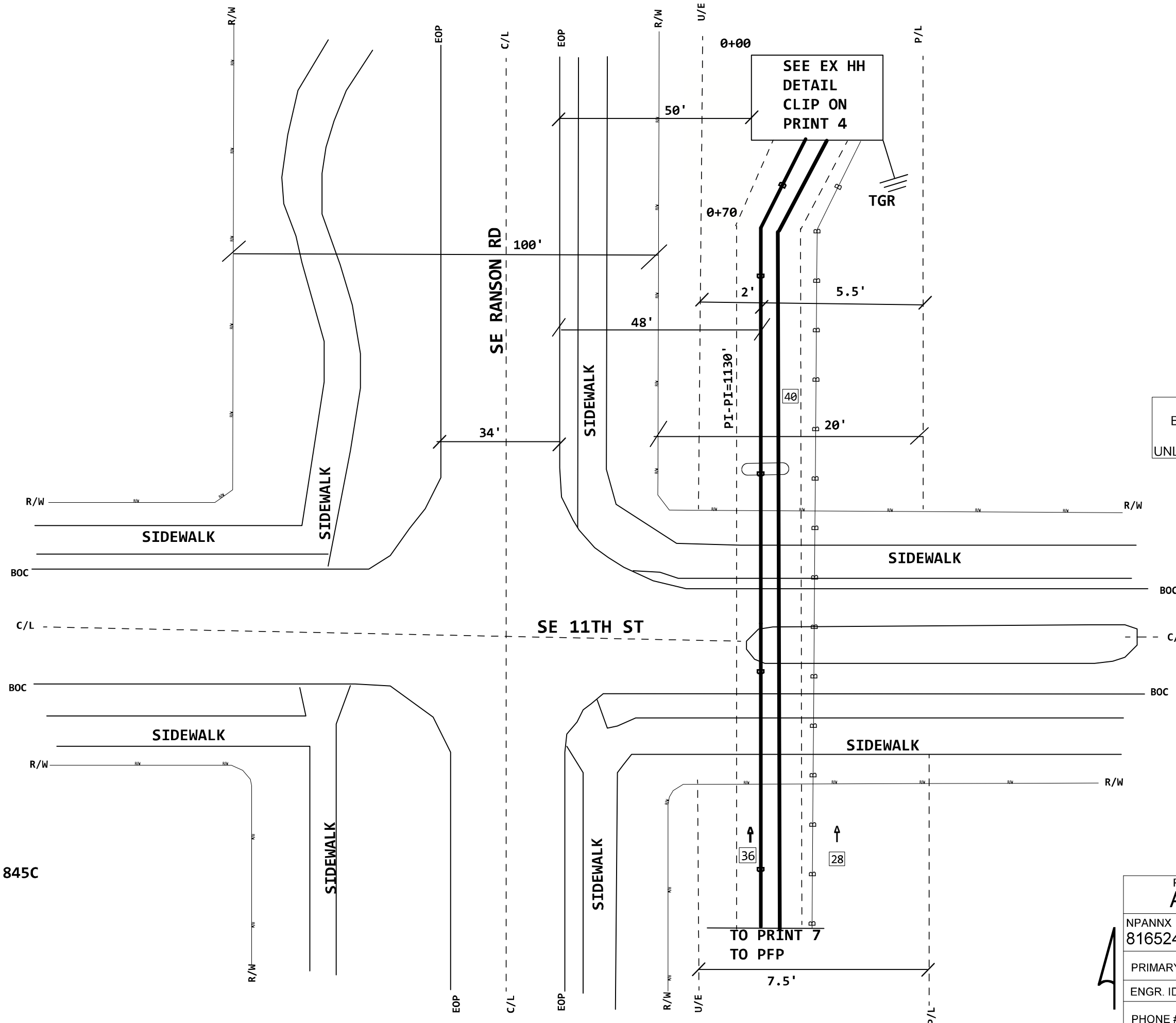
4

| | | | |
|---|--------------------------|-------------------------------------|----------|
| PROJECT # A02DPD9 | | DATE SVC REQ'D 04/28/2023 | |
| NPANNX 816524 | GEO LOC EE4160 | CLLI KSCYMO41 | |
| PRIMARY ENGR.: PEDERSEN, CHARLES M | | | |
| ENGR. ID: CP861N | | PERMIT REQ'D. | N |
| PHONE #: 8169449428 | | PRINT 5 OF 10 | |

28 (2009) 845C 1368'
 5BQ2MT-024
 D, 1-8
 B2L2001, 417-418
 B2L2001, 419-420
 <A01PWQ3> L2011, 35-38
 L2011, 41-42
 D, 19-20
 L2011, 45-48

PRINT 4
 36 (PPA) 845C
 SR-549JRR-048
 L2014, 1-12
 E, 13-48

PRINT 4
 40 INNERDUCT 1-2" (PPA) 845C



LOCATES-DIAL "811"
 BURY/BORE ALL FIBER
 CABLE AT 36" MIN
 UNLESS OTHERWISE NOTED

CAUTION!!!
 LOCATE ALL
 UNDERGROUND
 FACILITIES BEFORE
 DIGGING

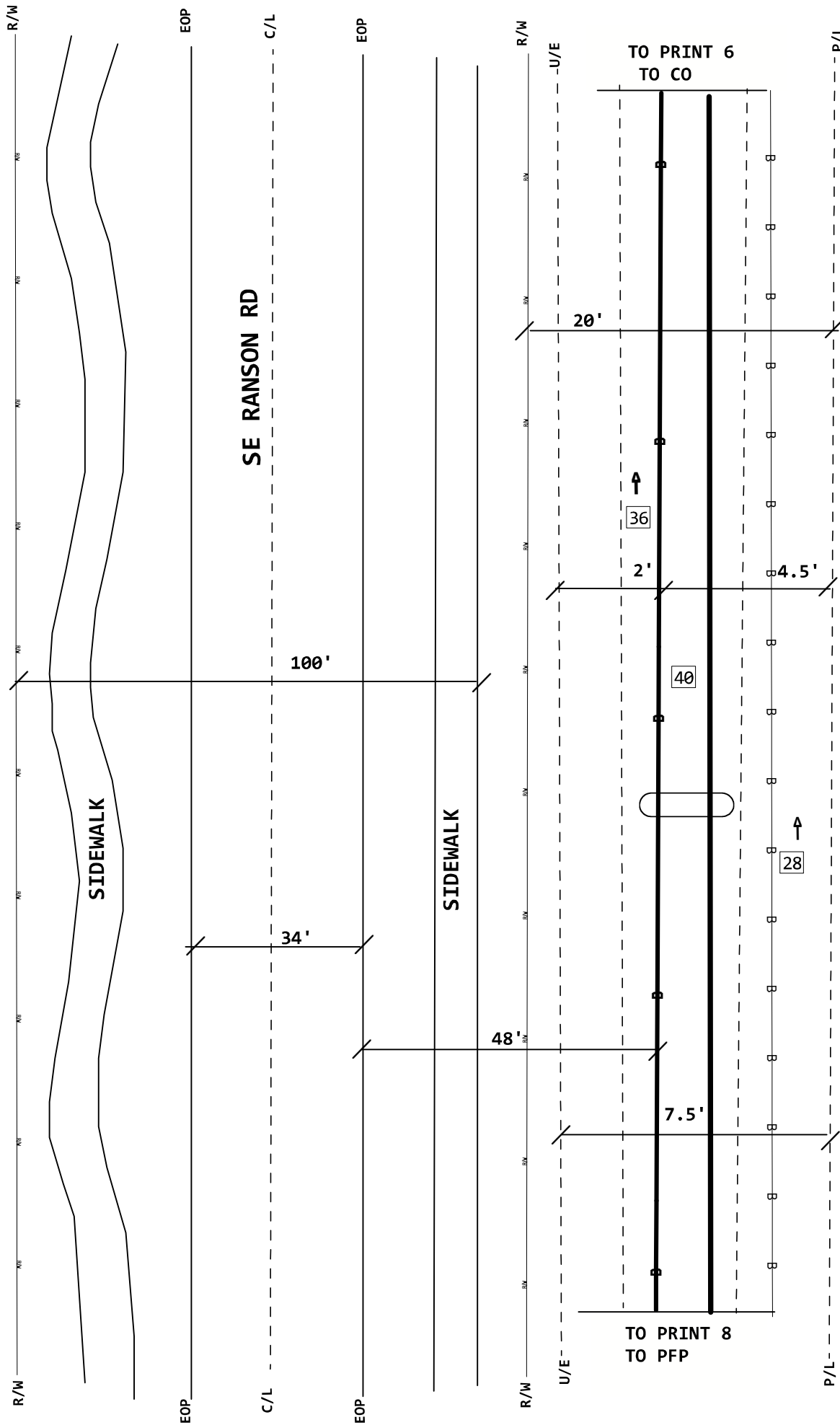
UNRELATED CABLES
 OMITTED FOR
 PRINT CLARITY

| | | |
|------------------------------------|-------------------|------------------------------|
| PROJECT # A02DPD9 | | DATE SVC REQ'D 04/28/2023 |
| NPANNX 816524 | GEO LOC EE4160 | CLLI KSCYMO41 |
| PRIMARY ENGR.: PEDERSEN, CHARLES M | | |
| ENGR. ID: CP861N | PERMIT REQ'D. | Y |
| PHONE #: 8169449428 | PRINT 6 OF 10 | |

28 (2009) 845C 1368'
 5BQ2MT-024
 D, 1-8
 B2L2001, 417-418
 B2L2001, 419-420
 <A01PWQ3> L2011, 35-38
 L2011, 41-42
 D, 19-20
 L2011, 45-48

PRINT 4
 36 (PPA) 845C
 SR-549JRR-048
 L2014, 1-12
 E, 13-48

PRINT 4
 40 INNERDUCT1-2" (PPA) 845C



LOCATES-DIAL "811"
 BURY/BORE ALL FIBER
 CABLE AT 36" MIN
 UNLESS OTHERWISE NOTED

UNRELATED CABLES
 OMITTED FOR
 PRINT CLARITY

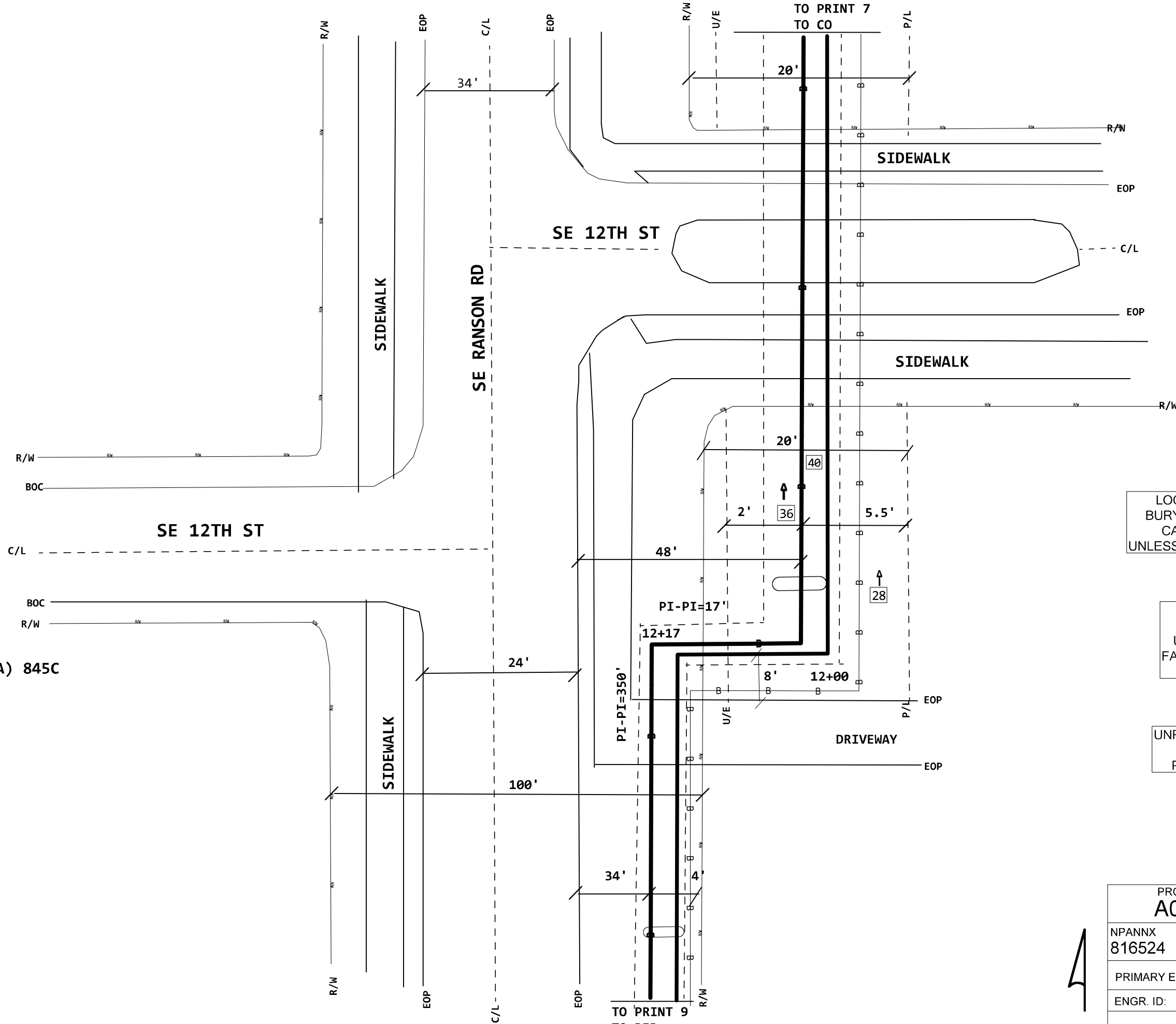
CAUTION!!!
 LOCATE ALL
 UNDERGROUND
 FACILITIES BEFORE
 DIGGING

| | | |
|------------------------------------|-------------------|------------------------------|
| PROJECT # A02DPD9 | | DATE SVC REQ'D 04/28/2023 |
| NPANNX 816524 | GEO LOC EE4160 | CLLI KSCYMO41 |
| PRIMARY ENGR.: PEDERSEN, CHARLES M | | |
| ENGR. ID: CP861N | PERMIT REQ'D. | Y |
| PHONE #: 8169449428 | PRINT 7 OF 10 | |

28 (2009) 845C 1368'
 5BQ2MT-024
 D, 1-8
 B2L2001, 417-418
 B2L2001, 419-420
 <A01PWQ3> L2011, 35-38
 L2011, 41-42
 D, 19-20
 L2011, 45-48

PRINT 4
 36 (PPA) 845C
 SR-549JRR-048
 L2014, 1-12
 E, 13-48

40 INNERDUCT1-2" (PPA) 845C



LOCATES-DIAL "811"
 BURY/BORE ALL FIBER
 CABLE AT 36" MIN
 UNLESS OTHERWISE NOTED

CAUTION!!!
 LOCATE ALL
 UNDERGROUND
 FACILITIES BEFORE
 DIGGING

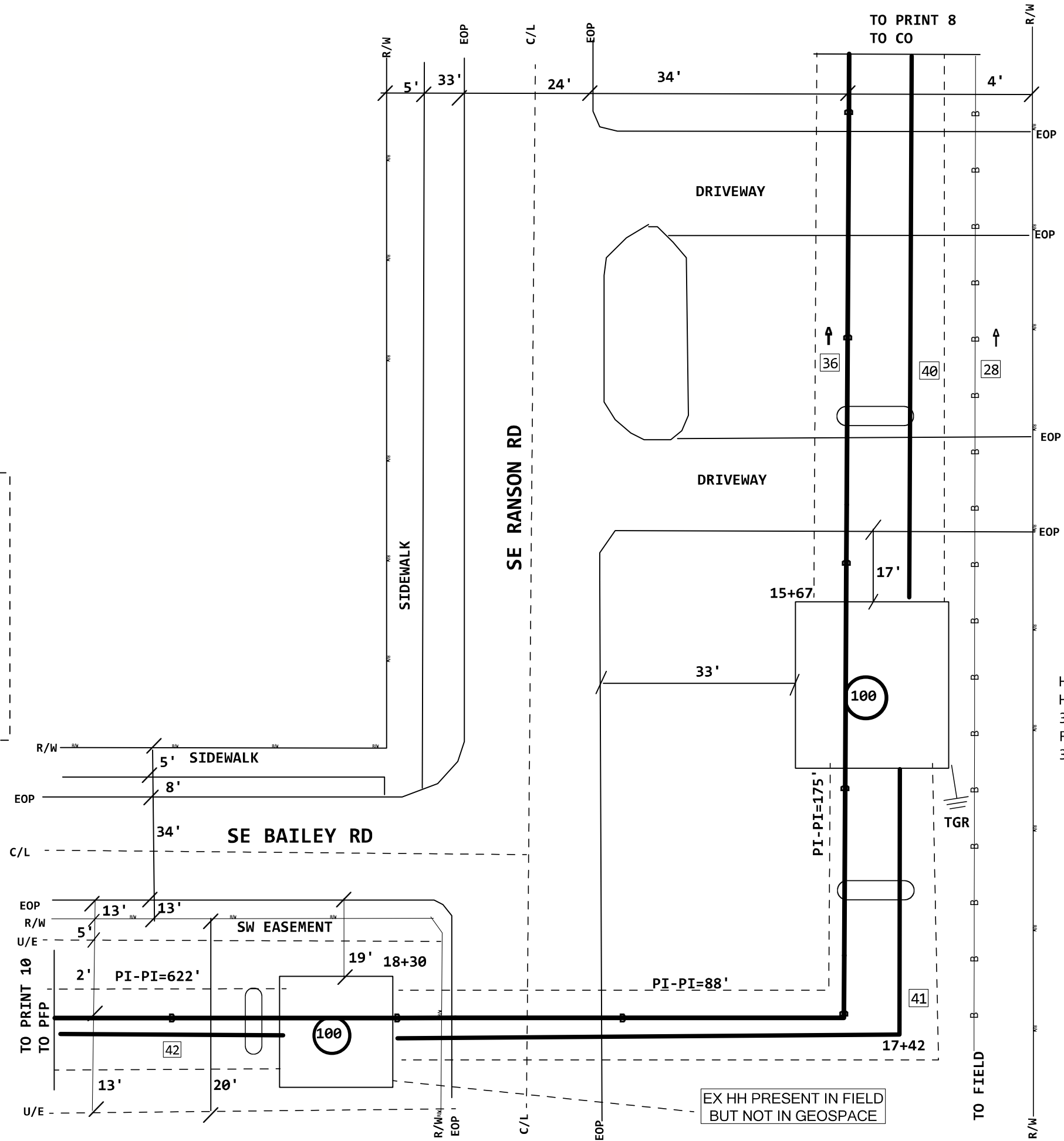
UNRELATED CABLES
 OMITTED FOR
 PRINT CLARITY

4

| | | |
|------------------------------------|-------------------|------------------------------|
| PROJECT # A02DPD9 | | DATE SVC REQ'D 04/28/2023 |
| NPANNX 816524 | GEO LOC EE4160 | CLLI KSCYMO41 |
| PRIMARY ENGR.: PEDERSEN, CHARLES M | | |
| ENGR. ID: CP861N | PERMIT REQ'D. | Y |
| PHONE #: 8169449428 | PRINT 8 OF 10 | |

PRINT 4
 36 (PPA) 845C
 SR-549JRR-048
 L2014,1-12
 E,13-48

PRINT 4
 40 INNERDUCT1-2" (PPA) 845C
 845C
 1 INNERDUCT1-2"
 263 EXEMPT MATERIAL ONLY
 263 SVA ONLY - BORE ? INCLUDE
 41 263' INNERDUCT1-2" (PPPA) 845C
 845C
 2 INNERDUCT1-2"
 622 EXEMPT MATERIAL ONLY
 622 SVA ONLY - BORE ? INCLUDE
 42 622' INNERDUCT1-2" (PPA) 845C



LOCATES-DIAL "811"
 BURY/BORE ALL FIBER
 CABLE AT 36" MIN
 UNLESS OTHERWISE NOTED

CAUTION!!!
 LOCATE ALL
 UNDERGROUND
 FACILITIES BEFORE
 DIGGING

HH
 HANDHOLE (2009) 845C
 3 X 5 X 3 = 45
 FID: 15640366
 38.89542, -94.340062

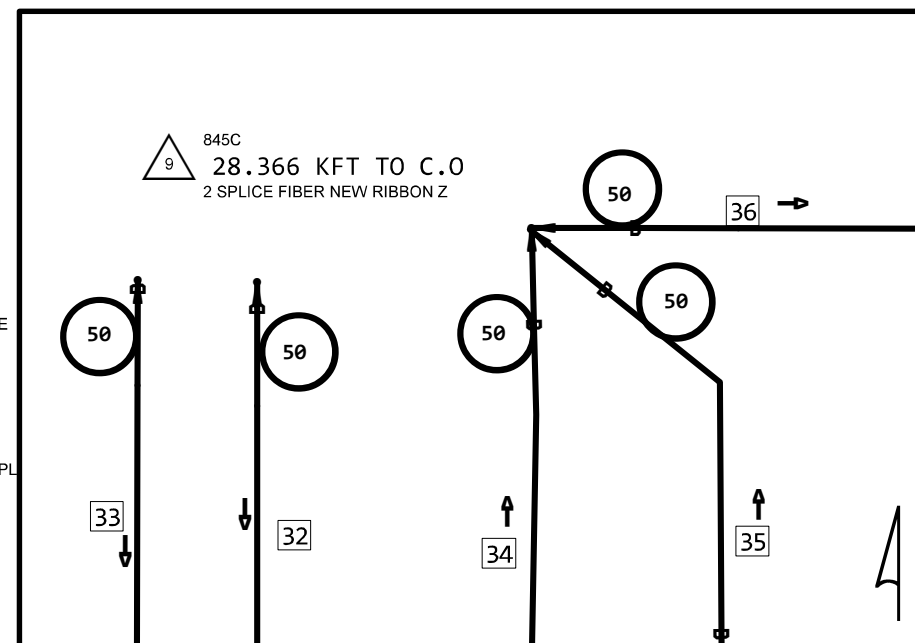
UNRELATED CABLES
 OMITTED FOR
 PRINT CLARITY

| | | |
|------------------------------------|-------------------|------------------------------|
| PROJECT # A02DPD9 | | DATE SVC REQ'D 04/28/2023 |
| NPANNX 816524 | GEO LOC EE4160 | CLLI KSCYMO41 |
| PRIMARY ENGR.: PEDERSEN, CHARLES M | | |
| ENGR. ID: CP861N | PERMIT REQ'D. | Y |
| PHONE #: 8169449428 | PRINT 9 OF 10 | |

845C
13 TERMINATE
6 TERMINATE

NOTE: LEAVE COUNTS L2014, 3-12 FOR FUTURE USE

NEW HH DETAIL



TIER:15
F 1321 SEB
HH-3X5X3 (PPA) 845C
3 X 5 X 3 = 45
FID:101149841

C.O.
202 SE 3RD ST
CITY: KANSAS CITY
CLLI: KSCYMO41

CAUTION!!!
LOCATE ALL
UNDERGROUND
FACILITIES BEFORE
DIGGING

LOCATES-DIAL "811"
BURY/BORE ALL FIBER
CABLE AT 36" MIN
UNLESS OTHERWISE NOTED

BEFORE YOU
DIG!
2 DAYS PRIOR
CALL 811

UNRELATED CABLES
OMITTED FOR
PRINT CLARITY

| | | |
|------------------------------------|-------------------|------------------------------|
| PROJECT # A02DPD9 | | DATE SVC REQ'D 04/28/2023 |
| NPANNX 816524 | GEO LOC EE4160 | CLLI KSCYMO41 |
| PRIMARY ENGR.: PEDERSEN, CHARLES M | | |
| ENGR. ID: CP861N | PERMIT REQ'D. | Y |
| PHONE #: 8169449428 | PRINT 10 OF 10 | |

30 KSCYMO41
F 1321-1 SE BAILEY RD
SPLSCAPC1X32LS (PPA) 845C
L2014, 1-2
1X32 SPT2132PA, 1-64

31 KSCYMO41
F 1321-1 SE BAILEY RD
BABMS864-100ST (PPA) 845C
IN SPT2132PA, 1-64
OUT PON1321SEB, 1-864

32 (PPA) 845C 100'
TAIL
OUT PON1321SEB, 1-432

33 (PPA) 845C 100'
TAIL
OUT PON1321SEB, 433-864

34 (PPA) 845C 100'
TAIL
C, 1-144

35 (PPA) 845C 100'
TAIL
L2014, 1-12
A, 13-144

36 (PPA) 845C
SR-549JRR-048
L2014, 1-12
E, 13-48

37 KSCYMO41
F 1321-1 SE BAILEY RD
FDF-144 (PPA) 845C
C, 1-144

42 INNERDUCT 1-2" (PPA) 845C

11 @ PFP, 28.466 KFT TO C.O.
66 TESTING FIBER FACILITIES

TEST @ PFP
RECEIVE TEST FOR
ALL PORTS ON
EACH SPLITTER.
SPT2132PA, 1-64
L2014, 1-2

Relay Rack 010126.12, Panel 01, Pins 1-12

12 @ C.O.
66 TESTING FIBER FACILITIES

TEST @ C.O.
SEND TEST FOR
ALL PORTS ON
EACH SPLITTER.
SPT2132PA, 1-64
L2014, 1-2

