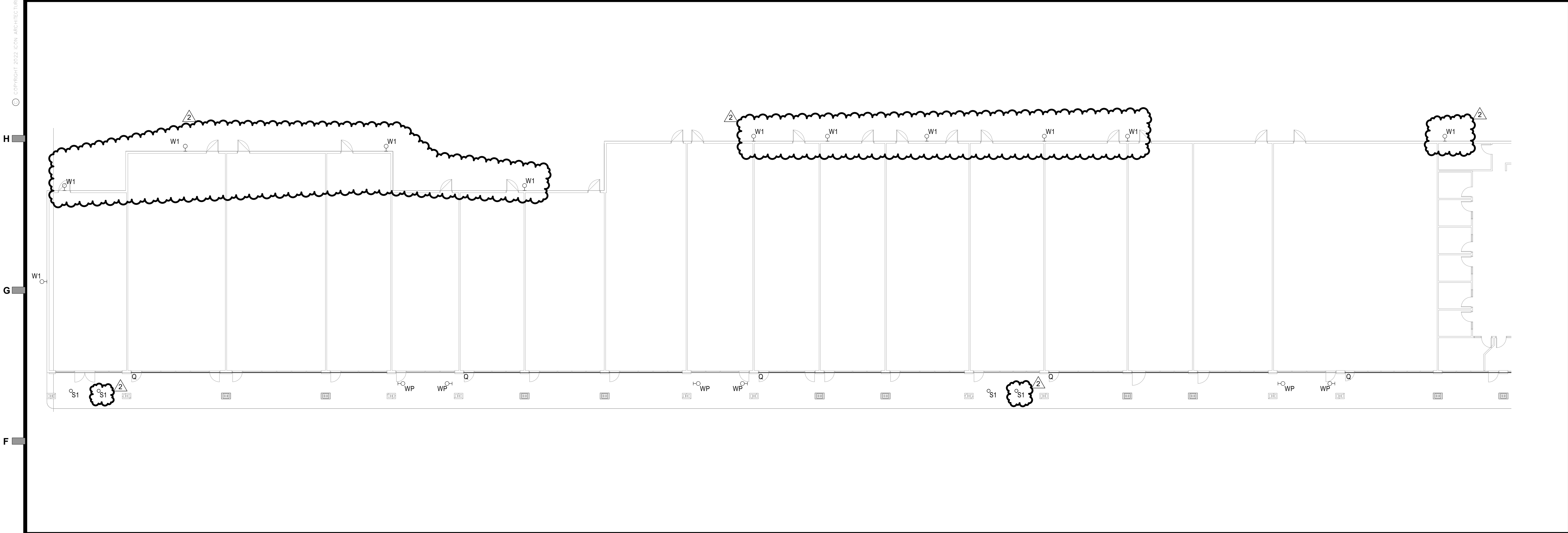
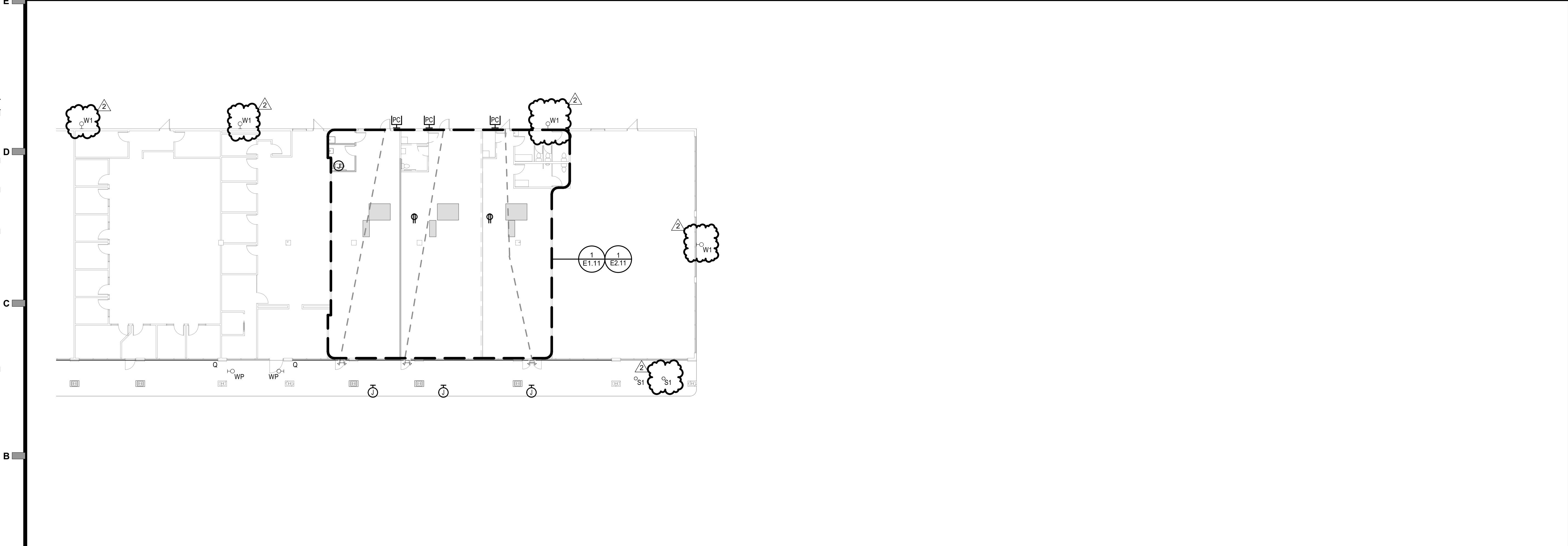


10/13/2022 9:34:14 AM C:\local\2021\2218000\_Deer Brook Retail Renovations\_SBM MEP\_2021\_CENTRAL\_p.kpatro.rvt

© COPYRIGHT 2022 ICON ARCHITECTURE



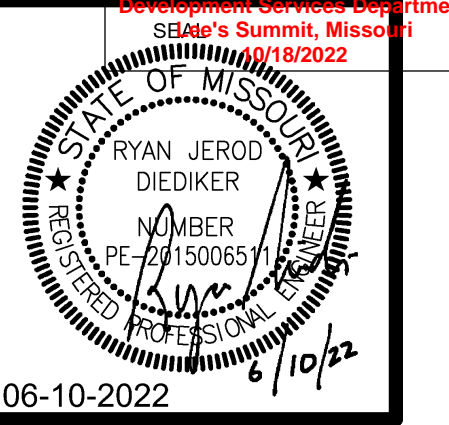
1 OVERALL ELECTRICAL PLAN - LEVEL 1  
1/16" = 1'-0"



2 OVERALL ELECTRICAL PLAN - LEVEL 1  
1/16" = 1'-0"



- GENERAL NOTES:
1. REFER TO M/E SCHEDULES AND DETAILS FOR MECHANICAL EQUIPMENT CIRCUITING INFORMATION.
  2. FIRESTOP ALL CONDUIT PENETRATIONS THROUGH FIRE ROUTED WALLS AND FLOORS AFTER INSTALLATION IS COMPLETE.
  3. WHERE ANY DEVICE JUNCTION BOXES ARE RECESSED WITHIN OPPOSITE SIDES OF A FIRE RATED WALL AND ARE WITHIN 24" OF EACH OTHER MEASURED HORIZONTALLY, FURNISH AND INSTALL AN INTUMESCENT MOLDABLE FIRE STOP PUTTY PAD AROUND EACH JUNCTION BOX.
  4. CIRCUIT ALL EMERGENCY BALLASTS, EMERGENCY FIXTURES AND EXIT SIGNS WITH AN UNSWITCHED HOT CONDUCTORS.
  5. 120V BRANCH CIRCUITING SHALL BE AS FOLLOWS: (UNLESS NOTED OTHERWISE).  
  
0'-100' = 12 AWG.  
101'-150' = 10AWG.  
151'-250' = 8AWG.
  6. ALL EXTERIOR LIGHTING IS REPLACED 1 FOR 1 WITH NEW LED. REFER TO LIGHT FIXTURE SCHEDULE FOR ADDITIONAL INFORMATION. MAINTAIN EXISTING CIRCUITRY.



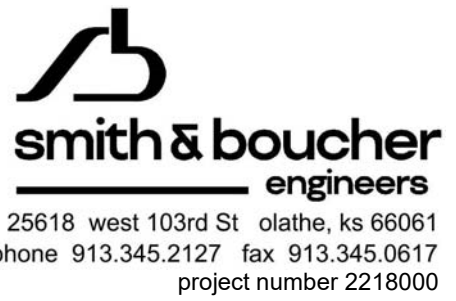
PERMIT SET

DEER BROOK PLAZA  
1121 & 1151 NE RICE ROAD  
LEE'S SUMMIT, MO 64086-6788



506 Grand Boulevard  
Kansas City, MO 64106  
p:816.221.0250 f:816.221.0251

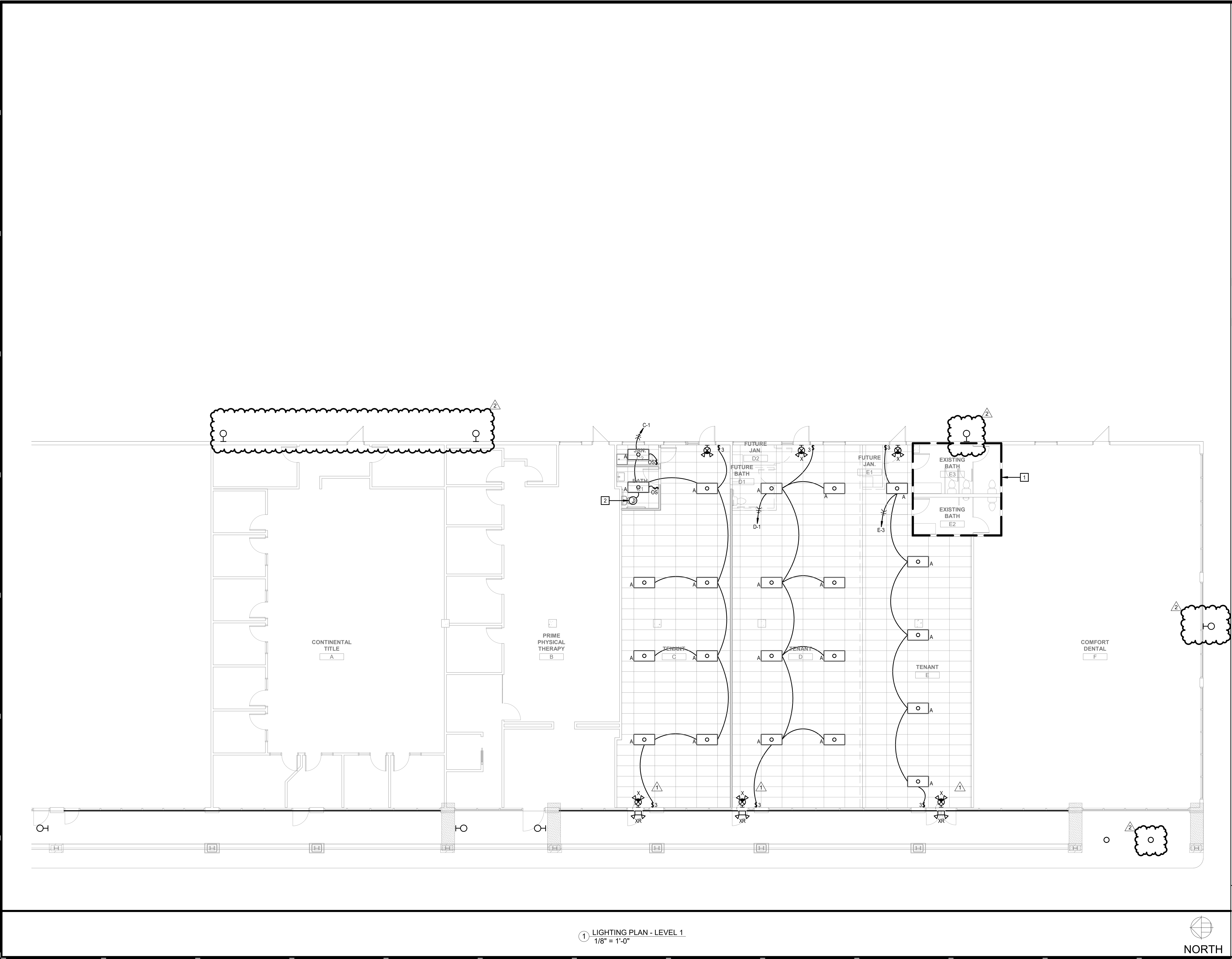
REVISIONS	
2 LIGHT FIXTURE REV.	10-13-22
ISSUE DATE	
06-10-22	
PROJECT NUMBER	
2022-000	
SHEET NUMBER	
E1.10	
Overall Electrical Plan - Level 1	



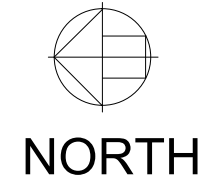
10/13/2022 9:34:17 AM C:\Local\2021\2218000\_Deer Brook Retail Renovations\_SBMEP\_2021\_CENTRAL\_pkatro.rvt

© COPYRIGHT 2022 ICON ARCHITECTURE

A B C D E F G H



1 LIGHTING PLAN - LEVEL 1  
1/8" = 1'-0"

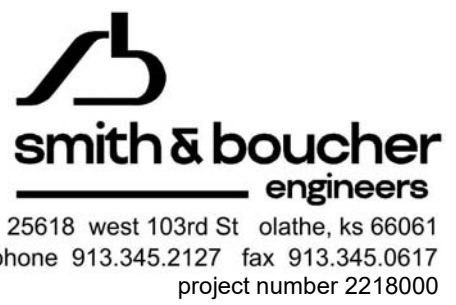


GENERAL NOTES:

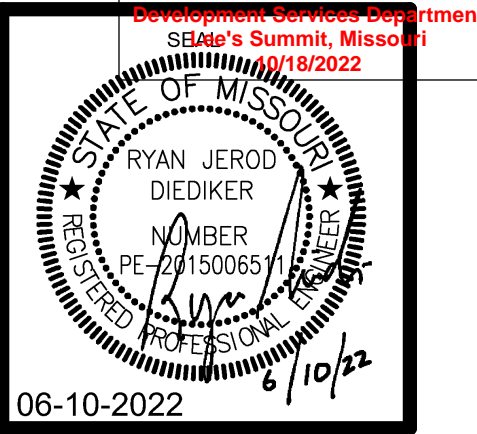
1. REFER TO M/E SCHEDULES AND DETAILS FOR MECHANICAL EQUIPMENT CIRCUITING INFORMATION.
2. FIRESTOP ALL CONDUIT PENETRATIONS THROUGH FIRE ROUTED WALLS AND FLOORS AFTER INSTALLATION IS COMPLETE.
3. WHERE ANY DEVICE JUNCTION BOXES ARE RECESSED WITHIN OPPOSITE SIDES OF A FIRE RATED WALL AND ARE WITHIN 24" OF EACH OTHER MEASURED HORIZONTALLY, FURNISH AND INSTALL AN INTUMESCENT MOLDABLE FIRE STOP PUTTY PAD AROUND EACH JUNCTION BOX.
4. CIRCUIT ALL EMERGENCY BALLASTS, EMERGENCY FIXTURES AND EXIT SIGNS WITH AN UNSWITCHED HOT CONDUCTORS.
5. 120V BRANCH CIRCUITING SHALL BE AS FOLLOWS: (UNLESS NOTED OTHERWISE).  
  
0'-100' = 12 AWG.  
101'-150' = 10AWG.  
151'-250' = 8AWG.

PLAN NOTES:

- 1 CONNECT EXISTING LIGHT FIXTURES IN THIS BATHROOM TO NEW PANEL 'E' CIRCUIT #1. REFER TO PANEL SCHEDULE FOR ADDITIONAL INFORMATION.
- 2 PROVIDE ELECTRIC CONNECTION TO EXHAUST FAN. REFER TO MECHANICAL PLANS & SCHEDULE FOR ADDITIONAL INFORMATION.



25618 west 103rd St. olathe, ks 66061  
phone 913.345.2127 fax 913.345.0617  
project number 2218000



PERMIT SET

DEER BROOK PLAZA  
1121 & 1151 NE RICE ROAD  
LEE'S SUMMIT, MO 64086-6788



506 Grand Boulevard  
Kansas City, MO 64106  
p:816.221.0250 f:816.221.0251

REVISIONS		Lighting Plan - Level 1
1	BUILDING PLAN REVIEW	
2	LIGHT FIXTURE REV.	
		E1.11
		Lighting Plan - Level 1



PROJECT NAME: Deer Brook Retail Renovations  
AUTOCAD FILE LOCATION \ NAME: X:\22\22180\Drawings\06-2218000\_E3.12.dwg  
LAST CORRECTION BY DATE TIME: Thursday, October 13, 2022 9:48:15 AM  
PPatro  
PLOTED BY DATE TIME: Thursday, October 13, 2022 9:49:06 AM  
PPatro

© COPYRIGHT 2013 JENI ARCHITECTURE

14

13

12

11

10

9

8

7

6

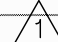
5

4

3

2

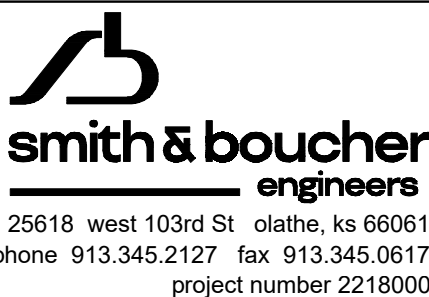
1

PANEL E									
MAIN BUS AMPS:		225 A		AIC:		22,000 A		MAIN LUGS ONLY	
MAIN BREAKER:		N/A		SECTIONS:		1 - 42 SPACE		EQUIPMENT GROUND BUS	
VOLTAGE:		208Y/120 V		MOUNTING:		RECESSED			
PHASES/WIRES:		3 PH / 4 W		ENCLOSURE TYPE:		NEMA 1			
CIRCUIT DESCRIPTION		POLES	AMPS	CKT NO	CKT NO	AMPS	POLES	CIRCUIT DESCRIPTION	
LTG - EXISTING BATHROOM		1	20	1	2	20	1	REC - BATHROOM.	
LTG - SIGNAGE		1	20	3	4	20	1	REC - SHELL. 	
AHU-3		3	50	5	6	20	1	REC - ROOFTOP	
				7	8	20	1	SPARE	
				9	10	20	1	SPARE	
CU-3		2	40	11	12	20	1	SPARE	
				13	14	20	1	SPARE	
SPARE		1	20	15	16	20	1	SPARE	
SPARE		1	20	17	18	20	1	SPARE	
SPARE		1	20	19	20	20	1	SPARE	
SPARE		1	20	21	22	20	1	SPARE	
SPARE		1	20	23	24	20	1	SPARE	
SPARE		1	20	25	26	20	1	SPARE	
SPARE		1	20	27	28	20	1	SPARE	
SPARE		1	20	29	30	20	1	SPARE	
SPARE		1	20	31	32	20	1	SPARE	
SPARE		1	20	33	34	20	1	SPARE	
SPARE		1	20	35	36	20	1	SPARE	
SPACE ONLY		1		37	38		1	SPACE ONLY	
SPACE ONLY		1		39	40		1	SPACE ONLY	
SPACE ONLY		1		41	42		1	SPACE ONLY	

LIGHT FIXTURE SCHEDULE						
TYPE	DESCRIPTION	MOUNTING	SOURCE	VOLTS	MANUFACTURER	V-A
A	2X4 LED FLAT PANEL. INTEGRAL 0-10V DIMMING DRIVER STANDARD.	RECESSED	LED 4000K 5000 LUMENS 80 CRI	UNV	LSI SFP24 SERIES OR APPROVED EQUAL	50
Q	EXTERIOR STRIP LIGHT FOR COVE. 120 DEGREE BEAM SPREAD. IP65 RATED. PROVIDE FLAT ALUMINUM CHANNEL. REFER TO AND MEASURE OFF PLANS FOR EXACT LENGTHS. MAX LENGTH 120FT PER POWER FEED AT 250 LUM/FT OUTPUT.	SURFACE	LED 268 LM/FT 4000K 90 CRI	120	KELVIX - OREX SERIES (RX-40K) OR APPROVED EQUAL	3/LF
S1	EXTERIOR 4" DOWNLIGHT LED. 0-10V DIMMING DRIVER WIDE 75 DEGREE BEAM. SELF-FLANGED, MATTE WHITE FINISH.	RECESSED	LED 1,500 LUMENS 4000K 80 CRI	UNV	COOPER - LD4B SERIES OR APPROVED EQUAL	15.5
W1	EXTERIOR WALLPACK LED. TYPE IV WIDE DISTRIBUTION. BRONZE FINISH.	WALL	LED 4,500 LUMENS 4000K 70 CRI	UNV	LUMARK - PREVAIL PETITE DISCRETE WALL SERIES ACUITY - WDGE2 LED HE WILLIAMS - VWP HORIZONTAL OR APPROVED EQUAL	31
WP	EXTERIOR WALLPACK LED. WET LOCATION RATED. INSTALL SO LIGHTS POINTING UPWARDS.	WALL	LED 7,108 LUMENS 4000K 70 CRI	UNV	LUMARK - WPSOLED SERIES ACUITY - TWX2 LED SERIES OR APPROVED EQUAL	64
SL1	DOUBLE HEAD 180 DEGREE ARCHITECTURAL LED EXTERIOR PARKING LOT FIXTURE. BRONZE FINISH. TYPE V DISTRIBUTION. UL LISTED FOR WET LOCATION. (TENON MOUNTING PROHIBITED). INTEGRAL 10% 0-10V DIMMING DRIVER. REPLACE HEAD FIXTURE ON EXISTING POLE.	CONCRETE BASE	LED 20,000 LUM/HEAD 4000K 70 CRI	120	LUMARK - PREVAIL SERIES	153/ HEAD
SL2	DOUBLE HEAD 180 DEGREE ARCHITECTURAL LED EXTERIOR PARKING LOT FIXTURE. BRONZE FINISH. TYPE IV W/ ROTATED OPTICS. UL LISTED FOR WET LOCATION. (TENON MOUNTING PROHIBITED). INTEGRAL 10% 0-10V DIMMING DRIVER. REPLACE HEAD FIXTURE ON EXISTING POLE.	CONCRETE BASE	LED 20,000 LUM/HEAD 4000K 70 CRI	120	LUMARK - PREVAIL SERIES	153/ HEAD
XR	EMERGENCY DOUBLE REMOTE HEAD FIXTURE. ALUMINUM MATERIAL. 25 FEET COVERAGE. WHITE FINISH. WET LOCATION. (1) DOUBLE REMOTE HEAD CAPACITY PER EXIT SIGN (TYPE X). XR IS TO BE POWERED OFF TYPE X.	UNIVERSAL	LED	UNV	SURE-LITES - SRM SERIES OR APPROVED EQUAL	2.5
X	COMBINATION EXIT SIGN EGRESS LIGHT WITH REMOTE HEAD CAPACITY. RED LETTERING. NUMBER OF FACES TO CORRESPOND TO PLANS. WHITE FINISH. NICKEL CALDMIUM BATTERY.	UNIVERSAL	LED	UNV	SURE-LITES - APCH SERIES (APCH7R) OR APPROVED EQUAL	<5

PANEL C									
MAIN BUS AMPS:		225 A		AIC:		22,000 A		MAIN LUGS ONLY	
MAIN BREAKER:		N/A		SECTIONS:		1 - 54 SPACE		EQUIPMENT GROUND BUS	
VOLTAGE:		208Y/120 V		MOUNTING:		RECESSED			
PHASES/WIRES:		3 PH / 4 W		ENCLOSURE TYPE:		NEMA 1			
CIRCUIT DESCRIPTION			POLES	AMPS	CKT NO	CKT NO	AMPS	POLES	CIRCUIT DESCRIPTION
LTG - JAN/BATHRM/SHELL			1	20	1	2	20	1	REC - BATHROOM
LTG - SIGNAGE			1	20	3	4	20	1	REC - SHELL
EWH-1			2	20	5	6	20	1	REC - ROOFTOP
WATER HEATER					7	8	20	1	SPARE
AHU-1			3	50	9	10	20	1	SPARE
					11	12	20	1	SPARE
					13	14	20	1	SPARE
CU-1			2	40	15	16	20	1	SPARE
					17	18	20	1	SPARE
SPARE			1	20	19	20	20	1	SPARE
SPARE			1	20	21	22	20	1	SPARE
SPARE			1	20	23	24	20	1	SPARE
SPARE			1	20	25	26	20	1	SPARE
SPARE			1	20	27	28	20	1	SPARE
SPARE			1	20	29	30	20	1	SPARE
SPARE			1	20	31	32	20	1	SPARE
SPARE			1	20	33	34	20	1	SPARE
SPARE			1	20	35	36	20	1	SPARE
SPARE			1	20	37	38	20	1	SPARE
SPARE			1	20	39	40	20	1	SPARE
SPARE			1	20	41	42	20	1	SPARE
SPARE			1	20	43	44	20	1	SPARE
SPARE			1	20	45	46	20	1	SPARE
SPARE			1	20	47	48	20	1	SPARE
SPACE ONLY			1		49	50		1	SPACE ONLY
SPACE ONLY			1		51	52		1	SPACE ONLY
SPACE ONLY			1		53	54		1	SPACE ONLY

PANEL D				AIC:		22,000 A		MAIN LUGS ONLY	
MAIN BUS AMPS:		225 A		SECTIONS:		1 - 54 SPACE		EQUIPMENT GROUND BUS	
MAIN BREAKER:		N/A		MOUNTING:		RECESSED			
VOLTAGE:		208Y/120 V		ENCLOSURE TYPE:		NEMA 1			
PHASES/WIRES:		3 PH / 4 W							
CIRCUIT DESCRIPTION		POLES	AMPS	CKT NO	CKT NO	AMPS	POLES	CIRCUIT DESCRIPTION	
LTG - SHELL		1	20	1	2	20	1	REC - SHELL	
LTG - SIGNAGE		1	20	3	4	20	1	SPARE	
AHU-2		3	60	5	6	20	1	SPARE	
				7	8	20	1	SPARE	
				9	10	20	1	SPARE	
CU-2		2	50	11	12	20	1	SPARE	
				13	14	20	1	SPARE	
SPARE		1	20	15	16	20	1	SPARE	
SPARE		1	20	17	18	20	1	SPARE	
SPARE		1	20	19	20	20	1	SPARE	
SPARE		1	20	21	22	20	1	SPARE	
SPARE		1	20	23	24	20	1	SPARE	
SPARE		1	20	25	26	20	1	SPARE	
SPARE		1	20	27	28	20	1	SPARE	
SPARE		1	20	29	30	20	1	SPARE	
SPARE		1	20	31	32	20	1	SPARE	
SPARE		1	20	33	34	20	1	SPARE	
SPARE		1	20	35	36	20	1	SPARE	
SPARE		1	20	37	38	20	1	SPARE	
SPARE		1	20	39	40	20	1	SPARE	
SPARE		1	20	41	42	20	1	SPARE	
SPARE		1	20	43	44	20	1	SPARE	
SPARE		1	20	45	46	20	1	SPARE	
SPARE		1	20	47	48	20	1	SPARE	
SPACE ONLY		1		49	50		1	SPACE ONLY	
SPACE ONLY		1		51	52		1	SPACE ONLY	
SPACE ONLY		1		53	54		1	SPACE ONLY	



DEER BROOK PLAZA  
1121 & 1151 NE RICE ROAD  
LEE'S SUMMIT, MO 64086-6788



506 Grand Boulevard  
Kansas City, MO 64106  
p:816.221.0250 f:816.221.0251

REVISIONS
BUILDING PLAN
REVIEW 6-22-22
LIGHT FIXTURES
REV. 10-13-22

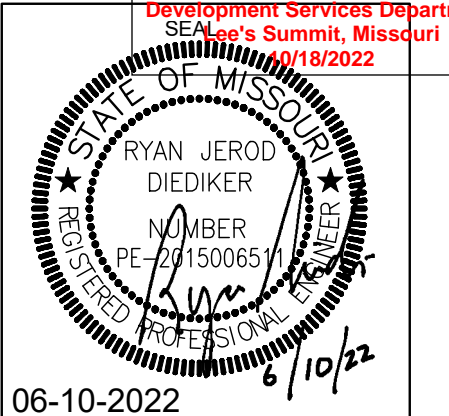
ISSUE DATE
06-10-22
PROJECT NUMBER
2022-000
SHEET NUMBER

E3.12

Electrical - Schedules & Details

PERMIT SET

06-10-2022



RELEASED FOR  
CONSTRUCTION  
As Noted on Plans Review  
Development Services Department  
SEA's Summit, Missouri  
10/18/2022