

# EXTERIOR SIGNAGE SITE PLAN



SIGN ID	DESCRIPTION	QTY
S1	24" CHANNEL LETTERS	1
S2	18" CHANNEL LETTERS	1
S3	18" CHANNEL LETTERS	1
S4	TENANT PANELS	2
S5	DOOR VINYL	1
S6	COMING SOON CONSTRUCTION VINYL	1
S7	NOW OPEN CONSTRUCTION VINYL	1
S8	CARD SWIPE MESSAGE PLAQUE	1
S9	ATM SUPPORT PLAQUE	1

These drawings are not for construction purposes. The information contained herein is intended to express design intent only. This original design is the sole property of Blair Image Elements. It cannot be reproduced, copied or exhibited, in whole or in part, without first obtaining written consent from Blair Image Elements.



PNC  
West Pryor Development, Lot 9A  
Lees Summit, MO 64086

STORE #  
BAU531

Issue Date: 05/11/22 Drawn By: RSF		
REV	DATE	DESCRIPTION
0	05/11/22	INITIAL RELEASE
1	05/12/22	ENLARGED ELEVATIONS

## EXTERIOR SIGNAGE PLAN

Page 3

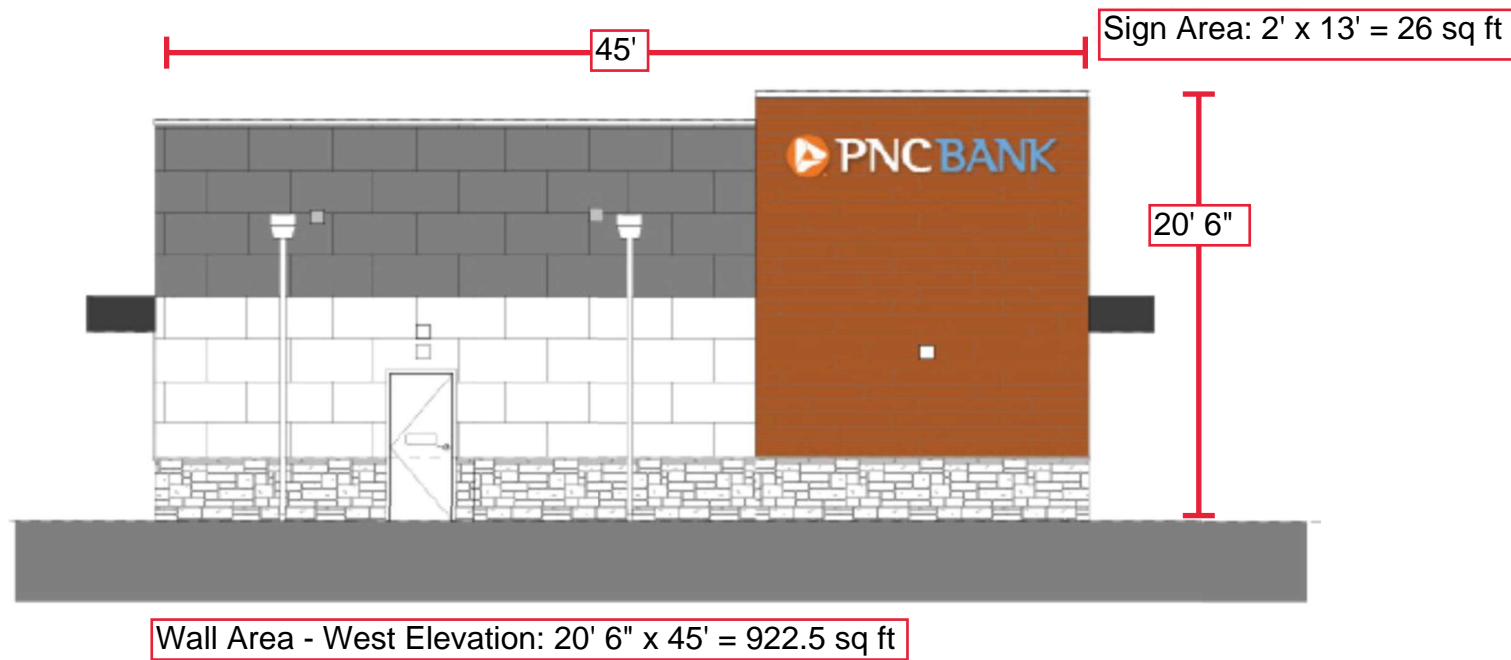
Rev: 1  
Date: 05/12/22  
Doc #: AD-PNC-1000310-220511-1  
Blair Project #: 1000310  
Blair Sales Order #: N/A

Blair Image Elements  
5107 Kissell Avenue  
Altoona, PA 16601  
P: (814) 949.8287  
blairimage.com



SCOPE OF WORK

- 1. 18" WHITE ILLUMINATED CHANNEL LETTERS
- 2. DIMENSIONS TO BE VERIFIED



These drawings are not for construction purposes. The information contained herein is intended to express design intent only. This original design is the sole property of Blair Image Elements. It cannot be reproduced, copied or exhibited, in whole or in part, without first obtaining written consent from Blair Image Elements.



PNC  
West Pryor Development, Lot 9A  
Lees Summit, MO 64086

STORE #  
BAU531

Issue Date: 05/11/22 Drawn By: RSF		
REV	DATE	DESCRIPTION
0	05/11/22	INITIAL RELEASE
1	05/12/22	ENLARGED ELEVATIONS

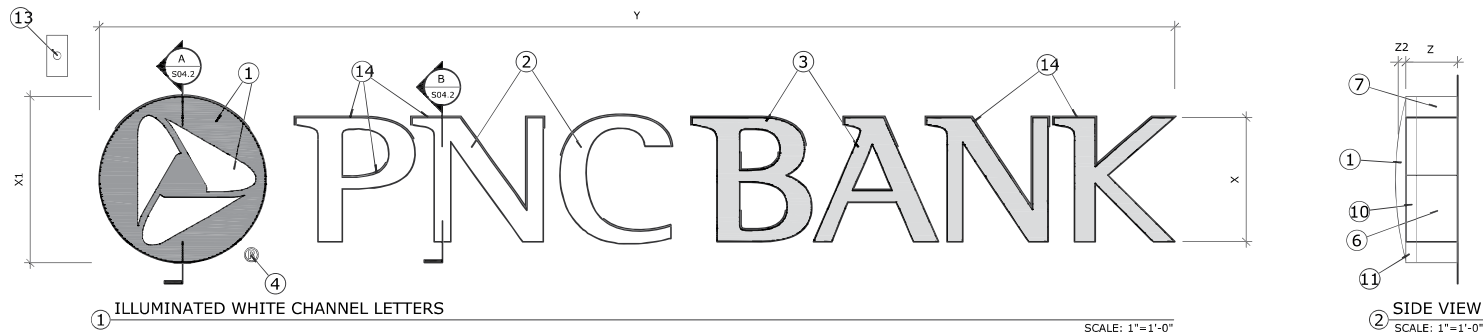
S2 PROPOSED

Page 6

Rev: 1  
Date: 05/12/22  
Doc #: AD-PNC-1000310-220511-1  
Blair Project #: 1000310  
Blair Sales Order #: N/A

Blair Image Elements  
5107 Kissell Avenue  
Altoona, PA 16601  
P: (814) 949.8287  
blairimage.com

**blair**  
IMAGE ELEMENTS™



Sign Type	X	X1	Y	Z	Z2
IL-12-W	1'-0"	1'-4 1/8"	8'-7 7/8"	5"	1"
IL-15-W	1'-3"	1'-8 1/8"	10'-9 7/8"	5"	1"
IL-18-W	1'-6"	2'-0 1/8"	12'-11 7/8"	5"	1 3/8"
IL-24-W	2'-0"	2'-8 1/8"	17'-3 3/4"	5"	1 3/4"
IL-30-W	2'-6"	3'-4 1/4"	21'-7 3/4"	5"	2 1/2"
IL-36-W	3'-0"	4'-0 1/4"	25'-11 5/8"	5"	2 3/4"

## NOTES

- "POWERLINK" TO BE DROP FORMED .118" CLEAR IMPACT MODIFIED ACRYLIC (ACRYSTEEL OR APPROVED EQUAL). SEE CHART FOR FORMED DEPTH. SECOND SURFACE DECORATE WITH PNC TRANSLUCENT ORANGE. "ELEMENTS" OF POWERLINK TO BE DROP CUT AND DECORATED WITH PNC WHITE TRANSLUCENT FILM. 1/8" OVERLAP MAXIMUM. USE ARTWORK PROVIDED BY DESIGNER.
- "PNC" TO BE .118" WHITE TRANSLUCENT IMPACT MODIFIED ACRYLIC (ACRYSTEEL #7328 OR APPROVED EQUAL). USE ARTWORK PROVIDED BY DESIGNER.
- "BANK" TO BE .118" CLEAR IMPACT MODIFIED ACRYLIC (ACRYSTEEL OR APPROVED EQUAL). SECOND SURFACE DECORATE WITH PNC LT. BLUE TRANSLUCENT FILM. USE ARTWORK PROVIDED BY DESIGNER.
- "PNC" TO BE .25" CLEAR IMPACT MODIFIED ACRYLIC (ACRYSTEEL OR APPROVED EQUAL). FIRST SURFACE DECORATE WITH PNC BLUE DUAL COLOR FILM. SECOND SURFACE DECORATE WITH ARLO 5500-30 WHITE DIFFUSER. USE ARTWORK PROVIDED BY DESIGNER.
- TRADEMARK REGISTRATION TO BE .125" ALUMINUM PLATE. PAINT FINISH PNC BLUE. SATIN FINISH. "CIRCLE R" TO BE PNC ORANGE FILM. USE ARTWORK PROVIDED BY DESIGNER. WELD STUD SECOND SURFACE FOR WALL ATTACHMENT.
- LETTER RETURNS TO BE ALUMINUM. THICKNESS AS FOLLOWS PER CAP HEIGHTS: 12":.040", 15"-25":.050", 26"-35":.063", 36" AND LARGER:.090". PAINT FINISH EXTERIOR PNC BLUE. SATIN FINISH. PAINT FINISH INTERIOR SURFACES WITH LIGHT ENHANCEMENT PAINT.
- SYMBOL RETURNS TO BE .063" ALUMINUM UP TO 21" DIAMETER, .090" GREATER THAN 21" DIAMETER. PAINT FINISH PNC ORANGE. SATIN FINISH.
- LETTER BACKS TO BE ALUMINUM, THICKNESS AS FOLLOWS PER CAP HEIGHTS: 12":.063", 15"-35":.090", 36" AND LARGER:.125". PAINT FINISH EXTERIOR SURFACE PNC BLUE. SATIN FINISH. PAINT FINISH INTERIOR SURFACES WITH LIGHT ENHANCEMENT PAINT.
- SYMBOL BACKS TO BE .090" ALUMINUM UP TO 21" DIAMETER, .125" GREATER THAN 21" DIAMETER. PAINT FINISH EXTERIOR SURFACE PNC ORANGE. PAINT FINISH INTERIOR SURFACES WITH LIGHT ENHANCEMENT PAINT.
- LETTER TRIM CAP TO BE JEWELITE 1" BLUE. ATTACH WITH STAINLESS STEEL PAN HEAD SCREWS. PAINT HEADS TO MATCH.
- SYMBOL TRIM CAP TO BE JEWELITE 1" ORANGE. PAINTED PNC ORANGE. SATIN FINISH. ATTACH WITH STAINLESS STEEL PAN HEAD SCREWS. PAINT HEADS TO MATCH.
- PROVIDE WEEP HOLES WITH LIGHT SCREENS IN EACH LETTER AND SYMBOL TO MEET U.L.
- PROVIDE SURFACE MOUNTED J-BOX FOR PHOTO CELL TO REGULATE CHANNEL LETTER OPERATION. PAINT FINISH TO MATCH EXISTING WALL SURFACE. PROVIDE PASS THRU AS REQ'D FOR ELECTRICAL FEED. DO NOT USE SURFACE CONDUIT FROM LETTERS / SYMBOL.
- USE CLEAR SILICONE CAULK TO SEAL LETTERS TO WALL AT TOP TO SEAL LETTER TO WALL TO PREVENT WATER PENETRATION. SEE SUGGESTED PLACEMENT.

## GENERAL NOTES:

- ALL PAINTS TO BE TWO-PART POLY-URETHANE BY MATTHEWS, SATIN FINISH.
- ALL FILM TO BE 3M UNLESS OTHERWISE STATED.
- ALL STEEL COMPONENTS TO BE PRIMED WITH ZINC INHIBITOR (DEVCON-Z OR APPROVED EQUAL).
- ALL STRUCTURAL COMPONENTS TO BE SIZED BY A LICENSED STRUCTURAL ENGINEER TO MEET OR EXCEED ALL LOCAL, STATE, AND NATIONAL CODES.
- ALL ELECTRICAL WORK TO MEET OR EXCEED U.L. REQUIREMENTS.
- ALL EXPOSED FASTENERS TO BE PAINTED TO MATCH CABINET.
- ELECTRICAL LEADS FROM THE BACK OF ILLUMINATED LETTERS TO BE A MINIMUM OF 6'-0" LONG AS MEASURED FROM THE BACK OF THE LETTER.

## MATERIAL SPECIFICATIONS:

<b>PAIN:</b>	
PNC BLUE	- MATTHEWS MP31479
PNC LIGHT BLUE	- MATTHEWS MP23162
PNC ORANGE	- MATTHEWS MP01229
PNC SILVER METALLIC	- MATTHEWS MP18101
LIGHT ENHANCEMENT	- MP 74200SP ZAP WHITE
WHITE	- MP 6425SP SATIN HIGH DUAL WHITE
<b>VINYLS OPAQUE:</b>	
PNC BLUE	- 3M DN00499 DUAL COLOR (PERFORATED)
OPAQUE WHITE	- 3M 7725-10 (Door vinyl)
REFLECTIVE WHITE	- 3M 680-10
<b>VINYLS TRANSLUCENT:</b>	
PNC LIGHT BLUE	- 3M 3630-8037
PNC DARK BLUE	- 3M 3630-8307
PNC ORANGE	- 3M3630-3318
TRANSLUCENT WHITE	- 3M 3630-20
DIFFUSER	- 3M 3635-30

These drawings are not for construction purposes. The information contained herein is intended to express design intent only. This original design is the sole property of Blair Image Elements. It cannot be reproduced, copied or exhibited, in whole or in part, without first obtaining written consent from Blair Image Elements.



PNC  
West Pryor Development, Lot 9A  
Lees Summit, MO 64086

STORE #  
BAU531

Issue Date: 05/11/22		
Drawn By: RSF		
REV	DATE	DESCRIPTION
0	05/11/22	INITIAL RELEASE
1	05/12/22	ENLARGED ELEVATIONS

## S2-S3 DETAIL

Rev: 1  
Date: 05/12/22  
Doc #: AD-PNC-1000310-220511-1  
Blair Project #: 1000310  
Blair Sales Order #: N/A

Page 9

Blair Image Elements  
5107 Kissell Avenue  
Altoona, PA 16601  
P: (814) 949.8287  
blairimage.com

**blair**  
IMAGE ELEMENTS™