

10/13/2022 9:34:17 AM C:\Local\2021\2218000\_Deer Brook Retail Renovations\_SBI MEP\_2021\_CENTRAL\_p.kpatro.rvt

© COPYRIGHT 2022 ICON ARCHITECTURE

H

G

F

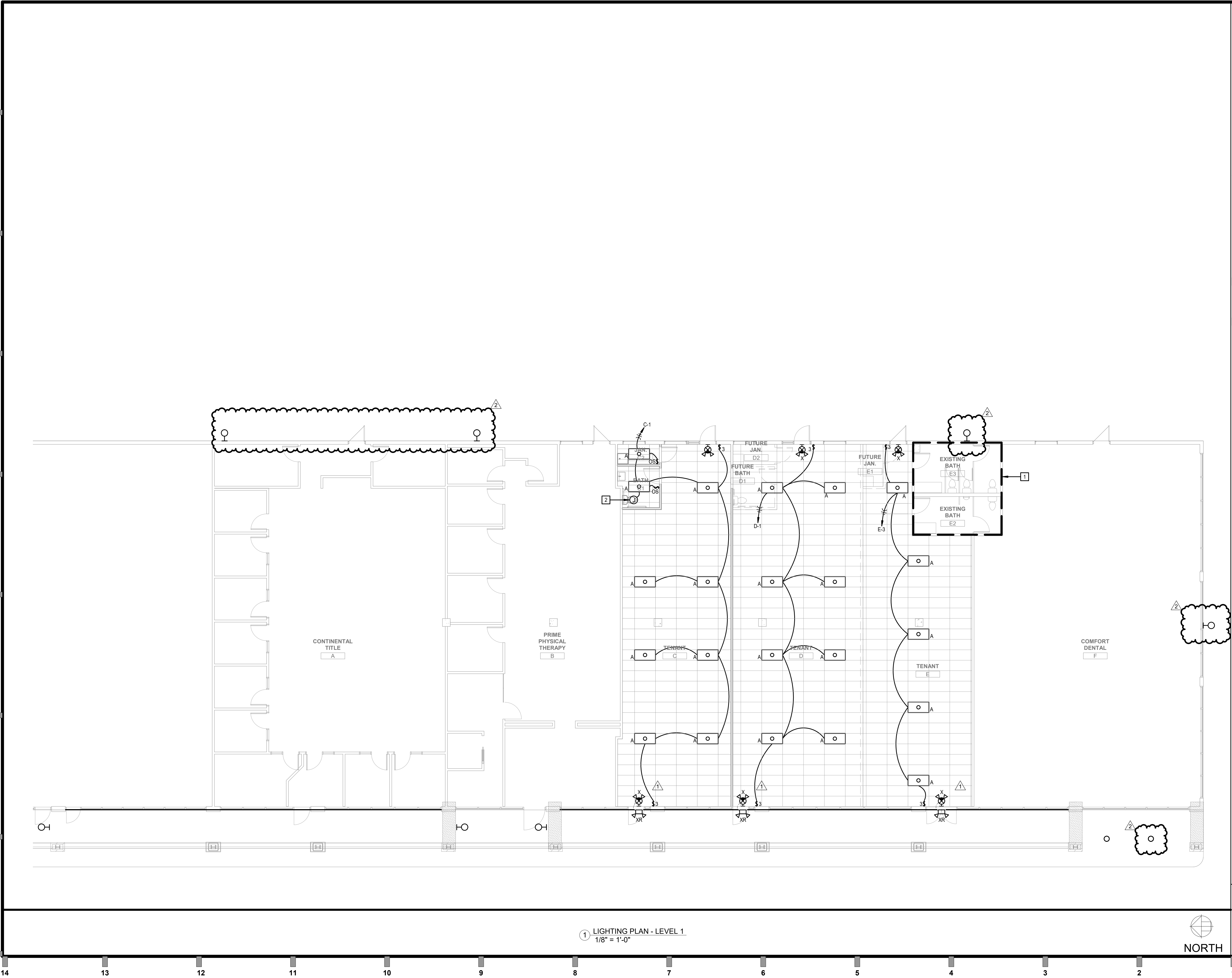
E

D

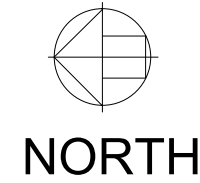
C

B

A



1 LIGHTING PLAN - LEVEL 1  
1/8" = 1'-0"

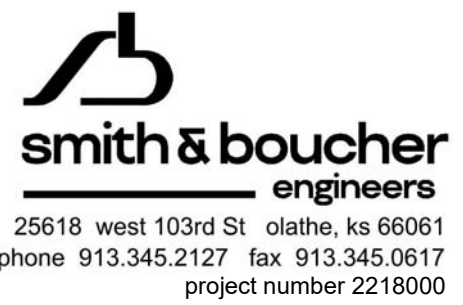


GENERAL NOTES:

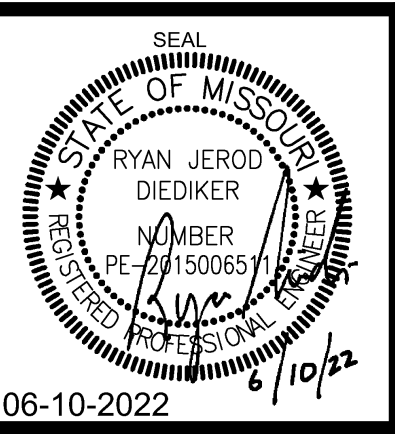
1. REFER TO M/E SCHEDULES AND DETAILS FOR MECHANICAL EQUIPMENT CIRCUITING INFORMATION.
2. FIRESTOP ALL CONDUIT PENETRATIONS THROUGH FIRE ROUTED WALLS AND FLOORS AFTER INSTALLATION IS COMPLETE.
3. WHERE ANY DEVICE JUNCTION BOXES ARE RECESSED WITHIN OPPOSITE SIDES OF A FIRE RATED WALL AND ARE WITHIN 24" OF EACH OTHER MEASURED HORIZONTALLY, FURNISH AND INSTALL AN INTUMESCENT MOLDABLE FIRE STOP PUTTY PAD AROUND EACH JUNCTION BOX.
4. CIRCUIT ALL EMERGENCY BALLASTS, EMERGENCY FIXTURES AND EXIT SIGNS WITH AN UNSWITCHED HOT CONDUCTORS.
5. 120V BRANCH CIRCUITING SHALL BE AS FOLLOWS: (UNLESS NOTED OTHERWISE).  
  
0'-100' = 12 AWG.  
101'-150' = 10AWG.  
151'-250' = 8AWG.

PLAN NOTES:

- 1 CONNECT EXISTING LIGHT FIXTURES IN THIS BATHROOM TO NEW PANEL 'E' CIRCUIT #1. REFER TO PANEL SCHEDULE FOR ADDITIONAL INFORMATION.
- 2 PROVIDE ELECTRIC CONNECTION TO EXHAUST FAN. REFER TO MECHANICAL PLANS & SCHEDULE FOR ADDITIONAL INFORMATION.



25618 west 103rd St. olathe, ks 66061  
phone 913.345.2127 fax 913.345.0617  
project number 2218000



PERMIT SET

DEER BROOK PLAZA  
1121 & 1151 NE RICE ROAD  
LEE'S SUMMIT, MO 64086-6788



506 Grand Boulevard  
Kansas City, MO 64106  
p:816.221.0250 f:816.221.0251

REVISIONS

- |   |                      |          |
|---|----------------------|----------|
| 1 | BUILDING PLAN REVIEW | 06-22-22 |
| 2 | LIGHT FIXTURE REV.   | 10-13-22 |

ISSUE DATE

06-10-22

PROJECT NUMBER

2022-000

SHEET NUMBER

E1.11

Lighting Plan - Level 1