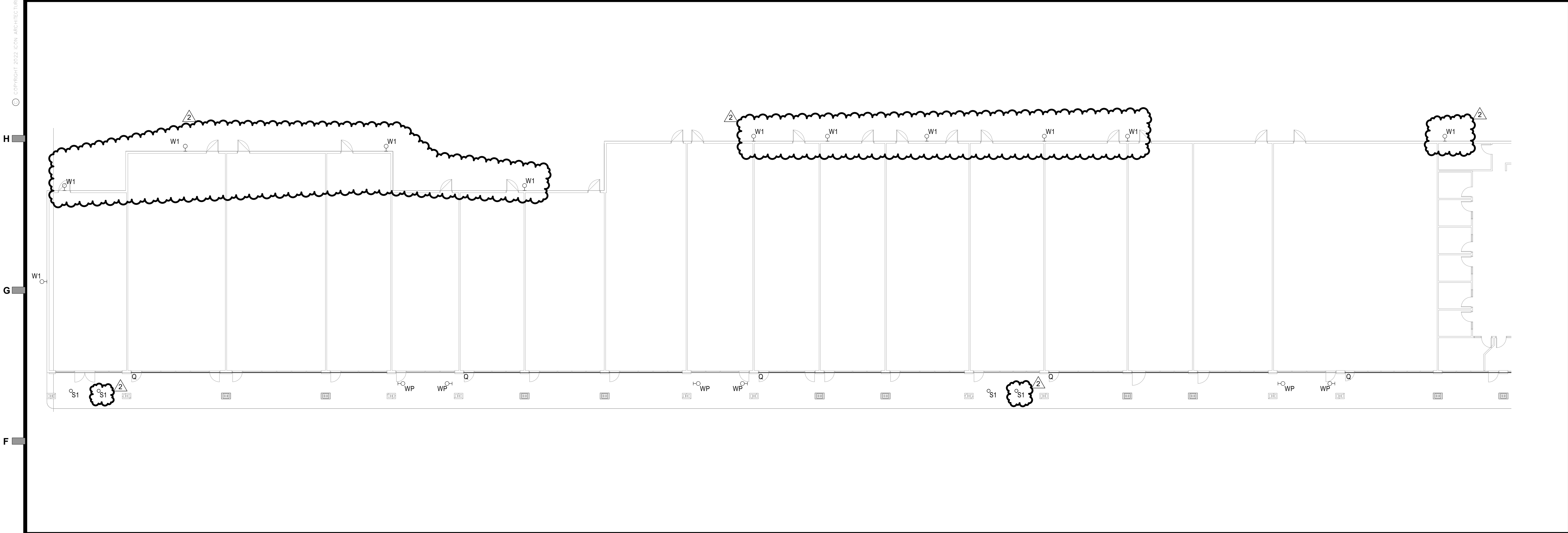
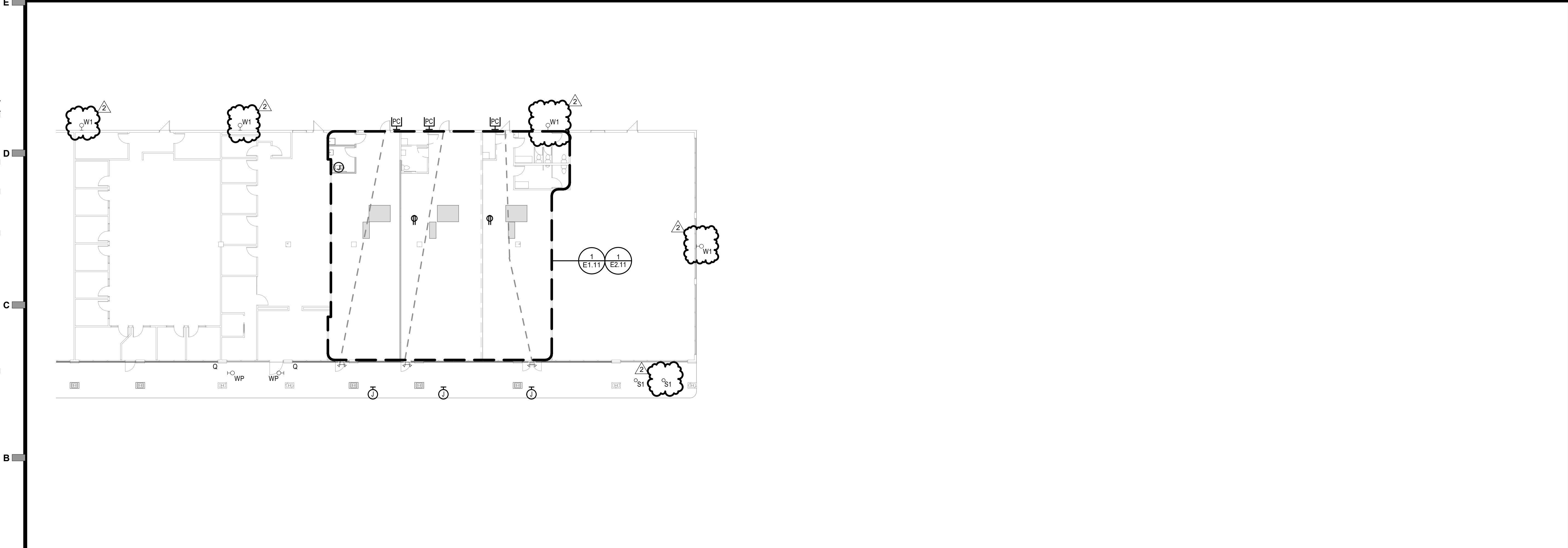


10/13/2022 9:34:14 AM C:\local\2021\2218000\_Deer Brook Retail Renovations\_SBM MEP\_2021\_CENTRAL\_pkpatro.rvt

© COPYRIGHT 2022 ICON ARCHITECTURE



1 OVERALL ELECTRICAL PLAN - LEVEL 1  
1/16" = 1'-0"



2 OVERALL ELECTRICAL PLAN - LEVEL 1  
1/16" = 1'-0"



GENERAL NOTES:

1. REFER TO M/E SCHEDULES AND DETAILS FOR MECHANICAL EQUIPMENT CIRCUITING INFORMATION.
2. FIRESTOP ALL CONDUIT PENETRATIONS THROUGH FIRE ROUTED WALLS AND FLOORS AFTER INSTALLATION IS COMPLETE.
3. WHERE ANY DEVICE JUNCTION BOXES ARE RECESSED WITHIN OPPOSITE SIDES OF A FIRE RATED WALL AND ARE WITHIN 24" OF EACH OTHER MEASURED HORIZONTALLY, FURNISH AND INSTALL AN INTUMESCENT MOLDABLE FIRE STOP PUTTY PAD AROUND EACH JUNCTION BOX.
4. CIRCUIT ALL EMERGENCY BALLASTS, EMERGENCY FIXTURES AND EXIT SIGNS WITH AN UNSWITCHED HOT CONDUCTORS.
5. 120V BRANCH CIRCUITING SHALL BE AS FOLLOWS: (UNLESS NOTED OTHERWISE).  
  
0'-100' = 12 AWG.  
101'-150' = 10AWG.  
151'-250' = 8AWG.
6. ALL EXTERIOR LIGHTING IS REPLACED 1 FOR 1 WITH NEW LED. REFER TO LIGHT FIXTURE SCHEDULE FOR ADDITIONAL INFORMATION. MAINTAIN EXISTING CIRCUITRY.



PERMIT SET

DEER BROOK PLAZA  
1121 & 1151 NE RICE ROAD  
LEE'S SUMMIT, MO 64086-6788

ICON  
architecture + fabrication

506 Grand Boulevard  
Kansas City, MO 64106  
p:816.221.0250 f:816.221.0251

REVISIONS	
2 LIGHT FIXTURE REV.	10-13-22
ISSUE DATE	
06-10-22	
PROJECT NUMBER	
2022-000	
SHEET NUMBER	
E1.10	

Overall Electrical Plan - Level 1

smith & boucher  
engineers  
25618 west 103rd St. olathe, ks 66061  
phone 913.345.2127 fax 913.345.0617  
project number 2218000