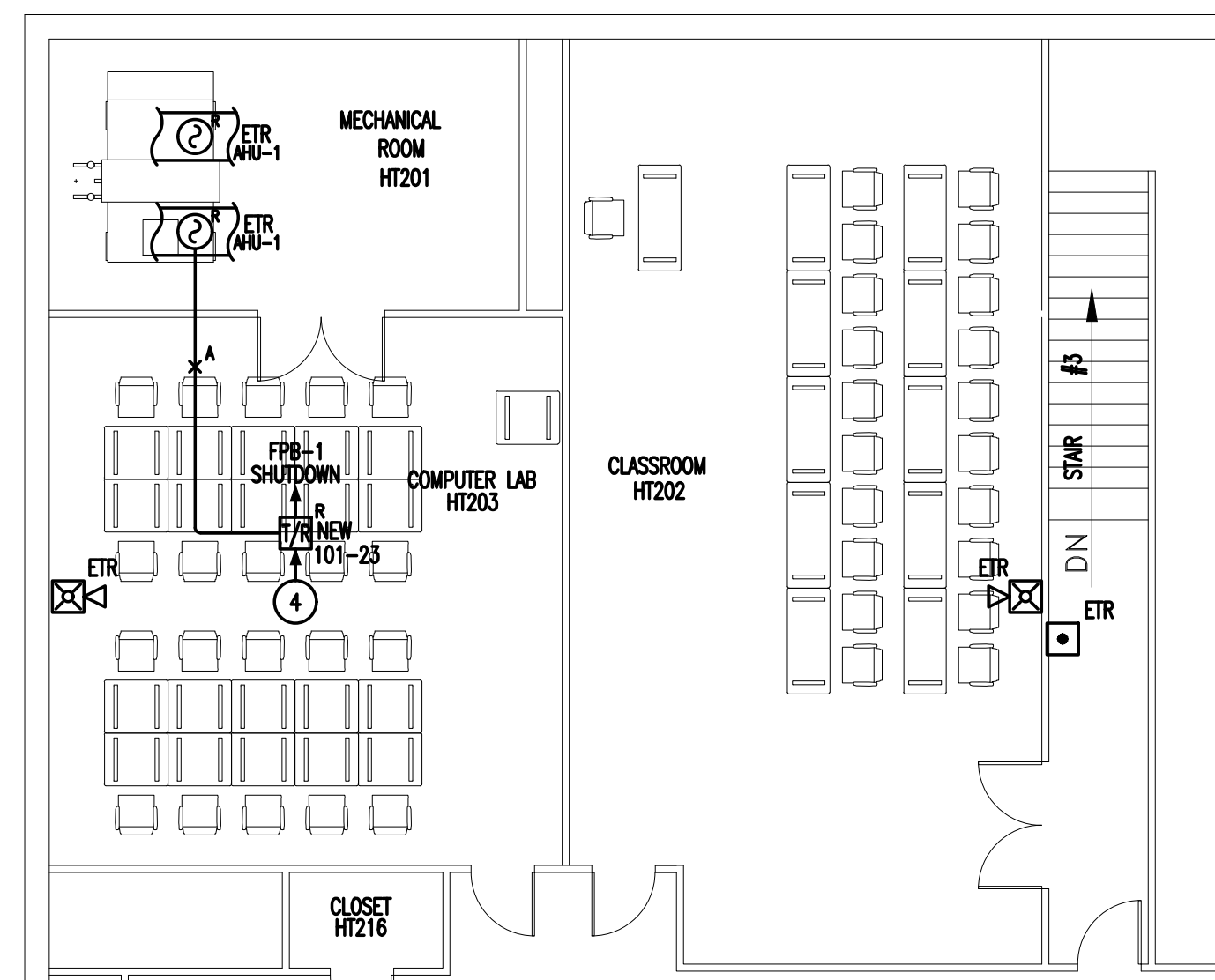


PARTIAL FIRST FLOOR DETECTION PLAN VIEW
SCALE: 1/8"=1'-0"



PARTIAL SECOND FLOOR DETECTION PLAN VIEW
SCALE: 1/8"=1'-0"

PLAN NOTES

- REPLACE EXISTING DLC IN MAIN FIRE ALARM PANEL WITH XDLC TO ACCOMMODATE NEW DEVICE TYPES. PROGRAM NEW INITIATING DEVICE DIALER GROUPS TO NOTIFY CENTRAL STATION. ADD NEW ZIC-88 STROBE CARD CARD TO EXISTING PANEL FOR NEW STROBE CIRCUIT STS. WIRE NEW STROBE CIRCUIT TO EXISTING SURGE MODULE IN EXISTING SURGE SUPPRESSION PANEL.
- TIE THE NEW MANUAL PULL STATIONS INTO EXISTING INITIATING DEVICE CIRCUIT AT LOCATION SHOWN. PROGRAM ALL PULL STATIONS PRIOR TO INSTALLING.
- RELOCATE EXISTING SPEAKER STROBE TO LOCATION SHOWN. EXTEND EXISTING SPEAKER AND STROBE CIRCUITS TO NEW DEVICE LOCATION AND WIRE TO MAINTAIN CIRCUIT SUPERVISION. EXTEND SPEAKER CIRCUIT TO NEW SPEAKER STROBES IN EXPANSION AREA AND WELDING ROOM.
- INSTALL NEW XTRI-R RELAY MODULE TO BE USED FOR FPB SHUTDOWN. TIE NEW RELAY INTO EXISTING INITIATING DEVICE LOOK AT EXISTING DUCT DETECTOR AS SHOWN.

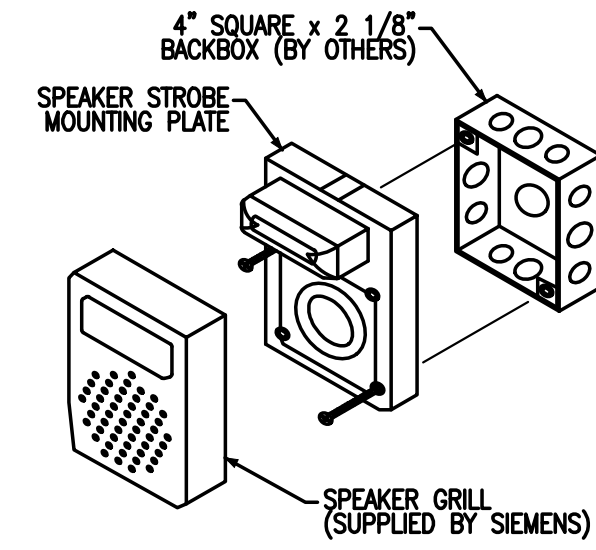
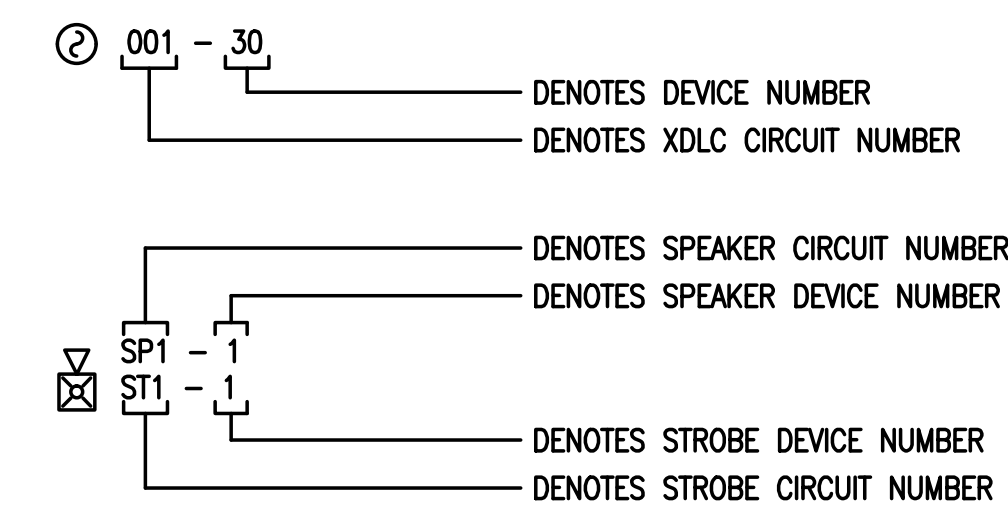
SYMBOL LEGEND

SYM.	DESCRIPTION	MODEL	BACK BOX
	ADDRESSABLE INTERFACE MODULE W/ RELAY	XTRI-R	4" SQ. 2 1/8" DEEP OR DBL GANG 3.5" DEEP
	MANUAL PULL STATION	XMS-D	3.5" DEEP SINGLE GANG
	FIRE ALARM SPEAKER STROBE	SEH-MC-R	4" SQUARE 2 1/8" DEEP
	DUCT SMOKE DETECTOR	EXISTING	EXISTING
ETR	EXISTING DEVICE TO REMAIN	NA	NA
NEW	NEW DEVICE TO BE ADDED	NA	NA

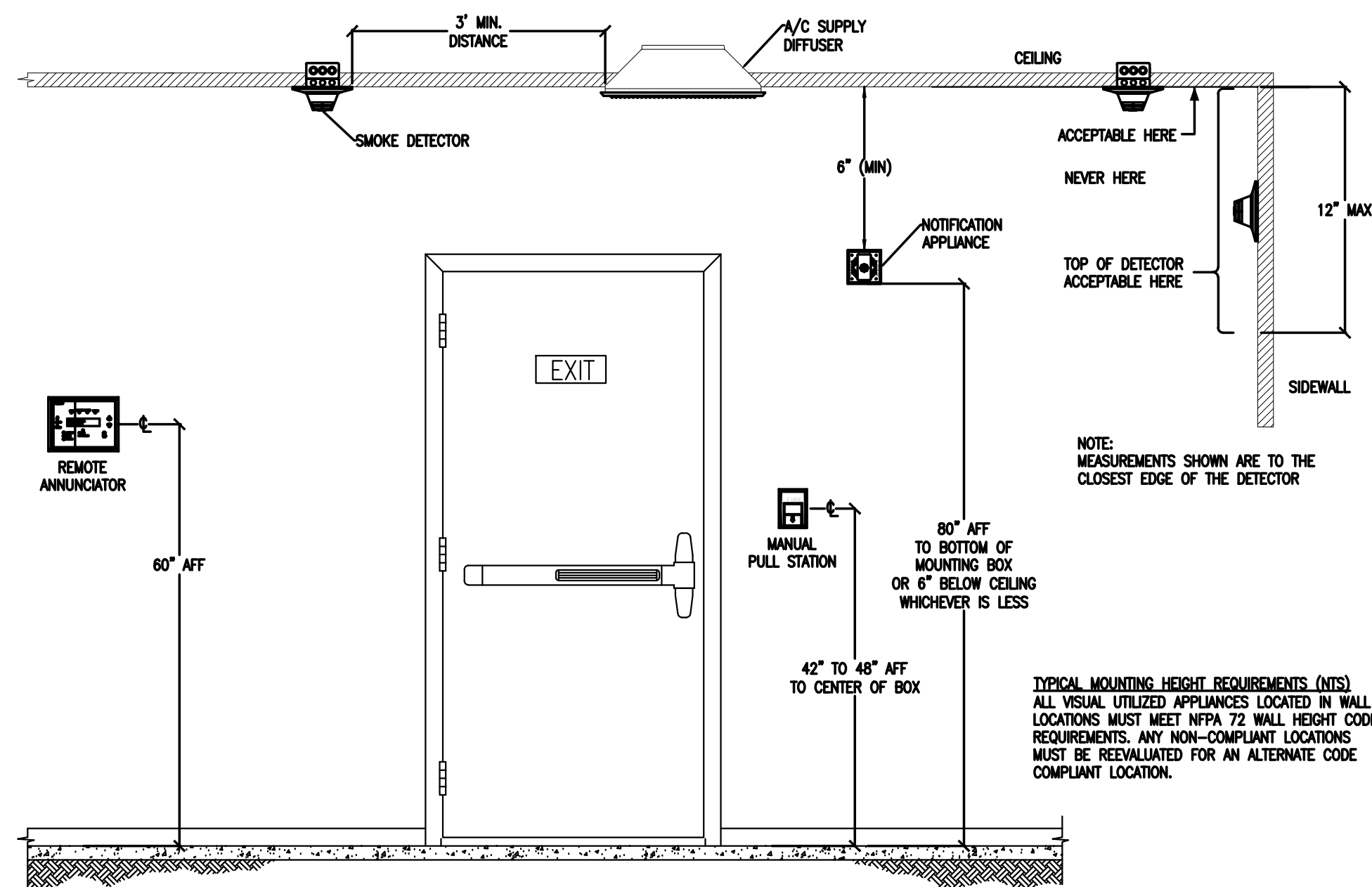
WIRE LIST & LEGEND

SYM.	DESCRIPTION	AWG
A	DETECTION CIRCUIT (TWISTED PAIR)	18
B	SPEAKER (TWISTED PAIR)	14
C	STROBE (TWISTED PAIR)	14

DEVICE I.D. NOMENCLATURE



SEH SERIES WALL SPEAKER STROBE MOUNTING DETAIL

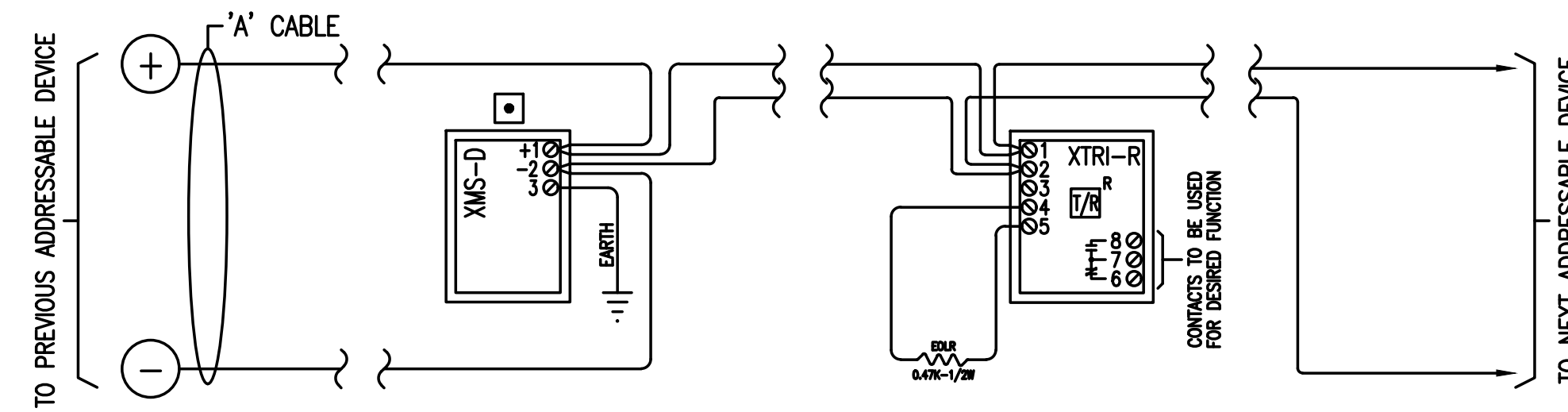


TYPICAL DEVICE MOUNTING DETAILS

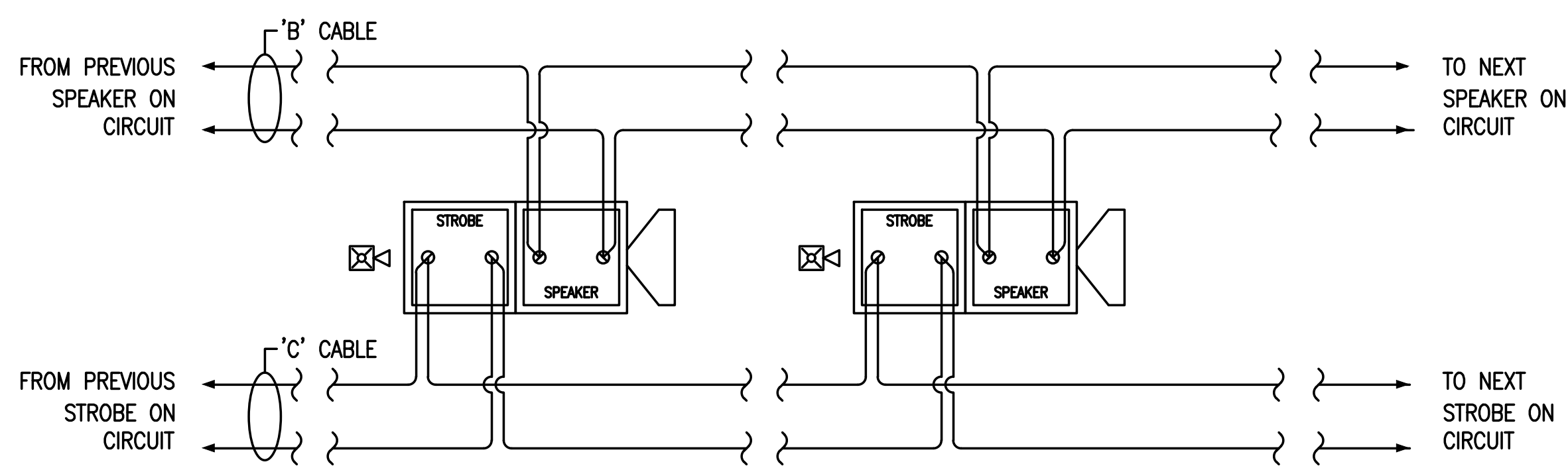
XTRI-R WIRING

NOTES:

- All supervised switches must be held closed and/or open for at least a quarter of a second in order to guarantee detection.
- Use UL listed EOL Model TB-EOL with 0.47K, 1% 1/2W resistor, P/N A5000073045. Order Model TB-EOL separately.
- Supervised switch S1 and S2 are on the same programmed address.
- Non-shield cable can be used for input.
- The supervised switches have the following ratings:
Voltage maximum: 27 VDC
Current maximum: 6mA during polling
Contact resistance maximum: 10 ohms
Maximum cable length: 200 feet (18 AWG)
Cable to bus: 0.02uF
Cable to line: 0.04uF
Max line size: 14 AWG
Min line size: 18 AWG
- Relay contacts are rated: Resistive: 4A, 125 VAC
Inductive: 3.5A, 120 VAC (0.6PF.F.)
2.0A, 120 VAC (0.4PF.F.)
2.0A, 120 VAC (0.35PF.F.)
2.0A, 30 VDC (0.6PF.F.)
2.0A, 30 VDC (0.35PF.F.)
- In supervisory: XTRI-R draws 750uA



TYPICAL ADDRESSABLE DEVICE CIRCUIT WIRING



TYPICAL SPEAKER/STROBE CIRCUIT WIRING

SIEMENS CONTACT INFORMATION

Steve Smith
PROJECT MANAGER
PHONE: (913) 954-7869
EMAIL: smithss@siemens.com

SCOPE OF WORK

Expansion of the the Sports Training Building at the Maple Woods Campus to add a new Fitness Center to the building. All new fire alarm devices shall be connected to existing spare fire alarm circuits in existing fire alarm panel.

BUILDING INFORMATION

Occupancy Type: B, S

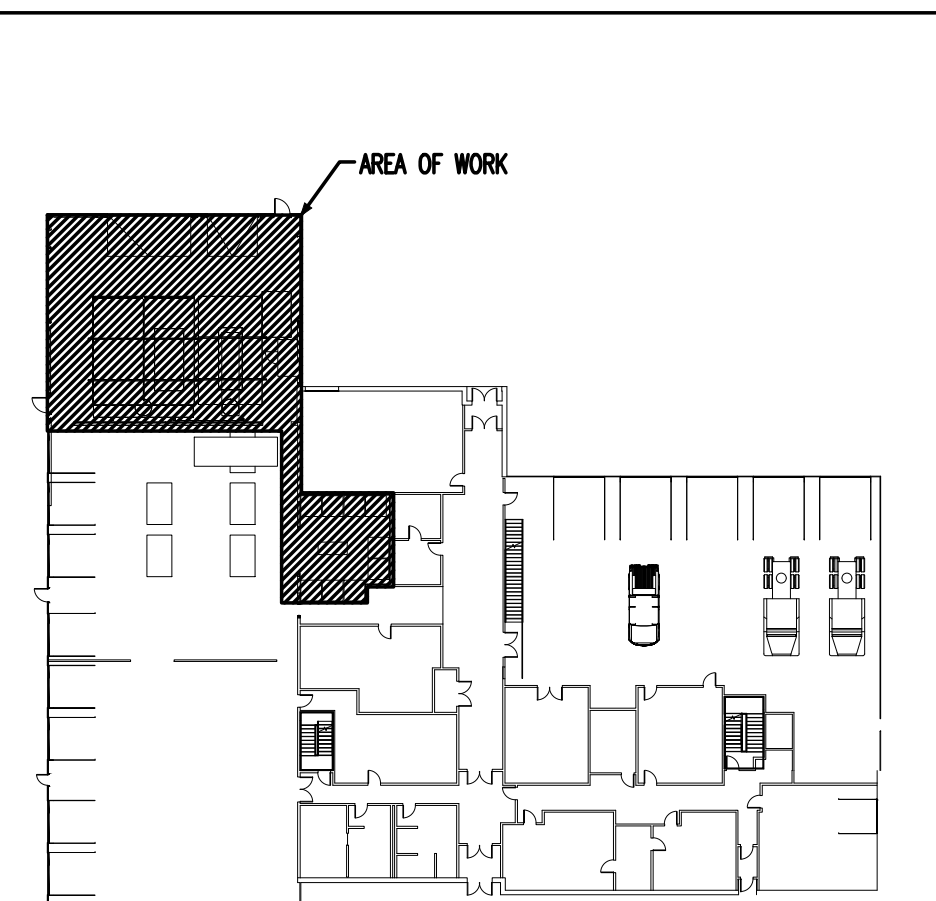
Construction Type: V-B

Automatic Sprinkler System: Addition Fully Sprinkled

Building Area Total: 29,442 SF

Building Area Addition: 3,068 SF Approx

INSTALLATION ACCORDANCE WITH THE FOLLOWING CODES:
International Building Code (IBC) - 2018
National Electric Code - (NFPA 70) - 2011
National Fire Alarm & Signaling - (NFPA 72) - 2010
CIRCUIT PATHWAY DESIGNATION: CLASS B



1ST FLOOR

2ND FLOOR

KEY PLANS

SIEMENS

Siemens Building Technologies, Inc.

8066 Flint Street
Lenexa, Kansas 66214

Tel: (913) 492-3640
Fax: (913) 492-3639

DRAWINGS PREPARED FOR:
MCC - LONGVIEW - HIGH TECHNOLOGY
500 SW LONGVIEW ROAD
LEE'S SUMMIT, MO 64081

SECOND FLOOR FIRE ALARM PLAN

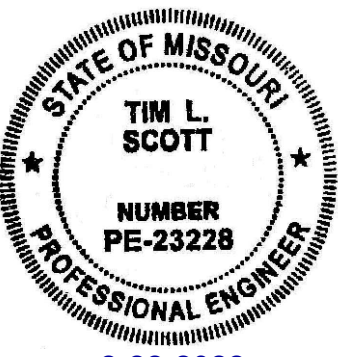
DRAWN BY:
C. STACH

SCALE:
AS SHOWN

CHECKED BY:
K. BROWN

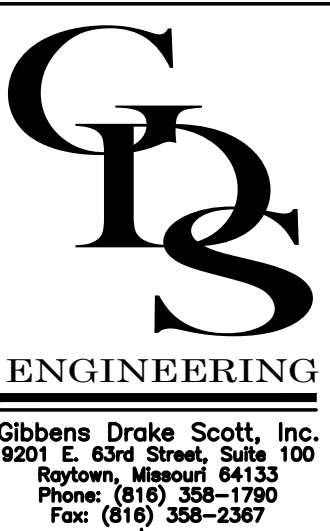
SHEET NO.
1

OF 3 SHEETS



TIM L. SCOTT
LICENSE # E-23228
PRINTED COPIES OF THIS DOCUMENT ARE NOT CONSIDERED SIGNED AND SEALED AND THE SIGNATURE MUST BE VIEWED ON ANY ELECTRONIC COPIES

MISSOURI STATE CERTIFICATE OF AUTHORITY #000816



Gibbs & Drake, Inc.
8201 E. 63rd Street, Suite 100
Raytown, Missouri 64133
Phone: (816) 358-1790
Fax: (816) 358-2367
www.gdr-inc.com

THIS DRAWING COPYRIGHT © 2019