

By. JWH Date: 04/27/2022

C1

CANTILEVER DETAIL
No reinforcement required

APA Rated 23/32" OSB
(or equal) closure, or as
required by code

As
Designed

LPI
Blocking*

* LPI SolidStart Rim Board, LVL or LSL
may be substituted for the LPI Blocking

RELEASE FOR CONSTRUCTION
AS NOTED FOR PLAN REVIEW
DEVELOPMENT SERVICES
LEE'S SUMMIT, MISSOURI
10/04/2022

GENERAL NOTES

1. FLOOR JOISTS TO BE 9-1/2" LPI20 PLUS @ 16" O.C. TYP. UNLESS OTHERWISE NOTED
2. ALL BLOCKING PER STRUCTURAL PLAN
3. LOADING TO BE 40 PSF LL - 15 PSF DL

AMERHART

400 MARSHVIEW DRIVE
SUN PRAIRIE, WI 53590
1-800-879-7123
1-608-834-2253

ADDITIONAL NOTES

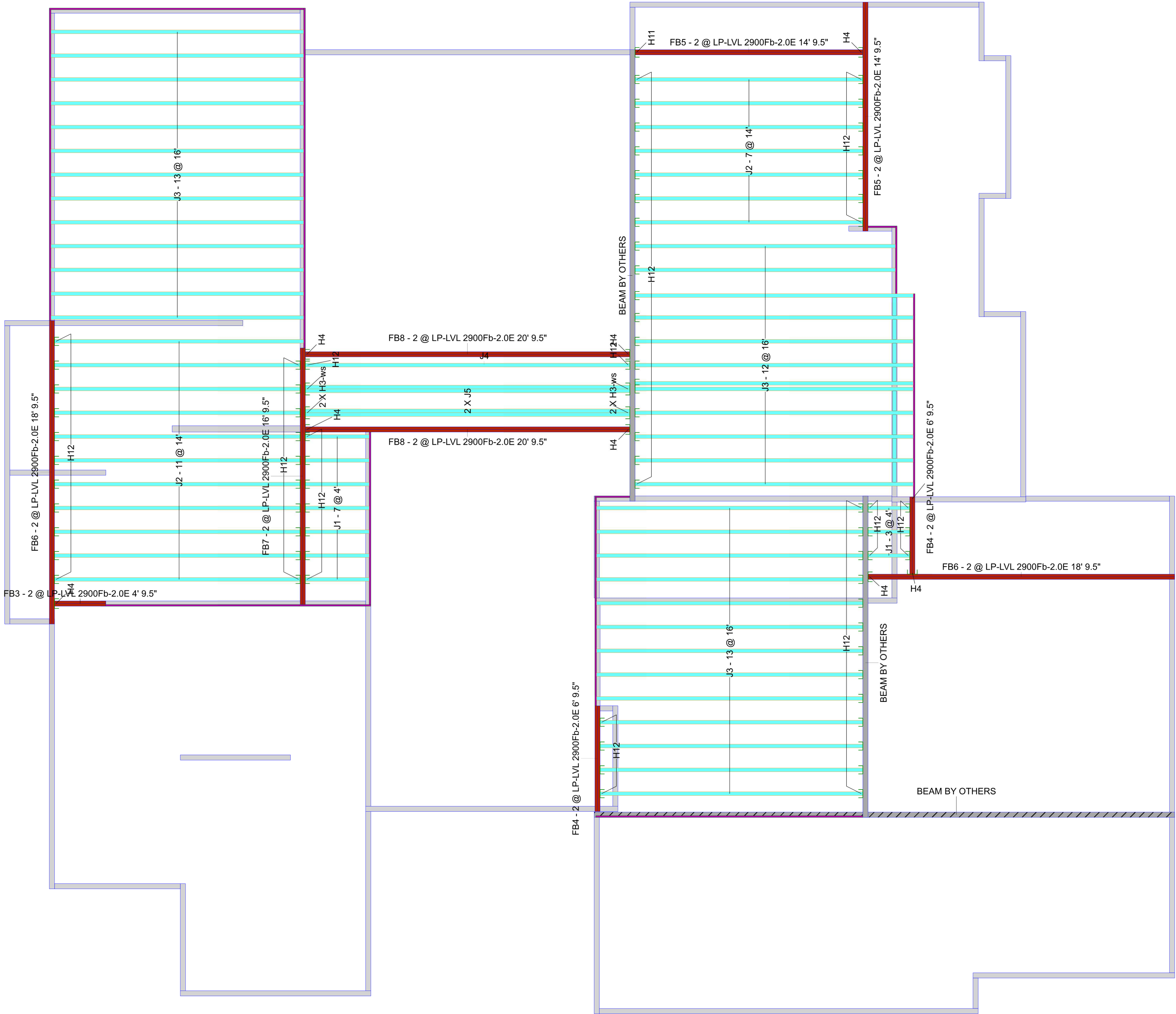
1. ALWAYS READ PRODUCT BROCHURE BEFORE INSTALLATION OF EWP PRODUCTS.
2. REFER TO HOLE CHARTS PRIOR TO DRILLING PRODUCT.
3. THIS DOCUMENT IS INTENDED SOLEY AS A PLACEMENT PLAN. IT IS TO BE REVIEWED BY THE ENGINEER OF RECORD AND MUST MEET HIS/HER APPROVAL PRIOR TO INSTALLATION OF OUR PRODUCT.
4. THIS DOCUMENT IS NOT TO BE USED AS A REPLACEMENT FOR YOUR ORIGINAL STRUCTURAL PLANS.
5. LAYOUT, QUANTITY AND LENGTH TO BE VERIFIED BY CONTRACTOR.
6. IF WALLS ARE SPECIFIED IN THIS QUOTE, CONTRACTOR MUST VERIFY ALL DIMENSIONS AND ROUGH OPENING SIZES PRIOR TO CONSTRUCTION OF WALL. ROUGH OPENING SIZES ARE ESTIMATES ONLY. TALL WALL IS DESIGNED FOR VERTICAL LOADS AND DIRECT WIND LOADS ONLY. INLINE LATERAL BRACING OF THE BUILDING DIAPHRAGM IS TO BE ACCOUNTED FOR BY THE BUILDING DESIGNER/ENGINEER.

Van Deurzen and Associates, P.A.
11011 King Street, Suite 130
Overland Park, KS 66210
(913) 451-6305 FAX: (913) 451-1021

This shop drawing has been reviewed for conformance with the design concept and information given in the Contract Documents.

- ☒ Reviewed with no exceptions noted.
- ☐ Reviewed as noted.
- ☐ Returned for correction.
- ☐ Not Reviewed.

By: JWH Date: 04/27/2022



SECOND FLOOR JOIST PLACEMENT PLAN
LOT 105 - WOODSIDE RIDGE
TL22048ATH

Second Floor

I Joist

Label	Description	Width	Depth	Qty	Plies	Pcs	Length
J5	LPI 20 Plus	2.5	9.5	2	2	4	20-0-0
J4	LPI 20 Plus	2.5	9.5			1	20-0-0
J3	LPI 20 Plus	2.5	9.5			38	16-0-0
J2	LPI 20 Plus	2.5	9.5			18	14-0-0
J1	LPI 20 Plus	2.5	9.5			10	4-0-0

Blocking

Label	Description	Width	Depth	Qty	Plies	Pcs	Length
BLK2	LPI 20 Plus	2.5	9.5			8	2-0-0

Rim Board

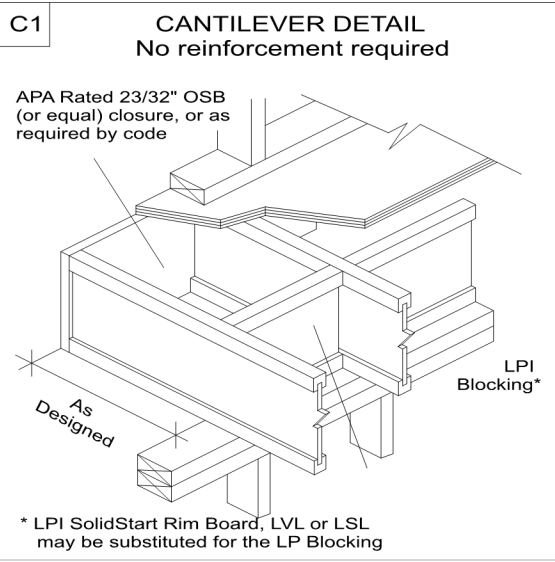
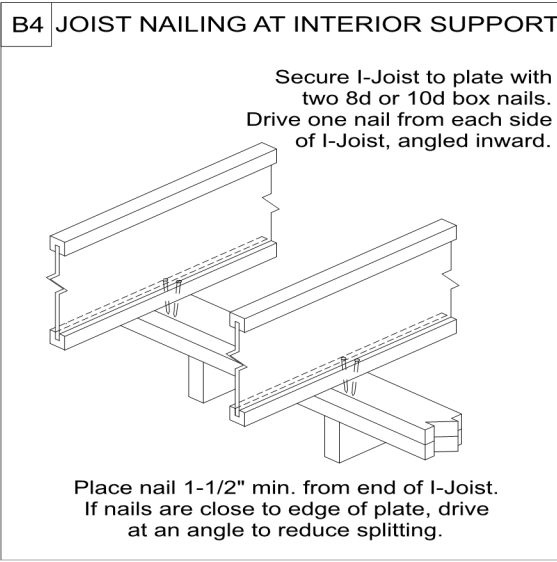
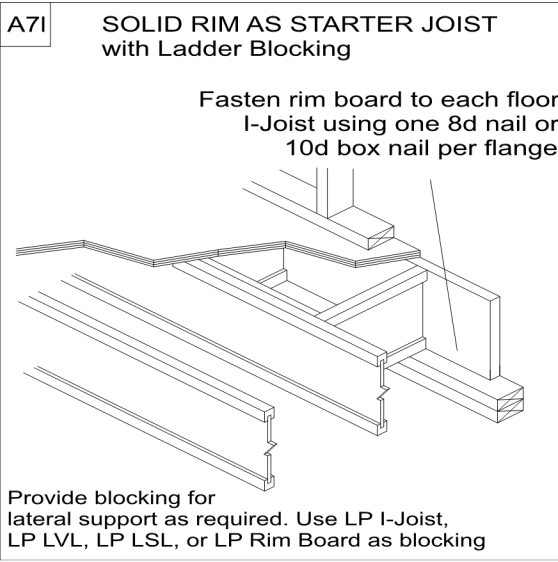
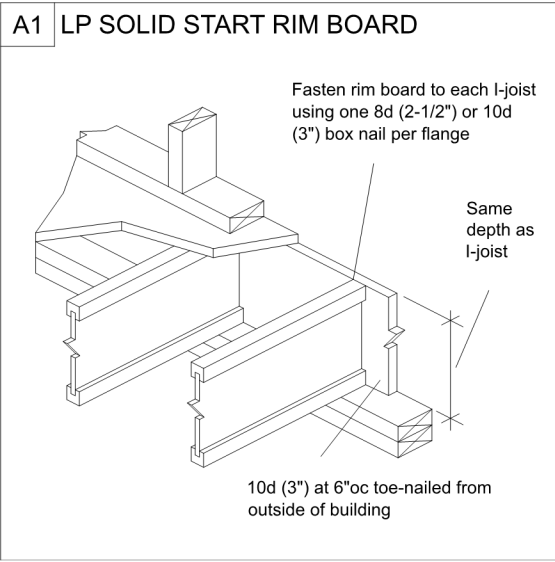
Label	Description	Width	Depth	Qty	Plies	Pcs	Length
R2	LP APA Rated OSB 1.125 X 9.5	1.125	9.5			11	12-0-0

LVL/LSL

Label	Description	Width	Depth	Qty	Plies	Pcs	Length
FB8	LP-LVL 2900Fb-2.0E	1.75	9.5	2	2	4	20-0-0
FB6	LP-LVL 2900Fb-2.0E	1.75	9.5	2	2	4	18-0-0
FB7	LP-LVL 2900Fb-2.0E	1.75	9.5	1	2	2	16-0-0
FB5	LP-LVL 2900Fb-2.0E	1.75	9.5	2	2	4	14-0-0
FB4	LP-LVL 2900Fb-2.0E	1.75	9.5	2	2	4	6-0-0
FB3	LP-LVL 2900Fb-2.0E	1.75	9.5	1	2	2	4-0-0

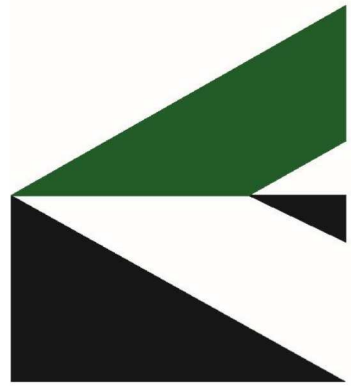
Hanger

		Beam/Girder			Supported Member	
Label	Pcs	Description	Skew	Slope	fasteners	fasteners
H3	4	HU310-2			14 16d	6 10d
H4	8	HHUS410			30 16d	10 16d
H11	1	HUCQ410-SDS			12 SDS 1/4x2 1/2	6 SDS 1/4x2 1/2
H12	79	IUS2.56/9.5 (Min)			8 10d	



Layout Name
LOT 105 - WOODSIDE
RIDGE

Amerhart



Project	TL22048ATH
Created	December 13, 2021
Designer	Thomas Hamrick
Layout Name	LOT 105 - WOODSIDE RIDGE
Product	LP LUMBER
Date	10/04/2022