



PHASE I FLOOR PLAN




PLAN NOTES

DISCLAIMER

I, CHRISTOPHER R. BELL, A REGISTERED PROFESSIONAL ENGINEER OF THE DESIGN GROUP OF
DO HEREBY ACCEPT PROFESSIONAL RESPONSIBILITY AS REQUIRED BY THE PROFESSIONAL REGISTRATION
LAWS OF THIS STATE FOR THE ARCHITECTURAL DRAWINGS (INCLUDING CONSISTING OF SHEETS A-2 THRU A-4)
I HEREBY DISCLAIM RESPONSIBILITY FOR ALL OTHER DRAWINGS IN THE CONSTRUCTION DOCUMENT PACKAGE
THAT BEING THE RESPONSIBILITY OF OTHER DESIGN PROFESSIONALS WHOSE NAMES AND SIGNED DOCUMENTS MAY
APPEAR ELSEWHERE IN THE CONSTRUCTION DOCUMENT PACKAGE.

Christopher R. Bell



06-14-22

CHRISTOPHER R. BELL - ARCHITECT
MO# A-6275

ROSE
DESIGN GROUP

ARCHITECTS ■ PLANNERS

A Division of Rose Design Build


913-782-0777 FAX: 913-782-0998
P.O. BOX 100 OLATHE, KS 66051

KANSAS STATE CERTIFICATE OF
AUTHORITY # A-83 www.BuiltWithRose.com



CRASH CHAMPION
COLLISION REPAIR TEAM

**PROPOSED BODY SHOP BUILDING FOR:
CRASH CHAMPIONS
451 SE OLDHAM PARKWAY UNIT C
LEE'S SUMMIT, MISSOURI**

NO.	DESCRIPTION	DATE
	ADD A/C	09-15-22

PROJECT NUMBER	22009
DATE ISSUED:	06 / 14 / 22
SHEET NUMBER	
A3.0	

WALL SECTIONS

Sep 22, 2022 -- 3:58pm -- USER ScottGroshans
C:\Users\ScottGroshans\OneDrive\Desktop\5BY5\ACTIVE PROJECTS\202200038 Crash Champions Lees Summit -- Rose\Bases-CAO\202200038 MECH.dwg
CONSTRUCTION OF THIS DRAWING IS THE PROPERTY OF 5BY5 ENGINEERS. IT IS NOT TO BE COPIED OR REPRODUCED WITHOUT THE EXPRESS WRITTEN PERMISSION OF 5BY5 ENGINEERS. INFORMATION CONTAINED HEREIN WILL BE USED ADVERSELY TO 5BY5 ENGINEERS, INC. ALL RIGHTS RESERVED.

LINE TYPES LEGEND:

- NEW
- - - NEW - ON ROOF
- - - EXISTING
- - - EXISTING - ON ROOF
- - - DEMOLITION

DUCTWORK LEGEND:

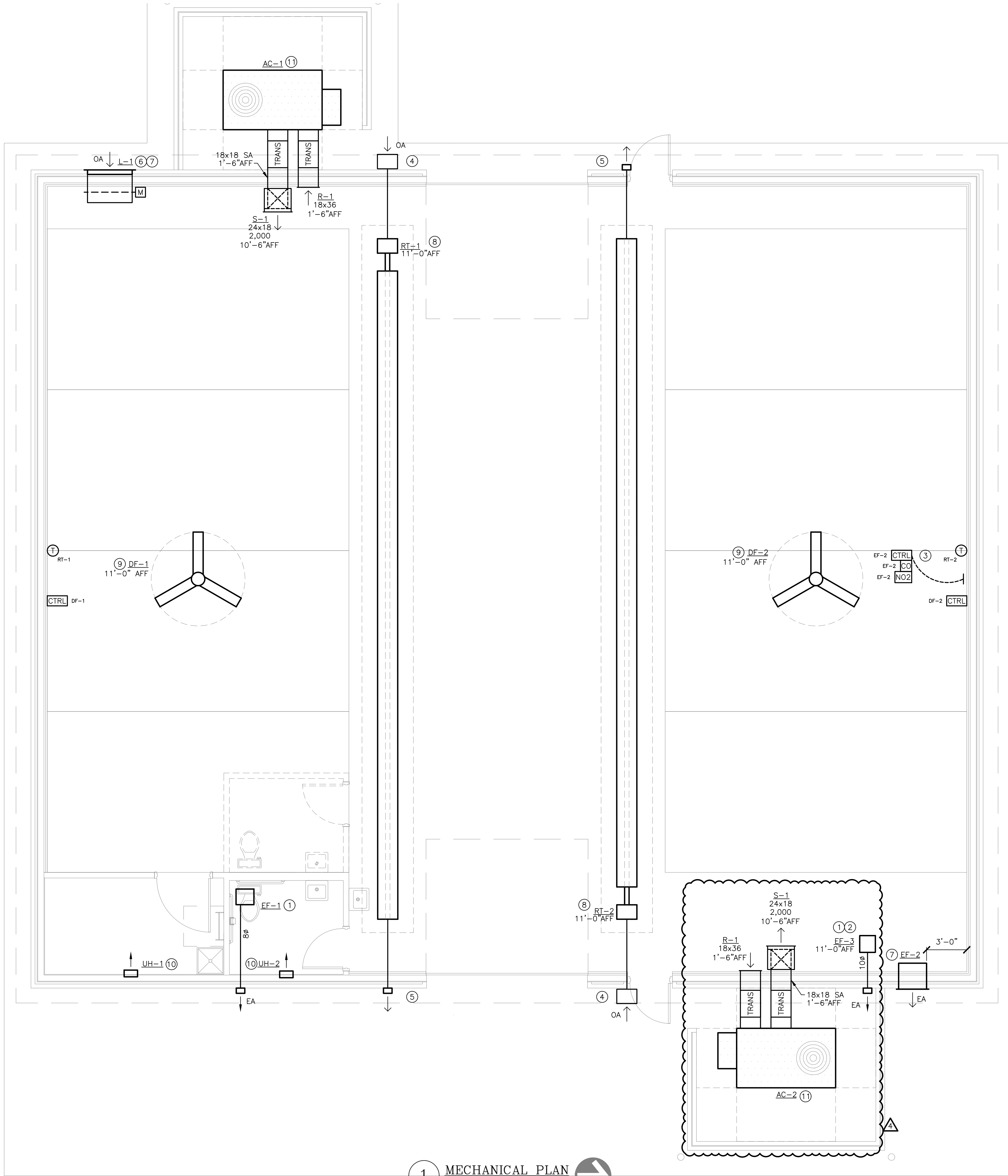
- DUCT (SINGLE LINE)
= DUCT (DOUBLE LINE)
○ → ROUND O/A OR S/A DOWN
⊗ → ROUND O/A OR S/A UP
○ → ROUND E/A OR R/A DOWN
⊗ → ROUND E/A OR R/A UP
▭ → RECTANGULAR O/A OR S/A DOWN
▭ → RECTANGULAR O/A OR S/A UP
▭ → RECTANGULAR E/A OR R/A DOWN
▭ → RECTANGULAR E/A OR R/A UP
⊗ O/A OR S/A DIFFUSER
▭ E/A OR R/A GRILLE
⊗ → AIR DEVICE WITH FLEX DUCT CONNECTION
⊗ → AIR DEVICE WITH HARD DUCT CONNECTION
⊗ → FLEXIBLE CONNECTION TO EQUIPMENT
↓ DUCT BREAK/CONTINUATION
= MANUAL BALANCING DAMPER
M MOTOR-OPERATED DAMPER
⊗ BACKDRAFT DAMPER
F FIRE DAMPER
S FIRE/SMOKE DAMPER
S SMOKE DAMPER
T THERMOSTAT
CO CARBON MONOXIDE SENSOR
CTRL CONTROLLER
NO2 NITROGEN DIOXIDE SENSOR

ANNOTATION LEGEND:

- ABC-1 EQUIPMENT / FIXTURE TAG
○ PLAN NOTE
⊗ CONNECT TO EXISTING
→ AIR FLOW DIRECTION
S-1 G/R/D TAG
80 NECK SIZE
300 AIR FLOW (CFM)

ABBREVIATIONS LEGEND:

- AFF ABOVE FINISHED FLOOR
APD AIR PRESSURE DROP
CFM CUBIC FEET PER MINUTE
EA EXHAUST AIR
EF EXHAUST FAN
ESP EXTERNAL STATIC PRESSURE
FPM FEET PER MINUTE
HC HEATING CAPACITY
HP HORSEPOWER
IN.WG INCHES WATER GAUGE
MAX MAXIMUM
MBH 1,000 BTUH
MIN MINIMUM
NC NOISE CRITERIA
OA OUTDOOR AIR
QTY QUANTITY
TSP TOTAL STATIC PRESSURE
VEL VELOCITY



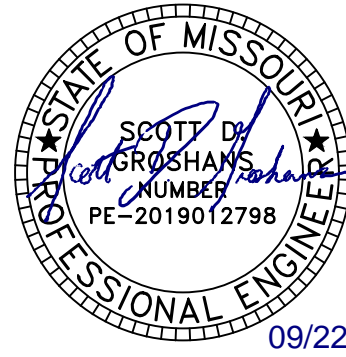
1 MECHANICAL PLAN
SCALE: 1/4" = 1'-0"

MECHANICAL PLAN NOTES:

- ROUTE EXHAUST DUCT OF SIZE INDICATED ON PLAN FROM EXHAUST FAN THROUGH WALL AS SHOWN. PROVIDE WALL PENETRATION AND VENT CAP PER MANUFACTURER'S RECOMMENDATIONS. LOCATE DISCHARGE AT MINIMUM OF 10'-0" FROM ANY BUILDING OPENINGS OR OUTDOOR AIR INTAKES.
- SUSPEND INLINE EXHAUST FAN FROM STRUCTURE. REFER TO MANUFACTURER'S INSTALLATION INSTRUCTIONS.
- PROVIDE CARBON MONOXIDE / NITROGEN DIOXIDE DETECTION SYSTEM, MONOXIVENT MODEL # FDS-SA-CO-NO OR EQUAL, WITH CONTROLLER AND QUANTITY OR SENSORS AS RECOMMENDED BY THE MANUFACTURER. COORDINATE POWER REQUIREMENTS WITH ELECTRICAL CONTRACTOR.
- PROVIDE 4" COMBUSTION AIR INTAKE THROUGH WALL. TERMINATE WITH KIT FURNISHED WITH TUBE HEATER. REFER TO TUBE HEATER MANUFACTURER'S INSTALLATION INSTRUCTIONS FOR INTAKE MATERIAL REQUIREMENTS.
- PROVIDE 4" COMBUSTION AIR EXHAUST THROUGH WALL. TERMINATE WITH KIT FURNISHED WITH TUBE HEATER. REFER TO TUBE HEATER MANUFACTURER'S INSTALLATION INSTRUCTIONS FOR COMBUSTION EXHAUST MATERIAL REQUIREMENTS.
- PROVIDE MOTOR OPERATED DAMPER IN LOUVER AS SHOWN. MATCH DAMPER SIZE TO LOUVER FACE DIMENSIONS. ACTUATOR TO BE 120 VOLT, SPRING CLOSED. INTERLOCK DAMPER WITH GAS DETECTION SYSTEM.
- INSTALL INDICATED EQUIPMENT AS HIGH AS POSSIBLE ON EXTERIOR WALL.
- INSTALL RADIANT TUBE HEATER WITH DEFLECTOR SHIELD DIRECTED AT 30° ANGLE TOWARDS EXTERIOR WALL.
- COORDINATE INSTALLATION OF HVLS FAN WITH OTHER TRADES. MAINTAIN OPERATIONAL AND MAINTENANCE CLEARANCES AS REQUIRED BY MANUFACTURER.
- LOCATE UNIT HEATER ON WALL WHERE SHOWN, MIN 1'-0" AFF. INSTALL PER MANUFACTURER'S REQUIREMENTS.

5BY5
ENGINEERS

1100 Main Street, 4th Floor
Kansas City, MO 64105
Kansas COA: E-2361
913-689-9449
contact@5by5eng.com
5by5eng.com



SCOTT D. GROSHANS
MO LICENSE # PE-2019012798



ARCHITECTS ■ PLANNERS

A Division of Rose Design Build

913-782-0777 FAX: 913-782-0998
P.O. BOX 100 OLATHE, KS 66051

KANSAS STATE CERTIFICATE OF AUTHORITY # A-83 www.BuildWithRose.com



PROPOSED BODY SHOP BUILDING FOR:
CRASH CHAMPIONS
451 SE OLDHAM PARKWAY
LEE'S SUMMIT, MISSOURI

NO.	DESCRIPTION	DATE
---	FOR PERMIT	06 / 14 / 2022
1	CITY COMMENTS	07 / 07 / 2022
2	CITY COMMENTS	07 / 13 / 2022
3	SHOP AC REVISION	09 / 19 / 2022
4	CITY COMMENTS	09 / 22 / 2022

PROJECT NUMBER 22009
DATE ISSUED: 06 / 14 / 2022

SHEET NUMBER

M1.0

MECHANICAL PLAN

Sep 22, 2022 -- 3:58pm -- USER: ScottGroshans
C:\Users\ScottGroshans\OneDrive\Engineers\Dropbox\5BY5 ACTIVE PROJECTS\202200038 Crash Champions Lees Summit -- Rose\Bases-CAO\202200038 ELEC.dwg
C:\Users\ScottGroshans\OneDrive\Engineers\Dropbox\5BY5 ACTIVE PROJECTS\202200038 Crash Champions Lees Summit -- Rose\Bases-CAO\202200038 ELEC.dwg
CONSTRUCTION OF THIS DRAWING IS THE PROPERTY OF ROSE DESIGN GROUP, INC. AND IS LOANED TO YOU IN CONFIDENCE. IT IS NOT TO BE COPIED OR REPRODUCED WITHOUT THE EXPRESS WRITTEN PERMISSION OF, AND THAT NEITHER THE DOCUMENT NOR THE INFORMATION CONTAINED THEREIN WILL BE USED ADVERSELY TO ROSE DESIGN GROUP, INC. ALL PATENT RIGHTS ARE RESERVED.

NEW UTILITY POLE MOUNT-
TRANSFORMERS (3) 37.5kva
ESTIMATED AVAILABLE
FCA ~ 13,139A

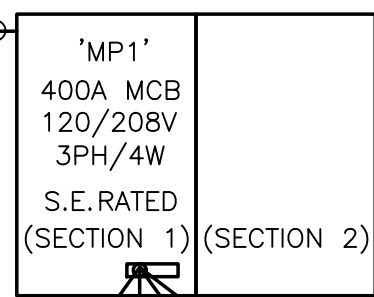
NOTE: FINAL AVAILABLE FAULT
CURRENT SHALL BE DETERMINED BY
EVERGY.

ALL SERVICE ENTRANCE AND
DISTRIBUTION EQUIPMENT SHALL BE
RATED TO ACCOMMODATE AND SAFELY
INTERRUPT AVAILABLE FAULT CURRENT.
SERIES RATED EQUIPMENT PER NEC,
UL AND MANUFACTURERS
REQUIREMENTS IS ACCEPTABLE.

ELECTRICAL CONTRACTOR SHALL
PROVIDE ENOUGH CONDUCTOR AND
PVC CONDUIT TO EXTEND UP THE
POLE. ALL WORK SHALL BE PER
EVERGY STANDARDS.

METER PER EVERGY
STANDARDS.

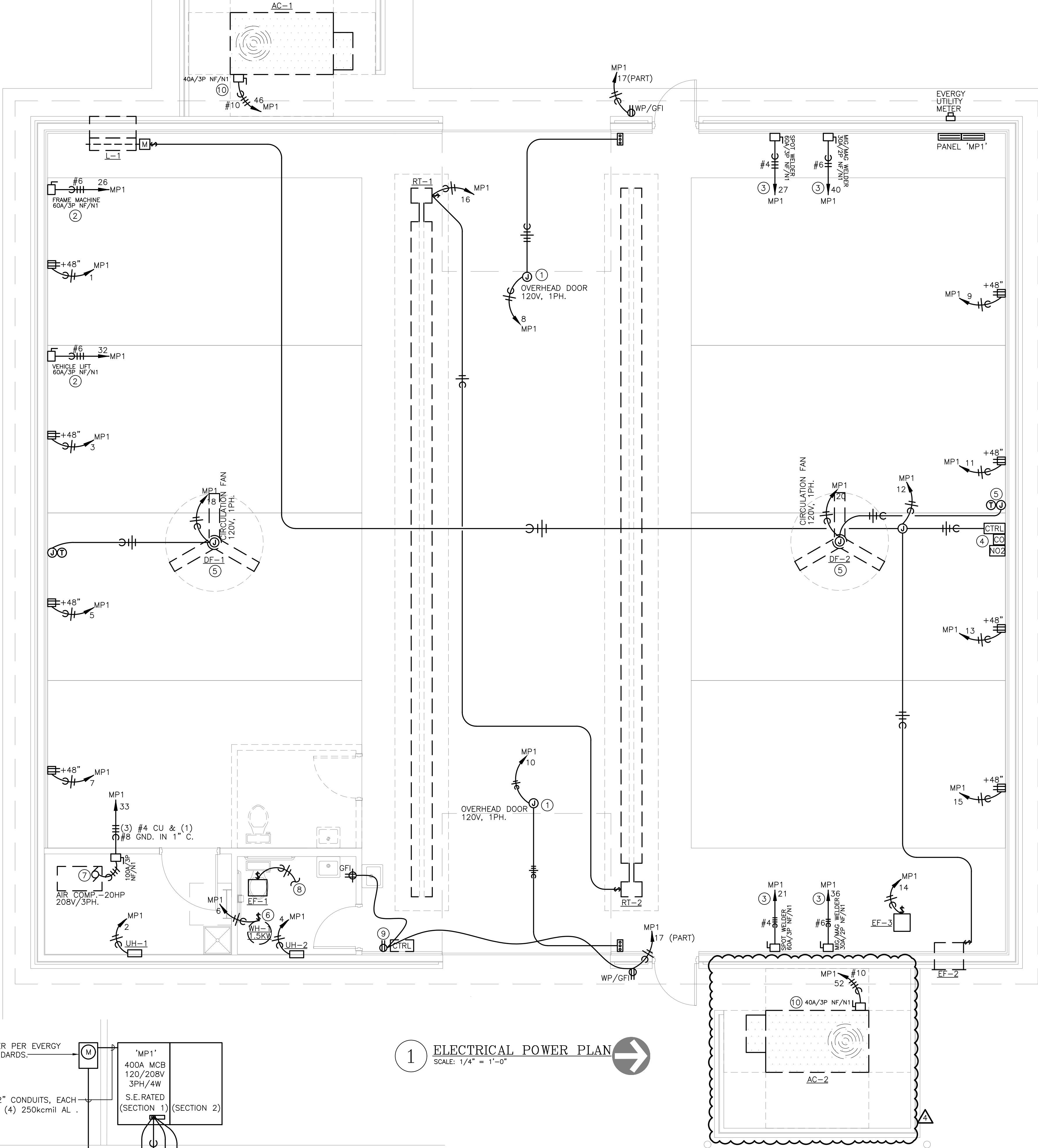
(2) 2" CONDUITS, EACH
WITH (4) 250kcmil AL.



#1/0 CU (OR #3/0 AL) GROUND IN 3/4" C. TO
BOND TO BUILDING STEEL, BUILDING WATER SERVICE, AND
CONCRETE ENCASED ELECTRODE (FOOTING REBAR). ALSO
PROVIDE (1) #6 CU CONNECTION TO DRIVEN GROUND ROD.

1 ELECTRICAL POWER PLAN

SCALE: 1/4" = 1'-0"



2 ELECTRICAL RISER PLAN

NO SCALE.

ELECTRICAL GENERAL NOTES:

- REFER TO SHEET E3.0 FOR ELECTRICAL GENERAL NOTES.

ELECTRICAL PLAN NOTES:

- PROVIDE 120V CONNECTION TO OVERHEAD DOOR OPERATOR. MOUNT CONTROL STATION PROVIDED WITH DOOR IN LOCATION APPROVED BY OWNER ADJACENT TO OVERHEAD DOOR FOR PUSH-BUTTON CONTROLS. PROVIDE CONDUIT AND WIRING BETWEEN CONTROLLER AND OPERATOR. COORDINATE WITH DOOR INSTALLER FOR SPECIFIC ELECTRICAL REQUIREMENTS.
- PROVIDE DISCONNECT AND FLEX CONNECTION TO BODY SHOP EQUIPMENT. VERIFY EXACT LOCATION AND SPECIFIC REQUIREMENTS PRIOR TO ROUGH IN. COORDINATE WITH OWNER LOCATION AND PHASING TO RELOCATE EQUIPMENT.
- PROVIDE DISCONNECT AND FLEXIBLE CONNECTION TO SHOP WELDING EQUIPMENT. CONFIRM ACTUAL REQUIREMENTS WITH SHOP OWNER PRIOR TO ROUGH-IN.
- MOUNT 'CO' CONTROL PANEL ON WALL, AND ROUTE POWER WIRING TO EXHAUST FAN 'EF-2' AND MOTORIZED LOUVER 'L-1'. COORDINATE INSTALL WITH MECHANICAL CONTRACTOR. ALL FANS, LOUVERS & CONTROL DEVICES SHALL BE FURNISHED BY MECHANICAL. MOUNTING OF CONTROL PANEL AND ALL WIRING SHALL BE BY ELECTRICAL CONTRACTOR.
- PROVIDE JUNCTION BOX FOR POWER TO CIRCULATION FAN, AND INSTALL FAN CONTROL DEVICE. COORDINATE EXACT LOCATION WITH MECHANICAL CONTRACTOR. ALL FANS & CONTROL DEVICES SHALL BE FURNISHED BY MECHANICAL. MOUNTING OF CONTROL PANEL AND ALL WIRING SHALL BE BY ELECTRICAL CONTRACTOR.
- PROVIDE CONNECTION TO 1500 WATT 120V ELECTRIC WATER HEATER MOUNTED ABOVE THE CEILING. PROVIDE TOGGLE SWITCH DISCONNECT SWITCH.
- PROVIDE DISCONNECT AND FLEXIBLE CONNECTION TO AIR COMPRESSOR. COORDINATE HOOK-UP AND EXACT REQUIREMENTS WITH OWNER.
- CONNECT BATHROOM EXHAUST FAN ON TO SWITCHED BATHROOM LIGHTS.
- DUPLEX RECEPTACLE FOR SEPTIC TANK LEVEL MONITORING PANEL. COORDINATE EXACT LOCATION WITH PLUMBING CONTRACTOR.
- PROVIDE CONNECTION AND DISCONNECT ON MECHANICAL EQUIPMENT. COORDINATE EXACT LOCATION AND REQUIREMENTS WITH MECHANICAL CONTRACTOR. REFER TO SHEET M2.0 FOR ADDITIONAL INFORMATION.

5BY5
ENGINEERS

1100 Main Street, 4th Floor
Kansas City, MO 64105
Kansas COA: E-2361
913-689-9449
contact@5by5eng.com
5by5eng.com



SCOTT D. GROSHANS
MO LICENSE # PE-2019012798

ROSE
DESIGN GROUP INC.

ARCHITECTS ■ PLANNERS

A Division of Rose Design Build

913-782-0777 FAX: 913-782-0998
P.O. BOX 100 OLATHE, KS 66051
KANSAS STATE CERTIFICATE OF AUTHORITY # A-83 www.BuildWithRose.com



PROPOSED BODY SHOP BUILDING FOR:
CRASH CHAMPIONS
451 SE OLDHAM PARKWAY
LEE'S SUMMIT, MISSOURI

NO.	DESCRIPTION	DATE
---	FOR PERMIT	06 / 14 / 2022
1	CITY COMMENTS	07 / 07 / 2022
2	CITY COMMENTS	07 / 13 / 2022
3	SHOP AC REVISION	09 / 19 / 2022
4	CITY COMMENTS	09 / 22 / 2022

PROJECT NUMBER 22009

DATE ISSUED: 06 / 14 / 2022

SHEET NUMBER

E1.0

ELECTRICAL POWER PLAN