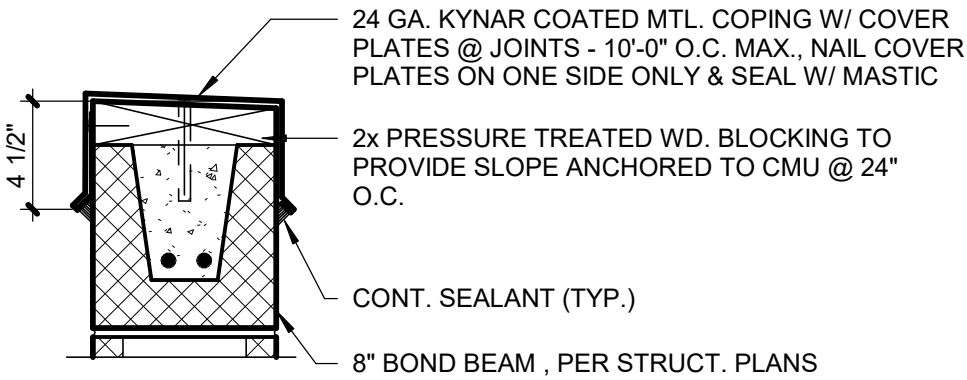


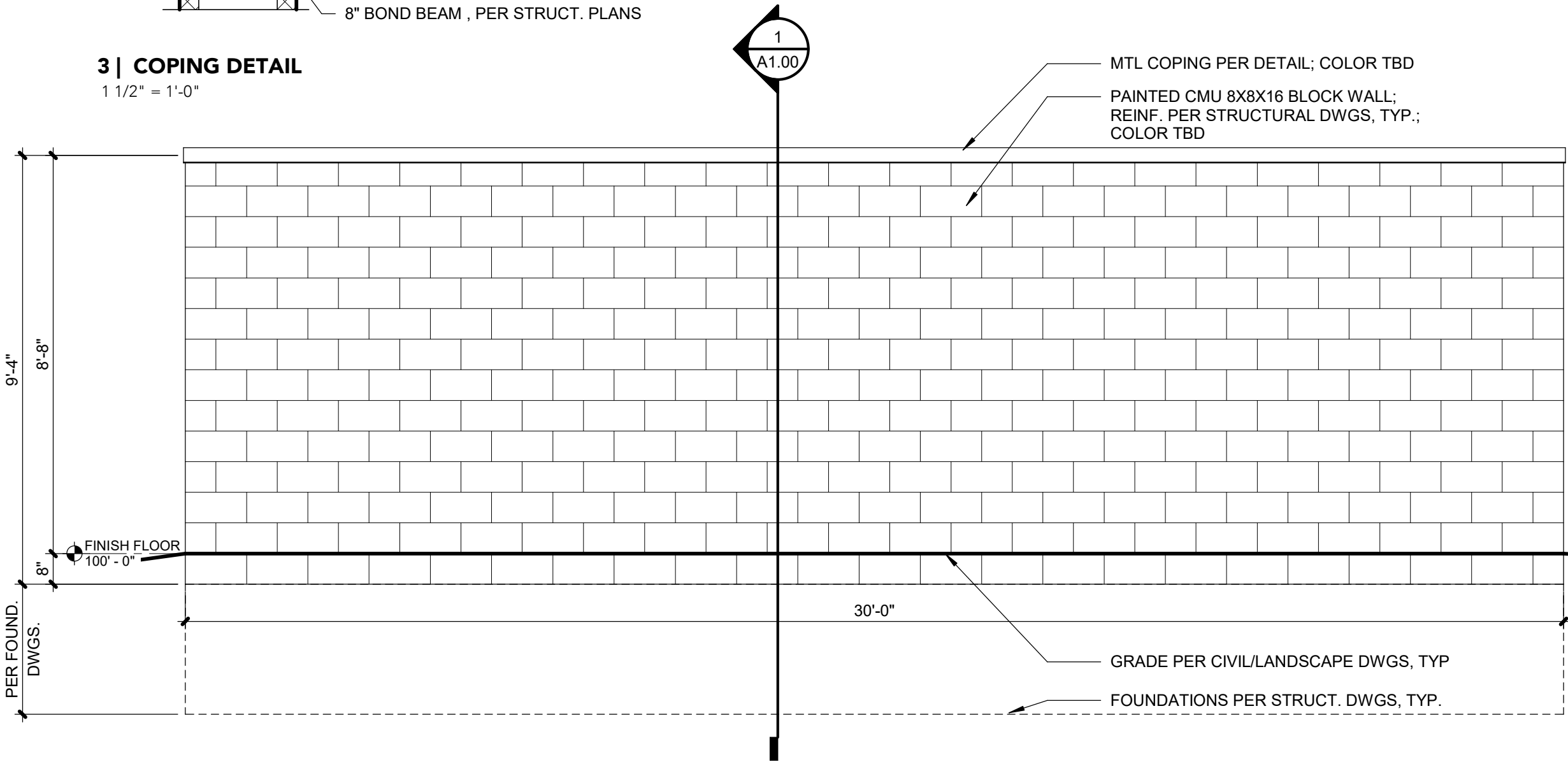
RELEASED FOR
CONSTRUCTION
As Noted on Plans Review
Development Services Department
Lee's Summit, Missouri
09/22/2022



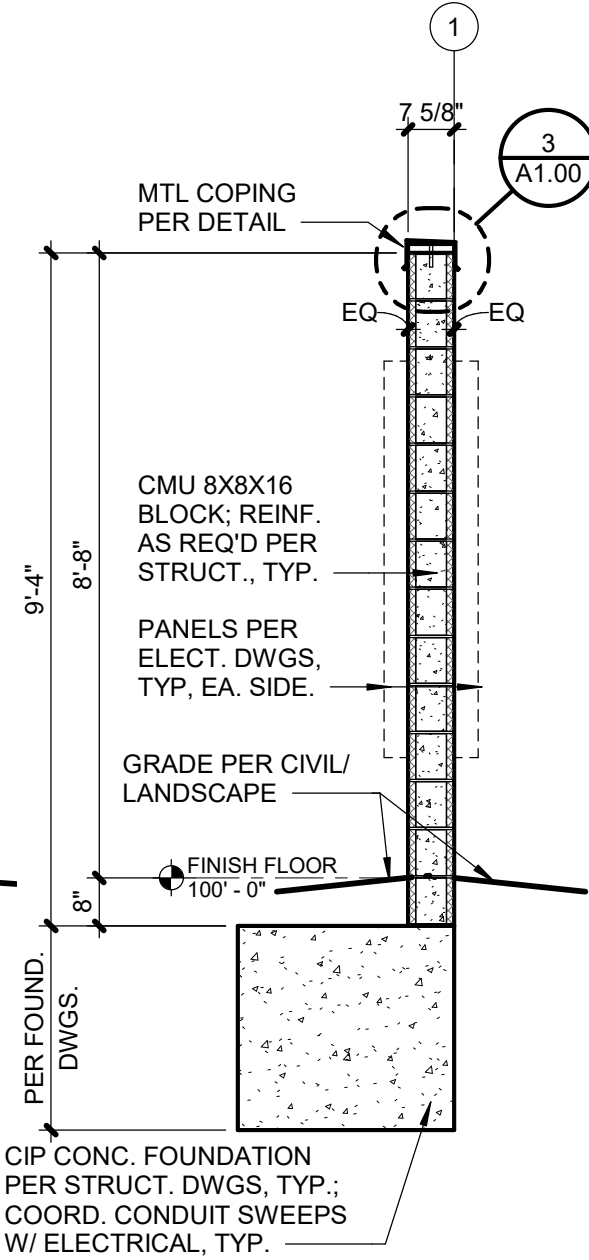
9.20.22



3 | COPING DETAIL
1 1/2" = 1'-0"



2 | WEST ELEVATION
3/8" = 1'-0"



1 | WALL SECTION
3/8" = 1'-0"



FINKLE + WILLIAMS
ARCHITECTURE



PARAGON SOCCER - WEST WALL

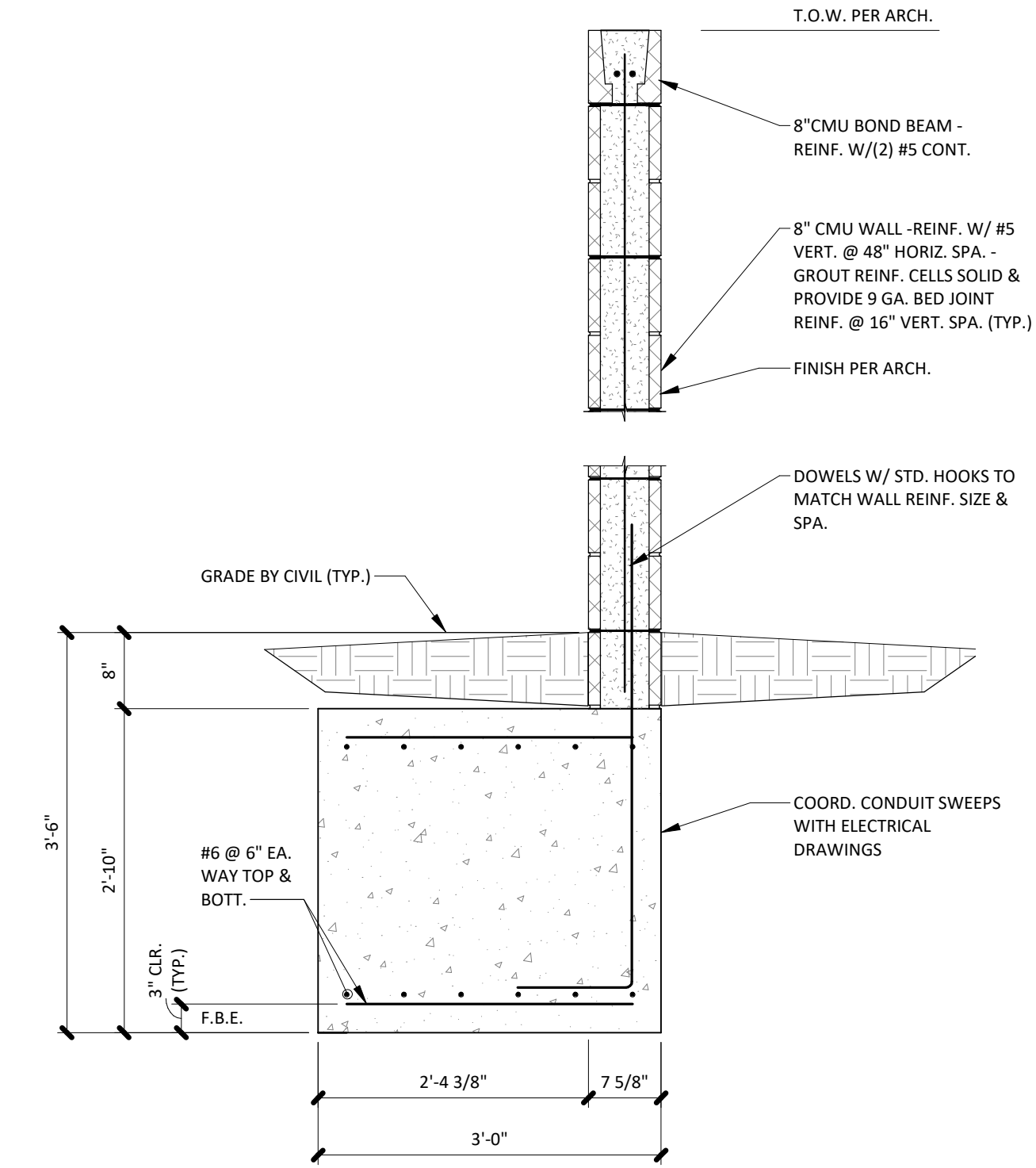
WEST ENTRY - PER CIVIL/LANDSCAPE DWGS.
LEE'S SUMMIT, MO

Project #	19050.06	Date:	09/12/22
Revision:			
Sheet No:	A1.00		



**RELEASED FOR
CONSTRUCTION**
As Noted on Plans Review

Development Services Department
Lee's Summit, Missouri
09/22/2022



SECTION | 01

3/4" = 1'-0" | S1.0