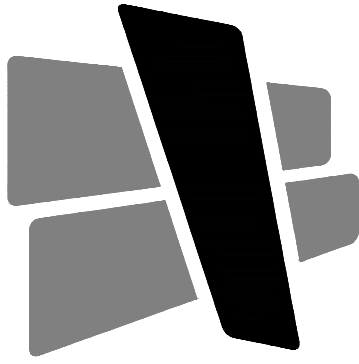


GENERAL NOTES

- A. CONTRACTOR SHALL BE RESPONSIBLE FOR VERIFICATION OF ALL DIMENSIONS AND JOB CONDITIONS. ANY DEVIATION FROM WHAT IS NOTED IN DRAWINGS SHALL BE BROUGHT TO THE ATTENTION OF THE ARCHITECT IMMEDIATELY.
- B. ALL DIMENSIONS SHOWN ARE FACE OF BRICK, MASONRY OR METAL STUD FRAMING, UNLESS OTHERWISE NOTED.
- C. PROVIDE APPROVED FIRE RATED STOPPING MATERIALS IN ANY OPENINGS IN FIRE RATED ASSEMBLIES.
- D. REFER TO DOOR AND WINDOW SCHEDULES FOR ALL MATERIALS, FINISHES, AND HARDWARE INFORMATION.
- E. REFER TO EXTERIOR ELEVATIONS FOR ALL BRICK, MASONRY, AND OTHER EXPANSION JOINT LOCATIONS.
- F. PRIOR TO ORDERING ANY PRODUCTS, CONTRACTOR SHALL SUBMIT SAMPLES TO THE ARCHITECT OF ALL FINISH MATERIALS TO BE USED ON THE PROJECT. THE CONTRACTOR SHALL BEAR SOLE RESPONSIBILITY FOR ANY MATERIALS ORDERED INCORRECTLY WHEN THAT MATERIAL WAS NOT REVIEWED BY THE ARCHITECT.
- G. PROVIDE CONCRETE FILLED STEEL PIPE BOLLARDS AT ALL REQUIRED UTILITY EQUIPMENT LOCATIONS SUCH AS GAS METERS, ELECTRICAL TRANSFORMER PANELS, ETC., COORDINATE WITH UTILITY COMPANY AND CONTRACTORS, WHEN APPLICABLE, FOR NECESSARY LOCATIONS. REFER TO CIVIL DRAWINGS FOR BOLLARD SPECIFICATIONS AND ADDITIONAL INFORMATION.
- H. ALL DOORS, UNLESS OTHERWISE NOTED, TO HAVE HINGE SIDE SET 4" FROM CORNER SHOWN TO OUTSIDE OF FRAME.
- I. UNLESS SPECIFIED ELSEWHERE, ALL INTERIOR SLABS AND SLAB INFILLS TO BE FF-50/FL-35 OVERALL AND FF-35/FL-25 LOCAL.
- J. ALL EXIT DOORS TO HAVE TACTILE EXIT SIGNAGE PER 703.4 OF THE ANSI 117.1 2009

KEYED NOTES

1. STEEL COLUMN WITH PAINTED FINISH. REFER TO STRUCTURAL. PAINT SAFETY YELLOW TO 12'-0" AND WHITE TO DECK. PAINT COLUMNS W/ FIRE EXTINGUISHERS RED FULL HEIGHT.
2. OVERHEAD DRIVE-IN DOOR. REFER TO ELEVATIONS AND DOOR SCHEDULE.
3. RECESSED DOCK LEVELER WITH DOCK SEALS AND OVERHEAD DOCK DOOR. REFER TO ELEVATIONS, WALL SECTIONS, AND DOOR SCHEDULE.
4. LOCATION OF FUTURE DOCK LEVELER AND OVERHEAD DOCK DOOR. PRECAST PANELS TO BE FABRICATED TO ALLOW FOR FUTURE REMOVAL OF CONCRETE IN THESE LOCATIONS. REFER TO ELEVATIONS FOR ADDITIONAL INFORMATION.
5. STEEL DOCK STAIRS. REFER TO WALL SECTIONS AND DETAILS.
6. INSULATED STEEL DOOR AND HOLLOW METAL FRAME. SEE ELEVATIONS AND DOOR SCHEDULE.
7. THERMALLY BROKEN ANODIZED ALUMINUM AND INSULATED GLASS STOREFRONT SYSTEM.
8. CONCRETE SLAB ON GRADE. SEE STRUCTURAL.
9. CONCRETE FILLED STEEL BOLLARD - PAINTED. SEE DETAILS ON A502.
10. 18" WIDE ROOF ACCESS LADDER WITH 1 INCH DIAMETER STEEL RUNGS AT 12" O.C. SECURE STRINGERS TO FLOOR TYPICAL BOTH SIDES PER LADDER SUPPLIER REQUIREMENTS. SEE STRUCTURAL DETAILS.
11. PROVIDE KNOX BOX ON BUILDING. COORDINATE FINAL LOCATION WITH FIRE DEPARTMENT.
12. NOT USED.
13. CMU WALL TO 12'-0" AFF WITH STUD AND DRYWALL TO DECK. REFER TO DETAIL 11A304.
14. TYPICAL TILT WALL CONCRETE PANELS WITH INTERIOR INSULATION.
15. SF3 WINDOW TO BE CENTERED BETWEEN PANEL JOINT/REVEAL. SEE WINDOW DETAILS FOR SIZE.
16. CANOPY ABOVE. SEE ELEVATIONS AND WALL SECTIONS.
17. ROOF DRAIN LEADERS. SIZE BY PLUMBING ENGINEER. COORDINATE PLACEMENT TO BE CENTERED ON PANEL JOINTS.
18. INTERIOR OF TILT-UP WALL PANELS TO BE PAINTED SEMI GLOSS WHITE FULL HEIGHT.



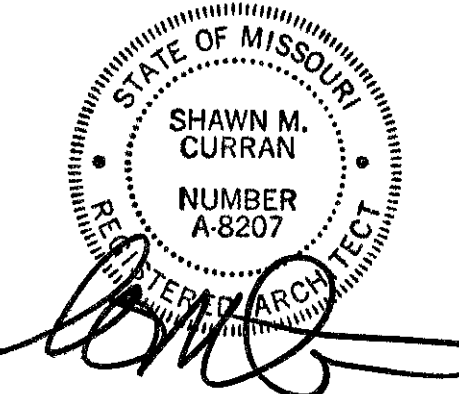
CURRAN
ARCHITECTURE

5719 LAWTON LOOP E. DR. #212
INDIANAPOLIS, IN 46216
O :: 317 . 288 . 0681
F :: 317 . 288 . 0753



SCANNELL
PROPERTIES

CERTIFICATION



THIS DRAWING AND THE IDEAS, DESIGNS AND CONCEPTS CONTAINED HEREIN ARE THE EXCLUSIVE INTELLECTUAL PROPERTY OF CURRAN ARCHITECTURE, AND ARE NOT TO BE USED OR REPRODUCED, WHOLE OR IN PART, WITHOUT THE WRITTEN CONSENT OF CURRAN ARCHITECTURE.
© COPYRIGHT 2021, CURRAN ARCHITECTURE

PROJECT INFORMATION

LEE'S SUMMIT LOGISTICS
BUILDING B LOT 2

X CORNER OF
NE TUDOR RD & MAIN ST
LEE'S SUMMIT, MO 64086

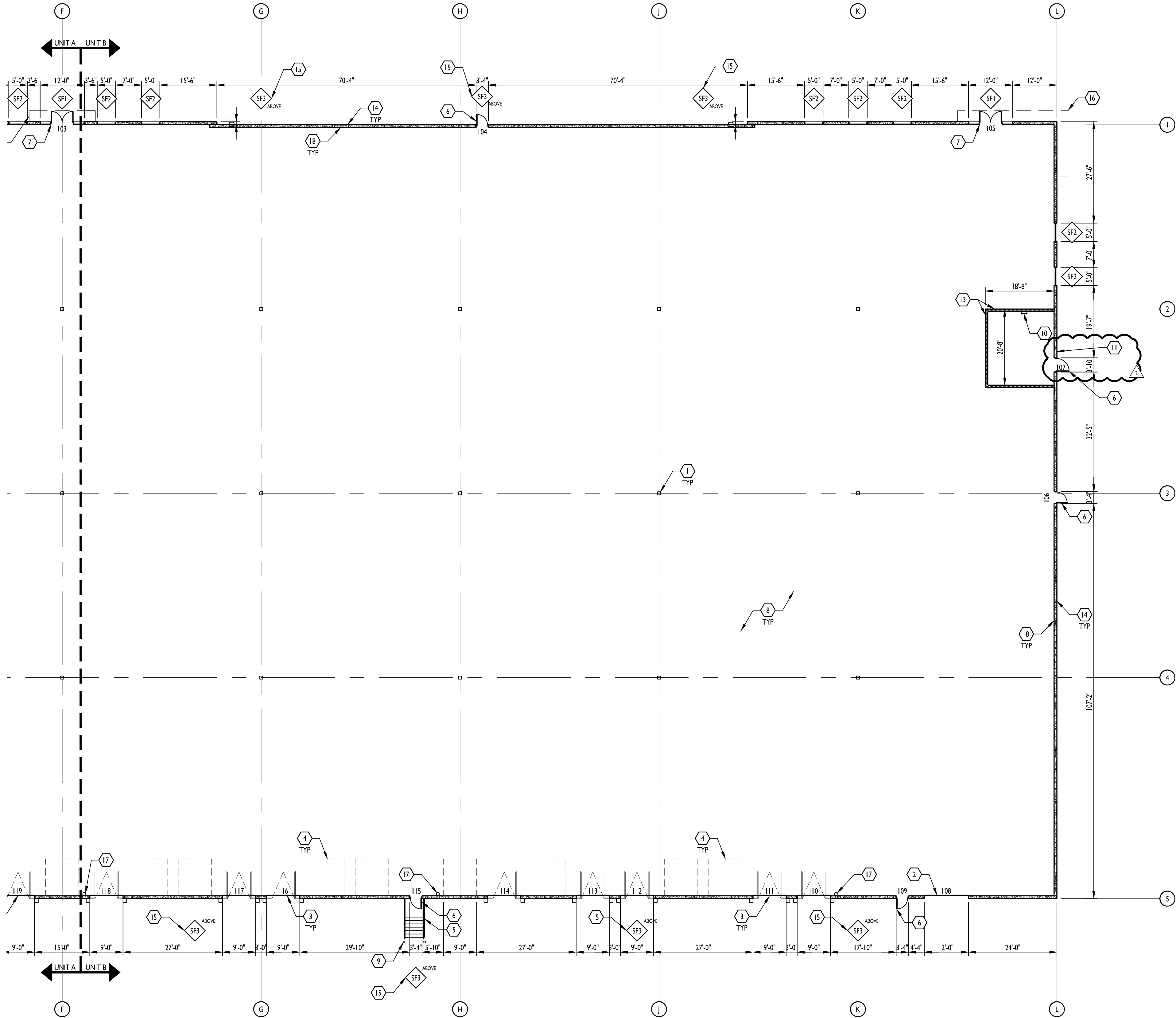
ISSUE DATES

PERMIT SET	04.26.22
PUMP ROOM REVISION	07.25.22
PERMIT COMMENTS	09.19.22

220018

FLOOR PLAN - AREA B

A103



FLOOR PLAN

1/16" = 1'-0"



KEY PLAN

