

C:\Backup\Revit\PT20M - Lees Summit (Market S) MO_V20_ARCH_indultigianoG6WTU.rvt 9/15/2022 1:56:17 PM

CODE ANALYSIS

APPLICABLE CODES				
JURISDICTION	CITY	COUNTY	STATE	
CODE ENFORCEMENT	CITY OF LEE'S SUMMIT	JACKSON	MISSOURI	
ZONING	PI- PLANNED INDUSTRIAL		USA	
CODE	TITLE	EDITION	AMENDMENTS	REMARKS
BUILDING	INTERNATIONAL BUILDING CODE	2018	-	
FIRE	INTERNATIONAL FIRE CODE	2018	-	
MECHANICAL	INTERNATIONAL MECHANICAL CODE	2018	-	
ELECTRICAL	NATIONAL ELECTRICAL CODE	2017	-	
PLUMBING	INTERNATIONAL PLUMBING CODE	2018	-	
LANDSCAPE	LOCAL LANDSCAPE ORDINANCE	YES	-	
ENERGY	NONE		-	
SIGNAGE	LOCAL SIGNAGE ORDINANCE	YES	-	
ADA	ICC/ANSI A117.1	2009	-	
HEALTH	LOCAL HEALTH REQUIREMENTS	YES	-	

USE AND OCCUPANCY CLASSIFICATION				
	USE GROUP	CONSTRUCTION TYPE	FIRE PROTECTION	MIXED USE
	303.3	TABLE 601	903.2.1.2	SECTION 508.3
CLASSIFICATION	ASSEMBLY GROUP A-2	VB	SPRINKLERED	MAJOR OCCUPANCY A-2 NON SEPARATED OCC.
ACTUAL BUILDING AREA				3,746
MIXED USE	ASSEMBLY, STORAGE, BUSINESS			

GENERAL BUILDING SUMMARY			
BUILDING HEIGHT LIMITATIONS	STORIES	BUILDING AREA LIMITATIONS (PER FLOOR)	AREA (SF)
ALLOWABLE HEIGHT LIMITATION	1 STORY, 40'	ALLOWABLE AREA LIMITATION	6,000
ALLOWABLE HEIGHT INCREASE (SPRINKLER SYS.)	1 STORY, 20'	ALLOWABLE AREA	300%
OTHER	N/A	ALLOWABLE AREA INCREASE (SEPARATION)	N/A
TOTAL ALLOWABLE HEIGHT	60'	TOTAL ALLOWABLE AREA	24,000
ACTUAL HEIGHT (IN STORIES)	1 STORY, 21'-0"	ACTUAL BUILDING AREA	3,746

FIRE RESISTANCE RATINGS			
AUTOMATIC SPRINKLER SYSTEM			
BUILDING ELEMENT	RATING (HOURS)	DESIGN NO.	REMARKS
STRUCTURAL FRAME	0		TABLE 601
BEARING WALLS: EXTERIOR	0		TABLE 601
BEARING WALLS: INTERIOR	0		TABLE 601
NONBEARING WALLS: EXTERIOR	0		TABLE 602
NONBEARING WALLS: INTERIOR	0		TABLE 601
FLOOR CONSTRUCTION	0		-
ROOF CONSTRUCTION	0		-
CORRIDORS	0		TABLE 1018.1
OPEN EGRESS STAIRS	N/A		

FIRE RESISTANCE RAITINGS FOR EXTERIOR WALLS BASED ON SEPARATION DISTANCE		
MINIMUM FIRE RESISTANCE RATING	MINIMUM FIRE SEPARATION	ACTUAL FIRE SEPARATION
0	X≥30	X≥30

OCCUPANT LOAD				
OCCUPANCY	AREA (SF)	FACTOR	LOAD (OCCUPANTS)	REMARKS
STORAGE	708	300 SF	3	
BUSINESS	59	100 SF	1	
COMMERCIAL KITCHEN	886	200 SF	5	
FLEX SEATING	-	ACTUAL	35	
FIXED SEATING	-	24" PER PERSON	41	984 LINEAR INCHES OF SEATING
WAITING	224	15 SF	15	224 SF
RESTROOMS	202	0 NET		
TOTAL	2140		100	

MEANS OF EGRESS				
EGRESS WIDTH	FACTOR (INCHES PER OCCUPANT)	REQUIRED (INCHES)	PROVIDED (INCHES)	REMARKS
DOORS, RAMPS, COORIDORS	0.2	20	150	1005.3.2
EXIT ACCESS REQUIREMENTS		MINIMUM UNITS	PROVIDED UNITS	REMARKS
MINIMUM NUMBER OF EXITS		2	3	1006.3.1
MINIMUM CORRIDOR WIDTH (INCHES)		44	44	1020.2
STORE MINIMUM EXIT SEPARATION (FEET)		32	41	1007.1.1
MAXIMUM LENGTH OF EXIT ACCESS TRAVEL (FEET)		250	<250	1017.2
MAXIMUM DEAD ENDS: (FEET)		20	<20	1029.9.5
MAXIMUM COMMON PATH OF EGRESS TRAVEL (FEET) IN B OCCUPANCY		100	<75	1006.2.1
MAXIMUM COMMON PATH OF EGRESS TRAVEL (FEET) IN A OCCUPANCY		30	<30	1029.8

INTERIOR FINISHES		
MAXIMUM FLAME SPREAD CLASS	WALLS/CEILINGS	REMARKS
EXIT PASSAGEWAYS	B	TABLE 803.11
COORIDORS	B	TABLE 803.11
ROOMS AND ENCLOSED SPACES	C	TABLE 803.11

PLUMBING FIXTURE COUNT					
TOTAL STORE OCCUPANT LOAD	100	MEN	50	WOMEN	50
FIXTURE TYPE	FACTOR PER OCCUPANT	REQUIRED	PROVIDED	REQUIRED	PROVIDED
WATER CLOSET	75	1	1	1	2
URINALS	50% MAY BE URINAL	N/A	N/A	N/A	N/A
LAVATORIES	200	1	1	1	1
UNISEX TOILET (REQUIRED IF 6 OR MORE WC ARE REQUIRED)	N/A	0		0	
SERVICE SINKS	1 REQUIRED		1		
DRINKING FOUNTAINS	EXEMPT				

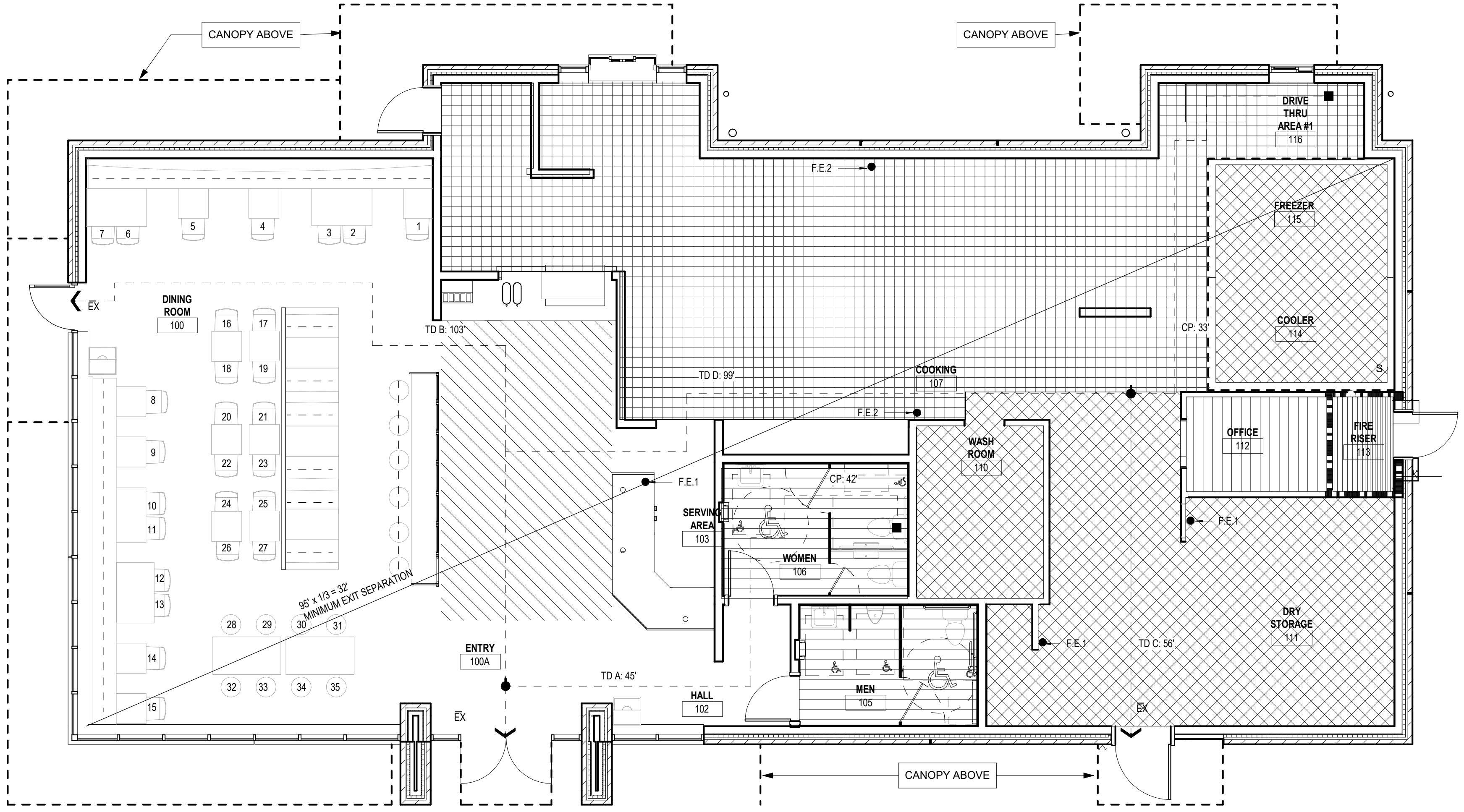
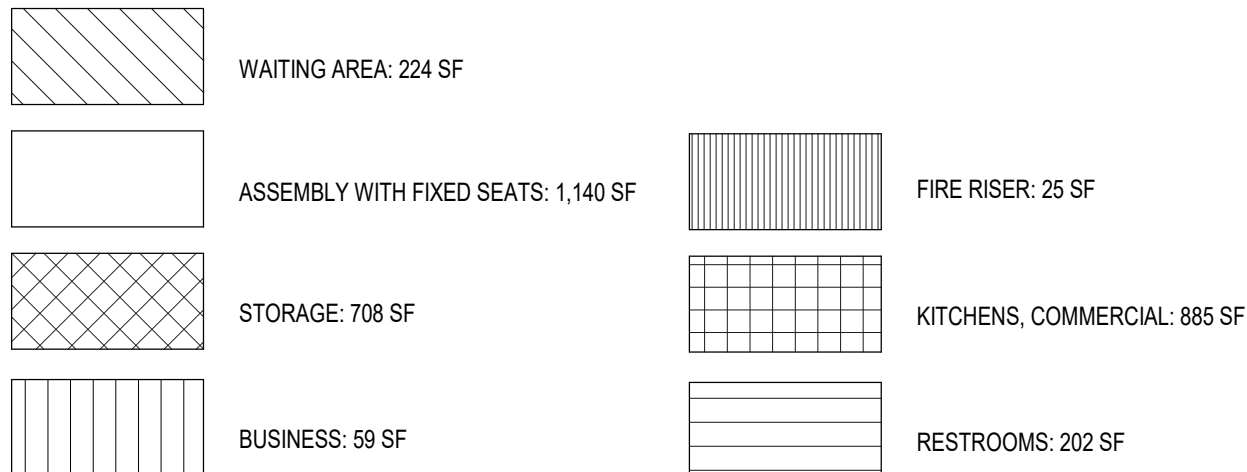
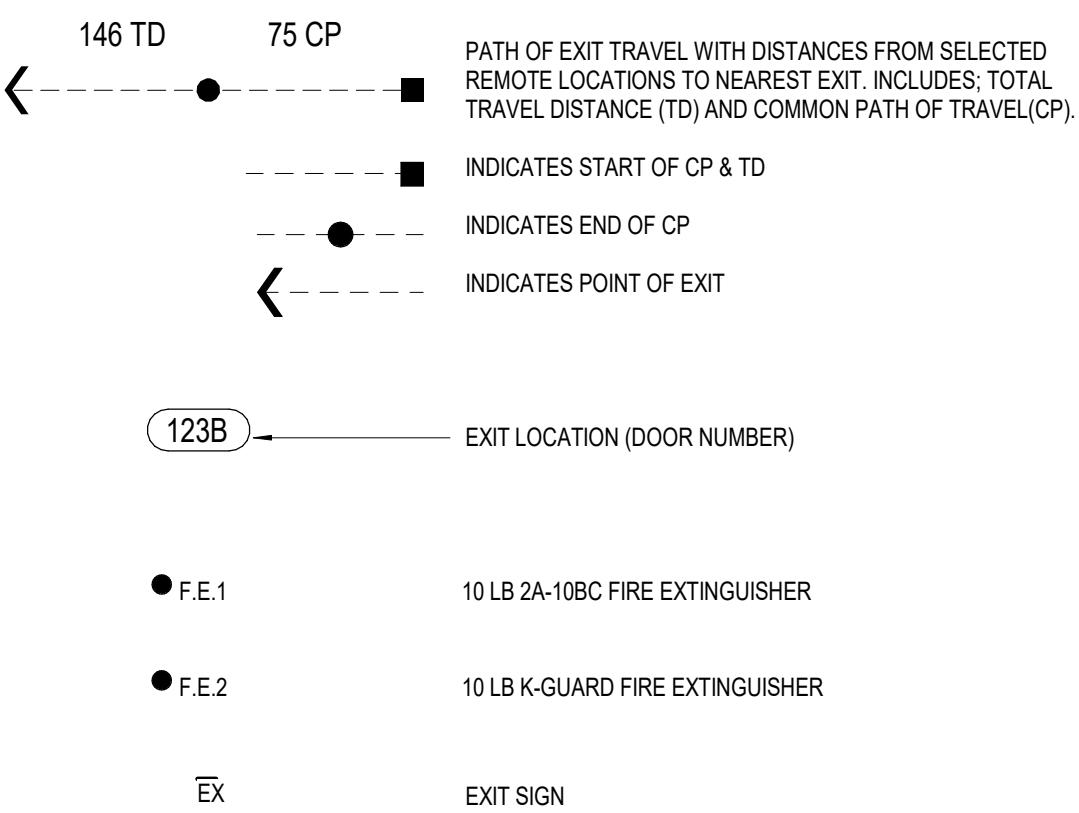
- PERFORM WORK IN COMPLIANCE WITH ALL APPLICABLE ACCESSIBILITY, FEDERAL, STATE AND LOCAL CODES AND ORDINANCES. NOTIFY ARCHITECT OF ANY DISCREPANCIES FOR CLARIFICATION.
- NOT USED
- COORDINATE ALL TRADES PRIOR TO CONSTRUCTION TO ENSURE PROPER SEQUENCING OF THE WORK.
- VERIFY ALL EXISTING CONDITIONS PRIOR TO BIDDING, FABRICATION AND CONSTRUCTION. NOTIFY ARCHITECT OF ANY DISCREPANCIES FOR CLARIFICATION.
- DO NOT SCALE DRAWINGS. NOTIFY ARCHITECT OF ANY DIMENSIONAL DISCREPANCIES FOR CLARIFICATION.
- DIMENSIONS UNLESS NOTED OTHERWISE.
- TO FACE OF WOOD STUD, CONCRETE OR MASONRY WORK; TO CENTERLINE OF COLUMNS OR OTHER GRID POINTS TO CENTERLINE FRAMES WINDOW AND DOOR OPENINGS; TO FINISH FACES OF CLEAR WIDTHS.
- VERIFY SIZE, CHARACTERISTICS, AND REQUIRED CLEARANCES OF ALL EQUIPMENT TO BE FURNISHED WITH MANUFACTURERS OR SUPPLIERS PRIOR TO CONSTRUCTION. NOTIFY ARCHITECT OF ANY DISCREPANCIES FOR CLARIFICATION.
- PROVIDE BLOCKING AND GROUNDS AS SPECIFIED FOR BUILT-IN AND SURFACE MOUNTED ITEMS PRIOR TO APPLYING WALL-SURFACING MATERIALS. LOCATIONS SHALL BE COORDINATED WITH THE WORK OF OTHER TRADES.
- CONCEAL ALL PLUMBING, DUCTWORK, CONDUIT, WIRE, AND SIMILAR ITEMS UNLESS NOTED OTHERWISE.

DEFERRED SUBMITTALS

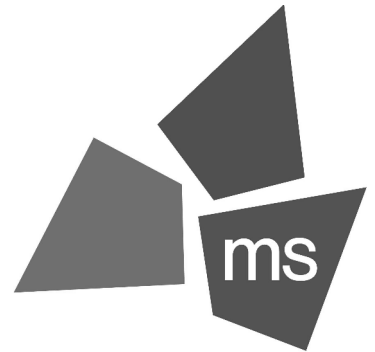
PLANS AND SPECIFICATIONS FOR DEFERRED SUBMITTAL ITEMS SHALL BE SUBMITTED TO THE PLANNING & DEVELOPMENT DEPARTMENT AFTER BEING REVIEWED FOR CONFORMANCE WITH THE BUILDING OR STRUCTURE DESIGN BY THE REGISTERED DESIGN PROFESSIONAL IN RESPONSIBLE CHARGE AND SHALL HAVE PDD APPROVAL PRIOR TO ERECTION, CONSTRUCTION OR INSTALLATION IN THE FIELD. THE REGISTERED DESIGN PROFESSIONAL IN RESPONSIBLE CHARGE SHALL PROVIDE A NOTATION ON ALL DEFERRED DOCUMENTS THAT ACKNOWLEDGES REVIEW OF SUCH DOCUMENTS. A SEPARATE PERMIT FOR THE INSTALLATION OF A DEFERRED ITEM SHALL NOT BE REQUIRED UNLESS SPECIFIED IN THIS CODE.

- KITCHEN HOOD FIRE SUPPRESSION
- SIGNAGE
- WET SPRINKLER SYSTEM
- FIRE ALARM SYSTEM
- PRE - ENGINEERED WOOD TRUSS

LIFE SAFETY PLAN LEGEND



A1 LIFE SAFETY PLAN
SCALE 3/16" = 1'-0"



ms consultants, inc.
engineers, architects, planners
2221 Schrock Road
Columbus, Ohio 43229
p 614.898.7100
f 614.898.7570
www.msconsultants.com

PROTOTYPE: PT20M
**NEQ HW 150 AND
HOLLYWOOD ST**
LEES SUMMIT, MO



NOTICE: THIS ARCHITECTURAL AND ENGINEERING DRAWING IS GIVEN IN CONFIDENCE AND SHALL BE USED ONLY PURSUANT TO THE AGREEMENT WITH THE ARCHITECT. NO OTHER USE, DISSEMINATION, OR DUPLICATION MAY BE MADE WITHOUT PRIOR WRITTEN CONSENT OF THE ARCHITECT. ALL COMMON LAW RIGHTS OF COPYRIGHT AND OTHERWISE ARE HEREBY SPECIFICALLY RESERVED.



ARCHITECT OF RECORD:
CHARLES M. BUSCH No. A-2019022528
EXP. DATE 12/31/2023

REV	DESCRIPTION	DATE
2	BUILDING PERMIT RESUBMITTAL	9/15/22

Project No.: 40497-21

Client Project No.:

Drawing Title:

**CODE ANALYSIS AND LIFE
SAFETY PLANS**

Date: 06.29.22 Phase: PERMIT SET
Designed: WJB
Drawn: BKN
Checked: AMF

Drawing No.:

G1.0