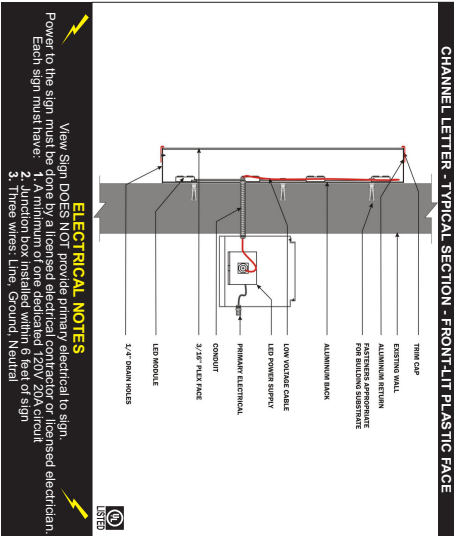
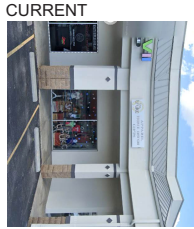
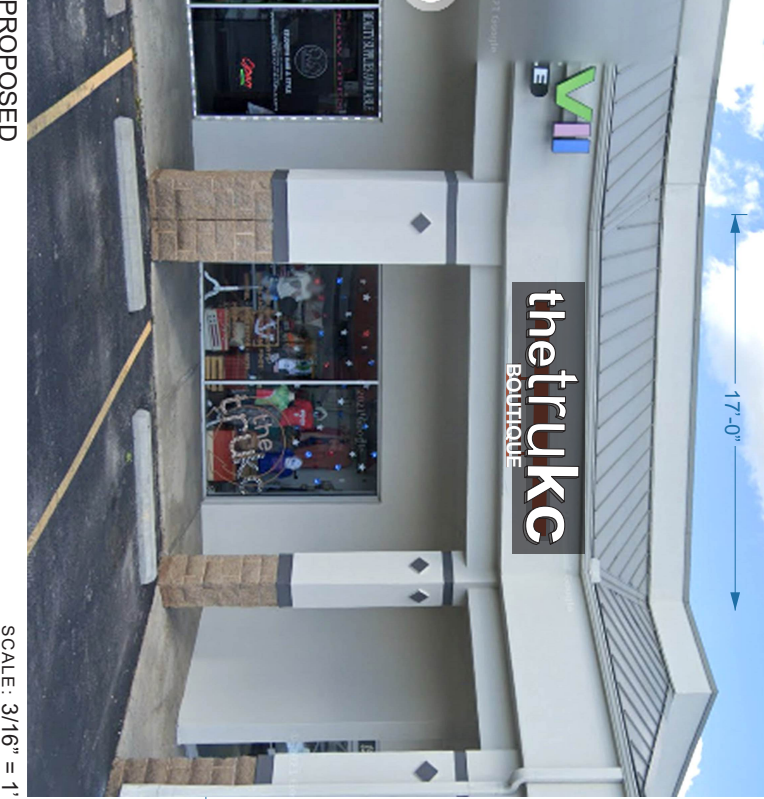


Building Frontage: 362.67 sq ft
Overall Sign Height: 2'-6"
Overall Sign Width: 9'-0"
Total Sq. Ft.: 22.5 (6.2%)
(10% allowed = 36.27 sq ft)





- CHANNEL LETTERS**
- 4" Deep Aluminum Channel letter construction.
 - .060 Backs and .050 returns.
 - Returns - black
 - Acrylic face - white
 - 1" trim cap - black
 - Internally illuminate with white LED modules
 - All electrical and installation details to meet local codes and site requirements
 - BOUTIQUE - 1/4" Flat cutout white acrylic letters mounted to aluminum support structure and mounted to bottom of sign
 - NOTE: primary electrical to sign area provided by others.
 - Low Voltage Electronic Transformer Mounted in A7 1/4" x 7 1/4" Extruded Aluminum Raceway Support/Wiring Box - Painted to match bldg (color TBD)
 - Visible Cut-Off Switch
 - 1/4" Weep Holes (2) Two Per Letter
 - Grounded Wall Pass-Thru Seals Water Tight



PROPOSED

SCALE: 3/16" = 1'

 <p>View Sign & Light 10935 Kaw Drive Edwardsville, KS 66111 913 / 529.2010</p>	<p>Client:</p>  <p>856 SW Blue Pkwy Lee's Summit MO 64063</p>	<p>7/15/2022 Last Revision: 8/20/2022 Drawing #: the truKC 0722</p>	<p>• See Be Client Approval • Tullaton Landlord Approval</p>	<p>Sales Rep: DV Designer: MAP</p> <p>MEMBER INTERNATIONAL SIGN ASSOCIATION LISTED</p>
--	--	---	--	--