

BIM 360/IMO\_02859\_Summit Fair FSU\_2022.5\_TRO02859\_Summit Fair FSU\_Remodel\_PLB.rvt  
9/2/2022 1:45:11 PM  
40-02859-P-101-PLUMBING FLOOR PLANS

## GENERAL NOTES

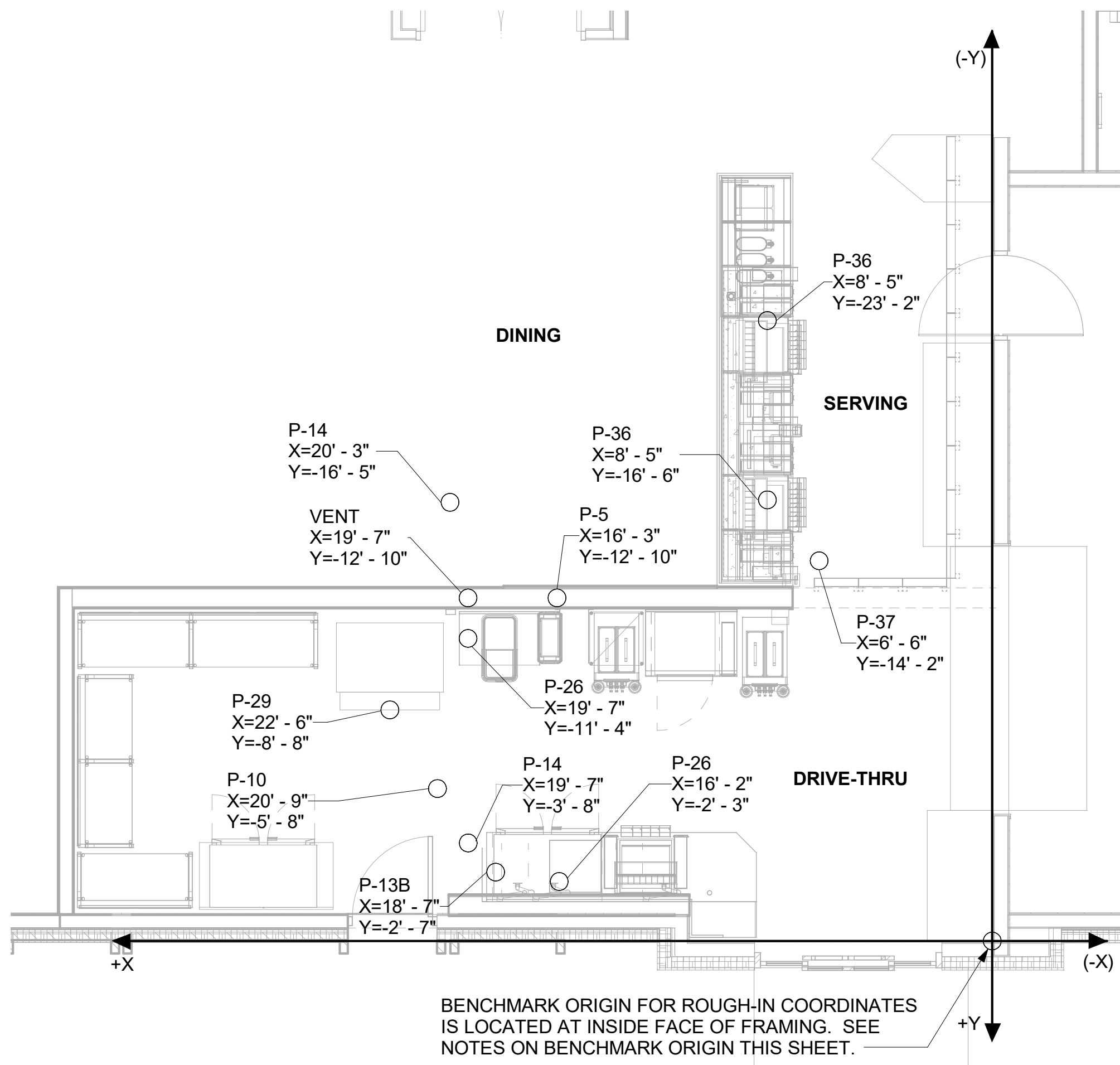
- COORDINATE ABOVE CEILING PIPING LOCATIONS AND ROUTING WITH OTHER TRADES PRIOR TO INSTALLATION. ALL MAIN DUCT TRUNK LOCATIONS SHALL TAKE PRIORITY.
- INSTALL ALL PIPING TIGHT TO STRUCTURE.
- SEE K-SHEET ELEVATIONS FOR KITCHEN EQUIPMENT WATER PIPING ROUGH-IN LOCATIONS.
- AT 4" CONDUIT DROPS IN DRIVE-THRU, PROVIDE 1/8TH BEND FITTING WITH SHORT PIPE STUB AT BASE OF DROP. CUT STUB AND FITTING FLUSH WITH FINISHED WALL.
- CONTRACTOR TO FIELD VERIFY ALL EXISTING CONDITIONS, INCLUDING LOCATION, FALL, DIRECTION OF FLOW AND CONNECTING INVERTS, PRIOR TO COMMENCING WORK. NOTIFY CHICK-FIL-A CONSTRUCTION REPRESENTATIVE IF EXISTING MAJOR DISCREPANCIES IN ROUTING OF SERVICE LINES ARE DISCOVERED IN FIELD.
- IT IS THE RESPONSIBILITY OF THE CONTRACTOR TO VISIT THE SITE DURING BID PHASE, WITH EXISTING DRAWINGS PROVIDED BY THE OWNER IN ORDER TO DETERMINE THE TRUE AS-BUILT CONDITIONS OF THE POTABLE WATER, SANITARY, WASTE, VENT, AND OTHER PIPING SYSTEMS.
- GENERAL CONTRACTOR SHALL BE RESPONSIBLE FOR REMOVING, STORING, AND RELOCATING EXISTING PLUMBING EQUIPMENT. PLUMBING CONTRACTOR TO COORDINATE DISCONNECTING OF EXISTING EQUIPMENT WITH GENERAL CONTRACTOR PRIOR TO COMMENCING WORK.
- CONTRACTOR IS RESPONSIBLE FOR REPAIRING AND LEVELING OF FLOOR DEPRESSIONS IN AREAS WHERE EXISTING FLOOR DRAINS, CLEANOUTS, AND/OR OTHER FLOOR ITEMS ARE BEING DEMOLISHED, ABANDONED, OR RELOCATED.

## KEY NOTES

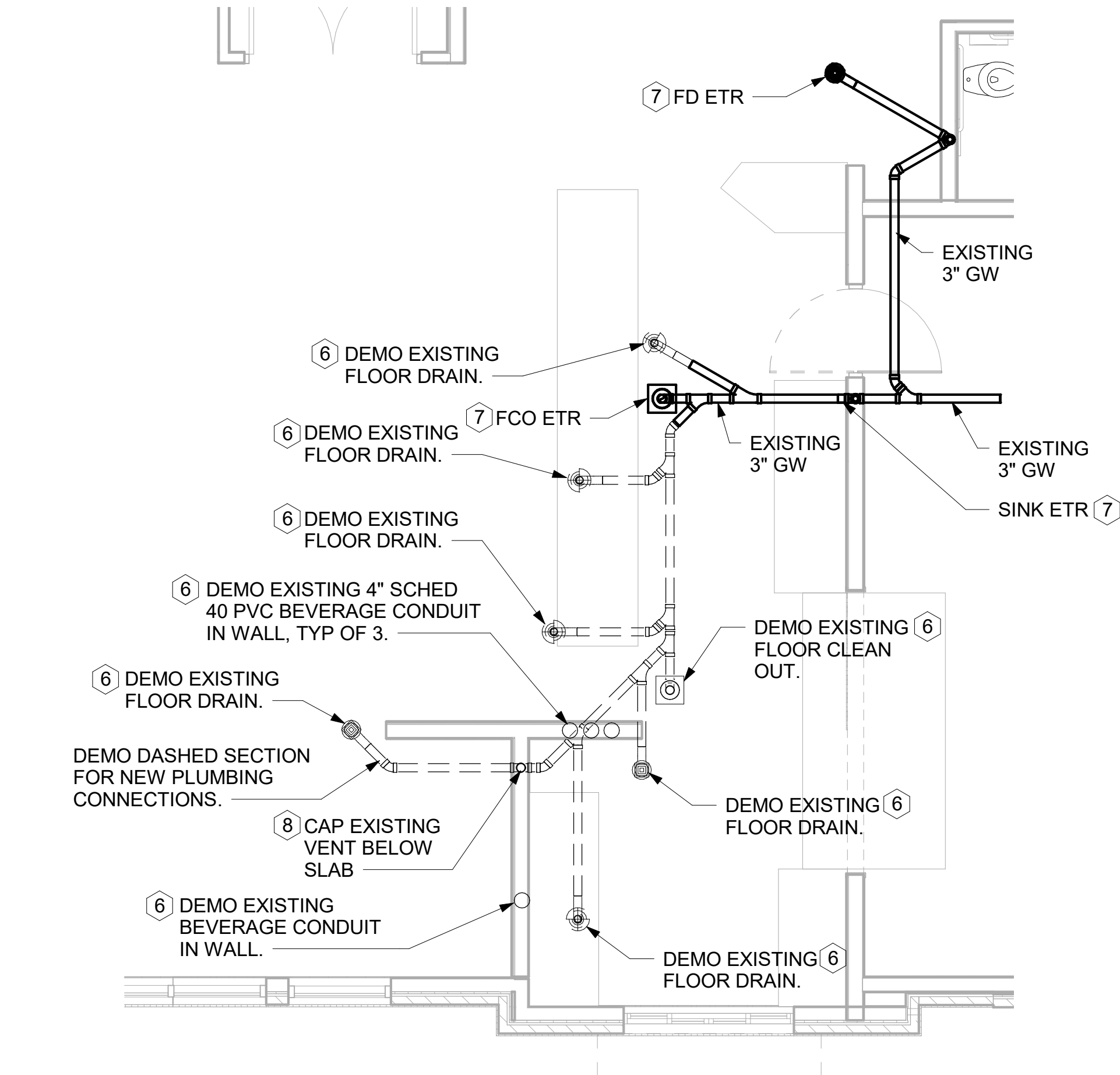
- PROVIDE TRAP SEAL PROTECTOR P-26A.
- CONNECT TO EXISTING.
- 1/2" FW TO P-24 & P-34 AT TWO TEA BREWERS AND TWO COFFEE MAKERS. REFER TO 6/P102.
- PROVIDE NEW 3/4" HW AND 1/2" HWR BACK TO WATER HEATER. REFER TO DETAIL 3/P102.
- 3/4" FW DROP TO TWO-HANDLE FAUCET, P-30. MOUNT FAUCET ON WALL. SEE K-SHEETS FOR EXACT LOCATION. PIPE 1/2" FW TO EACH FAUCET INLET WITH 6" SPREAD. PROVIDE BALL VALVE ABOVE CEILING. SEE RISER DIAGRAM 2/P-102.
- REMOVE ASSOCIATED PIPING, FLOOR DRAIN, AND/OR CLEAN OUT WITH DASHED LINES AND CAP AT MAIN.
- EXISTING TO REMAIN.
- REMOVE VENT PIPING IN WALL AND CAP AT MAIN.

## NOTES ABOUT (0,0) BENCHMARK ORIGIN

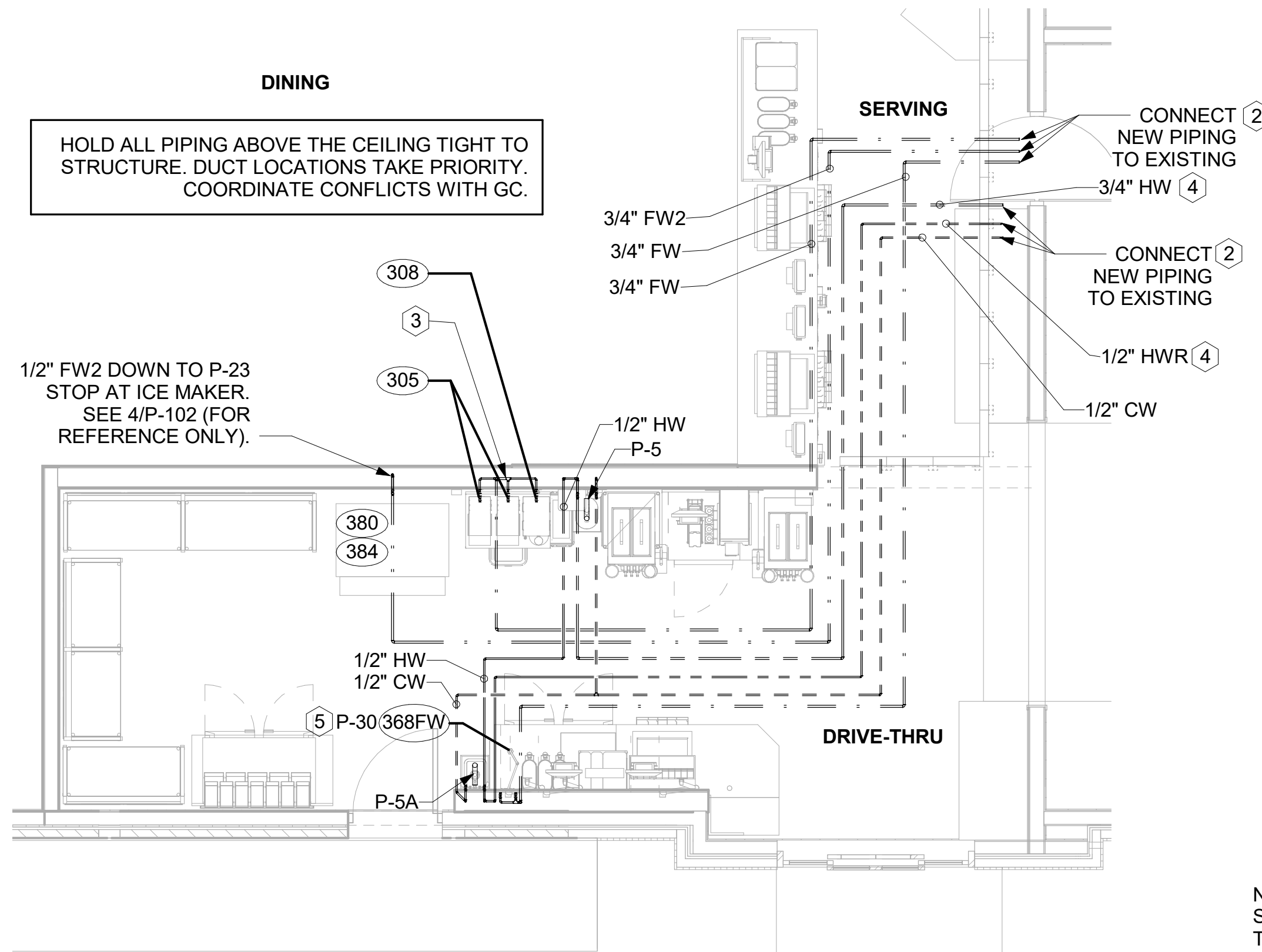
- THE (X=0, Y=0) BENCHMARK ORIGIN IS LOCATED AT THE INSIDE FACE OF FRAMING FOR THE EXTERIOR WALL AT THE CORNER WHERE SHOWN ON THE ADJACENT PLAN.
- IT IS EXTREMELY IMPORTANT FOR THE PLUMBING INSTALLER TO BECOME COMPLETELY FAMILIAR WITH THE FACE-OF-FRAMING POSITION AND ITS RELATION TO THE FLOOR SLAB CONSTRUCTION PRIOR TO BEGINNING THE UNDERSLAB PLUMBING ROUGH-IN..
- PLUMBING CONTRACTOR SHALL REVIEW STRUCTURAL DETAIL "TYPICAL SECTION @ EXTERIOR WALL" FOR PRECISE LOCATION OF FACE-OF-FRAMING WITH RESPECT TO THE SLAB INSTALLATION PRIOR TO LOCATING SLAB ROUGH-INS.



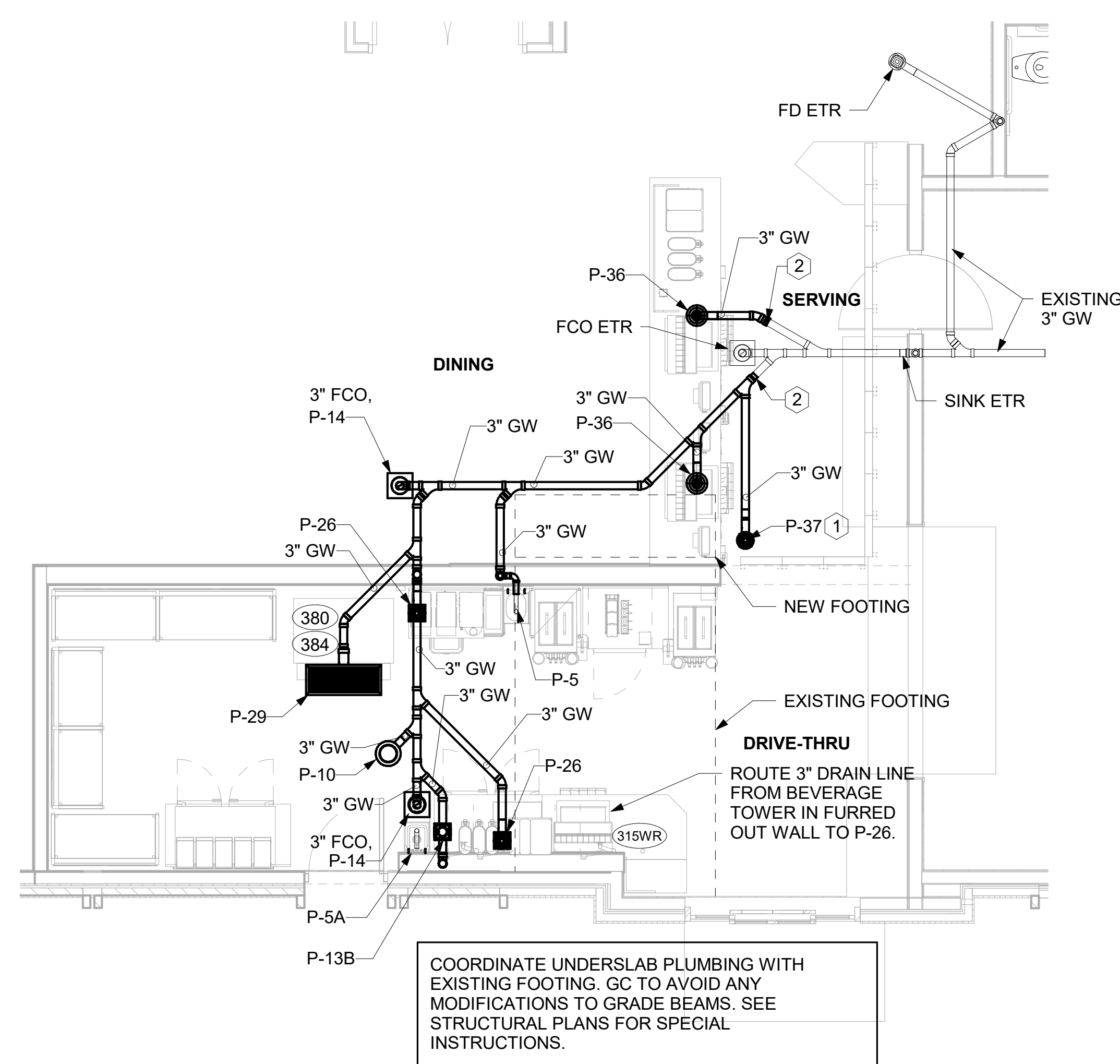
3 SLAB ROUGH-IN PLAN  
1/4" = 1'-0"



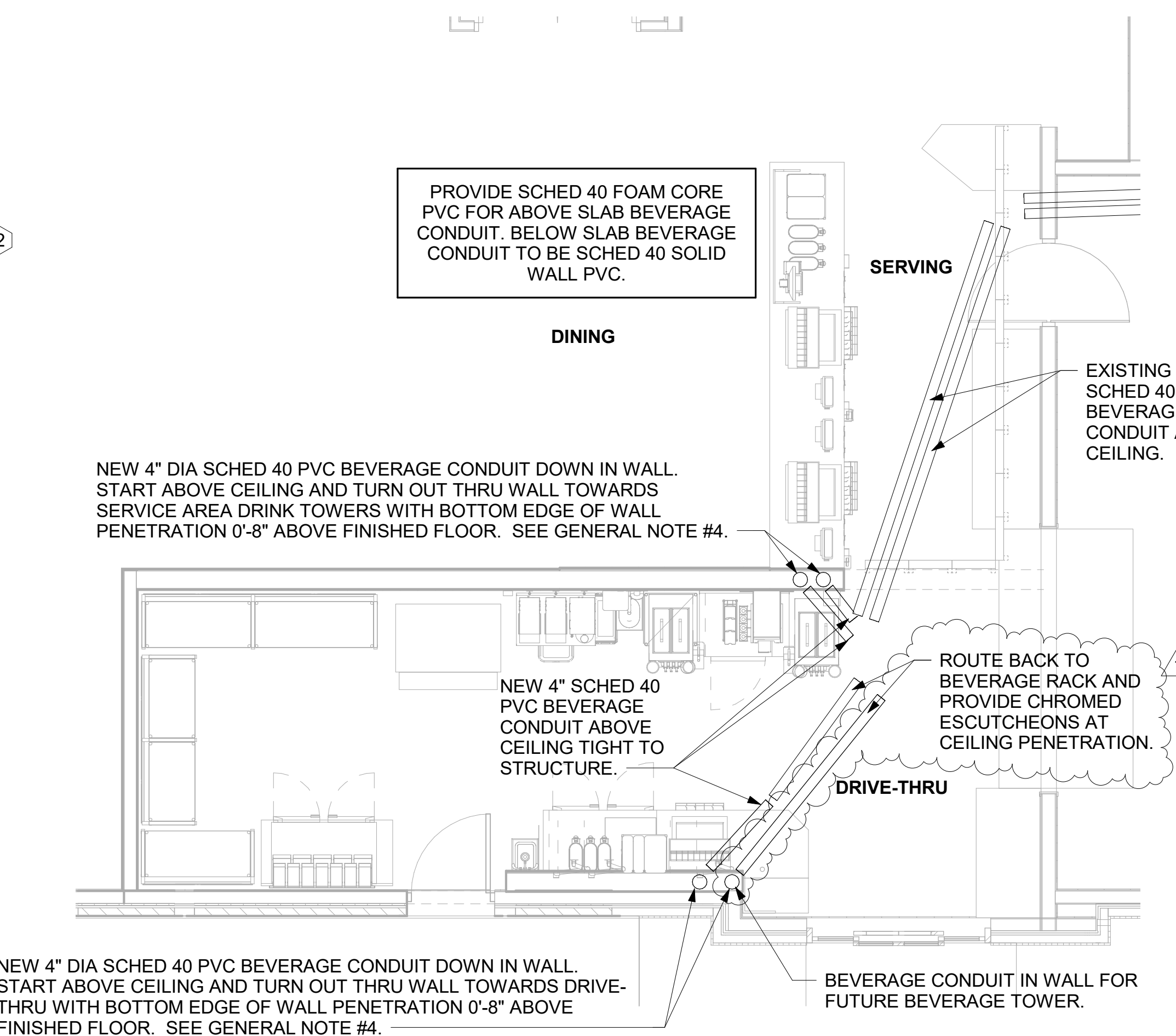
1 PLUMBING DEMOLITION PLAN  
1/4" = 1'-0"



4 WATER PIPING PLAN PLUMBING  
1/4" = 1'-0"



2 BELOW SLAB PLUMBING PLAN  
1/4" = 1'-0"



5 BEVERAGE CONDUIT PIPING PLAN  
1/4" = 1'-0"



Chick-fil-A

Chick-fil-A  
5200 Buffington Road  
Atlanta, Georgia  
30349-2998

HFA  
Creative Solutions  
Meaningful Places

HARRISON FRENCH  
& ASSOCIATES, LTD

t 479.273.7780

1705 S. Walton Blvd, Suite 3  
Bentonville, Arkansas 72712  
www.hfa-ac.com



CHICK-FIL-A  
DRIVE-THRU EXPANSION  
690 Northwest Blue Parkway  
Lee's Summit, MO 64086

FSR#02859

BUILDING TYPE / SIZE: S08\_N-SML-R

RELEASE: PRINTED FOR

OTP

REVISION SCHEDULE

NO. DATE DESCRIPTION

1 08/01/22 Owner Changes

CONSULTANT PROJECT # 27-22-50043

PRINTED FOR OTP

DATE 07/08/2022

DRAWN BY BLJ

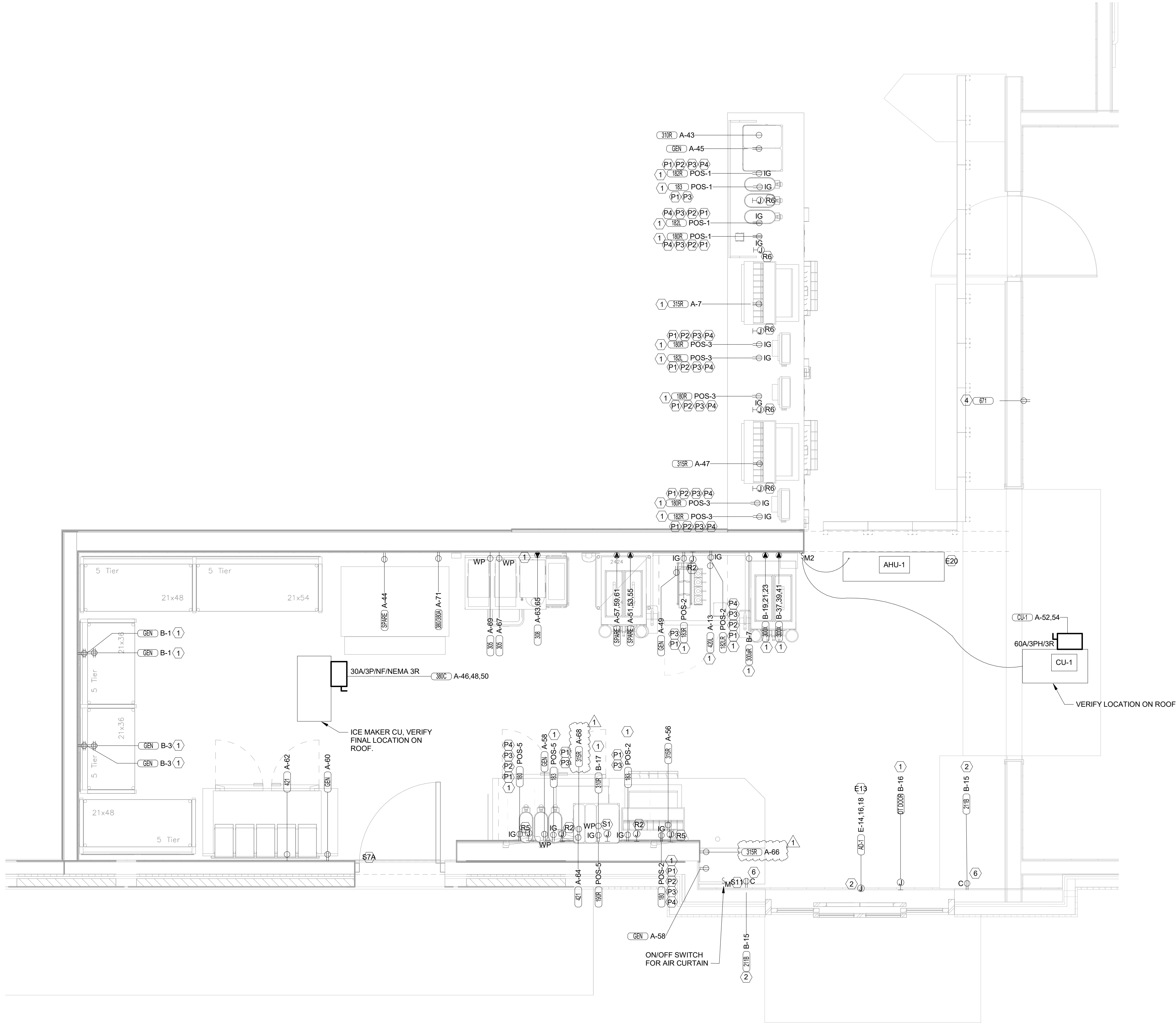
Information contained on this drawing and in all digital files produced for above named project may not be reproduced in any manner without express written or verbal consent from authorized project representatives.

SHEET PLUMBING FLOOR PLANS

SHEET NUMBER

P-101





**A3** ENLARGED SERVING AREA POWER PLAN  
1/2" = 1'-0"

**POWER PLAN KEYNOTES**

- 1 RECONNECT TO EXISTING CIRCUIT PREVIOUSLY FEEDING RELOCATED EQUIPMENT.
- 2 CONNECT TO EXISTING CIRCUIT VERIFY EXISTING CIRCUIT HAS SPARE CAPACITY.
- 4 E.C. TO RELOCATE EXISTING DEVICE AND EXTEND EXISTING CIRCUIT AS NEEDED FOR RELOCATION OF EXISTING DIGITAL MENU BOARDS. REPLACE EXISTING DEVICE WITH GFI EQUIVALENT AS NEEDED PER LOCAL CODE.
- 6 PROVIDE DUPLEX RECEPTACLE (SEE ELEVATIONS FOR MTG HT) IN AN ARLINGTON #DVR2W DOUBLE-GANG RECESSED BOX FOR THE FLY SYSTEM ITEMS. DO NOT CUT THE CORDSET FURNISHED WITH THE UNIT, BUT COIL THE CORD ON THE BACK OF THE UNIT AND TUCK INTO THE BACKBOX.

**SECURITY KEYNOTES**

- S1 PROVIDE SINGLE GANG JUNCTION BOX AND STAINLESS STEEL COVER PLATE WITH 7/8" HOLE IN CENTER. EXTEND 1" CONDUIT UP IN WALL TO ABOVE ACCESSIBLE CEILING.
- S7A EXTEND 3/4" RIGID CONDUIT FROM TOP OF STRIKE-SIDE DOOR FRAME CHANNEL TO ABOVE ACCESSIBLE CEILING.
- S9 PROVIDE SINGLE GANG JUNCTION BOX WITHOUT COVERPLATE. EXTEND 1/2" CONDUIT UP IN WALL TO ABOVE ACCESSIBLE CEILING.
- S11 EXTEND 1/2" CONDUIT FROM WINDOW'S FRAME MULLION (RIGHT SIDE) TO ABOVE ACCESSIBLE CEILING.

**POS DATA KEYNOTES**

- R2 PROVIDE SINGLE-GANG JUNCTION BOX WITH A 1" CONDUIT EXTENDING UP INTO THE CEILING SPACE FOR POS MONITOR(S). COVER PLATE PROVIDED BY OWNER'S POS SYSTEM VENDOR.
- R4 PROVIDE A 'RETROFIT' SINGLE GANG RING (CARLON #SC100RR) FOR OWNER'S DEVICE PLATE WITH A 1" EMPTY CONDUIT AT THE OPENING STUBBED UP INTO THE CEILING SPACE FOR OWNER'S DATA CABLES.
- R5 PROVIDE SINGLE-GANG JUNCTION BOX WITH A 1" CONDUIT EXTENDING UP INTO THE CEILING SPACE FOR POS TERMINAL. POS SYSTEM SUPPLIER WILL PROVIDE COVER PLATE ON BOX.
- R6 PROVIDE SINGLE-GANG EXTRA DEEP JUNCTION BOX MOUNTED ON THE MOUNTING PLATE WITHIN THE FRONT SERVING COUNTER CASEWORK. MOUNT BOX ADJACENT TO THE RECEPTACLE FOR EQUIPMENT 180. DO NOT MOUNT BOX BETWEEN EQUIPMENT 180 AND EQUIPMENT 182 RECEPTACLES.

**ENLARGED POWER PLAN KEYNOTES**

- E13 JUNCTION BOX ABOVE CEILING FOR AD-1 AT THE DRIVE-THRU WINDOW.
- E20 EXISTING SECURITY CAMERA, AND HME UNIT TO BE RELOCATED. VERIFY EXISTING CONDITIONS AND COORDINATE WITH THE OWERS SECURITY SYSTEM VENDOR TO RELOCATE THESE ITEMS AND POWER.

**POS POWER KEYNOTES**

- P1 PROVIDE ORANGE ISOLATED GROUND (IG) DUPLEX RECEPTACLE.
- P2 PROVIDE GROUND FAULT PROTECTION FOR THESE DEVICES VIA A GROUND FAULT CIRCUIT BREAKER IF LOCAL CODE DEFINES THIS A FOOD PREPARATION AREA.
- P3 USE TYPE MC CABLE FOR THE ISOLATED GROUND CIRCUIT: #12 HOT, NEUTRAL, GREEN GROUND, STRIPED ISOLATED GROUND. EACH 15 AMP HOMERUN SHALL BE DEDICATED TO A CIRCUIT BREAKER VIA DEDICATED CONDUCTORS WITHIN A CABLE ASSEMBLY. ALL MC CABLES SHALL BE RUN OVERHEAD ABOVE THE CEILING AND RACKED TOGETHER ON J-HOOKS. NO SPLICES IN ANY HOMERUN CABLES FROM FIRST RECEPTACLE TO BREAKER.
- P4 THE RECEPTACLE BACKBOX AND SYSTEM CABLE JUNCTION BOX FOR ITEMS 180 AND 182 SHALL BE TURNED HORIZONTAL. REFER TO THE KITCHEN EQUIPMENT ROUGH-IN ELEVATIONS FOR ADDITIONAL INFORMATION.

**POWER PLAN GENERAL NOTES**

- ALL SECURITY, POS, MUSIC, COMMUNICATIONS, AND POWER ROUGH-IN SHALL BE INSTALLED DURING THE FRAMING/ROUGH-IN PHASE OF CONSTRUCTION.
- REFER TO KITCHEN EQUIPMENT SHEETS FOR EQUIPMENT ELECTRICAL ROUGH-IN ELEVATIONS ABOVE FINISHED FLOOR.
- ALL EMPTY CONDUITS SHALL BE PROVIDED WITH PULL STRING.
- PROVIDE INSULATED BUSHING AT TERMINATION POINTS OF ALL CONDUITS FOR LOW VOLTAGE WIRING.
- THE ELECTRICAL INSTALLER SHALL COORDINATE THE ROUTING OF ALL CONDUIT IN THE BUILDING WITH OTHER TRADES (SPECIFICALLY THE DUCTWORK INSTALLATION) TO AVOID CONFLICTS OF SPACE REQUIREMENTS IN WALLS AND CEILING SPACES.

THE INFORMATION USED TO DEVELOP THE EXISTING CONDITIONS AS SHOWN ON THESE PLANS IS FROM PREVIOUS BUILDING DRAWINGS. WHAT WAS SHOWN ON PLAN AND WHAT IS ACTUALLY INSTALLED MAY VARY. FIELD VERIFY ALL EXISTING CONDITIONS.



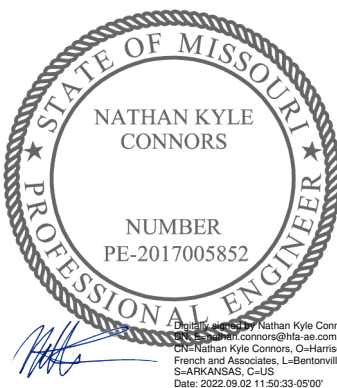
**Chick-fil-A**  
5200 Buffington Road  
Atlanta, Georgia  
30349-2998



**HARRISON FRENCH & ASSOCIATES, LTD.**

t.479.273.7780

1705 S. Walton Blvd., Suite 3  
Bentonville, Arkansas 72712  
www.hfs-ac.com



NATHAN KYLE CONNORS, P.E.  
PE-201700852  
HARRISON FRENCH & ASSOCIATES, LTD.  
E-2005011725-F

**CHICK-FIL-A**  
**DRIVE-THRU EXPANSION**  
690 NORTHWEST BLUE PARKWAY  
LEE'S SUMMIT, MO 64086

**FSR#02859**

BUILDING TYPE / SIZE: S08  
RELEASE: 21.05

**REVISION SCHEDULE**

NO.	DATE	DESCRIPTION
1	09/02/2022	OWNER CHANGES

CONSULTANT PROJECT #	27-22-50003
PRINTED FOR	OTP
DATE	05/03/2022
DRAWN BY	BWM

Information contained on this drawing and in all digital files produced for above named project may not be reproduced in any manner without express written or verbal consent from authorized project representatives.

SHEET  
ENLARGED POWER PLAN

SHEET NUMBER

**E-302**



4															
<div><div>Branch Panel: A</div><div>LOCATION: BOH SUPPLY FROM: MDP MOUNTING: FLUSH ENCLOSURE: NEMA 1</div><div>NEW PANELBOARD VOLTS: 120/208 Wye PHASES: 3 WIRES: 4</div><div>A.I.C. SERIES RATING: 65K/10K MAINS TYPE: MLO MAINS RATING: 250 A</div></div>															
E	NT	CKT	LOAD DESCRIPTION	TRIP	POLE	A	B	C	POLE	TRIP	LOAD DESCRIPTION	CKT	NT		
		1	TELEPHONE DT VIDEO	20 A	1	0.720	1.700			1	20 A	TEA BREWER	2		
		3	OFFICE GEN & MUSIC	20 A	1		0.720	1.700			1	20 A	TEA BREWER	4	
		5	OFFICE GEN/PRINTER	20 A	1				1.080	0.180	1	20 A	GENERAL OUTLET	6	
	N.J	7	DRINK TOWER (315R)	20 A	1	1.200	1.440			1	20 A	WATER HEATER	8		
		9	GENERAL OUTLETS	20 A	1		0.720	0.667			1	20 A	PANEL-POS THRU PIB	10	
		11	GENERAL OUTLETS	20 A	1				0.720	0.000	1	20 A	SPARE	12	
	N.J	13	UC REFRIG (420R)	20 A	1	0.564	0.000				1	20 A	SPARE	14	
		15	U.C. REFRIG	20 A	1		0.480	0.360			1	20 A	SECURITY SYSTEM	16	
		17	U.C. REFRIG	20 A	1				0.225	1.539	3	20 A	COOLER CONDENSER	18	
		19	U.C. REFRIG	20 A	1	0.225	1.539				--	--	--	20	--
		21	U.C. REFRIG	20 A	1		0.225	1.539				--	--	22	--
		23	SANDWICH SLIDE	20 A	1				1.840	0.000	1	20 A	SPARE	24	
		25	SANDWICH SLIDE	20 A	1	0.920	1.987				3	20 A	FREEZER CONDENSER	26	
		27	CARBONATOR	20 A	1		0.864	1.987			--	--	--	28	--
		29	CARBONATOR	20 A	1				0.864	1.987	--	--	--	30	--
		31	CARBONATOR	20 A	1	0.864	0.500				1	20 A	GREEZER HEAT TAPE	32	
		33	CARBONATOR	20 A	1		0.864	0.180			1	20 A	GENERAL OUTLET	34	
		35	BOOSTER PUMP	20 A	2				0.572	1.127	1	20 A	HOOD EXHAUST FAN 1	36	
	--	37	--	--	--	0.572	1.127				1	20 A	HOOD EXHAUST FAN 2	38	
		39	GENERAL OUTLETS	20 A	1		0.720	0.667			1	20 A	HOOD EXHAUST FAN 3	40	
		41	HOOD C.J FANS	20 A	1				0.450	0.667	1	20 A	HOOD EXHAUST FAN 4	42	
	N.J	43	DOUBLE JUICE DISP. (310R)	20 A	1	1.020	0.610				1	20 A	INTERIOR ICE MAKER (380/380A)	44	N.J
	N.J	45	GEN OUTLETS	20 A	1		0.180	1.704			3	25 A	ICE MAKER CU(380C)	46	N
	N.J	47	DRINK TOWER (315R)	20 A	1				1.200	1.704	--	--	--	48	--
	N.J	49	GENERAL OUTLETS	20 A	1	0.180	1.704				--	--	--	50	--
	N.J	51	ICE DREAM MACHINE (300XR)	20 A	3			1.800	2.600		2	40 A	CU-1	52	N
	--	53	--	--	--						--	--	--	54	--
	--	55	--	--	--	1.800	1.200				1	20 A	4 DRINK TOWERS (315R)	56	N.J
	N.J	57	ICE DREAM MACHINE (300XR)	30 A	3		2.280	0.360			1	20 A	GEN OUTLETS	58	N.J
	--	59	--	--	--				2.280	0.180	1	20 A	GEN OUTLETS	60	N.J
	--	61	--	--	--	2.280	0.756				1	20 A	UC REFRIG (421)	62	N.J
	N.J	63	COFFEE MAKER (308)	30 A	2		2.000	0.756			1	20 A	UC REFRIG (421)	64	N.J
	--	65	--	--	--				2.000	1.200	1	20 A	DRINK TOWER (315R)	66	N.J
	N.J	67	TEA BREWER (305)	20 A	1	1.650	1.200				1	20 A	DRINK TOWER (315R)	68	N.J
	N.J	69	TEA BREWER (305)	20 A	1		1.650	0.000			--	SPACE	SPACE	70	--
	N.J	71	INTERIOR ICE MAKER (380/380A)	20 A	1			0.610	0.000	--	--	SPACE	SPACE	72	--
Total Load:				25.76 kVA		25.02 kVA		25.65 kVA							
Total Amps:				215.5 A		208.5 A		214.6 A							
<div><div>Load Classification</div><div>Connected Load</div><div>Demand Factor</div><div>Estimated Demand</div><div>Panel Totals</div></div>															
HVAC				10312 VA		100.00%		10312 VA							
KITCHEN EQUIPMENT				23933 VA		65.00%		15556 VA		Total Conn. Load: 76.4 kVA					
KITCHEN REFRIG EQUIPMENT				27271 VA		65.00%		17726 VA		Total Est. Demand: 58.5 kVA					
MISCELLANEOUS				5582 VA		100.00%		5582 VA		Total Conn.: 212.2 A					
RECEPTACLES				6300 VA		100.00%		6300 VA		Total Est. Demand: 162.4 A					
MISCELANEOUS				3034 VA		100.00%		3034 VA							

D															
<div><div>Branch Panel: B</div><div>LOCATION: BOH SUPPLY FROM: MDP MOUNTING: FLUSH ENCLOSURE: NEMA 1</div><div>EXISTING PANELBOARD VOLTS: 120/208 Wye PHASES: 3 WIRES: 4</div><div>A.I.C. SERIES RATING: 65K/10K MAINS TYPE: MLO MAINS RATING: 250 A</div></div>															
C	NT	CKT	LOAD DESCRIPTION	TRIP	POLE	A	B	C	POLE	TRIP	LOAD DESCRIPTION	CKT	NT		
	N.J	1	GEN OUTLETS	20 A	1	0.360	12.464			3	100 A	PANEL F	2		
	N.J	3	GEN RECEPTS	20 A	1		0.360	12.4...		--	--	--	4	--	
		5	GENERAL OUTLETS	20 A	1				0.180	12...	--	--	--	6	--
	N.J	7	MILSHAKE DISPENSERS (300A)	20 A	1	0.120	0.000			1	20 A	SPARE	8		
		9	DISHWASHER	60 A	3		5.760	1.380			1	20 A	SGL RJ FRY FREEZER	10	
	--	11	--	--	--				5.760	1.840	1	20 A	FRY HOLDING STAT	12	
	--	13	--	--	--	5.760	1.840			1	20 A	FRY HOLDING STAT	14		
	N.J	15	FLY SYSTEMS	20 A	1		0.096	0.500			1	20 A	DRIVE THRU DOOR	16	
	N.J	17	COUBLE JUICE DISP (310R)	20 A	1			1.020	2.018	2	30 A	ICE MAKER	18		
	N.J	19	ICE DREAM MACHINE (300XR)	30 A	3	2.280	2.018			--	--	--	20	--	
	--	21	--	--	--		2.280	2.018			2	30 A	ICE MAKER	22	
	--	23	--	--	--			2.280	2.018	--	--	--	24	--	
		25	ROOF RECEPTS	20 A	1	0.900	1.920				1	20 A	THAWING CABINET	26	
		27	DINING RM OUTLETS	20 A	1		1.080	1.920			1	20 A	THAWING CABINET	28	
		29	DINING RM OUTLETS	20 A	1				1.080	0.000	1	20 A	EXISTING LOAD	30	
		31	FLY SYSTEM	20 A	1	0.245	0.000				1	20 A	SPARE	32	
		33	DOUBLE JUICE DISP	20 A	1		0.943	0.380			1	20 A	REFUSE ENCLOSURE	34	
		35	LEMON JUICER	20 A	1				0.360	0.360	1	20 A	T-500/SHUNT TRIP	36	
	N.J	37	ICE DREAM MACHINE (300XR)	20 A	3	1.800	2.150				2	30 A	COFFEE MAKER	38	
	--	39	--	--	--		1.800	2.150			--	--	--	40	--
	--	41	--	--	--				1.800	0.720	1	20 A	GEN OUTLET/DOORBELL	42	
	Total Load:				31.86 kVA		33.13 kVA		31.90 kVA						
	Total Amps:				265.5 A		276.1 A		265.9 A						
	<div><div>Load Classification</div><div>Connected Load</div><div>Demand Factor</div><div>Estimated Demand</div><div>Panel Totals</div></div>														
	KITCHEN EQUIPMENT				73231 VA		65.00%		47600 VA		Total Conn. Load: 96.9 kVA				
	KITCHEN REFRIG EQUIPMENT				17416 VA		65.00%		11320 VA		Total Est. Demand: 65.3 kVA				
	LIGHTING				96 VA		125.00%		120 VA		Total Conn.: 268.9 A				
	MISCELLANEOUS				360 VA		100.00%		360 VA		Total Est. Demand: 161.3 A				
	Motor				500 VA		125.00%		625 VA						
	RECEPTACLES				5285 VA		100.00%		5285 VA						

3												2																							
Branch Panel: C												EXISTING PANELBOARD												A.I.C. SERIES RATING: 65K/10K MAINS TYPE: MLO MAINS RATING: 250 A											
LOCATION: BOH SUPPLY FROM: MDP MOUNTING: FLUSH ENCLOSURE: NEMA 1												VOLTS: 120/208 Wye PHASES: 3 WIRES: 4																							
NT	CKT	LOAD DESCRIPTION										TRIP	POLE	A		B		C		POLE	TRIP	LOAD DESCRIPTION										CKT	NT		
	1	KITCHEN LTG										20 A	1	1.124 1.620						1	20 A	BUILDING SIGNAGE										2			
	3	KITCHEN LTG										20 A	1			1.553 1.620				1	20 A	BUILDING SIGNAGE										4			
	5	RESTROOM LTG & EF-3										20 A	1					0.748 0.000		1	20 A	SPARE										6			
	7	DINING AREA LTG										20 A	1	1.221 0.000						1	20 A	SPARE										8			
	9	PLAY AREA LTG										20 A	1			0.542 0.000				1	20 A	SPARE										10			
	11	DINING AREA LTG										20 A	1					0.801 0.624		1	20 A	SECURITY/FLAGPOLE LTG										12			
	13	SERVING AREA LTG										20 A	1	0.232 0.000						1	20 A	SPARE										14			
	15	SPARE										20 A	1			0.000 0.000				1	20 A	SPARE										16			
	17	MENUBOARDS										20 A	1					1.740 0.786		1	20 A	AWNING LTG										18			
	19	DIRECTIONAL SIGNS										20 A	1	1.080 0.416						1	20 A	BLDG LTG										20			
	21	PARKING LOT LTG										20 A	1			0.930 0.416				1	20 A	BLDG LTG										22			
	23	PARKING LOT LTG										20 A	1					0.930 0.000		1	20 A	SPARE										24			
	25	PARKING LOT LTG										20 A	1	0.930 0.000						1	20 A	SPARE										26			
	27	PARKING LOT LTG										20 A	1			0.930 0.000				1	20 A	SPARE										28			
	29	PARKING LOT LTG										20 A	1					0.930 0.000		1	20 A	SPARE										30			
	31	PARKING LOT LTG										20 A	1	0.930 0.000						1	20 A	SPARE										32			
	33	MENUBOARD COVE LTG										20 A	1			0.160 0.000				1	20 A	SPARE										34			
	35	FRZ/COOLER LTG										20 A	1					1.000 0.000		1	20 A	SPARE										36			
	37	MAIN ID SIGN										20 A	1	1.620 0.780						1	20 A	DRIVE - THRU CANOPY										38			
	39	MAIN ID SIGN										20 A	1			1.620 1.620				1	20 A	BUILDING SIGNAGE										40			
	41	MAIN ID SIGN										20 A	1					1.620 1.620		1	20 A	BUILDING SIGNAGE										42			
											Total Load:		9.95 kVA		9.39 kVA		10.80 kVA																		
											Total Amps:		83.7 A		78.2 A		90.7 A																		
Load Classification												Connected Load				Demand Factor				Estimated Demand				Panel Totals											
LIGHTING												30140 VA				125.00%				37675 VA				Total Conn. Load: 30.1 kVA											
Load Classification												0 VA				0.00%				0 VA				Total Est. Demand: 37.7 kVA											
																								Total Conn.: 153.7 A											