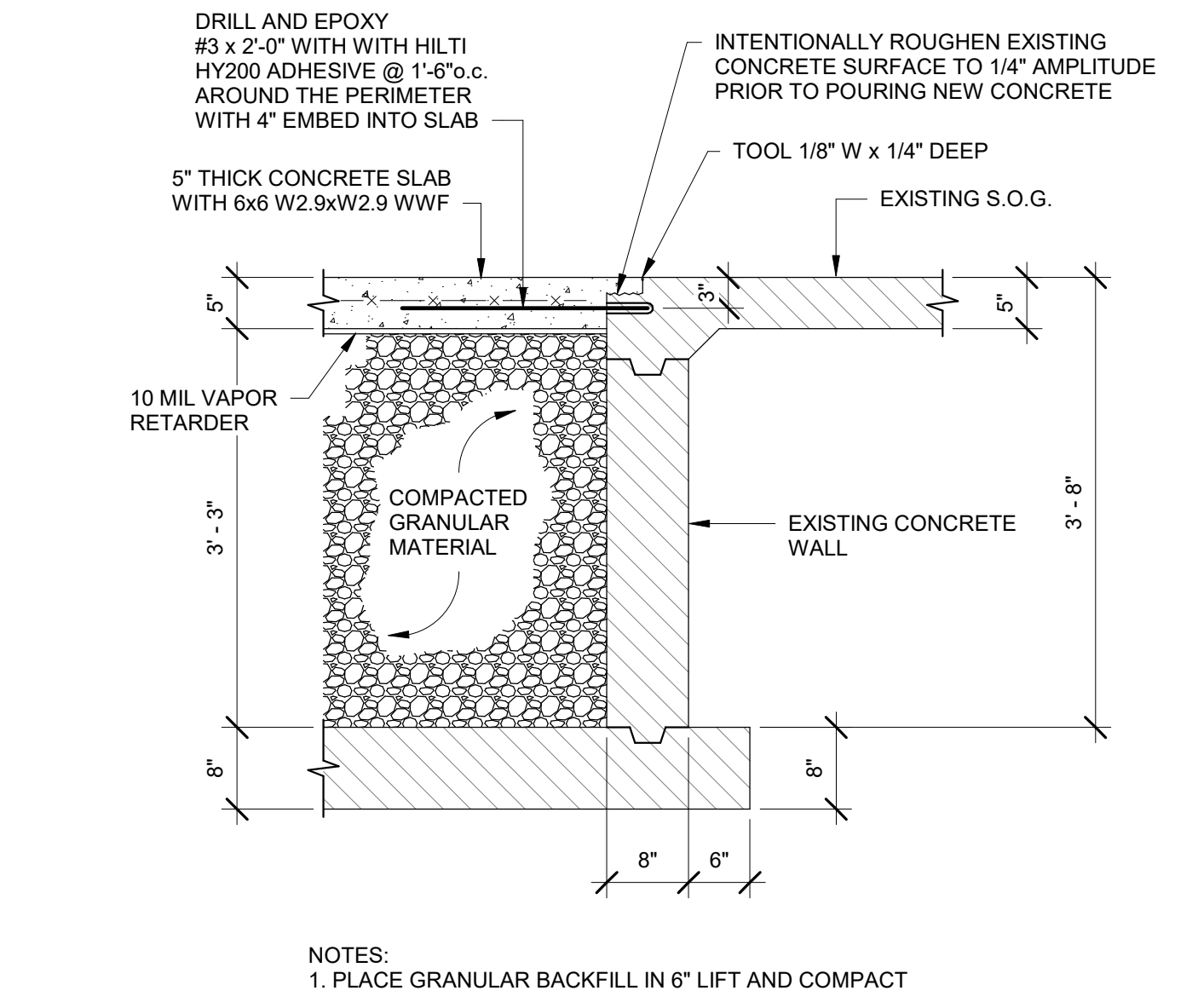
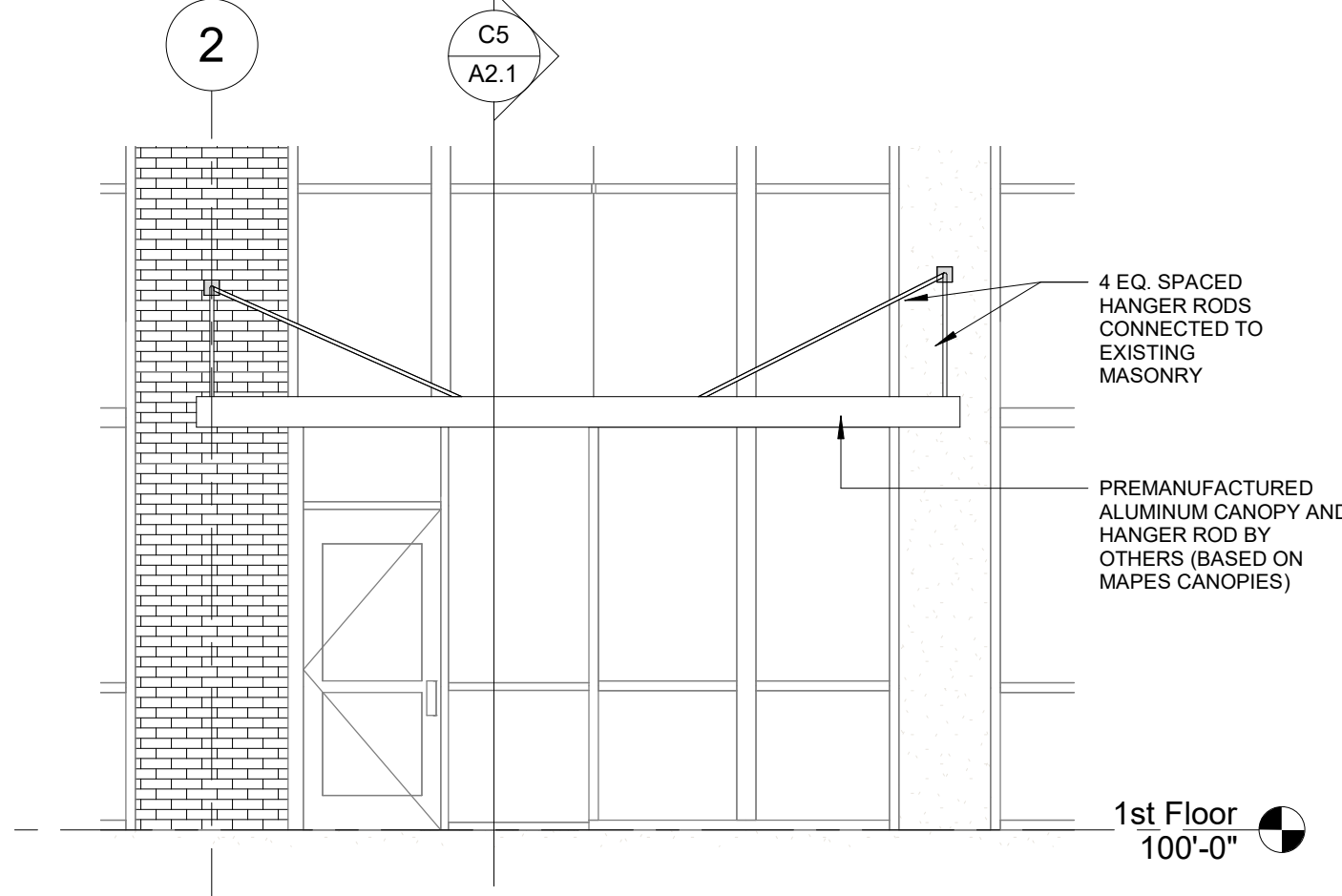


C5 CANOPY SECTION  
1/2" = 1'-0"

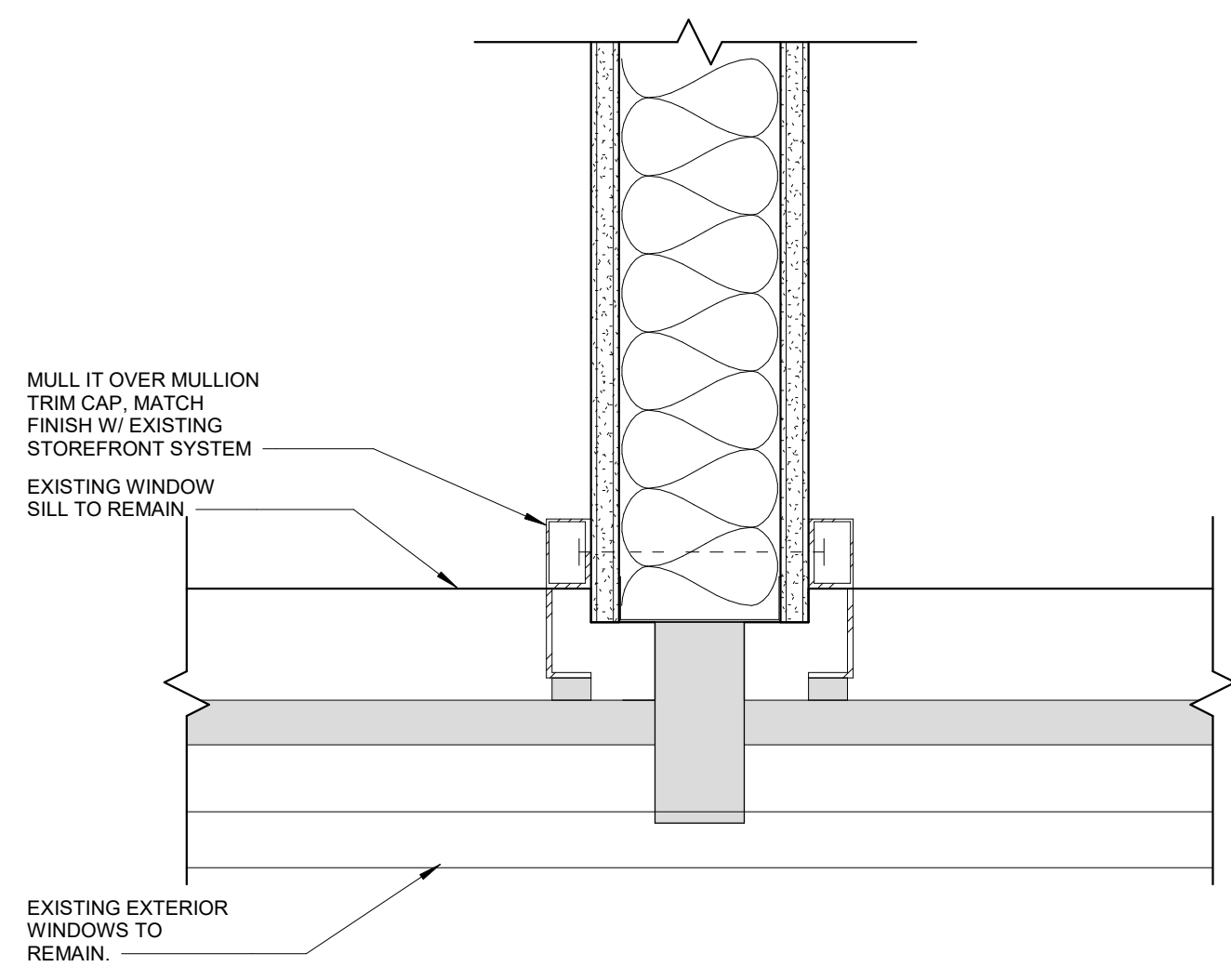


D4 POOL INFILL DETAIL  
3/4" = 1'-0"



C4 CANOPY ELEVATION  
1/4" = 1'-0"

FFE SCHEDULE			
TYPE MARK	DESCRIPTION	RESPONSIBILITY	COMMENTS
A1015	PHONE, DESK	OFOI	POWER AND DATA AS REQUIRED, RE: MEP
A1080	MIRROR	OFOI	BLOCKING AS REQUIRED, RE: SPECS
A5075	SOAP DISPENSER	OFOI	
A5080	PAPER TOWEL DISPENSER	OFOI	BLOCKING AS REQUIRED
A5108	SHARPS	OFOI	BLOCKING AS REQUIRED
A5108a	GRAB BAR, HORIZONTAL, 36"	OFOI	BLOCKING AS REQUIRED, RE: SPECS
A5108b	GRAB BAR, HORIZONTAL, 42"	OFOI	BLOCKING AS REQUIRED, RE: SPECS
A5108c	GRAB BAR, VERTICAL, 18"	OFOI	BLOCKING AS REQUIRED, RE: SPECS
A5108d	COAT HOOK	OFOI	BLOCKING AS REQUIRED, RE: SPECS
A5200	DISPENSER TOILET PAPER	OFOI	BLOCKING AS REQUIRED
F0205	SIZE CHAIR, W/ ARMIS	VFVI	PROVIDED BY JOHN A. MARSHALL
F0300	CHAIR, TASK	VFVI	PROVIDED BY JOHN A. MARSHALL
F0306	CHAIR, WAITING ROOM, BARIATRIC	VFVI	PROVIDED BY JOHN A. MARSHALL
F0430	MOBILE FILE CABINET	VFVI	PROVIDED BY JOHN A. MARSHALL
F0750	TABLE	VFVI	PROVIDED BY JOHN A. MARSHALL
F2010	STEP TRASHCAN	OFOI	
F0305	DRY ERASE WHITEBOARD	OFOI	
K4665	MICROWAVE	OFOI	POWER REQUIRED, RE: MEP
M0506	MONITOR, TELEVISION, 55"	OFOI	BRACKET, OPCI, BLOCKING AS REQUIRED, POWER & CABLE AS REQUIRED, RE: MEP, COORDINATE FINAL TV SIZE, BRACKET & MOUNTING HEIGHT W/ OWNER.
M1801	COMPUTER MONITOR	OFOI	
M1802	DUAL COMPUTER MONITOR	OFOI	POWER AND DATA AS REQUIRED, RE: MEP
M1825	PRINTER	OFOI	POWER AND DATA AS REQUIRED, RE: MEP
M1840	PRINTER/COPIER/FAX COMBINATION	OFOI	POWER AND DATA AS REQUIRED, RE: MEP
M3073	INFECTIOUS WASTE BASKET	OFOI	
M4020	SCALE	OFOI	
M7040	WHEELED ERGO TABLE FOR LAPTOP	OFOI	
M8133	ERGONOMETER	OFOI	POWER REQUIRED, RE: MEP
M8185	TREADMILL	OFOI	POWER REQUIRED, RE: MEP
M9025	EXAM TABLE W/ CABINET	OFOI	
U1000	CARD READER	OFOI	POWER AND DATA AS REQUIRED, RE: MEP
U1002	PPT BOOTH	OFOI	
U1008	ROWING MACHINE	OFOI	
U1007	ELLIPTICAL	OFOI	POWER REQUIRED, RE: MEP
U1008	LEG PRESS	OFOI	
U1009	REBOUNDER	OFOI	
U1010	MUSTED	OFOI	
U1011	RECLUMBENT BIKE	OFOI	
U1012	THERAPY STAIRS	OFOI	
U1013	ENF TREATMENT TABLE	OFOI	
U1014	BARIATRIC PARALLEL BARS	OFOI	
U1015	18"x5" TABLE	OFOI	

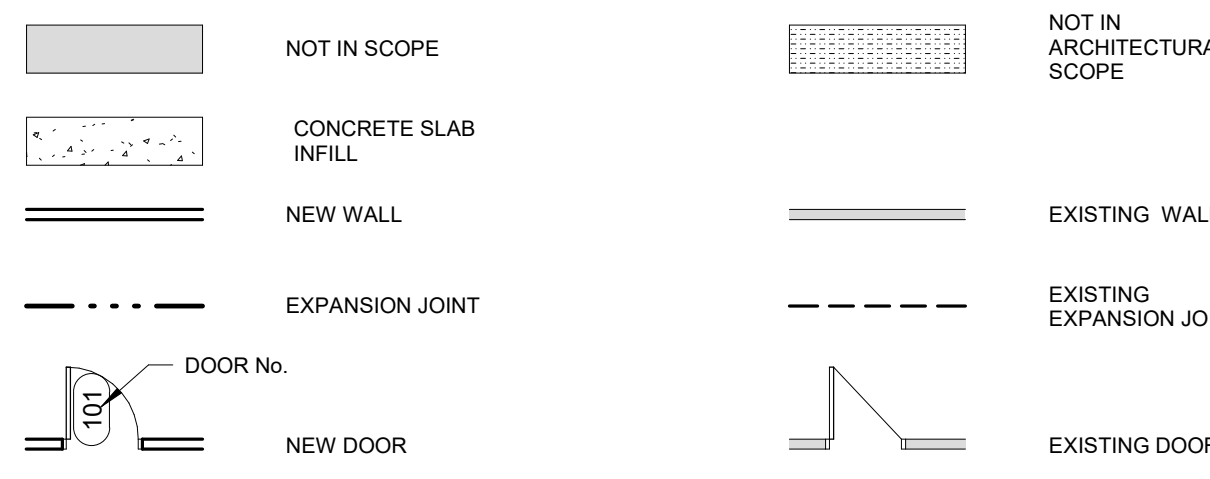


C3 MULL-IT OVER DETAIL  
3" = 1'-0"

## GENERAL PLAN NOTES

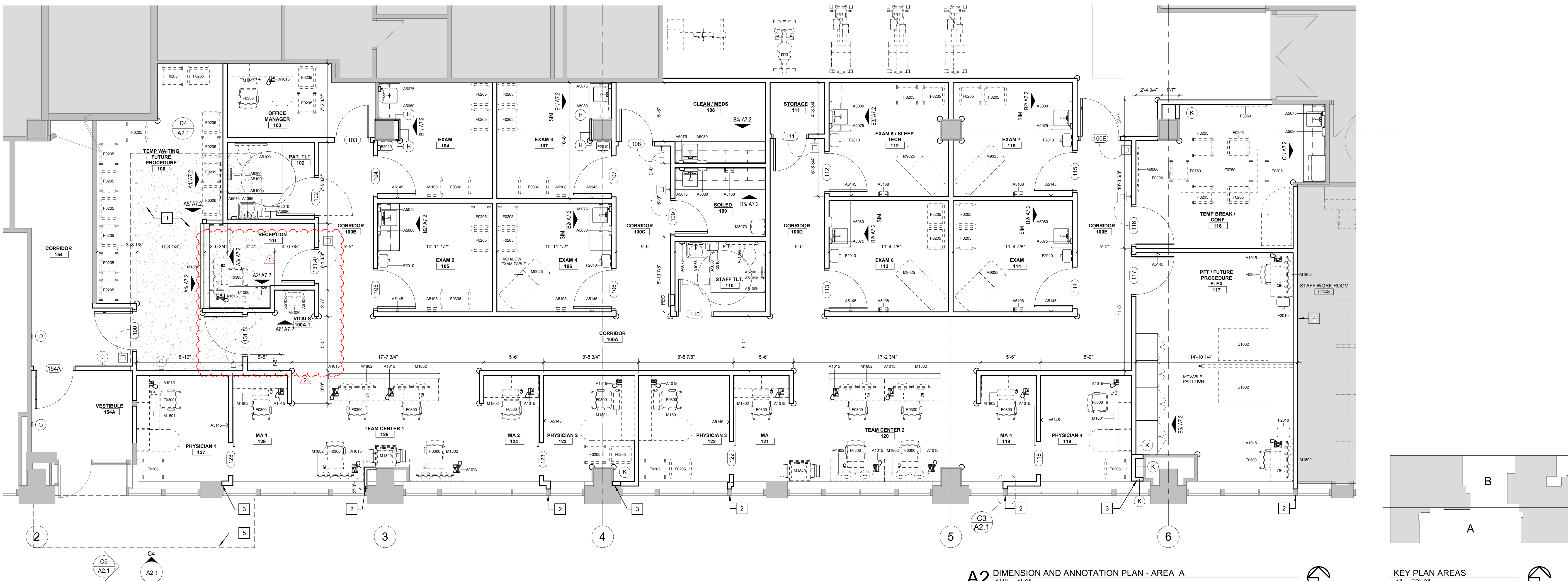
1. REFER TO GENERAL NOTES, LEGENDS & SYMBOLS SHEET FOR ADDITIONAL GENERAL NOTES AS APPLICABLE.
2. DO NOT SCALE DRAWINGS
3. THE WORD "ALIGN" AS USED IN THESE DOCUMENTS SHALL SUPERSEDE ANY DIMENSIONAL INFORMATION GIVEN.
4. TYPICAL DIMENSIONS ARE TO FACE OF CONCRETE, DRYWALL, CURTAIN WALL, ETC., OR TO COLUMN CENTERLINE. DIMENSIONS AT WINDOWS ARE TYPICALLY TO FACE OF FRAME. REFER TO PLAN DETAILS FOR ADDITIONAL INFORMATION.
5. IF MATERIAL SUSPECTED OF CONTAINING HAZARDOUS MATERIALS ARE ENCOUNTERED, DO NOT DISTURB. IMMEDIATELY NOTIFY ARCHITECT AND OWNER. OWNER SHALL COORDINATE WITH CONTRACTOR ON THE REMOVAL OF SUCH ITEMS. WORK MAY PROCEED AFTER HAZARDOUS MATERIAL HAS BEEN REMOVED.
6. CONTRACTOR SHALL FURNISH AND INSTALL CONCEALED FIRE-TREATED WOOD BLOCKING BEHIND ALL CABINETS, TOILET ACCESSORIES, PLUMBING FIXTURES, AND OTHER WALL MOUNTED ITEMS AS REQUIRED FOR ADEQUATE SUPPORT.
- REMODEL/RENOVATION NOTES**
7. THE CONTRACTOR SHALL FIELD VERIFY EXISTING CONDITIONS AND NOTIFY ARCHITECT OF ANY INCONSISTENCIES OR DISCREPANCIES WITH THE PROJECT DOCUMENTS. ACCESS TO THE SITE AND/OR SPACE UNDER CONSTRUCTION DURING BIDDING AND CONSTRUCTION SHALL BE COORDINATED WITH THE OWNER.
8. THE CONTRACTOR SHALL BE RESPONSIBLE FOR EXAMINING AND CONFIRMING ALL SUBSTRATE CONDITIONS WHERE NEW MATERIALS ARE APPLIED. THE SUBSTRATE SHALL BE SMOOTH AND FREE OF DEFECTS AND SHALL CONFORM TO THE REQUIREMENTS OF THE FINISHED MATERIAL MANUFACTURERS RECOMMENDATIONS.
9. UPON VERIFICATION OF THE EXISTING CONDITIONS, THE CONTRACTOR SHALL DETERMINE AND RECOMMEND THE BEST ACTION TO MINIMIZE THE EXTENT OF REMOVAL WORK FOR INSTALLATION OF NEW WORK.
10. ALL EXISTING CONSTRUCTION TO REMAIN SHALL BE PATCHED, REPAIRED, AND PREPPED AS REQUIRED FOR NEW FINISH APPLICATION.

## FLOOR PLAN LEGEND



## KEYNOTES - FLOOR PLAN AREA A

NUMBER	COMMENTS
1	REINFORCED WITH 6x6x1/2x3 WWR. PROVIDE 10 MIL VAPOR RETARDER BETWEEN SLAB AND GRANULAR FILL. DRILL AND EPOXY #3x2'-0" WITH HILTI HY200 ADHESIVE AROUND THE PERIMETER WITH 4" EMBED INTO THE EXISTING SLAB. THE TOP OF THERAPY POOL SLAB SHALL MATCH EXISTING SLAB AROUND THE PERIMETER. RE INFILL DETAIL
2	OFFSET WALL PARTITION AS REQUIRED TO CENTER WALL ON EXISTING MULLION. INSTALL MULLION CAP RE: DETAIL
3	TERMINATE WALL PARTITION INTO COLUMN.
4	NEW BASE AND PAINT TO MATCH ADJACENT FINISHES
5	NEW PREFINISHED CANOPY



A2 DIMENSION AND ANNOTATION PLAN - AREA A  
1/4" = 1'-0"



KEY PLAN AREAS  
1" = 50'-0"



PULMONARY CLINIC - PHASE 1  
SAINT LUKE'S EAST HOSPITAL  
FIRST FLOOR MOB  
20 NE SAINT LUKE'S BLVD.  
LEE'S SUMMIT, MO 64086

Date 8/15/22  
Job Number 3-22015  
Drawn By KDS  
Checked By ABD

Number	Date	Description
1	8.19.22	ASI 1
2	8.31.22	CITY

A2.1

© 2022 ACI/BOLAND, Inc.  
FIRST FLOOR DIMENSION AND ANNOTATION PLAN AREA A



8/31/2022 1:49:55 PM  
Samuel K. Beckman - Architect  
License - Missouri WA-2011012130

ACI  
BOLAND  
ARCHITECTS

ACI/Boland, Inc.  
Kansas City | St. Louis  
1710 Wyandotte  
Kansas City, MO 64108  
T: 816.763.9600  
Licensee's Certificate of Authority Number:  
Missouri: #000958