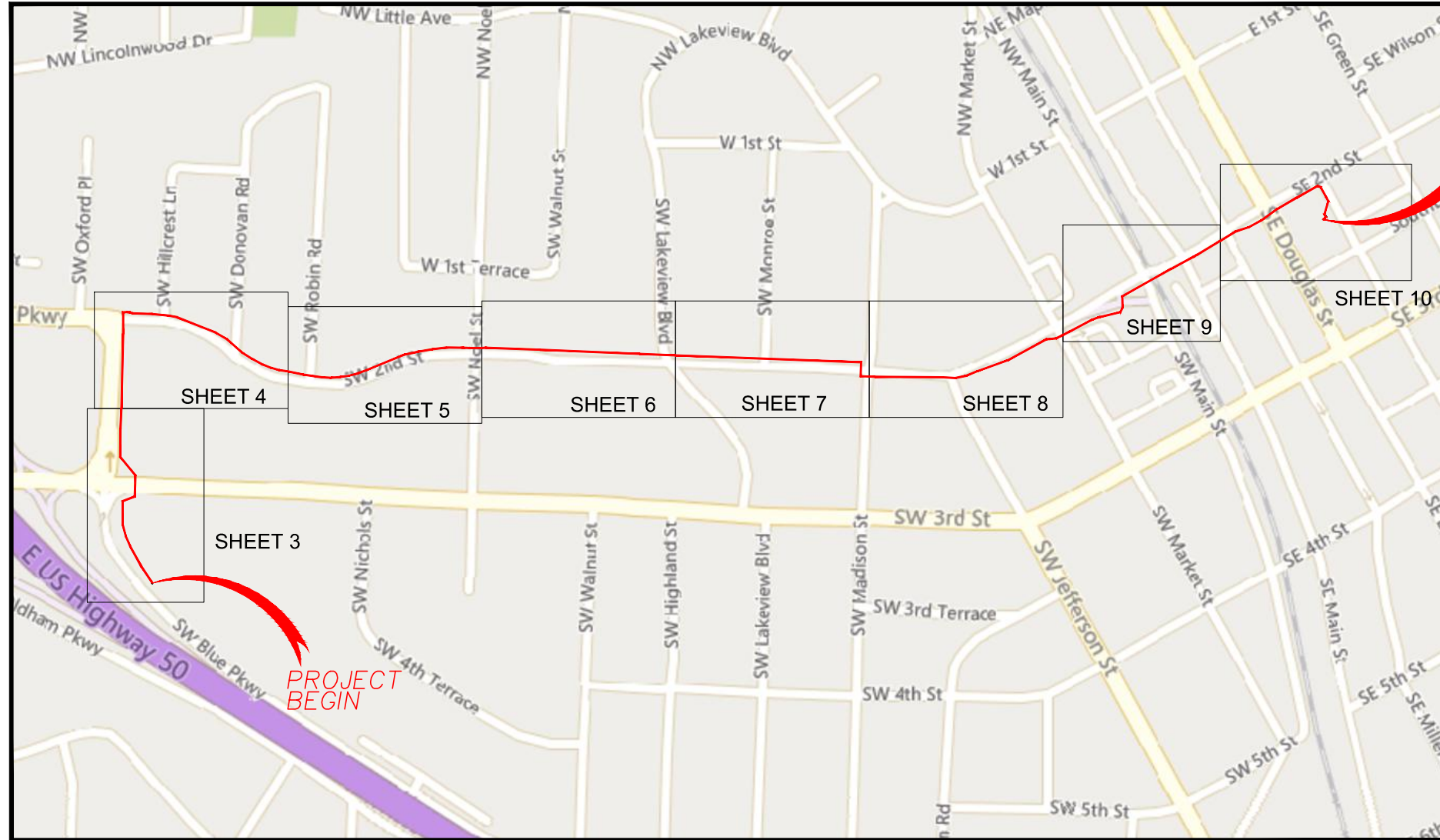


ADDRESS: 207 SE DOUGLAS ST, LEES SUMMIT, MO 64063
PROJECT NUMBER: 36384

WORK PLAN INDEX	
SHEET	DESCRIPTION
1	COVER SHEET
2	GENERAL NOTES/LEGEND
3-10	DESIGN PLAN SHEETS
11	DETAIL SHEET
12	TYPICAL DETAILS
13	FINAL QUANTITIES



Vicinity Map

E22196M1 207 SE DOUGLAS ST LSMO

CONTACT INFO

BRANDON MYER
CONSTRUCTION MANAGER
816-206-4257
BRANDON.MYER@UPNFIBER.COM
RYAN CATRON
CONSTRUCTION SUPERVISOR - MO
816-381-0967
RYAN.CATRON@UPNFIBER.COM



PE Stamp & Approval

REV. NO.	DATE	REVISIONS DESCRIPTION	REVISIONS

COVER SHEET	2022
207 SE DOUGLAS ST	
LEES SUMMIT, MO	

drawn by: JAR
checked by: APV
approved by: CJL
project no.: 36384
drawing no.: UPN-78
date: 8/15/2022

DWG: C:\Temp\AcPublish_21400\UPN-78_207 SE Douglas St_Plans.dwg USER: jreckman
DATE: Aug 15, 2022 9:27am XREFS: UPN-78_207 SE Douglas St_Base

LEGEND-KEY

	UTILITY POLE		GAS
	UTILITY MANHOLE		WATER
	UTILITY HANDHOLE		TELEPHONE
	TELEPHONE PED - CROSS BOX		ELECTRIC
	EXISTING MANHOLE		SANITARY SEWER (SEW)
	EXISTING HANDHOLE		STORM SEWER
	EXISTING COIL		FENCE
	EXISTING AERIAL COIL		CABLE TV
	EXISTING DOWN GUY		STEAM
	EXISTING SPLICE POINT		OIL
	TREE		UNKNOWN UTILITY
	PROPOSED MANHOLE		RIGHT OF WAY
	PROPOSED HANDHOLE		EDGE OF PAVEMENT
	PROPOSED COIL		PROPERTY LINE
	PROPOSED AERIAL COIL		EXISTING CONDUIT
	PROPOSED DOWN GUY		EXISTING AERIAL FIBER
	PROPOSED SPLICE POINT		EXISTING STRAND
	PROPOSED FIBER DISTRIBUTION PANEL		PROPOSED CONDUIT
	PROPOSED BORE PIT		PROPOSED AERIAL FIBER
	PROPOSED PULL BOX		PROPOSED STRAND
	PROPOSED RUNNING LINE		
	FLOW LINE		
	FIBER OPTIC CABLE		
	EDGE OF PAVEMENT		
	CUT & RESTORE CONC./ASPH.		
	INLET		
	INLET GRATE		

1. CONTRACTOR MUST OBTAIN LOCATES PRIOR TO ANY TYPE OF EXCAVATION.
2. CONTRACTOR IS RESPONSIBLE FOR OBTAINING THE NECESSARY REQUIRED PERMITS PERTAINING TO ALL ASPECTS OF THE PROJECT AND MUST HAVE THE APPROPRIATE PERMITS AT THE JOB SITE.
3. ALL CABLE WILL BE PLACED AT STANDARD MINIMUM DEPTH OF 36" IN UNPAVED AREAS AND 48" MINIMUM BELOW STREETS AT ALL TIMES, UNLESS OTHERWISE NOTED IN THE PLANS.
4. ANY LANDSCAPING WILL BE REPLACED TO EQUAL OR BETTER THAN THAT WHICH EXISTED PRIOR TO WORK.
5. PROJECT SITE WILL BE PROPERLY SECURED PRIOR TO THE END OF EACH DAY.
6. ALL WORK IS TO BE IN ACCORDANCE WITH AUTHORITIES HAVING JURISDICTION IN THE WORK ZONE.
7. CONTRACTORS ARE ADVISED TO CONTACT UPN FOR ANY ADDITIONAL INFORMATION OR CLARIFICATION CONCERNING SCOPE OF WORK OR THE REQUIREMENTS NECESSARY FOR PROJECT COMPLETION.
8. ANY FIELD ADJUSTMENTS TO THE PROPOSED PLAN MUST BE APPROVED BY AN APPROPRIATE UPN REPRESENTATIVE.
9. BEFORE CONSTRUCTION BEGINS, CONTRACTOR SHALL TAKE THE APPROPRIATE PRECAUTIONS TO AVOID ANY POTENTIAL OBSTRUCTIONS PRIOR TO PROCEEDING WITH WORK.
10. OLSSON ASSUMES NO RESPONSIBILITY FOR EXISTING UTILITY LOCATIONS (HORIZONTAL OR VERTICAL) OR RIGHT-OF-WAY LOCATION. THE EXISTING UTILITIES AND RIGHT-OF-WAY SHOWN ON THESE PLANS HAVE BEEN PLOTTED FROM THE BEST INFORMATION AVAILABLE. IT IS HOWEVER , THE RESPONSIBILITY OF THE CONTRACTOR TO FIELD VERIFY THE LOCATION OF ALL UTILITIES AND RIGHT-OF-WAY PRIOR TO COMMENCEMENT OF ANY CONSTRUCTION.

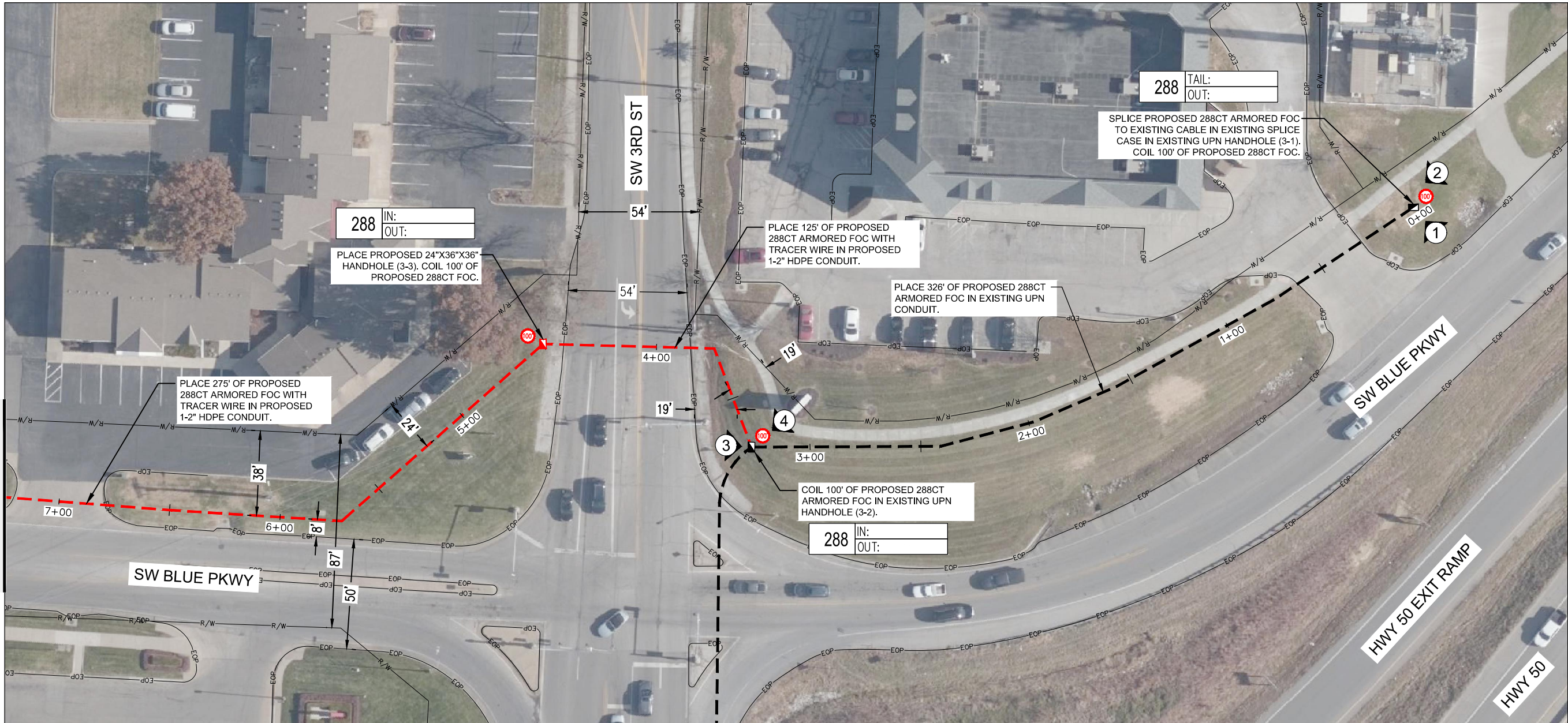


PE Stamp & Approval

REV. NO.	DATE	REVISIONS DESCRIPTION

GENERAL NOTES/LEGEND	2022
207 SE DOUGLAS ST	
LEES SUMMIT, MO	

drawn by: JAR
 checked by: AFV
 approved by: CJS
 project no.: 36394
 drawing no.: UPN-78
 date: 8/15/2022



EXISTING HANDHOLE 1



EXISTING HANDHOLE 2

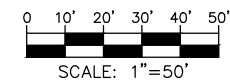


EXISTING HANDHOLE 3



PROPOSED PATH 4

E22196M1 207 SE DOUGLAS ST LSMO



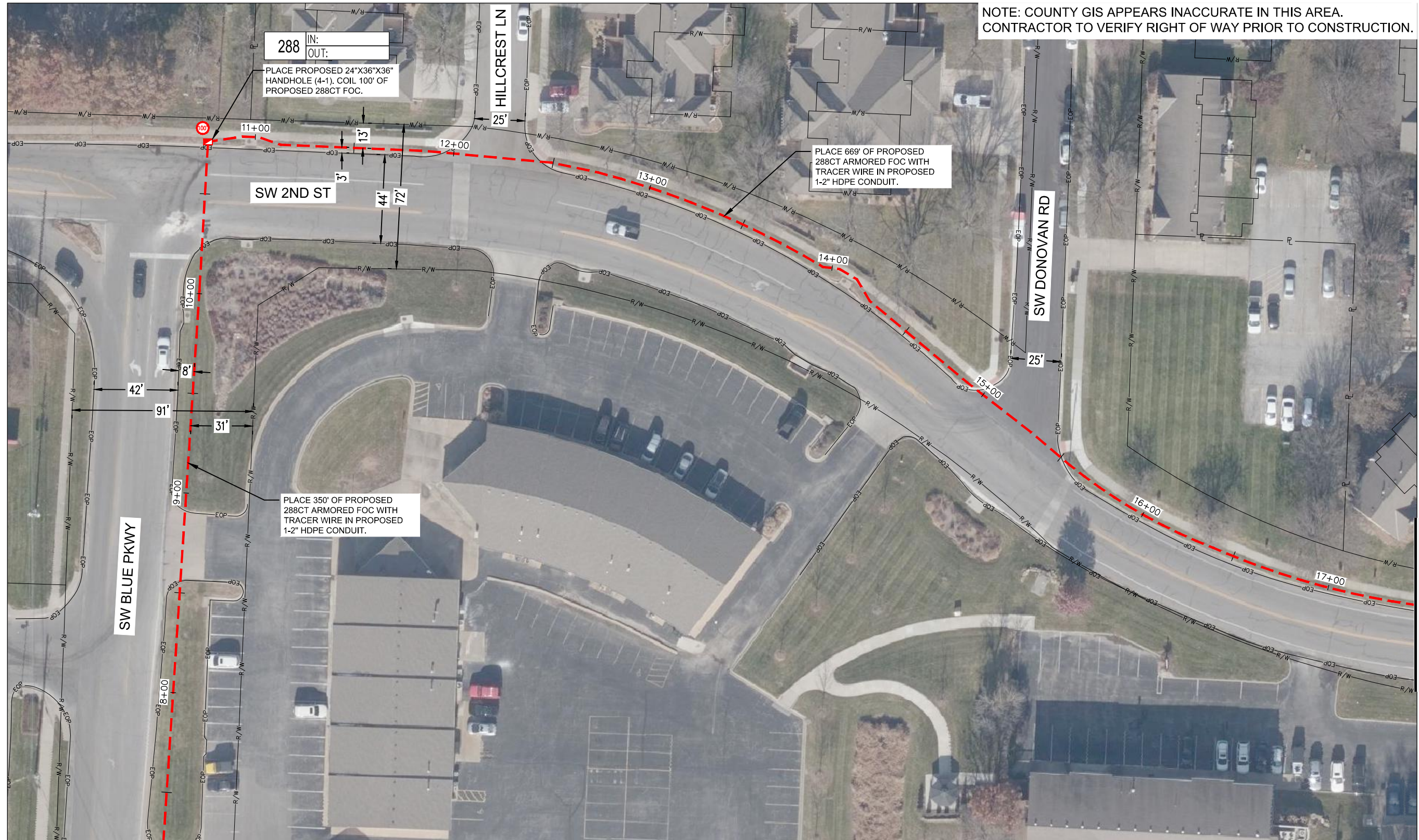
PE Stamp & Approval

REV. NO.	DATE	REVISIONS DESCRIPTION

PROJECT SHEET	2022
207 SE DOUGLAS ST	
LEES SUMMIT, MO	

drawn by:	JAR
checked by:	APV
approved by:	CJS
project no.:	36394
drawing no.:	UPN-78
date:	8/15/2022

SHEET
3 OF 13

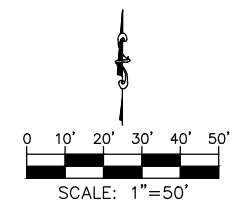


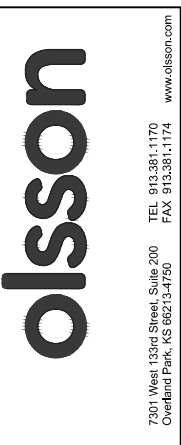

NOTE: COUNTY GIS APPEARS INACCURATE IN THIS AREA. CONTRACTOR TO VERIFY RIGHT OF WAY PRIOR TO CONSTRUCTION.

MATCH TO SHEET 3

MATCH TO SHEET 5

E22196M1 207 SE DOUGLAS ST LSMO



PE Stamp & Approval

REV. NO.	DATE	REVISIONS DESCRIPTION

REVISIONS

PROJECT SHEET

207 SE DOUGLAS ST

LEES SUMMIT, MO

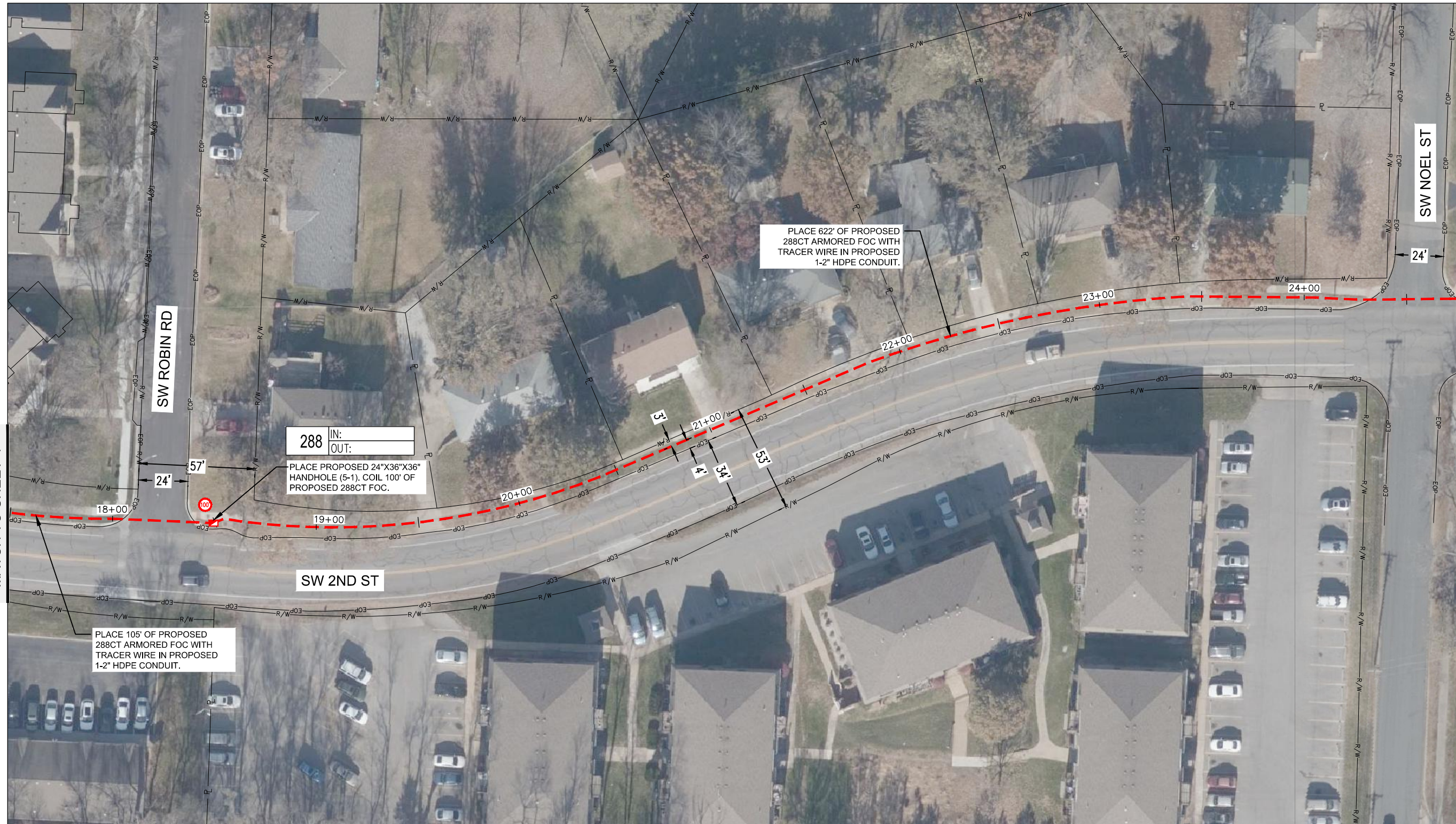
2022

drawn by:	JAR
checked by:	APV
approved by:	CJL
project no.:	36394
drawing no.:	UPN-78
date:	8/15/2022

SHEET

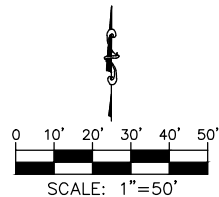
4 OF 13

MATCH TO SHEET 4



MATCH TO SHEET 6

E22196M1 207 SE DOUGLAS ST LSMO



PE Stamp & Approval

REV. NO.	DATE	REVISIONS DESCRIPTION

PROJECT SHEET	2022
207 SE DOUGLAS ST	
LEES SUMMIT, MO	

drawn by: JAR	
checked by: AFV	
approved by: CJL	
project no.: 36394	
drawing no.: UPN-78	
date: 8/15/2022	

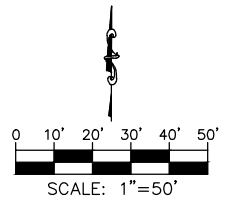
SHEET 5 OF 13

MATCH TO SHEET 5



MATCH TO SHEET 7

E22196M1 207 SE DOUGLAS ST LSMO



PE Stamp & Approval

REV. NO.	DATE	REVISIONS DESCRIPTION

PROJECT SHEET	2022
207 SE DOUGLAS ST	
LEES SUMMIT, MO	

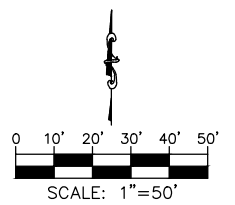
drawn by: JAR	
checked by: APV	
approved by: CJL	
project no.: 36394	
drawing no.: UPN-78	
date: 8/15/2022	

MATCH TO SHEET 6



MATCH TO SHEET 8

E22196M1 207 SE DOUGLAS ST LSMO



7301 West 133rd Street, Suite 200
Overland Park, KS 66213-4750
TEL 913.351.1170
FAX 913.351.1174
www.olson.com

PE Stamp & Approval

REV. NO.	DATE	REVISIONS DESCRIPTION	REVISIONS

PROJECT SHEET

207 SE DOUGLAS ST

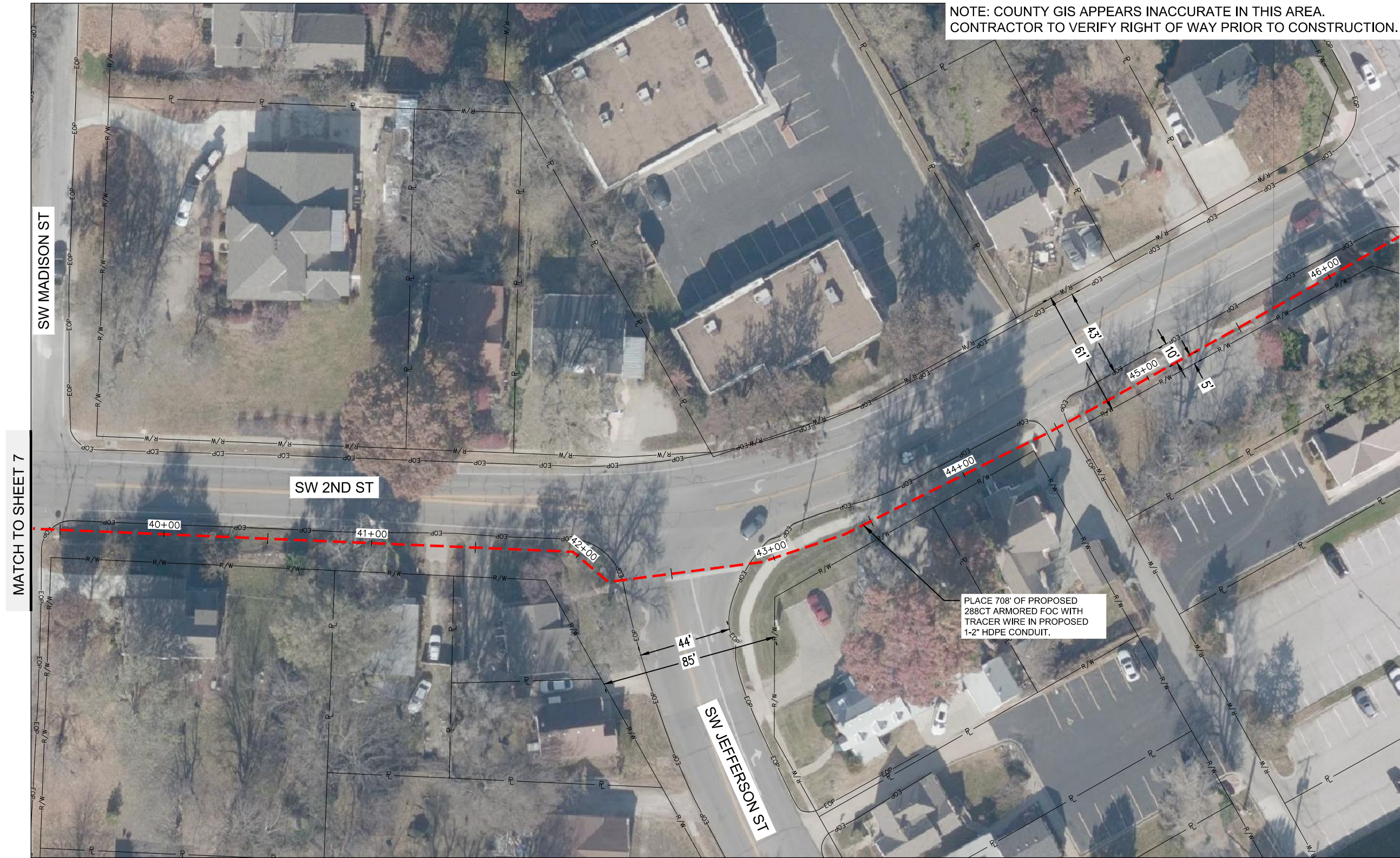
LEES SUMMIT, MO

2022

drawn by: JAR	checked by: APV	approved by: CJL	project no.: 36394
date: 8/15/2022	UPN-78	drawing no.:	

SHEET
7 OF 13

DWG: C:\Temp\AcPublish\21400\UPN-78_207 SE Douglas St_Plans.dwg
 DATE: Aug 15, 2022 9:28am
 USER: jreckman
 XREFS: UPN-78_207 SE Douglas St_Base



NOTE: COUNTY GIS APPEARS INACCURATE IN THIS AREA.
 CONTRACTOR TO VERIFY RIGHT OF WAY PRIOR TO CONSTRUCTION.

MATCH TO SHEET 7

MATCH TO SHEET 9

E22196M1 207 SE DOUGLAS ST LSMO



olsson
 7301 West 133rd Street, Suite 200
 Overland Park, KS 66213-4750
 TEL 913.351.1170
 FAX 913.351.1174
 www.olson.com



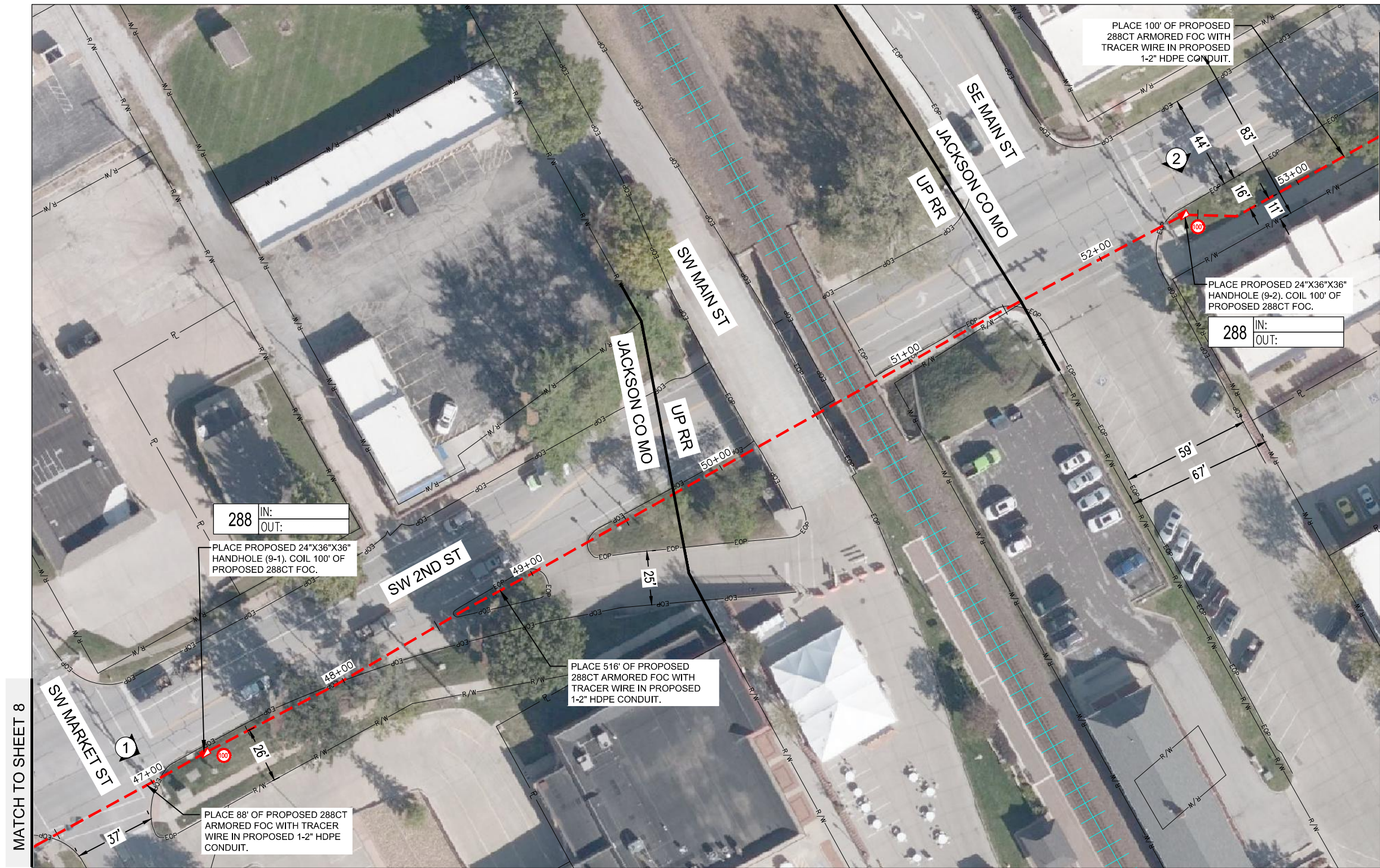
PE Stamp & Approval

REV. NO.	DATE	REVISIONS DESCRIPTION

PROJECT SHEET	REVISIONS
207 SE DOUGLAS ST	
LEES SUMMIT, MO	
	2022

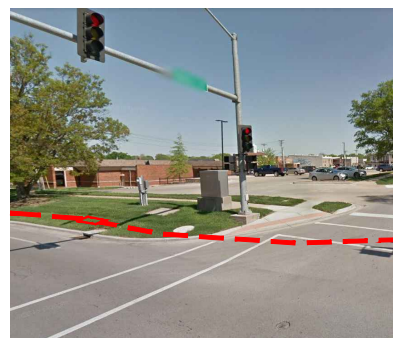
drawn by: JAR
 checked by: APV
 approved by: CJL
 project no.: 36394
 drawing no.: UPN-78
 date: 8/15/2022

DWG: C:\Temp\AcPublish_21400\UPN-78_207 SE Douglas St_Plans.dwg
 DATE: Aug 15, 2022 9:28am
 USER: jreckman
 XREFS: UPN-78_207 SE Douglas St_Base

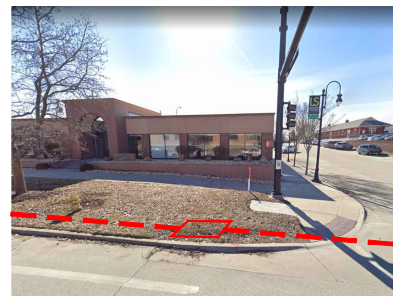


MATCH TO SHEET 8

MATCH TO SHEET 10

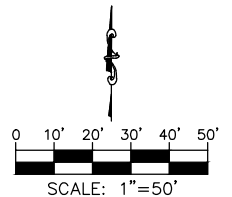


PROPOSED PATH 1



PROPOSED HANDHOLE 2

E22196M1 207 SE DOUGLAS ST LSMO



PE Stamp & Approval

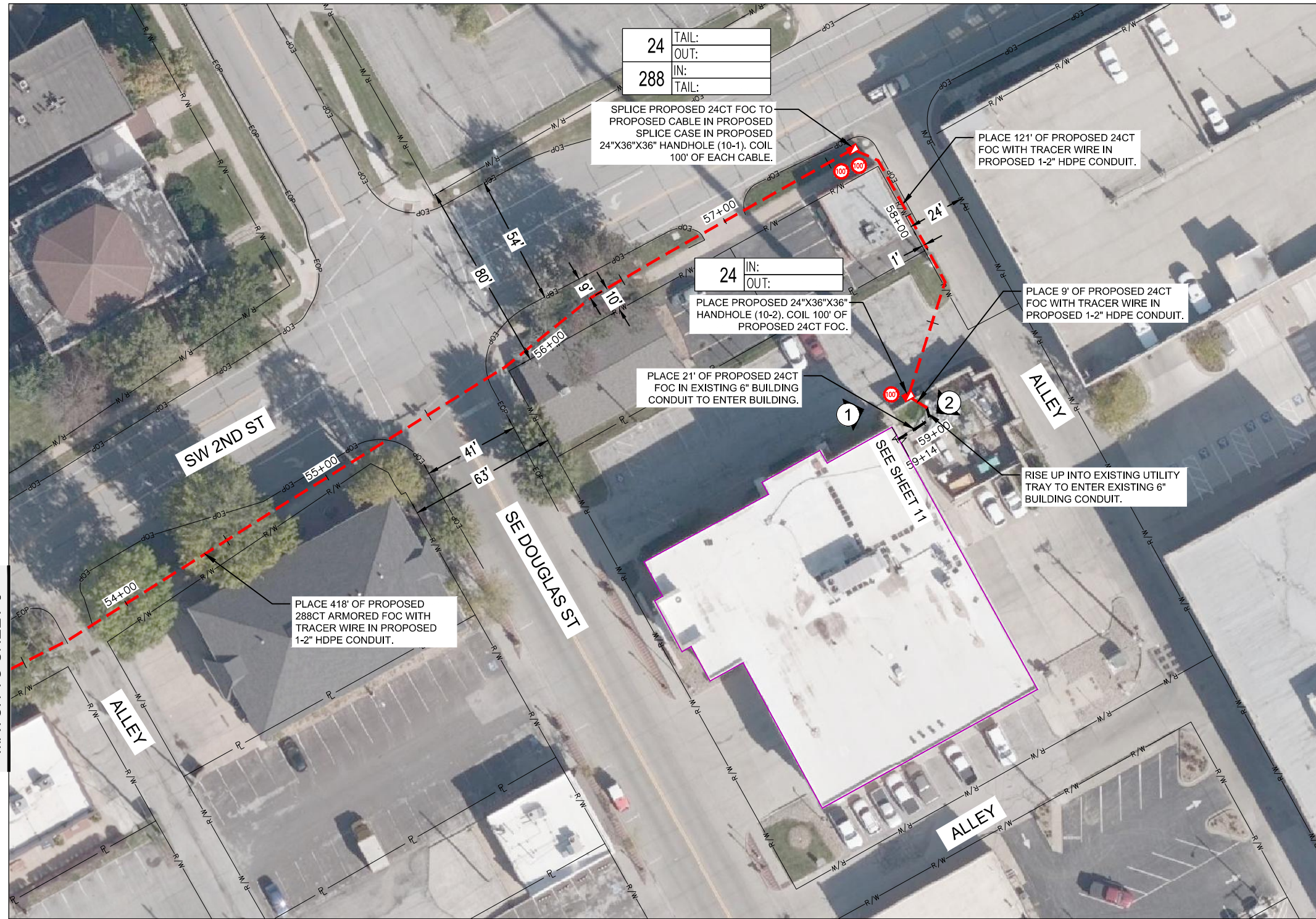
REV. NO.	DATE	REVISIONS DESCRIPTION

PROJECT SHEET	2022
207 SE DOUGLAS ST	
LEES SUMMIT, MO	

drawn by:	JAR
checked by:	APV
approved by:	CJB
project no.:	36394
drawing no.:	UPN-78
date:	8/15/2022

DWG: \\oa.ad.oaconsulting.com\ints-ns1\projects\projects\013-2392-C\40-Design\AutoCAD\Final Plans\UPN-78_207 SE Douglas St_Plans.dwg
 DATE: Aug 15, 2022 10:15am XREFS: UPN-78_207 SE Douglas St_Base USER: jreckman

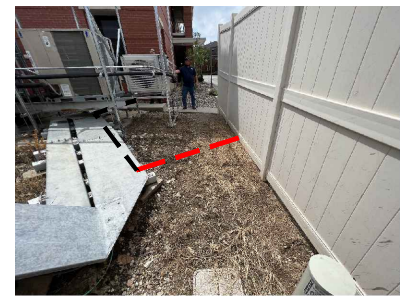
MATCH TO SHEET 9



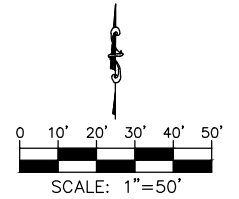
E22196M1 207 SE DOUGLAS ST LSMO



PROPOSED PATH 1



PROPOSED PATH 2



olsson

7301 West 133rd Street, Suite 200
 Overland Park, KS 66213-4750
 TEL: 913.351.1170
 FAX: 913.351.1174
 www.olsson.com



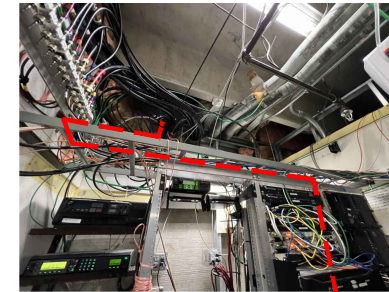
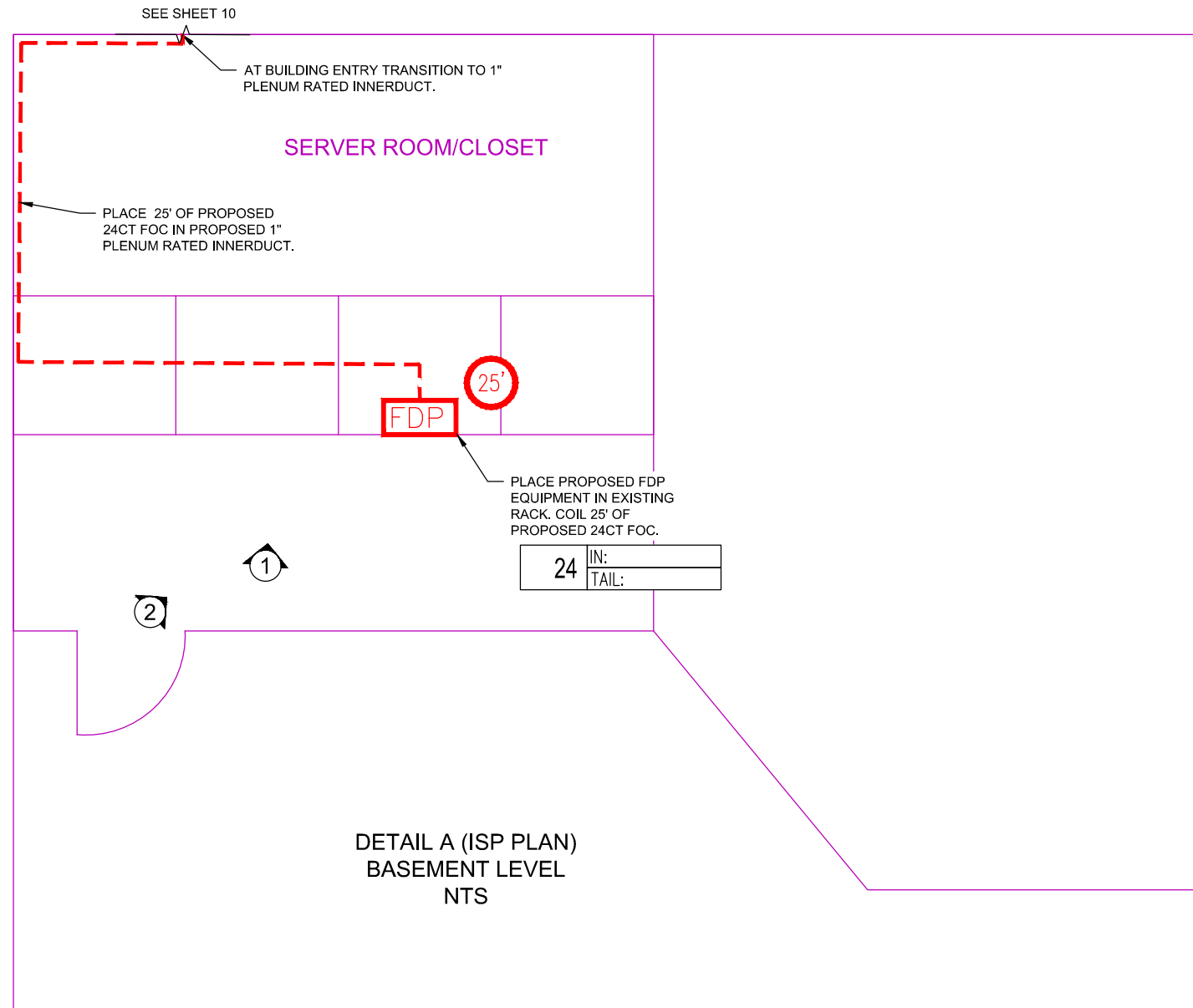
PE Stamp & Approval

REV. NO.	DATE	REVISIONS DESCRIPTION

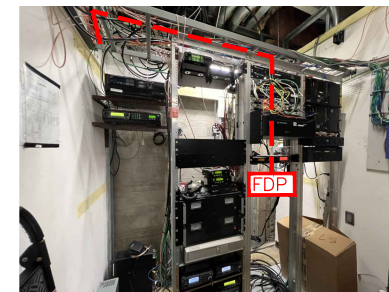
PROJECT SHEET	2022
207 SE DOUGLAS ST	
LEES SUMMIT, MO	

drawn by:	JAR
checked by:	APV
approved by:	CJS
project no.:	36394
drawing no.:	UPN-78
date:	8/15/2022

DETAILS



PROPOSED PATH 1



PROPOSED FDP LOCATION 2

E22196M1 207 SE DOUGLAS ST LSMO



PE Stamp & Approval

REV. NO.	DATE	REVISIONS DESCRIPTION	REVISIONS

DETAIL SHEET	2022
207 SE DOUGLAS ST	
LEES SUMMIT, MO	

drawn by: JAR
checked by: AFV
approved by: CJB
project no.: 36394
drawing no.: UPN-78
date: 8/15/2022

DWG: C:\Temp\AcPublish_21400\UPN-78_207 SE Douglas St_Plans.dwg USER: jreckman
DATE: Aug 15, 2022 9:28am XREFS: UPN-78_207 SE Douglas St_Base



[Handwritten signature]

TYPICALS

PCA243636-00006
PCX POLYMER CONCRETE ASSEMBLY

24" x 36" x 36"
(For actual dimensions see drawing)


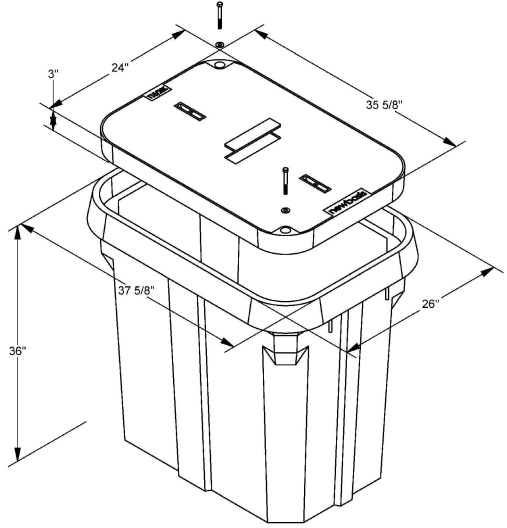
Polymer Concrete Assembly, Straight Sides, No Floor, WUC 3.6, ANSI/SCTE 77 - "T15/20K," 3/8" Hex Bolts, Standard Nameplate (Specify at time of order) Installed

LOAD RATINGS
Incidental Traffic - Parking Lot, Sidewalk
Conforms to:
• WUC 3.6
• ASTM C 857
• ANSI/SCTE 77

FEATURES:
• Drop-in nameplate
• Shipped assembled
• Skid resistant cover
• Stainless steel bolts
• Cast-in floating nut box
• Integral drain holes

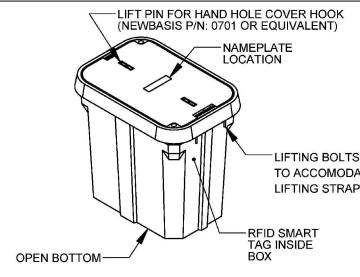
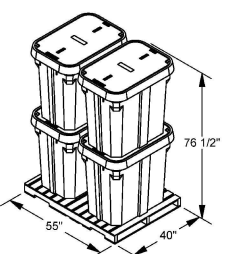
Additional product information continued on the reverse

newbasis
Composites for Infrastructure
2626 Kansas Avenue
Riverside, California 92507
951.787.0600
951.787.0632 (fax)
info@newbasis.com
newbasis.com

Inside Dimensions		
Length	Width	Depth
33 9/16"	21 15/16"	33"
27 1/8"	15 1/2"	

Rev: C.0

<p>PCA243636-00006 PCX POLYMER CONCRETE ASSEMBLY</p>		
<p>Polymer Concrete Assembly, Straight Sides, No Floor, WUC 3.6, ANSI/SCTE 77 - "T15/20K," 3/8" Hex Bolts, Standard Nameplate (Specify at time of order) Installed</p>		
<p>24" x 36" x 36" For actual dimensions, see drawing on front side.</p>		
<p>AVAILABLE OPTIONS</p> <p><input type="checkbox"/> Tier 22 Load Rating <input type="checkbox"/> Penta Bolts <input type="checkbox"/> Telephone EMS <input type="checkbox"/> Power EMS <input type="checkbox"/> Custom Nameplate Installed <input type="checkbox"/> Custom Nameplate Shipped Separately <input checked="" type="checkbox"/> Standard Nameplate Installed <input type="checkbox"/> Standard Nameplate Shipped Separately</p> <p><small><input checked="" type="checkbox"/> - Indicates a selected option</small></p>	<p>NAMEPLATES One standard nameplate included with each assembly, installed at the factory or easily installed in the field. Custom nameplates are available. Contact customer service.</p> <p>Standard Nameplates</p> <ul style="list-style-type: none"> • Electric • Telephone • Fiber Optic • Water • Street Lighting • Broadband • Traffic • CATV • Traffic Signal • Communications 	
<p>MATERIAL PROPERTIES AND ATTRIBUTES</p> <p>Compressive Strength Polymer Concrete - 11500 PSI Per ASTM D695</p> <p>Flexural Strength Polymer Concrete - 4000 PSI Per ASTM D790</p> <p>Coefficient of Friction (Dry) 1.085 Per ASTM C1028</p> <p>Polymer Concrete - Advanced composite: Very high strength to weight ratio - Non-metallic - Non-conductive - UV Resistant - High impact resistant - Impervious to chemicals and moisture</p> <p>Materials tested in accordance with ASTM D-543 and ASTM D-570</p>	<p>WEIGHTS AND SHIPPING</p> <p>COVER WEIGHT: 98.0 lbs. BOX WEIGHT: 239.9 lbs. ASSEMBLY WEIGHT: 337.9 lbs. LOADED PALLET WEIGHT: 1394 lbs.</p> <p>Standard shipping includes van delivery of pallet quantities to the lower 48 states. Partial pallet quantities and flat bed shipping available at an additional cost.</p>	<p>PACKAGING (Steel Banding, Edge Protection)</p> <p>PALLET QUANTITY: 4</p>  <p style="text-align: right; font-size: small;">Rev: C.0</p>

PE Stamp & Approval

REV. NO.	DATE	REVISIONS DESCRIPTION	REVISIONS

TYPICAL DETAILS

207 SE DOUGLAS ST

LEES SUMMIT, MO

2022

drawn by: JAR
 checked by: AFV
 approved by: CJL
 project no.: 36394
 drawing no.: UPN-78
 date: 8/15/2022

DWG: C:\Temp\AcPublish\21400\UPN-78_207 SE Douglas St_Plans.dwg
 DATE: Aug 15, 2022 9:28am
 USER: jreckman
 XREFS: UPN-78_207 SE Douglas St_Base

TOTAL QUANTITIES			
ITEM	ITEM DESCRIPTION	UNITS	QUANTITY
1.	ROD & PROOF EXISTING DUCT	LF	347
2.	SUPPLY & INSTALL 1-2" HDPE DUCT	LF	5567
3.	SUPPLY & INSTALL 2-2" HDPE DUCT	LF	
4.	SUPPLY & INSTALL 1-1.25" HDPE DUCT	LF	
5.	SUPPLY & INSTALL 2" PVC DUCT	LF	
6.	SUPPLY & INSTALL 4" PVC DUCT	LF	
7.	SUPPLY & INSTALL 2" RIGID STEEL ON A STRUCTURE	LF	
8.	SUPPLY & INSTALL 3-CELL MAXCELL	LF	
9.	SUPPLY & INSTALL TRACER WIRE	LF	5567
10.	SUPPLY & INSTALL 24"X36"X36" HANDHOLE	EACH	10
11.	SUPPLY & INSTALL UNDERGROUND SPLICE ENCLOSURE	EACH	1
12.	INSTALL 432CT ARMORED FIBER OPTIC CABLE - UNDERGROUND	LF	
13.	INSTALL 288CT ARMORED FIBER OPTIC CABLE - UNDERGROUND	LF	6863
14.	INSTALL 96CT ARMORED FIBER OPTIC CABLE - UNDERGROUND	LF	
15.	LASH 432CT ARMORED FIBER OPTIC CABLE - AERIAL	LF	
16.	LASH 288CT ARMORED FIBER OPTIC CABLE - AERIAL	LF	
17.	LASH 96CT ARMORED FIBER OPTIC CABLE - AERIAL	LF	
18.	SUPPLY & INSTALL 6.6M STRAND	LF	
19.	SUPPLY & INSTALL FIBER SNOWSHOE	EACH	
20.	SUPPLY & INSTALL 2" PVC STAND OFF RISER	EACH	
21.	SUPPLY & INSTALL 4" PVC STAND OFF RISER	EACH	
22.	SUPPLY & INSTALL DOWN GUY AND ANCHOR	EACH	
23.	SUPPLY & INSTALL AERIAL SPLICE ENCLOSURE	EACH	
24.	SUPPLY & INSTALL 1" EMT CONDUIT	LF	
25.	SUPPLY & INSTALL 2" EMT CONDUIT	LF	
26.	SUPPLY & INSTALL 1" PLENUM RATED INNERDUCT	LF	25
27.	SUPPLY & INSTALL WYE CAST CONNECTOR	EACH	
28.	SUPPLY & INSTALL LB	EACH	
29.	PROPOSED WALL CORE	EACH	
30.	INSTALL 24CT INDOOR/OUTDOOR RATED FIBER OPTIC CABLE - UNDERGROUND	LF	401
31.	INSTALL 24CT INDOOR/OUTDOOR RATED FIBER OPTIC CABLE - AERIAL	LF	
32.	REMOVE & REPLACE SIDEWALK	SQ FT	
33.	REMOVE & REPLACE ASPHALT	SQ FT	
* 34.	TRAFFIC PERMIT	AGENCIES	1
* 35.	RIGHT OF WAY PERMIT	AGENCIES	1

* CITY, COUNTY, AND STATE.

E22196M1 207 SE DOUGLAS ST LSMO



7301 West 133rd Street, Suite 200 Overland Park, KS 66213-4750 TEL 913.381.1170 FAX 913.381.1174 www.olsson.com



Know what's below. Call before you dig.



7301 West 133rd Street, Suite 200 Overland Park, KS 66213-4750 TEL 913.381.1170 FAX 913.381.1174 www.olsson.com



PE Stamp & Approval

REV. NO.	DATE	REVISIONS DESCRIPTION

FINAL QUANTITIES
 207 SE DOUGLAS ST
 LEES SUMMIT, MO
 2022

drawn by: JAR
 checked by: AFV
 approved by: CJL
 project no.: 36394
 drawing no.: UPN-78
 date: 8/15/2022