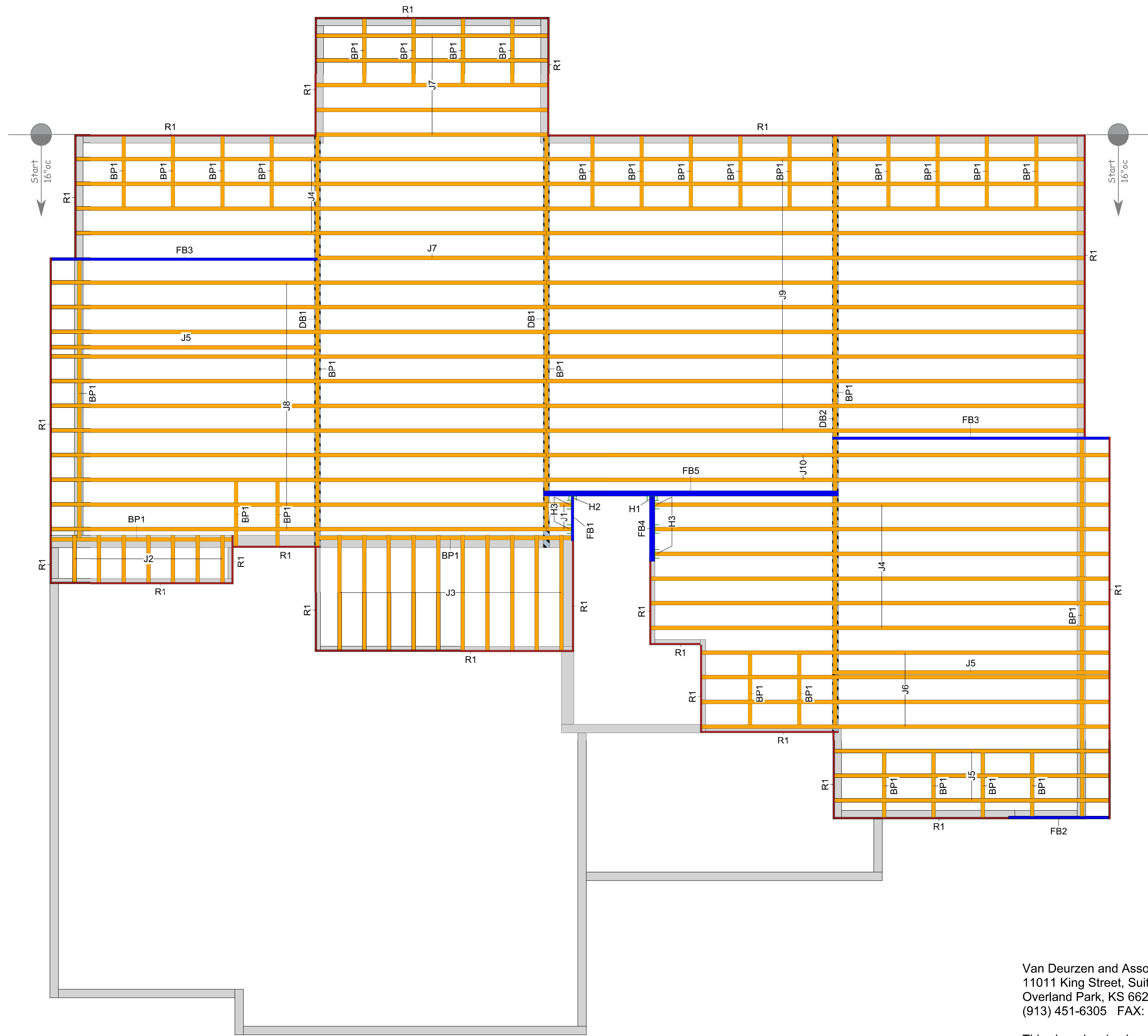


Layout Name
22-04499 Gunnison Modern - Lot 41
Ground Floor



RELEASE FOR CONSTRUCTION
AS NOTED FOR PLAN REVIEW
DEVELOPMENT SERVICES
LEE'S SUMMIT, MISSOURI
08/26/2022

Legend	
	Wall
	onCENTER Rim Board SE 1.125 X 9.5
	BLI 40 9.5
	onCENTER 2.0E LVL 1.75 X 9.5

- GENERAL NOTES:**
- 1.) See Attached Installation Guide
 - 2.) Care should be taken when setting i-joists to avoid plumbing drops and mechanical chases. (DO NOT CUT OR DRILL THROUGH I-JOISTS FLANGES)
 - 3.) All walls, headers and beams are to be adequately designed and supplied by others to support all loads applied to them
 - 4.) (Dealer) recommends gluing and nailing floor sheathing to i-joists
 - 5.) I-joist spacing is not to exceed spacing shown on placement plan.
 - 6.) All headers are assumed dropped below i-joist framing unless noted otherwise.
 - 7.) Solid blocking down to foundation is to be provided by others at all headers, beams and girder bearing points.
 - 8.) Provisions must be made by others to avoid excessive moisture content in lumber. Engineered wood products shall not be placed in any environment that will cause the moisture content of the wood to exceed 19%.
 - 9.) Construction loads such as stacking of drywall, plywood, shingles, masonry materials, mechanical equipment, etc. in any one concentrated area on i-joists is strictly prohibited. I-joists are not designed for these types of conditions.

- Additional Notes**
1. THIS PLACEMENT PLAN IS TO BE REVIEWED AND APPROVED BY THE ARCHITECT/ENGINEER OF RECORD PRIOR TO INSTALLATION OF EWP PRODUCTS
 2. BLUELINX CAN'T BE LIABLE FOR CHANGES MADE TO THIS PLAN WITHOUT WRITTEN APPROVAL

Layout Scale 1/4" = 1'

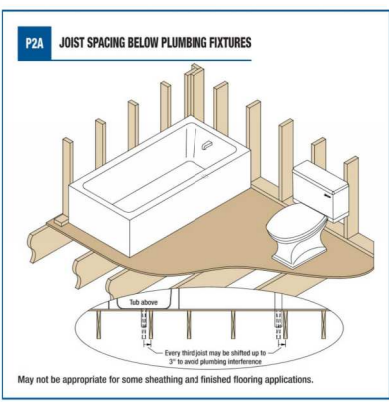
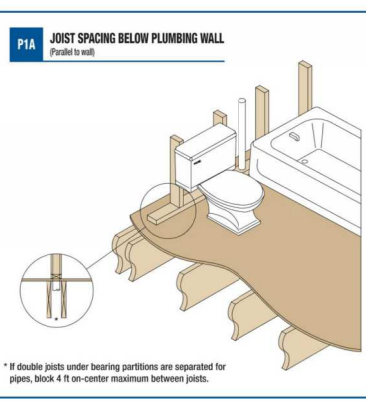
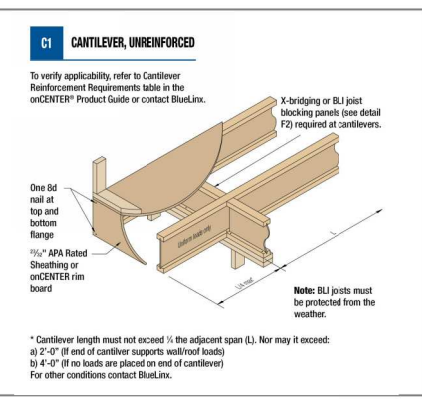
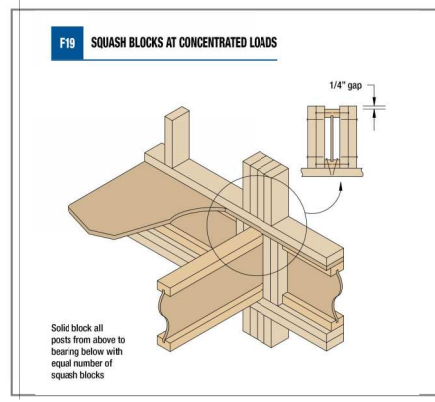
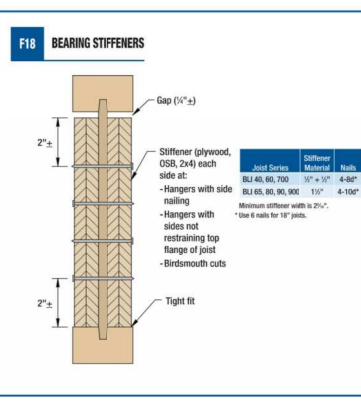
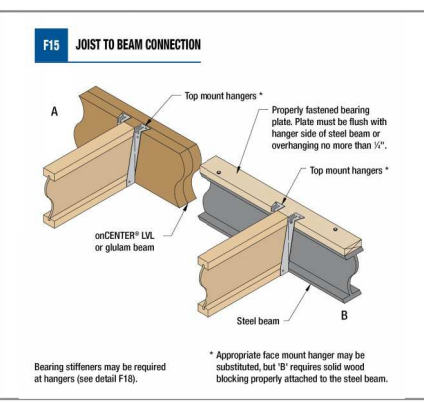
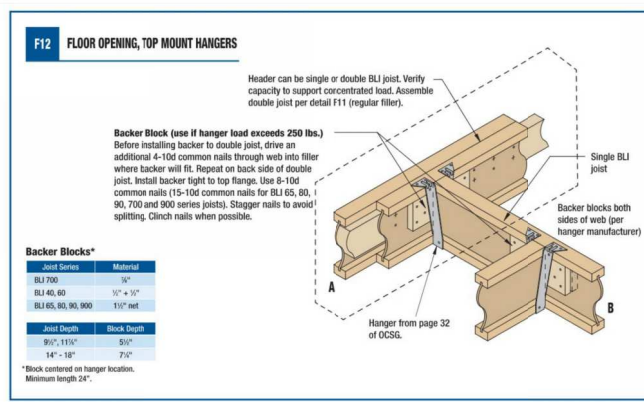
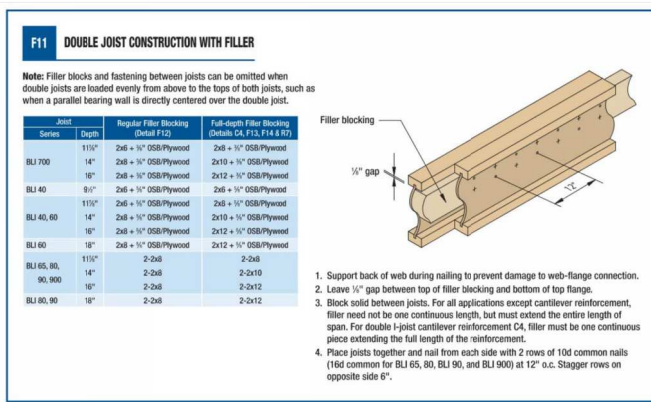
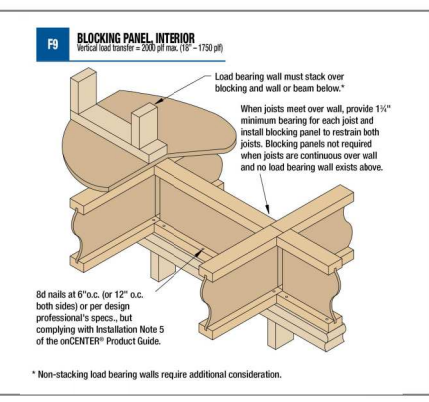
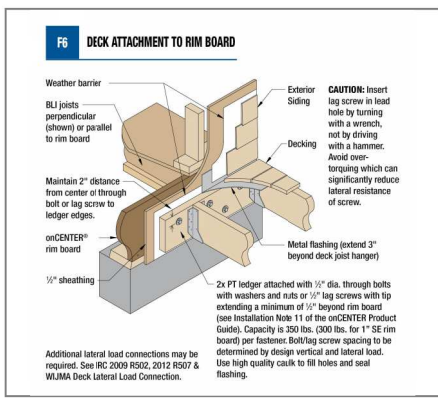
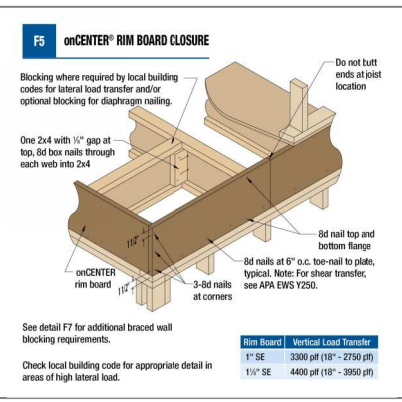
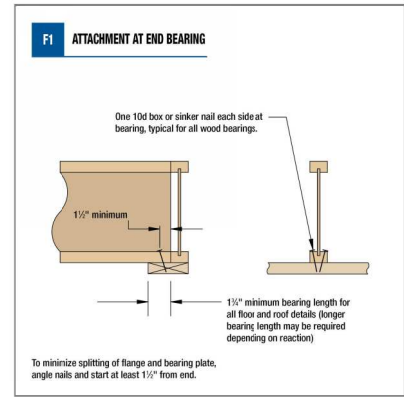
Ground Floor I Joist							
Label	Description	Width	Depth	Qty	Plies	Pcs	Length
J10	BLI 40	2.5	9.5			2	32-0-0
J9	BLI 40	2.5	9.5			12	30-0-0
J8	BLI 40	2.5	9.5			11	28-0-0
J4	BLI 40	2.5	9.5			10	26-0-0
J6	BLI 40	2.5	9.5			4	22-0-0
J5	BLI 40	2.5	9.5			5	16-0-0
J7	BLI 40	2.5	9.5			6	14-0-0
J3	BLI 40	2.5	9.5			10	8-0-0
J2	BLI 40	2.5	9.5			7	4-0-0
J1	BLI 40	2.5	9.5			2	2-0-0
Blocking							
Label	Description	Width	Depth	Qty	Plies	Pcs	Length
BP1	BLI 40	2.5	9.5	LinFt		Varies	194-0-0
LVL/LSL							
Label	Description	Width	Depth	Qty	Plies	Pcs	Length
FB3	onCENTER 2.0E LVL	1.75	9.5			2	16-0-0
FB5	onCENTER 2.0E LVL	1.75	9.5	1	2	2	16-0-0
FB2	onCENTER 2.0E LVL	1.75	9.5			1	6-0-0
FB4	onCENTER 2.0E LVL	1.75	9.5	1	2	2	4-0-0
FB1	onCENTER 2.0E LVL	1.75	9.5			1	4-0-0
Rim Board							
Label	Description	Width	Depth	Qty	Plies	Pcs	Length
R1	onCENTER Rim Board SE 1.125 X 9.5	1.125	9.5			18	12-0-0
Hanger							
Label	Pcs	Description	Skew		Slope		
H1	1	HHUS410					
H2	1	HU9 (Min)					
H3	5	IUS2.56/9.5 (Min)					
Beam By Others							
Label	Description	Width	Depth	Qty	Plies	Pcs	Length
DB2	[Beam per Blueprint]					1	34-0-0
DB1	[Beam per Blueprint]					2	24-0-0

Van Deurzen and Associates, P.A.
11011 King Street, Suite 130
Overland Park, KS 66210
(913) 451-6305 FAX: (913) 451-1021

This shop drawing has been reviewed for conformance with the design concept and information given in the Contract Documents.

☒ Reviewed with no exceptions noted.
☐ Reviewed as noted.
☐ Returned for correction.
☐ Not Reviewed.

By: CMS Date: 08/26/2022



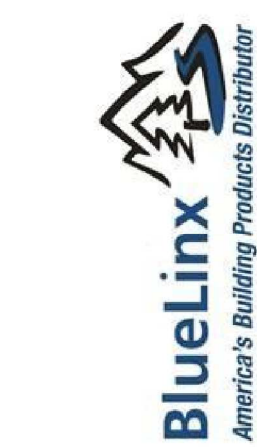
Ground Floor

Design Method ASD (USA)
Building Code IRC 2018

Floor

Loads	
Live	40
Dead	15
Deflection Joist	
LL Span L/	480
TL Span L/	240
Deflection Flush Girder	
LL Span L/	480
TL Span L/	240
Deflection Dropped Girder	
LL Span L/	380
TL Span L/	240
Deflection Header	
LL Span L/	480
TL Span L/	240
Decking	
OSB	
23/32 APA Rated Studs	

SHEET
1 OF 1



BlueLinx Corporation

1727 Warren St.
North Kansas City, MO. 64116
Phone: (816) 842-3367

VISIT US ON THE WEB AT: <https://bluelinxco.com>

Project
22-04499

Dealer
84 Lumber
Layout Name
22-04499 Gunnison Modern - Lot 41

Shipping
1601 SW 27th St. Lee's Summit, MO.
Created
April 27, 2022

Revised
April 27, 2022
Designer
Scott Van Cleave