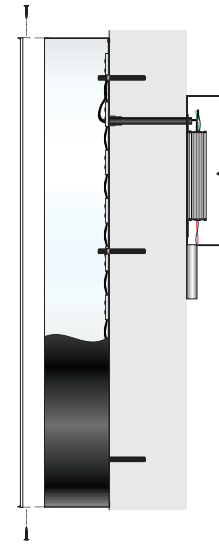
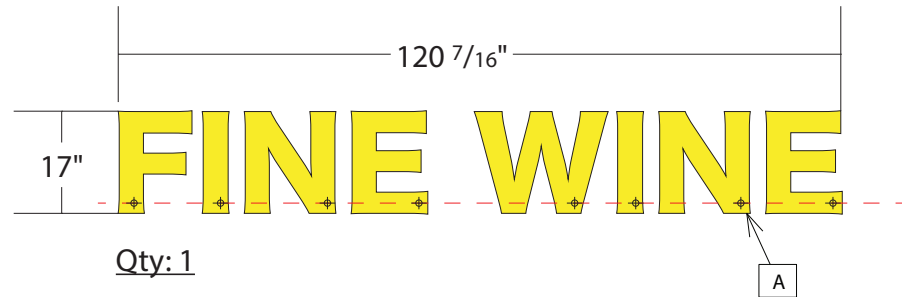
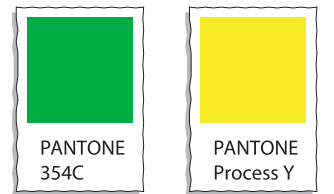


Qty: 1

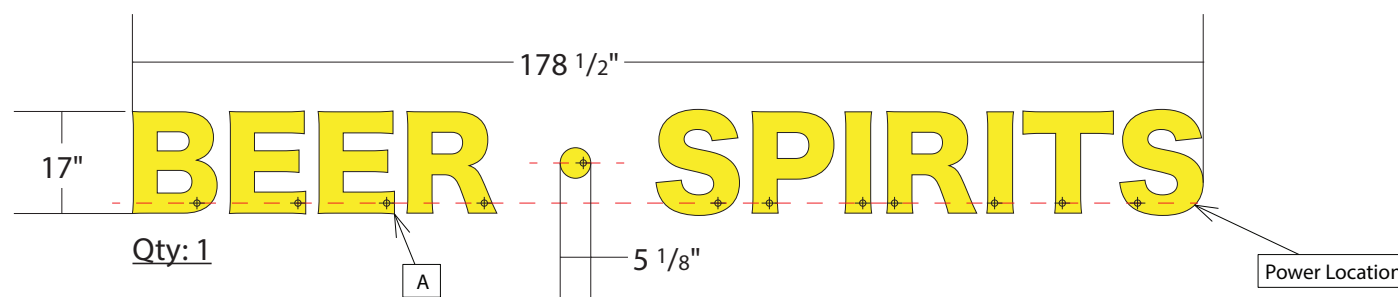


- A
- Standard Front Illuminated Letters
- 3/16" Yellow Acrylic Faces (Letters)
- 3/16" White Acrylic Faces (Clover)
- Green Translucent Overlay (Clover)
- 4" Deep Returns (Black)
- 1" Trim cap (Black)
- White Aluminum Backers
- Direct Mounted for Install
- Paper Pattern for install

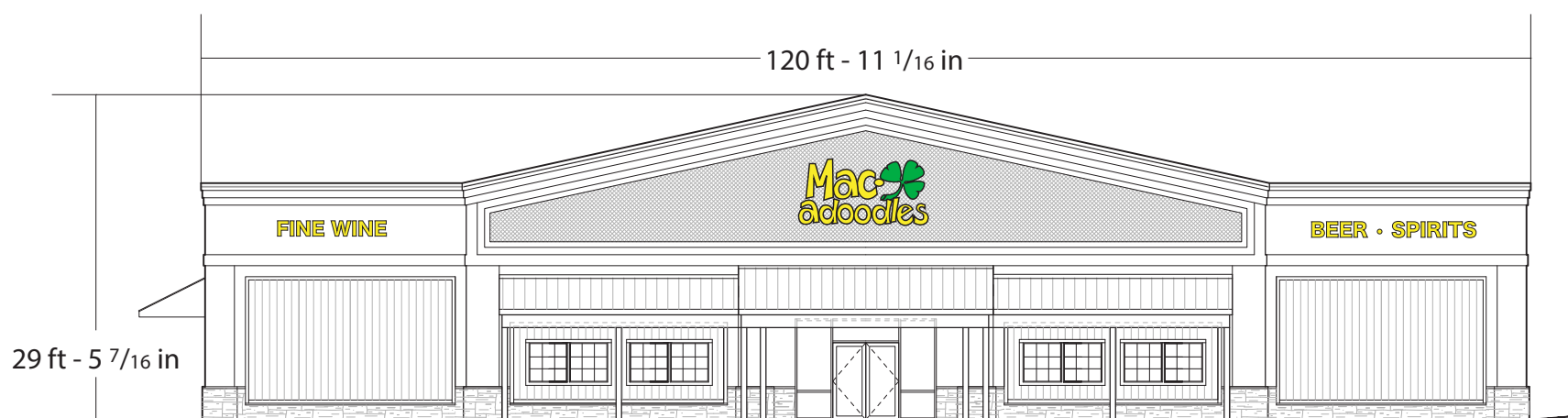
- 1
- Green Vinyl Overlay
- PMS# 354c



Qty: 1



Qty: 1



1 EAST ELEVATION
1/16"=1'-0"



Manufacture notes:
Power Location Located for GC
to Pre-Pull Low Voltage Wire Before Installation.

All Signs Are UL Listed

Electrical Requirements:
120v - 20 amp per elevation

Date: Aug 16, 2022

Client: Macadoodles

Company: Jakob Nilsson

Drawn by: Jeremy Cadero

Salesperson: Dennis Baughman

Page: 1 of 1
o15788

Address:
1499 SW Market St.
Lees Summit, MO

Building Sq. Ft. = 2998.45
Sign Sq. Ft. = Logo = 73.54
FINE WINE = 14.21
BEER.SPIRITS = 21.07
Total Sq. Ft. = 108.82
Signs combined is 3.62% of Building

This drawing remains the exclusive property of Midtown Signs, LLC. It is submitted for your consideration in the purchase of the product(s) manufactured according to these plans. This design cannot be copied in whole or in part, reproduced, altered or exhibited in any manner without the expressed written permission of Midtown Signs, LLC. Exceptions are previously copyrighted artwork supplied by the client.

MIDTOWN
SIGNS
MIDTOWNSIGNS.COM

2416 SOUTH 8TH STREET
KANSAS CITY, KS, USA
816-561-7446
913-766-1470
SALES@MIDTOWNSIGNS.COM

- 1 Revision information: 1
- 2 xxx1
- 3 xxx2
- 4 xxx3