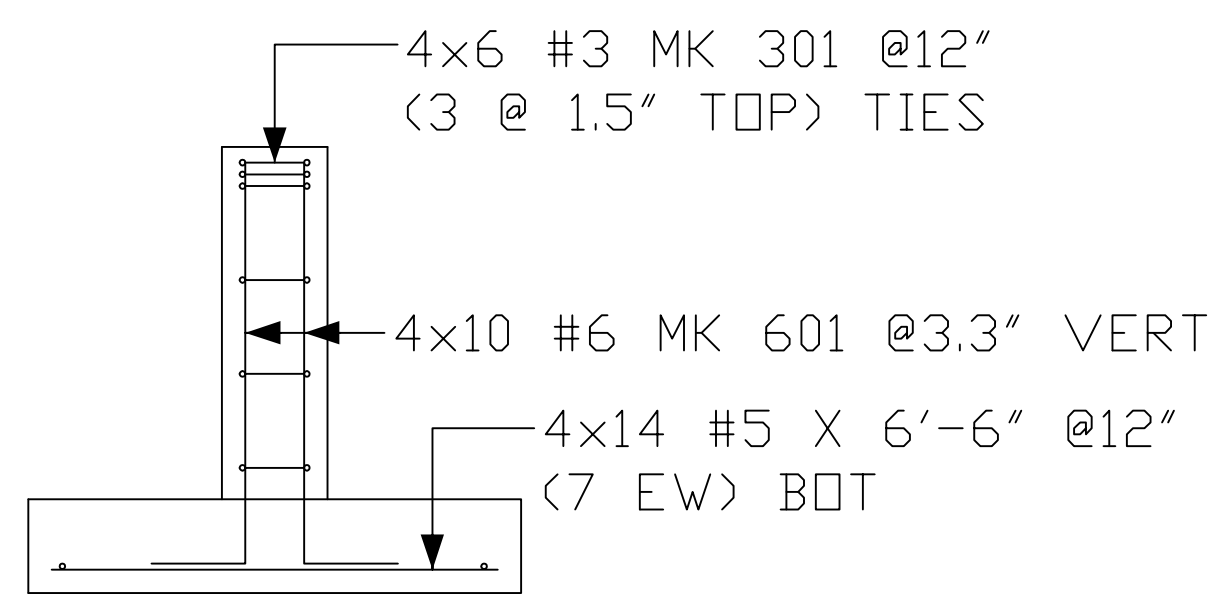
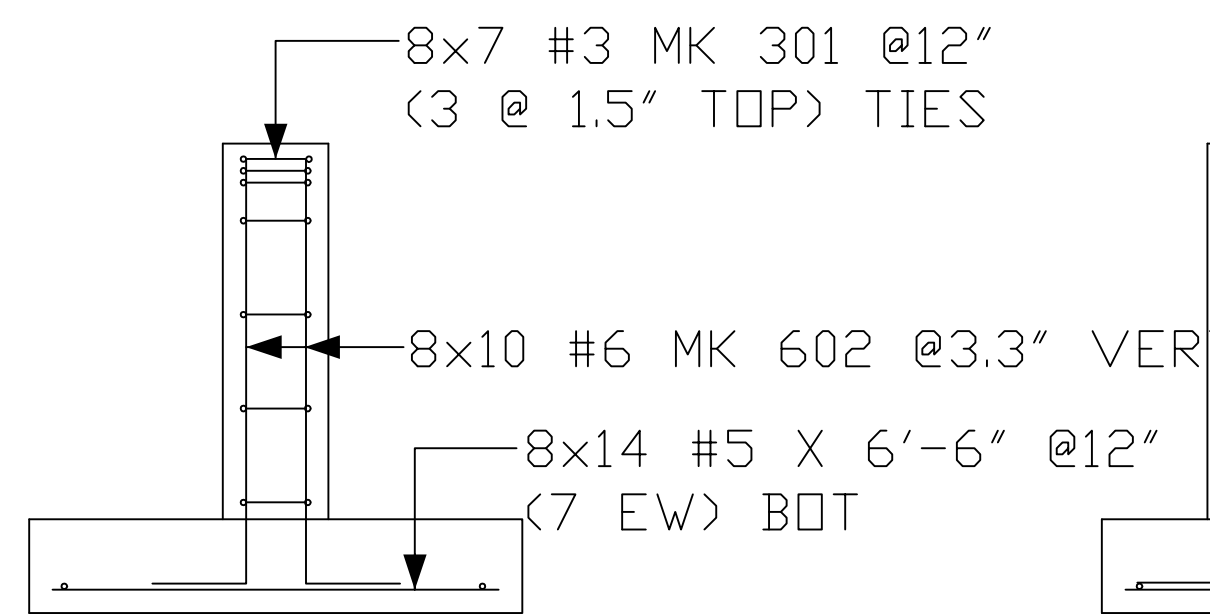


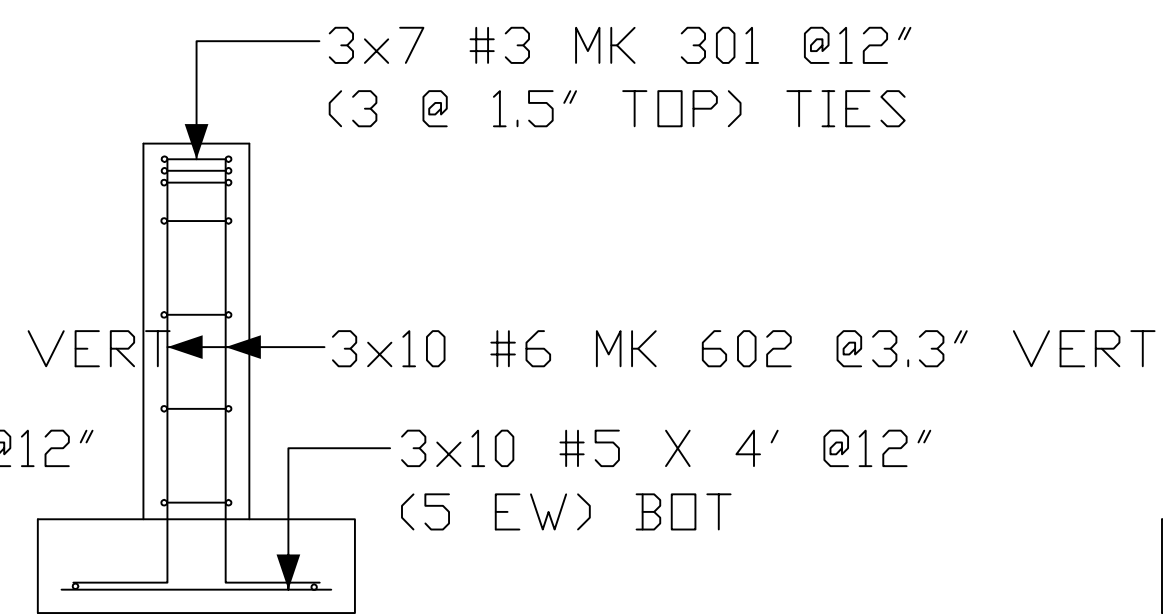
NOTE:  
 REINFORCE S O G WITH  
 4 SHTS 6X6/8X8 WWF  
 LAP 1 SPA + 2"



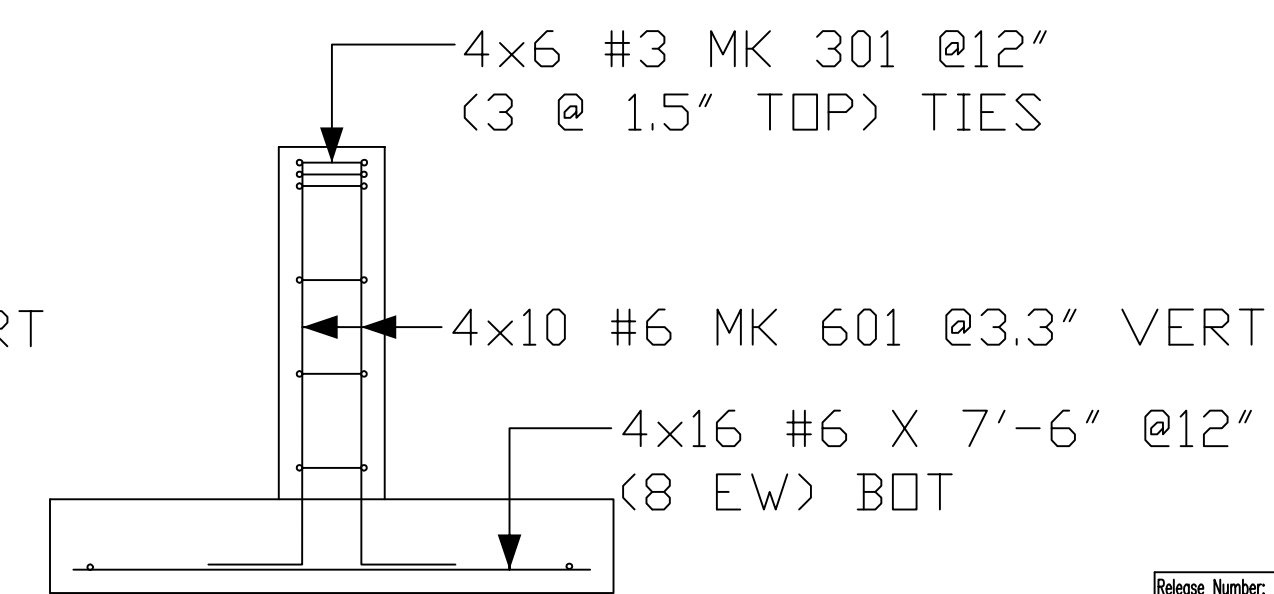
F1 FTG & PIL  
 4 REQ'D



F2 FTG & PIL  
 8 REQ'D

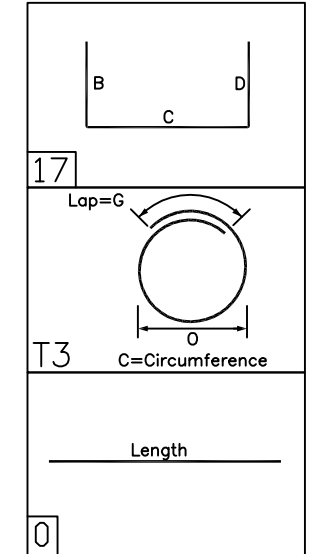


F3 FTG & PIL  
 3 REQ'D



F4 FTG & PIL  
 4 REQ'D

Weight by Release	
Release Numbers	Weight
1	3741.72
<b>Total Weight</b>	<b>3741.72</b>



Release Number: 1		BAR LIST													
Bar No.	Qty	Size	Total Length	Type	X	Y	Z	W	V	U	T	S	R	Q	P
601	80	#6	5'-2"	17		1'-0"	4'-2"								
602	110	#6	5'-5"	17		1'-0"	4'-5"								
301	125	#3	5'-1 1/2"	13			3'-1 1/2"								1'-0"
108	15	#5	6'-6"			6'-6"									
30	15	#5	4'-0"			4'-0"									
64	15	#5	7'-6"			7'-6"									

THIS DRAWING TO BE USED FOR PLACING REINFORCING ONLY

**PRECISION DETAILING SERVICES**

Reinforcing Steel, Welded Wire Fabric, Bar Supports  
 304 NE Richardson Place, Lees Summit, Mo. 64086  
 Phone: 816-524-7692 Email: dbolling@twc.com

REVISIONS		PROJECT:
DATE	BY	REMARKS
7/25/22	DB	Initial Submittal
		LOCATION: LEES SUMMIT MO PARAGON STAR
		ARCH/ENGIN: _____
		CONTRACTOR: Epic Concrete Construction, Inc.
		Foundations
DESCRIPTION: Reinforcing Steel		DRAWN BY: DB
		DATE: 7/25/22
		CONTRACT NO: _____
		SHEET NO: R-1