

August 3, 2022

Summit Homes
120 SE 30th St.
Lee's Summit, MO 64082

RE: Field issue of LP panel siding not extending over upper top plate and header for floor joists for Lot #111 Manor at Stoney Creek –4409 SW Grindstone Circle Lee's Summit, MO 64082 – Permit # PRRES20216314

LP Panel Siding not extending to upper top plate:

- LP Panel Siding does not extend to the upper top plate at exterior dining, great room and bedroom #1 surrounding covered deck.

Recommended modifications:

At exterior dining wall:

- Install (2) #2 DFL 2x12 continuous header corner to corner flush under double top plate at dining for CS-PF.
- Attach siding with nail pattern as specified in IRC figure below:

At exterior great room and bedroom #1 wall:

- Install 2x4 blocking underneath top plate in stud bays for WSP panels as at great room and bedroom #1.
- Attach siding to blocking with 6" at panel edges nailing pattern.
- Attach double top plate to blocking with 4" long screws.

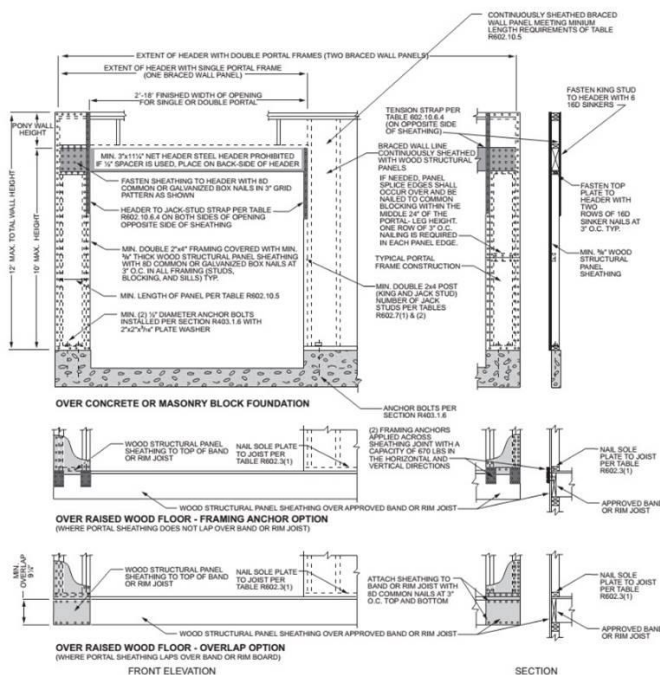
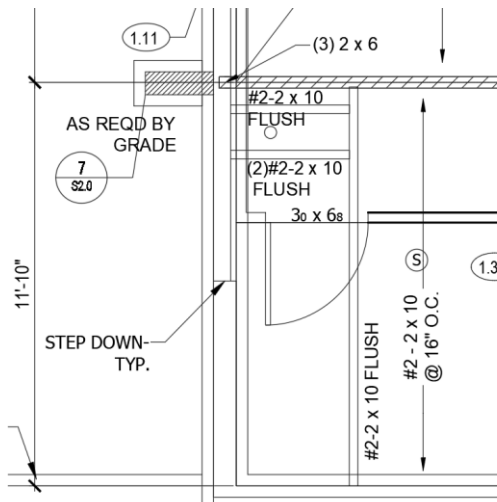


FIGURE R602.10.6.4 METHOD CS-PF—CONTINUOUSLY SHEATHED PORTAL FRAME PANEL CONSTRUCTION

Headered floor joist for DWV:

- Floor joist shall be headered for DWV as shown in image below:



Sincerely,

Bradley Huxol, PE

