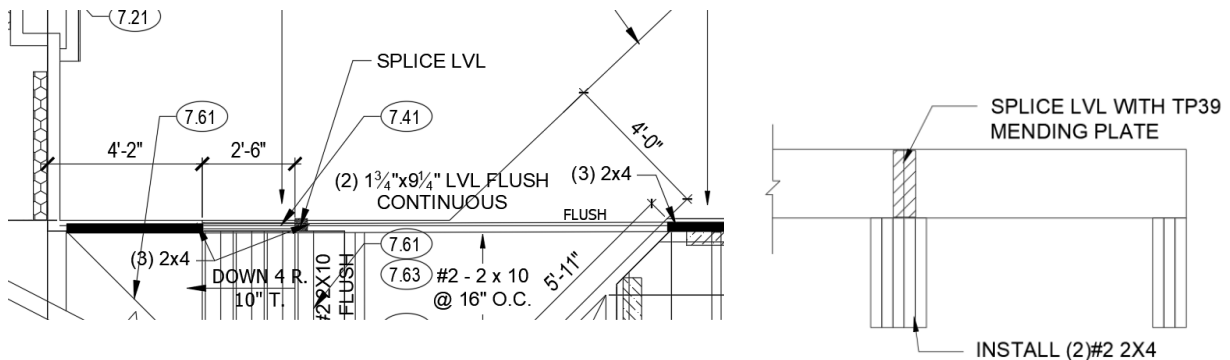


August 9, 2022

Summit Homes  
120 SE 30<sup>th</sup> St.  
Lee's Summit, MO 64082

**RE: Field Issue of split floor joist and revision to second floor framing for Lot #119 Manor at Stoney Creek – 4404 SW Grindstone Circle Lee's Summit, MO 64082 – Permit # PRRES20220402**

- **Great Room/Foyer LVL was installed as continuous.**



**Recommended modifications:**

- Splice LVL after 3 stud pack location as shown in image above.
- Install (2) #2 2x4 DFL studs adjacent existing stud pack for spliced LVL bearing.
- Install TP39 mending plate centered over splice with (41) 0.131"x2.5" nails or #9 Strong Drive SD screws per manufacturer's specs.

- **Split floor joist**

- **Floor joist is split for approx 3' above pantry.**

**Recommended modifications:**

- Remove plumbing and electrical wiring and install 6' length of DFL #2 2x10 over splice.
- Install 4 fasteners per linear ft in a "W" pattern.

Sincerely,



Bradley Huxol, PE

