



August 5, 2022

Mr. David Olson  
Streets of West Pryor, LLC  
7200 W 132<sup>nd</sup> Street, #150  
Overland Park, Kansas 66213

Re: Long-Term Monitoring Plan Survey Points REVISED  
Lots 7A (Area A), 7B (Area C), and 7C (Area B)  
Mine Remediation at Streets of West Pryor  
Lee's Summit, Missouri  
Geotechnology Project No. J035637.02

Dear Mr. Olson,

This letter transmits the revised results of settlement monitoring performed on the portions of the Streets West of Pryor project for July 2022. This report has been updated with corrected information provided by the surveyor as documented on the updated Figure 2. For this monitoring period, monitoring of potential ground movements has been accomplished using a combination of surface monitoring points (SMPs) and survey points established on sanitary and storm sewer inlets and/or manholes. These points continue to be surveyed by BHC, Inc. SMP C106 has since been covered with fill. Therefore, no data was recorded at the location. Additional data points will be added to the monitoring record, as they are collected, and updated results of settlement monitoring will be provided.

Attached to this letter is the updated data for SMPs as shown on the attached Table 1 and graphic plots. Current survey readings were obtained on July 21, 2022 in general accordance with the Long Term Monitoring Plan (LTMP). Table 1 documents the monitoring events to date. Exhibit 1 presents the graphic plots that depict the data obtained in relation to elapsed time. Based on the current construction schedule, it is anticipated that instillation of sleeved rod monuments will commence in the next 30 to 60 days. Preliminary locations are under review for potential conflicts with potential future construction.

As of the current set of data, including the new baseline reading, the monitoring results do not indicate that settlement has exceeded the limits established in the LTMP. Therefore, the planned readings will continue every two months for the duration of surface construction. The following attachments are included for the current results of the LTMP.

Figure 1	-	Monitoring Plan Locations
Figure 2	-	Monitoring Results from BHC
Table 1	-	Monitoring Point Displacement Summary
Exhibit 1	-	Monitoring Point Graphic Plots



\* \* \* \* \*

We appreciate the opportunity to provide geotechnical services for this project. If you have a question regarding this letter, or if we may be of additional service to you, please contact the undersigned.

Respectfully submitted,

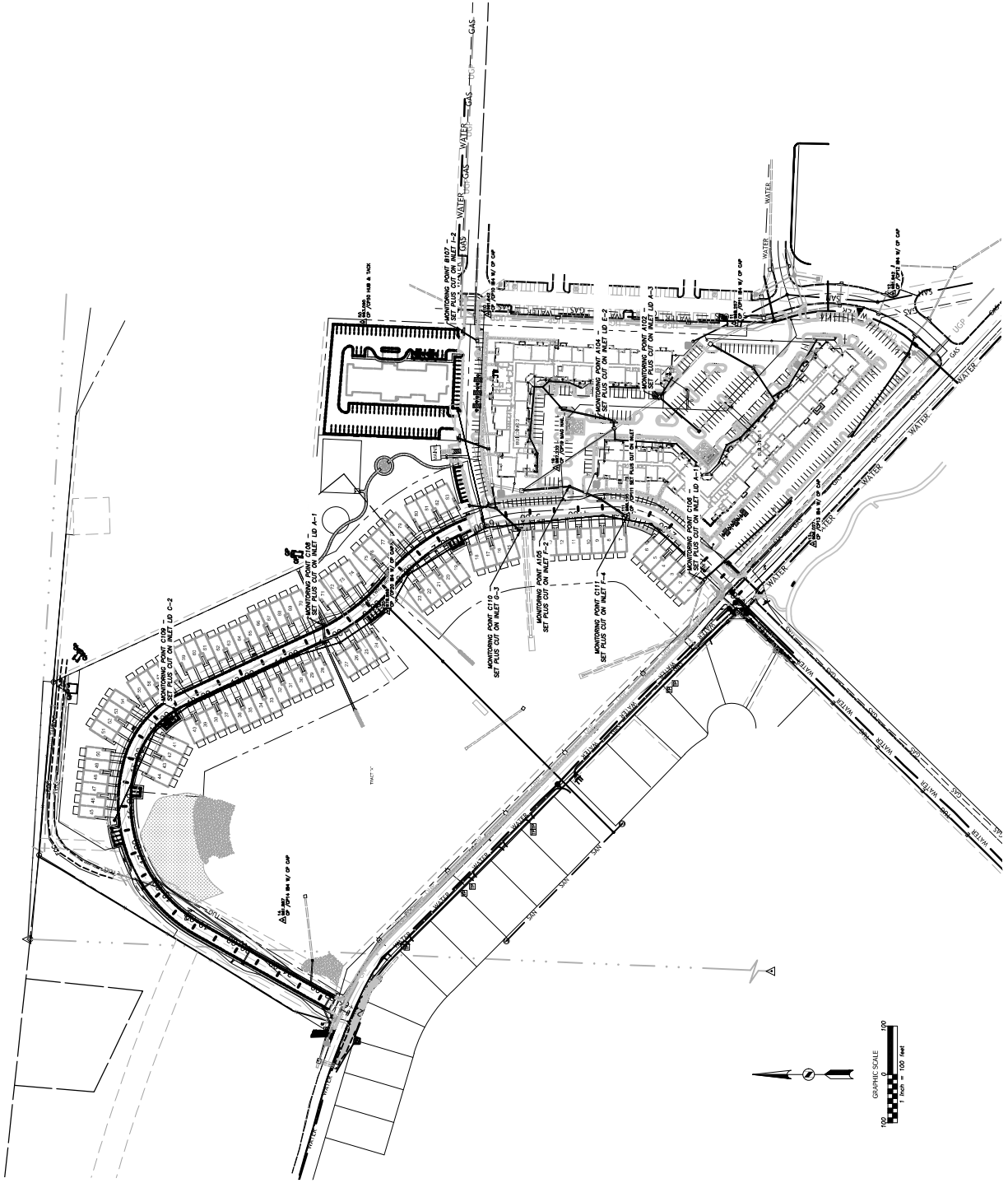
**GEOTECHNOLOGY, LLC**

Tanner N. Merz, E.I.  
Engineer

TNM/ALP



Andrea Prince, P.G.  
Senior Project Manager

[illegible]

Rev.	Date	Description	Drawn	Checked
05/09/2023		First Monitoring Points and Placement of Additional Monitoring		
04/12/2023		Second Monitoring Points and Placement of Additional Monitoring		
12/16/2023		Second Monitoring & Placement of Additional Monitoring Points		

Streets of West Pryor Monitoring Exhibit  
Lots 7A, 7B, and 7C  
Section 35, Township 48, Range 32  
Lee's Summit, Jackson County, Missouri

# Streets of West Pryor Monitoring Spreadsheet

## Initial Monitoring Point Locations Points Set Oct. 12, 2021

## First Monitoring Results Dec. 12, 2021 Note: Differences Below Between Oct. 12, 2021 & Dec. 12, 2021

Point #	Northing	Easting	Elevation	Location	Point #	Northing Difference	Easting Difference	Elevation Difference	Observed Elevation	Location
100	1006796.43	2812899.00	992.88	Inlet	2100	-0.03	0.01	-0.04	992.84	
101	1006763.01	2812554.02	982.86	Inlet B-1	2101	-2.90	-2.00	0.01	982.87	
102	1006414.57	2812733.04	987.35	Inlet A-3	2102	1.55	-5.17	-0.02	987.33	
103	1006322.29	2812351.55	988.07	Inlet A-1	See Note Below					
	Value Greater than 0.08'				104	1006511.50	2812680.58	987.40		Inlet E-2
	Value Greater than 0.04'				105	1006601.94	2812547.13	986.35		Inlet F-2
	Value Greater than 0.02'				106	1006319.59	2812353.76	988.24		Inlet A-1

**Note:** Lid replaced and mark removed on Inlet A-1 after initial monitoring. Point's 104-106 above are new or replacement monitoring points on the site.

Inlet Lids on Structures B-1 and A-3 have been adjusted since the initial monitoring. The new location of points will now be monitored.

**Note:** Point's 10-14 on previous exhibits are Control Point's for monitoring and have been removed to simplify exhibit.

Point's 100-103 are monitoring points as shown on the exhibit.

Monitoring Point #100 is on an Inlet @ NE Corner of Site

Note: The certification on this exhibit is to verify that the horizontal and vertical positions shown hereon were collected under my direct supervision. This certification does not intend to show anything other what is shown on the exhibit. We are not certifying any reason or cause for the differences in the locations or elevations.



Streets of West Pryor Monitoring Spreadsheet

Second Monitoring Results

Feb. 4, 2022

Note: Differences Below Between

Oct. 12, 2021 & Feb. 4, 2022 (Point 100)

Dec. 12, 2021 & Feb. 4, 2022 (Points 101, 102, & 104-106)

Point #	Northing Difference	Easting Difference	Elevation Difference	Observed Elevation	Location	Point #	Northing Difference	Easting Difference	Elevation Difference	Observed Elevation	Location
3100	-0.04	-0.01	0.01	992.89	Inlet	4100	-0.03	-0.01	-0.04	992.84	Inlet
3101	-0.03	-0.06	0.06	982.92	Inlet B-1	4101	-0.01	-0.39	0.01	982.87	Inlet B-1
3102	-0.02	-0.03	0.02	987.37	Inlet A-3	4102	-0.02	-0.01	0.02	987.33	Inlet A-3
3104	0.00	-0.04	0.04	987.44	Inlet E-2	4104	0.01	-0.08	0.00	987.40	Inlet E-2
3105	-0.04	-0.05	0.06	986.41	Inlet F-2	4105	0.00	0.01	0.01	986.36	Inlet F-2
3106	0.02	-0.17	0.04	988.28	Inlet A-1	4106	0.04	-0.10	-0.03	988.21	Inlet A-1

Note: Differences Below Between

Dec. 12, 2021 & Feb. 4, 2022

3100	-0.01	-0.02	0.05	992.89
3101	-0.03	-0.06	0.05	982.92
3102	-0.02	-0.03	0.04	987.37

Note: Differences Below Between

Feb. 4, 2022 & March 2, 2022

4100	0.01	0.00	-0.05	992.84
4101	0.02	-0.33	-0.05	982.87
4102	0.00	0.02	-0.04	987.33
4104	0.01	-0.05	-0.04	987.40
4105	0.05	0.06	-0.05	986.36
4106	0.02	0.06	-0.07	988.21

Note: The certification on this exhibit is to verify that the horizontal and vertical positions shown hereon were collected under my direct supervision. This certification does not intend to show anything other what is shown on the exhibit. We are not certifying any reason or cause for the differences in the locations or elevations.



# Streets of West Pryor Monitoring Spreadsheet

## Fourth Monitoring Results 4/8/2022

Note: Differences Below Between  
Dec. 12, 2021 & April 8, 2022

Point #	Northing Difference	Easting Difference	Elevation Difference	Observed Elevation	Location
Inlet Adjusted- Removed from Monitoring					
5102	-3.35	1.84	1.09	988.44	Inlet A-3
Based on above results, Inlet A-3 has shifted since last monitoring					
5104	0.00	-0.04	0.04	987.44	Inlet E-2
5105	-0.01	-0.02	0.02	986.37	Inlet F-2
5106	0.02	-0.09	0.00	988.24	Inlet A-1
107	1006824.68	2812868.80	990.01		Inlet I-2
108	1007111.59	2812258.87	979.05		Inlet A-1
109	1007411.19	2812081.44	975.28		Inlet C-2
110	1006703.64	2812454.33	984.07		Inlet G-3

Note: Point's 107-110 above are new  
or replacement monitoring points on the site.

## Note: Differences Below Between March 2, 2022 & April 8, 2022

Inlet Adjusted- Removed from Monitoring					
5102	-3.33	1.85	1.11	988.44	
5104	-0.01	0.04	0.04	987.44	
5105	-0.01	-0.02	0.01	986.37	
5106	-0.03	0.02	0.03	988.24	

Note: The certification on this exhibit is to verify that the horizontal  
and vertical positions shown hereon were collected under my  
direct supervision. This certification does not intend to show anything  
other what is shown on the exhibit. We are not certifying  
any reason or cause for the differences in the locations or elevations



# Streets of West Pryor Monitoring Spreadsheet

## Fifth Monitoring Results

5/9/2022

Note: Differences Below Between

Dec. 12, 2021 & May 9, 2022 (Points 104 - 106)

April 8, 2022 & May 9, 2022 (Points 102 & 107 - 110)

Point #	Northing	Easting	Elevation Difference	Observed Elevation	Location
6102	See Note		0.00	988.44	Inlet A-3
6104	See Note		0.01	987.41	Inlet E-2
6105	See Note		0.01	986.36	Inlet F-2
6106	See Note		0.03	988.27	Inlet A-1
6107	See Note		-0.02	989.99	Inlet I-2
6108	See Note		0.03	979.08	Inlet A-1
6109	See Note		0.00	975.28	Inlet C-2
6110	See Note		0.00	984.07	Inlet G-3
111	1006482.19	2812485.01	986.12		Inlet F-4

Note: Point #111 is a new monitoring point.

Note: Differences Below Between

April 8, 2022 & May 9, 2022

6104	-0.03	987.41	Inlet E-2
6105	-0.01	986.36	Inlet F-2
6106	0.03	988.27	Inlet A-1



Note: This monitoring exhibit represents a shift in the data collection method for the monitoring at the Streets of West Pryor site. Long term monitoring will concentrate on the vertical differences between observations, unless otherwise noted.

Note: The certification on this exhibit is to verify the vertical positions shown hereon were collected under my direct supervision. This certification does not intend to show anything other what is shown on the exhibit. We are not certifying any reason or cause for the differences in elevations.

# Streets of West Pryor Monitoring Spreadsheet

## Sixth Monitoring Results 6/8/2022

Note: Differences Below Between

Dec. 12, 2021 & June 8, 2022 (Point's 104-106)

April 8, 2022 & June 8, 2022 (Point's 102, 107-110)

May 9, 2022 & June 8, 2022 (Point #111)

<u>Point #</u>	<u>Northing</u>	<u>Easting</u>	<u>Elevation Difference</u>	<u>Observed Elevation</u>	<u>Location</u>
7102			0.01	988.45	Inlet A-3
7104			0.02	987.42	Inlet E-2
7105			0.02	986.37	Inlet F-2
7106			-0.02	988.26	Inlet A-1
7107			-0.01	990.00	Inlet I-2
7108			0.01	979.06	Inlet A-1
7109			-0.03	975.25	Inlet C-2
7110			-0.02	984.05	Inlet G-3
7111			-0.02	986.10	Inlet F-4

Note: This monitoring exhibit continues a shift in the data collection method for the monitoring at the Streets of West Pryor site. Long term monitoring will concentrate on the vertical differences between observations, unless otherwise noted.



## Note: Differences Below Between May 9, 2022 & June 8, 2022

7102	0.01	988.45
7104	0.01	987.42
7105	0.01	986.37
7106	-0.01	988.26
7107	0.01	990.00
7108	-0.02	979.06
7109	-0.03	975.25
7110	-0.02	984.05
7111	-0.02	986.10

Note: The certification on this exhibit is to verify the vertical positions shown hereon were collected under my direct supervision. This certification does not intend to show anything other what is shown on the exhibit. We are not certifying any reason or cause for the differences in elevations.

# Streets of West Pryor Monitoring Spreadsheet

## Seventh Monitoring Results

7/21/2022

Note: Differences Below Between

Dec. 12, 2021 & July 21, 2022 (Point's 104-106)  
 April 8, 2022 & July 21, 2022 (Point's 102, 107-110)  
 May 9, 2022 & July 21, 2022 (Point #111)

Point #	North	East	Elevation Difference	Observed Elevation	Location
8102			0.03	988.47	Inlet A-3
8104			0.05	987.45	Inlet E-2
8105			0.04	986.39	Inlet F-2
8106		Inlet covered with fill			Inlet A-1
8107			-0.03	989.98	Inlet I-2
8108			0.01	979.06	Inlet A-1
8109			-0.02	975.26	Inlet C-2
8110			-0.05	984.02	Inlet G-3
8111			-0.02	986.10	Inlet F-4

Note: This monitoring exhibit continues a shift in the data collection method for the monitoring at the Streets of West Pryor site. Long term monitoring will concentrate on the vertical differences between observations, unless otherwise noted.



## Note: Differences Below Between June 8, 2022 & July 21, 2022

8102			0.02	988.47	Inlet A-3
8104			-0.03	987.45	Inlet E-2
8105			0.02	986.39	Inlet F-2
8106		Inlet covered with fill			Inlet A-1
8107			-0.02	989.98	Inlet I-2
8108			0.00	979.06	Inlet A-1
8109			0.01	975.26	Inlet C-2
8110			-0.03	984.02	Inlet G-3
8111			0.00	986.10	Inlet F-4

Note: The certification on this exhibit is to verify the vertical positions shown hereon were collected under my direct supervision. This certification does not intend to show anything other what is shown on the exhibit. We are not certifying any reason or cause for the differences in elevations.

**Displacement for A100**

Date	Elevation Change (ft)	Elevation (ft)	Time Elapsed (yr)	Elevation Change (in)	Total Elevation Change (in)	Rate (in/yr)	Remarks
10/12/2021	NA	992.88	NA	NA	NA	NA	
12/12/2021	-0.03	992.84	0.17	-0.48	-0.48	-2.87	
2/4/2022	-0.01	992.89	0.15	0.60	0.12	4.06	
3/2/2022	0.01	992.84	0.07	-0.60	-0.48	-8.42	Inlet point moved, new baseline set
4/8/2022	#N/A	#N/A	#N/A	#N/A	#N/A	#N/A	Monitor point removed due to adjusting inlet

**Displacement for A101**

Date	Elevation Change (ft)	Elevation (ft)	Time Elapsed (yr)	Elevation Change (in)	Total Elevation Change (in)	Rate (in/yr)	Remarks
10/12/2021	NA	982.86	NA	NA	NA	NA	
12/12/2021	0.01	982.87	0.17	0.12	0.12	0.72	Inlet lid adjusted after initial monitoring
2/4/2022	0.05	982.92	0.15	0.60	0.72	4.06	
3/2/2022	-0.05	982.87	0.07	-0.60	0.12	-8.42	Inlet point moved, new baseline set
4/8/2022	#N/A	#N/A	#N/A	#N/A	#N/A	NA	Monitor point removed due to adjusting inlet

**Displacement for A102**

Date	Elevation Change (ft)	Elevation (ft)	Time Elapsed (yr)	Elevation Change (in)	Total Elevation Change (in)	Rate (in/yr)	Remarks
10/12/2021	NA	987.35	NA	NA	NA	NA	
12/12/2021	-0.02	987.33	0.17	-0.24	-0.24	-1.44	Inlet lid adjusted after initial monitoring
2/4/2022	0.04	987.37	0.15	0.48	0.24	3.24	
3/2/2022	-0.04	987.33	0.07	-0.48	-0.24	-6.74	Inlet point moved, new baseline set
4/8/2022	1.11	988.44	0.10	13.32	13.08	131.40	Inlet A-3 shifted since last monitoring
5/9/2022	0	988.44	0.08	0.00	13.08	0.00	Switch to vertical monitoring only
6/8/2022	0.01	988.45	0.08	0.12	13.20	1.46	
7/21/2022	0.02	988.47	0.12	0.24	13.44	2.04	

**Displacement for C103**

Date	Elevation Change (ft)	Elevation (ft)	Time Elapsed (yr)	Elevation Change (in)	Total Elevation Change (in)	Rate (in/yr)	Remarks
10/12/2021	NA	NA	NA	NA	NA	NA	
12/12/2021	NA	NA	NA	NA	NA	NA	Removed after initial monitoring

**Displacement for A104**

Date	Elevation Change (ft)	Elevation (ft)	Time Elapsed (yr)	Elevation Change (in)	Total Elevation Change (in)	Rate (in/yr)	Remarks
12/12/2021	NA	987.40	#N/A	#N/A	#N/A	#N/A	
2/4/2022	0.04	987.44	0.15	0.48	0.48	3.24	
3/2/2022	-0.04	987.40	0.07	-0.48	0.00	-6.74	Inlet point moved, new baseline set
4/8/2022	0.04	987.44	0.10	0.48	0.48	4.74	
5/9/2022	-0.03	987.41	0.08	-0.36	0.12	-4.24	Switch to vertical monitoring only
6/8/2022	0.01	987.42	0.08	0.12	0.24	1.46	
7/21/2022	0.03	987.45	0.12	0.36	0.60	3.06	

**Displacement for A105**

Date	Elevation Change (ft)	Elevation (ft)	Time Elapsed (yr)	Elevation Change (in)	Total Elevation Change (in)	Rate (in/yr)	Remarks
12/12/2021	NA	986.35	NA	NA	NA	NA	
2/4/2022	0.06	986.41	0.15	0.72	0.72	4.87	
3/2/2022	-0.05	986.36	0.07	-0.60	0.12	-8.42	Inlet point moved, new baseline set
4/8/2022	0.01	986.37	0.10	0.12	0.24	1.18	
5/9/2022	-0.01	986.36	0.08	-0.12	0.12	-1.41	Switch to vertical monitoring only
6/8/2022	0.01	986.37	0.08	0.12	0.24	1.46	
7/21/2022	0.02	986.39	0.12	0.24	0.48	2.04	

**Displacement for C106**

Date	Elevation Change (ft)	Elevation (ft)	Time Elapsed (yr)	Elevation Change (in)	Total Elevation Change (in)	Rate (in/yr)	Remarks
12/12/2021	NA	988.24	NA	NA	NA	NA	
2/4/2022	0.04	988.28	0.15	0.48	0.48	3.24	
3/2/2022	-0.07	988.21	0.07	-0.84	-0.36	-11.79	Inlet point moved, new baseline set
4/8/2022	0.03	988.24	0.10	0.36	0.00	3.55	
5/9/2022	0.03	988.27	0.08	0.36	0.36	4.24	Switch to vertical monitoring only
6/8/2022	-0.01	988.26	0.08	-0.12	0.24	-1.46	
7/21/2022	NA	NA	NA	NA	NA	NA	Inlet covered with fill

**Displacement for B107**

Date	Elevation Change (ft)	Elevation (ft)	Time Elapsed (yr)	Elevation Change (in)	Total Elevation Change (in)	Rate (in/yr)	Remarks
4/8/2022	NA	990.01	NA	NA	NA	NA	
5/9/2022	-0.02	989.99	0.08	-0.24	-0.24	-2.83	Switch to vertical monitoring only
6/8/2022	0.01	990.00	0.08	0.12	-0.12	1.46	
7/21/2022	-0.02	989.98	0.12	-0.24	-0.36	-2.04	Switch to vertical monitoring only

**Displacement for C108**

Date	Elevation Change (ft)	Elevation (ft)	Time Elapsed (yr)	Elevation Change (in)	Total Elevation Change (in)	Rate (in/yr)	Remarks
4/8/2022	NA	979.05	NA	NA	NA	NA	
5/9/2022	0.03	979.08	0.08	0.36	0.36	4.24	Switch to vertical monitoring only
6/8/2022	-0.02	979.06	0.08	-0.24	0.12	-2.92	
7/21/2022	0	979.06	0.12	0.00	0.12	0.00	

**Displacement for C109**

Date	Elevation Change (ft)	Elevation (ft)	Time Elapsed (yr)	Elevation Change (in)	Total Elevation Change (in)	Rate (in/yr)	Remarks
4/8/2022	NA	975.28	NA	NA	NA	NA	
5/9/2022	0	975.28	0.08	0.00	0.00	0.00	Switch to vertical monitoring only
6/8/2022	-0.03	975.25	0.08	-0.36	-0.36	-4.38	
7/21/2022	0.01	975.26	0.12	0.12	-0.24	1.02	Switch to vertical monitoring only

**Displacement for C110**

Date	Elevation Change (ft)	Elevation (ft)	Time Elapsed (yr)	Elevation Change (in)	Total Elevation Change (in)	Rate (in/yr)	Remarks
4/8/2022	NA	984.07	NA	NA	NA	NA	
5/9/2022	0	984.07	0.08	0.00	0.00	0.00	Switch to vertical monitoring only
6/8/2022	-0.02	984.05	0.08	-0.24	-0.24	-2.92	
7/21/2022	-0.03	984.02	0.12	-0.36	-0.60	-3.06	

**Displacement for C111**

Date	Elevation Change (ft)	Elevation (ft)	Time Elapsed (yr)	Elevation Change (in)	Total Elevation Change (in)	Rate (in/yr)	Remarks
5/9/2022	NA	986.12	NA	NA	NA	NA	Monitor point installed
6/8/2022	-0.02	986.10	0.08	-0.24	-0.24	-2.92	
7/21/2022	0	986.10	0.12	0.00	-0.24	0.00	

\*Negative values indicate a decrease in elevation

