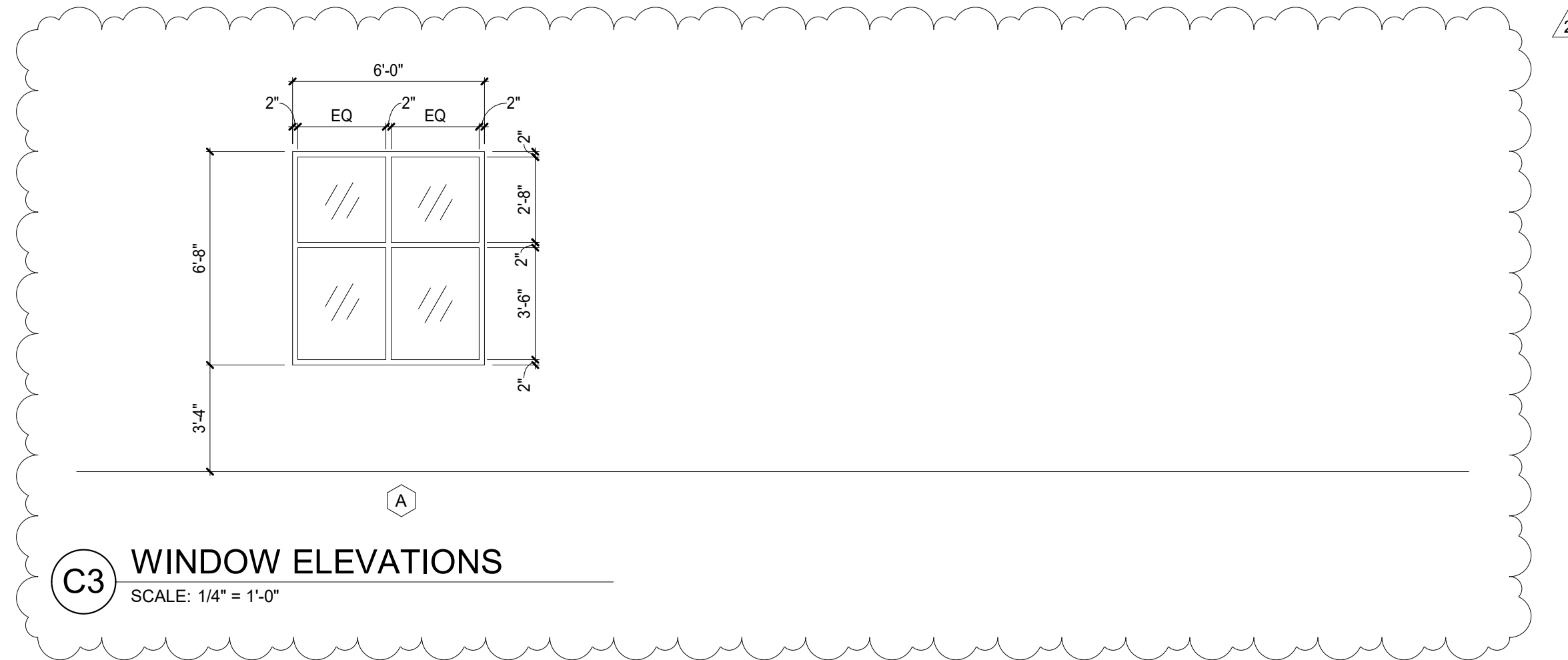


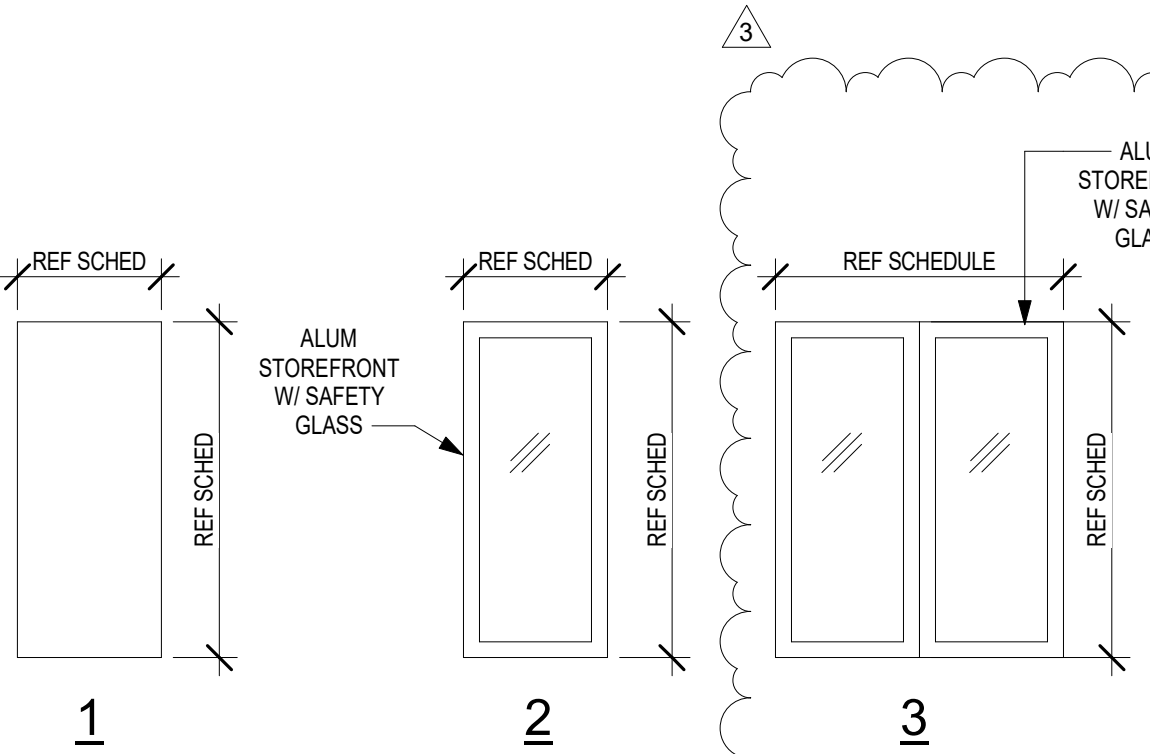
**D4** FRAME EL  
SCALE: 1/4" = 1'-0"



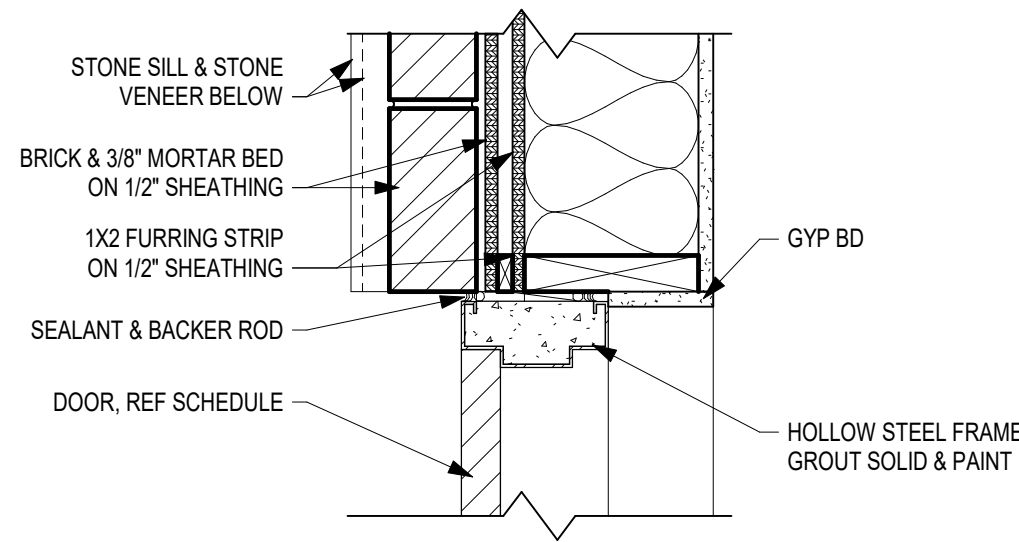
**C3** WINDOW ELEVATIONS  
SCALE: 1/4" = 1'-0"

| DOOR # | DOOR  |       |      |        |      |    | FRAME |        |      |    |      |      | DETAIL | HARDWARE | NOTES |
|--------|-------|-------|------|--------|------|----|-------|--------|------|----|------|------|--------|----------|-------|
|        | W     | HT    | MATL | FINISH | GLAZ | EL | MATL  | FINISH | GLAZ | EL | HEAD | JAMB |        |          |       |
| A101   | 6'-0" | 7'-0" | ALUM | F      | T    | 3  | ALUM  | F      | T    | E  | A2   | A2   | SET 01 |          |       |
| A103   | 3'-6" | 7'-0" | HM   | PT     | ---  | 1  | HM    | PT     | ---  | A  | B2   | B3   | SET 02 |          |       |
| B101   | 3'-0" | 7'-0" | ALUM | F      | T    | 2  | ALUM  | F      | T    | c  | A2   | A2   | SET 03 |          |       |
| B103   | 3'-0" | 7'-0" | HM   | PT     | ---  | 1  | HM    | PT     | ---  | A  | B2   | B3   | SET 02 |          |       |

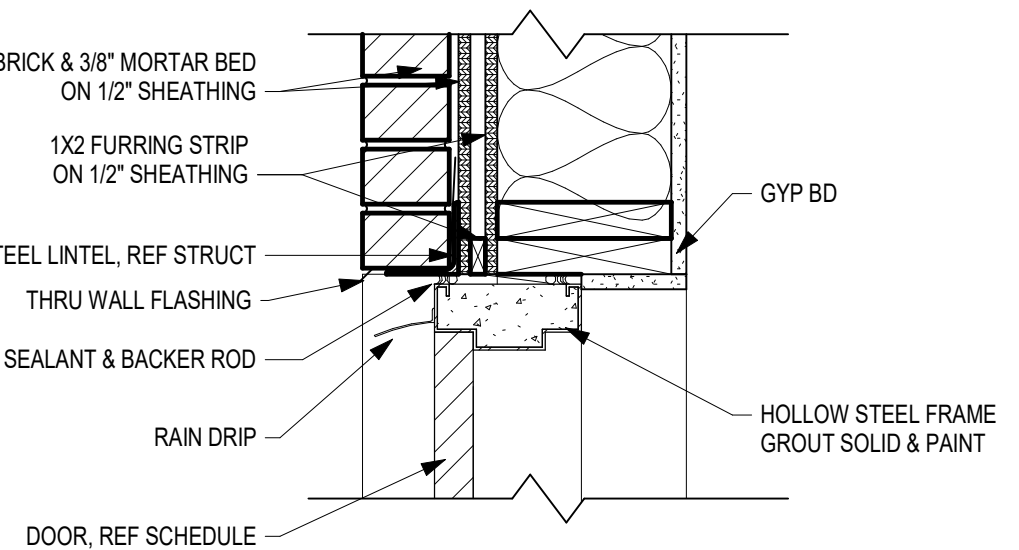
SG = SAFETY GLASS  
ALUM = ALUMINUM  
HM = HOLLOW METAL  
PT = PAINT  
T = TRANSPARENT FINISH  
F = FACTORY FINISH  
SPG = SPANDREL GLASS



**C2** DOOR ELEVATIONS  
SCALE: 1/4" = 1'-0"



**B3** HM JAMB DETAIL  
SCALE: 1 1/2" = 1'-0"



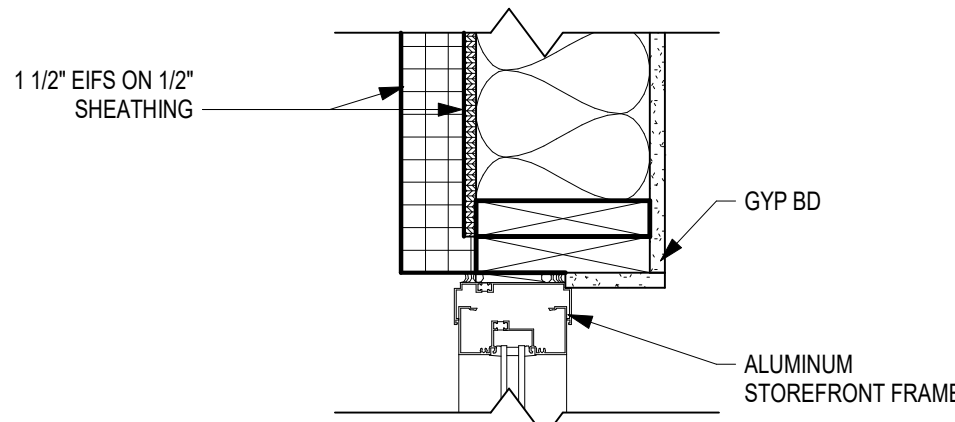
**B2** HM HEAD DETAIL  
SCALE: 1 1/2" = 1'-0"

| QTY.  | DESCRIPTION     | MODEL                      | FINISH   | MFG.   |
|-------|-----------------|----------------------------|----------|--------|
| 3 PR. | HINGES          | BB1191 4 1/2" x 4 1/2" NRP | US10B    | HAGER  |
| 1 EA. | EXIT DEVICE     | 1692                       | DC13     | FALCON |
| 1 EA. | EXIT DEVICE     | 1690                       | DC13     | FALCON |
| 2 EA. | 66" LADDER PULL | 66LPBS                     | US26/626 | CRL    |
| 2 EA. | CLOSER          | SC70-18                    | DC13     | FALCON |
| 2 EA. | STOP            | 100S                       | DC13     | FALCON |
| 1 EA. | THRESHOLD       | 350                        | DKB      | NGP    |
| 2 EA. | DOOR SWEEP      | 200NA                      | DKB      | NGP    |
| 1 EA. | PERIMETER SEAL  | 160S                       | DKB      | NGP    |
| 1 EA. | ASTRAGAL        | 672                        | DKB      | NGP    |

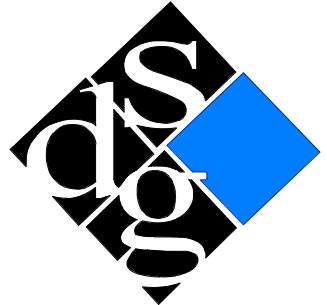
| QTY.  | DESCRIPTION                        | MODEL            | FINISH     | MFG.  |
|-------|------------------------------------|------------------|------------|-------|
| 1 EA. | ROTON HINGE SURFACE MOUNT          | 70-210HD-84      | ALUM       | ROTON |
| 1 EA. | EXIT DEVICE RIM SURFACE MOUNT      | 4501-48-26D      | 26D/626    | HAGER |
| 1 EA. | CLOSER 5100 HOLD OPEN STOP         | 5100-HDHOS-ALUM  | ALUM       | HAGER |
| 1 EA. | ARMOR PLATE 20"x40" S.S.           | 190S-20X40-32D   | 32D        | HAGER |
| 1 EA. | WEATHER STRIPPING NEOPRENE         | 873S-N-4284-MILL | MIL        | HAGER |
| 1 EA. | DOOR BOTTOM SWEEP NEOPRENE         | 750SN-42-CLR     | CL         | HAGER |
| 1 EA. | NGP STEEL SECURITY ASTRAGAL 83"    | 1392SP-USP-83    | PRIME COAT | NGP   |
| 1 EA. | HALF SADDLE THRESHOLD 5'x12"x42"   | 431S-42-MIL      | MIL        | HAGER |
| 1 EA. | OVERHEAD RAIN DRIP GUARD           | 810S-46-MIL      | AL         | HAGER |
| 1 EA. | WIDE ANGLE PEEP HOLE SET @ 45° AFF |                  |            |       |

| QTY.  | DESCRIPTION     | MODEL                      | FINISH   | MFG.   |
|-------|-----------------|----------------------------|----------|--------|
| 3 PR. | HINGES          | BB1191 4 1/2" x 4 1/2" NRP | US10B    | HAGER  |
| 1 EA. | EXIT DEVICE     | 1692                       | DC13     | FALCON |
| 1 EA. | 66" LADDER PULL | 66LPBS                     | US26/626 | CRL    |
| 1 EA. | CLOSER          | SC70-18                    | DC13     | FALCON |
| 1 EA. | STOP            | 100S                       | DC13     | FALCON |
| 1 EA. | THRESHOLD       | 350                        | DKB      | NGP    |
| 1 EA. | DOOR SWEEP      | 200NA                      | DKB      | NGP    |
| 1 EA. | PERIMETER SEAL  | 160S                       | DKB      | NGP    |

**7** HARDWARE SCHEDULE  
SCALE: 1" = 1'-0"



**A2** Storefront HEAD/ JAMB DTL  
SCALE: 1 1/2" = 1'-0"



schwardt design group  
architecture | interiors | planning  
2231 sw wanamaker rd  
topeka, kansas 66614-4275  
phone: 785.773.7410  
suite 303



SCHWARDT DESIGN GROUP INC  
NO CERTIFICATE OF AUTH. #P0035876

**MULTI-TENANT BUILDING - PARCEL #9B**  
**STREETS OF WEST PRYOR: CORE & SHELL**  
LEE'S SUMMIT, JACKSON COUNTY, MISSOURI 64081

| SUBMISSION DATES |   |
|------------------|---|
| 4-4-2022         | 2 |
| 4-28-22          | 3 |
| 5-15-22          | 4 |
| 6-1-22           | 5 |

SHEET TITLE  
SCHEDULES

PROJECT NUMBER  
**210345**

SHEET NUMBER  
**A-601**