

LINETYPES LEGEND:

NEW
NEW - ON ROOF
EXISTING
EXISTING - ON ROOF
DEMOLITION

DUCTWORK LEGEND:

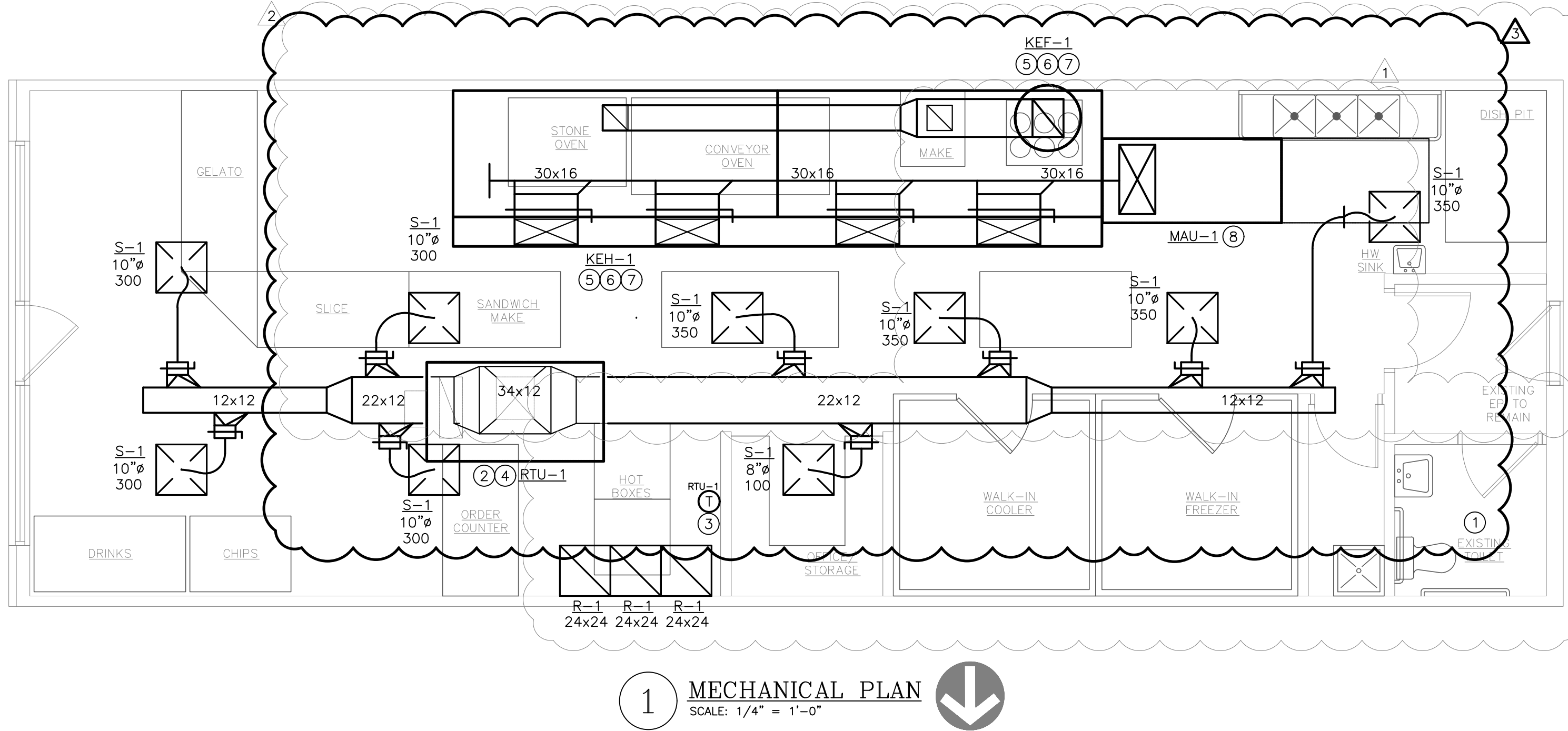
DUCT (SINGLE LINE)
DUCT (DOUBLE LINE)
ROUND O/A OR S/A DOWN
ROUND O/A OR S/A UP
ROUND E/A OR R/A DOWN
RECTANGULAR O/A OR S/A DOWN
RECTANGULAR O/A OR S/A UP
RECTANGULAR E/A OR R/A DOWN
RECTANGULAR E/A OR R/A UP
O/A OR S/A DIFFUSER
E/A OR R/A GRILLE
AIR DEVICE WITH FLEX DUCT CONNECTION
AIR DEVICE WITH HARD DUCT CONNECTION
FLEXIBLE CONNECTION TO EQUIPMENT
DUCT BREAK/CONTINUATION
MANUAL BALANCING DAMPER
MOTOR-OPERATED DAMPER
BACKDRAFT DAMPER
FIRE DAMPER
FIRE/SMOKE DAMPER
SMOKE DAMPER
THERMOSTAT

ANNOTATION LEGEND:

ABC-1 EQUIPMENT / FIXTURE TAG
PLAN NOTE
CONNECT TO EXISTING
AIR FLOW DIRECTION
G/R/D TAG
NECK SIZE
AIR FLOW (CFM)

ABBREVIATIONS LEGEND:

ABOVE FINISHED FLOOR
ABOVE FINISHED GRADE
AIR HANDLING UNIT
AIR PRESSURE DROP
BUILDING AUTOMATION SYSTEM
CONSTANT AIR VOLUME
CUBIC FEET PER MINUTE
CHILLED WATER RETURN
CHILLED WATER SUPPLY
CONDENSING UNIT
CONDENSER WATER RETURN
CONDENSER WATER SUPPLY
DIRECT DIGITAL CONTROL
EXISTING
EXHAUST AIR
ENTERING AIR TEMPERATURE
EXHAUST FAN
EXHAUST GRILLE
EXTERNAL STATIC PRESSURE
ENTERING WATER TEMPERATURE
FAN COIL UNIT
FROM FLOOR ABOVE
FROM FLOOR BELOW
FEET PER MINUTE
FEET WATER GAUGE
GALLONS PER MINUTE
HEATING CAPACITY
HORSEPOWER
HIGH PRESSURE CONDENSATE (>30 PSIG)
HIGH PRESSURE STEAM (>30 PSIG)
HUMIDIFIER
HEATING WATER RETURN
HEATING WATER SUPPLY
INTEGRAL FACE AND BYPASS
INCHES WATER GAUGE
LEAVING AIR TEMPERATURE
LOW PRESSURE CONDENSATE (<15 PSIG)
LOW PRESSURE STEAM (<15 PSIG)
LEAVING WATER TEMPERATURE
MINIMUM
1,000 BTUH
MEDIUM PRESSURE CONDENSATE (15<MPC<30 PSIG)
MEDIUM PRESSURE STEAM (15<MPS<30 PSIG)
NOISE CRITERIA
OUTDOOR AIR
PUMPED STEAM CONDENSATE
QUANTITY
RETURN AIR
RELIEF AIR
REFRIGERANT
RETURN FAN
RETURN GRILLE
ROOFTOP UNIT
SUPPLY AIR
SENSIBLE COOLING CAPACITY
SUPPLY DIFFUSER
STEAM
TOTAL COOLING CAPACITY
TO FLOOR ABOVE
TO FLOOR BELOW
TO ROOF ABOVE
TOTAL STATIC PRESSURE
VARIABLE AIR VOLUME
VELOCITY
VARIABLE FREQUENCY DRIVE
WATER PRESSURE DROP



1 MECHANICAL PLAN
SCALE: 1/4" = 1'-0"

ROOFTOP UNIT SCHEDULE																						
TAG	MANUF	MODEL	SERIES	TONS	SUPPLY FAN				TYPE	COOLING					HEATING (GAS)			ELECTRICAL			WEIGHT (LBS)	NOTES
					CFM	OA CFM	HP	ESP (IN)		TOT CAP (MBH)	SENS CAP (MBH)	EAT (DB/WB)	LAT (DB/WB)	IEER (MIN)	OUTPUT (MBH)	INPUT (MBH)	STAGES	VOLTAGE	MCA	MOPC		
RTU-1	YORK	ZR090	SUNPRO	7.5	2700	900	3	0.6	R-410A	90	64.8	80/67	59.4/57.2	13.8	144	180	2	208/3	42.4	50	1300	ALL

NOTES:

1. PROVIDE WITH CONTROLLER AND CONTROL DEVICES BY MANUFACTURER. REFER TO SEQUENCES OF OPERATION.

2. PROVIDE WITH WI-FI COMPATIBLE 7-DAY PROGRAMMABLE THERMOSTAT.

3. PROVIDE WITH FIXED DRY BULB TYPE ECONOMIZER ASSEMBLY.

4. PROVIDE NEW CURB AT EXISTING CURB LOCATION. CONTRACTOR OPTION TO PROVIDE MANUFACTURER'S STANDARD CURB ADAPTER TO CONNECT TO EXISTING ROOFTOP UNIT CURB INSTEAD.

5. PROVIDE WITH NON-POWERED WEATHER-PROOF DUPLEX RECEPTACLE.

6. PROVIDE WITH 2" THICK, MINIMUM MERV-8 FILTERS.

7. PROVIDE WITH FACTORY-MOUNTED RETURN AIR SMOKE DETECTOR.

8. PROVIDE WITH CONDENSER COIL GUARDS.

9. UNIT SIZED FOR 100°F AMBIENT CONDENSING TEMPERATURE.

10. PROVIDE WITH MANUFACTURER'S STANDARD DISCONNECT SWITCH.

11. PROVIDE WITH HOT GAS REHEAT COIL FOR DEHUMIDIFICATION CONTROL SEQUENCE.

12. PROVIDE SPACE MOUNTED HUMIDITY SENSOR TO ENABLE DEHUMIDIFICATION.

13. PROVIDE RTU WITH HINGED AND TOOLLESS ACCESS WITH SLIDE OUT BLOWER MOTOR ASSEMBLY.

OUTDOOR AIR CALCULATIONS (MECHANICAL VENTILATION)									
TAG	OCCUPANCY CLASSIFICATION	AREA (FT²)	OCCUPANTS (QTY)	R _p (CFM/PERSON)	MIN OCCUPANT O/A FLOW (CFM)	R _a (CFM/FT²)	MIN AREA O/A FLOW (CFM)	MIN REQ'D O/A FLOW (CFM)	PROVIDED MIN O/A FLOW (CFM)
RTU-1	WAITING	368	6	5	30	0.06	23		
	OFFICE	39	1	5	5	0.06	3	234	900
	KITCHEN	618	13	7.5	97.5	0.12	75		

NOTES:
1. R_p REPRESENTS PEOPLE OUTDOOR AIRFLOW RATE IN BREATHING ZONE PER TABLE 403.3.
2. R_a REPRESENTS AREA OUTDOOR AIRFLOW RATE IN BREATHING ZONE PER TABLE 403.3.

GRILLES, REGISTERS AND DIFFUSERS						
TAG	MANUFACTURER	MODEL	MOUNTING	FACE SIZE	MAX NC	MAX DP
S-1	PRICE	SCD	CEILING	24x24	30	0.1
R-1	PRICE	PDDR	CEILING	24x24	30	0.1
NOTES: 1. NECK SIZE SHOWN ON PLANS. 2. 4 WAY THROW UNLESS INDICATED OTHERWISE ON PLANS. 3. BAKED ENAMEL FINISH, WHITE TO MATCH CEILING/WALL COLOR. VERIFY WITH ARCHITECT PRIOR TO ORDER. 4. FRAME TYPE TO MATCH CEILING/WALL CONSTRUCTION. COORDINATE WITH ARCHITECTURAL REFLECTED CEILING PLAN.						

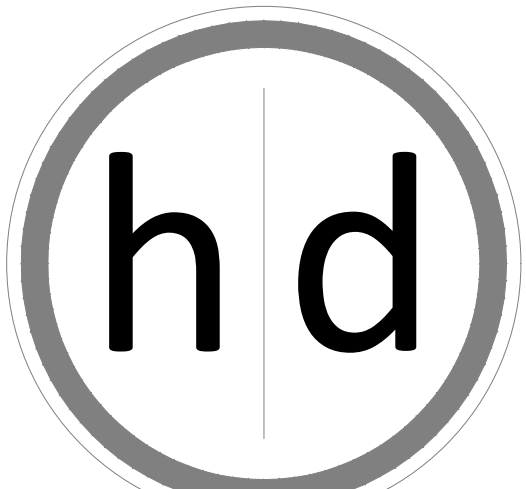
MAKEUP AIR UNIT																
TAG	AREA SERVED	MANUFACTURER	MODEL	MOUNTING	AIR FLOW (CFM)	ESP (IN.WG)	MOTOR POWER	DRIVE TYPE	EAT (DEGF)	LAT (DEGF)	GAS INPUT (MBH)	OUTPUT (MBH)	V/PH	MCA	MOPP	NOTES
MAU-1	KITCHEN HOODS	GREENHECK	DGX	ROOF	4000	0.75	3 HP	DIRECT	0	60	250.0	230.0	208/3	13.7	20	ALL
NOTES:																
1. PROVIDE WITH MANUFACTURER'S RECOMMENDED ROOF CURB ADAPTER WITH FINAL FILTER CABINET. OUTSIDE AIR INTAKE SHALL BE A MINIMUM OF 36" ABOVE THE FINISHED ROOF.																
2. PROVIDE FANS WITH VARIABLE FREQUENCY DRIVES FOR BALANCING PURPOSES ONLY.																
3. PROVIDE ELECTRICAL WIRING AS REQUIRED FOR A SINGLE DISCONNECT MEANS.																
4. REPLACE FILTERS AT COMPLETION OF WORK.																
5. EXTERNAL STATIC PRESSURE (ESP) ACCOUNTS FOR DUCTWORK AND AIR DISTRIBUTION LOSSES, PLUS AN ALLOWANCE FOR DIRTY FILTERS. INTERNAL LOSSES (COIL PRESSURES, CLEAN FILTERS, ETC.) SHALL BE INCLUDED IN THE FAN TOTAL STATIC PRESSURE (TSP).																
6. INTERLOCK MAKE-UP AIR UNIT WITH HOOD SYSTEM TO OPERATE WHEN THE HOOD IS IN OPERATION.																

MECHANICAL PLAN NOTES:

- EXISTING BATHROOM TO REMAIN. NO NEW WORK.
- PROVIDE NEW ROOFTOP UNIT AT EXISTING ROOFTOP UNIT LOCATION. PROVIDE NEW ROOFTOP UNIT CURB AS REQUIRED.
- PROVIDE NEW THERMOSTAT WHERE INDICATED ON PLAN. PROVIDE NEW CONTROL WIRING AS REQUIRED TO ACCOMMODATE NEW LOCATION. WIRE TO HVAC UNIT CONTROLLER PER INSTALLATION INSTRUCTIONS.
- EXTEND SUPPLY AND RETURN AIR DROPS FROM RTU'S TO BELOW STRUCTURE. EXTEND SUPPLY DUCT HORIZONTALLY AS SHOWN.
- ROUTE EXHAUST DUCT FROM HOOD TO ROOF MOUNT UPBLAST EXHAUST FAN (FAN AND HOOD BY OWNER). LOCATE DISCHARGE AT MINIMUM OF 10'-0" FROM ANY BUILDING OPENINGS, OUTDOOR AIR INTAKES OR FIRE SEPARATIONS. SEE KITCHEN HOOD EXHAUST EQUIPMENT DRAWINGS FOR INFORMATION RELATED TO EXHAUST FANS, HOODS, AND THEIR INSTALLATION. KITCHEN EXHAUST SYSTEM DRAWINGS PROVIDED BY OWNER. COORDINATE WITH APPROVED SHOP DRAWINGS.
- INSTALL KITCHEN EXHAUST HOODS AND DUCTWORK FROM HOOD TO EXHAUST FAN PER MANUFACTURER'S RECOMMENDATIONS. SEE KITCHEN EXHAUST DRAWINGS FOR INFORMATION RELATED TO EXHAUST FAN AND INSTALLATION. KITCHEN EXHAUST SYSTEM DRAWINGS PROVIDED BY OWNER. COORDINATE WITH APPROVED SHOP DRAWINGS.
- NEW KITCHEN EXHAUST HOOD SYSTEM TO BE PROVIDED BY OWNER. HOOD SHALL BE FULLY COMPLIANT WITH THE 2018 INTERNATIONAL MECHANICAL CODE SECTION 506 AND INCLUDE THE FOLLOWING: EXHAUST HOOD WITH DIMENSIONS THAT EXTEND MINIMUM OF 6" BEYOND THE APPLIANCES IT SERVES, HOOD EXHAUST FAN AND EXHAUST CONNECTION AND HOOD MAKE-UP AIR UNIT AND SUPPLY PLENUM WITH MAKE-UP AIR CONNECTIONS. EXHAUST DUCTWORK SHALL BE BLACK IRON DUCTWORK WITH 2 LAYERS OF FIRE WRAP AS REQUIRED BY SECTION 506 OF THE INTERNATIONAL MECHANICAL CODE.
- PROVIDE NEW MAKE UP AIR UNIT AS SHOWN FOR MAKE-UP AIR TO EXHAUST HOOD SUPPLY PLENUM. COORDINATE EXACT CONNECTION REQUIREMENTS WITH OWNER PROVIDED HOOD DRAWINGS. COORDINATE WITH STRUCTURAL ENGINEER FOR EXACT LOCATION.

MECHANICAL GENERAL NOTES:

- DRAWINGS ARE SCHEMATIC IN NATURE AND BASED ON PRELIMINARY SITE OBSERVATION AND ORIGINAL DESIGN DRAWINGS (WHEN AVAILABLE). CONTRACTOR SHALL INVESTIGATE THE PROJECT SITE AND BECOME FULLY AWARE OF ALL FIELD CONDITIONS, CURRENT SYSTEM OPERATION, AS WELL AS COORDINATION REQUIREMENTS. COORDINATE ALL MECHANICAL WORK WITH ARCHITECTURAL DRAWINGS, EXISTING CONDITIONS, AND OTHER TRADES PRIOR TO START OF WORK.
- MECHANICAL WORK SHALL CONFORM TO APPLICABLE CODES AS ADOPTED BY THE LOCAL AUTHORITY HAVING JURISDICTION.
- COORDINATE WITH ELECTRICAL CONTRACTOR FOR REQUIRED ELECTRICAL POWER WIRING AND ROUGH-IN FOR LOW-VOLTAGE CONTROL WIRING. PROVIDE ALL CONTROL WIRING AND FINAL CONTROL DEVICE (E.G. THERMOSTATS).
- FABRICATE AND INSTALL DUCTWORK PER SMACNA RECOMMENDATIONS FOR THE PRESSURE CLASSIFICATIONS ENCOUNTERED.
 - LOW PRESSURE SUPPLY AIR: +2.0 IN.WG
 - RETURN AIR: -2.0 IN.WG
 - EXHAUST AIR (UPSTREAM OF FAN): -2.0 IN.WG
 - EXHAUST AIR (DOWNSTREAM OF FAN): +1.0 IN.WG
- PROVIDE MITERED ELBOWS AT CHANGES IN DIRECTION IN RECTANGULAR DUCTWORK. PROVIDE TURNING VANES IN ALL ELBOWS WHERE AIRFLOW CHANGES DIRECTION AT ANGLES 45° AND GREATER, EXCEPT FOR RETURN AIR TRANSFER DUCTS.
- PROVIDE DUCT WRAP INSULATION FOR ALL ROUND AND RECTANGULAR SUPPLY AIR DUCTWORK. DUCT WRAP INSULATION SHALL BE 2" THICK, MINIMUM R-6.0 FIBERGLASS DUCT WRAP WITH VAPOR BARRIER.
- CONTRACTOR OPTION: PROVIDE INTERNAL LINER INSULATION FOR SUPPLY AIR DUCTWORK. INTERNAL LINER INSULATION SHALL BE 1" THICK, 2 LB/FT³ ACOUSTICAL DUCT LINER INSULATION WITH MINIMUM R-6.0. DUCT LINER IS NOT ALLOWED FOR HOSPITAL USE.
- PROVIDE INTERNAL LINER INSULATION FOR ALL RECTANGULAR RETURN AIR TRANSFER DUCTWORK. INTERNAL LINER INSULATION SHALL BE 1" THICK, 2 LB/FT³ ACOUSTICAL DUCT LINER INSULATION.
- DUCT DIMENSIONS SHOWN ON THE PLANS INDICATE THE FREE AREA DIMENSIONS. INCREASE SHEET METAL DIMENSIONS AS REQUIRED TO MEET FREE AREA DIMENSIONS WITH LINER INSTALLED.
- FLEXIBLE DUCTWORK SHALL HAVE 2" THICK, MINIMUM R-6.0 INSULATION. FLEXIBLE DUCTWORK SHALL NOT EXCEED 5'-0" IN LENGTH FOR SUPPLY AIR APPLICATIONS AND 3'-0" IN LENGTH FOR RETURN AIR AND EXHAUST AIR APPLICATIONS.
- PROVIDE BALANCING DAMPERS IN DUCT TAKE-OFFS TO AIR DEVICES IN LAY-IN CEILINGS, IN THE NECKS OF AIR DEVICES IN GYP BOARD CEILINGS, AND IN THE NECKS OF SIDE WALL AIR DEVICES FOR PROPER AIR BALANCING.
- TOILET ROOM EXHAUST FANS SHALL BE AS SCHEDULED. PROVIDE A MINIMUM OF 75 CFM EXHAUST PER FLUSH FIXTURE.
- COORDINATE ALL REQUIRED ROOF PENETRATIONS WITH ROOFING CONTRACTOR TO AVOID ROOF WARRANTY CONFLICTS.
- VERIFY AVAILABLE SPACE ABOVE ALL CEILINGS PRIOR TO FABRICATION OR INSTALLATION OF ANY DUCTWORK. COORDINATE DUCT INSTALLATION WITH OTHER TRADES.
- ALL DIMENSIONS SHOWN ON PLAN ARE IN INCHES, UNLESS EXPLICITLY LABELED OTHERWISE.
- PROVIDE A COMPLETE TEST AND BALANCE BY A NEBB CERTIFIED TEST AND BALANCE AGENCY.
- PROVIDE ACCESS PANELS AND ADEQUATE CLEARANCE FOR ACCESS TO ALL EQUIPMENT, VALVES, DAMPERS AND DEVICES.
- INSPECT ALL EXISTING MECHANICAL EQUIPMENT TO REMAIN. REPORT ANY DEFICIENCIES TO OWNER PRIOR TO START OF WORK.
- LABEL ALL DUCTWORK, PIPING, MAINTENANCE DEVICES, AND EQUIPMENT WITH MANUFACTURER STANDARD LABELING SYSTEMS. COORDINATE WITH OWNER FOR FINAL EQUIPMENT DESIGNATIONS.



15225 Broadmoor Street
Overland Park, KS 66223

hjd Architecture, LLC

State Certificate of Authority Number:
A-1234

Name - Gregory D. Highberger

License -Missouri - 007530

MEP CONSULTANT

SBY5 Engineers, LLC

1100 Main Street, Floor 4
Kansas City, MO 64105
(913) 689-9449



7/19/22
LICENSE # PE-2014007261
BROCK CENTURIE, LICENSED ENGINEER

A Tenant Finish for:

The Pizzeria

805 NE Lakewood Boulevard
Lee's Summit, MO 64064

Date 1/14/2022
Job Number 22-001
Drawn By
Checked By

Revisions	Number	Date	Description
	1	07/19/2022	MISC. REV.

5BY5
ENGINEERS

1100 Main Street, 4th Floor
Kansas City, MO 64105
Missouri COA: 2017040776
913-689-9449
contact@5by5eng.com
5by5eng.com

M1.0

© 2022, hjd Architecture, LLC. ALL RIGHTS RESERVED.

DEVELOPMENT SERVICES
LEE'S SUMMIT, MISSOURI

08/02/2022

LINETYPES LEGEND:

- NEW - ABOVE SLAB
- NEW - BELOW SLAB
- EXISTING - ABOVE SLAB
- EXISTING - BELOW SLAB
- DEMOLITION

PIPING LEGEND:

- ELBOW DOWN
- ELBOW UP
- P-TRAP
- TEE DOWN
- ELBOW UP
- SHUT-OFF VALVE (GENERIC)
- BALL VALVE
- GLOBE VALVE
- BUTTERFLY VALVE
- GATE VALVE
- CHECK VALVE
- BALANCING VALVE
- PRESSURE REDUCING VALVE
- GAS COCK
- WYE-STRAINER
- UNION
- FLANGE
- RELIEF VALVE
- AIR VENT (MANUAL / AUTOMATIC)
- FLOW DIRECTION
- PIPE BREAK / CONTINUATION
- FLOOR DRAIN
- FLOOR SINK
- FLOOR CLEANOUT
- HOSE BIBB

ANNOTATION LEGEND:

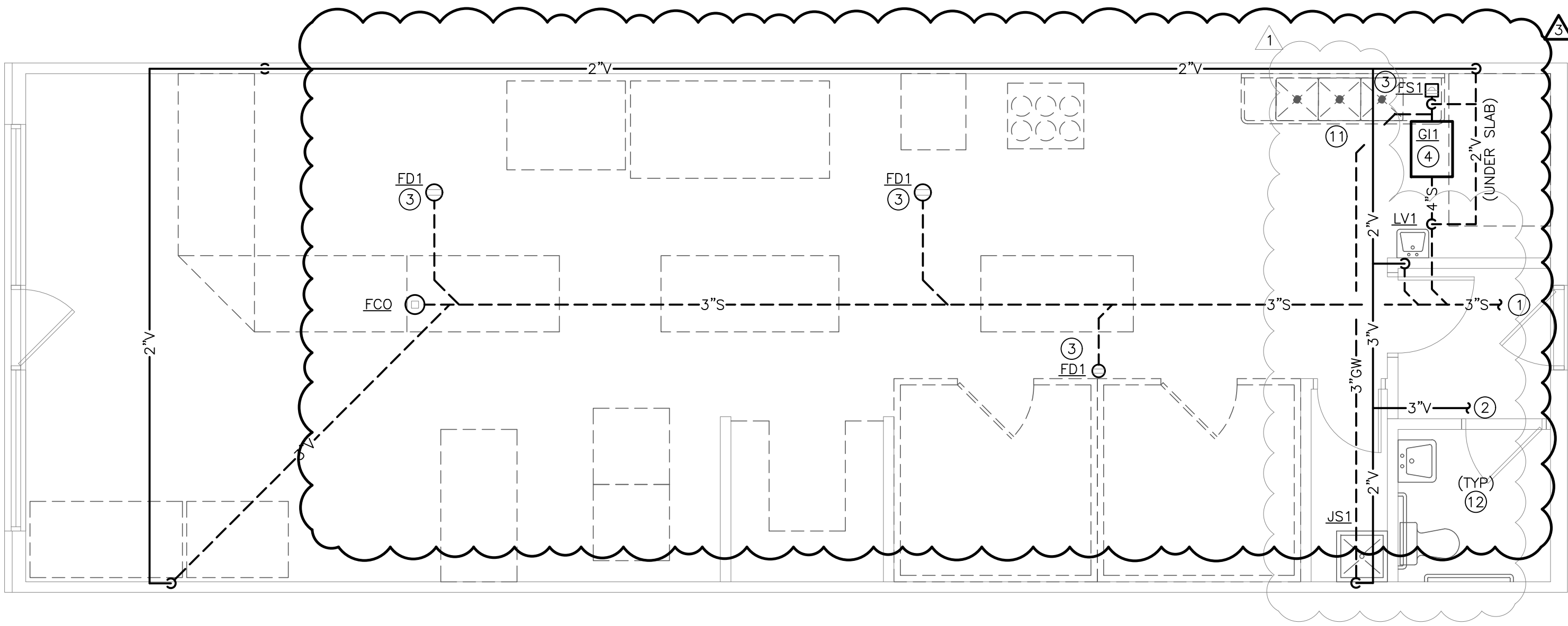
- EQUIPMENT / FIXTURE TAG
- PLAN NOTE
- CONNECT TO EXISTING

ABBREVIATIONS LEGEND:

- ABOVE FINISHED FLOOR
- ABOVE FINISHED GRADE
- BOTTOM OF PIPE
- BATHTUB
- CUBIC FEET PER HOUR
- CLEANOUT
- DOMESTIC COLD WATER
- DRINKING FOUNTAIN
- DOWN
- DOWNSPOUT NOZZLE
- EXISTING
- EXPANSION TANK
- ELECTRIC WATER COOLER
- EYE WASH STATION
- FLOOR CLEANOUT
- FLOOR DRAIN
- FINISHED FLOOR
- FROM FLOOR ABOVE
- FROM FLOOR BELOW
- FLOOR SINK
- GREASE INTERCEPTOR
- GALLONS PER MINUTE
- HOSE BIBB
- HORSEPOWER
- HOT WATER RECIRCULATION
- INVERT ELEVATION
- INCHES WATER GAUGE
- JANITOR SINK
- LINT INTERCEPTOR
- LAUNDRY SINK
- LAVATORY
- MAXIMUM
- MOP BASIN
- 1,000 BTUH
- MINIMUM
- NATURAL GAS
- NON-FREEZE HOSE BIBB
- NON-FREEZE ROOF HYDRANT
- OVERFLOW ROOF DRAIN
- QUANTITY
- ROOF DRAIN
- RECIRCULATION PUMP
- REDUCED PRESSURE ZONE BACKFLOW PREVENTER
- SANITARY WASTE
- SHOWER
- SINK
- SERVICE SINK
- SEWAGE PUMP
- TRENCH DRAIN
- TO FLOOR ABOVE
- TO FLOOR BELOW
- THERMOSTATIC MIXING VALVE
- TO ROOF ABOVE
- TOTAL STATIC PRESSURE
- URINAL
- VENT
- WATER CLOSET
- WATER HEATER
- WALL CLEANOUT
- WATER PRESSURE DROP

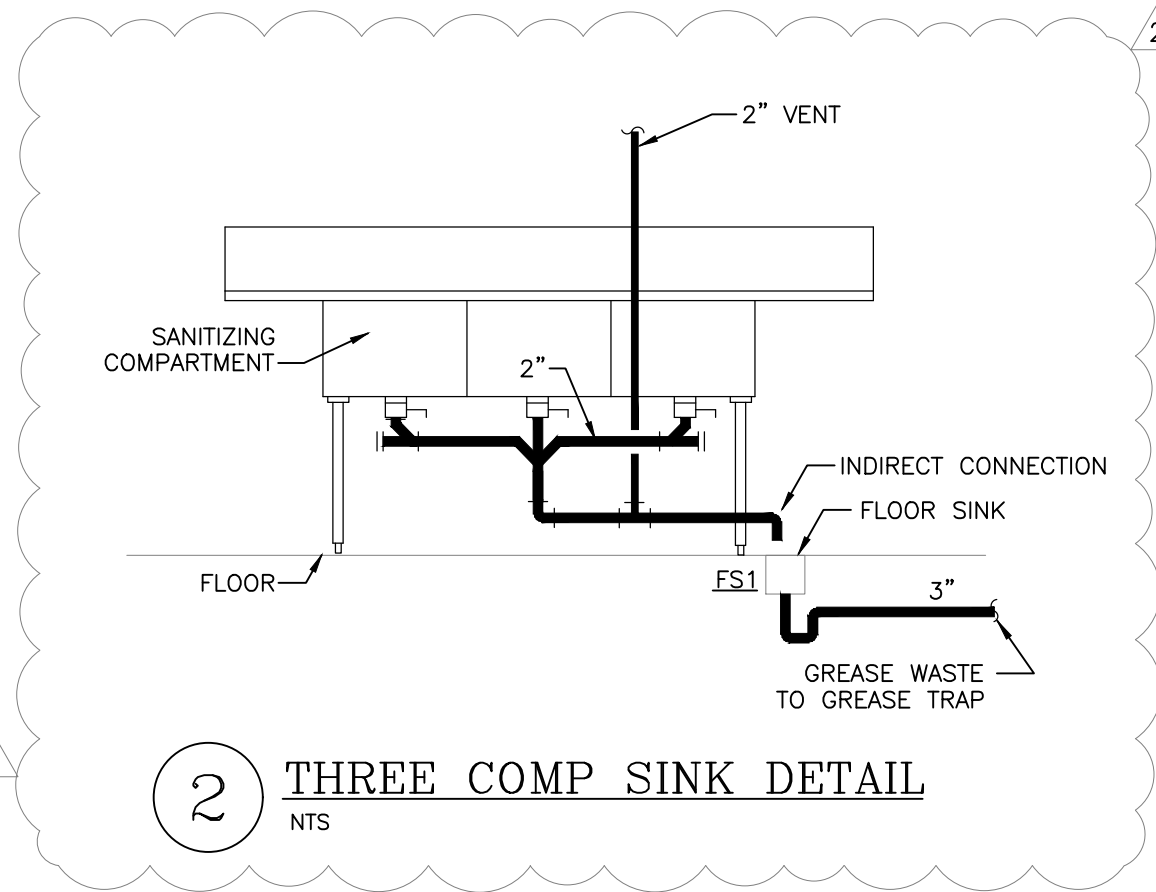
PLUMBING GENERAL NOTES:

- DRAWINGS ARE SCHEMATIC IN NATURE AND BASED ON PRELIMINARY SITE OBSERVATION AND ORIGINAL DESIGN DRAWINGS (WHEN AVAILABLE). CONTRACTOR SHALL INVESTIGATE THE PROJECT SITE AND BECOME FULLY AWARE OF ALL FIELD CONDITIONS, CURRENT SYSTEM OPERATION, AS WELL AS COORDINATION REQUIREMENTS. COORDINATE ALL PLUMBING WORK WITH ARCHITECTURAL DRAWINGS, EXISTING CONDITIONS, AND OTHER TRADES PRIOR TO BID OR START OF WORK.
- PLUMBING WORK SHALL CONFORM TO APPLICABLE CODES AS ADOPTED BY THE LOCAL AUTHORITY HAVING JURISDICTION.
- PRIOR TO START OF WORK, CONTRACTOR SHALL CAMERA ALL EXISTING UNDERGROUND SANITARY SEWER LINES. VERIFY UNDERGROUND PIPING LOCATION, DEPTH AND FLOW DIRECTION. REPORT ANY PIPING DAMAGE OR LOCATION DISCREPANCIES TO ENGINEER AND/OR OWNER PRIOR TO START OF WORK.
- EXACT LOCATION AND ELEVATIONS OF ALL EXISTING UTILITIES SHALL BE VERIFIED PRIOR TO ANY INSTALLATION OF CONNECTIONS THEREOF. ALL CONNECTIONS TO EXISTING UTILITIES (E.G. DOMESTIC WATER, SEWER, VENT, AND NATURAL GAS) SHALL BE MADE WITH APPROVAL OF THE ADMINISTRATIVE AUTHORITY AND THE RESPECTIVE UTILITY COMPANIES.
- SANITARY WASTE, VENT, AND STORM PIPING BELOW GRADE SHALL BE SCHEDULE 40 PVC WITH SOLVENT-WELDED JOINTS.
- SANITARY WASTE, VENT, AND STORM PIPING ABOVE GRADE SHALL BE NO-HUB CAST IRON IN RETURN AIR PLENUM APPLICATIONS. PVC OR ABS PIPING CAN BE USED IN AREAS OTHER THAN RETURN AIR PLENUMS AS ALLOWED BY CODE.
- SLOPE SANITARY PIPING AS FOLLOWS: 1/4" PER FOOT FOR PIPE SIZES 2-1/2" AND SMALLER, AND 1/8" PER FOOT FOR PIPE SIZES 3" AND LARGER.
- COORDINATE CONDENSATE DRAIN REQUIREMENTS WITH THE HVAC CONTRACTOR AND OTHER TRADES.
- CONDENSATE DRAIN PIPING SHALL BE TYPE M COPPER PIPING WITH WROUGHT FITTINGS AND SOLDERED JOINTS IN RETURN AIR PLENUM APPLICATIONS. PVC CAN BE USED IN AREAS OTHER THAN RETURN AIR PLENUMS AS ALLOWED BY CODE.
- SLOPE CONDENSATE DRAIN PIPING AS FOLLOWS: 1/4" PER FOOT FOR ALL PIPE SIZES.
- PROVIDE WATER SUPPLY SHUT-OFF VALVES ON EACH TOILET ROOM GROUP AND TO MISCELLANEOUS EQUIPMENT.
- PROVIDE SIZE "A" WATER HAMMER ARRESTORS ON SUPPLY TO ALL PLUMBING FIXTURES.
- PROVIDE STOP VALVES ON ALL INDIVIDUAL PLUMBING FIXTURE SUPPLIES.
- COORDINATE SELECTION OF ALL PLUMBING FIXTURES WITH ARCHITECT AND OWNER. ALL HANDICAPPED FIXTURES (WHERE REQUIRED) SHALL COMPLY WITH A.D.A. REQUIREMENTS.
- DOMESTIC WATER PIPING BELOW GRADE SHALL BE TYPE K SOFT COPPER WITH FLARED FITTINGS OR TYPE K HARD COPPER WITH WROUGHT FITTINGS AND SOLDERED JOINTS.
- DOMESTIC WATER PIPING ABOVE GRADE SHALL BE TYPE L COPPER WITH WROUGHT FITTINGS AND SOLDERED JOINTS.
- WHERE ALLOWED BY CODE, CROSS-LINKED POLYETHYLENE (PEX) PIPING MAY BE USED IN LIEU OF COPPER PIPING. ADJUST SIZING OF PIPING FOR REDUCED FREE AREA OF PEX PIPING. ALL PEX PIPE ROUTED IN RETURN AIR PLENUMS MUST MEET THE FLAME SPREAD RATING AND SMOKE DEVELOPED RATING FOR SUCH APPLICATIONS.
- INSULATE NEW DOMESTIC COLD WATER, HOT WATER, HOT WATER RECIRCULATION, INTERIOR CONDENSATE DRAIN, AND STORM PIPING WITH MINIMUM 1" FIBERGLASS INSULATION (MINIMUM R-4.0) WITH PAPER COVERING.
- ALL NATURAL GAS PIPING SHALL BE SCHEDULE 40 BLACK STEEL WITH MALLEABLE FITTINGS. SUPPORT PIPING AT INTERVALS NOT TO EXCEED THOSE LISTED IN TABLE 415.1 OF THE INTERNATIONAL FUEL GAS CODE.
- PROVIDE RUST-INHIBITOR ON PAINT ALL NATURAL GAS PIPING LOCATED EXTERIOR TO THE BUILDING.
- PROVIDE A.G.A. APPROVED GAS COCKS AND DIRT LEGS AT CONNECTIONS TO ALL GAS-FIRED EQUIPMENT.
- INSTALL ALL PLUMBING EQUIPMENT, FIXTURES, VALVES, ETC. PER MANUFACTURER'S INSTALLATION REQUIREMENTS. PROVIDE ADDITIONAL APPURTENANCES PER MANUFACTURER'S INSTALLATION REQUIREMENTS.
- INSTALL CLEANOUTS AT EVERY END OF SANITARY PIPING RUNS, AT MINIMUM OF EVERY 100'-0" OF SANITARY PIPING, AND AT EVERY CHANGE IN DIRECTION GREATER THAN 45°. REFER TO SECTION 708 OF THE INTERNATIONAL PLUMBING CODE FOR ADDITIONAL REQUIREMENTS.
- ALL FLOOR DRAINS SHALL HAVE A 2" THROAT AND P-TRAP UNLESS NOTED OTHERWISE.
- PLUMBING CONTRACTOR SHALL INSPECT ALL PLUMBING EQUIPMENT TO REMAIN. REPORT ANY DEFICIENCIES TO OWNER PRIOR TO START OF WORK.
- CONTRACTOR SHALL LABEL ALL PIPING, VALVES AND EQUIPMENT WITH MANUFACTURER STANDARD LABELING SYSTEMS. COORDINATE WITH OWNER FOR FINAL EQUIPMENT DESIGNATIONS.



1 PLUMBING WASTE & VENT PLAN

SCALE: 1/4" = 1'-0"

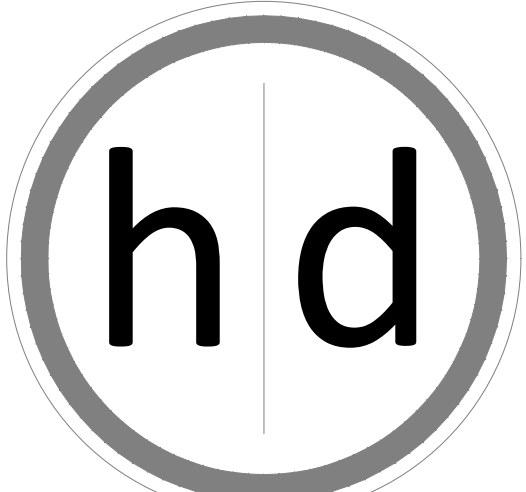


2 THREE COMP SINK DETAIL

NTS

PLUMBING PLAN NOTES:

- EXTEND 3" SANITARY TO EXISTING SANITARY MAIN SERVING THIS SPACE. FIELD VERIFY EXACT LOCATION AND FLOW DIRECTION.
- EXTEND NEW 3" VENT SYSTEM TO EXISTING VENT SYSTEM SERVING RESTROOM. FIELD VERIFY EXISTING LOCATION. MAINTAIN A MINIMUM OF 10'-0" FROM ANY AIR INTAKE OR BUILDING OPENING.
- COORDINATE EXACT LOCATION OF ALL FLOOR SINKS AND FLOOR DRAINS WITH FINAL OWNER EQUIPMENT LAYOUT. COORDINATE EXACT ROUGH-IN LOCATION OF ALL UTILITIES WITH FINAL OWNER EQUIPMENT LAYOUT AND CAPACITIES. CONNECT UTILITIES TO ALL KITCHEN EQUIPMENT PER KITCHEN EQUIPMENT MANUFACTURER REQUIREMENTS, FIXTURE CONNECTION SCHEDULE AND LOCAL CODES. ROUTE ALL KITCHEN EQUIPMENT INDIRECT DRAINS TO NEAREST FLOOR SINK.
- LOCATE GREASE INTERCEPTOR ON STAND WHERE SHOWN. COORDINATE HEIGHT OF STAND AS REQUIRED TO MEET FLOW LINE OF GREASE WASTE PIPING CONNECTING TO EXISTING SYSTEM. PROVIDE FLOW CONTROL DEVICE ON GREASE INTERCEPTOR INLET WHERE SHOWN. ALL KITCHEN DRAINAGE SHALL ENTER THE FLOW CONTROL DEVICE BEFORE ENTERING THE GREASE INTERCEPTOR. INSTALL PER MANUFACTURER'S INSTALLATION INSTRUCTIONS. INSTALL GREASE TRAP AND VENT PER MANUFACTURER'S INSTALLATION INSTRUCTIONS.
- EXTEND COLD WATER DOWN TO BEVERAGE SYSTEM. CONNECT TO BEVERAGE SYSTEM THROUGH A BEVERAGE RATED DOUBLE-CHECK VALVE BACKFLOW PREVENTER AS REQUIRED BY LOCAL CODE. COORDINATE WITH FIXTURE CONNECTION SCHEDULE FOR ADDITIONAL REQUIREMENTS.
- PROVIDE NEW 3" NATURAL GAS SERVICE WHERE SHOWN. SPLIT NATURAL GAS TO 2 LINES AS INDICATED (EACH LINE SHALL BE 2" MIN SIZE). REFER TO NATURAL GAS LOAD SCHEDULE FOR DISTANCE, CAPACITY AND SIZING DETAILS.
- EXTEND NATURAL GAS TO ROOFTOP UNIT ON ROOF. PROVIDE DIRT LEG AND GAS COCK AT ROOFTOP UNIT CONNECTION. REFER TO ROOFTOP UNIT INSTALLATION INSTRUCTIONS FOR ADDITIONAL REQUIREMENTS. COORDINATE WITH HVAC CONTRACTOR.
- LOCATE WATER HEATER WHERE SHOWN. CONNECT WATER PIPING AND EXPANSION TANK TO WATER HEATER SYSTEM PER MANUFACTURER'S INSTALLATION INSTRUCTIONS. CONNECT NATURAL GAS TO WATER HEATER PER MANUFACTURER'S INSTALLATION INSTRUCTIONS AND LOCAL CODE. EXTEND FLUE/VENT PIPING AND COMBUSTION AIR PIPING TO ROOF AND LOCATE PER MANUFACTURER'S INSTALLATION INSTRUCTIONS.
- EXTEND 2" NATURAL GAS DOWN TO SERVE COOKLINE AS INDICATED. PROVIDE SOLENOID VALVE AS PART OF THE KITCHEN HOOD SYSTEM FOR NATURAL GAS SUPPLY TO ALL EQUIPMENT. VALVE SHALL CLOSE IN THE EVENT THAT THE HOOD ANSUL SYSTEM IS DISCHARGED. COORDINATE WITH KITCHEN EXHAUST HOOD SYSTEM MANUFACTURER.
- EXTEND 3/4"CW TO EXISTING COLD WATER SERVING THIS SPACE. FIELD VERIFY EXACT LOCATION.
- DISCHARGE WASTE FROM THE THREE-COMPARTMENT SINK TO FLOOR SINK INDICATED. PROVIDE A 1" (MIN) AIR GAP AT DISCHARGE TO FLOOR SINK. DISCHARGE DRAIN LINE THROUGH AN INDIRECT PIPE AS SPECIFIED IN SECTIONS 802.1.1 THROUGH 802.1.8 OF THE INTERNATIONAL PLUMBING CODE.
- EXISTING PLUMBING FIXTURES IN ROOM INDICATED TO REMAIN.



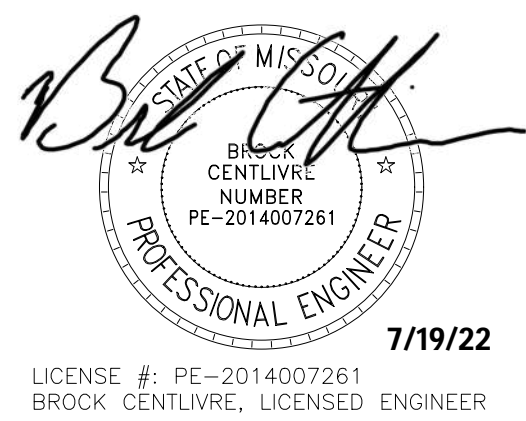
15225 Broadmoor Street
Overland Park, KS 66223
hjd Architecture, LLC
State Certificate of Authority Number:
A-1234

Name - Gregory D. Highbarger

License -Missouri - 007530

MEP CONSULTANT

SBY5 Engineers, LLC
1100 Main Street, Floor 4
Kansas City, MO 64105
(913) 689-9449



7/19/22
LICENSE # PE-2014007261
BROCK CENTURIUS, LICENSED ENGINEER

A Tenant Finish for:

The Pizzeria

805 NE Lakewood Boulevard

Lee's Summit, MO 64064

Date 1/14/2022
Job Number 22-001
Drawn By
Checked By

Revisions		
Number	Date	Description
Δ	07/19/2022	MISC. REV.

5BY5
ENGINEERS

1100 Main Street, 4th Floor
Kansas City, MO 64105
Missouri COA: 2017040776
913-689-9449
contact@5by5eng.com
5by5eng.com

P1.0

© 2022 hjd Architecture, LLC. ALL RIGHTS RESERVED. DEVELOPMENT SERVICES
LEE'S SUMMIT, MISSOURI

08/02/2022

PLUMBING FIXTURE SCHEDULE:

INFORMATION BELOW IS FOR GENERAL FIXTURE REQUIREMENTS ONLY. PLUMBING CONTRACTOR SHALL COORDINATE WITH OWNER AND ARCHITECT FOR EXACT FIXTURE REQUIRED FOR THE PROJECT. COORDINATE WITH OWNER FOR INFORMATION ON PROCURING FIXTURES AND ASSOCIATED COSTS. CONTRACTOR SHALL BE CLEAR AS TO WHAT FIXTURES ARE INCLUDED IN THEIR PROPOSED COSTS.

FIXTURES IN THIS SCHEDULE, OR THE APPROVED EQUIVALENT, SHALL BE PROVIDED BY THE PLUMBING CONTRACTOR UNLESS NOTED OTHERWISE. REFER TO SPECIFICATIONS AND MANUFACTURER'S INSTALLATION INSTRUCTIONS FOR FURTHER REQUIREMENTS.

- FT1**
- EXPANSION TANK: 150 PSIG MAXIMUM WORKING PRESSURE, 4.5-GALLON CAPACITY, 0.45 MAXIMUM ACCEPTANCE FACTOR, AND 3/4" PIPE CONNECTION. SET THE AIR CHARGE PRESSURE TO MATCH EXISTING WATER SYSTEM PRESSURE.
 - TYPE: EXPANSION TANK SHALL BE ASME APPROVED, DIAPHRAGM TYPE EXPANSION.

- FC01**
- FLOOR CLEANOUT: CAST IRON BODY, FLASHING FLANGE WITH CLAMPING COLLAR, ABS PLUG, AND ADJUSTABLE, ROUND, SECURED, HEAVY DUTY SCORED NICKEL BRONZE TOP. INSTALL PER MANUFACTURER'S REQUIREMENTS BASED ON FLOORING TYPE USED. PROVIDE ACCESSORIES AS REQUIRED FOR PROPER INSTALLATION. COORDINATE FINISH TYPE WITH ARCHITECTURAL PLANS.

- FS1**
- FLOOR SINK: 6" DEEP (MIN) CAST IRON BODY WITH ACID RESISTING ENAMELED INTERIOR, ANCHOR FLANGE WITH SEEPAGE HOLES, CLAMP COLLAR, ALUMINUM SEDIMENT BUCKET AND NICKEL BRONZE RIM AND HALF GRATE. USE PUSH ON JOINT OF OUTLET SIZE AS SHOWN ON PLANS. PROVIDE ADAPTER FOR CONNECTION TO DRAIN PIPING MATERIAL USED.

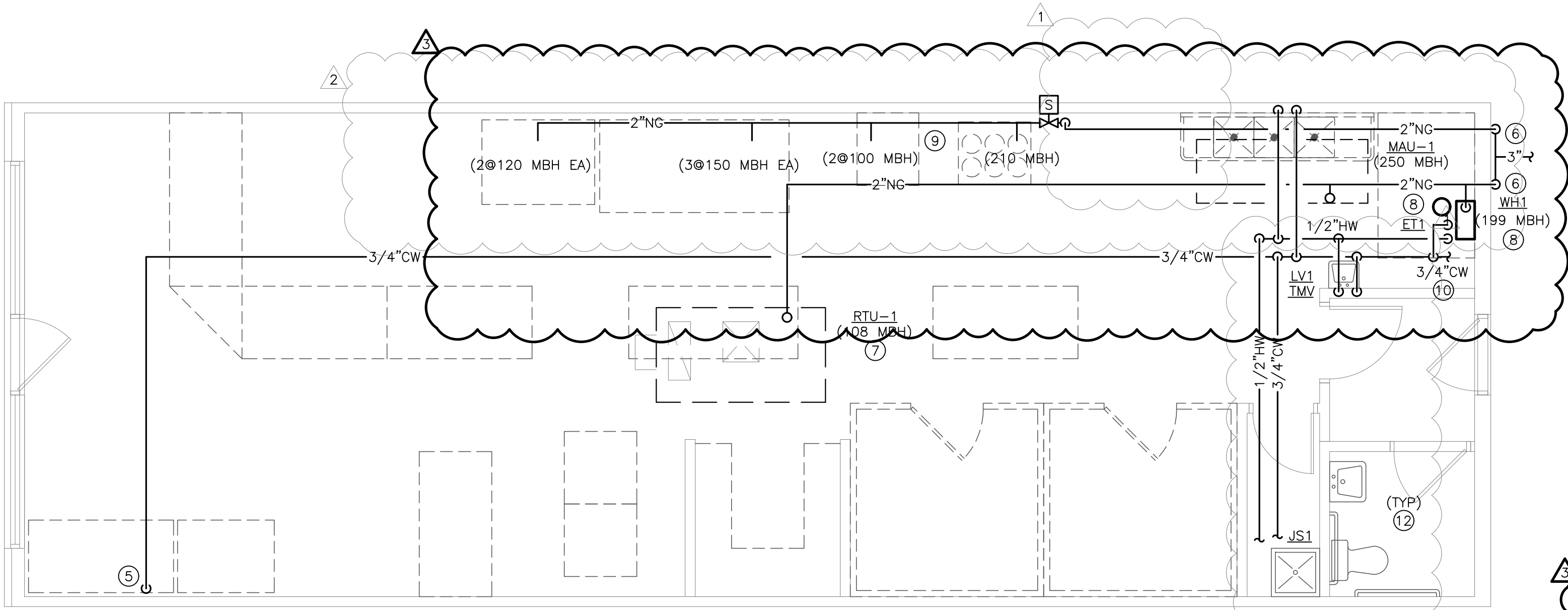
- GI1**
- GREASE INTERCEPTOR: SCHIER MODEL GB3 BELOW GRADE SEAMLESS POLYETHYLENE TANK TYPE GREASE INTERCEPTOR WITH COVER. INTERCEPTOR SHALL BE CERTIFIED TO ASME A112.14.3 AND CSA B481.1. PROVIDE WITH BUILT-IN TEST CAPS. WATER/GAS-TIGHT SEAL ON COVER. PROVIDE PUMPOUT PORT KIT AND ASSOCIATED FLOW RISER. FLOW RATE OF 50 GPM AND 270 LBS OF GREASE CAPACITY. 4" INLET AND OUTLET. PROVIDE FLOW RESTRICTORS (MAX 50 GPM) ON ALL DISCHARGE DRAINS SERVING THIS INTERCEPTOR.

- JS1**
- JANITOR'S SINK: 24"W x 24"L x 10"H MOLDED FIBER BASIN WITH INTEGRAL STAINLESS STEEL DRAIN BODY.
 - FAUCET: FAUCET WITH WALL BRACE, INTEGRAL VACUUM BREAKER, PAIL HOOK, AND 3/4" MALE HOSE THREADED OUTLET. SECURE FAUCET IN WALL WITH BACKBOARD.
 - TRIM: TYPE 304 20-GAUGE STAINLESS STEEL WALL SURROUNDS, 3"-0" LONG REINFORCED HOSE WITH 3/4" CHROME COUPLING AND WALL HOOK, EXTRUDED VINYL BUMPER GUARD, AND 2"-0" STAINLESS STEEL MOP HANGER.

- LV1**
- WALL-MOUNTED LAVATORY (ADA ACCESSIBLE): RECTANGULAR WALL MOUNTED WHITE VITREOUS CHINA FIXTURE WITH FAUCET LEDGE AND FRONT OVERFLOW.
 - FAUCET: FAUCET WITH 4" CENTERSET, VANDAL-RESISTANT, WITH LEVER HANDLES AND 0.5 GPM AERATOR.
 - TRIM: GRID DRAIN WITH TAILPIECE, QUARTER-TURN BALL TYPE ANGLE STOP VALVES WITH RISERS AND ESCUTCHEONS, 1-1/4" 17-GAUGE TUBULAR CHROME PLATED BRASS ADJUSTABLE P-TRAP AND WASTE ARM WITH CLEANOUT PLUG AND ESCUTCHEON, CONCEALED ARM CARRIER WITH STANCHIONS TO FLOOR, AND INSULATION KIT FOR WATER AND WASTE PIPES.

- TMV1**
- THERMOSTATIC MIXING VALVE: SOLID BRASS BODY, THERMOSTATIC WAX ELEMENT, CORROSION RESISTANT INTERNAL PARTS, AND INTEGRAL CHECKS, ASSE 1070 COMPLIANT, CAPABLE OF 2.2 GPM WITH A 20 PSI DIFFERENTIAL AND A MINIMUM FLOW RATE OF 0.5 GPM. MAXIMUM TEMPERATURE STOP SET FOR 110 DEGREES. MOUNT BELOW THE PLUMBING FIXTURE WHERE INDICATED ON PLANS.

- WH1**
- WATER HEATER: NATURAL GAS, CONTINUOUS TYPE, 199 MBH INPUT, 90°F TEMPERATURE RISE AND 140°F OPERATING TEMPERATURE. PROVIDE ALL WATER CONNECTIONS, VALVES, AND SPECIALS PER MANUFACTURER'S INSTALLATION REQUIREMENTS.
 - ELECTRICAL REQUIREMENTS: 120 VOLT, SINGLE PHASE POWER.



1 PLUMBING WATER AND GAS PLAN

SCALE: 1/4" = 1'-0"



PLUMBING PLAN NOTES:

- EXTEND 3" SANITARY TO EXISTING SANITARY MAIN SERVING THIS SPACE. FIELD VERIFY EXACT LOCATION AND FLOW DIRECTION.
- EXTEND NEW 3" VENT SYSTEM TO EXISTING VENT SYSTEM SERVING RESTROOM. FIELD VERIFY EXISTING LOCATION. MAINTAIN A MINIMUM OF 10'-0" FROM ANY AIR INTAKE OR BUILDING OPENING.
- COORDINATE EXACT LOCATION OF ALL FLOOR SINKS AND FLOOR DRAINS WITH FINAL OWNER EQUIPMENT LAYOUT. COORDINATE EXACT ROUGH-IN LOCATION OF ALL UTILITIES WITH FINAL OWNER EQUIPMENT LAYOUT AND CAPACITIES. CONNECT UTILITIES TO ALL KITCHEN EQUIPMENT PER KITCHEN EQUIPMENT MANUFACTURER REQUIREMENTS, FIXTURE CONNECTION SCHEDULE AND LOCAL CODES. ROUTE ALL KITCHEN EQUIPMENT INDIRECT DRAINS TO NEAREST FLOOR SINK.
- LOCATE GREASE INTERCEPTOR ON STAND WHERE SHOWN. COORDINATE HEIGHT OF STAND AS REQUIRED TO MEET FLOW LINE OF GREASE WASTE PIPING CONNECTING TO EXISTING SYSTEM. PROVIDE FLOW CONTROL DEVICE ON GREASE INTERCEPTOR INLET WHERE SHOWN. ALL KITCHEN DRAINAGE SHALL ENTER THE FLOW CONTROL DEVICE BEFORE ENTERING THE GREASE INTERCEPTOR. INSTALL PER MANUFACTURER'S INSTALLATION INSTRUCTIONS. INSTALL GREASE TRAP AND VENT PER MANUFACTURER'S INSTALLATION INSTRUCTIONS.
- EXTEND COLD WATER DOWN TO BEVERAGE SYSTEM. CONNECT TO BEVERAGE SYSTEM THROUGH A BEVERAGE RATED DOUBLE-CHECK VALVE BACKFLOW PREVENTER AS REQUIRED BY LOCAL CODE. COORDINATE WITH FIXTURE CONNECTION SCHEDULE FOR ADDITIONAL REQUIREMENTS.
- PROVIDE NEW 3" NATURAL GAS SERVICE WHERE SHOWN. SPLIT NATURAL GAS TO 2 LINES AS INDICATED (EACH LINE SHALL BE 2" MIN SIZE). REFER TO NATURAL GAS LOAD SCHEDULE FOR DISTANCE, CAPACITY AND SIZING DETAILS.
- EXTEND NATURAL GAS TO ROOFTOP UNIT ON ROOF. PROVIDE DIRT LEO AND GAS COOK AT ROOFTOP UNIT CONNECTION. REFER TO ROOFTOP UNIT INSTALLATION INSTRUCTIONS FOR ADDITIONAL REQUIREMENTS. COORDINATE WITH HVAC CONTRACTOR.
- LOCATE WATER HEATER WHERE SHOWN. CONNECT WATER PIPING AND EXPANSION TANK TO WATER HEATER SYSTEM PER MANUFACTURER'S INSTALLATION INSTRUCTIONS. CONNECT NATURAL GAS TO WATER HEATER PER MANUFACTURER'S INSTALLATION INSTRUCTIONS AND LOCAL CODE. EXTEND FLUE/VENT PIPING AND COMBUSTION AIR PIPING TO ROOF AND LOCATE PER MANUFACTURER'S INSTALLATION INSTRUCTIONS.
- EXTEND 2" NATURAL GAS DOWN TO SERVE COOKLINE AS INDICATED. PROVIDE SOLENOID VALVE AS PART OF THE KITCHEN HOOD SYSTEM FOR NATURAL GAS SUPPLY TO ALL EQUIPMENT. VALVE SHALL CLOSE IN THE EVENT THAT THE HOOD ANSUL SYSTEM IS DISCHARGED. COORDINATE WITH KITCHEN EXHAUST HOOD SYSTEM MANUFACTURER.
- EXTEND 3/4"CW TO EXISTING COLD WATER SERVING THIS SPACE. FIELD VERIFY EXACT LOCATION.
- DISCHARGE WASTE FROM THE THREE-COMPARTMENT SINK TO FLOOR SINK INDICATED. PROVIDE A 1" (MIN) AIR GAP AT DISCHARGE TO FLOOR SINK. DISCHARGE DRAIN LINE THROUGH AN INDIRECT PIPE AS SPECIFIED IN SECTIONS 802.1.1 THROUGH 802.1.8 OF THE INTERNATIONAL PLUMBING CODE.
- EXISTING PLUMBING FIXTURES IN ROOM INDICATED TO REMAIN.

NATURAL GAS LOAD SCHEDULE				
EQUIPMENT TAG	QTY	DESCRIPTION	CFH INPUT (EACH)	TOTAL CFH
RTU-1	1	ROOFTOP UNIT	130	130
MAU-1	1	MAKEUP AIR UNIT	250	250
K-1	1	6 BURNER RANGE/OVEN	210	210
K-2	3	CONVEYOR OVEN	150	450
K-3	2	PIZZA OVEN	120	240
K-4	2	FRYERS (EST)	100	200
WH1	1	WATER HEATER	199	199
SYSTEM TOTAL =			1,679	

NOTES:
A. METER DISCHARGE PRESSURE: 11 IN WG.
B. TOTAL DEVELOPED LENGTH: 100 FT.
C. DESIGN NATURAL GAS PIPING SYSTEM PRESSURE DROP: 0.5 IN WG.
D. INLET PRESSURE FOR ALL GAS-FIRED EQUIPMENT: 7 TO 11 IN WG.

2

2

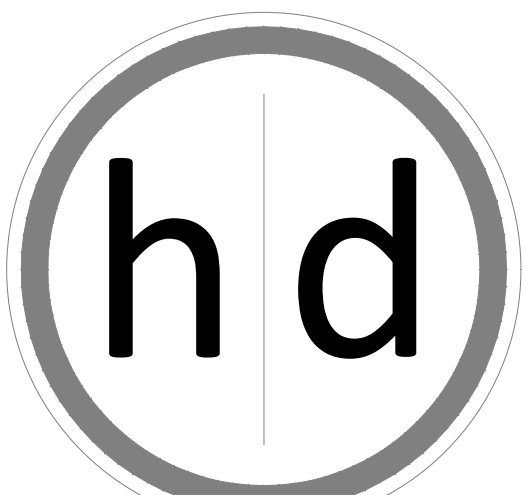
FIXTURE CONNECTION SCHEDULE					
FIXTURE	WASTE	VENT	COLD	HOT	NOTES
CARBONATORS					DCVB
DISHWASHERS, GLASSWASHER, WAREWASHER					SEE MANUFACTURER'S INSTALLATION INSTRUCTIONS
FLOOR DRAIN		2"			---
ICE MAKERS / SODA DISPENSERS					DCVB
JANITOR'S SINK	2"	1-1/2"	1/2"	1/2"	VB
LAVATORY - PUBLIC	2"	1-1/2"	1/2"	1/2"	TMV
SINK - HANDWASH	2"	1-1/2"	1/2"	1/2"	TMV

NOTES:
DCV: DOUBLE CHECK VALVE ASSEMBLY, LINE SIZED, CONFORMING TO ASSE 1015.
DCVB: DOUBLE CHECK VALVE ASSEMBLY, LINE SIZED, CONFORMING TO ASSE 1022.
RP: REDUCED PRESSURE PRINCIPLE BACKFLOW PREVENTION ASSEMBLY, LINE SIZED, CONFORMING TO ASSE 1013.
TMV: POINT OF USE TYPE THERMOSTATIC MIXING VALVE CONFORMING TO ASSE 1070.
VB: ATMOSPHERIC TYPE VACUUM BREAKER CONFORMING TO ASSE 1020.

INSTALL BACKFLOW PREVENTION DEVICES ON EQUIPMENT AND FIXTURES PER LOCAL WATER COMPANY REQUIREMENTS. ALL BACKFLOW PREVENTERS SHALL BE IN AN ACCESSIBLE LOCATION FOR PERIODIC INSPECTION AND TESTING.

5BY5
ENGINEERS

1100 Main Street, 4th Floor
Kansas City, MO 64105
Missouri COA: 2017040776
913-689-9449
contact@5by5eng.com
5by5eng.com



15225 Broadmoor Street
Overland Park, KS 66223

h|d Architecture, LLC

State Certificate of Authority Number:
A-1234

Name - Gregory D. Highbarger
License -Missouri - 007530

MEP CONSULTANT

5BY5 Engineers, LLC
1100 Main Street, Floor 4
Kansas City, MO 64105
(913) 689-9449



LICENSE # PE-2014007261
BROOK CENTURIUM, LICENSED ENGINEER

A Tenant Finish for:

The Pizzeria

805 NE Lakewood Boulevard
Lee's Summit, MO 64064

Date 1/14/2022
Job Number 22-001
Drawn By
Checked By

Revisions	Number	Date	Description
	1	07/19/2022	MISC. REV.

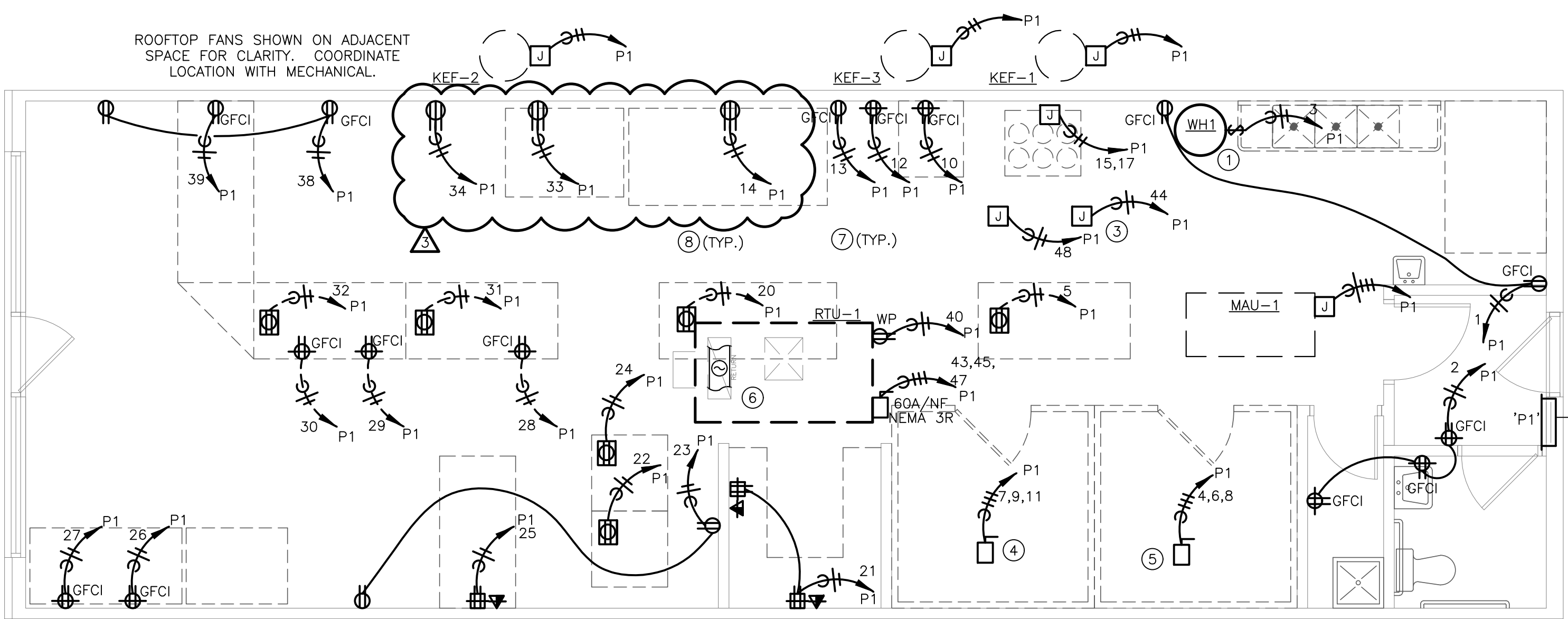
P2.0

© 2022 h|d Architecture, LLC. ALL RIGHTS RESERVED.

DEVELOPMENT SERVICES

LET'S SUMMIT. RESOUM

08/02/2022



1 POWER PLAN

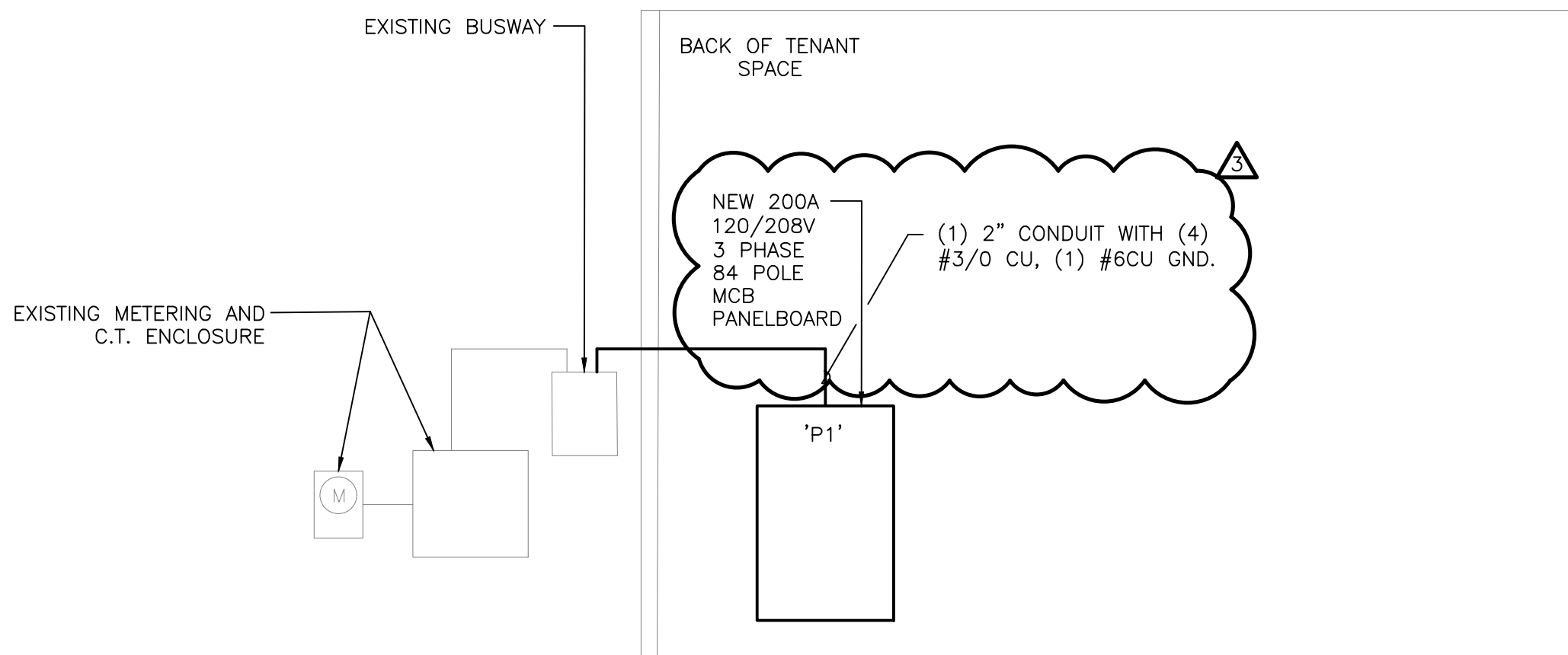
SCALE: 1/4" = 1'-0"



PANELBOARD P1														
BUS AMPS: MAIN SIZE / TYPE: VOLTS/PHASE: MOUNTING:			200A MCB 208Y/120V, 3PH, 4W SURFACE			LOCATION: NEHA RATING: AFC VALUE: AIC RATING:			ELECTRICAL ROOM NEMA 1 FIELD VERIFY 10,000			GROUND BUS: YES FEED THRU LUGS: NO SECTIONS: 1 OF 1		
NOTES	CKT #	CIRCUIT DESCRIPTION	BREAKER AMPS	WIRE SIZE	LOAD (VA)	CONNECTED PER PHASE (VA)			LOAD (VA)	WIRE SIZE	BREAKER P AMPS	CIRCUIT DESCRIPTION	CKT #	NOTES
	1	GEN. RECEPT.	20	1 #12	360		720		360	#12	1 20	RECEPT - RESTROOM	2	
	3	WATER HEATER WH1	20	1 #12	200			2,001	1,801				4	
GFCI	5	SALAD PREP TABLE	20	1 #12	1,200			3,001	1,801	#12	3 20	WALK-IN FREEZER	6	
	7				1,801		3,602		1,801				8	
	9	WALK-IN COOLER	20	3 #12	1,801			2,641	840	#12	1 20	DOUGH SHEETER	10	
GFCI	11				1,801			1,981	180	#12	1 20	PIZZA PREP RECEPT.	12	
	13	PIZZA PREP TABLE	20	1 #12	1,800		2,550		750	#12	1 20	CONVEYER OVEN	14	
	15	EX. HOOD LTG & CNTRLs	20	2 12	432			432	0		1 20	SPARE	16	
	17				432				432	0	1 20	SPARE	18	
	19	SPARE	20	1	0		1,200		1,200	#12	1 20	HOT BOXES TABLE	20	GFCI
	21	OFFICE RECEPTACLES	20	1 #12	1,080			2,280	1,200	#12	1 20	HOT BOXES TABLE	22	GFCI
	23	GEN. RECEPT.	20	1 #12	360			1,560	1,200	#12	1 20	HOT BOXES TABLE	24	GFCI
	25	POS SYSTEM	20	1 #12	900		3,420		2,520	#10	1 30	DISPLAY FRIG.	26	GFCI
GFCI	27	DRINKS - DISPLAY FRIG.	30	1 #10	2,520			2,700	180	#12	1 20	SANDWICH MAKER TABLE RECEPT.	28	
	29	SLICER	20	1 #12	840			1,020	180	#12	1 20	GEN. RECEPT.	30	
	31	SANDWICH MAKING TABLE	20	1 #12	1,200		3,000		1,800	#12	1 20	BY THE SLICE COOLER	32	GFCI
	33	DECK OVEN	20	1	750			1,500	750	#4	2 80	DECK OVEN	34	
	35	SPARE	20	1	0			0	0		1 20	SPARE	36	
	37	SPARE	20	1	0		360		360	#12	1 20	GEN. RECEPT.	38	
	39	GELATO DISPLAY FREEZER	20	1 #12	1,200			1,380	180	#12	1 20	RTU RECEPT. (ON ROOF)	40	
	41	SPARE	20	1	0			900	900	#12	1 20	LTG	42	
SECTION 2														
	43				3,750		4,250		500	#12	1 20	OVEN CONTROLS	44	
	45	RTU-17.5 TON	50	3 #8	3,750		3,750		0			SHUNT TRIP SECTION	46	
	47				3,750			4,250	500	#12	1 20	STOVE CONTROLS	48	
	49	SPARE	20	1	0		0		0			SHUNT TRIP SECTION	50	
	51	SPARE	20	1	0		0		0		1 20	SPARE	52	
	53	SPARE	20	1	0		0		0		1 20	SPARE	54	
	55	SPACE			0	0			0		1 20	SPARE	56	
	57	SPACE			0	0		0	0			SPACE	58	
	59	SPACE			0	0		0	0			SPACE	60	
	61	SPACE			0	0		0	0			SPACE	62	
	63	SPACE			0	0		0	0			SPACE	64	
	65	SPACE			0	0		0	0			SPACE	66	
	67	SPACE			0	0		0	0			SPACE	68	
	69	SPACE			0	0		0	0			SPACE	70	
	71	SPACE			0	0		0	0			SPACE	72	
	73	SPACE			0	0		0	0			SPACE	74	
	75	SPACE			0	0		0	0			SPACE	76	
	77	SPACE			0	0		0	0			SPACE	78	
	79	SPACE			0	0		0	0			SPACE	80	
	81	SPACE			0	0		0	0			SPACE	82	
	83	SPACE			0	0		0	0			SPACE	84	
PER PHASE SUB-TOTALS						19,102	16,684	13,144	LEGEND:					
TOTAL CONNECTED PANELBOARD (VA)						48,930			TS - V-A TIME SWITCH					
TOTAL CONNECTED PANELBOARD (AMPS)						136			GF - GROUND FAULT INTERRUPTER					
TOTAL PANELBOARD DEMAND (VA)						49,155			FA - FIRE ALARM / RED / LOCKING TAB					
TOTAL PANELBOARD DEMAND (AMPS)						136			EM - EMERGENCY LTG. / LOCKING TAB					
						GFCI - GROUND FAULT CURRENT INTERRUPTER RATED CIRCUIT BREAKER								
						ST - SHUNT TRIP								
						LCK - LOCKING TAB								
						IG - ISOLATED GROUND								
						OL - RE. ONE-LINE DIAGRAM								

ELECTRICAL RISER NOTES:

1. RISER IS FOR REFERENCE ONLY OF EXISTING CONDITIONS.



1 ELECTRICAL RISER DIAGRAM

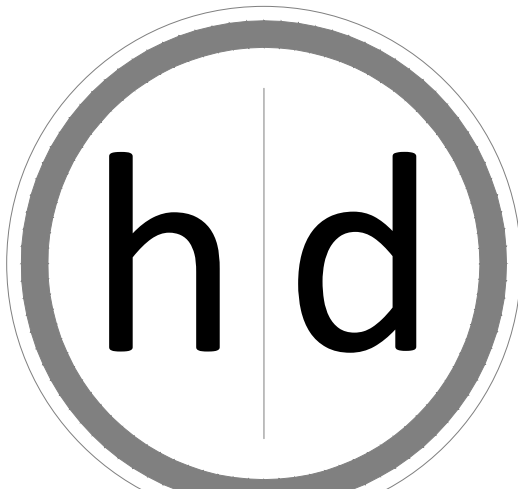
SCALE: N/A

ELECTRICAL GENERAL NOTES:

- REFER TO SHEET E3.0 FOR ELECTRICAL GENERAL DEMOLITION NOTES AND ELECTRICAL GENERAL NOTES.

ELECTRICAL PLAN NOTES:

1. PROVIDE POWER CONNECTION TO WATER HEATER CONTROLS. COORDINATE WITH PLUMBING CONTRACTOR FOR EXACT REQUIREMENTS AND EXACT LOCATION.
2. ROUTE HOMERUN VIA HOOD CONTROLS.
3. PROVIDE JUNCTION BOX FOR CONNECTION TO EXHAUST HOOD LIGHTING AND CONTROLS. COORDINATE WITH KITCHEN EQUIPMENT SUPPLIER AND MECHANICAL CONTRACTOR.
4. PROVIDE POWER CONNECTION TO WALK-IN COOLER. CONFIRM EXACT POWER REQUIREMENTS AND LOCATION WITH FINAL EQUIPMENT SELECTION.
5. PROVIDE POWER CONNECTION TO WALK-IN FREEZER. CONFIRM EXACT POWER REQUIREMENTS AND LOCATION WITH FINAL EQUIPMENT SELECTION.
6. NEW DUCT SMOKE DETECTOR FURNISHED WITH UNIT AND MOUNTED IN RETURN PLENUM. E.C. INSTALL TEST/RESET BUTTON IN ACCESSIBLE LOCATION
7. CONFIRM RECEPTACLE REQUIREMENTS FOR ALL KITCHEN EQUIPMENT PRIOR TO INSTALL. REFERENCE MANUFACTURER SPECIFICATIONS FOR ADDITIONAL INFORMATION.
8. PROVIDE GFCI TYPE RECEPTACLE FOR ALL KITCHEN RECEPTACLES. FOR LARGE EQUIPMENT PROVIDE GFCI TYPE CIRCUIT BREAKER AT PANEL FOR EASE OF ACCESS.
9. REMOVE EXISTING PANELBOARD AND ALL ASSOCIATED CONDUIT AND CIRCUITRY BACK TO SOURCE OR TO NEARS DEVICE TO REMAIN.
10. PROVIDE NEW 400A 120/208V 3 PHASE 4 WIRE 84 POLE MCB PANELBOARD TO SERVE SPACE. PROVIDE NEW FEEDER CONNECTION FROM EXISTING BUSWAY ON BACK OF BUILDING TO NEW PANELBOARD. CONFIRM NEW PANELBOARD MAY BE INSTALLED IN GENERAL LOCATION SHOWN. NOTIFY ENGINEER OF DISCREPANCIES.



15225 Broadmoor Street
Overland Park, KS 66223

h|d Architecture, LLC

State Certificate of Authority Number:
A-1234

Name - Gregory D. Highbarger

License -Missouri - 007530

MEP CONSULTANT

SBY5 Engineers, LLC

1100 Main Street, Floor 4
Kansas City, MO 64105
(913) 689-9449



7/19/22
LICENSE # PE-2014007261
BROCK CENTURINE, LICENSED ENGINEER

A Tenant Finish for:

The Pizzeria

805 NE Lakewood Boulevard
Lee's Summit, MO 64064

Date 1/14/2022
Job Number 22-001
Drawn By
Checked By

Revisions	Number	Date	Description
	1	07/19/2022	MISC. REV.

5BY5
ENGINEERS

1100 Main Street, 4th Floor
Kansas City, MO 64105
Missouri COA: 2017040776
913-689-9449
contact@5by5eng.com
5by5eng.com

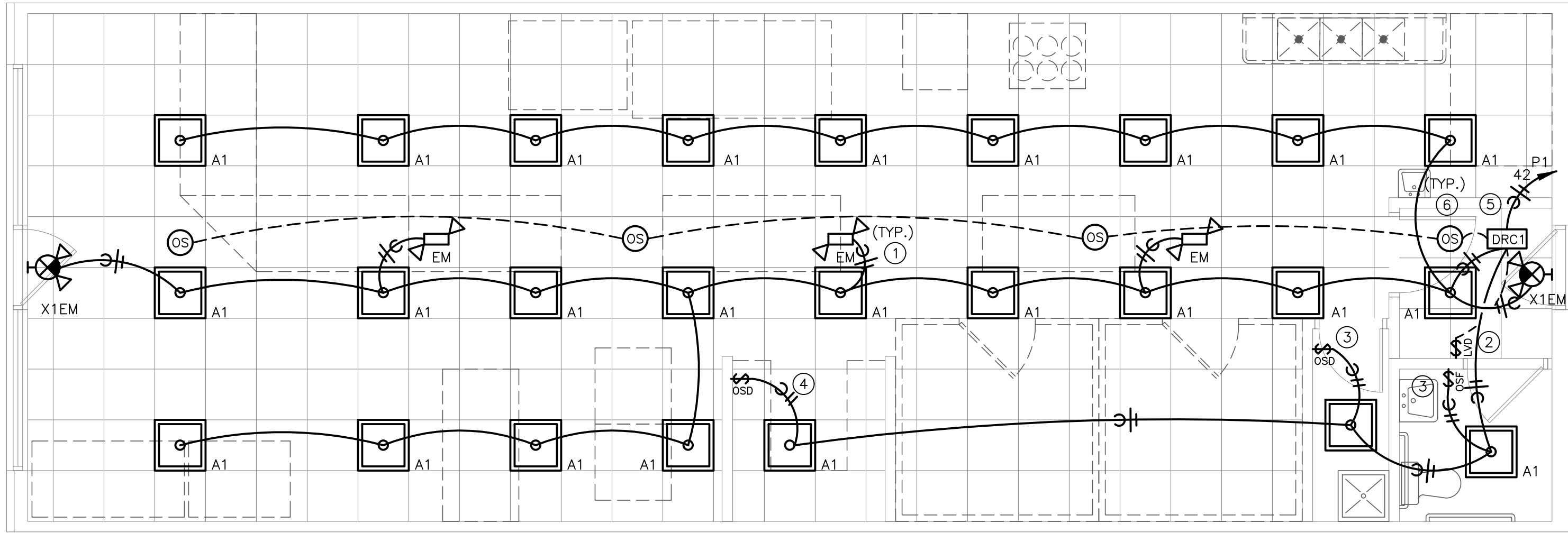
E1.0

© 2022 h|d Architecture, LLC. ALL RIGHTS RESERVED.

DEVELOPMENT SERVICES

LEE'S SUMMIT, MISSOURI

08/02/2022



1 LIGHTING PLAN
SCALE: 1/4\"/>



ELECTRICAL GENERAL NOTES:

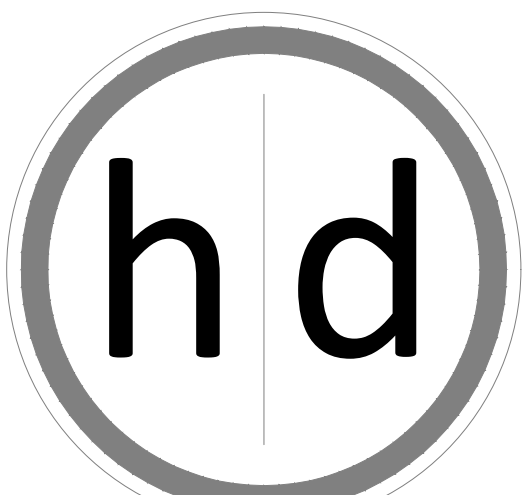
- REFER TO E3.0 FOR ELECTRICAL GENERAL NOTES.

ELECTRICAL LIGHTING PLAN NOTES:

- ROUTE UNSWITCHED HOT TO ALL EMERGENCY LIGHT FIXTURES AND EXIT SIGNS.
- PROVIDE DIMMABLE LOW VOLTAGE SWITCH FOR LIGHTING CIRCUITS AS SHOWN. REFERENCE SHEET E4 FOR LIGHTING CONTROL DEVICE SCHEDULE FOR FURTHER INFORMATION.
- PROVIDE NEW OCCUPANCY SENSING WALL MOUNTED LIGHT SWITCH. SWITCH SHALL CONTROL EXHAUST FAN AND LIGHT IN SPACE. REFERENCE LIGHTING CONTROL DEVICE SCHEDULE ON SHEET E3.0 AND MECHANICAL PLANS FOR ADDITIONAL INFORMATION.
- PROVIDE NEW DIMMABLE OCCUPANCY SENSING WALL MOUNTED LIGHT SWITCH. REFERENCE LIGHTING CONTROL DEVICE SCHEDULE ON SHEET E3.0 FOR ADDITIONAL INFORMATION.
- PROVIDE NEW ROOM CONTROLLER. CONNECT TO CEILING MOUNT SENSORS AND LOW VOLTAGE SWITCHES IN ROOM PER MANUFACTURERS RECOMMENDATIONS AND AS SHOWN ON THE DRAWINGS. REFERENCE LIGHTING CONTROL DEVICE SCHEDULE ON SHEET E3.0 FOR ADDITIONAL INFORMATION.
- PROVIDE NEW CEILING MOUNTED OCCUPANCY SENSOR. CONNECT TO ROOM CONTROLLERS AND LOW VOLTAGE SWITCHES PER MANUFACTURERS RECOMMENDATIONS AND AS SHOWN ON DRAWINGS. REFERENCE LIGHTING CONTROL DEVICE SCHEDULE ON SHEET E3.0 FOR ADDITIONAL INFORMATION.

LIGHT FIXTURE SCHEDULE												
TYPE	MANUFACTURER AND MODEL #	EQUAL MANUFACTURER AND MODEL #	LIGHT SOURCE	WATTS	MINIMUM LUMENS	VOLTAGE	CRI	COLOR TEMP	DIMMABLE	FINISH	DESCRIPTION	NOTES
A1	HE WILLIAMS 506-S-2-2-L43-9-40-F-AF12125-DIM-UNV	LITHONIA	INTEGRAL LED	34	4360	UNV	80	4000	0-10V / 10%	WHITE	2'X2' LED STATIC TROFFER.	1-5
EM	HE WILLIAMS - EMER/LED-WHT-SDT-D	LITHONIA - ELM6L-9-UVOLT-LTP-SDRT-	INTEGRAL LED	6	1100	UNV	80	-	0-10V / 10%	WHITE	EMERGENCY CEILING MOUNTED FIXTURE. FIXTURE SHALL BE PROVIDED WITH INTEGRAL EMERGENCY 90 MINUTE BATTERY PACK.	1-5
X1EM	SURELITE APCH7R	LITHONIA - LHQM LED	INTEGRAL LED	10.3	-	UNV	NA	NA	NA	ARCHITECT TO CONFIRM	COMBINATION EMERGENCY EGRESS / SINGLE FACE LED EXIT LIGHT FIXTURE WITH BATTERY PACK, RED LETTERS AND FIELD CONFIGURED ARROWS.	1-5
NOTES: 1. COORDINATE ALL LIGHT FIXTURE SELECTIONS AND/OR SUBSTITUTIONS WITH ARCHITECT, OWNER AND/OR ENGINEER PRIOR TO ORDER. 2. PROVIDE LIGHTING CONTROLS THAT ARE COMPATIBLE WITH FIXTURES PROVIDED. 3. COORDINATE WITH ARCHITECT, OWNER AND/OR ENGINEER FOR DIMMING REQUIREMENTS PRIOR TO INSTALLATION. 4. PROVIDE ALL COMPONENTS AND ACCESSORIES AS REQUIRED FOR A COMPLETE AND OPERABLE INSTALLATION. 5. EQUIVALENTS MUST BE SUBMITTED AND APPROVED PRIOR TO BID.												

LIGHTING CONTROL DEVICE SCHEDULE								
TAG	MANUFACTURER AND MODEL SERIES	SENSOR DESCRIPTION	COVERAGE AREA (WXD OR RADIUS Ø)	VOLTAGE	MODE SETTINGS	TIME DELAY	DEVICE FINISH COLOR	SENSOR NOTES
WALL SWITCH OCCUPANCY SENSORS								
OS	WATTSTOPPER PW-301	SINGLE-RELAY PASSIVE INFRARED OCCUPANCY SENSOR WALL SWITCH WITH MANUAL OVERRIDE BUTTON.	MAJOR 30' x 35' MINOR 15' x 20'	120/277V	MANUAL ON AUTO OFF	5 MIN	WHITE	1
OSD	WATTSTOPPER PW-311	SINGLE-RELAY PASSIVE INFRARED DIMMABLE OCCUPANCY SENSOR WALL SWITCH WITH MANUAL OVERRIDE BUTTON.	MAJOR 30' x 35' MINOR 15' x 20'	120/277V	AUTO ON AT 50% AUTO OFF	5 MIN	WHITE	1
CEILING MOUNTED DAYLIGHT / OCCUPANCY SENSORS								
OS	WATTSTOPPER LMDC-100	CEILING MOUNT ULTRASONIC DIGITAL OCCUPANCY SENSOR. 360 DEGREE COVERAGE. PLUG-AND-PLAY CONFIGURATION, (2) RJ45 PORTS, LCD DISPLAY, IR RECEIVER, CONFIGURATION BUTTONS.	ULT MAJOR 25' X 25' PIR 32' Ø	24V	-	20 MIN	WHITE	2
POWER SUPPLIES/ROOM CONTROLLERS								
DRC1	WATTSTOPPER LMRC-211	DIGITAL SINGLE-RELAY ON/OFF/DIMMING ROOM CONTROLLER. 0-10V DIMMING. MAXIMUM 20A TOTAL LOAD RATING. PLUG-AND-PLAY CONFIGURATION, (4) RJ45 PORTS, LED STATUS INDICATORS, CONFIGURATION BUTTONS, PLENUM RATED.	-	120/277V LOAD, 24VDC CONTROL OUTPUT	AUTO ON AT 50%, AUTO OFF	-	-	
LOW VOLTAGE SWITCHES								
LVDH	WATTSTOPPER LMDM-101	DIGITAL DIMMING WALL SWITCH.	-	24VDC	-	-	WHITE	2,3,4
GENERAL NOTES: A. SENSOR LAYOUT BASED ON WATTSTOPPER COVERAGE PATTERNS. ADJUST QUANTITIES AND LOCATIONS FOR ALTERNATE MANUFACTURERS LISTED BELOW PER MANUFACTURER. B. LIGHT, SENSOR SWITCH, COOPER-GREENGATE, CRESTRON, HUBBELL BUILDING AUTOMATION, AND LEVITON ARE CONSIDERED EQUIVALENT MANUFACTURES FOR SUBMISSION AS AN APPROVED MANUFACTURER, CONTINGENT ON LISTINGS APPROPRIATE FOR THE APPLICATION. C. DURING SHOP DRAWINGS, PROVIDE LIGHTING PLANS SHOWING LOCATION, MOUNTING HEIGHT, ORIENTATION AND COVERAGE AREAS FOR EACH OCCUPANCY SENSOR FOR REVIEW AND APPROVAL BY ENGINEER. ALSO INCLUDE ON PLANS OTHER CEILING MOUNTED SYSTEMS, SHOWING COORDINATION WITH CEILING DEVICES INCLUDING BUT NOT LIMITED TO HVAC. D. PROVIDE ALL SENSORS BY THE SAME MANUFACTURER. E. PROVIDE COPIES OF SENSOR AND POWER SUPPLY OPERATION INSTRUCTIONS TO OWNER. F. PROVIDE WALL SWITCH AND CEILING SENSORS WITH AN ADJUSTABLE TIME DELAY RANGE OF 0-30 MIN, UNO. G. DO NOT INSTALL LINE VOLTAGE SENSORS ON GFCI PROTECTED CIRCUITS. H. FIELD-SET DEVICES TO THE ON MODE INDICATED IN TABLE, DISABLE ANY VISIBLE/AUDIBLE ALERT SETTINGS, AND SET SENSITIVITIES TO MAXIMUM LEVELS. I. PROVIDE ALL LOW VOLTAGE WIRING BETWEEN SENSORS, DEVICES, AND POWER SUPPLIES AS REQUIRED AND PER MANUFACTURER RECOMMENDATIONS. J. WHERE OCCUPANCY SENSORS USE BOTH PIR AND ULTRASONIC TECHNOLOGIES, PROGRAM OFF MODES (MAINTAIN OCCUPANCY AND RE-TRIGGER) TO TRIGGER ON A SIGNAL FROM K. K. WHERE MULTIPLE LOW VOLTAGE SWITCHES ARE CONNECTED WITHIN THE SAME SPACE, PROGRAM THE SWITCHES TO CONTROL THE LIGHTING IN THE EXACT SAME MANNER, UNO. SENSOR NOTES: 1. CONNECT NEUTRAL CONDUCTOR TO SENSOR. 2. PROVIDE CUSTOM BUTTON ENGRAVING PER ENGINEER'S DIRECTION. 3. PROVIDE POWER SUPPLY WITH UNSWITCHED HOT CONDUCTOR CONNECTION. COORDINATE DEVICE LOCATIONS IN FIELD. 4. NUMBER DENOTES HOW MANY SWITCHES NEEDED FOR CONTROL. (1) DIMMING SWITCH PER FIXTURE TYPE IN AREA.								



15225 Broadmoor Street
Overland Park, KS 66223

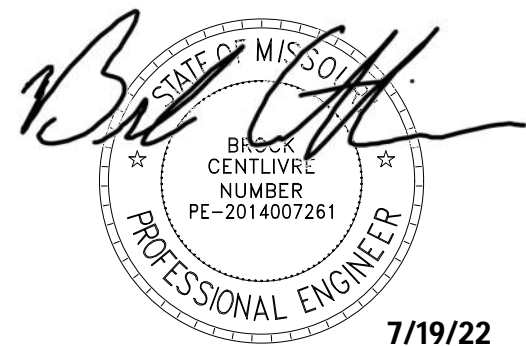
h|d Architecture, LLC

State Certificate of Authority Number:
A-1234

Name - Gregory D. Highbarger
License -Missouri - 007530

MEP CONSULTANT

5BY5 Engineers, LLC
1100 Main Street, Floor 4
Kansas City, MO 64105
(913) 689-9449



LICENSE # PE-2014007261
BROOK CENTURIUM, LICENSED ENGINEER

A Tenant Finish for:

The Pizzeria

805 NE Lakewood Boulevard
Lee's Summit, MO 64064

Date 1/14/2022
Job Number 22-001
Drawn By
Checked By

Revisions	Number	Date	Description
Δ	07/19/2022	MISC. REV.	

5BY5
ENGINEERS

1100 Main Street, 4th Floor
Kansas City, MO 64105
Missouri COA: 2017040776
913-689-9449
contact@5by5eng.com
5by5eng.com

E2.0

© 2022 h|d Architecture, LLC. ALL RIGHTS RESERVED. NOT FOR REPRODUCTION.

DEVELOPMENT SERVICES
LET'S SUMMIT. RESOUMI
08/02/2022

LINETYPES LEGEND:

- NEW
- EXISTING OR BY OTHERS
- DEMOLITION

LIGHTING LEGEND:

- • CEILING MOUNTED LIGHT FIXTURE, 2'x2' OR 2'x4'
- • CEILING MOUNTED LIGHT FIXTURE, 2'x2' OR 2'x4' (NIGHT LIGHT OR EMERGENCY CIRCUIT)
- STRIP LIGHT FIXTURE. REFER TO FIXTURE SCHEDULE FOR LENGTH.
- WALL-MOUNT SCONCE OR WALL BRACKET LIGHT FIXTURE.
- RECESSED WALL WASH CAN LIGHT FIXTURE.
- RECESSED, SURFACE, OR STEM HUNG LIGHT FIXTURE.
- SINGLE FACE EXIT LIGHT FIXTURE, WALL OR CEILING MOUNT, WITH FIELD CONFIGURABLE ARROWS. PROVIDE DIRECTIONAL ARROWS AS INDICATED ON DRAWINGS. SHADED AREA INDICATES EXIT LIGHT FACE.
- DOUBLE FACE EXIT LIGHT FIXTURE, WALL OR CEILING MOUNT, WITH FIELD CONFIGURABLE ARROWS. PROVIDE DIRECTIONAL ARROWS AS INDICATED ON DRAWINGS. SHADED AREA INDICATES EXIT LIGHT FACE.
- COMBINATION SINGLE FACE EXIT/EMERGENCY LIGHT FIXTURE, WALL OR CEILING MOUNT, WITH FIELD CONFIGURABLE ARROWS. PROVIDE DIRECTIONAL ARROWS AS INDICATED ON DRAWINGS. SHADED AREA INDICATES EXIT LIGHT FACE.
- NOTE: REFER TO LIGHT FIXTURE SCHEDULE AND ARCHITECTURAL DRAWINGS FOR ADDITIONAL INFORMATION AND MOUNTING HEIGHTS.

POWER LEGEND:

- INDICATES ABOVE COUNTER (TYP)
- DUPLEX RECEPTACLE MOUNTED AT +18" AFF TO CENTER OF RECEPTACLE (UNO). ABOVE COUNTER RECEPTACLES SHALL BE +48" AFF (UNO).
- DUPLEX ISOLATED GROUND RECEPTACLE MOUNTED AT +18" AFF TO CENTER OF RECEPTACLE (UNO). ABOVE COUNTER RECEPTACLES SHALL BE +48" AFF (UNO).
- DUPLEX RECEPTACLE ON STAND-BY GENERATOR POWER, MOUNTED AT +18" AFF TO CENTER OF RECEPTACLE (UNO). RECEPTACLES SHOWN ABOVE COUNTER SHALL BE +48" AFF (UNO).
- FLOOR-MOUNTED DUPLEX OR FOURPLEX RECEPTACLE MOUNTED IN PVC FLOORBOX, OR POKE-THRU.
- SPECIAL RECEPTACLE, NUMBER REFERS TO "NEMA" CONFIGURATION. MOUNT AT +18" AFF TO CENTER OF RECEPTACLE (UNO).
- FOURPLEX RECEPTACLE MOUNTED AT +18" AFF TO CENTER OF RECEPTACLE (UNO). RECEPTACLES SHOWN TO BE ABOVE COUNTER SHALL BE +48" AFF (UNO).
- FLUSH MOUNT COMBINATION POWER AND VOICE/DATA FLOORBOX.
- SINGLE POLE WALL MOUNT TOGGLE SWITCH. MOUNT AT +48" AFF TO CENTER OF SWITCH.
- WALL MOUNTED OCCUPANCY SENSOR SWITCH. MOUNT AT +48" AFF TO CENTER OF SWITCH.
- WALL MOUNTED OCCUPANCY SENSOR SWITCH WITH 0-10V DIMMING CONTROL. MOUNT AT +48" AFF TO CENTER OF SWITCH.
- WALL MOUNTED LOW VOLTAGE SWITCH WITH 0-10V DIMMING CONTROL. MOUNT AT +48" AFF TO CENTER OF SWITCH.
- CEILING MOUNTED OCCUPANCY SENSOR.
- ROOM CONTROLLER/POWER PACK FOR LIGHT FIXTURE CONTROL. DEVICE SHALL BE CONCEALED IN CEILING.
- VOICE OPENING. PROVIDE RING WITH STRING TO ABOVE CEILING. DEVICES SHOWN TO BE COUNTER SHALL BE +48" AFF (UNO).
- DATA OPENING. PROVIDE RING WITH STRING TO ABOVE CEILING. DEVICES SHOWN TO BE COUNTER SHALL BE +48" AFF (UNO).
- COMBINATION VOICE/DATA OPENING. PROVIDE RING WITH STRING TO ABOVE CEILING. DEVICES SHOWN TO BE COUNTER SHALL BE +48" AFF (UNO).
- FLUSH FLOOR MOUNT VOICE/DATA OUTLET MOUNTED IN PVC FLOORBOX.
- DISCONNECT SWITCH, STARTER, & COMBINATION STARTER/DISCONNECT SWITCH. SIZE AS INDICATED ON DRAWINGS.
- ELECTRICAL PANEL BOARD, FLUSH OR SURFACE MOUNT.
- JUNCTION BOX.
- NOTE: LINE THROUGH DEVICE INDICATES TO BE MOUNTED ABOVE COUNTERTOP OR CABINET. REFER TO ARCHITECTURAL ELEVATIONS FOR MOUNTING HEIGHTS IF NOT INDICATED ON POWER PLAN.
- REFER TO LIGHTING CONTROL DEVICE SCHEDULE AND ARCHITECTURAL DRAWINGS FOR FURTHER INFORMATION.

WIRING LEGEND:

- HOMERUN TO PANELBOARD WITH NUMBER AND SIZE OF CONDUCTORS INDICATED ON PLANS.
- GROUNDED CONDUCTOR.
- CONDUIT OR CIRCUIT BREAK/CONTINUATION.
- CONDUIT WITH ENDCAP FOR FUTURE USE.
- GROUNDING SOURCE.

FIRE ALARM LEGEND:

- RETURN DUCT/PLENUM MOUNT SMOKE DETECTOR

ABBREVIATIONS LEGEND:

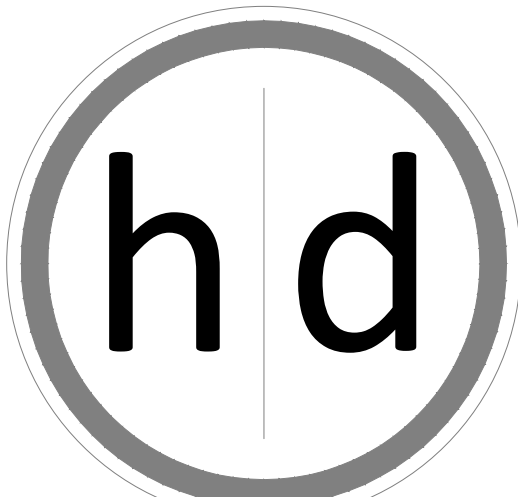
- AFF ABOVE FINISHED FLOOR
- ED EXISTING TO BE DEMOLISHED
- EM EMERGENCY
- ER EXISTING TO BE RELOCATED
- ETR EXISTING TO REMAIN
- GROUND GROUND FAULT CURRENT INTERRUPTER
- NL NIGHT LIGHT
- TR TAMPER RESISTANT
- UNO UNLESS NOTED OTHERWISE
- WP WEATHER PROTECTED COVER / GFCI

ELECTRICAL GENERAL DEMOLITION NOTES:

- REFERENCE ARCHITECTURAL DRAWINGS FOR FULL EXTENT OF DEMOLITION WORK AND PHASING. NOTIFY ARCHITECT, ENGINEER, AND/OR OWNER, AS APPLICABLE, OF ANY CONFLICTS OR DISCREPANCIES BETWEEN DRAWINGS AND JOBSITE CONDITIONS PRIOR TO SUBMITTING BID.
- COORDINATE DEMOLITION AND REMOVAL OF EXISTING EQUIPMENT AND LIGHTING SYSTEMS WITH ARCHITECTURAL PHASING DRAWINGS AND OWNER TO ALLOW NECESSARY SYSTEMS TO REMAIN OPERATIONAL DURING CONSTRUCTION.
- UNLESS NOTED OTHERWISE, DISPOSE OF ALL ELECTRICAL EQUIPMENT, LIGHT FIXTURES, AND DEVICES SHOWN TO BE REMOVED. COORDINATE WITH THE OWNER THE ITEMS TO BE SALVAGED, AND THE LOCATION FOR STORAGE. AVOID DAMAGING SALVAGED ITEMS DURING DEMOLITION WORK AND DURING TRANSPORT TO OWNER'S DESIGNATED STORAGE LOCATION.
- WHERE ALTERATION OF ELECTRICAL EQUIPMENT, LIGHT FIXTURES, RACEWAYS, OR WIRING DEVICES AFFECTS EXISTING SURFACES/FINISHES: REPAIR/PAINT AFFECTED SURFACE TO MATCH EXISTING ADJACENT SURFACE IN ACCORDANCE WITH OWNER REQUIREMENTS. MAINTAIN FIRE RATING OF ALL FLOORS, WALLS, AND CEILINGS THAT ARE RATED.
- WHERE DEMOLITION WORK INTERRUPTS ELECTRICAL CONTINUITY OF CIRCUITS THAT ARE TO REMAIN IN USE: PROVIDE NECESSARY DEVICES AND RELATED CIRCUITRY TO MAINTAIN ELECTRICAL CONTINUITY IN ACCORDANCE WITH OWNER REQUIREMENTS. RE-CIRCUIT REUSED ELECTRICAL EQUIPMENT, LIGHT FIXTURES, AND WIRING DEVICES PREVIOUSLY POWERED FROM DEMOLISHED EQUIPMENT TO NEW OR TEMPORARY EQUIPMENT AS NEEDED.
- COORDINATE DISCONNECTION OF POWER TO EQUIPMENT BEING DEMOLISHED / REMOVED / RELOCATED WITH OTHER TRADES PRIOR TO START OF WORK. REMOVE ALL ELECTRICAL EQUIPMENT, LIGHT FIXTURES, RACEWAYS, WIRING DEVICES, AND RELATED CIRCUITRY NOT BEING REUSED IN ALL ACCESSIBLE AREAS INCLUDING FLOORS, WALLS, AND CEILINGS THAT ARE TO BE REMOVED.
- ELECTRICAL EQUIPMENT, RACEWAYS, AND RELATED CIRCUITRY ABANDONED IN PLACE SHALL BE PERMANENTLY DISCONNECTED FROM ALL POWER SOURCES, INSULATED FROM CONTACT WITH OTHER LIVE ELECTRICAL WIRING/DEVICES, AND IDENTIFIED AT TERMINATIONS AS NO LONGER BEING IN SERVICE. CABLES/WIRING NOT BEING REUSED SHALL BE REMOVED UNLESS IDENTIFIED FOR FUTURE USE. CARE SHOULD BE TAKEN DURING THE REMOVAL PROCESS TO PROTECT THE EXISTING REUSED CABLES/WIRING FROM DAMAGE.

ELECTRICAL GENERAL NOTES:

- DRAWINGS ARE SCHEMATIC IN NATURE AND BASED ON PRELIMINARY SITE OBSERVATION AND ORIGINAL DESIGN DRAWINGS (WHEN AVAILABLE). PRIOR TO BID, CONTRACTOR SHALL INVESTIGATE THE PROJECT SITE AND BECOME FULLY AWARE OF ALL FIELD CONDITIONS, CURRENT SYSTEM OPERATION AS WELL AS COORDINATION REQUIREMENTS. COORDINATE ALL MECHANICAL WORK WITH ARCHITECTURAL DRAWINGS, EXISTING CONDITIONS AND OTHER TRADES PRIOR TO BID OR START OF WORK.
- ELECTRICAL WORK SHALL CONFORM TO APPLICABLE CODES AS ADOPTED BY THE LOCAL AUTHORITY HAVING JURISDICTION. REFER TO ARCHITECTURAL CODE PLANS FOR SPECIFIC CODE REFERENCES.
- COORDINATE ELECTRICAL WORK WITH ALL OTHER PROJECT TRADES (E.G. ARCHITECTURAL, STRUCTURAL, ELECTRICAL, PLUMBING, FIRE SPRINKLER, ETC.).
- COORDINATE EXACT LOCATIONS OF ALL LIGHT FIXTURES AND ELECTRICAL DEVICES WITH ARCHITECTURAL DRAWING AND OTHER TRADES PRIOR TO ROUGH-IN. COORDINATE ALL WORK WITH OTHER TRADES AND EXISTING CONDITIONS AS REQUIRE TO PROPERLY INSTALL ALL SYSTEMS.
- INSTALL PULL STRING IN ALL EMPTY CONDUIT/RACEWAY. TERMINATE CONDUIT STUB-UP WITH A NYLON BUSHING.
- COLOR FOR RECEPTACLES, SWITCHES, NETWORK DEVICES AND COVER PLATES SHALL MATCH COLOR SHALL MATCH AND BE SELECTED AS BRIGHT WHITE UNLESS NOTED OTHERWISE. CONFIRM EXACT COLOR WITH ARCHITECT PRIOR TO ORDER.
- ELECTRICAL CONTRACTOR SHALL INSPECT ALL ELECTRICAL EQUIPMENT TO REMAIN. REPORT ANY DEFICIENCIES TO OWNER PRIOR TO START OF WORK.
- ALL CONDUCTORS SHALL BE INSTALLED IN ELECTRICAL METALLIC TUBING (EMT) AS REQUIRED BY THE LATEST EDITION OF THE NATIONAL ELECTRIC CODE (NEC). ALL INSTALLATIONS SHALL BE PER NEC REQUIREMENTS.
- AT CONTRACTOR'S OPTION, MC CABLE CAN BE USED FOR CIRCUITING CONNECTIONS TO RECEPTACLES AND LIGHTING. "HOME RUNS" SHALL BE ROUTED IN CONDUIT. ALL INSTALLATIONS SHALL BE PER NEC REQUIREMENTS.
- CONTRACTOR SHALL VERIFY ALL ROUGH-IN LOCATIONS AND QUANTITIES FOR GENERAL USE POWER AND DATA WITH OWNER AND/OR ARCHITECT PRIOR TO INSTALLATION.
- CIRCUITS FOR GENERAL USE POWER SHALL HAVE A MAXIMUM OF 6 RECEPTACLES ON A CIRCUIT (A SINGLE 4-PLEX RECEPTACLE COUNTS FOR 2 OF THE ALLOWED 6 RECEPTACLES).
- ALL WIRE SIZES LISTED ON PLANS ASSUME COPPER CONDUCTORS ARE USED (UNLESS NOTED OTHERWISE).
- CONTRACTOR SHALL LABEL ALL RECEPTACLES, BOXES, PANELBOARDS, ETC. WITH PANEL, CIRCUIT NUMBER, ETC. PER INDUSTRY STANDARDS. COORDINATE WITH OWNER FOR FINAL PANEL AND EQUIPMENT DESIGNATIONS.
- ALL DEVICES (WHERE APPLICABLE) SHALL BE VERTICALLY IN LINE.



15225 Broadmoor Street
Overland Park, KS 66223
h|d Architecture, LLC
State Certificate of Authority Number:
A-1234

Name - Gregory D. Highbarger
License -Missouri - 007530

MEP CONSULTANT

SBY5 Engineers, LLC
1100 Main Street, Floor 4
Kansas City, MO 64105
(913) 689-9449



LICENSE # PE-2014007261
BROCK CENTILHRE, LICENSED ENGINEER

A Tenant Finish for:

The Pizzeria

805 NE Lakewood Boulevard
Lee's Summit, MO 64064

Date 1/14/2022
Job Number 22-001
Drawn By
Checked By

Revisions	Number	Date	Description
Δ	07/19/2022	MISC. REV.	

5BY5
ENGINEERS

1100 Main Street, 4th Floor
Kansas City, MO 64105
Missouri COA: 2017040776
913-689-9449
contact@5by5eng.com
5by5eng.com

E3.0

© 2022 h|d Architecture, LLC. ALL RIGHTS RESERVED.

DEVELOPMENT SERVICES
LEE'S SUMMIT, MISSOURI

08/02/2022